

ENLACE ONLINE

The official newsletter of the American Association of Teachers of Spanish & Portuguese

Vol. XXIII, No. 3

Spring, 2011

Editor: Mary-Anne Vetterling



Source: http://commons.wikimedia.org/wiki/File:Dc_fireworks_martin_building.jpg

IN THIS ISSUE:

- ▶ Editor's Message
- ▶ NSE News
- ▶ Useful Links & Chapter Websites
- ▶ AATSP Officers Contact Information
- ▶ News from *Hispania*
- ▶ Problems in our Profession?
- ▶ *Hispania* News
- ▶ Important Dates

AATSP 93rd ANNUAL CONFERENCE

July 6-9, 2011

**Grand Hyatt Washington
1000 H Street Northwest
Washington, DC**

**PRE-REGISTRATION ENDS FRIDAY, JUNE 10,
2011**

After that date you need to register on-site.

CLICK HERE FOR REGISTRATION DETAILS:

<http://www.aatsp.org/?page=2011ConferencFinal>

or go to [Http://www.aatsp.org](http://www.aatsp.org)

◆ **EDITOR'S MESSAGE:**

Dear Colleagues:

With school over, or nearly so, I know that all of you are looking forward to the summer, whether it will be restful or active. I certainly hope to see many of you in Washington this July at our annual conference if not also at the AP reading in Cincinnati. I look forward to exchanging stories, ideas, and, in general becoming inspired and renewed from these summer events. Students are always evolving, challenging and sometimes annoying us in new ways and it is important to hear the success stories of how our colleagues deal with circumstances that often surprise us in unusual ways!

But students aren't the only thing changing. Our country is evolving and the number of Hispanics is growing significantly. In this newsletter you will find an article about that and I hope that it will inspire many comments from you that I can include in a future *Enlace*. What, too, are the challenges facing those of you teaching Portuguese? How can we help one another do our jobs better in these perplexing times?

Our challenges also include the weather! This past year has brought some really unusual weather all over the world. Snow days disrupt teaching as do days when students just can't make it to class, whether the problem is a weather-related illness, broken-down public transportation, or roads destroyed by debris.

So I do hope you enjoy your summer and that some really good weather arrives at your location and stays long enough for you to enjoy it. Be sure to take advantage of the opportunities available to you as a language teacher and have a great summer!

Best wishes,

Mary-Anne Vetterling

Editor of *Enlace*

Professor of Spanish, Regis College, Weston, MA

◆ NEWS ABOUT MEMBERS

Professor **Domnita Dumitrescu** was recently elected to the position of *Miembro Correspondiente de la Academia Norteamericana de la Lengua Española*. Congratulations on this very prestigious honor!

Her latest book, *Aspects of Spanish Pragmatics*, has been published by Peter Lang, 2011, American University Studies. Series 13: Linguistics. Vol. 35.

For more information, go to:

http://www.peterlang.com/index.cfm?event=cmp.ccc.seitenstruktur.detailseiten&seitenty_p=produkt&pk=53866&concordeid=310443

◆ NSE (NATIONAL SPANISH EXAM) NEWS

Top Student Winners of the NSE from the Mass Bay Chapter



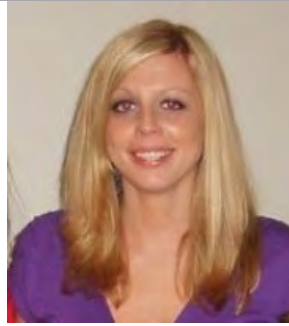
Winners of the Teacher Study Abroad Scholarship in Spain & Costa Rica, 2011

Be sure to click on these teachers' blog sites for their exciting and informative stories!



Sinde Wickersham

John Carroll Catholic HS – Birmingham, AL
24 years experience
17 years giving the NSE
[Sinde Wickersham's Blog](http://wickershamcostarica.blogspot.com)
<http://wickershamcostarica.blogspot.com>



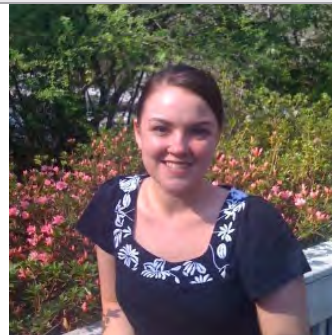
Elizabeth Brennan

St. Henry District HS – Erlanger, KY
4 years experience
3 years giving the NSE
[Elizabeth Brennan's Blog](http://aventurasenes.blogspot.com)
<http://aventurasenes.blogspot.com>



Cathy Chambers

Marist High School –
Chicago, IL
10 years experience
4 years giving the NSE
[Cathy Chambers' Blog](http://cathy-myblogabroad.blogspot.com)
<http://cathy-myblogabroad.blogspot.com>



Amber Player

Woodward Academy Upper School -
College Park, GA
8 years experience
3 years giving the NSE
[Amber Player's Blog](http://ateacherabroad.edublogs.org)
<http://ateacherabroad.edublogs.org>

◆ **HISPANIA:**



CALL FOR PAPERS

The American Association of Teachers of Spanish and Portuguese and the editors of *Hispania* invite authors to submit literary, linguistic, and pedagogical manuscripts for peer review that relate to Spanish and Portuguese on the topics found in the two Special Focus Issue descriptions below.

Hispania 2013

The Scholarship of Community Engagement

Submission deadline: January 1, 2011

The Scholarship of Community Engagement comprises experiential learning linked to the community, service learning, volunteerism related to language learning, languages for special purposes, and related topics.

Distinguished colleagues and pioneers in the field of "The Scholarship of Community Engagement" Ethel Jorge (Pitzer College) and Josef Hellebrandt (Santa Clara University) will curate this issue with the editor.

Hispania 2015

The Scholarship of Film and Film Studies

Submission deadline: January 1, 2014

The Scholarship of Film and Film Studies encompasses the teaching of film in the classroom, film as text for language learners of all levels, theory and film, literary works in film, linguistic aspects of film, and related concepts.

All manuscripts must be submitted through the online ScholarOne system at <http://mc.manuscriptcentral.com/hispan>. Please indicate the Special Focus Issue in your cover letter. For more information, contact Editor Sheri Spaine Long at spainelong@aatsp.org. We appreciate your efforts to circulate this call to any interested colleagues.

◆ PROBLEMS IN OUR PROFESSION?

Here is a link to an article (Time Magazine, May 12, 2011) about problems with educating the growing Hispanic population in the United States:

<http://www.time.com/time/nation/article/0,8599,2070930,00.html>

This may be of interest to you and I hope it sparks some good discussions among all of us.

What do you think about this problem and others? Please send your thoughts to Mary-Anne Vetterling at MAV@regiscollege.edu for possible inclusion in an article on this topic in a future *Enlace*.

◆ AATSP BOOTH AT ACTFL, NOVEMBER 2010 (BOSTON)



◆ NEWS FROM JNCL

For the latest news go to: <http://www.languagepolicy.org/>

◆ **FOR YOUR CALENDAR:**

- AATSP, July 6-9, 2011, Grand Hyatt Washington at Metro Center, Washington, DC <http://www.aatsp.org>
 - AP Annual Conference, July 20–24, 2011. The San Francisco Marriott Marquis and Moscone Center <http://www.collegeboard.com/apac>
 - TFLA October 13-15, 2011, Houston TX, <http://www.tfla.info/Conferences>
 - ACTFL, November 18-20, 2011, Denver, CO. <http://www.actfl.org>
 - MLA, January 5-8, 2012, Seattle, WA. <http://www.mla.org>
 - Central States: March 8-10, 2012, Milwaukee, WI. <http://www.csctfl.org>
 - SCOLT Conference March 22-24, 2012, Atlanta, GA. <http://www.scolt.org>
 - CLTA, March 15-18, 2012, Los Angeles, CA. <http://www.clta.net/>
 - Southeast Coastal Conference on Languages and Literatures, March 29-30, 2012, Statesboro, GA. <http://ceps.georgiasouthern.edu/conted/seccll.html>
 - Northeast Conference April 20-23, 2012, Baltimore, MD <http://www2.dickinson.edu/prorg/nectfl>
 - SWCOLT, April 12-14, 2012, in Phoenix, AZ. <http://www.swcolt.org>
- For more information about events of interest, please consult the calendar link on the AATSP Homepage: <http://www.aatsp.org>

◆ **LINKS TO IMPORTANT AFFILIATED SERVICES OF THE AATSP:**

NSE <http://www.nationalspanishexam.org/>
SHH <http://www.sociedadhonorariahispanica.org>
SHA <http://www.sociedadhonorariahispanica.org/sociedad-honoraria-de-amistad/>
HISPANIA <http://www.hispaniajournal.org/>

◆ **OTHER LINKS OF INTEREST:**

Best Spanish Websites: <http://www.uni.edu/becker/Spanish3.html>
CARLA: <http://www.carla.umn.edu/>
Cemanahuac: <http://www.cemanahuac.com/>
Embajada de España: <http://www.mec.es/sgci/usa/es/home/index.shtml>
JNCL/NCLIS: <http://www.languagepolicy.org/>
Longwood University Summer Institute for Spanish Teachers in Valencia, Spain: <http://www.longwood.edu/staff/goetzla/Spain/Institute.htm>
Middlebury Language Schools: <http://www.middlebury.edu/academics/ls>
NCLRC: <http://www.nclrc.org/newsletter.html>
NETC Aventura Cultural summer Spanish teacher immersion programs: <http://www.educationaltravel.com/aventura>
NELL: <http://nell.org/>
Portuguese American Leadership Council: <http://www.palcus.org/mc/page.do>
Quia Games in Spanish: <http://www.quia.com/shared/spanish/>
Sigma Delta Pi: <http://www.sigmadeltapi.org/>

◆ **JOBS:**

If you are looking for a new job, be sure to check out the AATSP website and click on the Career Center Button to search through the list. Go to <Http://www.aatsp.org>
Also go to <http://www.LatPro.com> .

◆ **CHAPTER NEWS:**

Here are some homepages of AATSP Chapters that you might wish to access as you look for good ideas for your own chapters and to help you network with other AATSP members.

◆ **Alabama Chapter:**

<http://www.aatsp-al.org/>

◆ **Arizona Chapter:**

<http://w3.coh.arizona.edu/pal/aatsp/>

◆ **California Chapter (Southern California):**

<http://sites.google.com/site/aatpsocal>

◆ **Florida Chapter:**

http://www.faatsp.us/page.php?page_id=16

◆ **Georgia Chapter:**

<http://www.aatsp-ga.org/>

<http://aatsp-ga.org/index.html>

◆ **Illinois, Chicago Area Chapter:**

<http://www.chicagoaatsp.org/>

◆ **Indiana Chapter:**

<http://www.iaatsp.org/>

◆ **Iowa Chapter:**

<http://sites.google.com/site/aatspia/>

◆ **Kentucky Chapter:**

<http://www.nku.edu/~landwehr/nse/nseky.html>

◆ **Massachusetts: Mass Bay Chapter:**

<http://aatsp-massbay.tripod.com/>

◆ **Michigan Chapter:**

<http://www.aatsp-michigan.org/>

◆ **Minnesota Chapter:**

<http://mn-aatsp.net/default.aspx>

◆ **New Jersey Chapter:**

<http://www.njaatsp.org/>

◆ **New York: Long Island Chapter:**

<http://aatsplongisland.edublogs.org/>

◆ **New York: Metropolitan New York Chapter:**

<http://www.aatspmetny.org>

◆ **North Carolina Chapter:**

<http://www.aatsp-nc.org/portal/>

◆ **North Dakota Chapter:**

<http://bis.midco.net/jmcrow/ndaatsp/index.htm>

◆ **Texas (Lone Star):**

http://web2.greenhill.org/facultyfolders/CB/US/MC_Languages/Tapia/AATSP/index.htm

◆ **Virginia Chapter:**

<http://www.aatspva.org>

◆ **Washington State Chapter:**

<http://www.juandefucaaatsp.org/Board-A.html>

◆ **Wisconsin Chapter:**

<http://www.aatsp-wi.org>

◆ AATSP 2011 Officers

President: Liliana Soto Fernández, President in 2011 (2012)
John Jay College of Criminal Justice, CUNY, New York City, NY. lsoto-fernandez@jjay.cuny.edu or DRSOTOFDEZ@AOL.COM

Vice President/President-Elect: Christine M. Campbell, President in 2012 (2013)
Defense Language Institute; Monterey, CA. christine.m.campbell@us.army.mil

Immediate Past President: Laura Sánchez (2011)
Mayfield Senior School, Pasadena, CA. laura.sanchez@mayfieldsenior.org

Executive Director: Emily Spinelli
AATSP, 900 Ladd Road Walled Lake, MI 48390. espinelli@aatsp.org

Editor of *Hispania*: Sheri Spaine Long (2012)
University of Alabama at Birmingham, Birmingham, AL. espanol@uab.edu

Managing Editor of *Hispania*: David Wiseman
Lewis-Clark State College, Lewiston, ID, dwiseman@aatsp.org or dpwiseman@lsc.edu

Executive Council:

Robert Anderson (2011)
Winston-Salem State University, Winston-Salem, NC. andersonrn@wssu.edu

Terry L. Ballman (2013)
California State University, Channel Islands; Camarillo, CA. terry.ballman@csuci.edu

Kevin Cessna-Buscemi (2012)
National Spanish Examinations. kcessna@nationalspanishexam.org

Stephanie Cuddeback-Salim (2012)
Matignon High School, Cambridge, MA. scuddebacksalim@matignon-hs.org

Domnita Dumitrescu (2011)
California State University-Los Angeles. ddumitr@exchange.calstatela.edu

Cheryl Fuentes-Wagner (2013)
Bush High School; Richmond, TX. Cheryl.FuentesWagner@fortbend.k12.tx.us

Sally Merryman (2012)
Smith Middle School, Chapel Hill, NC. smerryman@chccs.k12.nc.us

José Ortega (2011)
St. Mary's Hall, San Antonio, TX jortega@smhall.org

Loknath Persaud (2013)
Pasadena City College; Pasadena, CA. lpersaud@pasadena.edu

Ursula Sihocky (2012)
Sociedad Honoraria Hispánica, Buffalo Grove, IL. sociedad@comcast.net

Phyllis E. VanBuren (2012)
St. Cloud State University, St. Cloud, MN. pevanburen@stcloudstate.edu

Enlace Online is published four times a year by the American Association of Teachers of Spanish and Portuguese, Inc. in the fall, winter and spring, along with a special summer edition commemorating the annual meeting of the AATSP. All editorial submissions should be addressed to

**Mary-Anne Vetterling, Editor, Enlace,
Box 1071, Regis College, 235 Wellesley St,
Weston, MA 02493.
Voice: 781-768-7458;
FAX: 781-863-1739,
email: MAV@Regiscollege.edu**

Please note the following stipulations regarding submitting materials:

1. Submissions may be written in Spanish, Portuguese or English.
2. Submissions should be made electronically in Word for Windows and submitted either via email or snail mail (CD).
3. Photographs or art work may be in color or black and white.
4. All submissions are subject to editorial review. Deadlines:
Fall: November 1; *Winter*: January 1; *Spring*: April 1, *Summer*: August 1.

Please note the following publication dates for *Enlace*.

November 15	(Fall Issue)
February 1	(Winter Issue)
May 1	(Spring Issue)
August 15	(Summer Issue)