

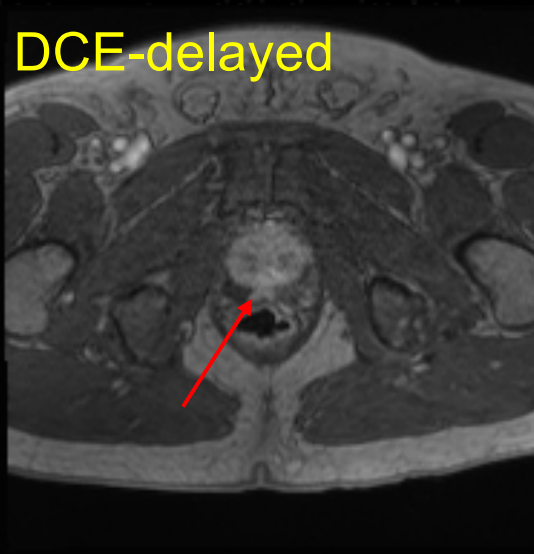
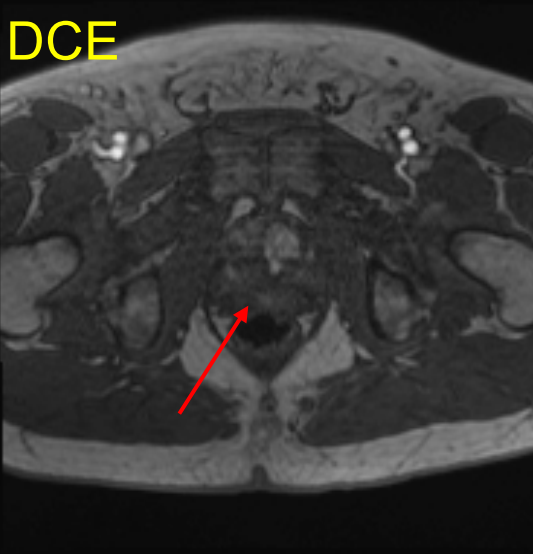
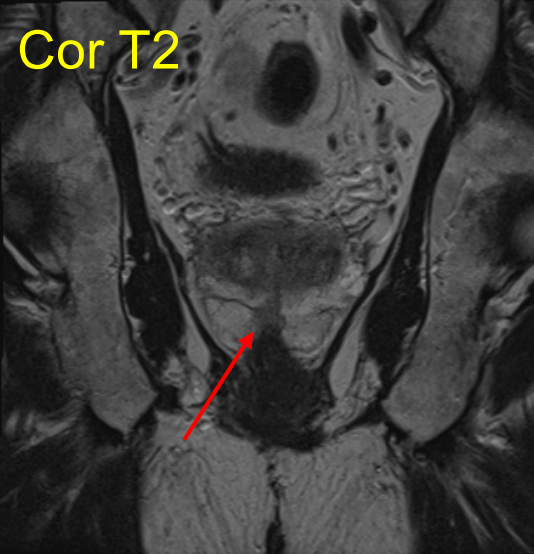
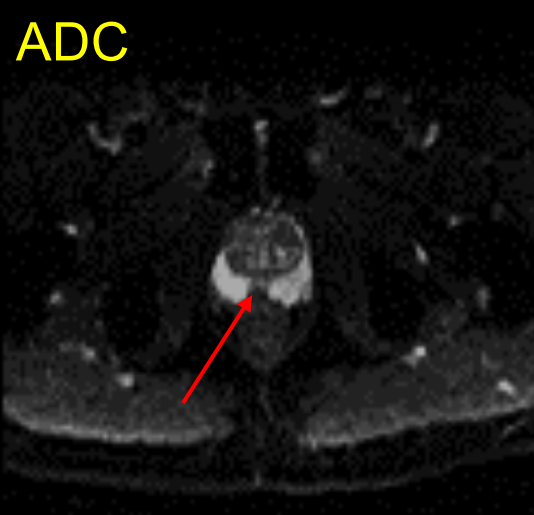
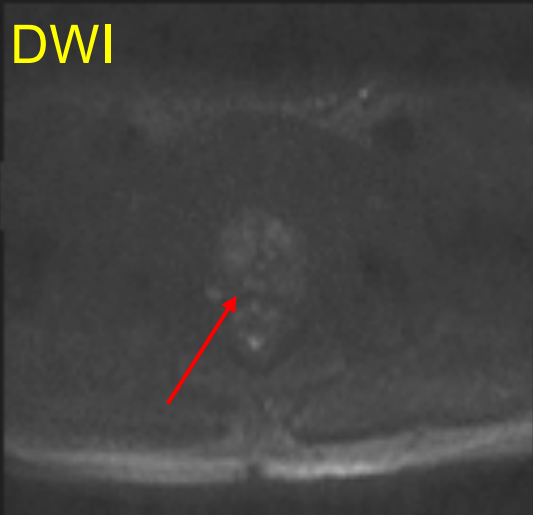
Mimicker of Prostate Cancer

Silvia D. Chang, MD, FRCPC, FSAR
Associate Professor
Department of Radiology
University of British Columbia

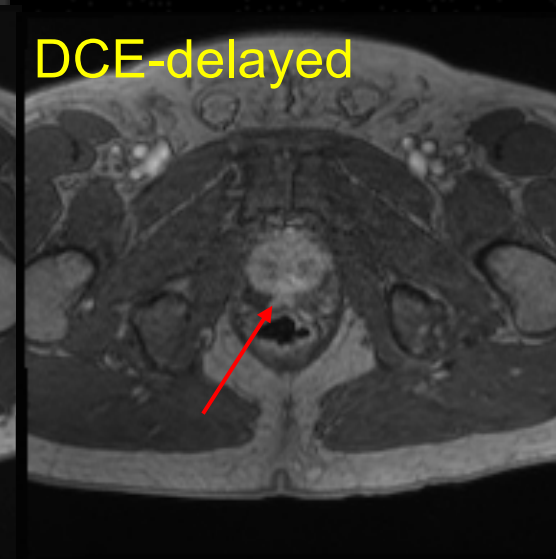
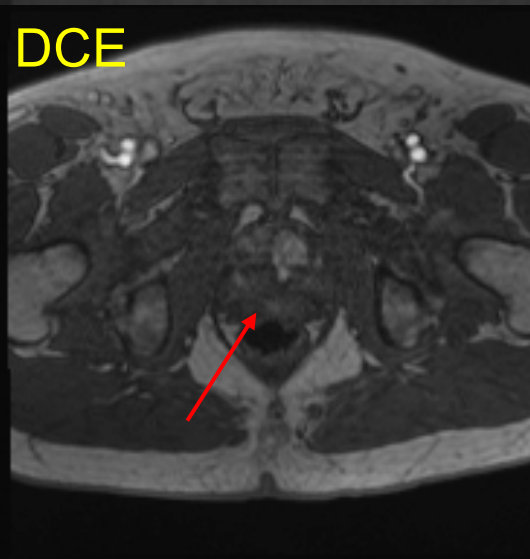
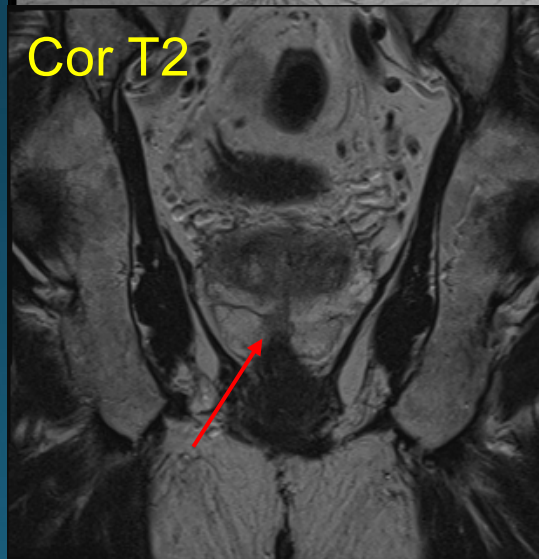
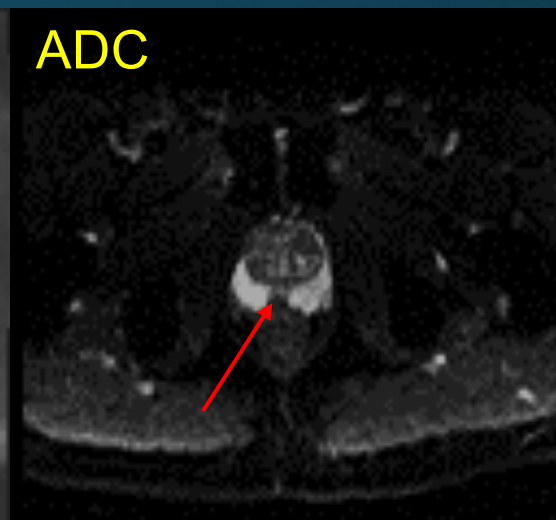


History

- 69 year old man with PSA of 9.4

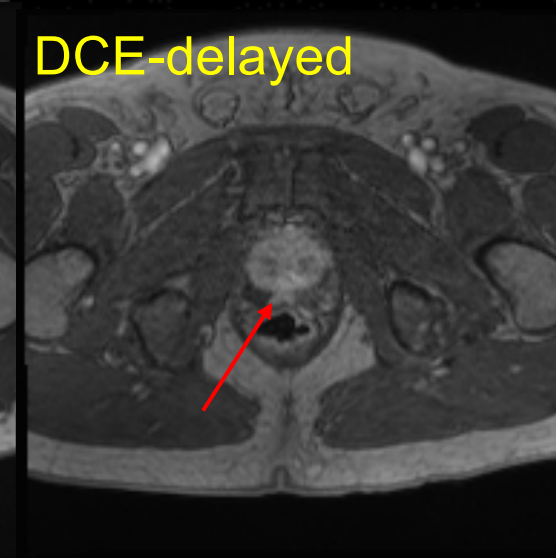
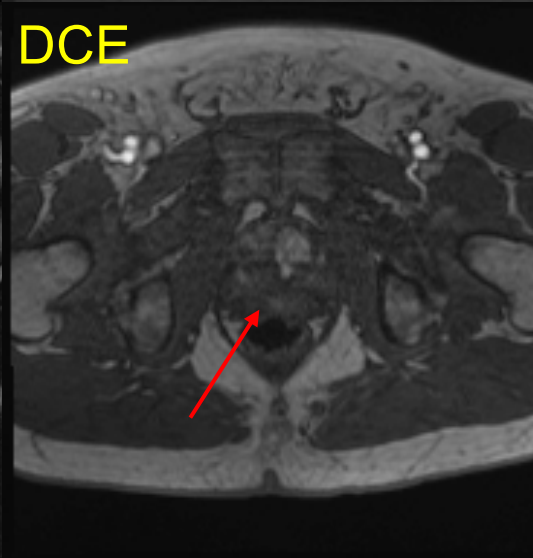
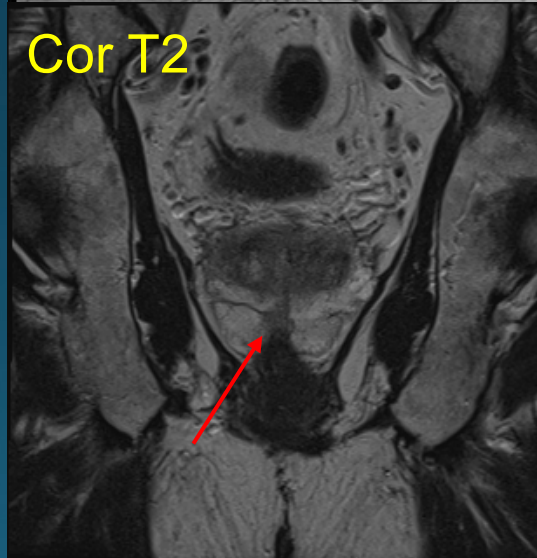
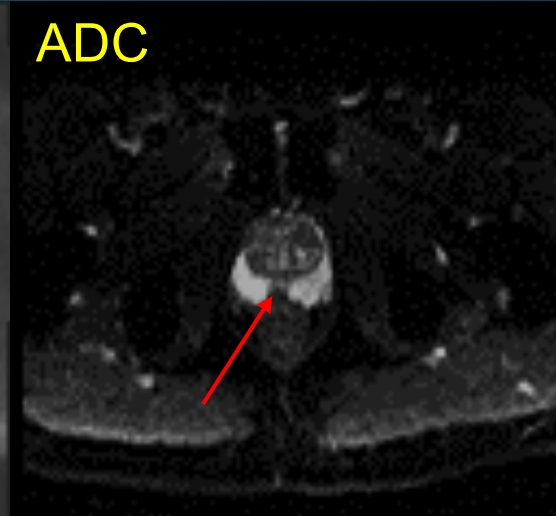
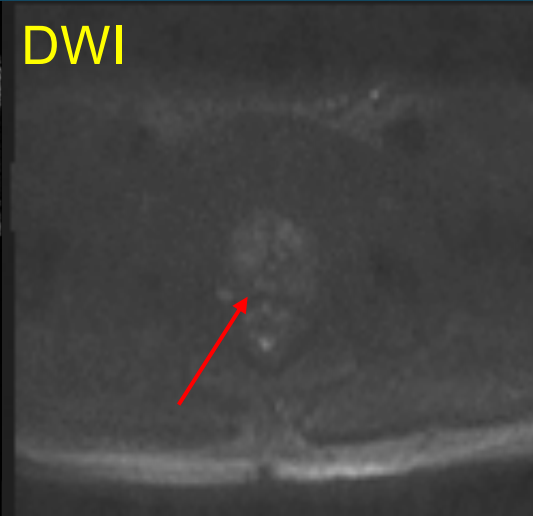
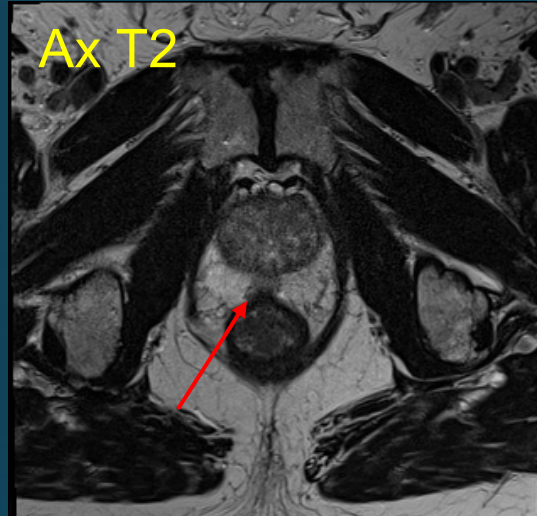


Hypointense T2 focus in midline PZ with mild restricted diffusion and delayed enhancement.



Hypointense T2 focus in midline PZ with mild restricted diffusion and delayed enhancement.

Targeted biopsy: negative in keeping with thickened capsular and fascial insertion



CAPSULE AND FASCIA INSERTION AT MIDLINE PERIPHERAL ZONE

- Focal thickening at site of fusion of the posterior prostatic capsule and Denonvillier fascia in the midline.
- Composed of collagenaceous fibers and occasional muscle fibers.
- Low T2 signal intensity
- May show some restricted diffusion, low ADC.

Yu J et al. Br J Radiol 2014;87:20130659.

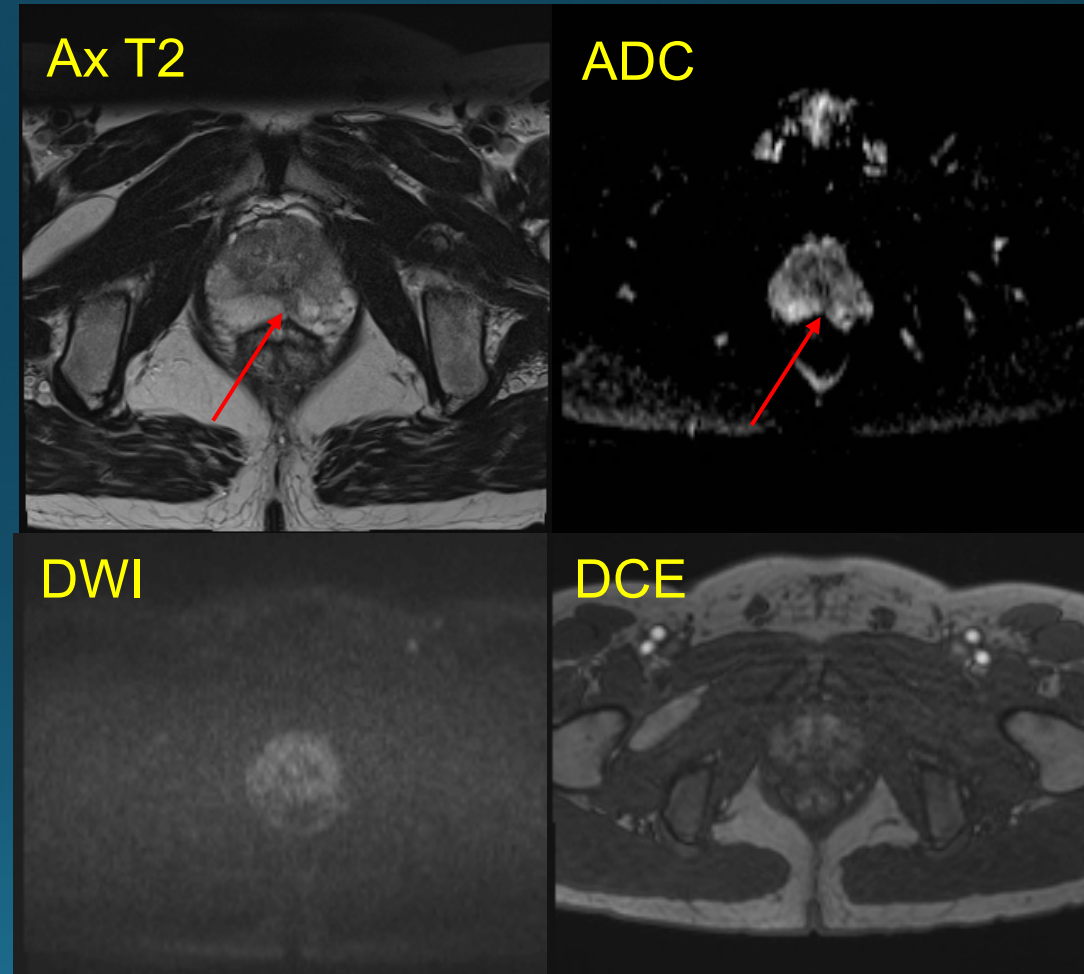
Kiyoshima k et al. J Clin Oncol2004; 34: 463 –8.

Thomas S and Oto A. Radiol Clin N Am. 2018(56) 277–287.

CAPSULE AND FASCIA INSERTION AT MIDLINE PZ

Imaging features to help distinguish from Prostate Cancer:

- Low T2 signal focus is located at the midline.
- Contour of prostate at this location is concave
- Lack of rapid enhancement or washout



Yu J et al. Br J Radiol 2014;87:20130659.
Kiyoshima k et al. J Clin Oncol2004; 34: 463 –8.
Thomas S and Oto A. Radiol Clin N Am. 2018(56) 277–287.

Another case