

State Committees

August 1, 2024 – July 31, 2025

Committees are essential to the mission and vision of ACEC New York. The work of these committees affects all aspects of the engineering profession, from legislative advocacy to environmental issues.

Committees offer more than a significant opportunity to impact the professional environment:

- *Committee work is often highly educational and interactive.*
- *Members share information that can improve their business practices and help make their firms more profitable and successful, and their efforts support the industry as a whole.*
- *Committee involvement is a great way to build connections with people throughout the organization and the entire industry.*

As you can see on the following pages, there is an ACEC New York committee for virtually every interest, and each one is important to the organization and the industry. If you are interested in serving on a committee, please sign up through your firm when participation forms are issued to the main contact at each member firm in the Spring.

NOTE: *To search within the PDF, press CTRL + F to open a search bar and enter firm name.*

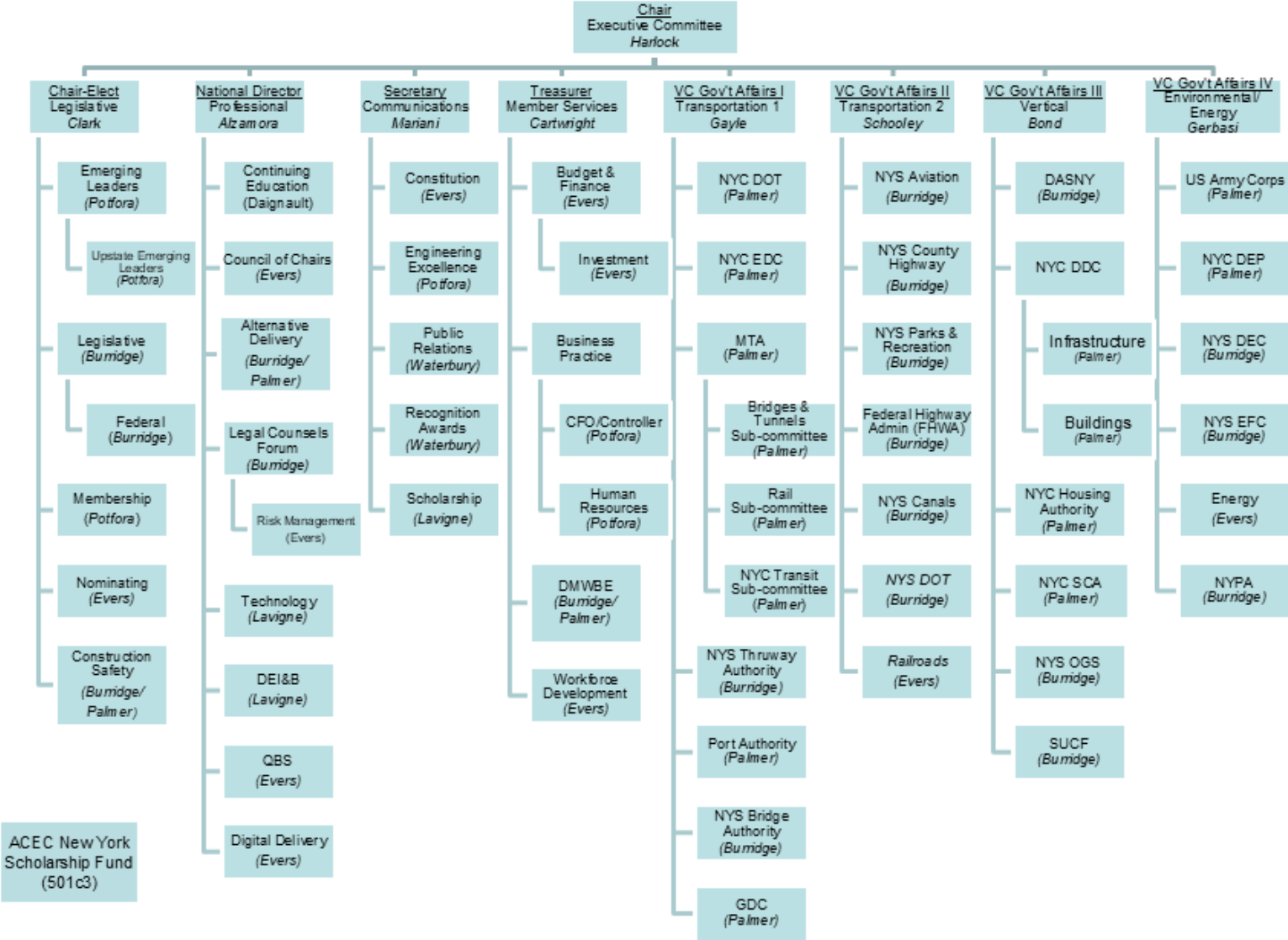
Table of Contents

ACEC New York Organizational Chart	4
Legislative Affairs Division	
Nancy Clark, Executive Committee Liaison	
Emerging Leaders Committee	5
Legislative Committee	6
1) Federal Committee/ACECPAC	8
Membership Committee	8
Nominating Committee	9
Construction Safety Committee	10
Professional & Industry Division	
Arthur Alzamora, Executive Committee Liaison	
Continuing Education Committee	11
Council of Chairs Committee	11
Alternative Delivery Committee	12
Legal Counsels Forum	12
Technology Committee	14
DEIB Committee	14
QBS Committee	15
Digital Delivery Committee	15
Communications Division	
Jessica Mariani, Executive Committee Liaison	
Constitution Committee	16
Engineering Excellence Committee	16
Public Relations Committee	17
Recognition Awards Committee	18
Scholarship Committee	18
Scholarship Fund Committee (separate 501c3)	19
Member Services Division	
Robert Cartwright, Executive Committee Liaison	
Budget & Finance Committee	20
1) Investment	20
Business Practice Committees:	
1) CFO/Controller Committee	20
2) Human Resources Committee	21
DMWBE Committee	22
Workforce Development Committee	23
Government Affairs I – Transportation 1 Division	
Oneil Gayle, Executive Committee Liaison	
NYC Department of Transportation Committee	24
NYC Economic Development Corporation Committee	24
Metropolitan Transportation Authority Committees	24
1) Bridges & Tunnels Sub-committee	24
2) Rail (MNR, LIRR) Sub-committee	25

Table Contents

3) NYC Transit Sub-committee	25
NYS Thruway Authority Committee	25
Port Authority of New York & New Jersey Committee	25
NYS Bridge Authority Committee	26
Gateway Development Committee	26
Government Affairs II – Transportation 2 Division	
Matt Schooley, Executive Committee Liaison	
NYS Aviation Committee	27
NYS County Highway Superintendents Committee	27
NYS Parks & Recreation Committee	27
Federal Highway Administration (FHWA)	27
NYS Canals Committee	28
NYS Department of Transportation Committee	28
Railroads Committee	28
Government Affairs III – Vertical Division	
Chris Bond, Executive Committee Liaison	
Dormitory Authority of the State of New York Committee	29
NYC Department of Design & Construction Committee	29
NYC Housing Authority Committee	29
NYC School Construction Authority Committee	30
NYS Office of General Services Committee	30
State University Construction Fund Committee	30
Government Affairs IV – Environmental/Energy Division	
Peter Gerbasi, Executive Committee Liaison	
US Army Corps of Engineers Committee	31
NYC Department of Environmental Protection Committee	31
NYS Department of Environmental Conservation Committee	31
NYS Environmental Facilities Corporation Committee	31
Energy Committee	32
New York Power Authority Committee	32

ACEC New York 2024-2025 Committee Organizational Chart



LEGISLATIVE AFFAIRS DIVISION
Nancy Clark - Executive Committee Liaison

Emerging Leaders Committee

Chair: Matthew Nayer
NV5
Matthew.nayer@nv5.com

Vice-Chairs:

Upstate
Sarah Carroll
Creighton Manning Engineering, LLP
scarroll@cmellp.com

Downstate
Joseph Pokorny
Gannett Fleming TranSystems
jpokorny@gfnet.com

Members:

Elizabeth Adkins	Langan Engineering, Environmental, Surveying, Landscape Architecture and Geology, DPC
Keyana Aghamirzadeh	Dewberry
Alex Akselrod	IMEG
Zane Amray	ZOFS Engineering, P.C.
Victoria Arbitrio	Gilsanz Murray Steficek, LLP
Alison Auriemmo	H2M architects + engineers
Samira Ayati	IVY Engineering Group
Jeanette Baiardi	AKF Group LLC
Sharon Berger	Gannett Fleming TranSystems
Oscar Bustos	STV Incorporated
Catarina Carvalho	Arup
Andrew Chase	LiRo-Hill
Francisco Contreras	TYLin
Jerry Craig	Ryan Biggs Clark Davis Engineering & Surveying, D.P.C.
Charlie Cunningham	Erich Arcement Creative Engineering, P.C
Michael DeGaspari	VHB Engineering, Surveying and Landscape Architecture, P.C.
JD DesLoges	Jaros, Baum & Bolles
Chris Dorman	Michael Baker International, Inc.
Danielle Edwards	AECOM
Alex Engelman	Syska Hennessy Group, Inc.
Cindy Feinberg	Jacob, Feinberg, Katz & Michaeli Consulting Group
Jacob Fradkin	MFS Engineers & Surveyors
Andrew Franceschina	Loring Consulting Engineers, Inc.
Joshua Gardner	Azar Design Co, Architecture, Landscape Architecture, Engineering and Surveying, P.C.
Steven Gerazounis	MG Engineering D.P.C.
Ritwik Kakati	Dagher Engineering, PLLC
Lori Katzman	HNTB New York Engineering and Architecture, P.C.
Veronica Kelly	Stantec Consulting Services Inc.
Connie Lamos	Infrastructure Engineering, Inc., P.C.
Cristian Liriano	Liriano & Associates Engineering, Consulting Services PLLC
David Long	JMT of New York, Inc.
Dan Maher	PS&S
Michael Martello	Kiewit Engineering (NY) Corp.
Ekaterina McConville	Mott MacDonald
Dylan McDermott	HDR
Nicole Melendez	Parsons
Andrew Milne	C&S Companies

Michael Mudalel	MFS Engineers & Surveyors
Alexander Napoli	STV Incorporated
Roma Parikh	STV Incorporated
Ronak Patel	MP Engineers and Architects, P.C.
Jorge Patino Velasquez	JMT of New York, Inc.
Asher Peltz	GEI Consultants, Inc., P.C.
Chad Reinemann	Ryan Biggs Clark Davis Engineering & Surveying, D.P.C.
Jessica Ross	Colliers Engineering & Design
Mike Scanlon	P.W. Grosser Consulting Engineer & Hydrogeologist, PC
Joshua Schmidt	Fisher Associates, P.E., L.S., L.A., D.P.C.
Daniel Schmidt	Gannett Fleming TranSystems
Julianna Seddio	CSA Group NY Architects & Engineers, PC
Peter Taggart	Greenman-Pedersen, Inc.
Sophia Tampakis	IMEG
Eric Tauro	WSP USA Inc.
Jeff Villacres	LERA Consulting Structural Engineers
Julie Vuotto	Langan Engineering, Environmental, Surveying, Landscape Architecture and Geology, DPC
Walt Walker	Greeley and Hansen LLC
Lauren Weber	Jacobs
Victoria Whelan	GZA GeoEnvironmental of New York
Alexandra Willey	H&H
Wael Youssef	Kiewit Engineering (NY) Corp.

Legislative Committee

Chair

Maria Lehman
GHD Consulting Services, Inc.
maria.lehman@ghd.com

Members:

Rich Amadon	CHA
Joseph R. Amato	IMEG
Richard Amodei	STV Incorporated
Nick Anastasi	P.W. Grosser Consulting Engineer & Hydrogeologist, PC
Vicki Arbitrio	Gilsanz Murray Steficek, LLP
Samira Ayati	IVY Engineering Group
Jeanette Baiardi	AKF Group LLC
James Baker	Foundation Design PC
Robert A. Banner	Ingram Yuzek Gainen Carroll + Bertolotti LLP
Schillivia Baptiste	Baptiste Engineering
Mellanie Bennett-Monclova	Mott MacDonald
Sharon Berger	Gannett Fleming TranSystems
Justin Bernbach	HNTB New York Engineering and Architecture, P.C.
John Boule	Dewberry
Wayne Bonesteel	Azar Design Co, Architecture, Landscape Architecture, Engineering and Surveying, P.C.
Donyelle Booker	COWI
John F. Brusa Jr.	Barton & Loguidice, D.P.C.
Tony Canale	Mueser Rutledge
Robert Cartwright	WSP USA Inc.
Vincent Cassano	Jacobs
Jerry Cavaluzzi	Kennedy/Jenks Consultants and KJ Engineers and Geologists of New York PC
David Chamber	Delta
Mark Chancy	Mott MacDonald
Jane Charalambous	HDR
Nancy Clark	KC Engineering and Land Surveying, P.C.
Kevin Collins	HNTB New York Engineering and Architecture, P.C.
Daniel Colombini	Goldman Copeland Associates, PC

Charles Copeland	Goldman Copeland Associates, PC
Tom Curran	Stantec Consulting Services Inc.
Tom Crane	EnTech Engineering, P.C.
Raymond Daddazio	Thornton Tomasetti
Nick Dandolo	Gannett Fleming TranSystems
John Deerkoski	Thornton Tomasetti
Frank DelSignore	CHA
Bernadette DeVito	Constantinople & Vallone Consulting
Michael DiSabato	Parsons
Nancy Doon	VHB
Daniel Duprey	CPL
Cindy Feinberg	Jacob, Feinberg, Katz & Michaeli Consulting Group
Michael Fleischer	Brown & Weinraub
Donald Fletcher	Barton & Loguidice, D.P.C
John Gasparine	WSP USA Inc.
Peter Gerbasi	LiRo-Hill
Reza Ghasemi	Mott MacDonald
Brett Gough	Ames & Gough, Inc.
Charles Gozdziwski	H&H
Carl Ian Graham	C.I. Graham Sustainable Energy
Bryan Grogan	P.W. Grosser Consulting Engineer & Hydrogeologist, PC
Ariganjan (Gary) Guleria	A.G. Consulting Engineering, PC
Douglas R. Halstrom	L'Abbate, Balkan, Colavita & Contini, L.L.P.
Julie Harris	Lu Engineers
Ryan Henderson	JMT of New York, Inc.
Richard Horstmann	Azar Design Co, Architecture, Landscape Architecture, Engineering and Surveying, P.C.
Robert Hutteman	Lu Engineers
Greg Hutter	Popli Design Group
Tariq Islam	AI Engineers, Inc., P.C.
Jerry Jannetti	WSP USA Inc.
Cawsie Jijina	Severud Associates Consulting Engineers P.C.
Walter Kaeck	Mueser Rutledge Consulting Engineers
Hope Kaufman	Dewberry
Omar Khan	WSP USA Inc.
Peter Koklanos	LiRo-Hill
James Laurita	Gannett Fleming TranSystems
Cristian Liriano	Liriano & Associates Engineering, Consulting Services PLLC
Orrin B. MacMurray	C&S Companies
Eric Madden	JMT of New York, Inc.
Radhi Majmudar	Innovative Structural and Specialty Engineering
Joseph Manzella	H2M Architects, Engineers, Land Surveying and Landscape Architecture, DPC dba H2M architects + engineers
Michael Marino	Nussbaumer & Clarke, Inc.
William McCormick	Erdman Anthony
James McDuffee	Delta Engineers, Architects, & Land Surveyors, PC
Chris McHugh	AKF Group
Malcom McLaren	M.G. McLaren, PC, d/b/a McLaren Engineering Group
Thomas McLaughlin	HDR
Brian Miller	LaBella Associates, D.P.C.
Paul Millman	SUPERSTRUCTURES Engineering + Architecture, PLLC
Mia Nadasky	HVEA Engineers
Sanjay Naik	Naik Consulting Group, P.C.
Nigel Nicholls	Arup
Karim Palomino	EnTech Engineering, P.C.
Shivani Patel	Jacobs
Rachael Philipson	Brown & Caldwell
Raymond Pinto	Parsons Corporation

Joseph Pizzuro	VHB Engineering, Surveying and Landscape Architecture, P.C.
David Pollicino	IMEG
Jonathan Reyes	Constantinople & Vallone Consulting
Matthew Roe	Stantec Consulting Services, Inc.
Lee Sackett	L'Abbate, Balkan, Colavita & Contini, L.L.P.
Andy Sandor	AtkinsRealis
Roseann Schmid	Fisher Associates, P.E., L.S., L.A., D.P.C.
Thomas Schoettle	CDM Smith
Samuel Schwartz	Sam Schwartz Engineering, DPC
Martin Schwartzberg	Marshall Dennehey Warner Coleman & Goggin, P.C.
Jerry Sentz	Azar Design Co, Architecture, Landscape Architecture, Engineering and Surveying, P.C.
Mike Shamma	TY Lin
Kirsten Sibilia	Dattner Architects
Emily Smith	Fisher Associates, P.E., L.S., L.A., D.P.C.
Julie Stein	HDR
Dan Sweetland	C&S Companies
Tim Treharne	Arup
Joe Tulumello	Gannett Fleming
Mark Tytka	WSP USA Inc.
Genaro Velez	COWI
Richard Venvertloh	LaBella Associates, D.P.C.
Timothy Walck	Wendel WD Architecture, Engineering, Surveying and Landscape Architecture, P.C.
David Weiss	WSP USA Inc.
Stephen Willig	Donovan Hatem LLP
Susan Wylie	LaBella Associates, D.P.C.
Peter Young	Hazen and Sawyer
Catherine Zinnel	VHB Engineering, Surveying and Landscape Architecture, P.C.

Federal Sub-Committee/ACEC PAC

Chair: Lee Ecker
CHA
lecker@chacompanies.com

Members:

Vicki Arbitrio	Gilsanz Murray Steficek LLP
Schillivia Baptiste	Baptiste Engineering
Elena Barnett	HDR
Christopher Bond	Hunt Engineers, Architects, Land Surveyors & Landscape Architect, DPC
Robert Cartwright	WSP USA Inc.
Ginger Croom	CDM Smith
Ray Daddazio	Thornton Tomasetti
Jamie Davis	Ryan-Biggs Clark Davis Engineering & Surveying
Dino DeFeo	AKF Group LLC
Cindy Feinberg	Jacob, Feinberg, Katz & Michaeli Consulting Group
Indhira Figuereo	WSP USA Inc.
Charles Gozdziwski	H&H
Sachin Gajwani	Brown & Caldwell
Keith Harlock	WSP USA Inc.
Jim Hirani	Hirani Engineering & Land Surveying, P.C.
Shelly Johnston	Creighton Manning Engineering, LLP
John Karn	Arup
Omar Khan	WSP USA Inc.
Charles Manning	Global Infrastructure Solutions Inc.

Jessica Mariani	HVEA Engineers
Christopher McDermott	AECOM
Thomas McLaughlin	HDR
Bernie McNeilly	Liro-Hill
Brian Miller	LaBella Associates, D.P.C.
Sajid Sheikh	Enovate
Emily Smith	Fisher Associates, P.E., L.S., L.A., D.P.C.

Membership Committee

Chair: Nancy Clark
 KC Engineering and Land Surveying, PC
 nclark@kcepc.com

Members:

Arthur Alzamora	Langan Engineering, Environmental, Surveying, Landscape Architecture and Geology, DPC
Elena Barnett	HDR
Sue Bayat	EnTech Engineering, P.C.
Christopher Bond	Hunt Engineers, Architects, Land Surveyors & Landscape Architect, DPC
John Boule	Dewberry
Ammon Bush	Shumaker Consulting Engineering & Land Surveying, D.P.C.
Rhonda Cardone	Dewberry
Chris Carter	Stantec Consulting Services, Inc.
Robert Cartwright	WSP USA Inc.
Thomas Cascino	AECOM
Stephen Conenna	Columbia Consulting Engineers, PLLC
John Deerkoski	Thornton Tomasetti
Dino DeFeo	AKF Group LLC
Ted Fox	JMT of New York, Inc.
Karen Franz	AKRF, Inc.
Ashley Freeman	Popli, Architects + Engineering & L.S., D.P.C. dba Popli Design Group
Philip Galbo	Watts Architecture & Engineering, D.P.C.
Alexa Gangemi	HNTB New York Engineering and Architecture, P.C.
Oneil Gayle	Loring Consulting Engineers, Inc.
Peter Gerbasi	LiRo-Hill
Craig Hahn	Vachris Engineering, P.C.
Keith Harlock	WSP USA Inc.
Julie Harris	Lu Engineers
John Hubert	WSP USA Inc.
Sarwat Izhar	SI Engineering Inc.
Cyrus Izzo	Syska Hennessy Group, Inc.
Sarah Jampole	VHB Engineering, Surveying and Landscape Architecture, P.C.
Rahul Joag	LERA Consulting Structural Engineers
Helga Junold	ARCADIS
Dennis Kennelly	T.Y. Lin International Engineering & Architecture, P.C
Joseph Manzella	H2M architects + engineers
Jessica Mariani	HVEA Engineers
Christopher McDermott	AECOM
Bryan McDermott	Jacobs
Thomas McLaughlin	HDR
Christina Minkler	JMT of New York, Inc.
Patrick Nicoletta	MRB Group, Engineering, Architecture and Surveying, D.P.C.
Aine O'Dwyer	Enovate
Karim Palomino	EnTech Engineering, P.C.
Kabi Pandey	IMEG
Rick Papaj	Ravi Engineering and Land Surveying, P.C.
Peter Pappas	STV Incorporated

Phil Parisi	MG Engineering D.P.C.
Linda Reardon	NV5
Jessica Ross	Colliers Engineering & Design
Matthew Schooley	Barton & Loguidice, D.P.C.
Shila Shah	AECOM
Mike Shamma	Sam Schwartz Engineering, DPC
Ehab Shehata	BRAVO
Cassandra Wetzell	GZA GeoEnvironmental of New York
Kirk Wilson	Lu Engineers

Nominating Committee

Chair: Arthur Alzamora
Langan Engineering, Environmental, Surveying, Landscape
Architecture and Geology, DPC
aalzamora@langan.com

Members: Raymond Daddazio Thornton Tomasetti
Dan Duprey CPL
Rick Zottola LERA Consulting Structural Engineers

Construction Safety Committee

Chair: Douglas Glorie
STV Incorporated
douglas.glorie@stvinc.com

Members: Christo Basson Mott MacDonald
Robert Cartwright WSP USA Inc.
Ted Fox JMT of New York, Inc.
John Grady Ravi Engineering and Land Surveying, P.C.
Quaiser Hashmi ATANE Design and Construction Consultants
Brian Jones Creighton Manning Engineering, LLP
Doug Maas Cosentini Associates – a Tetra Tech Company
Brenden O’Shea H&H
Robert Romance STV Incorporated
Billy Rynne Brown & Caldwell Associates
Greg Shaw Stantec Consulting Services, Inc.
Ryan Stecher Jaros, Baum & Bolles
Mazher Usmani Dewberry
Michael Vardaro Zetlin & De Chiara LLP
Joe Pokorny (Emerging Leader Rep) Gannett Fleming TranSystems

PROFESSIONAL & INDUSTRY DIVISION
Arthur Alzamora - Executive Committee Liaison

Continuing Education Committee

Chair: Phil Galbo
Watts Architecture & Engineering, D.P.C.
pgalbo@watts-ae.com

Members:

Eric Alderson	Promark Associated Agencies, Inc.
Andy Arifin	Arup
Eric Chan	IMEG
Julia Dockum	McFarland-Johnson, Inc.
Mark Drozdov	Lozier, Inc.
Brian Healy	JMT Of New York, Inc.
Ramsey Kahi	Lu Engineers
Ryan Lean	Jaros, Baum & Bolles
John McCarthy	Risk Strategies
Sarah Meskunas	Dewberry
Jeffrey Messinger	STV Incorporated
Kriton Pantelidis	Risk Strategies
Paul Pizzimenti	Haley & Aldrich of New York, LLP
Paul Rouis	Ryan Biggs Clark Davis Engineering & Surveying, D.P.C.
Konstantinos Syngros	Langan Engineering, Environmental, Surveying, Landscape Architecture and Geology, DPC
Sophia Tompakis	IMEG
Joseph Viola	WSP USA Inc.
Charles White	Barton & Loguidice, D.P.C

Council of Chairs Committee

Chair: Arthur Alzamora
Engineering, Environmental, Surveying, Landscape
Architecture and Geology, DPC
aalzamora@langan.com

Members:

Joseph Amato	IMEG
Thomas Cascino	AECOM
Andrew Ciana	Langan Engineering, Environmental, Surveying, Landscape Architecture and Geology, DPC
Raymond Daddazio	Thornton Tomasetti
Dan Duprey	CPL
Charles Gozdziwski	H&H
Gregory Kelly	STV Incorporated
Michael Leydecker	Wendel WD Architecture, Engineering, Surveying and Landscape Architecture, P.C.
Orrin MacMurray	C&S Companies
Richard McFadden	Jaros, Baum & Bolles
Thomas McLaughlin	HDR
Robert Radley	T.Y. Lin International Engineering and Architecture, P.C.
Mitchel Simpler	Jaros, Baum & Bolles
Rick Zottola	LERA Consulting Structural Engineers

Alternative Delivery Committee

Steering Committee

Chair: Chris Sklavounakis
HDR
Chris.Slavounakis@hdrinc.com

Vice-Chair: Xiaohu Fan Gannett Fleming TranSystems

Steering Members: Schillivia Baptiste Laland Baptiste
David DeLuca H&H
Scott Geiger WSP USA Inc.
Chuck Kohler STV Incorporated
Bernie McNeilly LiRo-Hill
Ray Pinto Parsons
Beverly Strachan Prudent Engineering

Open Committee Members:

Wahid Albert	AECOM
Simon Rule	Arup
Hugh Harrington	AtkinsRealis
Matthew Bruce Brown	Brown and Caldwell Associates
Tim Andersen	C&S Companies
Tony Borrelli	Colliers Engineering & Design
John Murray	Delve Underground Engineering, PLLC
Keith Itzler	Dewberry
Maria Lehman	GHD Consulting Services Inc.
Edward Zamiskie	Haley & Aldrich of New York, LLP
Fred Tallarico	Jacobs
Matt Alexander	Jaros, Baum & Bolles
Wayne Faulkner	JMT of New York, Inc.
Raj Ravilla	KC Engineering and Land Surveying, P.C.
Kamal Shahid	KS Engineers, PC
Hamid Fallah	Langan
Mike Sidani	Michael Baker Engineering, Inc.
Rich Giffen	Mott MacDonald
Mark Chancy	Mott MacDonald
Eric Mackin	NV5
Andrew Malek	PS&S
Paul Rouis	Ryan Biggs Clark Davis Engineering & Surveying, D.P.C.
James Rashford	Stantec Consulting Services Inc.
Sergiu Pelau	Syska Hennessy Group, Inc.
Tabot Eneme	TYLin
Michelle Jordan	TYLin
Joan Verbón	TYLin
Tom Velleca	VHB Engineering, Surveying and Landscape Architecture, P.C.
Krupesh Patel	ZOFS Engineering P.C.

Legal Counsels Forum

Staff Liaison: John Evers, ACEC New York

Chair: Joseph Dennis
ARUP
Joseph.Dennis@Arup.com

Members:

Jeanette Baiardi	AKF Group LLC
Renard Barnes	PS&S / AJS Shared Services
Scott Beratan	HDR
Sara Biser	FoxRothschild, LLP
Daniel Boriello	Thornton Tomasetti
Gregg Bundschuh	Greyling Insurance Brokerage
Annalee Cataldo	Kosakoff & Cataldo LLP
Gerry Cavaluzzi	Kennedy/Jenks Consultants and KJ Engineers and Geologists of New York PC
Howard Cohen	AECOM
Kent Collier	Greyling Insurance Brokerage
Audrey Daly	Gannett Fleming TranSystems
Nikki Dames	Gannett Fleming TranSystems
Michael De Chiara	Zetlin & De Chiara LLP
Joseph Dennis	Arup
Ona Dudonis	Enovate
Duncan Findlay	GHD Consulting Services, Inc.
Ken Fisher	Cozen O'Connor
Eric Gernant	Ramboll
Jordan Green	GHD
Doug Halstrom	L'Abbate, Balkan, Colavita & Contini, L.L.P.
Jared Hand	Langan Engineering, Environmental, Surveying, Landscape Architecture and Geology, DPC
Judith Held	STV Incorporated
Lena Holohan	Arup
Hillary Jassey	WSP USA Inc.
Lindsay Johnson	Langan
Charles Kim	ACEC
Michael Klerer	Mott MacDonald
Julie Lee	WSP USA Inc.
Harry Makris	Milber Makris Plousadis & Seiden, LLP
Erin Margolius	CDM Smith
John McCarthy	Bolton-St. Johns, LLC
William McCarthy	Bolton-St. Johns, LLC
Barbara McLemore	Gannett Fleming
Eric Morgenweck	AKRF, Inc.
Kriton Pantelidis	Risk Strategies
Michael Platt	CHA
Shoshana Rosenberg	WSP USA Inc.
William Rospars	H2M architects + engineers
Sushmita Roy	LiRo-Hill
Lee Sacket	L'Abbate, Balkan, Colavita & Contini, L.L.P.
Sean Schoenborn	Colliers
Martin Schwartzberg	Marshall Dennehey Warner Coleman & Goggin, P.C.
Peter Seiden	Milber Makris Plousadis & Seiden, LLP
Jennifer Smith	C&S Companies
Keith Stevens	L'Abbate, Balkan, Colavita & Contini, L.L.P.
Jeff Stone	Stantec Consulting Services Inc.
Lina Telese	JB&B
Thomas Titsworth	CHA
Michael Vardaro	Zetlin & De Chiara LLP
Scott Winikow	Donovan Hatem

Technology Committee

Chairs:

Jim Dray
Thornton Tomasetti
jdray@thorntomasetti.com

Sam Ishak
Langan Engineering, Environmental, Surveying,
Landscape Architecture and Geology, DPC
sishak@langan.com

Guy Pascarello
AKRF, Inc.
gpascarello@akrf.com

Members:

Gustavo Amaris	Severud Associates Consulting Engineers PC
Jonathan Ball	Loring Consulting Engineers, Inc.
Alex Cabrera	AKF Group LLC
Jay Conti	Jaros, Baum & Bolles
Dan Corey	STV Incorporated
Brian Cresenzi	Gannett Fleming TranSystems
Jim Crisanti	McFarland-Johnson, Inc.
Jose Delacruz	Dattner Architects
John DiCamillo	Arup
Jason Dodds	VHB Engineering, Surveying and Landscape Architecture, P.C.
Rick Gobeille	Stantec Consulting Services Inc.
Lauren Groff	Groff NetWorks
Gene Irving	Dewberry
Ritwik Kakati	Dagher Engineering, PLLC
James LaMaire	PS&S
Brent Long	Fisher Associates, P.E., L.S., L.A., D.P.C.
Greg Luchese	P.W. Grosser Consulting Engineer & Hydrogeologist, P.C.
John McCaffrey	H2M architects + engineers
Emily McKee	PRIME AE Group of NY
Tibor Menyhart	STV Incorporated
Rubens Mulla	CSA Group NY Architects & Engineers, PC
Kamron Naderkhani	IronOrbit
Mike Nilson	Langan Engineering, Environmental, Surveying, Landscape Architecture and Geology, DPC
Frederick Noel	Syska Hennessy Group, Inc.
Erik Quinn	C&S Companies
Justin Racelis	Stantec Consulting Services Inc.
Ilario Scarcia	Jacobs
Michael Soyfer	IMEG Consultants Corp
Larry Spraker	VHB Engineering, Surveying and Landscape Architecture, P.C.
Patrick Tennant	Lizardos Engineering Associates, P.C.
Jaak Vandensype	HDR
Sean Williams	Citrin Cooperman & Co., LLP
Joshua Gardner (Emerging Leader Rep)	Azar Design Co, Architecture, Landscape Architecture, Engineering and Surveying, P.C.

DEIB Committee (established June 2021)

Chair:

Karen Franz
AKRF, Inc.
kfranz@akrf.com

Members:

Maria Alarcon	Dewberry
Donyelle Booker	COWI
Karaline Bridgeford	Brown and Caldwell Associates
Vanessa Cifuentes	GPI
Nancy Clark	KC Engineering and Land Surveying, PC

Monet Dowrich	CSA Group NY Architects & Engineers, PC
Joniel Edwards	WSP USA Inc.
Terry Hopkins	C&S Companies
Jermaine Huell	WSP USA Inc.
Raim Izhar	SI Engineering, P.C.
Christopher LaTuso	HDR
Cristian Liriano	Liriano & Associates Engineering, Consulting Services PLLC
Val Loh	Syska Hennessy Group, Inc.
Abdiel Lopez-Torres	AECOM
Kristin Munoz	HDR
Sushmita Roy	LiRo-Hill
Lisa Santoro	HNTB New York Engineering and Architecture, P.C.
Kimberley Scott	Jacobs
Roxanna Thomas	Mott MacDonald
Ed Watts, Jr.	Watts Architecture & Engineering, D.P.C.

QBS Committee

Chair: Bernie McNeilly
LiRo-Hill
McNeillyB@LiRo-Hill.com

Members: Erik Atkins McFarland Johnson, Inc.
Samira Ayati IVY Engineering Group PLLC
Robert Cartwright WSP USA Inc.
Kevin Collins HNTB New York Engineering and Architecture, P.C.
Jon Hartley Stantec Consulting Services, Inc.
Raim Izhar SI Engineering, P.C.
Luke Martinek HDR
Christopher Pierce Wright Pierce
David Vieni WSP USA Inc.

Digital Delivery Committee

Chair: Scott Lagace
WSP USA Inc.
Scott.Lagace@wsp.com

Members: Jeff Berg Arup
Michael Croce Colliers Engineering & Design
Michael (Mike) Fuller JMT of New York, Inc.
Keith Harlock WSP USA Inc.
Brad Hollister Stantec Consulting Services Inc.
Aditi Patel LiRo-Hill
Nachiket Phansalkar Stantec Consulting Services
Nicholas Rescigno Modjeski and Masters, Inc.
Otto Schwartz Ryan Biggs | Clark Davis Engineering & Surveying, D.P.C.
Pete Wlodarczyk Fisher Associates, P.E., L.S., L.A., D.P.C.
Dylan McDermott (Emerging Leader Rep) HDR

COMMUNICATIONS DIVISION

Jessica Mariani - Executive Committee Liaison

Constitution Committee (EXCOM)

Chair: Jessica Mariani
HVEA Engineers
jmariani@hveapc.com

Members:

Arthur Alzamora	Langan Engineering, Environmental, Surveying, Landscape Architecture and Geology, DPC
Chris Bond	Hunt Engineers, Architects, Land Surveyors & Landscape Architect, DPC
Robert Cartwright	WSP USA Inc.
Nancy Clark	KC Engineering
Oneil Gayle	Loring Consulting Engineers, Inc.
Peter Gerbasi	LiRo-Hill
Keith Harlock	WSP USA Inc.
Matthew Schooley	Barton & Loguidice, D.P.C.

Engineering Excellence Committee

Co-Chairs: Jessica Mariani
HVEA Engineers
jmariani@hveapc.com

Luke Martinek
HDR
luke.martinek@hdrinc.com

Members:

Steven Abbattista	OLA Consulting Engineers, PC
Umit Akkaya	TRC Engineers Inc.

Alzamora

Langan Engineering, Environmental, Surveying, Landscape Architecture and Geology, DPC	
Greg Andrus	Lu Engineers
Erich Arcement	Erich Arcement Creative Consulting, Inc.
Christian Arkell	TYLin
Samira Ayati	IVY Engineering Group
Aakash Badjatya	LERA Consulting Structural Engineers
Nicola Belzer	H&H
Gillian Blake	Arup
Donyelle Booker	COWI
Oscar Bustos	STV Incorporated
Rhonda Cardone	Dewberry
Jen Carey	WSP USA Inc.
Gordon Carrie	Arup
Elias Dagher	Dagher Engineering, PLLC
Nick Dandolo	Gannett Fleming TranSystems
Christine Dinisi	HDR
David Dubrow	Jacob, Feinberg, Katz & Michaeli Consulting Group
Lee Ecker	CHA
Ari Eslaminejad	Mueser Rutledge Consulting Engineers PLLC
Cindy Feinberg	Jacob, Feinberg, Katz & Michaeli Consulting Group
Ed Hosek	P.W. Gossler Consulting Engineer & Hydrogeologist, PC
Jean-Pierre Hourani	Brown and Caldwell Associates

Katherine James	Jacobs
David Kaner	TYLin
Vijesh Karatt Vellatt	Stantec Consulting Services Inc.
Asal Khanbilvardi	STV Incorporated
Timothy Krawetz	Syska Hennessy Group, Inc.
Maxinne Leighton	Jaros, Baum & Bolles
Kyle Lopez	Mott MacDonald
Chanel Lubin	AECOM
Shravya Markandeya	CHA
Ana Matos	Munoz Engineering, P.C.
Anthony Osterberg	Naik Consulting Group, P.C.
Kabi Pandey	IMEG
Stamatia Petsios	STV Incorporated
Amir Rizavi	VHB Engineering, Surveying and Landscape Architecture, P.C.
Maurice Roberts	STV Incorporated
Thomas Schoettle	CDM Smith
Kamal Shahid	KS Engineers, P.C.
Diana Soldano	Hayduk Engineering, LLC

Public Relations Committee

Chair: Jill Shorter
 Ryan Biggs | Clark Davis Engineering & Surveying, D.P.C.
 jshorter@ryanbiggs.com

Members:

Judy Beckwith	Lu Engineers
Floortje Beemsterboer	Mott MacDonald
Nicola Belzer	H&H
Paige Biancamano	Jacobs
Ellen Bremseth	Milhouse Engineering and Construction, Inc.
Robin Carathanasis	IMEG
Rhonda Cardone	Dewberry
Daniel Colombini	Goldman Copeland Associates, PC
Elias Dagher	Dagher Engineering, PLLC
Elieen DellaVolle	KS Engineers, P.C.
Christine Dinisi	HDR
Nicole Dzuba	C&S Companies
Michelle Galindez	Syska Hennessy Group, Inc.
Mary Gallagher	CHA
David Gmach	HDR
Frida Gouldstone	CSA Group NY Architects & Engineers, PC
Ozgur Gungor	Arup
Peggy Gust-Anger	Azar Design Co, Architecture, Landscape Architecture, Engineering and Surveying, P.C.
Jessie Henschel	Watts Architecture & Engineering, D.P.C.
Molly Hollister	WSP USA Inc.
Debra Howes	AECOM
Ingrid Kaptein	Ravi Engineering and Land Surveying, P.C.
Helen Kashtan	Pathfinder Engineers & Architects LLP
Danielle LaBare	Ravi Engineering and Land Surveying, P.C.
Jason Markumas	STV Group
Jee Mee Kim	ARCADIS
Lisa Pompei	STV Group
James Powers	H2M architects + engineers
Vanessa Tom	Dattner Architects
Teresa York	JMT of New York, Inc.

Recognition Awards Committee

Chair: Christopher LaTuso
HDR
christopher.latuso@hdrinc.com

Members:

Samira Ayati	IVY Engineering Group
Elena Barnett	HDR
Ross Brady	Arup
Sarah Carroll	Creighton Manning
David Dubrow	Jacobs, Feinberg, Katz & Michaeli Consulting Group
Steve Eget	WSP USA Inc.
Ari Eslaminejad	Mueser Rutledge Consulting Engineers PLLC
Donald Flood	Dewberry
Will Flores	STV Incorporated
Jackie Garcia	MP Engineers and Architects
Reza Ghasemi	Mott MacDonald
Frida Gouldstone	CSA Group NY Architects & Engineers, PC
Maxinne Leighton	Jaros, Baum & Bolles
Cristian Liriano	Liriano & Associates Engineering, Consulting Services PLLC
Aileen Maguire Meyer	C&S Companies
Melissa Motyl	Jacobs
Guinevere Ngau	HDR
Richard Panchyk	H&H
Scott Smith	CHA
Walt Walker	Greeley and Hansen LLC

Scholarship Committee

Chair: Arthur Alzamora
Langan Engineering, Environmental, Surveying, Landscape
Architecture and Geology, DPC
aalzamora@langan.com

Vice-Chair: Christina Minkler
JMT of New York, Inc.
cminkler@jmt.com

Members:

Shil Shah-Gavnoudias	AECOM
Gillian Blake	Arup
Wayne Bonesteel	Azar Design Co, Architecture, Landscape Architecture, Engineering and Surveying, P.C.
Mark Butcher	Popli Design Group
Megan Caceres	Syska Hennessy Group, Inc.
Chris Carter	Stantec Consulting Services Inc.
Christina Chen	Brown and Caldwell Associates
Courtney Clark	Thornton Tomasetti
Nancy Clark	KC Engineering and Land Surveying, P.C.
Alexandra Cook-Chamandy	STV Incorporated
Elias Dagher	Dagher Engineering, PLLC
Michael DesRochers	Loring Consulting Engineers, Inc.
Caitlin DiDonato	Stantec Consulting Services Inc.
Chris Dorman	Michael Baker International, Inc.
Frank Facciolo	Mott MacDonald
Marc Gallagher	Langan Engineering, Environmental, Surveying, Landscape

	Architecture and Geology, DPC
Sarah Galst	Hazen and Sawyer
Miguel Gaspar	Loring Consulting Engineers, Inc.
Oneil Gayle	Loring Consulting Engineers, Inc.
Ben Geho	Haley & Aldrich of New York, LLP
Leyland George	WSP USA Inc.
Dan Gould	HDR
Wayne Hui	Syska Hennessy Group, Inc.
Sal Iodice	WSP USA Inc.
Zahra Khuwaja	Jacobs
Peter Koklano	LiRo-Hill
Christopher LaTuso	HDR
Mary Mazur	H&H
Jason Messenger	Lu Engineers
Dharmil Patel	GZA GeoEnvironmental of New York
Mehal Patel	Jaros, Baum & Bolles
Paul Pizzimenti	Haley & Aldrich of New York, LLP
Steve Rahn	JMT of New York, Inc.
John Reddington	Fisher Associates
Andrew Suozzi	STV Incorporated
Joseph Viola	WSP USA Inc.
Edward Watts, Jr.	Watts Architecture & Engineering, D.P.C.
Peter Young	Hazen and Sawyer

Scholarship Fund (separate 501c3):

Chair:	Peter Young Hazen and Sawyer pyoung@hazenandsawyer.com
Vice-Chair:	Christina Minkler JMT of New York, Inc.
Secretary:	Christopher LaTuso HDR
Treasurer:	John Evers ACEC New York (Non-voting)
Members:	Elias Dagher Dagher Engineering, PLLC Caitlin DiDonato Stantec Consulting Services Inc.

MEMBER SERVICES DIVISION**Robert Cartwright - Executive Committee Liaison**

Budget & Finance Committee

Chair: Robert Cartwright
WSP USA Inc.
Rhcjr1@gmail.com

Members:

Timothy Bolan	Barton & Loguidice, PC
Edward Bosco	ME Engineers
Timothy Cole	Greenman-Pedersen, Inc.
Bill Doughty	Greenman-Pedersen, Inc.
Lee Ecker	CHA
Kenneth Ellsworth	Keystone Associates Architects, Engineers and Surveyors, LLC
David Pollicino	Cameron Engineering
Thomas Schoettle	CDM Smith
Rashid Shariff	KS Engineers, P.C.

Investment Committee:

Chair: David Chambers
Delta Engineers, Architects, Land Surveyors, & Landscape Architects, DPC
dchambers@delta-eas.com

Members:

Nancy Clark	KC Engineering and Land Surveying, P.C.
Daniel Clarke	Wells Fargo Bank, N.A.
Chuck Kohler	STV Incorporated
Brian Miller	LaBella Associates, D.P.C.

Business Practice Committees (2)***1) CFO/Controller Committee***

Co-Chairs: Robert Brewer
Grassi Advisors & Accounting
RBrewer@grassicpas.com

Darren Alfano
Syska Hennessy Group, Inc.
dalfano@syska.com

Members:

Thomas Butcher	STV Incorporated
James Cahill	Watts Architecture & Engineering, D.P.C.
Ted Cordes	CPL
Louis Curatolo	Syska Hennessy Group, Inc.
Scott Dabb	Azar Design Co, Architecture, Landscape Architecture, Engineering and Surveying, P.C.
Patrick DiCerbo	Patrick DiCerbo, Northwestern Mutual
Justin DiLauro	BRAYN Consulting LLC
Daniel DiPace	Creighton Manning Engineering
James Evans	Arup
Dijana Fedyunina	Cerami & Associates, Inc.
Robert Fennessey	HDR
Joseph Ferreira	PKF O'Connor Davies
Ashley Freeman	Popli Design Group
Peter Friebe	IMEG
Maya Gordon	Mott MacDonald

Tom Heim	PS&S
Jolene Jeffe	Nussbaumer & Clarke, Inc.
Steve Kenah	Loring Consulting Engineers, Inc.
Mike Kettell	PKF O'Connors Davies
Paul Levine	LiRo-Hill
Richard Maxwell	Barton & Loguidice, D.P.C.
Jason Meinhart	Fisher Associates, P.E., L.S., L.A., D.P.C.
Brian Murphy	CohnReznick LLP
Doug Nelson	CHA
Kriton Pantelidis	Risk Strategies
Mubbashir Raham	ATANE Design and Construction Consultants
Vishnu Ramlagan	AECOM
Vince Reda	Dewberry
Justin Roj	Popli Design Group
Phillip Ross	Anchin, Block & Anchin LLP
David Thornhill	AKF Group LLC
David Toole	Fisher Associates, P.E., L.S., L.A., D.P.C.
John Tozzi	Creighton Manning Engineering, LLP
Randy Tuthill	C&S Companies
Mary Alice Tyler	PS&S
Joan Verbon	Sam Schwartz Engineering, DPC
Anna Volynsky	H&H
Shekhar Yadavalli	Langan Engineering, Environmental, Surveying, Landscape Architecture and Geology, DPC
Patricia Yelner	P.W. Grosser Consulting Engineering & Hydrogeologists

2) Human Resources Committee

Chair: Ruthanne Bulman
McFarland-Johnson, Inc.
rbulman@mjinc.com

Co-Chair: Anne Davis
H2M Architects, Engineers, Land Surveying and Landscape
Architecture, DPC-H2M architects + engineers
adavis@h2m.com

Members:

Janelle Alberigo	Langan Engineering, Environmental, Surveying, Landscape Architecture and Geology, DPC
Matt Alboum	Dewberry
Aisha Alexander	Loring Consulting Engineers, Inc.
Liza Anzola	LiRo-Hill
Abigail Beckley	McFarland-Johnson, Inc.
Ann Berger	Mott MacDonald
Carol Bermingham	IMEG
Elizabeth Blinn	Delta Engineers, Architects, & Land Surveyors, PC
Heather Blokzyl	Hunt Engineers, Architects, Land Surveyors & Landscape Architect, DPC
Pamela Buckeye	Dagher Engineering, PLLC
Jennifer Carney	GHD Consulting Services, Inc.
Jennifer Chatt	CHA
Mahfuza Chowdhury	AKRF, Inc.
Vanessa Cifuentes	Greenman-Pedersen, Inc.
Nalisa Clark	C&S Companies
Jackie Clune	CPL
Monet Dowrich	CSA Group NY Architects & Engineers, PC
Andrea Drapeau	Barton & Loguidice, D.P.C.
Aneta Dzepina	SUPERSTRUCTURES Engineers + Architects

Susan Essaf	AECOM
Dijana Fedyunina	TCT Cost
Samantha Ferrin	LaBella Associates, D.P.C.
Clodagh Fraccari	Jaros, Baum & Bolles
Vanessa Garbo	Arup
Carina Gelok	WSP USA Inc.
Christy Hardwick	Watts Architects & Engineers, D.P.C.
Vicki Hobson	Syska Hennessy Group, Inc.
Keith Kiss	Stantec Consulting Services Inc.
Karen Lacroix	AKF Group LLC
Stacy Lombardi	PS&S
Aiko Lum	Arup
Kathy Metcalfe	CPL
Terry Montague	HDR
Jessica Nielsen	C&S Companies
Ann Reis	Creighton Manning Engineering, LLP
Sherry Rettew	Fisher Associates, P.E., L.S., L.A., D.P.C.
Rachel Rodriguez	Langan Engineering, Environmental, Surveying, Landscape Architecture and Geology, DPC
Michelle Scatena Bragg	WSP USA Inc.
Christy Stoebe	Azar Design Co, Architecture, Landscape Architecture, Engineering and Surveying, P.C.
Aimee Totaro	Jaros, Baum & Bolles
Liz Uzzo	H2M architects + engineers
Jennifer Vella	Ramboll
Jillian Winters	PW Grosser Consulting engineer & Hydrogeologist, PC
Sandra Wissemann	C&S Companies
Srinivas Yenamandra	Mueser Rutledge Consulting Engineers

DMWBE Committee

Co-Chair:

Jermaine Huell
WSP USA Inc.
jermaine.huell@wsp.com

Co-Chair:

Aine O'Dwyer
Enovate
aodwyer@enovateengineering.com

Members:

Carla Artis	Stantec Consulting Services Inc.
Samira Ayati	IVY Engineering Group PLLC
Donyelle Booker	COWI
Oscar Bustos	STV Incorporated
Emily Clough	Brown and Caldwell Associates
Jamie Davis	Ryan Biggs Clark Davis Engineering & Surveying, D.P.C.
John Davis	Wendel WD Architecture, Engineering, Surveying and Landscape Architecture, P.C.
J. Evans Doleyres	JED Engineering, P.C.
Cindy Feinberg	Jacob, Feinberg, Katz & Michaeli Consulting Group
Oneil Gayle	Loring Consulting Engineers, Inc.
Alexandra Gore	WSP USA Inc.
Julie Harris	Lu Engineers
Andrew Hollweck	Milhouse Engineering and Construction, Inc.
Cristian Liriano	Liriano & Associates Engineering, Consulting Services PLLC
Radhi Majmudar	Innovative Structural and Specialty Engineering
Mina Malek	PROMINA Engineering PC
Kai Marion	C&S Companies
Kendra McQuilton	Energia USA, Inc.

Sherazad Mehta	Arup
Sanjay Naik	Naik Consulting Group, P.C.
Nagappa Ravindra	Ravi Engineering and Land Surveying, P.C.
Kimberley Scott	Jacobs
Kamal Shahid	KS Engineers, P.C.
Doreen Taveras	AECOM
Barbara Thayer	PS&S
Michael Tolliver	KS Engineers, P.C.
Ed Watts, Jr.	Watts Architecture & Engineering, D.P.C.
Connie Lamos (Emerging Leader Rep)	Infrastructure Engineering, Inc., P.C.

Workforce Development Committee

Chair:

Arthur Alzamora
 Langan Engineering, Environmental, Surveying, Landscape
 Architecture and Geology, DPC
 aalzamora@langan.com

Members:

Ann Berger	Mott MacDonald
Shahien Shirazi Catanio	AECOM
Ray Daddazio	Thornton Tomasetti
Michael DeGaspari	VHB Engineering, Surveying and Landscape Architecture, P.C.
Caitlin DiDonato	Stantec Consulting Services Inc.
Alex Gore	WSP USA
Darryl Johnson	Michael Baker International, Inc.
Jelyssa Little	Jacobs
Craig Ruyle	LiRo-Hill
Natalie Wagner	Fisher Associates, P.E., L.S., L.A., D.P.C.

GOVERNMENT AFFAIRS I – TRANSPORTATION 1 DIVISION**Oneil Gayle - Executive Committee Liaison**

NYC Department of Transportation Committee (NYCDOT)

Chair: Peter Bakarich
COWI
pebh@cowi.com

Members: Ayman Baki Tectonic Engineering Consultants, Geologists & Land
Surveyors, D.P.C.
Sam Barkho STV Incorporated
Rachel Beer TYLin
Haluk Cakir Infrastructure Engineering, Inc., P.C.
Joseph Catapano LiRo-Hill
Daren Dong IH Engineers, P.C.
Hilary Frost HNTB New York Engineering and Architecture, P.C.
Jason Stern Greenman-Pedersen, Inc.
Jorge Patino-Velasquez (Emerging Leader Rep) JMT of New York, Inc.

NYC Economic Development Corporation Committee

Chair: David Quart
VHB Engineering, Surveying and Landscape Architecture, P.C.
dquartz@vhb.com

Members: Haluk Cakir Infrastructure Engineering, Inc., P.C.
Brian Craine Matrix New Word Engineering, Land Surveying and Landscape
Architecture, PC
Roni Deitz ARCADIS
Athena DeNivo Haley & Aldrich of New York, LLP
Lian Farhi TYLin
Peter Koklanos LiRo-Hill
Gary Rozmus GEI Consultants, Inc., P.C.
Alok Saha Naik Consulting Group, P.C.
Ryan White Jacobs
Alan Zhao Dewberry

Metropolitan Transportation Authority Committees

Chair, & MTA Rail lead: Joe Pizzuro
VHB Engineering, Surveying and Landscape Architecture, P.C.
jpizzurro@vhb.com

Vice-Chair, B&T lead: Kevin Hussain AI Engineers, Inc, P.C.
Vice-Chair, Transit lead: Sharon Berger Gannett Fleming TranSystems

MTA Bridges & Tunnels Sub-Committee

Members: Kevin Hussain (lead) AI Engineers, Inc, P.C.
John Deerkoski Thornton Tomasetti
Keith Eichner H&H
Amr Hafez KC Engineering and Land Surveying, P.C.
Qi Ye CHI Consulting Engineers, LLC
Greg Zenk Greenman-Pedersen, Inc.
Michael DeGaspari (Emerging Leader Rep) VHB Engineering, Surveying and Landscape
Architecture, P.C.

MTA Rail (MNR, LIRR) Sub-Committee

Members: Joe Pizzuro (lead) VHB Engineering, Surveying and Landscape Architecture, P.C.
Eugene Chuang Garg Consulting Services, Inc.
Kurt Goddard AtkinsRealis
Jesse Heimowitz Tectonic Engineering Consultants, Geologists & Land
Surveyors, D.P.C.
John Kennard HNTB New York Engineering and Architecture, P.C.
Jesus Ramirez Jacobs
Kamal Shahid KS Engineers, P.C.
Ekaterina McConville (Emerging Leader Rep) Mott MacDonald

MTA NYC Transit Sub-Committee

Members: Sharon Berger (lead) Gannett Fleming TranSystems
Elena Barnett HDR
Helga Junold ARCADIS
Gill Mosseri LiRo-Hill
Anil Parikh AECOM
Ray Pinto Parsons
Andrew Schueller Malick & Scherer, P.C.
Phil Yartey TYLin
Zane Amray (Emerging Leader Rep) ZOFS Engineering, P.C.

NYS Thruway Authority Committee

Chair: Todd Gadd
Colliers Engineering & Design
tgadd@bergmannpc.com

Committee: Craig Cornwell Greenman-Pedersen, Inc.
Barry Dumbauld Hunt Engineers, Architects, Land Surveyors & Landscape
Architect, DPC (formerly Shumaker)
John Grady Ravi Engineering and Land Surveying, P.C.
Rob Horr AtkinsRealis
Seth Kaeuper C&S Companies
Roger Laime AECOM
Daniel Levine Parsons
Brian Miller LaBella Associates, D.P.C.
Matthew Schooley Barton & Loguidice, D.P.C.

Port Authority of New York & New Jersey Committee (PANY&NJ)

(joint committee of ACEC New York and New Jersey)

New York Chair: David Weiss (New York lead)
WSP USA Inc.
David.weiss@wsp.com

NY Committee: Samira Ayati (Emerging Leader Rep) IVY Engineering Group PLLC
Robert Baptiste Baptiste Engineering
Bruce Lilker IMEG
Cristian Liriano Liriano & Associates Engineering, Consulting Services PLLC
Andrew Malek PS&S
Angel Martinez STV Incorporated
Warren Michelsen Enovate
Linda Reardon NV5

This committee is a joint committee with ACEC New Jersey.

NYS Bridge Authority Committee

Chair: Quentin Johnson
Modjeski & Masters
qpjohnson@modjeski.com

Members:

Wayner Bonesteel	Azar Design Co, Architecture, Landscape Architecture, Engineering and Surveying, P.C.
John Paul Cunningham	HDR
Matt Colon	Mott MacDonald
Steve Gauthier	LaBella Associates, D.P.C.
Ryan Henderson	JMT of New York, Inc.
Erik LeClaire	CDM Smith

Gateway Development Committee

Chair: Michael Shamma
Sam Schwartz Engineering, DPC
Michael.shamma@samschwartz.com

Members:

Elena Barnett	HDR
Richard Cavallaro	LiRo-Hill
Craig Covil	SI Engineering, P.C.
Mac Gallagher	Langan Engineering, Environmental, Surveying, Landscape Architecture and Geology, DPC

ACEC New Jersey Members:

John Mason	Jacobs
Michael Morgan	Gannett Fleming TranSystems
Tom Napolitano	Greenman-Pedersen, Inc.
Kamal Shahid	KS Engineers, P.C.

GOVERNMENT AFFAIRS II – TRANSPORTATION 2 DIVISION

Matthew Schooley - Executive Committee Liaison

NYS Aviation Committee

Chair: Richard Horstmann
Azar Design Co, Architecture, Landscape Architecture, Engineering
and Surveying, P.C.
rhorstmann@foit-albert.com

Members:

Mohammad Ali	Jaros, Baum & Bolles
Andrew Cheng	VHB Engineering, Surveying and Landscape Architecture, P.C.
David Dubrow	Jacob, Feinberg, Katz & Michaeli Consulting Group
Pat Hludzinski	C&S Companies
Myesha McClendon	Milhouse Engineering and Construction, Inc.
Cassandra Wetzel	GZA GeoEnvironmental of New York
Suriel Zayas	Techno Consult Inc.
Rick Zottola	LERA Consulting Structural Engineers

NYS County Highway Superintendents Committee

Chair: Emily Smith
Fisher Associates, P.E., L.S., L.A., D.P.C.
Esmith@fisherassoc.com

Members:

Gerad Bartucci	McLaren Engineering Group
Shelly Johnston	Creighton Manning Engineering, LLP
Frank Mento	C&S Companies
Laura Sanda	McFarland-Johnson, Inc.
Christopher Sichak	Erdman Anthony
Dave Taillon	LaBella Associates, D.P.C.
Brian Tremblay	Barton & Loguidice, D.P.C.
Brian Tyler	Delta Engineers, Architects, Land Surveyors, & Landscape Architects, DPC

NYS Parks & Recreation Committee

Chair: Mike Morgante
WSP USA
Mike.Morgante@wsp.com

Members:

Schillivia Baptiste	Laland Baptiste
Sam Bennett	CHA
Michael Hults	IMEG, an IMEG company
Patrick McAffrey	Dattner Architects
Sherazad Mehta	Arup

Federal Highway Administration (FHWA)

Chair: Dave Rettig
TYLin
david.rettig@tylin.com

Members:

Gabe Cimini	Stantec Consulting Services Inc.
Robert Gallup	Dewberry
Dan Hitt	Jacobs

Joseph Rigny
Scott Walker

Delve Underground Engineering, PLLC
Urban Engineers of New York, D.P.C.

NYS Canals Committee

Chair: Luke Morenus
CHA
lmorenus@chasolutions.com

Members: Nathan Buczek TYLin
Steve Dombrowski WSP USA Inc.
Shelly Johnston Creighton Manning Engineering, LLP
Zach Monge Jacobs
Glenford Mullings Lu Engineers
Bill Sprengnether Fisher Associates, P.E., L.S., L.A., D.P.C.

NYS Department of Transportation Committee (NYSDOT)

Chair: Bill McCormick
Erdman Anthony
mccormickwp@erdmananthony.com

Members: Wahid Albert AECOM
Stelios Bertos Stantec Consulting Services Inc.
Eric Celia HNTB New York Engineering and Architecture, P.C.
Michael Croce Colliers Engineering & Design
Jim DeKoning L.K. McLean Associates, P.C.
David DeLuca H&H
Lee Ecker CHA
Scott Geiger WSP USA Inc.
Christina Minkler JMT of New York, Inc.
Karim Palomino EnTech Engineering, P.C.
Yusuf Poonawala M & J Engineering, P. C.
Marty Smith Modjeski & Masters P.C.
James Tantella Mueser Rutledge
Sarah Carroll (Emerging Leader Rep) Creighton Manning Engineering, LLP

Railroads Committee

Chair: TBD

Members: Diaa Elmaddah Jacobs
Chris Heald WSP USA Inc.
Janice Li ARCADIS
John Murray Mott MacDonald
Chris Papazoglou VHB Engineering, Surveying and Landscape Architecture, P.C.
Jerry Sentz Azar Design Co, Architecture, Landscape Architecture, Engineering
and Surveying, P.C.

GOVERNMENT AFFAIRS III – VERTICAL 3 DIVISION**Chris Bond - Executive Committee Liaison**

Dormitory Authority of the State of New York Committee (DASNY)

Chair: Anthony Alduino
Dewberry
aalduino@dewberry.com

Members:

Aakash Badjatya	LERA Consulting Structural Engineers
Timothy Conlon	PS&S
Cindy Feinberg	Jacob, Feinberg, Katz & Michaeli Consulting Group
Rob Kovacs	GHD Consulting Services, Inc.
Richard Meilan	MG Engineering D.P.C.
Damian Payne	Loring Consulting Engineers, Inc.
Tim Treharne	Arup
Joshua Zweback	Cosentini Associates – a Tetra Tech Company

New York City Department of Design & Construction Committee (NYCDDC)

Chair: Wendy Ho
AKRF, Inc.
who@akrf.com

Vice-Chair: Oneil Gayle
Loring Consulting Engineers, Inc.
ogayle@loringengineers.com

DDC Infrastructure Subcommittee

Wendy Ho (lead)	AKRF, Inc.
Mellanie Bennett-Monclova	Mott MacDonald
Magdy Elkafafi	TRC
Jacob Fradkin	MFS Engineers & Surveyors
Mindy Horowitz	Matrix New Word Engineering, Land Surveying and Landscape Architecture, PC
Sarwat Izhar	SI Engineering
Adam Kwartowitz	WSP USA Inc.
James Quinn	Thornton Tomasetti
Matt Nayer (Emerging Leader Rep)	NV5

DDC Buildings Subcommittee

Oneil Gayle (lead)	Loring Consulting Engineers, Inc.
Fernanda Freitas	Arup
James Harley	Langan Engineering, Environmental, Surveying, Landscape Architecture and Geology, DPC
Chris McDermott	AECOM
Richard Meilan	MG Engineering D.P.C.
Joseph Munafo	Dagher Engineering, PLLC
Joshua Zweback	Cosentini Associates – a Tetra Tech Company

NYC Housing Authority Committee

Chair: Jeff Terzakis
JMT of New York, Inc.
jterzakis@jmt.com

Members:	Mark Drozdov	Lozier, Inc.
	Andrew Hollweck	Milhouse Engineering and Construction, Inc.
	Wayne Hui	Syska Hennessy Group, Inc.
	Muhammad Izhar	SI Engineering, P.C.
	David Leun	CDM Smith
	JJ Suarez	CSA Group NY Architects & Engineers, PC
	Vincent Zito	STV Incorporated
	Joshua Zwebach	Cosentini Associates – a Tetra Tech Company

NYC School Construction Authority Committee (NYC SCA)

Chair: Chas Johnson
Loring Consulting Engineers, Inc.
CJohnson@loringengineers.com

Members:	Elan Abneri	Gannett Fleming TranSystems
	Muhammad Amray	ZOFS Engineering, P.C.
	Paul Boyce	PW Grosser Consulting Engineer & Hydrogeologist, PC
	Muhammad Izhar	SI Engineering, P.C.
	Tricia Quan-Kep	Naik Consulting Group, P.C.
	Francisco Ruela	InfoTran Engineers & Architects P.C.
	Samuel Singer	Langan Engineering, Environmental, Surveying, Landscape Architecture and Geology, DPC
	George Toma	BRAVO Group
	Chris Zanoni	LiRo-Hill
	Dan Maher (Emerging Leader Rep)	PS&S

NYS Office of General Services Committee (NYS OGS)

Chair: Otto Schwarz
Ryan Biggs | Clark Davis Engineering & Surveying, D.P.C.
Oschwarz@ryanbiggs.com

Members:	Yetunde Adelekan	HDR
	Samira Ayati	IVY Engineering Group PLLC
	Mike Bogardus	Fisher Associates, P.E., L.S., L.A., D.P.C.
	Steve DiFlora	MG Engineering D.P.C.
	Chris Kopec	McFarland-Johnson, Inc.
	Doug Obrist	C&S Companies
	Josh Repp	Colliers Engineering & Design
	Jeff Stafford	Hunt Engineers, Architects, Land Surveyors & Landscape Architect, DPC Engineering
	Alex Strassenburgh	IMEG
	Andrew Chase (Emerging Leader Rep)	LiRo-Hill

State University Construction Fund Committee (SUCF)

Chair: Robert Accosta
Arup
Robert.Accosta@arup.com

Members:	Dirk Anderson	Lizardos Engineering Associates, D.P.C.
	Jan Brath	Fisher Associates, P.E., L.S., L.A., D.P.C.
	Jamie Davis	Ryan Biggs Clark Davis Engineering & Surveying, D.P.C.
	Steve DiFlora	MG Engineering D.P.C.
	Alex Engelman	Syska Hennessy Group, Inc.
	Matt Meyer	Pathfinder Engineers & Architects LLP

GOVERNMENT AFFAIRS IV – ENVIRONMENTAL/ENERGY 4 DIVISION

Peter Gerbasi - Executive Committee Liaison

US Army Corps of Engineers Committee

Chair: Lisa Dolphin
Colliers Engineering & Design
lisa.dolphin@collierseng.com

Committee:

Jennifer Brunton	WSP USA
Devin DeMarco	First Environment, Inc.
Johanna Duffy	Barton & Loguidice, D.P.C.
Matt Masters	AECOM
Greg Sprich	Stantec Consulting Services Inc.
Tim Treharne	Arup

NYC Department of Environmental Protection Committee

Chair: Sarah Cwikla
Stantec Consulting Services Inc.
sarah.cwikla@stantec.com

Committee:

Katie Hoek	Hazen and Sawyer
Darryl Johnson	Michael Baker International, Inc.
Andrew Klimek	Watts Architecture & Engineering, D.P.C.
Dave Leun	CDM Smith
Vatche Minassian	HDR
Patrick Parault	AKRF, Inc.
Lina Posso	Carollo Engineers, P.C
James Roberts	H2M architects + engineers
Vincent Rubino	Wade Trim NY, PC
Bade Sozer	Delve Underground Engineering, PLLC
Julianna Seddio (Emerging Leader Rep)	CSA Group

NYS Department of Environmental Conservation Committee

Chair: Mike Musso
HDR
Michael.Musso@hdrinc.com

Members:

Kris Almskog	PW Grosser Consulting Engineer & Hydrogeologist, PC
Bryan Bayer	C&S Companies
Suzanne Bell	Haley & Aldrich of New York, LLP
Chris Campbell	Hazen and Sawyer
Dan Hitt	Jacobs
Jean Huang	Dewberry
Jimmy Ireland	Fisher Associates, P.E., L.S., L.A., D.P.C.
Jerry Kleyman	ARCADIS
Joshua Schmidt (Emerging Leader Rep)	Fisher Associates, P.E., L.S., L.A., D.P.C.

NYS Environmental Facilities Corporation Committee

Chair: Michael Miller
CHA
mmiller@chasolutions.com

Members: Christi Hook Hazen and Sawyer

Robert Klavoon	Wendel WD Architecture, Engineering, Surveying and Landscape Architecture, P.C.
Zach Monge	Jacobs
Eric Pond	Barton & Loguidice, D.P.C.
William Schneider	PS&S
Dylan Thisse	Wright Pierce

Energy Committee

Chair: David Pollicino
IMEG, an IMEG company
dpollicino@cameronengineering.com

Members:

Greg Bloom	Brown and Caldwell Associates
Erik Dee-Olsen	P.W. Grosser Consulting Engineer & Hydrogeologist, PC
Greg Delmastro	Langan Engineering, Environmental, Surveying, Landscape Architecture and Geology, DPC
Santiago Cabo Freixedas	IMEG
Ernie Iannucci	H2M architects + engineers
Iljong Kim	CSA Group NY Architects & Engineers, PC
Carl Mister	Arup
KC Sahl	VHB Engineering, Surveying and Landscape Architecture, P.C.
David Straw	JMT of New York, Inc.
Jim Wenck	GHD Consulting Services, Inc.
Steven Gerazounis (Emerging Leader Rep)	MG Engineering D.P.C.

New York Power Authority Committee (NYPA)

Chair: TBD

Members:

Elias Dagher	Dagher Engineering, PLLC
Greg DelMastro	Langan Engineering, Environmental, Surveying, Landscape Architecture and Geology, DPC
Joe Engels	GEI Consultants, Inc., P.C.
Benjamin Houston	Groundpoint Engineering, PLLC
Nabeel Mishalani	CDM Smith
Emma O'Brien	Arup
Robert Quiggle	HDR

If you have any changes or corrections to this list, please email Tina Deale at tina@acecny.org.