

## **State Committees**

**August 1, 2019 – July 31, 2020**

*Committees are the backbone of ACEC New York, through which much of the work of the organization gets done—work that affects all aspects of the engineering profession, from legislative advocacy to environmental issues.*

*Committees offer more than a significant opportunity to impact the professional environment:*

- *Committee work is often highly educational and interactive.*
- *Members share information that can improve their business practices and help make their firms more profitable and successful, and their efforts support the industry as a whole.*
- *Committee involvement is a great way to build connections with people throughout the organization and the entire industry.*

*As you can see on the following pages, there is an ACEC New York committee for virtually every interest, and each one is important. If you are interested in serving on a committee, please sign up through your firm when participation forms are issued to the main contact at each member firm in the Spring.*

---

## Table of Contents

---

ACEC New York Organizational Chart.....	4
<b>Legislative Affairs Division/Raymond Daddazio, Executive Committee Liaison</b>	
<a href="#">Emerging Leaders Committee</a> .....	5
<a href="#">Legislative Committee</a> .....	5
1) <i>Federal Committee/ACECPAC</i> .....	7
<a href="#">Membership Committee</a> .....	7
<a href="#">Nominating Committee</a> .....	8
<b>Professional &amp; Industry Division/Richard McFadden, Executive Committee Liaison</b>	
<a href="#">Continuing Education Committee</a> .....	9
<a href="#">Council of Chairs Committee</a> .....	9
<a href="#">Design-Build Committee</a> .....	10
<a href="#">Legal Counsels Forum</a> .....	11
<a href="#">Technology Committee</a> .....	12
<b>Communications Division/David Taillon, Executive Committee Liaison</b>	
<a href="#">Constitution Committee</a> .....	13
<a href="#">Engineering Excellence Committee</a> .....	13
<a href="#">Program Committee</a> .....	14
<a href="#">Public Relations Committee</a> .....	14
<a href="#">Recognition Awards Committee</a> .....	15
<a href="#">Scholarship Committee</a> .....	15
<b>Member Services Division/Gregory Cummings, Executive Committee Liaison</b>	
<a href="#">Budget &amp; Finance Committee</a> .....	17
1) Investment.....	17
Business Practice Committees:	
1) <a href="#">CFO/Controller Committee</a> .....	17
2) <a href="#">Human Resources Committee</a> .....	18
<a href="#">DMWBE Committee</a> .....	19
<b>Government Affairs I – Transportation 1 Division</b>	
<b>Deborah Chase, Executive Committee Liaison</b>	
<a href="#">NYC Department of Transportation Committee</a> .....	20
<a href="#">NYC Economic Development Corporation Committee</a> .....	20
<a href="#">Metropolitan Transportation Authority Committees</a> .....	20
1) <a href="#">Bridges &amp; Tunnels</a> Sub-committee.....	21
2) Rail ( <a href="#">MNR</a> , <a href="#">LIRR</a> ) Sub-committee.....	21
3) <a href="#">NYC Transit</a> Sub-committee.....	21
<a href="#">NYS Thruway Authority Committee</a> .....	21
<a href="#">Port Authority of New York &amp; New Jersey Committee</a> .....	22
<a href="#">NYS Bridge Authority Committee</a> .....	22

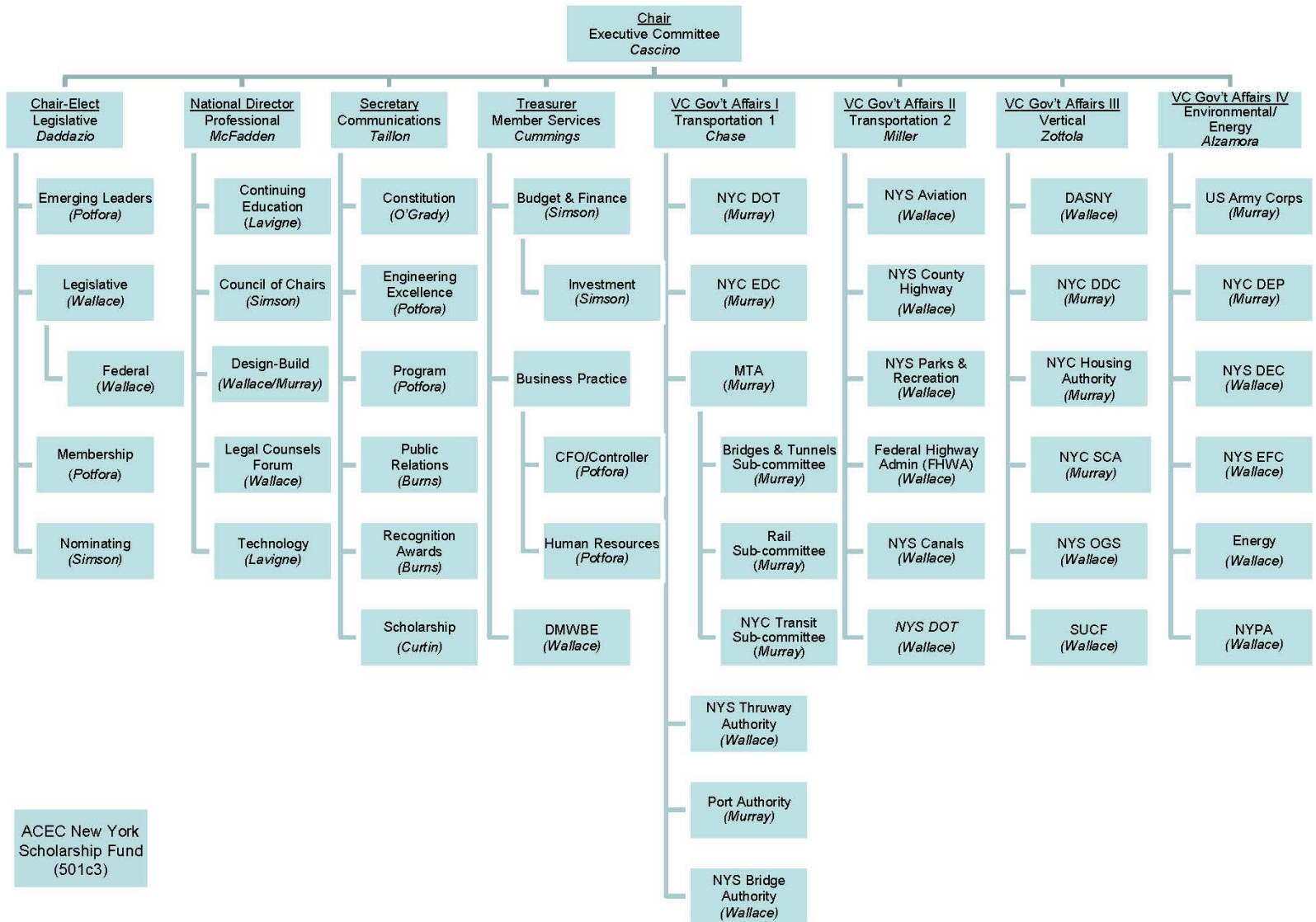
---

## Table Contents

---

Government Affairs II – Transportation 2 Division	
Brian Miller, Executive Committee Liaison	
NYS Aviation Committee.....	23
<a href="#">NYS County Highway Superintendents</a> Committee.....	23
<a href="#">NYS Parks &amp; Recreation</a> Committee.....	23
<a href="#">Federal Highway Administration</a> (FHWA).....	24
<a href="#">NYS Canal Corps</a> Committee.....	24
<a href="#">NYS Department of Transportation</a> Committee.....	24
<b>Government Affairs III – Vertical Division</b>	
<b>Rick Zottola, Executive Committee Liaison</b>	
<a href="#">Dormitory Authority of the State of New York</a> Committee.....	25
<a href="#">NYC Department of Design &amp; Construction</a> Committee.....	25
<a href="#">NYC Housing Authority</a> Committee.....	25
<a href="#">NYC School Construction Authority</a> Committee.....	26
<a href="#">NYS Office of General Services</a> Committee.....	26
<a href="#">State University Construction Fund</a> Committee.....	26
<b>Government Affairs IV – Environmental/Energy Division</b>	
<b>Arthur Alzamora, Executive Committee Liaison</b>	
<a href="#">US Army Corps of Engineers</a> Committee.....	27
<a href="#">NYC Department of Environmental Protection</a> Committee.....	27
<a href="#">NYS Department of Environmental Conservation</a> Committee.....	27
<a href="#">NYS Environmental Facilities Corporation</a> Committee.....	28
Energy Committee.....	28
<a href="#">New York Power Authority</a> Committee.....	28
Scholarship Fund Committee (separate 501c3).....	29

# ACEC New York 2019-2020 Committee Organizational Chart



---

**LEGISLATIVE AFFAIRS DIVISION**  
**Raymond Daddazio - Executive Committee Liaison**

---

***Emerging Leaders Committee***

**Chair:** Christopher LaTuso  
HDR  
500 Seventh Avenue, 15th Floor  
New York, NY 10018  
212-542-6000  
christopher.latuso@hdrinc.com

**Vice-Chair:** Alexandra Gore  
WSP USA  
One Penn Plaza  
New York, NY 10119  
212-631-3761  
Alexandra.Gore@wsp.com

**Members:**

Donyelle Booker	COWI
Oscar Bustos	Urban Engineers of New York, D.P.C.
Cindy Feinberg	Jacob, Feinberg, Katz, & Michaeli Consulting Group
Jacob Fradkin	MFS Consulting Engineers & Surveyors, DPC
Jared Green	Langan Engineering, Environmental, Surveying, Landscape Architecture and Geology, DPC
Chuck Harper	Langan Engineering, Environmental, Surveying, Landscape Architecture and Geology, DPC
Rob Ioanna	Syska Hennessy Group, Inc.
David Jones	COWI
Thomas Kelleher	LERA Consulting Structural Engineers
Ryan Manderbach	Langan Engineering, Environmental, Surveying, Landscape Architecture and Geology, DPC
Martin Meriwether	P.W. Grosser Consulting Engineer & Hydrogeologist, PC
Christina Minkler	JMT of New York, Inc.
Peter Moore	MFS Consulting Engineers & Surveyors, DPC
Chris Pollock	Arup
Michael Putnam	Lilker Associates Consulting Engineers, P.C.
Parshva Shah	AKRF, Inc.
Brendan Smith	WSP USA
Israe Zizaoui	HDR

***Legislative Committee***

**Chair:** Daniel Duprey  
CPL  
205 St. Paul Street, Suite 500  
Rochester, NY 14604  
585-454-7600  
dduprey@cplteam.com

**Members:**

Joseph R. Amato	Cameron Engineering & Associates, LLP
Richard Amodei	STV Group
Nick Anastasi	P.W. Grosser Consulting Engineer & Hydrogeologist, PC
B. Dean Angelakos	CHA
Victoria Arbitrio	Gilsanz Murray Steficek, LLP
Jeanette Baiardi	AKF Group LLC
James Baker	Foundation Design PC
Robert A. Banner	Ingram Yuzek Gainen Carroll + Bertolotti LLP

Rena Barta	Dewberry
John F. Brusa Jr.	Barton & Loguidice, D.P.C.
Kumar Buvanendaran	PRIME AE Group
Serge Budzyn	Lilker Associates Consulting Engineers, P.C.
Robert Cartwright	Stantec Consulting Services Inc.
Vincent Cassano	Jacobs
Gerry Cavaluzzi	Kennedy/Jenks Consultants and KJ Engineers and Geologists of New York PC
Joseph Celentano	Land Design Associates-Engineering, Surveying & Landscape Architecture, DPC
Ali Chaudhry	AECOM
Phil Collin	HNTB New York Engineering and Architecture, P.C.
James Crandall	Gannett Fleming Engineers, P.C.
Tom Curran	Stantec Consulting Services Inc.
Raymond Daddazio	Thornton Tomasetti
John Deerkoski	AECOM
Frank DeSignore	CHA
Francois Fayad	Hinman Consulting Engineers
Cindy Feinberg	JFK&M
Donald Fletcher	Barton & Loguidice, D.P.C.
Matthew Millea	C&S Companies
Brett Gough	Ames & Gough, Inc.
Charles Gozdziwski	Hardesty & Hanover, LLC
Ariganjan (Gary) Guleria	A.G. Consulting Engineering, PC
Douglas R. Halstrom	L'Abbate, Balkan, Colavita & Contini, L.L.P.
Richard Horstmann	KS Engineers, P.C.
Greg Hutter	Popli Design Group
Robert Hutteman	Lu Engineers
Priya Jain	Atkins
Jerry Jannetti	WSP USA
Cawsie Jijina	Severud Associates Consulting Engineers P.C.
Walter Kaeck	Mueser Rutledge Consulting Engineers
Bernie Kalus	WSP USA
Charles King	Urban Engineers of New York, D.P.C.
James Laurita	Gannett Fleming Engineers and Architects, P.C.
Maria Lehman	Parsons Corporation
Gary Loesch	H2M Architects, Engineers, Land Surveying and Landscape Architecture, DPC dba H2M architects + engineers
Jeffrey C. Lookup	Morrissey Goodale
Orrin B. MacMurray	C&S Companies
Barry Marin	Friedman LLP
Michael Marino	Nussbaumer & Clarke, Inc.
Mark McAnany	BERGMANN
William McCormick	Erdman Anthony
James McDuffee	Delta Engineers, Architects, & Land Surveyors, PC
Thomas McLaughlin	HDR
Brian Miller	LaBella Associates, D.P.C.
Paul Millman	SUPERSTRUCTURES Engineering + Architecture, PLLC
Mia Nadasky	HVEA Engineers,
Sanjay Naik	Naik Consulting Group, P.C.
Andrew Narus	Cameron Engineering & Associates, LLP
Nigel Nicholls	Arup
Karim Palomino	PRIME AE Group of NY
Richard Peters	Hazen and Sawyer
Rick Pettis	Watts Architecture and Engineering, D.P.C.
Tricia QuanKep	T.Y. Lin International Engineering & Architecture, P.C.
Milo Rivero	STV Group

John Robson	Foit-Albert Associates, Architecture, Engineering and Surveying, P.C.
Lee Sackett	L'Abbate, Balkan, Colavita & Contini, L.L.P.
Andy Sandor	Atkins
Roseann Schmid	Fisher Associates, P.E., L.S., L.A., D.P.C.
Thomas Schoettle	CDM Smith
Samuel Schwartz	Sam Schwartz Engineering, DPC
Martin Schwartzberg	Marshall Dennehey Warner Coleman & Goggin, P.C.
Jerry Sentz	Foit-Albert Associates, Architecture, Engineering and Surveying, P.C.
Linda Shumaker	Shumaker Consulting Engineers & Land Surveyors, D.P.C.
Julie Stein	HDR
John Trimble	C&S Companies
Mark Tytka	WSP USA
Genaro Velez	COWI
Richard Venvertloh	LaBella Associates, D.P.C.
Brian White	OBG

***Federal Sub-Committee/ACEC PAC***

**Chair:** Lee Ecker  
CHA  
PO Box 5269 III Winners Circle  
Albany NY 12205  
518-453-4500  
lecker@chacompanies.com

<b>Member:</b>	Vicki Arbitrio	Gilsanz Murray Steficek LLP
	Geoffrey Baldwin	CDM Smith
	Christopher Bond	Hunt Engineers, Architects & Land Surveyors, P.C.
	Ray Daddazio	Thornton Tomasetti
	Jamie Davis	Ryan-Biggs Clark Davis Engineering & Surveying
	Francois Fayad	Hinman Consulting Engineering
	Cindy Feinberg	JFK&M
	Charles Gozdziwski	Hardesty & Hanover, LLC
	Keith Harlock	WSP USA
	Jim Hirani	Hirani Engineering & Land Surveying, P.C.
	Jeffrey Lookup	Morrissey Goodale
	Christopher McDermott	AECOM
	Thomas McLaughlin	HDR
	Brian Miller	LaBella Associates, P.C.
	Karl Rohde	Nussbaumer & Clarke, Inc.
	Lorenzo Rotoli	LaBella Associates, D.P.C.

***Membership Committee***

**Chair:** Ray Daddazio  
Thornton Tomasetti  
51 Madison Avenue  
New York, NY 10010  
212-367-3094  
rdaddazio@thorntontomasetti.com

<b>Members:</b>	Paul Boyce	P.W. Grosser Consulting Engineer & Hydrogeologist, PC
	Ammon Bush	Shumaker Consulting Engineering & Land Surveying, D.P.C.
	Thomas Cascino	AECOM
	Phillip Galbo	Watts Architecture & Engineering, D.P.C.

Keith Harlock	WSP USA
Cyrus Izzo	Syska Hennessy Group, Inc.
Patrick Nicoletta	MRB Group Engineering, Architecture, and Surveying
Karl Rohde	Nussbaumer & Clarke, Inc.
Lyle Shute	McGoey, Hauser & Edsall Consulting Engineers, D.P.C.
Mitchel Simpler	Jaros, Baum & Bolles
Kyle Snyder	Lochner Engineering, P.C.
David Taillon	CHA

***Nominating Committee***

**Chair:**

Richard McFadden  
Jaros, Baum & Bolles  
80 Pine Street  
New York, NY 10005  
212-530-9353  
mcfaddenr@jbb.com

**Members:**

Charles Gozdziwski	Hardesty & Hanover, LLC
Mark McAnany	BERGMANN
Thomas McLaughlin	HDR



---

**PROFESSIONAL & INDUSTRY DIVISION**  
**Richard McFadden - Executive Committee Liaison**

---

***Continuing Education Committee***

**Acting Chair:** Mary-Beth Rumble  
Poole Professional-New York  
1160F Pittsford-Victor Road  
Pittsford, NY 14535  
585-385-0428  
mrumble@poole-ny.com

**Members:**

Eric Alderson	Promark Associated Agencies, Inc.
Francois Fayad	Hinman Consulting Engineers
Leo Fernandez	Thornton Tomasetti
Michael Hollowood	CHA
Michelle Kohn	Arup
Charles Longworth	Greenman-Pedersen, Inc.
Maki Onodera	Jacobs
Paul Paparella	Mott MacDonald
Paul Rouis	Ryan Biggs   Clark Davis Engineering & Surveying, D.P.C.
Konstantinos Syngros	Langan Engineering, Environmental, Surveying, Landscape Architecture and Geology, DPC
Robert Trovato	Lilker Associates Consulting Engineers, P.C.
Joe Viola	WSP USA

***Council of Chairs Committee***

**Chair:** Richard McFadden  
Jaros, Baum & Bolles  
80 Pine Street  
New York, NY 10005  
212-530-9353  
mcfaddenr@jbb.com

**Members:**

Joseph Amato	Cameron Engineering & Associates, LLP
Andrew Ciancia	Langan Engineering, Environmental, Surveying, Landscape Architecture and Geology, DPC
Katherine Dewkett	Dewberry
Charles Gozdziwski	Hardesty & Hanover, LLC
Gregory Kelly	WSP USA
Michael Leydecker	Wendel WD Architecture, Engineering, Surveying and Landscape Architecture, P.C.
Gary Loesch	H2M architects + engineers
Orrin MacMurray	C&S Companies
Thomas McLaughlin	HDR
Robert Radley	T.Y. Lin International Engineering and Architecture, P.C.
Mitchel Simpler	Jaros, Baum & Bolles
Linda Shumaker	Shumaker Consulting Engineering & Land Surveying, D.P.C.

***Design-Build Committee***

**Chair:** Milo Rivero  
STV Group  
225 Park Avenue South  
New York, NY 10003-1604  
646-602-5849  
milo.rivero@stvinc.com

<b>Members:</b>	Sam Anthony	Erdman Anthony
	Frances J. Arland	Mueser Rutledge Consulting Engineers
	Scott Armstrong	Parsons Corporation
	Todd Bergstrom	PRIME AE Group of NY
	Michael Bertollo	Jaros, Baum & Bolles
	Gerald Bartucci	M.G. McLaren, PC d/b/a McLaren Engineering Group
	Anthony Borrelli	BERGMANN
	Bruce Brown	Brown and Caldwell Associates
	Kenneth Bruce	Brown and Caldwell Associates
	Sergio Callen	Atkins
	Jeff Carpenter	Parsons Corporation
	Denise Carter	Greenman-Pedersen, Inc.
	Liam Dalton	HNTB New York Engineering and Architecture, P.C.
	Ray Daddazio	Thornton Tomasetti
	John Deerkoski	AECOM
	David DeLuca	Hardesty & Hanover, LLC
	Lee Ecker	CHA
	James Feeley	Pathfinder Engineers & Architects LLP
	Cindy Feinberg	JFK&M
	Leo Fernandez	Thornton Tomasetti
	Wendy Ho	AKRF, Inc.
	Charles Hocking	Hazen and Sawyer
	Margaret Hopkins	AKRF, Inc.
	Joann Iddon	Arup
	Daryl Johnson	Gannett Fleming Engineers and Architects, P.C.
	Dennis Kennelly	T.Y. Lin International Engineering & Architecture, P.C.
	Michael Kennedy	Jacobs
	Charles F. King	Urban Engineers of New York, D.P.C.
	Bruce Lilker	Lilker Associates Consulting Engineers, P.C.
	Jessica Mariani	HVEA Engineers
	Mark Molnar	Wendel WD Architecture, Engineering, Surveying and Landscape Architecture, P.C.
	John Murray	McMillen Jacobs Associates
	Andy Narus	Cameron Engineering & Associates, LLP
	Áine O'Dwyer	Enovate Engineering, LLC dba Enovate Services, LLC in NY
	Tasos Papathanasiou	Langan Engineering, Environmental, Surveying, Landscape Architecture and Geology, DPC
	Chris Sklavounakis	HDR
	Jason Stern	Greenman-Pedersen, Inc.
	Philip Thayaparan	Prudent Engineering, LLP
	Joan Verbon	Sam Schwartz Engineering, DPC
	Carol Wynperle	WSP USA

**Legal Counsels Forum**

**Staff Liaison: Campbell H. Wallace, ACEC New York**

<b>Chair:</b>	Jeanette Baiardi AKF Group LLC One Liberty Plaza 165 Broadway, 22nd floor New York, NY 10006 212-354-5656 jbaiardi@akfgroup.com	
<b>Members:</b>	Robert Banner Scott Beratan Anjanette Bobrow David Boren Daniel Borriello Gregg Bundschuh Annalee Cataldo-Barile Gerry Cavaluzzi  Howard Cohen Kent Collier Audrey Daly Michael De Chiara Joseph Dennis Duncan Findlay Ken Fisher Eric Gernant Elise Greenspan Judith Held Lena Holohan Hillary Jassey Meryle Kaleda June Kibe Charles Kim Michael Klerer Mark Kriss Ellen Laberge Harry Makris John McCarthy William McCarthy Barbara McLemore Eric Morgenweck Colleen Mullaney-Westfall Robert Orlin Michael Platt Shoshana Rosenberg Lee Sacket Peter Seiden Jonathan Sinnreich Jennifer Smith Jeff Stone Martin Schwartzberg John Sutphen Lina Telese Thomas Titsworth	Ingram Yuzek Gainem Carroll + Bertolotti LLP HDR Syska Hennessy Group, Inc. PG Genatt Group, LLC Thornton Tomasetti Greyling Insurance Brokerage Sinnreich & Kosakoff, LLP Kennedy/Jenks Consultants and KJ Engineers and Geologists of New York PC  AECOM Greyling Insurance Brokerage Gannett Fleming Engineers and Architects, P.C. Zetlin & De Chiara LLP Arup GHD Consulting Services, Inc. Cozen O'Connor OBG AECOM STV Group Arup WSP USA ATANE Design and Construction Consultants WSP USA ACEC AECOM Kriss Kriss and Brignola C&S Companies Milber Makris Plousadis & Seiden, LLP Bolton-St. Johns, LLC Bolton-St. Johns, LLC Gannett Fleming Engineers and Architects, P.C. AKRF, Inc. Ecology and Environment Engineering, P.C.  AECOM CHA WSP USA L'Abbate, Balkan, Colavita & Contini, L.L.P. Milber Makris Plousadis & Seiden, LLP Sinnreich & Kosakoff, LLP C&S Companies Stantec Consulting Services Inc. Marshall Dennehey Warner Coleman & Goggin, P.C. OBG Jaros, Baum & Bolles CHA

Nicholas Toumbekis  
Michael Vardaro

PG Genatt Group, LLC  
Zetlin & De Chiara LLP

***Technology Committee***

**Chair:**

John DiCamillo  
Arup  
77 Water Street  
New York, NY 10005  
212-896-3000  
john.dicamillo@arup.com

**Members:**

Robert Allen	HDR
Alex Cabrera	AKF Group LLC
Jim Dray	Thornton Tomasetti
Michael Fichter	SUPERSTRUCTURES Engineers + Architects
Benjamin Lague	Stantec Consulting Services Inc.
Tibor Menyhart	STV Group
Guy Pascarello	Syska Hennessy Group, Inc.
Justin Racelis	Stantec Consulting Services Inc.
Michael Soyfer	Lilker Associates Consulting Engineers, P.C.

---

## COMMUNICATIONS DIVISION

### David Taillon - Executive Committee Liaison

---

#### *Constitution Committee*

**Chair:** David Taillon  
CHA  
PO Box 5269, 111 Winners Circle  
Albany, NY 12205-0269  
518-453-4701  
DTaillon@chacompanies.com

**Members:**

Art Alzamora	Langan Engineering, Environmental, Surveying, Landscape Architecture and Geology, DPC
Thomas Cascino	AECOM
Deborah Chase	Greenman-Pedersen, Inc.
Gregory Cummings	Larson Design Group
Ray Daddazio	Thornton Tomasetti
Richard McFadden	Jaros, Baum & Bolles
Brian Miller	LaBella Associates, D.P.C.
Richard (Rick) Zottola	LERA Consulting Structural Engineers

#### *Engineering Excellence Committee*

**Co-Chair:** Anthony M. Arbore  
Jaros Baum & Bolles  
80 Pine Street  
New York, NY 10005  
212-530-9300  
arborea@jbb.com

**Co-Chair:** Linda Reardon  
NV5  
32 Old Slip  
New York, NY 10005  
212-741-8090  
Linda.Reardon@nv5.com

**Members:**

Steven Abbattista	OLA Consulting Engineers
Reema Albahari	STV Group
Erich Arcement	Erich Arcement Creative Consulting, Inc.
Nicola Belzer	Hardesty & Hanover, LLC
Donyelle Booker	COWI
Oscar Bustos	Urban Engineers of New York, D.P.C.
Rick Cardentey	WSP USA
Elias Dagher	Dagher Engineering, PLLC
Richard Drouin	Elementa Engineering
Lee Ecker	CHA
Cindy Feinberg	Jacob, Feinberg, Katz & Michaeli Consulting Group
Ellen Friedman	Urban Engineers of New York, D.P.C.
Martha Huguet	Mueser Rutledge Consulting Engineers
Timothy Krawetz	Syska Hennessy Group, Inc.
Maria Lehman	Parsons Corporation
Maxinne Leighton	Jaros, Baum & Bolles
Luke Martinek	Sam Schwartz Engineering, DPC
Patricia McBride	HDR

Anthony Montalto	Jaros, Baum & Bolles
Fotios Papamichael	Gannett Fleming Engineers and Architects, P.C.
Richard Peters	Hazen and Sawyer
Tricia QuanKep	TY Lin International Engineering & Architecture, P.C.
Kovid Saxena	Sam Schwartz Engineering, DPC
Gary Tow	HNTB New York Engineering and Architecture, P.C.

***Program Committee***

**Staff Liaison:**

Gina Potfora  
 ACEC New York  
 6 Airline Drive  
 Albany, NY 12205  
 518-452-8611  
 Gina@acecnyc.org

**Members:**

Richard Amodei	STV Group
Dean Angelakos	CHA
Chris LaTuso	HDR
Bernie McNeilly	WSP USA
John McSweeney	Greenman-Pedersen, Inc.
Jennifer Michniewicz	CPL
Dave Taillon	CHA

***Public Relations Committee***

**Chair:**

Jill Shorter  
 Ryan Biggs | Clark Davis Engineering & Surveying, D.P.C.  
 257 Ushers Road  
 Clifton Park, NY 12065  
 518-406-5506 ext 301  
 jshorter@ryanbiggs.com

**Members:**

Reema Albahri	STV Group
Carla Artis	Stantec Consulting Services Inc.
Elias Dagher	Dagher Engineering, PLLC
Nicole Dzuba	C&S Companies
Francois Fayad	Hinman Consulting Engineers
Cindy Feinberg	Jacob, Feinberg, Katz & Michaeli Consulting Group
Phillip Galbo	Watts Architecture & Engineering, D.P.C.
Michelle Galindez	Syska Hennessy Group, Inc.
Mark Ginocchio	STV Group
Jared Green	Langan Engineering, Environmental, Surveying, Landscape Architecture and Geology, DPC
Ozgur Gungor	Arup
Molly Hollister	WSP USA
Eileen O'Neill	Gannett Fleming Engineers and Architects, P.C.
Jack Robson	Foit-Albert Associates, Architecture, Engineering and Surveying, P.C.
Andrew Sandor	Atkins

### ***Recognition Awards Committee***

**Chair:** Daniel Savage  
Passero Associates, P.C.  
100 Liberty Pole Way  
Rochester, NY 14604  
585-325-1000  
dsavage@passero.com

**Vice-Chair:** Christopher LaTuso  
HDR  
500 Seventh Avenue, 15th Floor  
New York, NY 10018  
212-542-6000  
christopher.latuso@hdrinc.com

**Members:**

Francois Fayad	Hinman Consulting Engineers
Cindy Feinberg	Jacob, Feinberg, Katz & Michaeli Consulting Group
Donald Flood	Mott MacDonald
Craig Goodall	Kal Krishnan Consulting Services, Inc. (KKCS)
Martha Huguet	Mueser Rutledge Consulting Engineers
Maxinne Leighton	Jaros, Baum & Bolles
Michael Leydecker	Wendel WD Architecture, Engineering, Surveying and Landscape Architecture, P.C.
Jennifer Michniewicz	CPL
Richard Panchyk	Hardesty & Hanover, LLC
Scott Smith	CHA

### ***Scholarship Committee***

**Chair:** Steven Abendschein  
Stantec Consulting Services Inc.  
50 West 23<sup>rd</sup> Street  
New York, NY 10010  
646-490-3844  
steven.abendschein@stantec.com

**Vice-Chair:** Elias Dagher  
Dagher Engineering, PLLC  
29 Broadway  
New York, NY 10006  
212-480-2591  
edagher@dagherengineering.com

**Members:**

Arthur Alzamora	Langan Engineering, Environmental, Surveying, Landscape Architecture and Geology, DPC
Greg Babino	Greenman-Pedersen, Inc
Maria Bruschi	Parsons Corporation
Mark Butcher	Popli, Architects + Engineering & L.S., D.P.C. d/b/a Popli Design Group
Courtney Clark	Thornton Tomasetti
Christopher Colasanti	Jaros, Baum & Bolles
Raymond Daddazio	Thornton Tomasetti
Michael DesRochers	Loring Consulting Engineers, Inc.
Julia Dockum	AECOM
Cindy Feinberg	JFK&M
Marc Gallagher	Langan Engineering, Environmental, Surveying, Landscape Architecture and Geology, DPC

Greg Hutter	Popli, Architects + Engineering & L.S., D.P.C. d/b/a Popli Design Group
Christina Minkler	JMT of New York, Inc.
Einah Pelaez	HDR
James Regan	Syska Hennessy Group, Inc.
Amir Rizavi	VHB
Linda Rosenberg	STV Group
Brian Towers	Jaros, Baum & Bolles
Joseph Viola	WSP USA
Jonathan Watts	Watts Architecture & Engineering, D.P.C.
Cassandra Wetzel	GZA GeoEnvironmental of New York
Alexander Wright	WSP USA
Peter Young	Hazen and Sawyer



---

**MEMBER SERVICES DIVISION****Gregory Cummings - Executive Committee Liaison**

---

***Budget & Finance Committee***

**Chair:** Gregory Cummings  
Larson Design Group  
1 West Market Street, 3<sup>rd</sup> Floor, Suite 401  
Corning, NY 14830  
607-936-7076  
gmc@larsondesigngroup.com

**Members:**

Vicki Arbitrio	Gilsanz Murray & Steficek, LLP
Tom Cascino	AECOM
Joseph Celentano	Land Design DPC
Lee Ecker	CHA
Kenneth Ellsworth	Keystone Associates Architects, Engineers and Surveyors, LLC
Chris Hahn	Vachris Engineering, P.C.
Tim Harris	Passero Associates, DPC
Shawn Logan	McMahon & Mann Consulting Engineers, P.C.
Bernie McNeilly	WSP USA
Chris Paolini	CME

***Investment Committee***

David Chambers	Delta Engineers, Architects & Land Surveyors, DPC
Chuck Kohler	STV Group
Patrick Sheridan	WSP USA
Paul Ursich	Wiss & Company, LLP

***Business Practice Committees (2)******1) CFO/Controller Committee***

**Co-Chair:** Joshua Anderson  
Workplace Retirement Group of Raymond James  
4 Caufield Place, Suite 101  
Newtown, PA 18940  
215-497-7430  
josh.anderson@raymondjames.com

**Co-Chair:** Robert Brewer, CPA, CCIFP  
Grassi & Co.  
50 Jericho Quadrangle #200  
Jericho, NY 11753  
516-336-2420  
RBrewer@grassicpas.com

**Members:**

Olena Allen	Arup
Josh Anderson	Workplace Retirement Group of Raymond James
Dom Bernardo	CHA
Thomas Butcher	STV Group
Robert Brewer	Grassi & Co.
James Cahill	Watts Architecture & Engineering, D.P.C.
David Chambers	Delta Engineers, Architects, & Land Surveyors, PC
Daniel Clarke	Wells Fargo Bank N.A.
Louis Curatolo	Syska Hennessy Group, Inc.

Francois Fayad	Hinman Consulting Engineers
Robert Fennessey	HDR
Joseph Ferreira	Albrecht, Viggiano, Zureck & Company, P.C.
Peter Friebe	Lilker Associates Consulting Engineers, P.C.
Robert Goossen	Fisher Associates, P.E., L.S., L.A., D.P.C.
William Kraekel	Langan Engineering, Environmental, Surveying, Landscape Architecture and Geology, DPC
Benny Liu	Citrin Cooperman & Company LLP
Richard Maxwell	Barton & Loguidice, D.P.C.
Eric Morgenweck	AKF Group LLC
Michael Motyka	WSP USA
Brian Murphy	CohnReznick LLP
Phillip Ross	Anchin, Block & Anchin LLP
Greg Smith	H2M Architects, Engineers, Land Surveying and Landscape Architecture, DPC
David Thornhill	AKF Group LLC
Randy Tuthill	C&S Companies
Joan Verbon	Sam Schwartz Engineering, DPC
Rimma Zaleznik	Thornton Tomasetti

**2) Human Resources**

**Chair:** Katherine Metcalfe  
 CPL  
 205 St. Paul Street, Suite 500  
 Rochester, NY 14604  
 585-402-7533  
 kmetcalfe@cplteam.com

**Members:** Jennifer Chatt      CHA  
 Aneta Dzepina      SUPERSTRUCTURES Engineers + Architects  
 Clodagh Fraccari      Langan Engineering, Environmental, Surveying, Landscape  
    Architecture and Geology, DPC  
 Lauren Fuchs      Langan Engineering, Environmental, Surveying, Landscape  
    Architecture and Geology, DPC  
 Michelle Green      Arup  
 Vicki Hobson      Syska Hennessy Group, Inc.  
 Diana Kaufman      C&S Companies  
 Amy Marra      CPL  
 Chad Robertson      Fisher Associates, P.E., L.S., L.A., D.P.C.  
 Liz Uzzo      H2M Architects, Engineers, Land Surveying, Landscape  
    Architecture, DPC

***DMWBE Committee***

**Chair:**

Cletus Ezenwa  
Lu Engineers  
339 East Avenue, Suite 200  
Rochester, NY 14604  
585 385-7417  
cezenwa@luengineers.com

**Members:**

Robert Badger	Kal Krishnan Consulting Services Inc.
J. Evans Doleyres	JED Engineering, P.C.
Gene Eng	GC Eng & Associates P.C.
Cindy Feinberg	Jacob, Feinberg, Katz & Michaeli Consulting Group
Gary Guleria	A.G. Consulting Engineering, P.C.
Julie Kroloff	Integrated Strategic Resources, LLC.
Kai Marion	C&S Companies
Sanjay Naik	Naik Consulting Group, P.C.
Nagappa Ravindra	Ravi Engineering and Land Surveying, P.C.
Kamal Shahid	KS Engineers, P.C.
Barbara Thayer	B. Thayer Associates
Jaimee Wilson, P.E.	Pathfinder Engineers and Architects
Edward Watts, Jr.	Watts Architecture & Engineering, D.P.C.

---

**GOVERNMENT AFFAIRS I – TRANSPORTATION 1 DIVISION****Deborah Chase - Executive Committee Liaison**

---

***New York City Department of Transportation Committee (NYCDOT)***

**Chair:** Kamal Shahid  
KS Engineers, P.C.  
65 Broadway  
New York, NY 10006  
973-623-2999  
kshahid@kseng.com

**Members:**

Ayman Baki	Tectonic Engineering & Surveying Consultants P.C.
Ahmed Bashjawish	Jacobs
Stelios Bertos	Stantec Consulting Services Inc.
Oscar Bustos	Urban Engineers of New York, D.P.C.
William Marman	Michael Baker International, Inc.
Amir Rizavi	VHB Engineering, Surveying and Landscape Architecture, P.C.
Jeff Smithline	Sam Schwartz Engineering, D.P.C.

***NYC Economic Development Corporation Committee***

**Chair:** Rachel Belsky  
Langan Engineering, Environmental, Surveying, Landscape  
Architecture and Geology, DPC  
21 Penn Plaza, 36 West 31<sup>st</sup> Street, 8<sup>th</sup> Floor  
New York, NY 10001-2727  
212-479-5400  
rbelsky@langan.com

**Members:**

Karen Franz	AKRF, Inc.
Jen Heymach	Greenman Pedersen, Inc.
Hesham Kotby	ATANE Design and Construction Consultants
Michael Liona	Hardesty & Hanover, LLC
Michael Mudalel	MFS Consulting Engineers & Surveyors, DPC
Andrew Narus	Cameron Engineering & Associates, LLP
Tammy Petsios	STV Group
Gary Sorge	Stantec Consulting Services Inc.

***Metropolitan Transportation Authority Committees***

**Chair:** Maxine Hill  
WSP USA  
One Penn Plaza  
New York, NY 10119  
212-465-5487  
Maxine.hill@wsp.com

**Vice-Chair, B&T:** Giuseppe (Joe) Tulumello  
Gannett Fleming Engineers and Architects, P.C.  
Two Penn Plaza, Ste 552, 380 Seventh Ave.  
New York, NY 10121  
212-967-9833  
jtulumello@gfnet.com

**Vice-Chair, Rail:** Genaro Velez  
COWI  
276 5<sup>th</sup> Avenue, Suite 1006  
New York, NY 10001  
646-545-2125  
gevz@cowi.com

***MTA Bridges & Tunnels Sub-Committee***

<b>Members:</b>	Genaro Velez (lead)	COWI
	Leo Fernandez	Thornton Tomasetti
	Joseph Menzer	NV5
	Jay Popli	Popli, Architects + Engineering & L.S., D.P.C. d/b/a Popli Design Group
	Morgan Ryan	McMillen Jacobs Associates
	Richard Stevens	Hardesty & Hanover

***MTA Rail (MNR, LIRR) Sub-Committee***

<b>Members:</b>	Giuseppe Tulumello (lead)	Gannett Fleming Engineers and Architects, P.C.
	Chandu Borhaniya	T.Y. Lin International Engineering & Architecture, P.C.
	Peter Guest	Arup
	Barbara Thayer	B. Thayer Associates

***MTA NYC Transit Sub-Committee***

<b>Members:</b>	Maxine Hill (lead)	WSP USA
	Art Alzamora	Langan Engineering, Environmental, Surveying and Landscape Architecture and Geology, DPC
	Michael Cresci	Naik Consulting Group, P.C.
	John Daza	HNTB
	Frank Facciolo	Mott MacDonald
	Anil Parikh	AECOM

***NYS Thruway Authority Committee***

**Chair:** Neal Weitman  
WSP USA  
2500 Westchester Avenue, Suite 305  
Purchase, New York 10577  
914-967-5800  
Neal.weitman@wsp.com

<b>Steering Committee:</b>	Wayne Bonesteel	Maser Consulting P.A.
	Jim Bridges	M.G. McLaren, PC d/b/a McLaren Engineering Group
	Tony D. Canale	Mueser Rutledge Consulting Engineers
	Phil Galbo	Watts Architecture & Engineering, D.P.C.
	Steve Godlewski	Creighton Manning Engineering, LLP
	Cristina Lauzon	HNTB New York Engineering and Architecture, P.C.
	Jack Robson	Foit-Albert Associates, Architecture, Engineering and Surveying, P.C.
	Andy Sandor	Atkins
	Emily Smith	Fisher Associates, P.E., L.S., L.A., D.P.C.

***Port Authority of New York & New Jersey Committee (PANY&NJ)***  
*(joint committee of ACEC New York and New Jersey)*

**New York Chair:** Najib Abboud  
Thornton Tomasetti  
51 Madison Avenue  
New York, NY 10010  
917-661-7800  
nabboud@thorntontomasetti.com

**NY Steering Committee:**

Aakash Badjatya	LERA Consulting Structural Engineers
Joshua Nelson	Hatch
Francisco Ruela	Systra
Steve Sonmez	Lizardos Engineering Associates
Brendan Weiden	Jaros, Baum & Bolles

*This committee is a joint committee with ACEC New Jersey. Tony Panzarino of Parsons is Vice-Chair of the joint PANYNJ Committee (and is Chair of ACEC New Jersey's PANYNJ Capital Program Delivery Committee)*

***NYS Bridge Authority Committee***

**Chair:** John Paul Cunningham  
HDR  
711 Westchester Avenue #103  
White Plains, New York 10604  
914-993-2000  
johnpaul.cunningham@hdrinc.com

**Members:**

Matt Carter	Arup
Francois Fayad	Hinman Consulting Engineers
Andy Sandor	Atkins

---

**GOVERNMENT AFFAIRS II – TRANSPORTATION 2 DIVISION****Brian Miller - Executive Committee Liaison**

---

***NYS Aviation Committee***

**Chair:** Jeremy Martelle  
CHA  
PO Box 5269  
III Winners Circle  
Albany, NY 12205-0269  
518-453-3931  
jmartelle@chacompanies.com

**Members:**

Kirsten Cerro	C&S Companies
Indhira Figuereo	WSP USA
Navin Natarajan	AECOM
Julie Pietrzak	Enovate Engineering, LLC dba Enovate Services, LLC in NY
Andrew Schueller	Naik Consulting Group, P.C.
Greg Topping	Passero Associates, DPC
TBD	B. Thayer Associates

***NYS County Highway Superintendents Committee***

**Chair:** Roseann Schmid  
Fisher Associates, P.E., L.S., L.A., D.P.C.  
135 Calkins Road, Suite A  
Rochester, NY 14623  
585-334-1310  
rschmid@fisherassoc.com

**Members:**

Joseph Dopico	Maser Consulting P.A.
Charlie Kincaid	JMT of New York, Inc.
Mia Nadasky	HVEA Engineers
Karl Rohde	Nussbaumer & Clarke, Inc.
Dan Savage	Passero Associates, DPC
Matt Smullen	CPL
Charles Tutunjian	Creighton Manning Engineering, LLP

***NYS Parks & Recreation Committee***

**Chair:** Karim Palomino  
PRIME AE Group of NY  
315 Madison Avenue, Suite 3023  
New York, NY 1001  
646-979-3613  
kpalomino@primeeng.com

**Members:**

Shawn Cowe	Foit-Albert Associates, Architecture, Engineering and Surveying, P.C.
Paul Grosser	P.W. Grosser Consulting Engineer & Hydrogeologist, PC
Laura Schwanof	GEI Consultants, Inc., P.C.
James Wilson	MP Engineers, P.C.

***Federal Highway Administration (FHWA)***

**Chair:** Michael Loftus  
HNTB New York Engineering and Architecture, P.C.  
7 Southwoods Boulevard, Suite 203  
Albany, NY 12211  
518-560-5700  
mloftus@hntb.com

**Members:** Phillip Galbo Watts Architecture and Engineering DPC  
Richard Perrin T.Y. Lin International Engineering & Architecture, P.C.  
Simon Rule Arup

***NYS Canals Committee***

**Chair:** Greg Johnson  
BERGMANN  
280 East Broad Street, Suite 200  
Rochester, New York 14604  
585-232-5135  
gjohnson@bergmannpc.com

**Members:** Nate Buczek T.Y. Lin International Engineering & Architecture, P.C.  
Ken Knutsen Barton & Loguidice, D.P.C.  
Larry Martin OBG  
Dan Thomas Greenman-Pedersen, Inc.  
Patrick Waterman LaBella Associates, DPC

***NYS Department of Transportation Committee (NYSDOT)***

**Chair:** Linda Shumaker  
Shumaker Consulting Engineering & Land Surveying, D.P.C.  
143 Court Street  
Binghamton, NY 13901  
607-798-8081  
lshumaker@shumakerengineering.com

**Steering Committee:** Jane Charalambous HDR  
Lee Ecker CHA  
Scott Faulkner McFarland-Johnson, Inc.  
John Grady Ravi Engineering and Land Surveying, P.C.  
Quaiser Hashmi ATANE Design and Construction Consultants  
A.J. Jannesari CDM Smith  
Maria Lehman Parsons Corporation  
Jim Morrissey C&S Companies  
Ashley Richey STV Group  
Simon Rule Arup  
Patrick Waterman LaBella Associates, D.P.C.



---

**GOVERNMENT AFFAIRS III – VERTICAL 3 DIVISION****Rick Zottola - Executive Committee Liaison**

---

***Dormitory Authority of the State of New York Committee (DASNY)***

**Chair:** Michael Winderl  
LaBella Associates, D.P.C.  
300 State Street #201  
Rochester, NY 14614  
585-454-6110  
mwinderl@labellapc.com

**Members:**

Nicholas Kumbatovic	Cameron Engineering & Associates LLP
Lisa Lau	AKRF, Inc.
Christopher Mele	AI Engineers, Inc, PC
David J. Meyer	Pathfinder Engineers & Architects, LLP
Tom Scerbo	AECOM
Andrew Taylor	Erdman Anthony

***New York City Department of Design & Construction Committee (NYCDDC)***

**Chair:** Denise Carter  
Greenman-Pedersen, Inc.  
325 West Main Street  
Babylon, NY 11702  
631-587-5060  
dcarter@gpinet.com

**Members:**

John Galetta	SUPERSTRUCTURES Engineers + Architects
Muhammed Izhar	SI Engineering, P.C.
Jared Krause	Urban Engineers of New York, D.P.C.
Luke Martinek	Sam Schwartz Engineering, DPC
Maike Rodriguez	Infrastructure Engineering, Inc., P.C.
Ehab Shehata	Bravo
Bob Steele	L.K. McLean Associates, P.C.

***NYC Housing Authority Committee***

**Chair:** Nick Dandolo  
Gannett Fleming Engineers and Architects, P.C.  
Two Penn Plaza, Suite 552  
New York, NY 10121  
212-967-9833 x5210  
ndandolo@gfnet.com

**Members:**

Ayman Baki	Tectonic Engineering & Surveying Consultants P.C.
Tanya de Hoog	Thornton Tomasetti
Robert Ikes III	H2M architects + engineers
Joseph Masiello	Dewberry
Fabrizio Munoz	Munoz Engineering, P.C.
Michael Urbach	WSP USA
Josephine Zurica	Dagher Engineering, PLLC

***NYC Building - School Construction Authority Committee (NYC SCA)***

**Chair:** Jon Miller  
STV Group Inc.  
225 Park Avenue South  
New York, NY 10003  
212-614-7619  
Jon.miller@stvinc.com

**Members:** Ron Dasgupta A.G. Consulting Engineering, PC  
Michael DesRochers Loring Consulting Engineers, Inc.  
Kabi Pandey Lilker Associates Consulting Engineers, P.C.  
Jared Quartel HDR  
Giuseppe (Joe) Tulumello Gannett Fleming Engineers and Architects, P.C.  
Elias Matar LERA Consulting Structural Engineers

***NYS Office of General Services Committee (NYS OGS)***

**Chair:** Rich Amadon  
CHA  
PO Box 5269, III Winners Circle  
Albany, New York 12205  
518-453-4500  
ramadon@chacompanies.com

**Members:** Nick Cerro C&S Companies  
Peter Koklanis M.G. McLaren, PC d/b/a McLaren Engineering Group  
Chris Kopec McFarland-Johnson, Inc.  
Rob Kovacs GHD Consulting Services, Inc.  
Travis Overton BCA Architects & Engineers  
Jeffrey Trzeciak PRIME AE Group of NY  
Cassandra Wetzal GZA GeoEnvironmental of New York

***State University Construction Fund Committee (SUCF)***

**Chair:** Michael DesRochers  
Loring Consulting Engineers, Inc.  
360 W 31<sup>st</sup> Street  
New York, NY 10001  
646-674-6106  
mdesrochers@loringengineers.com

**Members:** Dirk Anderson Lizardos Engineering Associates. P.C.  
Wayne Hui Syska Hennessy Group, Inc.  
Christine Oates Jacobs  
Ed Watts Jr. Watts Architecture & Engineering, D.P.C.



***NYS Environmental Facilities Corporation Committee***

**Chair:** Greg Cummings  
Larson Design Group  
1 West Market Street, 3rd Floor, Suite 401  
Corning, NY 14830  
607-936-7076  
gmc@larsondesigngroup.com

**Members:** Carolyn Lowe                      D&B Engineers and Architects, P.C.  
Michael Marino                      Nussbaumer & Clarke, Inc.  
Gregor Smith                      BCA Architects & Engineers  
Jeffrey Smith                      Municipal Solutions, Inc.

***Energy Committee***

**Chair:** Dwight Harrienger  
Stantec Consulting Services, Inc.  
61 Commercial Street, Suite 100  
Rochester, NY 14614  
585-413-5257  
dwright.harrienger@stantec.com

**Members:** Charles Bertuch                      BERGMANN  
Bill Bishop                      Pathfinder Engineers & Architects LLP  
Andrew Clevenger                      KCI Engineering of New York, P.C.  
Scott Frank                      Jaros, Baum & Bolles  
Steve Giordano                      Dewberry  
Paul Knowles                      Hazen and Sawyer  
Christopher Korzenko                      CDM Smith  
Miguel Lopez                      Gilsanz Murray Steficek, LLP Engineers and Architects  
Charlie Marino                      AKF Group LLC  
Ronald Mineo                      Genesys Engineering, P.C.  
Tristan Schwartzman                      Goldman Copeland Associates, PC

***New York Power Authority Committee (NYPA)***

**Chair:** Larry Martin  
OBG  
333 W. Washington Street, PO Box 4873  
Syracuse, NY, 13221  
315-956-6241  
Larry.martin@obg.com

**Members:** Karen Clark                      Barton & Loguidice, D.P.C.  
Dwight Harrienger                      Stantec Consulting Services Inc.  
Robert LaFleur                      JMT New York, Inc.

**Scholarship Fund (separate 501c3):**

**Chair:** Steven Abendschein  
Stantec Consulting Services Inc.  
475 5<sup>th</sup> Avenue  
New York, NY 10017  
212-366-5600  
steven.abendschein@stantec.com

**Members:**

Arthur Alzamora	Langan Engineering, Environmental, Surveying, Landscape Architecture and Geology, DPC
Elias Dagher	Dagher Engineering, PLLC
Greg Hutter	Popli, Architects + Engineering & L.S., D.P.C. d/b/a Popli Design Group
Chris LaTuso	HDR
Christina Minkler	JMT of New York, Inc.
Peter Young	Hazen and Sawyer

If you have any changes or corrections to this list, please email Tina Deale at [tina@acecny.org](mailto:tina@acecny.org).