

## **State Committees**

**August 1, 2021 – July 31, 2022**

*Committees are essential to the mission and vision of ACEC New York. The work of these committees affects all aspects of the engineering profession, from legislative advocacy to environmental issues.*

*Committees offer more than a significant opportunity to impact the professional environment:*

- *Committee work is often highly educational and interactive.*
- *Members share information that can improve their business practices and help make their firms more profitable and successful, and their efforts support the industry as a whole.*
- *Committee involvement is a great way to build connections with people throughout the organization and the entire industry.*

*As you can see on the following pages, there is an ACEC New York committee for virtually every interest, and each one is important to the organization and the industry. If you are interested in serving on a committee, please sign up through your firm when participation forms are issued to the main contact at each member firm in the Spring.*

**NOTE:** *To search within the PDF, press CTRL + F to open a search bar and enter firm name.*

---

## Table of Contents

---

<a href="#">ACEC New York Organizational Chart</a> .....	4
<b>Legislative Affairs Division</b>	
<b>Dan Duprey, Executive Committee Liaison</b>	
<a href="#">Emerging Leaders Committee</a> .....	5
<a href="#">Legislative Committee</a> .....	6
1) <a href="#">Federal Committee/ACECPAC</a> .....	7
<a href="#">Membership Committee</a> .....	8
<a href="#">Nominating Committee</a> .....	9
<a href="#">Construction Safety Committee</a> .....	9
<b>Professional &amp; Industry Division</b>	
<b>Ray Daddazio, Executive Committee Liaison</b>	
<a href="#">Continuing Education Committee</a> .....	10
<a href="#">Council of Chairs Committee</a> .....	10
<a href="#">Design-Build Committee</a> .....	11
<a href="#">Legal Counsels Forum</a> .....	12
<a href="#">Technology Committee</a> .....	13
Ad-Hoc DEIB Committee.....	14
<b>Communications Division</b>	
<b>Nancy Clark, Executive Committee Liaison</b>	
<a href="#">Constitution Committee</a> .....	15
<a href="#">Engineering Excellence Committee</a> .....	15
<a href="#">Program Committee</a> .....	16
<a href="#">Public Relations Committee</a> .....	16
<a href="#">Recognition Awards Committee</a> .....	17
<a href="#">Scholarship Committee</a> .....	17
<a href="#">Scholarship Fund Committee (separate 501c3)</a> .....	18
<b>Member Services Division</b>	
<b>Brian Miller, Executive Committee Liaison</b>	
<a href="#">Budget &amp; Finance Committee</a> .....	19
1) <a href="#">Investment</a> .....	19
Business Practice Committees:	
1) <a href="#">CFO/Controller Committee</a> .....	19
2) <a href="#">Human Resources Committee</a> .....	20
<a href="#">DMWBE Committee</a> .....	21
<b>Government Affairs I – Transportation 1 Division</b>	
<b>Linda Reardon, Executive Committee Liaison</b>	
<a href="#">NYC Department of Transportation Committee</a> .....	22
<a href="#">NYC Economic Development Corporation Committee</a> .....	22
<a href="#">Metropolitan Transportation Authority Committees</a> .....	22
1) <a href="#">Bridges &amp; Tunnels Sub-committee</a> .....	23
2) <a href="#">Rail (MNR, LIRR) Sub-committee</a> .....	23
3) <a href="#">NYC Transit Sub-committee</a> .....	23
<a href="#">NYS Thruway Authority Committee</a> .....	23
<a href="#">Port Authority of New York &amp; New Jersey Committee</a> .....	24

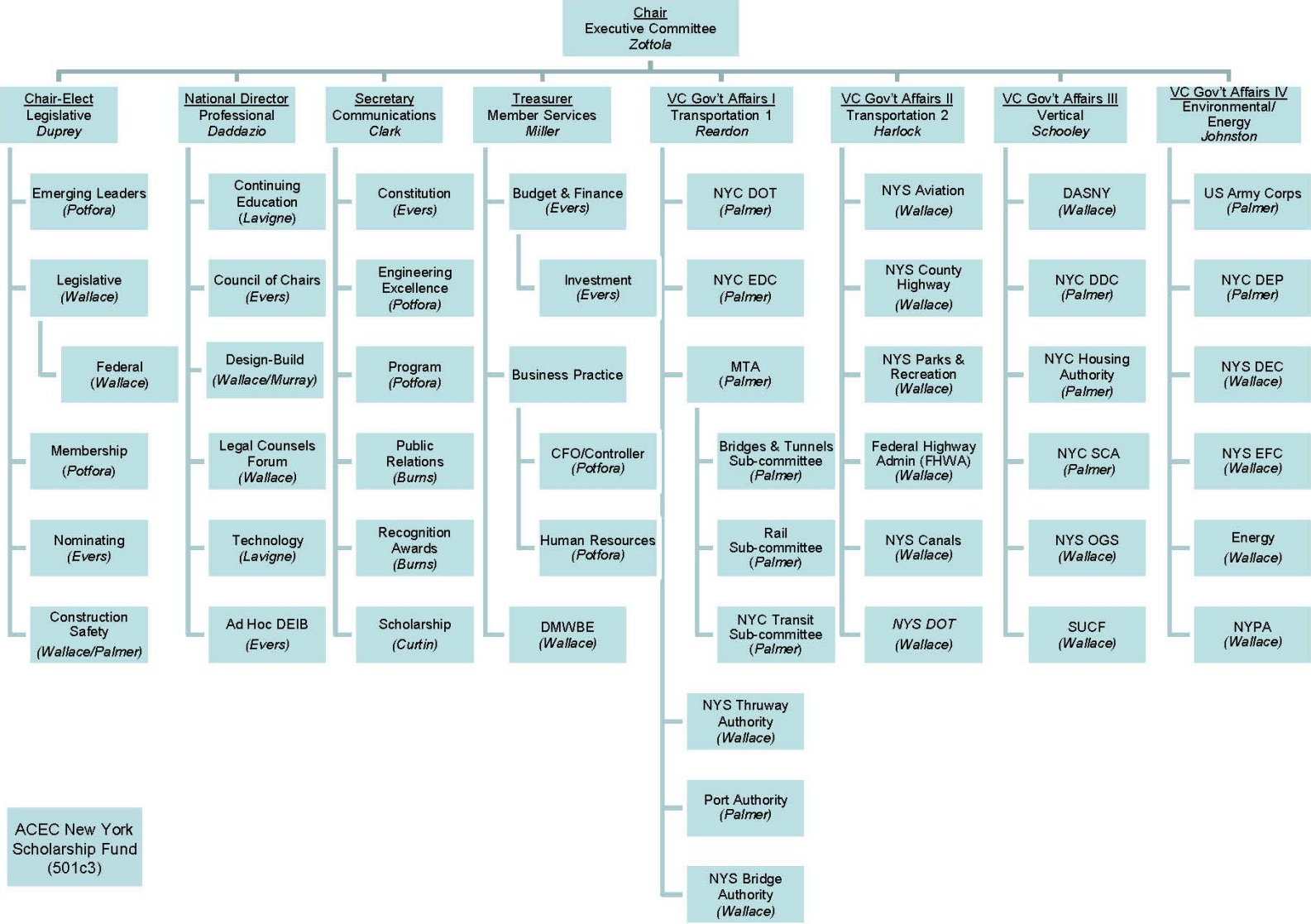
---

## Table Contents

---

<a href="#">NYS Bridge Authority Committee</a> .....	24
<b>Government Affairs II – Transportation 2 Division</b>	
<b>Keith Harlock, Executive Committee Liaison</b>	
<a href="#">NYS Aviation Committee</a> .....	25
<a href="#">NYS County Highway Superintendents Committee</a> .....	25
<a href="#">NYS Parks &amp; Recreation Committee</a> .....	25
<a href="#">Federal Highway Administration (FHWA)</a> .....	26
<a href="#">NYS Canals Committee</a> .....	26
<a href="#">NYS Department of Transportation Committee</a> .....	26
<b>Government Affairs III – Vertical Division</b>	
<b>Matt Schooley, Executive Committee Liaison</b>	
<a href="#">Dormitory Authority of the State of New York Committee</a> .....	27
<a href="#">NYC Department of Design &amp; Construction Committee</a> .....	27
<a href="#">NYC Housing Authority Committee</a> .....	28
<a href="#">NYC School Construction Authority Committee</a> .....	28
<a href="#">NYS Office of General Services Committee</a> .....	28
<a href="#">State University Construction Fund Committee</a> .....	29
<b>Government Affairs IV – Environmental/Energy Division</b>	
<b>Shelly Johnston, Executive Committee Liaison</b>	
<a href="#">US Army Corps of Engineers Committee</a> .....	30
<a href="#">NYC Department of Environmental Protection Committee</a> .....	30
<a href="#">NYS Department of Environmental Conservation Committee</a> .....	30
<a href="#">NYS Environmental Facilities Corporation Committee</a> .....	31
<a href="#">Energy Committee</a> .....	31
<a href="#">New York Power Authority Committee</a> .....	31

# ACEC New York 2021-2022 Committee Organizational Chart



---

**LEGISLATIVE AFFAIRS DIVISION**  
**Dan Duprey - Executive Committee Liaison**

---

***Emerging Leaders Committee***

**Chair:** Alexandra Gore  
WSP USA Inc.  
One Penn Plaza  
New York, NY 10119  
212-631-3761  
Alexandra.Gore@wsp.com

**Vice-Chair:** Daniel Rice  
Stantec Consulting Services Inc.  
475 Fifth Avenue, 12th Floor  
New York, NY 10017-7239  
212-366-5615  
Daniel.Rice@stantec.com

**Members:**

Alex Akselrod	Lilker Associates Consulting Engineers, P.C.
Alison Auriemmo	H2M architects + engineers
Jeanette Baiardi	AKF Group LLC
Sharon Berger	Gannett Fleming Engineers and Architects, P.C.
Donyelle Booker	COWI
Oscar Bustos	Urban Engineers of New York, D.P.C.
Seth Condell	Parsons
Mike DeGaspari	VHB Engineering, Surveying and Landscape Architecture, P.C.
Anthony DeSantis	B. Thayer Associates
Alex Engelman	Syska Hennessy Group, Inc.
Cindy Feinberg	Jacob, Feinberg, Katz & Michaeli Consulting Group
Frank Filiciotto	Creighton Manning Engineering, LLP
Nick Fox	Syska Hennessy Group, Inc.
Jacob Fradkin	MFS Engineers & Surveyors
Ellen Friedman	Urban Engineers of New York, D.P.C.
Jared Green	Langan Engineering, Environmental, Surveying, Landscape Architecture and Geology, DPC
Brian Heflich	P.W. Grosser Consulting Engineer & Hydrogeologist, PC
Robert Ioanna	Syska Hennessy Group, Inc.
David Jones	M.G. McLaren, PC, d/b/a McLaren Engineering Group
Thomas Kelleher	LERA Consulting Structural Engineers
Jenny Lund	P.W. Grosser Consulting Engineer & Hydrogeologist, PC
Ryan Manderbach	Langan Engineering, Environmental, Surveying, Landscape Architecture and Geology, DPC
Shravya Markandeya	CHA
Michael Martello	HDR
Seth Martin	Langan Engineering, Environmental, Surveying, Landscape Architecture and Geology, DPC
Christina Minkler	JMT of New York, Inc.
Peter Moore	MFS Engineers & Surveyors
Alexander Napoli	STV Group
Ronak Patel	MP Engineers and Architects, P.C.
Damian Payne	Loring Consulting Engineers, Inc.
Asher Peltz	GEI Consultants, Inc., P.C.
Chris Pollock	Arup
Daniel Rice	Stantec Consulting Services Inc.
Brendan Smith	WSP USA Inc.
Eithan Sonnino	AECOM

**Legislative Committee****Chair**

Maria Lehman  
 GHD Consulting Services, Inc.  
 285 Delaware Ave, Suite 500  
 Buffalo, NY 14202  
 716-856-2142  
 maria.lehman@ghd.com

**Members:**

Joseph R. Amato	Cameron Engineering & Associates, LLP
Richard Amodei	STV Group
Rich Amadon	CHA
Nick Anastasi	P.W. Grosser Consulting Engineer & Hydrogeologist, PC
Dean Angelakos	Infinite Consulting Corp
Vicki Arbitrio	Gilsanz Murray Steficek, LLP
Jeanette Baiardi	AKF Group LLC
James Baker	Foundation Design P.C.
Robert A. Banner	Ingram Yuzek Gainen Carroll + Bertolotti LLP
Rena Barta	Parsons
Sharon Berger	Gannett Fleming Engineers and Architects, P.C.
Eric Betz	Mott MacDonald
John F. Brusa Jr.	Barton & Loguidice, D.P.C.
Kumar Buvanendaran	PRIME AE Group of NY
Serge Budzyn	Lilker Associates Consulting Engineers, P.C.
Robert Cartwright	Stantec Consulting Services Inc.
Vincent Cassano	Jacobs
Gerry Cavaluzzi	Kennedy/Jenks Consultants and KJ Engineers and Geologists of New York PC
Ali Chaudhry	AECOM
Jane Charalambous	HDR
Nancy Clark	KC Engineering and Land Surveying, P.C.
Phil Collin	HNTB New York Engineering and Architecture, P.C.
Daniel Colombini	Goldman Copeland Associates, PC
Charles Copeland	Goldman Copeland Associates, PC
Tom Curran	Stantec Consulting Services Inc.
Raymond Daddazio	Thornton Tomasetti
Frank DeSignore	CHA
Cindy Feinberg	Jacob, Feinberg, Katz & Michaeli Consulting Group
Donald Fletcher	Barton & Loguidice, D.P.C.
Peter Giovenco	BERGMANN
Brett Gough	Ames & Gough, Inc.
Charles Gozdziwski	Hardesty & Hanover, LLC
Bryan Grogan	P.W. Grosser Consulting Engineer & Hydrogeologist, PC
Ariganjan (Gary) Guleria	A.G. Consulting Engineering, PC
Douglas R. Halstrom	L'Abbate, Balkan, Colavita & Contini, L.L.P.
Julie Harris	Lu Engineers
Ryan Henderson	JMT of New York, Inc.
Maxine Hill	VHB Engineering, Surveying and Landscape Architecture, P.C.
Richard Horstmann	KS Engineers, P.C.
Greg Hutter	Popli Design Group
Robert Hutteman	LiRo Engineers Inc.
Jerry Jannetti	WSP USA Inc.
Cawsie Jijina	Severud Associates Consulting Engineers P.C.
Dennis Judson	Fisher Associates, P.E., L.S., L.A., D.P.C.
Walter Kaeck	Mueser Rutledge Consulting Engineers

Bernie Kalus	WSP USA Inc.
Charles King	Urban Engineers of New York, D.P.C.
James Laurita	Gannett Fleming Engineers and Architects, P.C.
Gary Loesch	H2M Architects, Engineers, Land Surveying and Landscape Architecture, DPC dba H2M architects + engineers
Jeffrey C. Lookup	Morrissey Goodale, LLC
Lou Luglio	Sam Schwartz Engineering D.P.C.
Orrin B. MacMurray	C&S Companies
Eric Madden	JMT of New York, Inc.
Barry Marin	Friedman LLP
Michael Marino	Nussbaumer & Clarke, Inc.
Mark McAnany	BERGMANN
William McCormick	Erdman Anthony
James McDuffee	Delta Engineers, Architects, & Land Surveyors, PC
Thomas McLaughlin	HDR
Brian Miller	LaBella Associates, D.P.C.
Paul Millman	SUPERSTRUCTURES Engineering + Architecture, PLLC
Steve Muschiano	Prime AE Group of NY
Mia Nadasky	HVEA Engineers
Sanjay Naik	Naik Consulting Group, P.C.
Andrew Narus	Cameron Engineering & Associates, LLP
Nigel Nicholls	Arup
Karim Palomino	PRIME AE Group of NY
Richard Peters	Hazen and Sawyer
Rick Pettis	Watts Architecture and Engineering, D.P.C.
Joseph Pizzurro	HNTB New York Engineering and Architecture, P.C.
Tricia Quan Kep	T.Y. Lin International Engineering & Architecture, P.C.
John Robson	Foit-Albert Associates, Architecture, Engineering and Surveying, P.C.
Lee Sackett	L'Abbate, Balkan, Colavita & Contini, L.L.P.
Andy Sandor	Atkins
Roseann Schmid	Fisher Associates, P.E., L.S., L.A., D.P.C.
Thomas Schoettle	CDM Smith
Samuel Schwartz	Sam Schwartz Engineering, DPC
Martin Schwartzberg	Marshall Dennehey Warner Coleman & Goggin, P.C.
Jerry Sentz	Foit-Albert Associates, Architecture, Engineering and Surveying, P.C.
Mike Shamma	Sam Schwartz Engineering, DPC
Linda Shumaker	Shumaker Consulting Engineers & Land Surveyors, D.P.C.
Emily Smith	Fisher Associates, P.E., L.S., L.A., D.P.C.
Julie Stein	HDR
Dan Sweetland	C&S Companies
Tim Treharne	Arup
John Trimble	C&S Companies
Mark Tytka	WSP USA Inc.
Genaro Velez	COWI
Richard Venvertloh	LaBella Associates, D.P.C.
David Weiss	WSP USA Inc.
Brian White	Ramboll
Stephen Willig	Donovan Hatem LLP
Susan Wylie	LaBella Associates, D.P.C.
Catherine Zinnell	VHB Engineering, Surveying and Landscape Architecture, P.C.

***Federal Sub-Committee/ACEC PAC***

**Chair:** Lee Ecker  
CHA  
PO Box 5269, III Winners Circle

Albany NY 12205  
518-453-4500  
lecker@chacompanies.com

<b>Member:</b>	Vicki Arbitrio	Gilsanz Murray Steficek LLP
	Geoffrey Baldwin	CDM Smith
	Christopher Bond	Hunt Engineers, Architects & Land Surveyors, P.C.
	Tom Cascino	AECOM
	Ray Daddazio	Thornton Tomasetti
	Jamie Davis	Ryan-Biggs   Clark Davis Engineering & Surveying
	Indhira Figuereo	WSP USA Inc.
	Cindy Feinberg	Jacob, Feinberg, Katz & Michaeli Consulting Group
	Charles Gozdziwski	Hardesty & Hanover, LLC
	Keith Harlock	WSP USA Inc.
	Jim Hirani	Hirani Engineering & Land Surveying, P.C.
	John Karn	Arup
	Jeffrey Lookup	Morrissey Goodale, LLC
	Christopher McDermott	AECOM
	Thomas McLaughlin	HDR
	Brian Miller	LaBella Associates, D.P.C.
	Kristina Raevska	STV Group
	Karl Rohde	Nussbaumer & Clarke, Inc.
	Lorenzo Rotoli	LaBella Associates, D.P.C.

***Membership Committee***

**Chair:** Daniel Duprey  
CPL  
205 St. Paul Street, Suite 500  
Rochester, NY 14604  
585-454-7600  
dduprey@cplteam.com

<b>Members:</b>	Richard Amodei	STV Group
	Christopher Bond	Hunt Engineers, Architects, Land Surveyors & Landscape Architect, DPC
	Paul Boyce	P.W. Grosser Consulting Engineer & Hydrogeologist, PC
	Ammon Bush	Shumaker Consulting Engineering & Land Surveying, D.P.C.
	Rhonda Cardone	Dewberry
	Robert Cartwright	Stantec Consulting Services Inc.
	Thomas Cascino	AECOM
	Julie Chang	Jacobs
	Nancy Clark	KC Engineering and Land Surveying, P.C.
	John Paul Cunningham	HDR
	Ray Daddazio	Thornton Tomasetti
	Michael De Chiara	Zetlin & De Chiara LLP
	Dino DeFeo	AKF Group LLC
	Cletus Ezenwa	Lu Engineers
	Philip Galbo	Watts Architecture & Engineering, D.P.C.
	Alexa Gangemi	HNTB New York Engineering and Architecture, P.C.
	Peter Gerbasi	LiRo Engineers Inc.
	Craig Hahn	Vachris Engineering, P.C.
	Keith Harlock	WSP USA Inc.
	Maxine Hill	VHB Engineering, Surveying and Landscape Architecture, P.C.
	David Isabelle	STV Group
	Cyrus Izzo	Syska Hennessy Group, Inc.

Shelly Johnston	Creighton Manning Engineering, LLP
Charles Kincaid	JMT of New York, Inc.
James Laurita	Gannett Fleming Engineers and Architects, P.C.
Thomas McLaughlin	HDR
Brian Miller	LaBella Associates, D.P.C.
Michael Morgan	Gannett Fleming Engineers and Architects, P.C.
Andy Narus	Cameron Engineering & Associates, LLP
Patrick Nicoletta	MRB Group, Engineering, Architecture and Surveying, D.P.C.
Karim Palomino	PRIME AE Group of NY
Linda Reardon	NV5
Karl Rohde	Nussbaumer & Clarke, Inc.
Matthew Schooley	Barton & Loguidice, D.P.C.
Shila Shah	AECOM
Mike Shamma	Sam Schwartz Engineering, DPC
Ehab Shehata	Bravo
Lyle Shute	McGoey, Hauser and Edsall Consulting Engineers, D.P.C.
Mitchel Simpler	Jaros, Baum & Bolles
Alex Strassenburgh	Pathfinder Engineers & Architects LLP
Brian Towers	Jaros, Baum & Bolles
Cassandra Wetzel	GZA GeoEnvironmental of New York
Kirk Wilson	Lu Engineers
Rick Zottola	LERA Consulting Structural Engineers

#### ***Nominating Committee***

**Chair:** Raymond Daddazio  
 Thornton Tomasetti  
 120 Broadway  
 New York, NY 10271  
 917-593-9645  
 Rdaddazio@thorntontomasetti.com

**Members:** Thomas Casino            AECOM  
 Mark McAnany            BERGMANN  
 Rich McFadden            Jaros, Baum & Bolles  
 Thomas McLaughlin      HDR

#### ***Construction Safety Committee***

**Chair:** Douglas Glorie  
 STV Group  
 1037 Raymond Blvd., 4<sup>th</sup> Floor  
 Newark, NJ 07102  
 862-327-9810  
 douglas.glorie@stvinc.com

**Members:** Christo Basson            Mott MacDonald  
 Rob Cartwright            Stantec Consulting Services Inc.  
 John Grady                Ravi Engineering and Land Surveying, P.C.  
 Quaiser Hashmi            ATANE Design and Construction Consultants  
 Greg Luger                AECOM  
 Doug Maas                Cosentini Associates – a Tetra Tech Company  
 Wilson Ribadeneira        VHB Engineering, Surveying and Landscape Architecture, P.C.  
 Carl Sall                    WSP USA Inc.  
 Ryan Stecher              Jaros, Baum & Bolles  
 Michael Vardaro            Zetlin & De Chiara LLP

---

**PROFESSIONAL & INDUSTRY DIVISION****Ray Daddazio - Executive Committee Liaison**

---

***Continuing Education Committee*****Co-Chair:**

Phil Galbo  
Watts Architecture & Engineering, D.P.C.  
95 Perry Street, Suite 300  
Buffalo, NY 14203  
716-206-5100  
pgalbo@watts-ae.com

**Co-Chair:**

Konstantinos Syngros  
Langan Engineering, Environmental, Surveying, Landscape  
Architecture and Geology, DPC  
21 Penn Plaza, 360 West 31st Street, 8th Floor  
New York, NY 10001-2727  
ksyngros@langan.com

**Members:**

Eric Alderson	Promark Associated Agencies, Inc.
Julia Dockum	McFarland-Johnson, Inc.
Leo Fernandez	Thornton Tomasetti
Brian Heflich	P.W. Grosser Consulting Engineer & Hydrogeologist, PC
Ramsey Kahi	Lu Engineers
Charles Longsworth	Greenman-Pedersen, Inc.
John McCarthy	Risk Strategies
Jeffrey Messinger	STV Group
Paul Nietzsche	Dewberry
Maki Onodera	Jacobs
Pantelidis	Risk Strategies
Paul Pizzimenti	Haley & Aldrich of New York, LLP
Paul Rouis	Ryan Biggs   Clark Davis Engineering & Surveying, D.P.C.
Robert Trovato	Lilker Associates Consulting Engineers, P.C.
Joseph Viola	WSP USA Inc.

***Council of Chairs Committee*****Chair:**

Raymond Daddazio  
Thornton Tomasetti  
120 Broadway  
New York, NY 10271  
917-593-9645  
Rdaddazio@thorntontomasetti.com

**Members:**

Joseph Amato	Cameron Engineering & Associates, LLP
Thomas Cascino	AECOM
Andrew Ciancia	Langan Engineering, Environmental, Surveying, Landscape Architecture and Geology, DPC
Katherine Dewkett	Dewberry
Charles Gozdziwski	Hardesty & Hanover, LLC
Gregory Kelly	STV Group
Michael Leydecker	Wendel WD Architecture, Engineering, Surveying and Landscape Architecture, P.C.
Orrin MacMurray	C&S Companies
Richard McFadden	Jaros, Baum & Bolles
Thomas McLaughlin	HDR
Robert Radley	T.Y. Lin International Engineering and Architecture, P.C.

Mitchel Simpler  
Linda Shumaker

Jaros, Baum & Bolles  
Shumaker Consulting Engineering & Land Surveying, D.P.C.

### *Design-Build Committee*

#### **Steering Committee**

##### **Chair:**

Bernard McNeilly  
WSP USA Inc.  
One Penn Plaza  
New York, NY 10119  
609-512-3511  
bernie.mcneilly@wsp.com

##### **Vice-Chair:**

Chuck Kohler  
STV Group  
225 Park Avenue South  
New York, NY 10003-1604  
212-777-4400  
chuck.kohler@stvinc.com

Denise Carter  
Ray Daddazio  
Lee Ecker  
Maxine Hill  
Mark Molnar

Greenman-Pedersen, Inc.  
Thornton Tomasetti  
CHA  
VHB Engineering, Surveying and Landscape Architecture, P.C.  
Wendel WD Architecture, Engineering, Surveying and  
Landscape Architecture, P.C.

Chris Sklavounakis  
Philip Thayaparan

HDR  
Prudent Engineering, LLP

##### **Members:**

Sam Anthony  
Frances Arland  
Scott Armstrong  
Tim Andersen  
Charles Bartha  
Ira Beer  
Todd Bergstrom  
Michael Bertollo  
Gerald Bartucci  
Anthony Borrelli  
Bruce Brown  
Kenneth Bruce  
Sergio Callen  
Jeff Carpenter  
Eric Celia  
Adam Chadwick  
Jeff Czajka  
Liam Dalton  
Nick Dandolo  
Michael Debiak  
John Deerkoski  
David DeLuca  
James Feeley  
Cindy Feinberg  
David Field  
Wendy Ho  
Charles Hocking

Erdman Anthony  
Mueser Rutledge Consulting Engineers  
Parsons  
C&S Companies  
P.W. Grosser Consulting Engineer & Hydrogeologist, PC  
GEI Consultants, Inc., P.C.  
PRIME AE Group of NY  
Jaros, Baum & Bolles  
M.G. McLaren, PC d/b/a McLaren Engineering Group  
BERGMANN  
Brown and Caldwell Associates  
Brown and Caldwell Associates  
Atkins  
Parsons  
HNTB New York Engineering and Architecture, P.C.  
Kiewit Engineering (NY) Corp.  
H2M architects + engineers  
HNTB New York Engineering and Architecture, P.C.  
Gannett Fleming Engineers and Architects, P.C.  
Infinite Consulting Corp.  
AECOM  
Hardesty & Hanover, LLC  
Pathfinder Engineers & Architects LLP  
Jacob, Feinberg, Katz & Michaeli Consulting Group  
Mott MacDonald  
AKRF, Inc.  
Hazen and Sawyer

Margaret Hopkins	AKRF, Inc.
Joann Iddon	Arup
Keith Itzler	Dewberry
Darryl Johnson	Gannett Fleming Engineers and Architects, P.C.
Dennis Kennelly	T.Y. Lin International Engineering & Architecture, P.C.
Michael Kennedy	Jacobs
Mike Kling	Atkins
Charles F. King	Urban Engineers of New York, D.P.C.
Maria Lehman	GHD Consulting Services, Inc.
Bruce Lilker	Lilker Associates Consulting Engineers, P.C.
Jessica Mariani	HVEA Engineers
Luke Martinek	Sam Schwartz Engineering, DPC
Elias Matar	LERA Consulting Structural Engineers
Maqbool Mohammed	Stantec Consulting Services Inc.
John Murray	McMillen Jacobs Associates
Andy Narus	Cameron Engineering & Associates, LLP
Tasos Papathanasiou	Langan Engineering, Environmental, Surveying, Landscape Architecture and Geology, DPC
Richard Peters	Hazen and Sawyer
Ray Pinto	Parsons
Raj Ravilla	KC Engineering and Land Surveying
Kirsten Sibilila	Dattner Architects
Gregory Socrates	Lilker Associates Consulting Engineers, P.C.
Sundaram Solai	Greely and Hansen LLC
Jason Stern	Greenman-Pedersen, Inc.
Joan Verbon	Sam Schwartz Engineering, DPC
Carol Wynperle	WSP USA Inc.
Edward Zamiskie	Haley and Aldrich of New York, LLP

***Legal Counsels Forum***

***Staff Liaison: Campbell Wallace, ACEC New York***

**Chair:**

Lina Telese  
Jaros, Baum & Bolles  
80 Pine Street  
New York, NY 10005  
212-530-9300  
Telesel@jbb.com

**Members:**

Robert Banner	Ingram Yuzek Gainem Carroll + Bertolotti LLP
Scott Beratan	HDR
Anjanette Bobrow	Syska Hennessy Group, Inc.
Daniel Boriello	Thornton Tomasetti
Gregg Bundschuh	Greyling Insurance Brokerage
Annalee Cataldo	Kosakoff & Cataldo LLP
Gerry Cavaluzzi	Kennedy/Jenks Consultants and KJ Engineers and Geologists of New York PC
Howard Cohen	AECOM
Kent Collier	Greyling Insurance Brokerage
Audrey Daly	Gannett Fleming Engineers and Architects, P.C.
Michael De Chiara	Zetlin & De Chiara LLP
Joseph Dennis	Arup
Duncan Findlay	GHD Consulting Services, Inc.
Ken Fisher	Cozen O'Connor
Eric Gernant	Ramboll
Elise Greenspan	AECOM

Jared Hand	Langan Engineering, Environmental, Surveying, Landscape Architecture and Geology, DPC
Judith Held	STV Group
Lena Holohan	Arup
Hillary Jassey	WSP USA Inc.
June Kibe	WSP USA Inc.
Charles Kim	ACEC
Michael Klerer	AECOM
Mark Kriss	Kriss Kriss and Brignola
Ellen Laberge	C&S Companies
Harry Makris	Milber Makris Plousadis & Seiden, LLP
John McCarthy	Bolton-St. Johns, LLC
William McCarthy	Bolton-St. Johns, LLC
Barbara McLemore	Gannett Fleming Engineers and Architects, P.C.
Eric Morgenweck	AKRF, Inc.
Colleen Mullaney-Westfall	WSP USA Inc.
Steve Muschiano	PRIME AE Group of NY
Robert Orlin	AECOM
Michael Platt	CHA
Shoshana Rosenberg	WSP USA Inc.
William Rospars	H2M architects + engineers
Lee Sacket	L'Abbate, Balkan, Colavita & Contini, L.L.P.
Sean Schoenborn	BERGMANN
Peter Seiden	Milber Makris Plousadis & Seiden, LLP
Jennifer Smith	C&S Companies
Jeff Stone	Stantec Consulting Services Inc.
Martin Schwartzberg	Marshall Dennehey Warner Coleman & Goggin, P.C.
John Sutphen	Ramboll
Lina Telese	Jaros, Baum & Bolles
Thomas Titsworth	CHA
Michael Vardaro	Zetlin & De Chiara LLP
Stephen Willig	Donovan Hatem LLP
Scott Winikow	Donovan Hatem LLP

### ***Technology Committee***

**Chair:** John DiCamillo  
Arup  
77 Water Street  
New York, NY 10005  
212-896-3000  
john.dicamillo@arup.com

**Members:**

Robert Allen	HDR
Alex Cabrera	AKF Group LLC
Jay Conti	Jaros, Baum & Bolles
Brian Cresenzi	Gannett Fleming Engineers and Architects, P.C.
Jim Dray	Thornton Tomasetti
Rick Gobeille	Stantec Consulting Services Inc.
Gene Irving	Dewberry
Sam Ishak	Langan Engineering, Environmental, Surveying, Landscape Architecture and Geology, DPC
Earl Jones	Dattner Architects
Ritwik Kakati	Dagher Engineering, PLLC
Benjamin Lague	Stantec Consulting Services Inc.

Janice Li	Jacobs
Brent Long	Fisher Associates, P.E., L.S., L.A., D.P.C.
David Long	JMT of New York, Inc.
John McCaffrey	H2M architects + engineers
Emily McKee	PRIME AE Group of NY
Tibor Menyhert	STV Group
Frederick Noel	Syska Hennessy Group, Inc.
Colin O'Gallagher	WSP USA Inc.
Guy Pascarello	AKRF, Inc.
Justin Racelis	Stantec Consulting Services Inc.
Ronald Sattan	Mott MacDonald
Michael Soyfer	Lilker Associates Consulting Engineers, P.C.
Larry Spraker	VHB Engineering, Surveying and Landscape Architecture, P.C.
Patrick Tennant	Lizardos Engineering Associates, P.C.
Jaak Vandensype	HDR
Sean Williams	Citrin Cooperman & Co., LLP

***DEIB Ad-Hoc Committee*** (established June 2021)

**Chair:** Denise Carter  
 Greenman-Pedersen, Inc.  
 325 West Main Street  
 Babylon, NY 11702  
 631-587-5060  
 dcarter@gpinet.com

**Members:** Nancy Clark KC Engineering and Land Surveying, PC  
 Karen Franz AKRF, Inc.  
 Raim Izhar SI Engineering, P.C.  
 Diana Kaufman C&S Companies  
 Christopher LaTuso HDR  
 Ed Watts, Jr. Watts Architecture & Engineering, D.P.C.

---

**COMMUNICATIONS DIVISION****Nancy Clark - Executive Committee Liaison**

---

***Constitution Committee (EXCOM)*****Chair:**

Nancy Clark  
KC Engineering and Land Surveying, PC  
15 Governor Drive, Second Floor  
Newburgh, NY 12550-8337  
845-931-2901  
nclark@kcepc.com

**Members:**

Ray Daddazio	Thornton Tomasetti
Daniel Duprey	CPL
Keith Harlock	WSP USA Inc.
Shelly Johnston	Creighton Manning Engineering, LLP
Brian Miller	LaBella Associates, D.P.C.
Linda Reardon	NV5
Matthew Schooley	Barton & Loguidice, D.P.C.
Rick Zottola	LERA Consulting Structural Engineers

***Engineering Excellence Committee*****Co-Chair:**

Thomas Cascino  
AECOM  
40 British American Blvd., First Floor  
Latham, NY 12110  
518-951-2300  
thomas.cascino@aecom.com

**Co-Chair:**

Luke Martinek  
Sam Schwartz Engineering, DPC  
322 Eighth Avenue, 5th Floor  
New York, NY 10001  
212-598-9010  
lmartinek@samschwartz.com

**Members:**

Steven Abbattista	OLA Consulting Engineers, PC
Reema Albahri	STV Group
Arthur Alzamora	Langan Engineering, Environmental, Surveying, Landscape Architecture and Geology, DPC
Greg Andrus	Lu Engineers
Erich Arcement	Erich Arcement Creative Consulting, Inc.
Christian Arkell	Sam Schwartz Engineering, DPC
Rachel Beer	Sam Schwartz Engineering, DPC
Nicola Belzer	Hardesty & Hanover, LLC
Gillian Blake	Arup
Donyelle Booker	COWI
Dolores Buckenberger	HNTB New York Engineering and Architecture, P.C.
Oscar Bustos	Urban Engineers of New York, D.P.C.
Rick Cardentey	WSP USA Inc.
Rhonda Cardone	Dewberry
Gordon Carrie	Arup
Tom Cascino	AECOM
Tricia Chotilal-Quan Kep	T.Y. Lin International Engineering & Architecture, P.C.
Elias Dagher	Dagher Engineering, PLLC
Christine Dinisi	HDR

Lee Ecker	CHA
Cindy Feinberg	Jacob, Feinberg, Katz & Michaeli Consulting Group
Ellen Friedman	Urban Engineers of New York, D.P.C.
Iris Giboyeaux	STV Group
Peter Helseth	WSP USA Inc.
Martha Huguet	Mueser Rutledge Consulting Engineers
Katherine James	Jacobs
Vijesh Karatt Vellatt	Greeley and Hansen LLC
Timothy Krawetz	Syska Hennessy Group, Inc.
Maxinne Leighton	Jaros, Baum & Bolles
Shravya Markandeya	CHA
Patricia McBride	HDR
Richard Peters	Hazen and Sawyer
Stamatia Petsios	STV Group
Kovid Saxena	Sam Schwartz Engineering, DPC
Thomas Schoettle	CDM Smith
Kamal Shahid	KS Engineers, P.C.
Diana Soldano	Hayduk Engineering, LLC
Marilisa Stigliano	AECOM

***Program Committee***

**Chair:** Rena Barta  
 Parsons  
 100 Broadway  
 New York, NY 10005  
 212-266-8300  
 rena.barta@parsons.com

**Members:**

Richard Amodei	STV Group
John Boule	Dewberry
Cindy Feinberg	Jacob, Feinberg, Katz & Michaeli Consulting Group
Olga Gorbunova	Stantec Consulting Services Inc.
Monica Hatcher	Jacobs
Chris LaTuso	HDR
Bernie McNeilly	WSP USA Inc.
John McSweeney	Greenman-Pedersen, Inc.
Jennifer Michnewicz	CPL
Stamatia Petsios	STV Group
Andrew Sandor	Atkins
Marilisa Stigliano	AECOM

***Public Relations Committee***

**Chair:** Jill Shorter  
 Ryan Biggs | Clark Davis Engineering & Surveying, D.P.C.  
 257 Ushers Road  
 Clifton Park, NY 12065  
 518-406-5506 ext. 301  
 jshorter@ryanbiggs.com

**Members:**

Reema Albahri	STV Group
Judy Beckwith	Lu Engineers
Paige Biancamano	Jacobs
Daniel Colombini	Goldman Copeland Associates, PC
Elias Dagher	Dagher Engineering, PLLC

Christine Dinisi	HDR
Nicole Dzuba	C&S Companies
Michelle Galindez	Syska Hennessy Group, Inc.
Mark Ginocchio	STV Group
Michael Gomez	VN Engineers, PC
Ozgur Gungor	Arup
Peggy Gust-Anger	Foit-Albert Associates, Architecture, Engineering and Surveying, P.C.
Jessie Henschel	Watts Architecture & Engineering, D.P.C.
Molly Hollister	WSP USA Inc.
Ingrid Kaptein	Ravi Engineering and Land Surveying, P.C.
Andrew Sandor	Atkins
Sarabjit Singh	LERA Consulting Structural Engineers

***Recognition Awards Committee***

**Chair:** Christopher LaTuso  
HDR  
500 Seventh Avenue, 15th Floor  
New York, NY 10018  
212-542-6000  
christopher.latuso@hdrinc.com

**Members:**

Elena Barnett	HDR
Ross Brady	Arup
Steve Eget	WSP USA Inc.
Donald Flood	Mott MacDonald
Will Flores	STV Group
Martha Huguet	Mueser Rutledge Consulting Engineers
Maxinne Leighton	Jaros, Baum & Bolles
Michael Leydecker	Wendel WD Architecture, Engineering, Surveying and Landscape Architecture, P.C.
Aileen Maguire Meyer	C&S Companies
Jennifer Michniewicz	CPL
Richard Panchyk	Hardesty & Hanover, LLC
Stephen Rutkey	AECOM
Scott Smith	CHA
Walt Walker	Greeley and Hansen LLC

***Scholarship Committee***

**Chair:** Arthur Alzamora  
Langan Engineering, Environmental, Surveying, Landscape  
Architecture and Geology, DPC  
21 Penn Plaza  
360 West 31 Street, 8<sup>th</sup> Fl  
New York, NY 10001-2727  
212-479-5442  
aalzamora@langan.com

**Vice-Chair:** Peter Young  
Hazen and Sawyer  
498 Seventh Avenue  
New York, NY 10018  
212-777-8400  
pyoung@hazenandsawyer.com

**Members:**

Greg Babino	Greenman-Pedersen, Inc.
Gillian Blake	Arup

Zinb Bouizy	STV Group
Robert Brunner	HDR
Kerrine Bryan	WSP USA
Mark Butcher	Popli, Architects + Engineering & L.S., D.P.C. d/b/a Popli Design Group
Megan Caceres	Syska Hennessy Group, Inc.
Chris Carter	Stantec Consulting Services Inc.
Courtney Clark	Thornton Tomasetti
Elias Dagher	Dagher Engineering, PLLC
Michael DesRochers	Loring Consulting Engineers, Inc.
Julia Dockum	McFarland-Johnson, Inc.
Marc Gallagher	Langan Engineering, Environmental, Surveying, Landscape Architecture and Geology, DPC
Olga Gorbunova	Stantec Consulting Services Inc.
Dejana Harris	STV Group
Gwen Howard	Foit-Albert Associates, Architecture, Engineering and Surveying, P.C.
Wayne Hui	Syska Hennessy Group, Inc.
Christopher LaTuso	HDR
Mary Mazur	Hardesty & Hanover, LLC
Jason Messenger	Lu Engineers
Christina Minkler	JMT of New York, Inc.
Ozlen Ozkurt	Dewberry
Cheryl Petersen	Arup
Paul Pizzimenti	Haley & Aldrich of New York, LLP
John Rossi	Jaros, Baum & Bolles
Eithan Sonnino	AECOM
Joseph Viola	WSP USA Inc.

***Scholarship Fund (separate 501c3):***

<b>Chair:</b>	Arthur Alzamora	Langan Engineering, Environmental, Surveying, Landscape Architecture and Geology, DPC
<b>Vice Chair:</b>	Peter Young	Hazen and Sawyer
<b>Secretary:</b>	Christopher LaTuso	HDR
<b>Treasurer:</b>	John Evers	ACEC New York (Non-voting)
<b>Members:</b>	Elias Dagher	Dagher Engineering, PLLC
	Olga Gorbunova	Stantec Consulting Services Inc.
	Christina Minkler	JMT of New York, Inc.
	Open Seat	TBD

---

**MEMBER SERVICES DIVISION****Brian Miller - Executive Committee Liaison**

---

***Budget & Finance Committee***

**Chair:** Brian Miller  
LaBella Associates, D.P.C.  
300 State Street, Ste 201  
Rochester, NY 14614-1033  
585-454-6110  
bmiller@labellapc.com

**Members:** James Bazata Greenman-Pedersen, Inc.  
Bill Doughty Greenman-Pedersen, Inc.  
Lee Ecker CHA  
Kenneth Ellsworth Keystone Associates Architects, Engineers and Surveyors, LLC  
Cyrus Izzo Syska Hennessy Group, Inc.  
Bernard McNeilly WSP USA Inc.  
Doug Obrist C&S Companies  
Rashid Shariff KS Engineers, P.C.  
Timothy Walck Wendel WD Architecture, Engineering, Surveying and  
Landscape Architecture, P.C.

***Investment Committee***

David Chambers Delta Engineers, Architects & Land Surveyors, DPC  
Daniel Clarke Wells Fargo Bank, N.A.  
Daniel Duprey CPL  
Chuck Kohler STV Group  
Gregory Smith H2M architects + engineers

***Business Practice Committees (2)******1) CFO/Controller Committee***

**Co-Chair:** Robert Brewer  
Grassi Advisors & Accounting  
488 Madison Avenue, 21<sup>st</sup> Floor  
New York, NY 10022  
212-661-6166  
RBrewer@grassicpas.com

**Co-Chair:** Rimma Zaleznik  
Thornton Tomasetti  
120 Broadway  
New York, NY 10271  
917-661-8106  
RZaleznik@ThorntonTomasetti.com

**Members:** Dom Bernardo CHA  
Thomas Butcher STV Group  
James Cahill Watts Architecture & Engineering, D.P.C.  
David Chambers Delta Engineers, Architects, Land Surveyors, & Landscape  
Architects, DPC  
Daniel Clarke Wells Fargo Bank, N.A.  
Ted Cordes CPL  
Louis Curatolo Syska Hennessy Group, Inc.  
Patrick DiCerbo Patrick DiCerbo, Northwestern Mutual

Justin DiLauro	BRAYN Consulting
James Evans	Arup
Dijana Fedyunina	Cerami & Associates, Inc.
Robert Fennessey	HDR
Joseph Ferreira	Albrecht, Viggiano, Zureck & Company, P.C.
Peter Friebe	Lilker Associates Consulting Engineers, P.C.
Richard Maxwell	Barton & Loguidice, D.P.C.
Michael Motyka	WSP USA Inc.
Brian Murphy	CohnReznick LLP
Mubbashir Raham	ATANE Design and Construction Consultants
Vince Reda	Dewberry
Phillip Ross	Anchin, Block & Anchin LLP
Greg Smith	H2M architects + engineers
David Thornhill	AKF Group LLC
Randy Tuthill	C&S Companies
Mary Alice Tyler	B. Thayer Associates
Joan Verbon	Sam Schwartz Engineering, DPC
Anna Volynsky	Hardesty & Hanover, LLC
Shekhar Yadavalli	Langan Engineering, Environmental, Surveying, Landscape Architecture and Geology, DPC

## 2) *Human Resources Committee*

**Chair:** Katherine Metcalfe  
CPL  
205 St. Paul Street, Suite 500  
Rochester, NY 14604  
585-402-7533  
kmetcalfe@cplteam.com

**Co-Chair:** Diana Kaufman  
C&S Companies  
499 Col. Eileen Collins Boulevard  
Syracuse, NY 13212  
315-703-4170  
dkaufman@cscos.com

<b>Members:</b> Matt Alboum	Dewberry
Aisha Alexander	Loring Consulting Engineers, Inc.
Carol Bermingham	Lilker Associates Consulting Engineers, P.C.
Heather Blokzyl	Hunt Engineers, Architects, Land Surveyors & Landscape Architect, DPC
Pamela Buckeye	Dagher Engineering, PLLC
Ruthanne Bulman	McFarland-Johnson, Inc.
Jennifer Carney	GHD Consulting Services, Inc.
Jennifer Chatt	CHA
Mahfuza Chowdhury	HNTB New York Engineering and Architecture, P.C.
Vanessa Cifuentes	Greenman-Pedersen, Inc.
Anne Davis	H2M Architects, Engineers, Land Surveying and Landscape Architecture, DPC-H2M architects + engineers
Andrea Drapeau	Barton & Loguidice, D.P.C.
Aneta Dzepina	SUPERSTRUCTURES Engineers + Architects
Susan Essaf	AECOM
Clodagh Fraccari	Langan Engineering, Environmental, Surveying, Landscape Architecture and Geology, DPC

Carina Gelok	WSP USA Inc.
Sonja Glatzhofer	STV Group
Paul Hermas	TriNet
Vicki Hobson	Syska Hennessy Group, Inc.
Nadia Llanaj	Lilker Associates Consulting Engineers, P.C.
Keith Kiss	Stantec Consulting Services Inc.
Karen Lacroix	AKF Group LLC
Mary Beth Lardaro	Dattner Architects
Aiko Lum	Arup
Amy Marra	CPL
Terry Montague	HDR
Cheryl Petersen	Arup
Ann Reis	Creighton Manning Engineering, LLP
Chad Robertson	Fisher Associates, P.E., L.S., L.A., D.P.C.
Christy Stoebe	Foit-Albert Associates, Architecture, Engineering and Surveying, P.C.
Denise Townsend	Hazen and Sawyer
Liz Uzzo	H2M Architects, Engineers, Land Surveying and Landscape Architecture, DPC-H2M architects + engineers
Jennifer Vella	Ramboll
Teresa Walters	Dewberry

### ***DMWBE Committee***

**Chair:** Cletus Ezenwa  
 Lu Engineers  
 339 East Avenue, Suite 200  
 Rochester, NY 14604  
 585 385-7417  
 cezenwa@luengineers.com

<b>Members:</b> Carla Artis	Stantec Consulting Services Inc.
Jamie Davis	Ryan Biggs   Clark Davis Engineering & Surveying
John Davis	GHD Consulting Services, Inc.
J. Evans Doleyres	JED Engineering, P.C.
Cindy Feinberg	Jacob, Feinberg, Katz & Michaeli Consulting Group
Christine Gayron	GdB Geospatial
Gary Guleria	A.G. Consulting Engineering, P.C.
Julie Harris	Lu Engineers
Jermaine Huell	STV Group
Kai Marion	C&S Companies
Sherazad Mehta	Arup
Sanjay Naik	Naik Consulting Group, P.C.
Nagappa Ravindra	Ravi Engineering and Land Surveying, P.C.
Kamal Shahid	KS Engineers, P.C.
Doreen Taveras	AECOM
Barbara Thayer	B. Thayer Associates
Ed Watts, Jr.	Watts Architecture & Engineering, D.P.C.
Jaimee Wilson	Pathfinder Engineers and Architects
Janine Witko	Arup

---

**GOVERNMENT AFFAIRS I – TRANSPORTATION 1 DIVISION****Linda Reardon - Executive Committee Liaison**

---

***NYC Department of Transportation Committee (NYCDOT)***

**Chair:** Kamal Shahid  
KS Engineers, P.C.  
65 Broadway  
New York, NY 10006  
973-623-2999  
kshahid@kseng.com

**Members:**

Michael Arotis	Dewberry
Pete Bakarich	COWI
Ahmed Bashjawish	Jacobs
Stelios Bertos	Stantec Consulting Services Inc.
Hilary Frost	HNTB New York Engineering and Architecture, P.C.
Quaiser Hashmi	ATANE Design and Construction Consultants
Bryan McDermott	Parsons

***NYC Economic Development Corporation Committee***

**Chair:** Rachel Belsky  
Langan Engineering, Environmental, Surveying, Landscape  
Architecture and Geology, DPC  
21 Penn Plaza, 36 West 31<sup>st</sup> Street, 8<sup>th</sup> Floor  
New York, NY 10001-2727  
212-479-5400  
rbelsky@langan.com

**Members:**

Karen Franz	AKRF, Inc.
Jen Heymach	Greenman-Pedersen, Inc.
Khaled Husein	ATANE Design and Construction Consultants
Michael Liona	Hardesty & Hanover, LLC
Michael Mudalel	MFS Engineers & Surveyors
Tammy Petsios	STV Group
David Quart	VHB Engineering, Surveying and Landscape Architecture, P.C.
Gary Sorge	Stantec Consulting Services Inc.

***Metropolitan Transportation Authority Committees***

**Chair:** Maxine Hill  
VHB Engineering, Surveying and Landscape Architecture, P.C.  
One Penn Plaza, Suite 715  
New York, NY 10119  
212-857-7336  
mhill@vhb.com

**Vice-Chair, B&T:** Maxine Hill VHB

**Vice-Chair, Rail:** Peter Guest Arup

**Vice-Chair, Transit:** Art Alzamora Langan Engineering, Environmental, Surveying and Landscape  
Architecture and Geology, DPC

***MTA Bridges & Tunnels Sub-Committee***

**Members:** Maxine Hill (lead) VHB  
Courtney Clark Thornton Tomasetti  
Keith Eichner Hardesty & Hanover, LLC  
West Lindemuth TRC Companies  
Jay Popli Popli, Architects + Engineering & L.S., D.P.C. d/b/a Popli  
Design Group  
Edward Zamiskie Haley & Aldrich of New York, LLP

***MTA Rail (MNR, LIRR) Sub-Committee***

**Members:** Peter Guest (lead) Arup  
Richard Amodei STV Group  
Ram Boundouki Alta Vista Solutions Engineering Services  
Barbara Thayer B. Thayer Associates  
Joan Verbon Sam Schwartz Engineering, DPC  
Phil Yartey T.Y. Lin International Engineering & Architecture, P.C.

***MTA NYC Transit Sub-Committee***

**Members:** Art Alzamora (lead) Langan Engineering, Environmental, Surveying and Landscape  
Architecture and Geology, DPC  
Frank Facciolo Mott MacDonald  
Jerry Janetti WSP USA Inc.  
Helga Junold ARCADIS  
Sanjay Naik Naik Consulting Group, P.C.  
Jaidev Sankar HNTB New York Engineering and Architecture, P.C.

***NYS Thruway Authority Committee***

**Chair:** Jim Bridges  
M.G. McLaren, PC d/b/a McLaren Engineering Group  
The Patroon Building  
5 Clinton Square, 3rd Floor  
Albany, NY 12207  
518-992-4830 x3439  
jbridges@MGMcLaren.com

**Committee:** Tony Canale Mueser Rutledge Consulting Engineers  
Todd Gadd BERGMANN  
Phil Galbo Watts Architecture & Engineering, D.P.C.  
Steve Godlewski Creighton Manning Engineering, LLP  
Roger Laime AECOM  
Brian Miller LaBella Associates, D.P.C.  
Andy Sandor Atkins  
Matthew Schooley Barton & Loguidice, D.P.C.  
Linda Shumaker Shumaker Consulting Engineering & Land Surveying, D.P.C.

***Port Authority of New York & New Jersey Committee (PANY&NJ)***  
*(joint committee of ACEC New York and New Jersey)*

**New York Chair:** Najib Abboud  
Thornton Tomasetti  
120 Broadway, FL 15  
New York, NY 10271-0061  
212-367-3074  
nabboud@thorntontomasetti.com

<b>NY Committee:</b>	Aakash Badjatya	LERA Consulting Structural Engineers
	Lee Ecker	CHA
	Joshua Nelson	Hatch Associates Consultants Inc.
	Steve Sonmez	Lizardos Engineering Associates, P.C.
	Brendan Weiden	Jaros, Baum & Bolles

*This committee is a joint committee with ACEC New Jersey. Tony Panzarino of Parsons is Vice-Chair of the joint PANYNJ Committee (and is Chair of ACEC New Jersey's PANYNJ Capital Program Delivery Committee)*

***NYS Bridge Authority Committee***

**Chair:** John Paul Cunningham  
HDR  
711 Westchester Avenue #103  
White Plains, NY 10604  
914-993-2000  
johnpaul.cunningham@hdrinc.com

<b>Members:</b>	Phil Bousader	Parsons
	Steve Gauthier	LaBella Associates, D.P.C.
	Quentin Johnson	Modjeski & Masters
	John Simkullet	Greenman-Pedersen, Inc.

---

**GOVERNMENT AFFAIRS II – TRANSPORTATION 2 DIVISION****Keith Harlock - Executive Committee Liaison**

---

***NYS Aviation Committee***

**Chair:** Jeremy Martelle  
CHA  
PO Box 5269, III Winners Circle  
Albany, NY 12205-0269  
518-453-3931  
jmartelle@chacompanies.com

**Members:** Greg Carballada Foit-Albert Associates, Architecture, Engineering and  
Surveying, P.C.  
Kirsten Cerro C&S Companies  
Lisa Cheung Passero Associates, DPC  
Indhira Figuereo WSP USA Inc.  
Matt Gwinn Mott MacDonald  
Stephanie Lehn B. Thayer Associates  
Carol Lurie VHB Engineering, Surveying and Landscape Architecture, P.C.  
Lindsay Maguire Naik Consulting Group, P.C.

***NYS County Highway Superintendents Committee***

**Chair:** Charlie Kincaid  
JMT of New York, Inc.  
307 South Townsend Street  
Syracuse, NY 13202  
315-471-2101  
ckincaid@jmt.com

**Members:** Phillip Galbo Watts Architecture and Engineering DPC  
Ajay Kumar KS Engineers, P.C.  
Joseph Lanaro LaBella Associates, D.P.C.  
Mia Nadasky HVEA Engineers  
Tamer Osman Delta Engineers, Architects, & Land Surveyors, PC  
Dan Savage Passero Associates, DPC  
Matt Smullen CPL

***NYS Parks & Recreation Committee***

**Chair:** Francis Mahaney  
WSP USA Inc.  
50 Lakefront Blvd, Suite 111  
Buffalo, NY 14202  
716-853-1220  
Francis.mahaney@wsp.com

**Members:** Shawn Cowe Foit-Albert Associates, Architecture, Engineering and  
Surveying, P.C.  
Cade Hobbick STV Group  
Sherazad Mehta Arup  
Laura Schwanof GEI Consultants, Inc., P.C.  
James Wilson MP Engineers, P.C.

***Federal Highway Administration (FHWA)***

**Chair:** Oscar Bustos  
Urban Engineers of New York, D.P.C.  
1 Penn Plaza, Suite 4125  
New York, New York 10119  
212-736-9100  
ofbustos@urbanengineers.com

**Members:** Oscar Bustos                      Urban Engineers of New York, D.P.C.  
Ali Chaudhry                              AECOM  
Gabe Cimini                                Stantec Consulting Services Inc.  
Jeff Smithline                              Sam Schwartz Engineering, DPC

***NYS Canals Committee***

**Chair:** Nate Buczek  
T.Y. Lin International Engineering & Architecture, P.C.  
255 East Avenue  
Rochester, NY 14604  
585-512-2000  
nathan.buczek@tylin.com

**Members:** Shelly Johnston                      Creighton Manning Engineering, LLP  
Ken Knutsen                                Barton & Loguidice, D.P.C.  
Glenford Mullings                        Lu Engineers  
Manny Salorio                              CHA  
Dan Thomas                                Greenman-Pedersen, Inc.

***NYS Department of Transportation Committee (NYSDOT)***

**Chair:** Jim Morrissey  
C&S Companies  
499 Col. Eileen Collins Blvd.  
Syracuse, NY 13212  
315-455-2000  
jmorrissey@cscos.com

**Committee:** Ayman Baki                                Tectonic Engineering Consultants, Geologists & Land Surveyors, D.P.C.  
Jane Charalambous                        HDR  
David DeLuca                                Hardesty and Hanover LLC  
Dan Duprey                                  CPL  
Scott Faulkner                                McFarland-Johnson, Inc.  
Christine Gayron                            GdB Geospatial  
John Grady                                    Ravi Engineering and Land Surveying  
A.J. Jannesari                                CDM Smith  
Maria Lehman                                GHD Consulting Services, Inc.  
Mark McAnany                                BERGMANN  
Bill McCormick                                Erdman Anthony

---

**GOVERNMENT AFFAIRS III – VERTICAL 3 DIVISION****Matthew Schooley - Executive Committee Liaison**

---

***Dormitory Authority of the State of New York Committee (DASNY)***

**Chair:** Damian Payne  
Loring Consulting Engineers, Inc.  
360 West 31st Street, 14th Floor  
New York, NY 10001  
646-674-6183  
dpayne@loringengineers.com

**Members:**

Anthony Alduino	Gannett Fleming Engineers and Architects, P.C.
Cindy Feinberg	Jacob, Feinberg, Katz & Michaeli Consulting Group
Rob Kovacs	GHD Consulting Services, Inc.
Nicholas Kumbatovic	Cameron Engineering & Associates LLP
Michael St. John	Erdman Anthony
Tim Treharne	Arup
Jeff Villacres	LERA Consulting Structural Engineers

***New York City Department of Design & Construction Committee (NYCDDC)***

**Chair:** Denise Carter  
Greenman-Pedersen, Inc.  
325 West Main Street  
Babylon, NY 11702  
631-587-5060  
dcarter@gpinet.com

**Vice-Chair:** Vinod Palal  
Goldman Copeland Associates, PC  
229 West 36<sup>th</sup> Street, 7<sup>th</sup> Floor  
New York, NY 10018  
212-868-4660  
vpalal@goldmancopeland.com

**DDC Infrastructure Subcommittee**

Denise Carter (lead)	Greenman-Pedersen, Inc.
Adam Kwartowitz	WSP USA Inc.
William Lipski	KC Engineering and Land Surveying, P.C.
Joe Menzer	NV5
Michael Paterno	ARCADIS
Bob Steele	L.K. McLean Associates, P.C.
Chuck Wachsmuth	D&B Engineers and Architects, P.C.

**DDC Buildings Subcommittee**

Vinod Palal (lead)	Goldman Copeland Associates, PC
Elan Abneri	Bravo
John Galetta	SUPERSTRUCTURES Engineers + Architects
Muhammad Izhar	SI Engineering, P.C.
Jared Krause	Urban Engineers of New York, D.P.C.
Ronald Pezik	LiRo Engineers Inc.

***NYC Housing Authority Committee***

**Chair:** Nick Dandolos  
Gannett Fleming Engineers and Architects, P.C.  
One Penn Plaza, Suite 630  
250 West 34<sup>th</sup> Street  
New York, NY 10119  
212-967-9833 x5210  
ndandolos@gfnet.com

**Members:**

Elias Dagher	Dagher Engineering, PLLC
Tanya de Hoog	Thornton Tomasetti
Robert Ikes III	H2M architects + engineers
Mansoor Khan	Lozier, Inc.
Joseph Masiello	Dewberry
Andrew Narus	Cameron Engineering & Associates LLP
Jeff Terzakis	JMT of New York, Inc.

***NYC School Construction Authority Committee (NYC SCA)***

**Chair:** Kabi Pandey  
Lilker Associates Consulting Engineers, PC  
1001 Avenue of the Americas  
New York, NY 10018-7910  
212-695-1000  
kpandey@lilker.com

**Members:**

Ayman Baki	Tectonic Engineering Consultants, Geologists & Land Surveyors, D.P.C.
Saverio Belfiore	H2M architects + engineers
Paul Boyce	P.W. Grosser Consulting Engineer & Hydrogeologist, PC
Ron Dasgupta	A.G. Consulting Engineering, PC
Wayne Hui	Syska Hennessy Group, Inc.
Ehab Shehata	Bravo
Giuseppe (Joe) Tulumello	Gannett Fleming Engineers and Architects, P.C.

***NYS Office of General Services Committee (NYS OGS)***

**Chair:** Tim Walck  
Wendel WD Architecture, Engineering, Surveying and Landscape Architecture, P.C.  
375 Essjay Road, Suite 200  
Williamsville, NY 14221  
716-688-0766  
twalck@wendelcompanies.com

**Members:**

Ammon Bush	Shumaker Consulting Engineering & Land Surveying, D.P.C.
Thomas Heins	HDR
John Hubert	BERGMANN
Peter Koklanis	M.G. McLaren, PC d/b/a McLaren Engineering Group
Chris Kopec	McFarland-Johnson, Inc.
Jack Robson	Foit-Albert Associates, Architecture, Engineering and Surveying, P.C.
Otto Schwartz	Ryan Biggs   Clark Davis Engineering & Surveying, D.P.C.

***State University Construction Fund Committee (SUCF)***

**Chair:** Dirk Anderson  
Lizardos Engineering Associates. P.C  
200 Old Country Road | Suite 670  
Mineola, NY, 11501  
516-484-1020 x282  
Dirk.Anderson@leapc.com

**Members:**

Robert Accosta	Arup
Tom Lucey	Fisher Associates, P.E., L.S., L.A., D.P.C.
Matt Meyer	Pathfinder Engineers & Architects LLP
Zachary Steiner	Lilker Associates Consulting Engineers, P.C.
Ed Watts, Jr.	Watts Architecture & Engineering, D.P.C.

---

**GOVERNMENT AFFAIRS IV – ENVIRONMENTAL/ENERGY 4 DIVISION****Shelly Johnston - Executive Committee Liaison**

---

***US Army Corps of Engineers Committee***

**Chair:** John Bilotta  
Syska Hennessy Group, Inc.  
1185 Avenue of the Americas  
New York, NY 10036  
212-921-2300  
jbilotta@syska.com

**Committee:** Sarah Cwikla Stantec Consulting Services Inc.  
Heather Morgan AECOM  
Julie Pietrzak Thornton Tomasetti  
Jim Wenck GHD Consulting Services, Inc.  
Neal Wright STV Group

***NYC Department of Environmental Protection Committee***

**Chair:** Paul Storella  
AECOM  
605 Third Avenue  
New York, NY 10158  
212-973-2900  
Paul.storella@aecom.com

**Committee:** Sue Bayat EnTech Engineering  
Doug Cole PRIME AE Group of NY  
Christina (Tina) Colgan Jacobs  
Jennifer Franco AKRF, Inc.  
Sachin Gajwani Brown and Caldwell Associates  
Emory Lee Ramboll  
Michael Nilson Langan Engineering, Environmental, Surveying, Landscape  
Architecture and Geology, DPC  
Sundaram Solai Greeley and Hansen LLC  
Matthew Valade Hazen and Sawyer

***NYS Department of Environmental Conservation Committee***

**Chair:** Lisa Dolphin  
Shumaker Consulting Engineering & Land Surveying, D.P.C.  
143 Court Street  
Binghamton, NY 13901  
607-798-8081  
ldolphin@shumakerengineering.com

**Members:** Tom Drachenberg Parsons  
Katie Hoek Hazen & Sawyer  
Christopher McDermott TRC Companies  
Scott Nostrand Barton & Loguidice, D.P.C.  
Michael Paterno ARCADIS  
Michael Ritchie Costich Engineering, D.P.C.  
Sam Stamps C&S Companies

***NYS Environmental Facilities Corporation Committee***

**Chair:** Greg Cummings  
Larson Design Group  
1 West Market Street, 3rd Floor, Suite 401  
Corning, NY 14830  
607-936-7076  
gmc@larsondesigngroup.com

**Members:** Robert Conway HNTB New York Engineering and Architecture, P.C.  
Robert Klavoon Wendel WD Architecture, Engineering, Surveying and  
Landscape Architecture, P.C.  
Mike Miller CHA

***Energy Committee***

**Chair:** David Pollicino  
Cameron Engineering & Associates, LLP  
177 Crossways Park Drive  
Woodbury, NY 11797  
516-660-1338  
dpollicino@cameronengineering.com

**Members** Bill Bishop Pathfinder Engineers & Architects LLP  
Ernie Iannucci H2M architects + engineers  
Robert Ioanna Syska Hennessy Group, Inc.  
Christopher Korzenko CDM Smith  
Dan Sergison P.W. Grosser Consulting Engineer & Hydrogeologist, PC  
Bruce Tashjian C&S Companies  
James Wenck GHD Consulting Services, Inc.

***New York Power Authority Committee (NYPA)***

**Chair:** Larry Martin  
Ramboll  
333 W. Washington Street, PO Box 4873  
Syracuse, NY, 13221  
315-956-6241  
larry.martin@ramboll.com

**Members:** Elias Dagher Dagher Engineering, PLLC  
Joe Engels GEI Consultants, Inc., P.C.  
Bruce Howie HDR  
Nabeel Mishalani CDM Smith

If you have any changes or corrections to this list, please email Tina Deale at [tina@acecny.org](mailto:tina@acecny.org).