



State Committees

August 1, 2018 – July 31, 2019

Committees are the backbone of ACEC New York, through which much of the work of the organization gets done—work that affects all aspects of the engineering profession, from legislative advocacy to environmental issues.

Committees offer more than a significant opportunity to impact the professional environment:

- *Committee work is often highly educational and interactive.*
- *Members share information that can improve their business practices and help make their firms more profitable and successful, and their efforts support the industry as a whole.*
- *Committee involvement is a great way to build connections with people throughout the organization and the entire industry.*

As you can see on the following pages, there is an ACEC New York committee for virtually every interest, and each one is important. If you are interested in serving on a committee, please sign up through your firm when participation forms are issued to the main contact at each member firm in the Spring.

Table of Contents

ACEC New York Organizational Chart	4
Legislative Affairs Division/Thomas Cascino, Executive Committee Liaison	
<i>Emerging Leaders Committee</i>	5
<i>Legislative Committee</i>	5
<i>Federal Committee/ACECPAC</i>	7
<i>Nominating Committee</i>	7
<i>Standards of Practice Committee</i>	8
Professional & Industry Division/Thomas McLaughlin, Executive Committee Liaison	
<i>Construction Liaison Committee</i>	9
<i>Continuing Education Committee</i>	9
<i>Council of Chairs Committee</i>	10
<i>Design-Build Committee</i>	10
<i>Legal Counsels Forum</i>	11
<i>Technology Committee</i>	12
Communications Division/David Taillon, Executive Committee Liaison	
<i>Constitution Committee</i>	13
<i>Engineering Excellence Committee</i>	13
<i>International Committee</i>	14
<i>Program Committee</i>	14
<i>Public Relations Committee</i>	14
<i>Recognition Awards Committee</i>	15
<i>Scholarship Committee</i>	15
Member Services Division/Gregory Cummings, Executive Committee Liaison	
<i>Budget & Finance Committee</i>	17
<i>Business Practice Committees:</i>	
1) <i>CFO/Controller Committee</i>	17
2) <i>Human Resources</i>	18
3) <i>Insurance Committee</i>	18
<i>DMWBE Committee</i>	19
<i>Membership Committee</i>	19
Government Affairs I – Transportation Division/William McCormick, Executive Committee Liaison	
<u>NYC Department of Transportation Committee</u>	20
<i>NYS Aviation Committee</i>	20
<u>NYS Bridge Authority Committee</u>	20
<u>NYS County Highway Superintendents Committee</u>	21
<u>NYS Department of Transportation Committee</u>	21
<u>NYS Parks & Recreation Committee</u>	21
<u>NYS Thruway Authority Committee</u>	22
<u>Federal Highway Administration</u>	22
Government Affairs II – Transportation/Environmental Division	
Charlie Manning, Executive Committee Liaison	
<u>Metropolitan Transportation Authority Committee</u>	23
<u>MTA Bridges & Tunnels</u>	23

Table Contents

<u>MTA Rail(MNR, LIRR)</u>	23
<u>MTA NYC Transit</u>	23
<u>NYC Department of Environmental Protection Committee</u>	23
<u>NYC Economic Development Corporation Committee</u>	24
<u>NYS Canal Corps Committee</u>	24
<u>NYS Department of Environmental Conservation Committee</u>	25
<u>NYS Environmental Facilities Corporation Committee</u>	25
<u>Port Authority of New York & New Jersey Committee</u>	25
<u>US Army Corps of Engineers Committee</u>	26

Government Affairs III – Buildings and Energy Division

Rick Zottola, Executive Committee Liaison

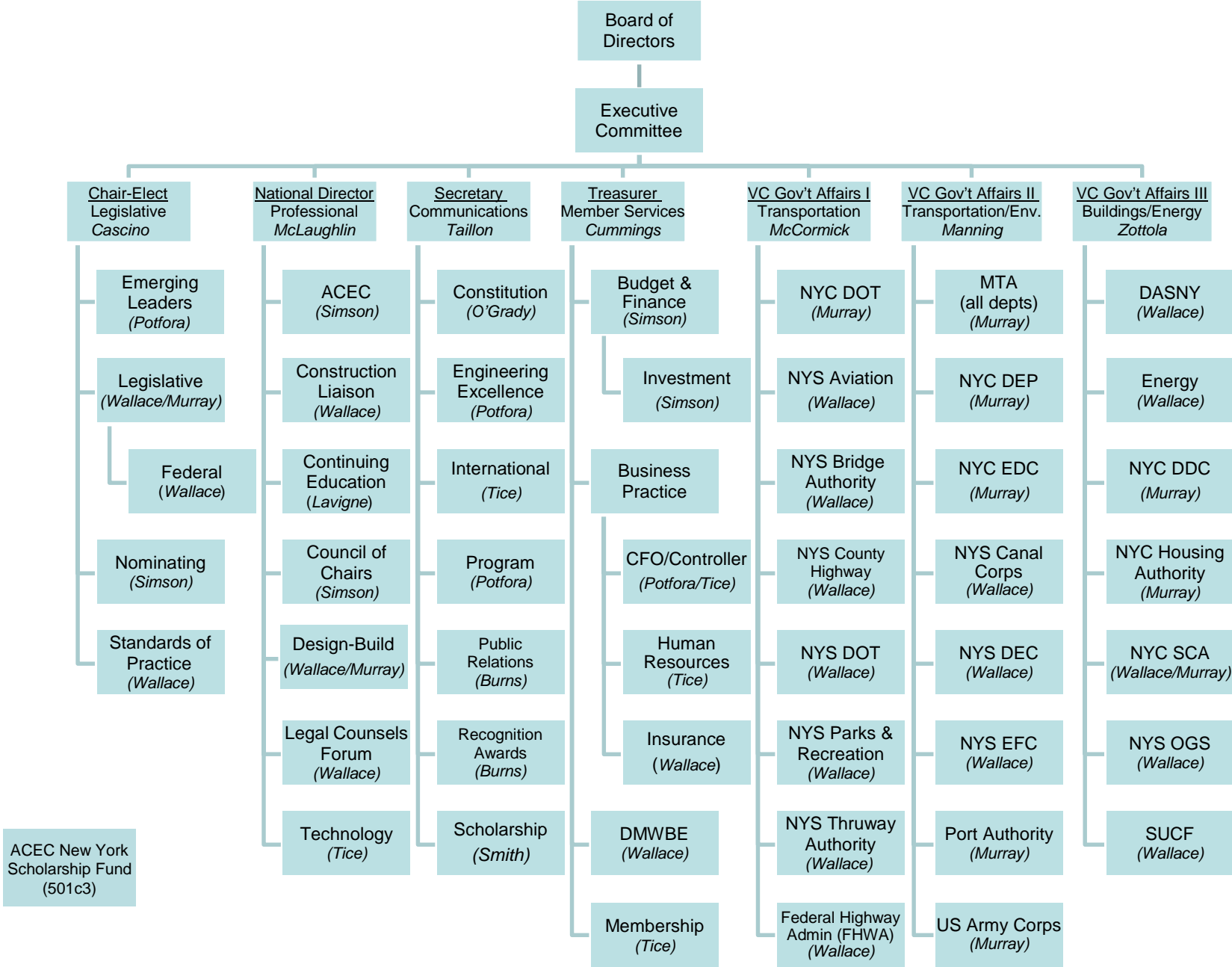
<u>Dormitory Authority of the State of New York Committee</u>	27
<u>Energy Committee</u>	27
<u>NYC Department of Design & Construction Committee</u>	27
<u>NYC Housing Authority Committee</u>	28
<u>NYC School Construction Authority Committee</u>	28
<u>NYS Office of General Services Committee</u>	28
<u>State University Construction Fund Committee</u>	28

<u>Scholarship Fund Committee (separate 501c3)</u>	29
--	----

Ad Hoc Committee(s)

<u>Ad Hoc MWBE Committee (established Nov. 2017)</u>	29
--	----

ACEC New York 2018-2019 Committee Organizational Chart



LEGISLATIVE AFFAIRS DIVISION**Thomas Cascino - Executive Committee Liaison**

Emerging Leaders Committee

Chair: Christopher LaTuso
HDR
500 Seventh Avenue, 15th Floor
New York, NY 10018
212-542-6000
christopher.latuso@hdrinc.com

Vice-Chair: Alexandra Gore
WSP USA
One Penn Plaza
New York, NY 10119
212-631-3761
Alexandra.Gore@wsp.com

Members:

Donyelle Booker	COWI
Oscar Bustos	Urban Engineers of New York, D.P.C.
Benjamin Cornelius	LERA
William Dungo	VHB Engineering, Surveying and Landscape Architecture, P.C.
Cindy Feinberg	Jacob, Feinberg, Katz, & Michaeli Consulting Group
Jared Green	Langan Engineering, Environmental, Surveying and Landscape Architecture and Geology, DPC
Margaret Hopkins	AKRF, Inc.
Rob Ioanna	Syska Hennessy Group, Inc.
David Jones	COWI
Ryan Manderbach	Langan Engineering, Environmental, Surveying and Landscape Architecture and Geology, DPC
Luke Martinek	Sam Schwartz Engineering, DPC
Martin Meriwether	P.W. Grosser Consulting Engineer & Hydrogeologist, PC
Christina Minkler	JMT of New York, Inc.
Michael Putnam	Lilker Associates Consulting Engineers, P.C.
Chris Pollock	Arup
Brendan Smith	WSP USA
Greg Sprich	Stantec Consulting Services Inc.

Legislative Committee

Chair: Daniel Duprey
CPL
205 St. Paul Street, Suite 500
Rochester, NY 14604
585-454-7600
dduprey@cplteam.com

Members:

Joseph R. Amato	Cameron Engineering & Associates, LLP
Richard Amodei	STV Group
Nick Anastasi	P.W. Grosser Consulting Engineer & Hydrogeologist, PC
B. Dean Angelakos	CHA
Victoria Arbitrio	Gilsanz Murray Steficek, LLP
Jeanette Baiardi	AKF Group LLC
James Baker	Foundation Design PC
Robert A. Banner	Ingram Yuzek Gainen Carroll + Bertolotti LLP
Rena Barta	Jacobs
Robert Bilyo	Fisher Associates, P.E., L.S., L.A., D.P.C.

John F. Brusa Jr.	Barton & Loguidice, D.P.C.
Kumar Buvanendaran	KB Engineering, PC, a member of PRIMEAE Group
Robert Cartwright	Stantec Consulting Services Inc.
Joseph Celentano	Land Design Associates-Engineering, Surveying & Landscape Architecture, DPC
Phil Collin	HNTB
James Crandall	Gannett Fleming Engineers, P.C.
Tom Curran	Stantec Consulting Services Inc.
Raymond Daddazio	Thornton Tomasetti
John Deerkoski	AECOM
Frank DelSignore	CHA
Robert Ervolina	TriState Planning Engineering and Land Surveying, P.C.
Francois Fayad	Hinman Consulting Engineers
Donald Fletcher	Barton & Loguidice, D.P.C.
Matthew Millea	C&S Companies
Brett Gough	Ames & Gough, Inc.
Charles Gozdziwski	Hardesty & Hanover, LLC
Ariganjan (Gary) Guleria	A.G. Consulting Engineering, PC
Douglas R. Halstrom	L'Abbate, Balkan, Colavita & Contini, L.L.P.
Peter Heretakis	TriState Planning Engineering and Land Surveying, P.C.
Richard Horstmann	KS Engineers, P.C.
Robert Hutteman	Lu Engineers
Greg Hutter	Popli Design Group
Jerry Jannetti	WSP USA
Cawsie Jijina	Severud Associates Consulting Engineers P.C.
Walter Kaeck	Mueser Rutledge Consulting Engineers
Bernie Kalus	WSP USA
Charles King	Urban Engineers of New York, D.P.C.
Mark Lang	AECOM
James Laurita	Gannett Fleming Engineers, P.C.
Gary Loesch	H2M Architects, Engineers, Land Surveying and Landscape Architecture, DPC dba H2M architects + engineers
Jeffrey C. Lookup	Morrissey Goodale, LLC
Orrin B. MacMurray	C&S Companies
Barry Marin	Friedman LLP
Michael Marino	Nussbaumer & Clarke, Inc.
Mark McAnany	Bergmann Associates, D.P.C.
William McCormick	Erdman Anthony
James McDuffee	Delta Engineers, Architects, & Land Surveyors, PC
Thomas McLaughlin	HDR
Brian Miller	LaBella Associates, D.P.C.
Sanjay Naik	Naik Consulting Group, P.C.
Andrew Narus	Cameron Engineering & Associates, LLP
Nigel Nicholls	Arup
Karim Palomino	KB Engineering, PC, a member of PRIMEAE Group
Richard Peters	Hazen and Sawyer
Tricia QuanKep	T.Y. Lin International Engineering & Architecture, P.C.
Milo Rivero	STV Group
John Robson	Foit-Albert Associates, Architecture, Engineering and Surveying, P.C.
Lorenzo Rotoli	Fisher Associates, P.E., L.S., L.A., D.P.C.
Lee Sackett	L'Abbate, Balkan, Colavita & Contini, L.L.P.
Thomas Schoettle	CDM Smith
Samuel Schwartz	Sam Schwartz Engineering, DPC
Martin Schwartzberg	Marshall Dennehey Warner Coleman & Goggin, P.C.
Jerry Sentz	Foit-Albert Associates, Architecture, Engineering and Surveying, P.C.

Linda Shumaker	Shumaker Consulting Engineers & Land Surveyors, D.P.C.
Julie Stein	HDR
Ram Tirumala	Distinct Engineering Solutions, Inc.
John Trimble	C&S Companies
Mark Tytka	WSP USA
Genaro Velez	COWI
Richard Venvertloh	LaBella Associates, D.P.C.
Brian White	OBG

Federal Sub-Committee/ACEC PAC

Chair: Thomas Cascino
AECOM
40 British American Boulevard, First Floor
Latham, NY 12110
518-951-2200
thomas.cascino@aecom.com

Member: Geoffrey Baldwin	CDM Smith
Christopher Bond	Hunt Engineers, Architects & Land Surveyors, P.C.
Ray Daddazio	Thornton Tomasetti
Jamie Davis	Ryan-Biggs Clark Davis Engineering & Surveying
Lee Ecker	CHA
Francois Fayad	Hinman Consulting Engineers
Charles Gozdziwski	Hardesty & Hanover, LLC
Jim Hirani	Hirani Engineering & Land Surveying, P.C.
Jeffrey Lookup	Morrissey Goodale, LLC
Charlie Manning	Parsons Corporation
Thomas McLaughlin	HDR
Brian Miller	LaBella Associates, P.C.
Fotios Papamichael	Gannett Fleming Engineers, P.C.
Karl Rohde	Nussbaumer & Clarke, Inc.
Lorenzo Rotoli	Fisher Associates, P.E., L.S., L.A., D.P.C.
Timothy Walck	Wendel

Nominating Committee

Chair: Thomas McLaughlin
HDR
404 Airport Executive Park
Nanuet, NY 10954
845-735-8300
thomas.mclaughlin@hdrinc.com

Members: Joseph Amato	Cameron Engineering & Associates, LLP
Charles Gozdziwski	Hardesty & Hanover, LLC
Mark McAnany	Bergmann Associates, D.P.C.

Standards of Practice Committee

Chair: Antoine AbiDargham
AECOM
125 Broad Street, 15th Floor
New York, NY 10004
212-377-8400
antoine.abidargham@aecom.com

Members:

Tim Barnard	Gilsanz Murray Steficek, LLP
Paul Boyce	P.W. Grosser Consulting Engineer & Hydrogeologist, PC
Mark Drozdov	BSI Services And Solutions (NYC Inc.) formerly Creative Environment Solutions (CES Corp)
Robert Ioanna	Syska Hennessy Group, Inc.
Nigel Nicholls	ARUP
Danny Van Roosendaal	McMillen Jacobs Associates

PROFESSIONAL & INDUSTRY DIVISION
Thomas McLaughlin - Executive Committee Liaison

Construction Liaison Committee

Staff Liaison: Campbell Wallace
ACEC New York
6 Airline Drive
Albany, NY 12205
518-452-8611
campbell@acecny.org

Members:	Rebecca Ashton	WSP USA
	Joe Basel	Gilsanz Murray Steficek, LLP
	Beth Barton	Jaros, Baum & Bolles
	Jared Green	Langan Engineering, Environmental, Surveying and Landscape Architecture and Geology, DPC
	Louis Licameli	Lilker Associates Consulting Engineers, P.C.
	Christopher McDermott	AECOM
	Peter Pappas	HNTB New York Engineering and Architecture, P.C.
	Michael Paterno	AKRF, Inc.
	Thomas Pursel	Gannett Fleming Engineers, P.C.
	Tom Rice	ARUP
	Dan Savage	Passero Associates
	Steven Scaglione	HDR
	Hiroshi Shirako	LERA
	Moe Soliman	Naik Consulting Group, P.C.
	Jason Stern	Greenman-Pedersen Inc.
	Andrew Taylor	Erdman Anthony

Continuing Education Committee

Chair: Mark Lang
AECOM
257 West Genesee Street, Suite 400
Buffalo, New York 14202-2657
716-923-1208
mark.lang@aecom.com

Members:	Eric Alderson	Promark Associated Agencies, Inc.
	David Drozdov	BSI Services And Solutions (NYC Inc.) formerly Creative Environment Solutions (CES Corp)
	Mark Drozdov	BSI Services And Solutions (NYC Inc.) formerly Creative Environment Solutions (CES Corp)
	Richard "Gig" Elliott	Beardsley Design Associates, Architecture, Engineering & Landscape Architecture, D.P.C.
	Francois Fayad	Hinman Consulting Engineers
	Leo Fernandez	Thornton Tomasetti
	Michael Hollowood	CHA
	Michelle Kohn	Arup
	Rick Loewenstein	CHA
	Maki Onodera	Jacobs
	Paul Paparella	Mott MacDonald
	Paul Rouis	Ryan Biggs Clark Davis Engineering & Surveying, D.P.C.
	Mary-Beth Rumble	Poole Professional-New York
	Konstantinos Syngros	Langan Engineering, Environmental, Surveying and Landscape Architecture and Geology, DPC

Robert Trovato
Joe Viola

Lilker Associates Consulting Engineers, P.C.
WSP USA

Council of Chairs Committee

Chair: Thomas McLaughlin
HDR
404 Airport Executive Park
Nanuet, NY 10954
845-735-8300
Thomas.mclaughlin@hdrinc.com

Members:

Joseph Amato	Cameron Engineering & Associates, LLP
Andrew Ciancia	Langan Engineering, Environmental, Surveying and Landscape Architecture and Geology, DPC
Katherine Dewkett	Dewberry
Gregory Kelly	WSP USA
Michael Leydecker	Wendel WD Architecture, Engineering, Surveying and Landscape Architecture, P.C.
Gary Loesch	H2M architects + engineers
Neil Lucey	WSP USA
Orrin MacMurray	C&S Companies
Richard McFadden	Jaros, Baum & Bolles
Robert Radley	T.Y. Lin International
Mitchel Simpler	Jaros, Baum & Bolles
Linda Shumaker	Shumaker Consulting Engineering & Land Surveying, D.P.C.

Design-Build Committee

Chair: Milo Rivero
STV Group
225 Park Avenue South
New York, NY 10003-1604
646-602-5849
milo.rivero@stvinc.com

Members:

Sam Anthony	Erdman Anthony
Scott Armstrong	Parsons Corporation
Todd Bergstrom	KB Engineering, PC a member of Prime AE Group
Michael Bertollo	Jaros, Baum & Bolles
Anthony Borrelli	Bergmann Associates, D.P.C.
Kenneth Bruce	Brown & Caldwell Associates
Denise Carter	Greenman-Pedersen, Inc.
Liam Dalton	HNTB New York Engineering and Architecture, P.C.
John Deerkoski	AECOM
Ray Daddazio	Thornton Tomasetti
Lee Ecker	CHA
Charles Hocking	Hazen and Sawyer
Margaret Hopkins	AKRF, Inc.
Joann Iddon	ARUP
Dennis Kennelly	T.Y. Lin International Engineering & Architecture, P.C.
Bernie McNeilly	WSP USA
Mark Molnar	Wendel WD Architecture, Engineering, Surveying and Landscape Architecture, P.C.
Andy Narus	Cameron Engineering & Associates, LLP
Tasos Papathanasiou	Langan Engineering, Environmental, Surveying and Landscape Architecture and Geology, DPC

Wayne Repich	Enovate Engineering, LLC
Chris Sklavounakis	HDR
Philip Thayaparan	Prudent Engineering, LLP
Joan Verbon	Sam Schwartz Engineering, DPC

Legal Counsels Forum

Chair: Jeanette Baiardi
AKF Group LLC
One Liberty Plaza
165 Broadway, 22nd floor
New York, NY 10006
212-354-5656
jbaiardi@akfgroup.com

Members:	Robert Banner	Ingram Yuzek Gainem Carroll + Bertolotti LLP
	Scott Beratan	HDR
	Mark Bloom	Arent Fox LLP
	Anjanette Bobrow	Syska Hennessy Group, Inc.
	David Boren	PG Genatt Group, LLC
	Daniel Borriello	Thornton Tomasetti
	Gregg Bundschuh	Greyling Insurance Brokerage
	Annalee Cataldo-Barile	Sinnreich, Kosakoff & Messina, LLP
	Gerry Cavaluzzi	ARCADIS
	Howard Cohen	AECOM
	Kent Collier	Greyling Insurance Brokerage
	Michael De Chiara	Zetlin & De Chiara LLP
	Joseph Dennis	Arup
	Ken Fisher	Cozen O'Connor
	Elise Greenspan	AECOM
	Judith Held	STV Group
	Lena Holohan	Arup
	Meryle Kaleda	ATANE Consulting
	June Kibe	WSP USA
	Charles Kim	ACEC
	Michael Klerer	AECOM
	Mark Kriss	Kriss Kriss and Brignola
	Ellen Laberge	C&S Companies
	Harry Makris	Milber Makris Plousadis & Seiden, LLP
	John McCarthy	Bolton-St. Johns, LLC
	William McCarthy	Bolton-St. Johns, LLC
	Barbara McLemore	Gannett Fleming Engineers, P.C.
	Eric Morgenweck	AKRF, Inc.
	Colleen Mullaney-Westfall	Ecology and Environment Engineering, P.C.
	Robert Orlin	AECOM
	Douglas Pintauro	L'Abbate, Balkan, Colavita & Contini, L.L.P.
	Michael Platt	CHA
	Shoshana Rosenberg	WSP USA
	Andrew Ross	Arent Fox LLP
	Lee Sackett	L'Abbate, Balkan, Colavita & Contini, L.L.P.
	Martin Schwartzberg	Marshall Dennehey Warner Coleman & Goggin, P.C.
	Peter Seiden	Milber Makris Plousadis & Seiden, LLP
	Jonathan Sinnreich	Sinnreich Kosakoff & Messina, LLP
	Jennifer Smith	C&S Companies
	Jeff Stone	Stantec Consulting Services Inc.

John Sutphen	OBG
Lina Telese	Jaros, Baum & Bolles
Thomas Titsworth	CHA
Nicholas Toumbekis	PG Genatt Group, LLC
Michael Vardaro	Zetlin & De Chiara LLP
Kajja Wadsworth	CPL
Brent Walters	STV Group
Scott Winikow	Donovan Hatem LLP
Michael Zetlin	Zetlin & De Chiara LLP

Technology Committee

Staff Liaison: Rory Tice
 ACEC New York
 6 Airline Drive
 Albany, NY 12205
 518-452-8611
 rory@acecnyc.org

Members:	Robert Allen	HDR
	Alex Cabrera	AKF Group LLC
	John DiCamillo	Arup
	Steve Famularo	COWI
	Peter Grieco Po	AECOM
	Kwok	Gilsanz Murray Steficek, LLP
	Benjamin Lague	Stantec Consulting Services Inc.
	Miguel Lopez	Gilsanz Murray Steficek, LLP
	Tibor Menyherth	STV Group
	Guy Pascarello	Syska Hennessy Group, Inc.
	James Tam	Gilsanz Murray Steficek, LLP

COMMUNICATIONS DIVISION**David Taillon - Executive Committee Liaison**

Constitution Committee

Chair: David Taillon
CHA
PO Box 5269, 111 Winners Circle
Albany, NY 12205-0269
518-453-4701
DTaillon@chacompanies.com

Members:

Thomas Cascino	AECOM
Gregory Cummings	Larson Design Group
Charles Manning	Parsons
William McCormick	Erdman Anthony
Richard McFadden	Jaros, Baum & Bolles
Thomas McLaughlin	HDR
Richard (Rick) Zottola	LERA

Engineering Excellence Committee

Co-Chair: Anthony M. Arbore
Jaros, Baum & Bolles
80 Pine Street
New York, NY 10005
212-530-9300
arborea@jbb.com

Co-Chair Linda Reardon
NV5
32 Old Slip
New York, NY 10005
212-741-8090
Linda.Reardon@nv5.com

Members:

Steven Abbattista	OLA Consulting Engineers
Reema Albahari	M & J Engineering, P.C.
Arthur Alzamora	Langan Engineering Environmental, Surveying and Landscape Architecture and Geology, DPC
Erich Arcement	Erich Arcement Creative Consulting, Inc.
Nicola Belzer	Hardesty & Hanover, LLC
Donyelle Booker	COWI
Oscar Bustos	Urban Engineers of New York, D.P.C.
Rick Cardentey	WSP USA
Elias Dagher	Dagher Engineering, PLLC
Lee Ecker	CHA
Cindy Feinberg	Jacob, Feinberg, Katz & Michaeli Consulting Group
Ellen Friedman	Urban Engineers of New York, D.P.C.
Martha Huguet	Mueser Rutledge Consulting Engineers
Cawsie Jijina	Severud Associates Consulting Engineers
Timothy Krawetz	Syska Hennessy Group, Inc.
Maxinne Leighton	Jaros, Baum & Bolles
Luke Martinek	Sam Schwartz Engineering, DPC
Patricia McBride	HDR
Anthony Montalto	Jaros, Baum & Bolles
Fotios Papamichael	Gannett Fleming Engineers, P.C.
Richard Peters	Hazen and Sawyer

Tricia QuanKep
Kovid Saxena
Beth Zall

TY Lin International Engineering & Architecture, P.C.
Sam Schwartz Engineering, DPC
WSP USA

Program Committee

Chair: TBD

Members: George Leventis Langan Engineering, Environmental, Surveying and Landscape
Architecture and Geology, DPC
Maki Onondera Jacobs
Jorge Pacas Mott MacDonald
Jessica Salmoiraghi ACEC
Kamal Shahid KS Engineers, P.C.
Richard Zottola LERA

Program Committee

Staff Liaison: Gina Potfora
ACEC New York
6 Airline Drive
Albany, NY 12205
518 452 8611
Gina@acecnyc.org

Members: Dean Angelakos CHA
Denise Carter Greenman-Pedersen, Inc.
Chris LaTuso HDR
Bernie McNeilly WSP USA
Jennifer Michniewicz Clark Patterson Lee

Public Relations Committee

Chair: Jill Bonamusa
STV Group
225 Park Avenue South
New York, NY 10003-1604
212-777-4400
jill.bonamusa@stvinc.com

Members: Reema Albahri M & J Engineering, P.C.
Carla Artis Stantec Consulting Services Inc.
Elias Dagher Dagher Engineering, PLLC
Kelsey Eichhorn Arup
Francois Fayad Hinman Consulting Engineers
Phillip Galbo Watts Architecture & Engineering, D.P.C.
Michelle Galindez Syska Hennessy Group, Inc.
Jared Green Langan Engineering, Environmental, Surveying and Landscape
Architecture and Geology, DPC
Leslie Jenkins Jacobs
Tom Malcolm WSP USA

Raymond Daddazio	Thornton Tomasetti
Michael DesRochers	Loring Consulting Engineers, Inc.
Mark Drozdov	BSI Services And Solutions (NYC Inc.) formerly Creative Environment Solutions (CES Corp)
Marc Gallagher	Langan Engineering, Environmental, Surveying and Landscape Architecture and Geology, DPC
Greg Hutter	Popli, Architects + Engineering & L.S., D.P.C. d/b/a Popli Design Group
Jenny Kapelyan	WSP USA
Christina Minkler	JMT of New York, Inc.
Nabeel Mishalani	CDM Smith
Einah Pelaez	HDR
James Regan	Syska Hennessy Group, Inc.
Amir Rizavi	VHB Engineering, Surveying and Landscape Architecture, P.C.
Maike Rodriguez	Infrastructure Engineering, Inc., P.C.
Linda Rosenberg	STV Group
Brian Towers	Jaros, Baum & Bolles
Joseph Viola	WSP USA
Jonathan Watts	Watts Architecture & Engineering, D.P.C.
Cassandra Wetzel	GZA GeoEnvironmental of New York
Alexander Wright	WSP USA
Peter Young	Hazen and Sawyer

MEMBER SERVICES DIVISION**Gregory Cummings - Executive Committee Liaison**

Budget & Finance Committee

Chair: Gregory Cummings
Larson Design Group
1 West Market Street, 3rd Floor, Suite 401
Corning, NY 14830
607-936-7076
gmc@larsondesigngroup.com

Members:

Mike Anderson	AECOM
Vicki Arbitrio	Gilsanz Murray & Steficek, LLP
Jason Bellis	Larson Design Group
Thomas Cascino	AECOM
Joseph Celentano	Land Design DPC
Keith Harlock	WSP USA
Cyrus Izzo	Syska Hennessy Group, Inc.
Shelly Johnston	CME Engineering Group, PLLC
Chris Latreille	Ryan Biggs Clark Davis Engineering & Surveying, D.P.C.
Richard McFadden	Jaros, Baum and Bolles
Alex Strassenburgh	Pathfinder Engineers & Architects LLP

Business Practice Committees (3)***1) CFO / Controller Committee***

Co-Chair: Joshua Anderson
Workplace Retirement Group of Raymond James
4 Caufield Place, Suite 101
Newtown, PA 18940
215-497-7430
josh.anderson@raymondjames.com

Co-Chair: Robert Brewer, CPA, CCIFP
Grassi & Co.
50 Jericho Quadrangle #200
Jericho, NY 11753
516-336-2420
rbrewer@grassicpas.com

Members:

Adanma Akujieze	Larson Design Group
Olena Allen	Arup
Dom Bernardo	CHA
Thomas Butcher	STV Group
James Cahill	Watts Architecture & Engineering, D.P.C.
David Chambers	Delta Engineers, Architects, & Land Surveyors, PC
Daniel Clarke	Wells Fargo Bank N.A.
Louis Curatolo	Syska Hennessy Group, Inc.
Francois Fayad	Hinman Consulting Engineers
Robert Fennessey	HDR
Peter Friebe	Lilker Associates Consulting Engineers, P.C.
Robert Goossen	Fisher Associates, P.E., L.S., L.A., D.P.C.
Brian Hotovy	AKF Group LLC

William Kraekel	Langan Engineering, Environmental, Surveying and Landscape Architecture and Geology, DPC
Steven Krivitzky	AKRF, Inc.
Benny Liu	Citrin Cooperman & Company LLP
Richard Maxwell	Barton & Loguidice, D.P.C.
Michael Motyka	WSP USA
Phillip Ross	Anchin, Block & Anchin LLP
Randy Tuthill	C&S Companies
Joan Verbon	Sam Schwartz Engineering, DPC
Rimma Zaleznik	Thornton Tomasetti

2) Human Resources

Chair: Kathy Metcalfe
CPL
205 Paul Street Suite 500
Rochester, NY 14604
585-454-7600
kmetcalfe@cplteam.com

Members: Lauren Fuchs Langan Engineering, Environmental, Surveying and Landscape
Architecture and Geology, DPC
Diana Kaufman C&S Companies

3) Insurance Committee

Chair: Joshua Lluch
Risk Strategies Company
1086 Teaneck Rd.
Teaneck, NJ 07666
212-826-9744
joshua.lluch@risk-strategies.com

Members: Eric Alderson Promark Associated Agencies, Inc.
Anjanette Bobrow Syska Hennessy Group, Inc.
David Boren PG Genatt Group, LLC
David Chambers Delta Engineers, Architects, & Land Surveyors, PC
Raymond Daddazio Thornton Tomasetti
Michael De Chiara Zetlin & De Chiara LLP
Tom Farina WSP USA
Peter Friebe Lilker Associates Consulting Engineers, P.C.
Lauren Fuchs Langan Engineering, Environmental, Surveying and Landscape
Architecture and Geology, DPC
Marc Gallagher Langan Engineering, Environmental, Surveying and Landscape
Architecture and Geology, DPC
David Good Mueser Rutledge Consulting Engineers
Brett Gough Ames & Gough, Inc.
Eric Hechler WSP USA
Andrew Herrmann Hardesty & Hanover, LLC
Janice Jijina Cameron Engineering & Associates, LLP
Stephen Kline GZA GeoEnvironmental of New York
Eric Morgenweck AKRF, Inc.
Barry Maltz Loring Consulting Engineers, Inc.
Brian O'Neill O'Neill Associates, Inc.
Michael Platt CHA

Kim Riter	Petty Burton Associates – A Division of William H. Connolly & Co., LLC
Mary Beth Rumble	Poole Professional – New York, Inc.
Martin Schwartzberg	Marshall Dennehey Warner, Coleman & Goggin, P.C.
David Singer	Risk Strategies Company
Jennifer Smith	C&S Companies
Nicholas Toumbekis	PG Genatt Group, LLC
Martha Vasquez	Arup
Brent Walters	STV Group
Jonathan Watts	Watts Architecture and Engineering, D.P.C.
David Zhu	AECOM

DMWBE Committee

Chair: Jim Hirani
Hirani Engineering & Land Surveying, P.C.
30 Jericho Executive Plaza, Suite 200C
Jericho, NY 11753
516-248-1010
jhirani@hiranigroup.com

Members:

Robert Badger	Kal Krishnan Consulting Services Inc.
J. Evans Doleyres	JED Engineering, P.C.
Gene Eng	GC Eng & Associates P.C.
Cindy Feinberg	Jacob, Feinberg, Katz & Michaeli Consulting Group
Phillip Galbo	Watts Architecture & Engineering, D.P.C.
Gary Guleria	A.G. Consulting Engineering, P.C.
Sanjay Naik	Naik Consulting Group, P.C.
Nagappa Ravindra	Ravi Engineering and Land Surveying, P.C.
Kamal Shahid	KS Engineers, P.C.
Barbara Thayer	B. Thayer Associates
Ram Tirumala	Distinct Engineering
Edward Watts, Jr.	Watts Architecture & Engineering, D.P.C.
Jaimee Wilson, P.E.	Pathfinder Engineers and Architects

Membership Committee

Chair: Thomas Cascino
605 Third Avenue
New York, NY 10158
212-973-2900
thomas.cascino@aecom.com

Members:

Paul Boyce	P.W. Grosser Consulting Engineer & Hydrogeologist, PC
Ammon Bush	Shumaker Consulting Engineering & Land Surveying, D.P.C.
Cyrus Izzo	Syska Hennesy Group, Inc.
Phillip Galbo	Watts Architecture & Engineering, D.P.C.
Keith Harlock	WSP USA
Karl Rohde	Nussbaumer & Clarke, Inc.
Mitchel Simplier	Jaros, Baum & Bolles
Kyle Snyder	Lochner Engineering, P.C.
David Taillon	CHA

GOVERNMENT AFFAIRS I - TRANSPORTATION**William McCormick - Executive Committee Liaison**

New York City Department of Transportation Committee (NYCDOT)

Chair: Rich Fischer
WSP USA
One Penn Plaza
New York, NY 10119
212-465-5033
rich.fischer@wsp.com

Members: Ayman Baki Tectonic Engineering & Surveying Consultants P.C.
Stelios Bertos Stantec Consulting Services Inc.
Oscar F. Bustos Urban Engineers of New York, D.P.C.
Robert Hutteman LiRo Engineers Inc.
William Marman Michael Baker International, Inc.
Amir Rizavi VHB Engineering, Surveying and Landscape Architecture, P.C.
Kamal Shahid KS Engineers, P.C.

NYS Aviation Committee

Chair: Jeremy Martelle
CHA
PO Box 5269
III Winners Circle
Albany, NY 12205-0269
518-453-3931
jmartelle@chacompanies.com

Members: Jamie Bodouva B. Thayer Associates
Kirsten Cerro C&S Companies
Indhira Figuereo WSP USA
Navin Natarajan AECOM
Wayne Repich Enovate Engineering, LLC dba Enovate Services, LLC in NY
Andrew Schueller Naik Consulting Group, P.C.
Greg Topping Passero Associates

NYS Bridge Authority Committee

Chair: John Paul Cunningham
HDR, Inc.
711 Westchester Avenue #103
White Plains, New York 10604
(914) 993-2000
johnpaul.cunningham@hdrinc.com

Members: Matt Carter ARUP
Francois Fayad Hinman Consulting Engineers

NYS County Highway Superintendents Committee

Chair: Roseann Schmid
Fisher Associates, P.E., L.S., L.A., D.P.C.
135 Calkins Road, Suite A
Rochester, NY 14623
585-334-1310
rschmid@fisherassoc.com

Members: Tom Bates KB Engineering, PC, a member of PRIMEAE Group
Joseph Dopico Maser Consulting P.A.
Joseph Mieczkowski Delta Engineers, Architects, & Land Surveyors, PC
Karl Rohde Nussbaumer & Clarke, Inc.
Dan Savage Passero Associates
Matt Smullen CPL
Charles Tutunjian Creighton Manning Engineering, LLP

NYS Department of Transportation Committee (NYSDOT)

Chair: Charles Manning
Parsons Corporation
100 Broadway
New York, NY 10005
212-266-8347
charles.manning@parsons.com

Steering Committee: Jane Charalambous HDR
Lee Ecker CHA
John Grady Ravi Engineering and Land Surveying, P.C.
A.J. Jannesari CDM Smith
Quentin Johnson Modjeski & Masters P.C.
John Karn ARUP
Ashley Richey STV Group
Matthew Schooley Barton & Loguidice, D.P.C.
Linda Shumaker Shumaker Consulting Engineering & Land Surveying, D.P.C.
Patrick Waterman LaBella Associates, D.P.C.

Open Committee Members: Any ACEC New York member firm may serve on the open committee for the NYS DOT. Open committee members shall receive information in advance of meetings, committee correspond and have access to other committee updates. Only Steering Committee members shall attend agency liaison meetings.

NYS Parks & Recreation Committee

Chair: Karim Palomino
KB Engineering, PC, a member of PRIME AE Group
315 Madison Avenue
New York, NY 10017
646-979-3613
kpalomino@primeeng.com

Members: Paul Grosser P.W. Grosser Consulting Engineer & Hydrogeologist, PC
Carmen Lapine Beardsley Design Associates Arch., Eng. & Landscape Arch., D.P.C.
Kevin McAndrew Cameron Engineering & Associates, LLP
Laura Schwanof GEI Consultants, Inc., P.C.
James Wilson MP Engineers, P.C.

NYS Thruway Authority Committee

Chair: William McCormick
Erdman Anthony
145 Culver Road, Suite 200
Rochester, NY 14620
585-427-8888
mccormickwp@erdmananthony.com

Steering Committee:

Robert Drew	Hardesty & Hanover, LLC
Brendan Fitzgerald	HVEA Engineers
Phil Galbo	Watts Architecture & Engineering, D.P.C.
Abla Gennawey	Jacobs
Cristina Lauzon	HNTB New York Engineering and Architecture, P.C.
James Morrissey	C&S Companies
Jack Robson	Foit-Albert Associates, Architecture, Engineering and Surveying, P.C.
Emily Smith	Fisher Associates, P.E., L.S., L.A., D.P.C.
Neal Weitman	Louis Berger U.S.

Open Committee Members: Any ACEC New York member firm may serve on the open committee for the NYS Thruway. Open committee members shall receive information in advance of meetings, committee correspond and have access to other committee updates. Only Steering Committee members shall attend agency liaison meetings.

Federal Highway Administration (FHWA)

Chair: Michael Loftus
HNTB New York Engineering and Architecture, P.C.
7 Southwoods Boulevard, Suite 203
Albany, NY 12211
518-560-5700
mloftus@hntb.com

Members:

Phillip Galbo	Watts Architecture and Engineering DPC
Mike Hall	Arup
Richard Perrin	T.Y. Lin International Engineering & Architecture, P.C.

GOVERNMENT AFFAIRS II – TRANSPORTATION/ENVIRONMENTAL DIVISION**Charlie Manning - Executive Committee Liaison**

Metropolitan Transportation Authority Committee

Chair: John Seiboldt
HNTB New York Engineering and Architecture, P.C.
350 Fifth Avenue, 57th Floor
New York, NY 10118
212-594-9717
jseiboldt@hntb.com

Vice-Chair: Genaro Velez
COWI
276 5th Avenue, Suite 1006
New York, NY 10001
646-545-2125
gevz@cowi.com

Members: Any ACEC New York member firm may serve on the open committee for the MTA. Open committee members shall receive information in advance of meetings, committee correspondence and have access to other committee updates.

MTA Bridges & Tunnels

Members:	Chris Gagnon	Louis Berger U.S.
	Leo Fernandez	Thornton Tomasetti
	Gill Mosseri	Parsons Corporation
	Jay Popli	Popli Design Group
	Morgan Ryan	McMillen Jacobs Associates
	Genaro Velez (lead)	COWI

MTA Rail (MNR, LIRR)

Members:	Chandu Bhoraniya	T.Y. Lin International Engineering & Architecture, P.C.
	Peter Guest	Arup
	John Seabolt (lead)	HNTB New York Engineering and Architecture, P.C.
	Mohyi Soliman	Naik Consulting Group, P.C.
	Barbara Thayer	B. Thayer Associates
	Giuseppe Tulumello	Gannett Fleming Engineers and Architects, P.C.

MTA NYC Transit

Members:	Art Alzamora	Langan Engineering, Environmental, Surveying and Landscape Architecture and Geology, DPC
	Frank Facciolo	Mott MacDonald
	Edward Feinberg	Jacob, Feinberg, Katz & Michaeli Consulting Group
	Audrey Heffernan	AKRF, Inc.
	Maxine Hill	WSP USA
	Anil Parikh	AECOM
	Genaro Velez (lead)	COWI

NYC Department of Environmental Protection Committee

Chair: Jorge Pacas
Mott MacDonald
1400 Broadway, 30th Floor
New York, NY 10018-5300
212-532-4111
jorge.pacas@mottmac.com

Steering Committee:	Kenneth Bruce	Brown and Caldwell Associates
	Glenn DiGiovanni	Greeley and Hansen LLC
	Jennifer Franco	AKRF, Inc.
	Muhammad Izhar	SI Engineering, P.C.
	James McCarthy	ARCADIS
	James J. Roberts	H2M architects + engineers
	Paul Storella	AECOM
	Danny Van Rosendaal	McMillen Jacobs Associates
	Peter Young	Hazen and Sawyer

Open Committee Members: Any ACEC New York member firm may serve on the open committee for the NYC DEP. Open committee members shall receive information in advance of meetings, committee correspondence and have access to other committee updates. Only Steering Committee members shall attend agency liaison meetings.

NYC Economic Development Corporation Committee

Chair: Linda Reardon
 NV5
 32 Old Slip
 New York, NY 10005
 646-300-7172
 Linda.Reardon@nv5.com

Members:	Rachel Belsky	Langan Engineering, Environmental, Surveying and Landscape Architecture, DPC
	Anthony Catalano	Woodard & Curran
	Steve Eber	Genesys Engineering, P.C.
	Hesham Kotby	ATANE Consulting
	Michael Liona	Hardesty & Hanover, LLC
	Tammy Petsios	STV Group
	Daniel Ramos	COWI
	Gary Rozmus	GEI Consultants, Inc., P.C.
	Gary Sorge	Stantec Consulting Services Inc.

NYS Canal Corps Committee

Chair: Greg Johnson
 Bergmann Associates, D.P.C.
 280 East Broad Street, Suite 200
 Rochester, NY 14604
 585-232-5135
 gjohnson@bergmannpc.com

Members:	Douglas Cole	KB Engineering, PC a member of PRIME AE Group
	Larry Martin	OBG
	Robert Radley	T.Y. Lin International Engineering & Architecture, P.C.
	Kelly Saladis	Shumaker Consulting Engineering & Land Surveying, D.P.C.
	Patrick Waterman	LaBella Associates, D.P.C.

NYS Department of Environmental Conservation Committee

Chair: Paul Grosser
P.W. Grosser Consulting Engineer & Hydrogeologist, P.C.
630 Johnson Ave # 7
Bohemia, NY 11716
631-589-6353
Paulg@pwgrosser.com

Members: James Baker Foundation Design, P.C.
John Boule Dewberry
Doug Clark Ryan-Biggs | Clark Davis Engineering & Surveying, D.P.C.
Robert Harris Langan Engineering, Environmental, Surveying, Landscape
Architecture and Geology, DPC
Steven Kline GZA GeoEnvironmental of New York
Matt Kennedy VHB Engineering, Surveying and Landscape Architecture, P.C.

NYS Environmental Facilities Corporation Committee

Chair: Tim Steed
Hunt Engineers, Architects & Land Surveyors, P.C.
Airport Corp. Park, 100 Hunt Center
Horseheads, NY 14845
607-358-1000
steedt@hunt-eas.com

Members: Rob DeGiorgio D&B Engineers & Architects
Shelly Johnston Creighton Manning Engineering, LLP
Michael Marino Nussbaumer & Clarke, Inc.
John Scheri Mott MacDonald
Gregor Smith BCA Architects & Engineers
Jeffrey Smith Municipal Solutions, Inc.
Steve Tanner CPL

Port Authority of New York & New Jersey Committee (PANY&NJ) (a joint committee of ACEC New York and ACEC New Jersey)

Chair: Kevin Doyle, Stantec, representing ACEC New Jersey

Vice Chair NY: Beth DeAngelo, representing ACEC New York
WSP USA

New York Steering

Committee: Najib Abboud Thornton Tomasetti
Aakash Badjatya LERA
Bill McMenamin Greenman-Pedersen, Inc.
Sergiu Pelau Syska Hennessy Group, Inc.
Brendan Weiden Jaros, Baum & Bolles

Vice Chair NJ: Tony Panzarino, representing ACEC New Jersey

New Jersey Steering

Committee: Andy Kamilaris Dewberry
OPEN ATANE Consulting

Open Committee Members: Any ACEC New York or ACEC New Jersey member firm may serve on the open committee for the PANY&NJ. Open committee members shall receive information in advance of meetings, committee correspondence and have access to other committee updates. Only Steering Committee members shall attend agency liaison meetings.

US Army Corps of Engineers Committee

Chair: John Boulé
Dewberry
132 West 31st Street, Suite 301
New York, NY 10001
212-685-0900
jboule@dewberry.com

Committee: Santiago Alfageme Moffatt & Nichol
John Bilotta Syska Hennessy Group, Inc.
Mark Jaworski Jacobs

GOVERNMENT AFFAIRS III – BUILDINGS AND ENERGY DIVISION**Rick Zottola - Executive Committee Liaison**

Dormitory Authority of the State of New York Committee (DASNY)

Chair: Michael Winderl
LaBella Associates, D.P.C.
300 State Street #201
Rochester, NY 14614
585-454-6110
mwinderl@labellapc.com

Members: Nicholas Kumbatovic Cameron Engineering & Associates LLP
Lisa Lau AKRF, Inc.
Christopher Mele AI Engineers, Inc, PC
David J. Meyer Pathfinder Engineers & Architects, LLP
Tom Scerbo AECOM
Andrew Taylor Erdman Anthony

Energy Committee

Chair: Dwight Harrienger
Stantec Consulting Services, Inc.
61 Commercial Street, Suite 100
Rochester, NY 14614
585-413-5257
dwright.harrienger@stantec.com

Members: Charles Bertuch Bergmann Associates, D.P.C.
Bill Bishop Pathfinder Engineers and Architects LLP
Andrew Clevenger KCI Engineering of New York, P.C.
Scott Frank Jaros, Baum & Bolles
Steve Giordano Dewberry
Christopher Korzenko CDM Smith
Hillary Lobo Arup
Charlie Marino AKF Group LLC
Ronald Mineo Genesys Engineering, P.C.

New York City Department of Design & Construction Committee (NYCDDC)

Chair: Joseph Menzer
NV5
32 Old Slip
New York, NY 10005
212-741-8090
joseph.menzer@nv5.com

Members: Syed Ali APTIM
Denise Carter Greenman-Pedersen, Inc.
Luke Martinek Sam Schwartz Engineering, DPC
Maiké Rodriguez Infrastructure Engineering, Inc., P.C.
Bob Steele L.K. McLean Associates, P.C.
Ram Tirumala Distinct Engineering Solutions, Inc.

NYC Housing Authority Committee

Chair: Andrew Narus
Cameron Engineering & Associates, LLP
177 Crossways Park Drive
Woodbury, NY 11797
516-224-5202
anarus@cameronengineering.com

Members: Ayman Baki Tectonic Engineering & Surveying Consultants P.C.
Nicholas Dandolos Gannett Fleming Engineers and Architects, P.C.
Robert Ikes III H2M architects + engineers
Fabrizio Munoz Munoz Engineering, P.C.
Michael Urbach Louis Berger U.S.

NYC School Construction Authority Committee (NYC SCA)

Chair: Jon Miller
STV Group
225 Park Avenue South
New York, NY 10003
212-614-7619
jon.miller@stvinc.com

Members: Harry Baker KS Engineers, P.C.
Ron Dasgupta A.G. Consulting Engineering, PC
Michael DesRochers Loring Consulting Engineers, Inc.
Elias Matar LERA
Kabi Pandey Lilker Associates Consulting Engineers, P.C.
Jared Quartel HDR
Joe Tulumello Gannett Fleming Engineers, P.C.

NYS Office of General Services Committee (NYS OGS)

Chair: Anne Smith
GHD Consulting Services, Inc.
301 Plainfield Road, Suite 180
Syracuse, NY 13212
315-445-2650
anne.smith@ghd.com

Members: Rich Amadon CHA
Nick Cerro C&S Companies
Travis Overton BCA Architects & Engineers
Jeffrey Trzeciak KB Engineering, PC, a member of PRIME AE Group
Cassandra Wetzel GZA GeoEnvironmental of New York

State University Construction Fund Committee (SUCF)

Chair: Richard (Rick) Zottola
LERA
40 Wall Street, 23rd Floor
New York, NY 10005
212-750-9000
rick.zottola@lera.com

Members: Dirk Anderson Lizardos Engineering Associates. P.C.
Michael DesRochers Loring Consulting Engineers, Inc.

Wayne Hui	Syska Hennessy Group, Inc.
Christine Oates	Jacobs
David Tanenbaum	Lilker Associates Consulting Engineers, P.C.

***Scholarship Fund
(separate 501c3)***

Chair: Steven Abendschein
Stantec Consulting Services Inc.
475 5th Avenue
New York, NY 10017
212-366-5600
steven.abendschein@stantec.com

Members:

Arthur Alzamora	Langan Engineering, Environmental, Surveying and Landscape Architecture and Geology, DPC
Elias Dagher	Dagher Engineering, PLLC
Greg Hutter	Popli Design Group
Christopher LaTuso	HDR

Ad Hoc Committee(s):

Ad Hoc MWBE Committee (established Nov. 2017)

Chair: Jim Hirani
Hirani Engineering & Land Surveying, P.C.
30 Jericho Executive Plaza, Suite 200C
Jericho, NY 11753
516-248-1010
jhirani@group.com

Members:

Ann Clark	Ryan-Biggs Clark Davis Engineering & Surveying
Lee Ecker	CHA
Charlie Manning	Parsons Corporation
Bernie McNeilly	WSP USA
Jennifer Michniewicz	CPL
Kamal Shahid	KS Engineers, P.C.
Linda Shumaker	Shumaker Consulting Engineering & Land Surveying, D.P.C.
Philip Thayaparan	Prudent Engineering, LLP
Ed Watts, Jr.	Watts Architecture & Engineering, D.P.C.
Neal Weitman	Louis Berger U.S.
Rick Zottola	LERA

If you have any changes or corrections to this list, please email Tina Deale at tina@acecnyc.org.