

State Committees

August 1, 2025 – July 31, 2026

Committees are essential to the mission and vision of ACEC New York. The work of these committees affects all aspects of the engineering profession, from legislative advocacy to environmental issues.

Committees offer more than a significant opportunity to impact the professional environment:

- *Committee work is often highly educational and interactive.*
- *Members share information that can improve their business practices and help make their firms more profitable and successful, and their efforts support the industry as a whole.*
- *Committee involvement is a great way to build connections with people throughout the organization and the entire industry.*

As you can see on the following pages, there is an ACEC New York committee for virtually every interest, and each one is important to the organization and the industry. If you are interested in serving on a committee, please sign up through your firm when participation forms are issued to the main contact at each member firm in the Spring.

NOTE: *To search within the PDF, press CTRL + F to open a search bar and enter firm name.*

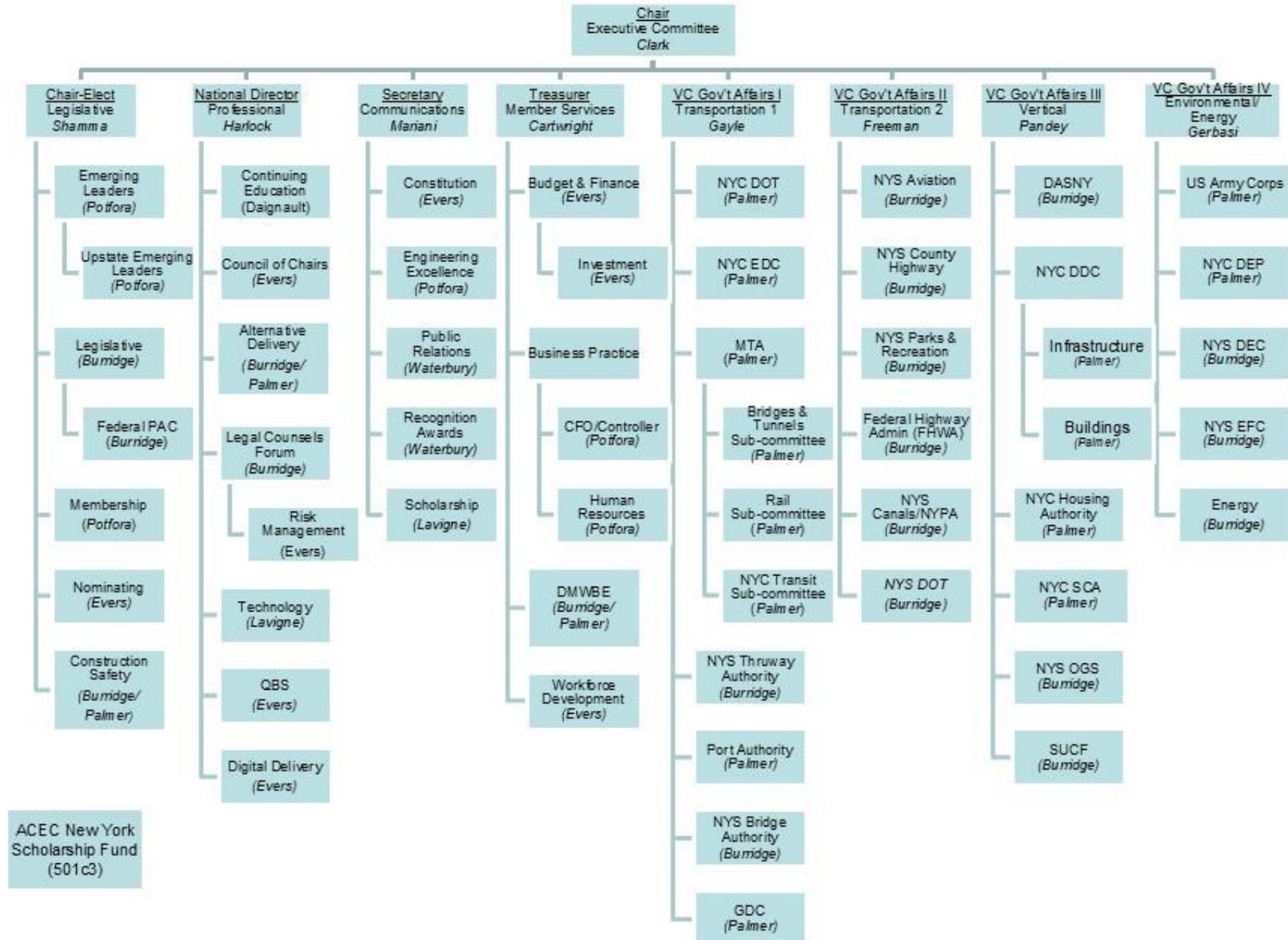
Table of Contents

ACEC New York Organizational Chart	4
Legislative Affairs Division	
Mike Shamma, Executive Committee Liaison	
Emerging Leaders Committee	5
Legislative Committee	6
1) Federal Committee/ACECPAC	8
Membership Committee	8
Nominating Committee	9
Construction Safety Committee	10
Professional & Industry Division	
Keith Harlock, Executive Committee Liaison	
Continuing Education Committee	11
Council of Chairs Committee	11
Alternative Delivery Committee	12
Legal Counsels Forum	12
Technology Committee	14
QBS Committee	15
Digital Delivery Committee	15
Communications Division	
Jessica Mariani, Executive Committee Liaison	
Constitution Committee	16
Engineering Excellence Committee	16
Public Relations Committee	17
Recognition Awards Committee	18
Scholarship Committee	18
Scholarship Fund Committee (separate 501c3)	19
Member Services Division	
Robert Cartwright, Executive Committee Liaison	
Budget & Finance Committee	20
1) Investment	20
Business Practice Committees:	
1) CFO/Controller Committee	20
2) Human Resources Committee	21
DMWBE Committee	22
Workforce Development Committee	23
Government Affairs I – Transportation 1 Division	
Oneil Gayle, Executive Committee Liaison	
NYC Department of Transportation Committee	24
NYC Economic Development Corporation Committee	24
Metropolitan Transportation Authority Committees	24
1) Bridges & Tunnels Sub-committee	24
2) Rail (MNR, LIRR) Sub-committee	25

Table Contents

3) NYC Transit Sub-committee	25
NYS Thruway Authority Committee	25
Port Authority of New York & New Jersey Committee	25
NYS Bridge Authority Committee	26
Gateway Development Committee	26
Government Affairs II – Transportation 2 Division	
Ashley Freeman, Executive Committee Liaison	
NYS Aviation Committee	27
NYS County Highway Superintendents Committee	27
NYS Parks & Recreation Committee	27
Federal Highway Administration (FHWA)	27
NYS Canals/NYPA Committee	28
NYS Department of Transportation Committee	28
Government Affairs III – Vertical Division	
Kabi Pandey, Executive Committee Liaison	
Dormitory Authority of the State of New York Committee	29
NYC Department of Design & Construction Committee	29
NYC Housing Authority Committee	29
NYC School Construction Authority Committee	30
NYS Office of General Services Committee	30
State University Construction Fund Committee	30
Government Affairs IV – Environmental/Energy Division	
Peter Gerbasi, Executive Committee Liaison	
US Army Corps of Engineers Committee	31
NYC Department of Environmental Protection Committee	31
NYS Department of Environmental Conservation Committee	31
NYS Environmental Facilities Corporation Committee	31
Energy Committee	32

ACEC New York 2025-2026 Committee Organizational Chart



LEGISLATIVE AFFAIRS DIVISION
Mike Shamma - Executive Committee Liaison

Emerging Leaders Committee

Chair: Francisco Contreras
TY Lin
francisco.contreras@tylin.com

Vice-Chairs:

Upstate
Sarah Carroll
Creighton Manning Engineering, LLP
scarroll@cmellp.com

Downstate
Joseph Pokorny
GFT
jpokorny@gfnet.com

Members:

Keyana Aghamirzadeh	Dewberry
Umit Akkaya	MJ Engineers
Alex Akselrod	IMEG
Zane Amray	ZOFS Engineering, P.C.
Victoria Arbitrio	Gilsanz Murray Steficek, LLP
Alison Auriemmo	H2M architects + engineers
Samira Ayati	IVY Engineering Group
Jeanette Baiardi	AKF Group LLC
Justin Benoit	Energia USA, Inc.
Sharon Berger	GFT
Donyelle Booker	COWI
Kelli Capka	KC Engineering and Land Surveying, P.C.
Catarina Carvalho	Arup
Marisol Castro	VHB
Nacy Clark	KC Engineers
Jerry Craig	Ryan Biggs Clark Davis Engineering & Surveying, D.P.C.
Charlie Cunningham	Erich Arcement Creative Engineering, P.C
Michael DeGaspari	VHB Engineering, Surveying and Landscape Architecture, P.C.
JD DesLoges	Jaros, Baum & Bolles
Chris Dorman	Michael Baker International, Inc.
Danielle Edwards	AECOM
Alex Engelman	Syska Hennessy Group, Inc.
Cindy Feinberg	Jacob, Feinberg, Katz & Michaeli Consulting Group
Bill Finch	Barton & Loguidice
Eric Focaraccio	WSP
Jacob Fradkin	MFS Engineers & Surveyors
Andrew Franceschina	Loring Consulting Engineers, Inc.
Joshua Gardner	Azar Design Co, Architecture, Landscape Architecture, Engineering and Surveying, P.C.
Steven Gerazounis	MG Engineering D.P.C.
Mallory Griffin	GHD
Jaclyn Grimaldi	LiRo-Hill
Rahul Joag	LERA
Ritwik Kakati	Dagher Engineering, PLLC
Lori Katzman	HNTB New York Engineering and Architecture, P.C.
Veronica Kelly	Stantec Consulting Services Inc.
Jeanette Koch	Watts Engineers
Connie Lamos	Infrastructure Engineering, Inc., P.C.

Daniel Levine	Parsons
Cristian Liriano	Liriano & Associates Engineering, Consulting Services PLLC
Julian Llorente	KC Engineering and Land Surveying, P.C.
Michael Lombardo	Lizardos
Dan Maher	PS&S
Michael Martello	Kiewit Engineering (NY) Corp.
Ekaterina McConville	Mott MacDonald
Dylan McDermott	HDR
Nicole Melendez	Parsons
Andrew Milne	C&S Companies
Michael Mudalel	MFS Engineers & Surveyors
Matt Nayer	NV5
Natalie O'Rourke	McFarland-Johnson, Inc.
Roma Parikh	STV Incorporated
Ronak Patel	MP Engineers and Architects, P.C.
Jorge Patino Velasquez	JMT of New York, Inc.
Asher Peltz	GEI Consultants, Inc., P.C.
Abhay Prasad	Jois Construction Management
Chad Reinemann	Ryan Biggs Clark Davis Engineering & Surveying, D.P.C.
Jessica Ross	Colliers Engineering & Design
Jamshaid Sawab	Jacobs
Mike Scanlon	P.W. Grosser Consulting Engineer & Hydrogeologist, PC
Joshua Schmidt	Fisher Associates, P.E., L.S., L.A., D.P.C.
Daniel Schmidt	GFT
Julianna Seddio	CSA Group NY Architects & Engineers, PC
Peter Taggart	Greenman-Pedersen, Inc.
Sophia Tampakis	IMEG
Julie Vuotto	Langan Engineering, Environmental, Surveying, Landscape Architecture and Geology, DPC
Lauren Weber	Jacobs
Ethan Wells	MG McLaren
Victoria Whelan	GZA GeoEnvironmental of New York
Alexandra Willey	H&H
Wael Youssef	Kiewit Engineering (NY) Corp.

Legislative Committee

Chair

Maria Lehman
GHD Consulting Services, Inc.
maria.lehman@ghd.com

Members:

Umit Akkaya	M&J Engineering
Rich Amadon	CHA
Richard Amodei	STV Incorporated
Nick Anastasi	P.W. Grosser Consulting Engineer & Hydrogeologist, PC
Vicki Arbitrio	Gilsanz Murray Steficek, LLP
Samira Ayati	IVY Engineering Group
Jeanette Baiardi	AKF Group LLC
James Baker	Foundation Design PC
Robert A. Banner	Ingram Yuzek Gainen Carroll + Bertolotti LLP
Schillivia Baptiste	Baptiste Engineering
Mellanie Bennett-Monclova	Mott MacDonald
Sharon Berger	GFT
Justin Bernbach	HNTB New York Engineering and Architecture, P.C.
John Boule	Dewberry
Wayne Bonesteel	Azar Design Co, Architecture, Landscape Architecture, Engineering and Surveying, P.C.
Donyelle Booker	COWI

John F. Brusa Jr.	Barton & Loguidice, D.P.C.
Zachary Campbell	Arcadis
Tony Canale	Mueser Rutledge
Robert Cartwright	WSP USA Inc.
Vincent Cassano	Jacobs
Jerry Cavaluzzi	Kennedy/Jenks Consultants and KJ Engineers and Geologists of New York PC
David Chamber	Delta
Mark Chancy	Mott MacDonald
Jane Charalambous	HDR
Nancy Clark	KC Engineering and Land Surveying, P.C.
Kevin Collins	HNTB New York Engineering and Architecture, P.C.
Daniel Colombini	Goldman Copeland Associates, PC
Charles Copeland	Goldman Copeland Associates, PC
Tom Curran	Stantec Consulting Services Inc.
Tom Crane	EnTech Engineering, P.C.
Erin Crotty	CHA Consulting
Raymond Daddazio	Thornton Tomasetti
Nick Dandolo	GFT
John Deerkoski	Thornton Tomasetti
Frank DelSignore	CHA
Bernadette DeVito	Constantinople & Vallone Consulting
Michael DiSabato	Parsons
Nancy Doon	VHB
Daniel Duprey	CPL
Cindy Feinberg	Jacob, Feinberg, Katz & Michaeli Consulting Group
Michael Fleischer	Brown & Weinraub
Donald Fletcher	Barton & Loguidice, D.P.C.
John Gasparine	WSP USA Inc.
Peter Gerbasi	LiRo-Hill
Reza Ghasemi	Mott MacDonald
Brett Gough	Ames & Gough, Inc.
Charles Gozdziwski	H&H
Carl Ian Graham	C.I. Graham Sustainable Energy
Bryan Grogan	P.W. Grosser Consulting Engineer & Hydrogeologist, PC
Ariganjan (Gary) Guleria	A.G. Consulting Engineering, PC
Douglas R. Halstrom	L'Abbate, Balkan, Colavita & Contini, L.L.P.
Julie Harris	Lu Engineers
Ryan Henderson	JMT of New York, Inc.
Richard Horstmann	Azar Design Co, Architecture, Landscape Architecture, Engineering and Surveying, P.C.
Robert Hutteman	Lu Engineers
Greg Hutter	Popli Design Group
Tariq Islam	AI Engineers, Inc., P.C.
Jerry Jannetti	WSP USA Inc.
Cawsie Jijina	Severud Associates Consulting Engineers P.C.
Walter Kaeck	Mueser Rutledge Consulting Engineers
Hope Kaufman	Dewberry
Omar Khan	WSP USA Inc.
Peter Koklanos	LiRo-Hill
James Laurita	GFT
David Liebgold	Michael Baker International
Cristian Liriano	Liriano & Associates Engineering, Consulting Services PLLC
Joshua Lluch	Foundation Risk Partners
+Orrin B. MacMurray	C&S Companies
Eric Madden	JMT of New York, Inc.
Radhi Majmudar	Innovative Structural and Specialty Engineering
Joseph Manzella	H2M Architects, Engineers, Land Surveying and Landscape

	Architecture, DPC dba H2M architects + engineers
Michael Marino	Nussbaumer & Clarke, Inc.
William McCormick	Erdman Anthony
James McDuffee	Delta Engineers, Architects, & Land Surveyors, PC
Chris McHugh	AKF Group
Malcom McLaren	M.G. McLaren, PC, d/b/a McLaren Engineering Group
Thomas McLaughlin	HDR
Brian Miller	LaBella Associates, D.P.C.
Paul Millman	SUPERSTRUCTURES Engineering + Architecture, PLLC
Mia Nadasky	HVEA Engineers
Sanjay Naik	Naik Consulting Group, P.C.
Nigel Nicholls	Arup
Karim Palomino	EnTech Engineering, P.C.
Shivani Patel	Jacobs
Rachael Philipson	Brown & Caldwell
Raymond Pinto	Parsons Corporation
Joseph Pizzurro	VHB Engineering, Surveying and Landscape Architecture, P.C.
David Pollicino	IMEG
Jonathan Reyes	Constantinople & Vallone Consulting
Matthew Roe	Stantec Consulting Services, Inc.
Lee Sackett	L'Abbate, Balkan, Colavita & Contini, L.L.P.
Andy Sandor	AtkinsRealis
Kovid Saxena	TY Lin
Roseann Schmid	Fisher Associates, P.E., L.S., L.A., D.P.C.
Thomas Schoettle	CDM Smith
Samuel Schwartz	Sam Schwartz Engineering, DPC
Martin Schwartzberg	Marshall Dennehey Warner Coleman & Goggin, P.C.
Jerry Sentz	Azar Design Co, Architecture, Landscape Architecture, Engineering and Surveying, P.C.
Mike Shamma	TY Lin
Kirsten Sibilia	Dattner Architects
Emily Smith	Fisher Associates, P.E., L.S., L.A., D.P.C.
Julie Stein	HDR
Dan Sweetland	C&S Companies
Tim Treharne	Arup
Joe Tulumello	GFT
Mark Tytka	WSP USA Inc.
Genaro Velez	COWI
Richard Venvertloh	LaBella Associates, D.P.C.
Timothy Walck	Wendel WD Architecture, Engineering, Surveying and Landscape Architecture, P.C.
David Weiss	WSP USA Inc.
Stephen Willig	Donovan Hatem LLP
Susan Wylie	LaBella Associates, D.P.C.
Peter Young	Hazen and Sawyer
Catherine Zinnel	VHB Engineering, Surveying and Landscape Architecture, P.C.

Federal Sub-Committee/ACEC PAC

Chair: Lee Ecker
CHA
lecker@chacompanies.com

Vice Chair: Keith Harlock
WSP USA
Keith.harlock@wsp.com

Members:	Vicki Arbitrio Karen Ashton Schillivia Baptiste Elena Barnett Christopher Bond	Gilsanz Murray Steficek LLP Stantec Consulting Services, Inc. Baptiste Engineering HDR Hunt Engineers, Architects, Land Surveyors & Landscape Architect, DPC
	Robert Cartwright Ginger Croom Ray Daddazio Jamie Davis Dino DeFeo Cindy Feinberg Indhira Figuereo Charles Gozdziwski Sachin Gajwani Keith Harlock Jim Hirani Shelly Johnston John Karn Omar Khan Stephen Lasser Charles Manning Jessica Mariani Christopher McDermott Thomas McLaughlin Bernie McNeilly Brian Miller Sajid Sheikh Emily Smith	WSP USA Inc. CDM Smith Thornton Tomasetti Ryan-Biggs Clark Davis Engineering & Surveying AKF Group LLC Jacob, Feinberg, Katz & Michaeli Consulting Group WSP USA Inc. H&H Brown & Caldwell WSP USA Inc. Hirani Engineering & Land Surveying, P.C. Creighton Manning Engineering, LLP Arup WSP USA Inc. Arup Global Infrastructure Solutions Inc. HVEA Engineers AECOM HDR Liro-Hill LaBella Associates, D.P.C. Enovate Fisher Associates, P.E., L.S., L.A., D.P.C.

Membership Committee

Chair: Michael Shamma
TY Lin
michael.shamma@tylin.com

Members:	Schillivia Baptiste Sue Bayat Melanie Bennett-Conclova Christopher Bond	Baptiste Engineering EnTech Engineering, P.C. Mott MacDonald Hunt Engineers, Architects, Land Surveyors & Landscape Architect, DPC
	John Boule Rhonda Cardone Chris Carter Robert Cartwright Nancy Clark Stephen Conenna John Deerkoski David DeLuca Bill Doughty Karen Franz Ashley Freeman Alexa Gangemi Oneil Gayle Peter Gerbasi Craig Hahn	Dewberry Dewberry Stantec Consulting Services, Inc. WSP USA Inc. KC Engineering and Land Surveying, P.C. Columbia Consulting Engineers, PLLC Thornton Tomasetti H&H Greenman Pedersen AKRF, Inc. Popli, Architects + Engineering & L.S., D.P.C. dba Popli Design Group HNTB New York Engineering and Architecture, P.C. Loring Consulting Engineers, Inc. LiRo-Hill Vachris Engineering, P.C.

Keith Harlock	WSP USA Inc.
Julie Harris	Lu Engineers
John Hubert	WSP USA Inc.
Sarwat Izhar	SI Engineering Inc.
Cyrus Izzo	Syska Hennessy Group, Inc.
Sarah Jampole	VHB Engineering, Surveying and Landscape Architecture, P.C.
Rahul Joag	LERA Consulting Structural Engineers
Erik LeClair	CDM Smith
Joseph Manzella	H2M architects + engineers
Jessica Mariani	HVEA Engineers
Christopher McDermott	AECOM
Bryan McDermott	Jacobs
Thomas McLaughlin	HDR
Christina Minkler	JMT of New York, Inc.
Patrick Nicoletta	MRB Group, Engineering, Architecture and Surveying, D.P.C.
Aine O'Dwyer	Enovate
Doug Obrist	C&S Companies
Kabi Pandey	IMEG Consultants Corp.
Peter Pappas	STV Incorporated
Phil Parisi	MG Engineering D.P.C.
Jessica Ross	Colliers Engineering & Design
Matthew Schooley	Barton & Loguidice, D.P.C.
Shila Shah-Gavnaudias	AECOM
Timothy Walck	Wendel WD Architecture, Engineering, Surveying and Landscape Architecture

Nominating Committee

Chair: Keith Harlock
WSP USA
Keith.harlock@wsp.com

Members: Art Alzamora Langan
Dan Duprey CPL
Rick Zottola LERA Consulting Structural Engineers

Construction Safety Committee

Chair: Douglas Glorie
STV Incorporated
douglas.glorie@stvinc.com

Members: Christo Basson Mott MacDonald
Robert Cartwright WSP USA Inc.
John Grady Ravi Engineering and Land Surveying, P.C.
Quaiser Hashmi ATANE Design and Construction Consultants
Brian Jones Creighton Manning Engineering, LLP
Doug Maas Cosentini Associates – a Tetra Tech Company
Brenden O'Shea H&H
Robert Romance STV Incorporated
Billy Rynne Brown & Caldwell Associates
Greg Shaw Stantec Consulting Services, Inc.
Ryan Stecher Jaros, Baum & Bolles
Mazher Usmani Dewberry
Michael Vardaro Zetlin & De Chiara LLP
Joe Pokorny (Emerging Leader Rep) GFT

PROFESSIONAL & INDUSTRY DIVISION**Keith Harlock - Executive Committee Liaison**

Continuing Education Committee

Chair: Phil Galbo
Watts Architecture & Engineering, D.P.C.
pgalbo@watts-ae.com

Members:

Eric Alderson	Promark Associated Agencies, Inc.
Andy Arifin	Arup
Chris Cerino	STV Inc.
Eric Chan	IMEG
Mark Drozdov	Lozier, Inc.
Brian Healy	JMT Of New York, Inc.
Noelle Ibrahim	VRX, Inc.
Ramsey Kahi	Lu Engineers
Ryan Lean	Jaros, Baum & Bolles
John McCarthy	Risk Strategies
Jeffrey Messinger	STV Incorporated
Kriton Pantelidis	Risk Strategies
Paul Pizzimenti	Haley & Aldrich of New York, LLP
Yusuf Poonawala	M&J Engineering P.C.
Julia Prosper	McFarland-Johnson, Inc.
Paul Rouis	Ryan Biggs Clark Davis Engineering & Surveying, D.P.C.
Konstantinos Syngros	Langan Engineering, Environmental, Surveying, Landscape Architecture and Geology, DPC
Sophia Tompakis	IMEG
Joseph Viola	WSP USA Inc.
Charles White	Barton & Loguidice, D.P.C

Council of Chairs Committee

Chair: Keith Harlock
WSP USA
Keith.harlock@wsp.com

Members:

Thomas Cascino	AECOM
Andrew Ciana	Langan Engineering, Environmental, Surveying, Landscape Architecture and Geology, DPC
Art Alzamora	Langan Engineering
Raymond Daddazio	Thornton Tomasetti
Dan Duprey	CPL
Charles Gozdziwski	H&H
Gregory Kelly	STV Incorporated
Orrin MacMurray	C&S Companies
Richard McFadden	Jaros, Baum & Bolles
Thomas McLaughlin	HDR
Robert Radley	T.Y. Lin International Engineering and Architecture, P.C.
Mitchel Simpler	Jaros, Baum & Bolles
Rick Zottola	LEREA Consulting Structural Engineers

Alternative Delivery Committee

Steering Committee

Chair:	Xiaohu Fan	AtkinsRealis
Steering Members:	Wahid Albert	AECOM
	Matthew Alexander	Jaros, Baum & Bolles
	Schillivia Baptiste	Laland Baptiste
	David DeLuca	H&H
	Scott Geiger	WSP USA Inc.
	Xiaohu Fan	AtkinsRealis
	Dana Heht	GFT
	Keith Itzler	Dewberry
	Chuck Kohler	STV Incorporated
	Ray Pinto	Parsons
	Fred Tallarico	Jacobs
	Raj Ravilla	KC Engineers

Legal Counsels Forum

Chair:	Joseph Dennis ARUP Joseph.Dennis@Arup.com
---------------	---

Members:

Robert Attardo	LaBella Associates
Jeanette Baiardi	AKF Group LLC
Renard Barnes	PS&S / AJS Shared Services
Scott Beratan	HDR
Al Bereche	Liro-Hill
Sara Biser	FoxRothschild, LLP
Anjanette Bobrow	Syska Hennessy Group, Inc.
Daniel Boriello	Thornton Tomasetti
Gregg Bundschuh	Greyling Insurance Brokerage
Annalee Cataldo	Kosakoff & Cataldo LLP
Gerry Cavaluzzi	Kennedy/Jenks Consultants and KJ Engineers and Geologists of New York PC
Howard Cohen	AECOM
Kent Collier	Greyling Insurance Brokerage
Audrey Daly	GFT
Nikki Dames	GFT
Michael De Chiara	Zetlin & De Chiara LLP
Joseph Dennis	Arup
Ona Dudonis	Enovate
Duncan Findlay	GHD Consulting Services, Inc.
Ken Fisher	Cozen O'Connor
Eric Gernant	Ramboll
Jordan Green	GHD
Doug Halstrom	L'Abbate, Balkan, Colavita & Contini, L.L.P.
Jared Hand	Langan Engineering, Environmental, Surveying, Landscape Architecture and Geology, DPC
Judith Held	STV Incorporated
Lena Holohan	Arup
Hillary Jassey	WSP USA Inc.
Lindsay Johnson	Langan
Charles Kim	ACEC
Michael Klerer	Mott MacDonald
Julie Lee	WSP USA Inc.
Harry Makris	Milber Makris Plousadis & Seiden, LLP

Erin Margolius	CDM Smith
John McCarthy	Bolton-St. Johns, LLC
William McCarthy	Bolton-St. Johns, LLC
Barbara McLemore	GFT
Eric Morgenweck	AKRF, Inc.
Kriton Pantelidis	Risk Strategies
Michael Platt	CHA
Shoshana Rosenberg	WSP USA Inc.
William Rospars	H2M architects + engineers
Sushmita Roy	LiRo-Hill
Lee Sacket	L'Abbate, Balkan, Colavita & Contini, L.L.P.
Sean Schoenborn	Colliers
Martin Schwartzberg	Marshall Dennehey Warner Coleman & Goggin, P.C.
Peter Seiden	Milber Makris Plousadis & Seiden, LLP
Jennifer Smith	C&S Companies
Keith Stevens	L'Abbate, Balkan, Colavita & Contini, L.L.P.
Jeff Stone	Stantec Consulting Services Inc.
Lina Telese	JB&B
Thomas Titsworth	CHA
Michael Vardaro	Zetlin & De Chiara LLP
Scott Winikow	Donovan Hatem

Technology Committee

Chairs:

Jim Dray
Thornton Tomasetti
jdray@thorntontomasetti.com

Sam Ishak
Langan Engineering, Environmental, Surveying,
Landscape Architecture and Geology, DPC
sishak@langan.com

Guy Pascarello
AKRF, Inc.
gpascarello@akrf.com

Members:

Umit Akkaya	M&J Engineering P.C.
Gustavo Amaris	Severud Associates Consulting Engineers PC
Jonathan Ball	Loring Consulting Engineers, Inc.
Dan Benjamin	CPL
Alex Cabrera	AKF Group LLC
Jay Conti	Jaros, Baum & Bolles
Dan Corey	STV Incorporated
Steven Costa	Stantec Consulting Services Inc.
Brian Cresenzi	GFT
Ashley Crespo-Calamia	VHB Engineering, Surveying and Landscape Architecture, P.C.
Jim Crisanti	McFarland-Johnson, Inc.
Jose Delacruz	Dattner Architects
Jon DeSalvatore	Langan Engineering, Environmental, Surveying, Landscape Architecture
and Geology, DPC	
John DiCamillo	Arup
Rick Gobeille	Stantec Consulting Services Inc.
Lauren Groff	Groff NetWorks
Jeff Hodgson	Ryan Biggs Clark Davis Engineering & Surveying, D.P.C.
Gene Irving	Dewberry
KiSeok Jeon	STV Incorporated
Ritwik Kakati	Dagher Engineering, PLLC

James LaMaire	PS&S
Brent Long	Fisher Associates, P.E., L.S., L.A., D.P.C.
Greg Luchese	P.W. Grosser Consulting Engineer & Hydrogeologist, P.C.
Emily McKee	PRIME AE Group of NY
Anthony Mea	LERA Consulting Structural Engineers
Jovan Mijanovic	STV Group
Rubens Mulla	CSA Group NY Architects & Engineers, PC
Mike Nilson	Langan Engineering, Environmental, Surveying, Landscape Architecture and Geology, DPC
Frederick Noel	Syska Hennessy Group, Inc.
Joe Pantina	LiRo-Hill
Jessica Ping	TYLin
Erik Quinn	C&S Companies
Justin Racelis	Stantec Consulting Services Inc.
Ron Sattan	Mott MacDonald
Michael Soyfer	IMEG Consultants Corp
Patrick Tennant	Lizardos Engineering Associates, P.C.
Jaak Vandensype	HDR
Sean Williams	Citrin Cooperman & Co., LLP
Joshua Gardner (Emerging Leader Rep)	Azar Design Co, Architecture, Landscape Architecture, Engineering and Surveying, P.C.

QBS Committee

Chair: Bernie McNeilly
LiRo-Hill
McNeillyB@LiRo-Hill.com

Members:

Steve Godlewski	Fisher
Rajat Jain	Hatch
Zhenqi Cai	Mott MacDonald
Erik Atkins	McFarland Johnson, Inc.
Kevin Collins	HNTB New York Engineering and Architecture, P.C.
Jon Hartley	Stantec Consulting Services, Inc.
Raim Izhar	SI Engineering, P.C.
Christopher Pierce	Wright Pierce
John Hubert	WSP USA Inc.

Digital Delivery Committee

Chair: Scott Lagace
WSP USA Inc.
Scott.Lagace@wsp.com

Members:

Jeff Berg	Arup
Michael Croce	Colliers Engineering & Design
Barry Keung	H&H
Michael (Mike) Fuller	JMT of New York, Inc.
Aditi Patel	LiRo-Hill
Keith Harlock	WSP USA Inc.
Darryl Johnson	Michael Baker
Brad Hollister	Stantec Consulting Services Inc.
Ron Sattan	Mott MacDonald
Nachiket Phansalkar	Stantec Consulting Services
Magdalena Gasior	TY Lin
Noelle Ibrahim	VRX
Nicholas Rescigno	Modjeski and Masters, Inc.
Otto Schwartz	Ryan Biggs Clark Davis Engineering & Surveying, D.P.C.

Charles Longworth
Dan Pawlack

GPI
Fisher Associates, P.E., L.S., L.A., D.P.C.

COMMUNICATIONS DIVISION

Jessica Mariani - Executive Committee Liaison

Constitution Committee (EXCOM)

Chair: Jessica Mariani
HVEA Engineers
jmariani@hveapc.com

Members:

Kieth Harlock	WSP USA Inc
Michael Shamma	TY Lin
Robert Cartwright	WSP USA Inc.
Nancy Clark	KC Engineering
Oneil Gayle	Loring Consulting Engineers, Inc.
Peter Gerbasi	LiRo-Hill
Kabi Pandey	IMEG
Ashely Freeman	Fisher Associates

Engineering Excellence Committee

Co-Chairs: Jessica Mariani
HVEA Engineers
jmariani@hveapc.com

Nick Dandalos
GFT
ndandalos@GFNET.com

Members:

Steven Abbattista	OLA Consulting Engineers, PC
Umit Akkaya	TRC Engineers Inc.
Alzamora	Langan Engineering, Environmental, Surveying, Landscape Architecture and Geology, DPC
Greg Andrus	Lu Engineers
Erich Arcement	Erich Arcement Creative Consulting, Inc.
Christian Arkell	TYLin
Samira Ayati	IVY Engineering Group
Aakash Badjatya	LERA Consulting Structural Engineers
Nicola Belzer	H&H
Gillian Blake	Arup
Donyelle Booker	COWI
Oscar Bustos	STV Incorporated
Rhonda Cardone	Dewberry
Jen Carey	WSP USA Inc.
Brian Crespi	Matrix New World Engineering, Land Surveying and Landscape Architecture
Elias Dagher	Dagher Engineering, PLLC
Nick Dandolo	GFT
Christine Dinisi	HDR
David Dubrow	Jacob, Feinberg, Katz & Michaeli Consulting Group
Lee Ecker	CHA
Ari Eslaminejad	Mueser Rutledge Consulting Engineers PLLC
Eci Gravaito-Bruhn	Arup
Raymond Gradwell	VHB Engineering, Surveying and Landscape Architecture, P.C.
Ed Hosek	P.W. Grosser Consulting Engineer & Hydrogeologist, PC
Jean-Pierre Hourani	Brown and Caldwell Associates

Katherine James	Jacobs
David Kaner	TYLin
Vijesh Karatt Vellatt	Stantec Consulting Services Inc.
Kalpaka Karule	Loring Consulting Engineers, Inc.
Jee Mee Kim	ARCADIS
Timothy Krawetz	Syska Hennessy Group, Inc.
Maxinne Leighton	Jaros, Baum & Bolles
Kyle Lopez	Mott MacDonald
Chanel Lubin	AECOM
Joe Manzella	H2M
Luke Martinek	HDR
Ana Matos	Munoz Engineering, P.C.
Anthony Osterberg	Naik Consulting Group, P.C.
Kabi Pandey	IMEG
Lisa Pompei	STV
Amir Rizavi	VHB Engineering, Surveying and Landscape Architecture, P.C.
Maurice Roberts	STV Incorporated
Thomas Schoettle	CDM Smith
Kamal Shahid	KS Engineers, P.C.
Diana Soldano	Hayduk Engineering, LLC

Public Relations Committee

Chair: Jill Shorter
 Ryan Biggs | Clark Davis Engineering & Surveying, D.P.C.
 jshorter@ryanbiggs.com

Members:

Judy Beckwith	Lu Engineers
Floortje Beemsterboer	Mott MacDonald
Nicola Belzer	H&H
Paige Biancamano	Jacobs
Ellen Bremseth	Milhouse Engineering and Construction, Inc.
Robin Carathanasis	IMEG
Rhonda Cardone	Dewberry
Daniel Colombini	Goldman Copeland Associates, PC
Elias Dagher	Dagher Engineering, PLLC
Elieen Della Volle	KS Engineers, P.C.
Christine Dinisi	HDR
Nicole Dzuba	C&S Companies
Michelle Galindez	Syska Hennessy Group, Inc.
Mary Gallagher	CHA
David Gmach	HDR
Frida Gouldstone	CSA Group NY Architects & Engineers, PC
Ozgur Gungor	Arup
Peggy Gust-Anger	Azar Design Co
Jessie Henschel	Watts Architecture & Engineering, D.P.C.
Molly Hollister	WSP USA Inc.
Deborah Howes	AECOM
Ingrid Kaptein	Ravi Engineering and Land Surveying, P.C.
Jee Mee Kim	Arcadis of New York
Danielle LaBare	Ravi Engineering and Land Surveying, P.C.
Mari Lee	STV Group
Maxinne Leighton	Jaros, Baum & Bolles
Jason Markumas	STV Group
Ana Matos	Munoz Engineering
Kendra McQuilton	Energia USA
Matt Meyer	Pathfinder Engineers & Architects LLP
Lisa Pompei	STV Group

James Powers H2M architects + engineers
Teresa York JMT of New York, Inc.

Recognition Awards Committee

Chair: Christopher LaTuso
HDR
christopher.latuso@hdrinc.com

Members:

Samira Ayati	IVY Engineering Group
Elena Barnett	HDR
Ross Brady	Arup
Sarah Carroll	Creighton Manning
David Dubrow	Jacobs, Feinberg, Katz & Michaeli Consulting Group
Steve Eget	WSP USA Inc.
Ari Eslaminejad	Mueser Rutledge Consulting Engineers PLLC
Donald Flood	Dewberry
Will Flores	STV Incorporated
Jackie Garcia	MP Engineers and Architects
Reza Ghasemi	Mott MacDonald
Frida Gouldstone	CSA Group NY Architects & Engineers, PC
Maxinne Leighton	Jaros, Baum & Bolles
David Liebgold	Michael Baker International, Inc.
Alex Lin	Stantec Consulting Services Inc.
Cristian Liriano	Liriano & Associates Engineering, Consulting Services PLLC
Aileen Maguire Meyer	C&S Companies
Sara Margolis	Dewberry
Melissa Motyl	Jacobs
Guinevere Ngau	HDR
Richard Panchyk	H&H
Scott Smith	CHA
Walt Walker	Greeley and Hansen LLC
Guy Zummo	AECOM

Scholarship Committee

Chair: Arthur Alzamora
Langan Engineering, Environmental, Surveying, Landscape
Architecture and Geology, DPC
aalzamora@langan.com

Vice-Chair: Christina Minkler
JMT of New York, Inc.
cminkler@jmt.com

Members:

Umit Akkaya	M&J Engineering P.C.
Shil Shah-Gavnoudias	AECOM
Gillian Blake	Arup
Wayne Bonesteel	Azar Design Co, Architecture, Landscape Architecture, Engineering and Surveying, P.C.
Mark Butcher	Popli Design Group
Megan Caceres	Syska Hennessy Group, Inc.
Chris Carter	Stantec Consulting Services Inc.
David Chang	LERA Consulting Structural Engineers
Christina Chen	Brown and Caldwell Associates

Courtney Clark	Thornton Tomasetti
Nancy Clark	KC Engineering and Land Surveying, P.C.
Elias Dagher	Dagher Engineering, PLLC
Michael DesRochers	Loring Consulting Engineers, Inc.
Chris Dorman	Michael Baker International, Inc.
Frank Facciolo	Mott MacDonald
Marc Gallagher	Langan Engineering, Environmental, Surveying, Landscape Architecture and Geology, DPC
Sarah Galst	Hazen and Sawyer
Miguel Gaspar	Loring Consulting Engineers, Inc.
Oneil Gayle	Loring Consulting Engineers, Inc.
Ben Geho	Haley & Aldrich of New York, LLP
Leyland George	WSP USA Inc.
Dan Gould	HDR
Wayne Hui	Syska Hennessy Group, Inc.
Sal Iodice	WSP USA Inc.
Zahra Khuwaja	Jacobs
Peter Koklano	LiRo-Hill
Christopher LaTuso	HDR
Kevin Lee	H&H
Cristina Martinez	Bala Consulting Engineers
Mary Mazur	H&H
Jason Messenger	Lu Engineers
Joseph Nafash	STV Incorporated
Natalie O'Rourke	McFarland-Johnson, Inc.
Dharmil Patel	GZA GeoEnvironmental of New York
Mehal Patel	Jaros, Baum & Bolles
Paul Pizzimenti	Haley & Aldrich of New York, LLP
Steve Rahn	JMT of New York, Inc.
John Reddington	Fisher Associates
Shila Shah	AECOM
Chris Sklavounakis	HDR
Maryia Spiridonava	Stantec Consulting Services Inc.
Andrew Suozzi	STV Incorporated
Emma Tucker	STV Incorporated
Jeff Villacres	LERA Consulting Structural Engineers
Joseph Viola	WSP USA Inc.
Edward Watts, Jr.	Watts Architecture & Engineering, D.P.C.
Judy Wu	H&H
Peter Young	Hazen and Sawyer

Scholarship Fund (separate 501c3):

Chair:	Peter Young Hazen and Sawyer pyoung@hazensawsawyer.com
Vice-Chair:	Christina Minkler JMT of New York, Inc.
Secretary:	Christopher LaTuso HDR
Treasurer:	John Evers ACEC New York (Non-voting)
Members:	Elias Dagher Dagher Engineering, PLLC Caitlin DiDonato Stantec Consulting Services Inc.

MEMBER SERVICES DIVISION

Robert Cartwright - Executive Committee Liaison

Budget & Finance Committee

Chair: Robert Cartwright
WSP USA Inc.

Members:

Timothy Bolan	Barton & Loguidice, PC
Edward Bosco	ME Engineers
Josh Rodems	Colliers
Kendra McQuilton	Energia
Lee Ecker	CHA
Kenneth Ellsworth	Keystone Associates Architects, Engineers and Surveyors, LLC
Rashid Shariff	KS Engineers, P.C.
John Davis	Wendel

Investment Committee:

Chair: Brian Miller LaBella Associates, D.P.C.

Members: Nancy Clark KC Engineering and Land Surveying, P.C.
Chuck Kohler STV Incorporated

Business Practice Committees (2)

1) CFO/Controller Committee

Co-Chairs: Robert Brewer
Grassi Advisors & Accounting
RBrewer@grassicpas.com

Darren Alfano
Syska Hennessy Group, Inc.
dalfano@syska.com

Members:

Carol Bermingham	P.W. Grosser Consulting Engineering & Hydrogeologists
Thomas Butcher	STV Incorporated
James Cahill	Watts Architecture & Engineering, D.P.C.
Ted Cordes	CPL
Louis Curatolo	Syska Hennessy Group, Inc.
Scott Dabb	Azar Design Co, Architecture, Landscape Architecture, Engineering and Surveying, P.C.
Patrick DiCerbo	Patrick DiCerbo, Northwestern Mutual
Justin DiLauro	BRAYN Consulting LLC
Daniel DiPace	Creighton Manning Engineering
James Evans	Arup
Dijana Fedyunina	Cerami & Associates, Inc.
Robert Fennessey	HDR
Joseph Ferreira	PKF O'Connor Davies
Ashley Freeman	Popli Design Group
Peter Friebe	IMEG
Maya Gordon	Mott MacDonald
Tom Heim	PS&S
Jolene Jeffe	Nussbaumer & Clarke, Inc.
Laura Kelley	C&S Companies

Steve Kenah	Loring Consulting Engineers, Inc.
Mike Kettell	PKF O'Connors Davies
Paul Levine	LiRo-Hill
John Macy	LERA Consulting Structural Engineers
Richard Maxwell	Barton & Loguidice, D.P.C.
Jason Meinhart	Fisher Associates, P.E., L.S., L.A., D.P.C.
Brian Murphy	CohnReznick LLP
Mia Nadasky	HVEA Engineers
Doug Nelson	CHA
Kriton Pantelidis	Risk Strategies
Mubbashir Raham	ATANE Design and Construction Consultants
Vishnu Ramlagan	AECOM
Vince Reda	Dewberry
Justin Roj	Popli Design Group
Phillip Ross	Anchin, Block & Anchin LLP
Aaron Rupper	Grassi
David Thornhill	AKF Group LLC
David Toole	Fisher Associates, P.E., L.S., L.A., D.P.C.
John Tozzi	Creighton Manning Engineering, LLP
Randy Tuthill	C&S Companies
Mary Alice Tyler	LiRo-Hill
Joan Verbon	Sam Schwartz Engineering, DPC
Anna Volynsky	H&H
Shekhar Yadavalli	Langan Engineering, Environmental, Surveying, Landscape Architecture and Geology, DPC
Patricia Yelner	P.W. Grosser Consulting Engineering & Hydrogeologists
Seth Wolfe	Arup

2) Human Resources Committee

Chair:	Ruthanne Bulman McFarland-Johnson, Inc. rbulman@mjinc.com
Co-Chair:	Vanessa Cifuentes GPI vcifuentes@gpinet.com
Members:	Janelle Alberigo Langan Engineering, Environmental, Surveying, Landscape Architecture and Geology, DPC
	Matt Alboum Dewberry
	Aisha Alexander Loring Consulting Engineers, Inc.
	Amanda Antetomaso LiRo-Hill
	Liza Anzola LiRo-Hill
	Abigail Beckley McFarland-Johnson, Inc.
	Ann Berger Mott MacDonald
	Carol Bermingham IMEG
	Elizabeth Blinn Delta Engineers, Architects, & Land Surveyors, PC
	Heather Blokzyl Hunt Engineers, Architects, Land Surveyors & Landscape Architect, DPC
	Pamela Buckeye Dagher Engineering, PLLC
	Jennifer Carney GHD Consulting Services, Inc.
	Jennifer Chatt CHA
	Mahfuza Chowdhury AKRF, Inc.
	Vanessa Cifuentes Greenman-Pedersen, Inc.
	Jackie Clune CPL
	Monet Dowrich CSA Group NY Architects & Engineers, PC
	Andrea Drapeau Barton & Loguidice, D.P.C.

Patricia Dreste	Syska Hennessy Group, Inc.
Aneta Dzepina	SUPERSTRUCTURES Engineers + Architects
Susan Essaf	AECOM
Dijana Fedyunina	TCT Cost
Samantha Ferrin	LaBella Associates, D.P.C.
Clodagh Fraccari	Jaros, Baum & Bolles
Vanessa Garbo	Arup
Carina Gelok	WSP USA Inc.
Christy Hardwick	Watts Architects & Engineers, D.P.C.
Patrick Ivan	LERA Consulting Structural Engineers
Jamie Judge	AECOM
Keith Kiss	Stantec Consulting Services Inc.
Joshua Lluch	Foundation Risk Partners
Stacy Lombardi	PS&S
Aiko Lum	Arup
Suzana Mayer	H&H
Kathy Metcalfe	CPL
Terry Montague	HDR
Laura Oropeza	C&S Companies
Ann Reis	Creighton Manning Engineering, LLP
Sherry Rettew	Fisher Associates, P.E., L.S., L.A., D.P.C.
Rachel Rodriguez	Langan Engineering, Environmental, Surveying, Landscape Architecture and Geology, DPC
Michelle Scatena Bragg	WSP USA Inc.
Christy Stoebe	Azar Design Co, Architecture, Landscape Architecture, Engineering and Surveying, P.C.
Shelley Tierson	CPL
Aimee Totaro	Jaros, Baum & Bolles
Liz Uzzo	H2M architects + engineers
Amanda Vardakas	H2M architects + engineers
Jennifer Vella	Ramboll
Jillian Winters	PW Grosser Consulting engineer & Hydrogeologist, PC
Srinivas Yenamandra	Mueser Rutledge Consulting Engineers

DMWBE Committee

Co-Chair:

Doreen Taveras
AECOM
Doreen.Taveras@aecom.com

Vice Chair:

Aine O'Dwyer
Enovate
aodwyer@enovateengineering.com

Members:

Maria Alarcon	Dewberry
Carla Solomon-Artis	Stantec Consulting Services Inc.
Samira Ayati	IVY Engineering Group PLLC
Donyelle Booker	COWI
Oscar Bustos	STV Incorporated
Emily Clough	Brown and Caldwell Associates
Jamie Davis	Ryan Biggs Clark Davis Engineering & Surveying, D.P.C.
John Davis	Wendel WD Architecture, Engineering, Surveying and Landscape Architecture, P.C.
J. Evans Doleyres	JED Engineering, P.C.
Cindy Feinberg	Jacob, Feinberg, Katz & Michaeli Consulting Group
Oneil Gayle	Loring Consulting Engineers, Inc.
Alexandra Gore	WSP USA Inc.
Julie Harris	Lu Engineers

Andrew Hollweck	Milhouse Engineering and Construction, Inc.
Cristian Liriano	Liriano & Associates Engineering, Consulting Services PLLC
Radhi Majmudar	Innovative Structural and Specialty Engineering
Mina Malek	PROMINA Engineering PC
Kai Marion	C&S Companies
Bernie McNeilly	Liro-Hill
Kendra McQuilton	Energia USA, Inc.
Sherazad Mehta	Arup
Sanjay Naik	Naik Consulting Group, P.C.
Nagappa Ravindra	Ravi Engineering and Land Surveying, P.C.
Lorraine Reyes	STV
Kimberley Scott	Jacobs
Kamal Shahid	KS Engineers, P.C.
Doreen Taveras	AECOM
Barbara Thayer	PS&S
Roxanna Thomas	Mott Macdonald
Michael Tolliver	KS Engineers, P.C.
Ed Watts, Jr.	Watts Architecture & Engineering, D.P.C.
Jermaine Huell	WSP

Workforce Development Committee

Chair: Arthur Alzamora Langan Engineering, Environmental, Surveying, Landscape Architecture and Geology, DPC

Members:

Ann Berger	Mott MacDonald
Shahien Shirazi Catanio	AECOM
Ray Daddazio	Thornton Tomasetti
Michael DeGaspari	VHB Engineering, Surveying and Landscape Architecture, P.C.
Caitlin DiDonato	Stantec Consulting Services Inc.
Alex Gore	WSP USA
Darryl Johnson	Michael Baker International, Inc.
Jelyssa Little	Jacobs
Craig Ruyle	LiRo-Hill
Natalie Wagner	Fisher Associates, P.E., L.S., L.A., D.P.C.
Cristina Martinez	Bala
Larisa Escalle	GHD
Charles Longworth	GPI
Rajat Jain	Hatch
Jelyssa Little	Jacobs
Patrick Ivan	LERA

GOVERNMENT AFFAIRS I – TRANSPORTATION 1 DIVISION**Oneil Gayle - Executive Committee Liaison**

NYC Department of Transportation Committee (NYCDOT)

Chair: Robert Nadramia
TYLin
Rnadramia@samschwartz.com

Members:

Ayman Baki	Tectonic Engineering Consultants, Geologists & Land Surveyors, D.P.C.
Sam Barkho	STV Incorporated
Robert Nadramia	TYLin
Haluk Cakir	Infrastructure Engineering, Inc., P.C.
Joseph Catapano	LiRo-Hill
Daren Dong	IH Engineers, P.C.
Silvio Garcia	H&H
Dan Maher	PS&S
Jason Stern	Greenman-Pedersen, Inc.
Amir Vizabi	VHB

NYC Economic Development Corporation Committee

Chair: Athena DeNivo
Haley Aldrich
ADeNivo@haleyaldrich.com

Members:

Haluk Cakir	Infrastructure Engineering, Inc., P.C.
Brian Craine	Matrix New Word Engineering, Land Surveying and Landscape Architecture, PC
Roni Deitz	ARCADIS
Athena DeNivo	Haley & Aldrich of New York, LLP
Lian Farhi	TY Lin
Peter Koklanos	LiRo-Hill
Seth Myers	WSP
Gary Rozmus	GEI Consultants, Inc., P.C.
Alok Saha	Naik Consulting Group, P.C.
Ryan White	Jacobs
Alan Zhao	Dewberry

Metropolitan Transportation Authority Committees

Chair, & MTA Transit lead: Sharon Berger
GFT
sberger@gfnet.com

Vice-Chair, B&T lead: Kevin Hussain AI Engineers, Inc, P.C.
Vice-Chair, Rail lead: Jesse Heimowitz Tectonic

MTA Bridges & Tunnels Sub-Committee

Members:

Kevin Hussain (lead)	AI Engineers, Inc, P.C.
John Deerkoski	Thornton Tomasetti
Keith Eichner	H&H
Amr Hafez	KC Engineering and Land Surveying, P.C.
Genaro Velez	COWI
Qi Ye	CHI Consulting Engineers, LLC

Greg Zenk Greenman-Pedersen, Inc.

MTA Rail (MNR, LIRR) Sub-Committee

Members: Jesse Heimowitz (lead) Tectonic Engineering Consultants, Geologists & Land Surveyors, D.P.C.
Eugene Chuang Garg Consulting Services, Inc.
Kurt Goddard AtkinsRealis
John Kennard HNTB New York Engineering and Architecture, P.C.
Jesus Ramirez Jacobs
Kamal Shahid KS Engineers, P.C.

MTA NYC Transit Sub-Committee

Members: Sharon Berger (lead) GFT
Elena Barnett HDR
Joe Fazio LiRo-Hill
Tim Gianfresco AECOM
Helga Junold ARCADIS
Anil Parikh AECOM
Ray Pinto Parsons
Andrew Schueller Malick & Scherer, P.C.
Phil Yartey TYLin

NYS Thruway Authority Committee

Chair: Seth Kaeuper
C&S Companies
skaeuper@cscos.com

Committee:

Wei Cheung Michael Baker Engineering
Craig Cornwell Greenman-Pedersen, Inc.
Todd Gadd Colliers Engineering and Design
John Grady Ravi Engineering and Land Surveying, P.C.
Rob Horr AtkinsRealis
Jeff Johns Stantec
Daniel Levine Parsons

Port Authority of New York & New Jersey Committee (PANY&NJ)
(joint committee of ACEC New York and New Jersey)

New York Chair: David Weiss (New York lead)
WSP USA Inc.
David.weiss@wsp.com

NY Committee:

Robert Baptiste Baptiste Engineering
Shana Beiger GHD
Bruce Lilker IMEG
Cristian Liriano Liriano & Associates Engineering, Consulting Services PLLC
Andrew Malek PS&S
Angel Martinez STV Incorporated
Warren Michelsen Enovate
Linda Reardon NV5

This committee is a joint committee with ACEC New Jersey.

NYS Bridge Authority Committee

Chair: John Paul Cunningham
HDR
JohnPaul.Cunningham@hdrinc.com

Members: Wayne Bonesteel Azar Design Co, Architecture, Landscape Architecture, Engineering
and Surveying, P.C.
Matt Colon Mott MacDonald
Seth Darley Modjeski and Masters, Inc.
Ryan Henderson JMT of New York, Inc.
Erik LeClair CDM Smith
Pasquale Tiano III TRC Companies, Inc.

Gateway Development Committee

Chair of NY: Michael Shamma
Sam Schwartz Engineering, DPC
Michael.shamma@samschwartz.com

Members: Elena Barnett HDR
Richard Cavallaro LiRo-Hill
Craig Covil SI Engineering, P.C.
Mac Gallagher Langan Engineering, Environmental, Surveying, Landscape
Architecture and Geology, DPC

ACEC New Jersey Members:

Overall Committee Chair: Michael Morgan GFT
John Mason Jacobs
Tom Napolitano Greenman-Pedersen, Inc.
Kamal Shahid KS Engineers, P.C.

GOVERNMENT AFFAIRS II – TRANSPORTATION 2 DIVISION

Ashley Freeman - Executive Committee Liaison

NYS Aviation Committee

Chair: Richard Horstmann
Azar Design Co, Architecture, Landscape Architecture, Engineering
and Surveying, P.C.
rhorstmann@foit-albert.com

Members:

Mohammad Ali	Jaros, Baum & Bolles
David Dubrow	Jacob, Feinberg, Katz & Michaeli Consulting Group
Pat Hludzinski	C&S Companies
Kirsten Kennedy	Michael Baker Engineering
Myesha McClendon	Milhouse Engineering and Construction, Inc.
Jeffrey Stoicescu	Langan
Cassandra Wetzel	GZA GeoEnvironmental of New York
Suriel Zayas	Techno Consult Inc.
Rick Zottola	LERA Consulting Structural Engineers

NYS County Highway Superintendents Committee

Chair: Emily Smith
Fisher Associates, P.E., L.S., L.A., D.P.C.
Esmith@fisherassoc.com

Members:

Don Adams	Creighton Manning Engineering
Gerad Bartucci	McLaren Engineering Group
Cristina Donahue	Larson Design Group
Frank Mento	C&S Companies
Laura Sanda	McFarland-Johnson, Inc.
Christopher Sichak	Erdman Anthony
Dave Taillon	LaBella Associates, D.P.C.
Brian Tremblay	Barton & Loguidice, D.P.C.
Brian Tyler	Delta Engineers, Architects, Land Surveyors, & Landscape Architects, DPC

NYS Parks & Recreation Committee

Chair: Robert Cartwright
WSP USA
Robert.cartwright@wsp.com

Members:

Schillivia Baptiste	Laland Baptiste
Sam Bennett	CHA
Michael Hults	IMEG, an IMEG company
Aileen Maguire Meyer	C&S Companies
Patrick McAffrey	Dattner Architects
Sherazad Mehta	Arup

Federal Highway Administration (FHWA)

Chair: Dave Rettig
TYLin
david.rettig@tylin.com

Members:

Robert Gallup	Dewberry
Dan Hitt	Jacobs
Joseph Rigny	Delve Underground Engineering, PLLC
Scott Walker	Urban Engineers of New York, D.P.C.
Lisa Westrick	Stantec Consulting Services, Inc.

NYS Canals/NYPA Committee

Chair: Luke Morenus
CHA
lmorenus@chasolutions.com

Members:

Nathan Buczek	TYLin
Stephen Brard	Haley & Aldrich of New York, LLP
Greg DelMastro	Langan Engineering, Environmental, Surveying, Landscape Architecture and Geology, DPC
Steve Dombrowski	WSP USA Inc.
Benjamin Houston	Groundpoint Engineering, PLLC
Shelly Johnston	Creighton Manning Engineering, LLP
Charles Kahler	Stantec Consulting Services, Inc.
Dan Loewenstein	Arcadis
Zach Monge	Jacobs
Emma O'Brien	Arup
Bill Sprengnether	Fisher Associates, P.E., L.S, L.A., D.P.C.

NYS Department of Transportation Committee (NYSDOT)

Chair: Christina Minkler
JMT
cminkler@jmt.com

Vice Chair: Jim DeKoning
L.K. McLean Associates, P.C.
jdekoning@lkma.com

Members: Wahid Albert	AECOM
Stelios Bertos	Stantec Consulting Services Inc.
Eric Celia	HNTB New York Engineering and Architecture, P.C.
Lee Ecker	CHA
Scott Geiger	WSP USA Inc.
Jack Gorton	HVEA Engineers
Leon Ostrovsky	Dewberry
Karim Palomino	EnTech Engineering, P.C.
Yusuf Poonawala	M & J Engineering, P. C.
Marty Smith	Modjeski & Masters P.C.
James Tantella	Mueser Rutledge
Jamil Yousef	KC Engineering and Land Surveying, P.C.

GOVERNMENT AFFAIRS III – VERTICAL 3 DIVISION**Kabi Pandey - Executive Committee Liaison**

Dormitory Authority of the State of New York Committee (DASNY)

Chair: Anthony Alduino
Dewberry
aalduino@dewberry.com

Members:

Timothy Conlon	PS&S
Andrew Dubel	Lizardos Engineering Associates, P.C.
Kelly Greenfield	H2M Architects, Engineers, Land Surveying and Landscape Architecture
Dianna Keable	VRX
Larry Fitzpatrick	LiRo-Hill
Joshua Zwebach	Cosentini Associates – a Tetra Tech Company

New York City Department of Design & Construction Committee (NYCDDC)

Chair: Wendy Ho
AKRF, Inc.
who@akrf.com

Vice-Chair: Oneil Gayle
Loring Consulting Engineers, Inc.
ogayle@loringengineers.com

DDC Infrastructure Subcommittee

Wendy Ho (lead)	AKRF, Inc.
Samuel Andrews	VRX
Ahmed Bachjawish	Advantage Engineering Associates
Mellanie Bennett-Monclova	Mott MacDonald
Magdy Elkafafi	TRC
Jacob Fradkin	MFS Engineers & Surveyors
Mindy Horowitz	Matrix New Word Engineering, Land Surveying and Landscape Architecture, PC
Matt Nayer	NV5
Sarwat Izhar	SI Engineering
James Quinn	Thornton Tomasetti

DDC Buildings Subcommittee

Oneil Gayle (lead)	Loring Consulting Engineers, Inc.
Fernanda Freitas	Arup
James Harley	Langan Engineering, Environmental, Surveying, Landscape Architecture and Geology, DPC
Chris McDermott	AECOM
Richard Meilan	MG Engineering D.P.C.
Joseph Munafo	Dagher Engineering, PLLC
Joshua Zwebach	Cosentini Associates – a Tetra Tech Company

NYC Housing Authority Committee

Chair: JJ Suarez
CSA Group
jjsuarezjr@csagroup.com

Members:

Sokol Bejleri	GFT
Mark Drozdov	Lozier, Inc.
Andrew Hollweck	Milhouse Engineering and Construction, Inc.
Wayne Hui	Syska Hennessy Group, Inc.
Muhammad Izhar	SI Engineering, P.C.
David Leun	CDM Smith
JJ Suarez	CSA Group NY Architects & Engineers, PC
Vincent Zito	STV Incorporated
Joshua Zwebach	Cosentini Associates – a Tetra Tech Company

NYC School Construction Authority Committee (NYC SCA)

Chair: Joe Tulumello
GFT
JTulumello@GFNET.com

Members:

Unit Akkaya	M&J Engineering
Muhammad Amray	ZOFS Engineering, P.C.
Paul Boyce	PW Grosser Consulting Engineer & Hydrogeologist, PC
Muhammad Izhar	SI Engineering, P.C.
Chas Johnson	Loring
Tricia Quan-Kep	Naik Consulting Group, P.C.
Francisco Ruela	InfoTran Engineers & Architects P.C.
Samuel Singer	Langan Engineering, Environmental, Surveying, Landscape Architecture and Geology, DPC
George Toma	BRAVO Group
Chris Zanoni	LiRo-Hill

NYS Office of General Services Committee (NYS OGS)

Chair: Otto Schwarz
Ryan Biggs | Clark Davis Engineering & Surveying, D.P.C.
Oschwarz@ryanbiggs.com

Members:

Samira Ayati	IVY Engineering Group PLLC
Mike Bogardus	Fisher Associates, P.E., L.S., L.A., D.P.C.
Stephanie Lehn	PS&S
Joseph Manzella	H2M Architects, Engineers, Land Surveying and Landscape Architecture, D.P.C.
Doug Obrist	C&S Companies
Jay Popli	Popli Consulting Engineers & Surveyors
Josh Repp	Colliers Engineering & Design
Alex Strassenburgh	IMEG

State University Construction Fund Committee (SUCF)

Chair: Robert Accosta

Arup
Robert.Accosta@arup.com

Members:

Jan Brath	Fisher Associates, P.E., L.S., L.A., D.P.C.
Jamie Davis	Ryan Biggs Clark Davis Engineering & Surveying, D.P.C.
Steve DiFlora	MG Engineering D.P.C.
Alex Engelman	Syska Hennessy Group, Inc.
Kevin Janik	Watts Architecture and Engineering, D.P.C.
Riza Susel	Lizardos Engineering Associations, D.P.C.

GOVERNMENT AFFAIRS IV – ENVIRONMENTAL/ENERGY 4 DIVISION

Peter Gerbasi - Executive Committee Liaison

US Army Corps of Engineers Committee

Chair: Lisa Dolphin
Colliers Engineering & Design
lisa.dolphin@collierseng.com

Committee: Jennifer Brunton WSP USA
Devin DeMarco First Environment, Inc.
Johanna Duffy Barton & Loguidice, D.P.C.
Jessica Mandrick Gilsanz Murray Steficek LLP
Tim Treharne Arup

NYC Department of Environmental Protection Committee

Chair: David Leun
CDM Smith
leundk@cdmsmith.com

Committee: Tina Colgan Brown & Caldwell
Sarah Cwikla Stantec
Katie Hoek Hazen and Sawyer
Darryl Johnson Michael Baker International, Inc.
Andrew Klimek Watts Architecture & Engineering, D.P.C.
Edmund Lee Arcadis
Dave Leun CDM Smith
Vatche Minassian HDR
Patrick Parault AKRF, Inc.
Lina Posso Carollo Engineers, P.C.
James Roberts H2M architects + engineers
Vincent Rubino Wade Trim NY, PC
Bade Sozer Delve Underground Engineering, PLLC
Julianna Seddio (Emerging Leader Rep) CSA Group

NYS Department of Environmental Conservation Committee

Chair: Mike Musso
HDR
Michael.Musso@hdrinc.com

Members: Kris Almskog PW Grosser Consulting Engineer & Hydrogeologist, PC
Suzanne Bell Haley & Aldrich of New York, LLP
Chris Campbell Hazen and Sawyer
Johanna Duffy Barton & Loguidice, D.P.C.
Dan Hitt Jacobs
Jean Huang Dewberry
Jimmy Ireland Fisher Associates, P.E., L.S., L.A., D.P.C.
Mary Kimball ARCADIS

NYS Environmental Facilities Corporation Committee

Chair: Michael Miller
CHA
mmiller@chasolutions.com

Members:	Christina Hook	Hazen and Sawyer
	Robert Klavoon	Wendel WD Architecture, Engineering, Surveying and Landscape Architecture, P.C.
	Zach Monge	Jacobs
	Eric Pond	Barton & Loguidice, D.P.C.
	William Schneider	PS&S
	Dylan Thisse	Wright Pierce

Energy Committee

Chair: David Pollicino
 IMEG, an IMEG company
 dpollicino@cameronengineering.com

Members:	Greg Bloom	Brown and Caldwell Associates
	Michael Carlson	Energia Engineering
	Elias Dagher	Dagher Engineering, P.L.L.C.
	Greg Delmastro	Langan Engineering, Environmental, Surveying, Landscape Architecture and Geology, DPC
	Carl Ian Graham	CI Graham Sustainable Engineering, P.L.L.C.
	Achim Hermes	Gilsanz Murray Steficek, L.L.P.
	Iljong Kim	CSA Group NY Architects & Engineers, PC
	Carl Mister	Arup
	KC Sahl	VHB Engineering, Surveying and Landscape Architecture, P.C.
	David Straw	JMT of New York, Inc.

If you have any changes or corrections to this list, please email Tina Deale at tina@acecny.org.