



AIA
Brooklyn + Queens
Design Awards
2016

BROOKLYN + QUEENS



DESIGN AWARDS

16

Presented by
AIA Brooklyn Chapter
AIA Queens Chapter

June 2nd, 2016
Vista Skylounge
Long Island City, New York

AIA Brooklyn + Queens Design Awards Gala Program

6:30 PM

Cocktail Reception

7:30 PM

Welcome and Dinner Service

Glen V. Cutrona, AIA

Willy Zambrano, AIA, LEED AP

7:40 PM

BQDA Welcome

David Flecha, Assoc. AIA

Ruben Ramales, Assoc. AIA

7:50 PM

BQDA Awards Presentation

10:15 PM

**BQDA Design of the Year
Presentation**

10:20 PM

Closing Remarks

AIA Brooklyn + Queens Design Awards Committee

David Flecha, Assoc. AIA

Ruben Ramales, Assoc. AIA

Ida Galea, AIA

Richard Kruter, AIA

Jane McGroarty, AIA

Vincent S. Nativio, AIA

Ebru Sulker, Assoc. AIA

BQDA Co-Chair

BQDA Co-Chair

AIA Brooklyn + Queens Design Awards Jury

Manuel Andrade, AIA, LEED AP

John Cutumpas, AIA, NCARB

May G. Kirk, AIA

Michael Shilale, AIA, LEED AP

Jaclyn Taylor, AIA, LEED BD+C

Kenneth Irving Architects

Partner, Lothrop Associates

Senior Architect, RESO E&CS

Partner, Michael Shilale Architects LLP

Contents

- 1 **Welcome from the Chapter Presidents**
Glen V. Cutrona, AIA & Willy Zambrano, AIA, LEED AP
- 2 **Welcome to the Brooklyn + Queens Design Awards!**
- 3 **BQDA Sponsors**
- 4 **2016 Brooklyn + Queens Design Awards**
 - Residential – 1 and 2 Family
 - Residential – Multifamily/Multiple Dwelling
 - Institutional
 - Commercial/Industrial – Small Projects
 - Commercial/Industrial – Large Projects
 - Addition/Renovation
 - Urban Planning & Urban Design
 - Adaptive Reuse/Historic Preservation
 - Interiors
 - Small Firm/Sole Practitioner
 - Local Firm/Local Project
 - Unbuilt
 - Pro Bono
- 28 **About Us**
- 34 **Supporter Advertisements**



@aia_bqda
#bqda16

Welcome from The Chapter Presidents



Glen V. Cutrona, AIA
AIA Brooklyn Chapter
President

Portrait Courtesy of
Gil Vaknin



William Zambrano, AIA
AIA Queens Chapter
President

Portrait Courtesy of
Gil Vaknin

Dear Friends and Colleagues,

It is with great honor that we announce the inception of our annual American Institute of Architects Brooklyn + Queens Design Awards Gala. Both the AIA Brooklyn and Queens Chapters began a discussion last summer about combining the awards programs, and after months of hard work and dedication, tonight we are proud to celebrate our honorees and would also like to thank those who made the event possible: the Design Awards Committee, the dedicated jurors from AIA Westchester + Hudson Valley, our generous sponsors, and everyone else who collaborated with this effort.

Each Design Award celebrates extraordinary architectural projects within Brooklyn and Queens Borough. Tonight, we honor the individual architects and firms of twenty three projects that represent a wide range of building types, sizes and programs.

We would also like to take this opportunity to recognize all of the exceptional architectural talent within the New York City area. Together, with their professional consultants and collaborators, these architects and firms strive to design and create better structures for our built environment, which can be seen by the increase in recent developments over the last ten years.

We thank you for your support of the AIA Brooklyn and Queens Chapters, and for helping us showcase the design excellence within our boroughs.

A stylized, handwritten signature in black ink, consisting of a large loop at the top and a long, sweeping horizontal line extending to the right.

Glen V. Cutrona, AIA
AIA Brooklyn Chapter
President

A stylized, handwritten signature in black ink, featuring a large, bold 'W' and 'Z' followed by a long, sweeping horizontal line.

Willy Zambrano, AIA,
LEED AP
AIA Queens Chapter
President

Welcome to the Brooklyn + Queens Design Awards!

This evening we would like to celebrate the recipients of our excellence and merit awards, and the wonderful work designed by all of you. However, tonight is not just about celebrating architecture. In its inaugural year, the Brooklyn + Queens Design Awards, hosted in unison by AIA Queens and AIA Brooklyn, celebrates a holiday only those growing up within these two boroughs are familiar with: Brooklyn-Queens Day. In addition, we are here to celebrate what makes us different, and what makes these awards so unique.

This year our distinguished jury selected 23 entries in 13 categories from nearly 70 submissions. Amongst the winners, we have a school, a museum, a pharmacy, and a pavilion – just to name a few. And the thread that links each and every one of these accomplished projects is their dedication to the people and their community.

We are taught in architecture school to design spaces for people; but we are also designing a sense of place, an experience! Because when you make the decision to design a space, you are playing a key role in shaping a person's story: the student, visitor, patron, patient, etc., are all affected by what we do.

We are thrilled to celebrate your contributions. Architecture is not just about creating something beautiful, it is about being a part of someone's life. You are all responsible for creating this special environment in which people can live, grow, and share experiences with families and friends. And so, as we eat, drink, and chat among colleagues and friends, let us all remember that our role as an architect is to help improve upon, and influence, a positive change on the world. You are all incredibly important and talented people. For every project you design and construct, you are creating new environments, adding to its history and strengthening the community. And that my friend, is the most important reward you could ask for.

Congratulations to all the winners of the AIA Brooklyn + Queens Design Awards. We hope that you will participate again in the future. Please have a wonderful time tonight.

BQDA Sponsors

AIA Brooklyn and AIA Queens Chapters thank the following organizations for their generosity and support of the 2016 Brooklyn + Queens Design Awards.

BQDA Silver Sponsor



SUPER ENTERPRISES

Distributor of **MARVIN** Window & Door Products



2016 Brooklyn + Queens Design Awards

In its inaugural year, the Brooklyn + Queens Design Awards (BQDA) was established to encourage excellence in architectural design, to raise public awareness of the built environment, and to honor the architects, owners and builders of significant projects within the two boroughs. It is the goal of the AIA Brooklyn and AIA Queens chapters to promote chapter members and affiliates through the display of their design and service accomplishments.

This year's awards are given in ten categories: Residential, Institutional, Commercial/Industrial, Additions/Renovation, Urban Planning & Design, Adaptive Reuse/Historic Preservation, Interiors, Small Firm/Sole Practitioner, Local Firm/Local Project, Unbuilt, and Pro Bono. Each category was reviewed by a jury of our AIA colleagues in the Westchester + Hudson Valley Chapter. Each juror reviewed and considered projects per their design quality, functional utility, economy, environmental harmony, sustainability, accessibility, aesthetic delight, creativity, craftsmanship and innovation which helped them determine the awards given for Excellence and Merit.

Spungen Residence

Baxt Ingui Architects

BQDA Award of Excellence

Residential - 1 or 2 Family



Baxt Ingui Architects transformed this historic row house into a super energy efficient “passive house” – the first to receive certification in a New York City Historic District. Many thought that passive house requirements, and the Landmark Preservation Commission’s adherence to historic window details, were incompatible. The architects successfully exceeded the expectations of both entities by designing a home that is both modern and historic.

The creation of a nearly double height kitchen at the lower rear provides a spacious, light-filled room, and is an elegant solution to the problems all row houses face of having the kitchen and the living room on different floors. A graceful curvilinear stair connects the upper levels, addressing the client’s desire for openness in their home. Baxt Ingui deserves credit for managing the complexity of passive design and providing an attractive home for their clients.

Location: Brooklyn Heights, Brooklyn, New York

Client: David and Aliana Spungen

Team: Michael Ingui, RA AIA, Amy Failla, Will Conner

With: Shawn Henderson, Interior Designer; Eoin Kileen, Kleen Construction; Robert Divilio, PE, RJD Engineering; Ronald Carr, PE, D’Huy Engineering; Ovitay W. Samandasa (Mechanical Sub); Donato Plumbing & Heating; Sam McAfee, Passive House Consultant, SG Build; Bob Ryan, Tomas O’Leary, Passive House Academy; Kevin Brennan, Air Sealing & ERV Installer; Gabe Shrem, Temple Woodworks.

Photo: Baxt Ingui Architects, P.C.

Knapp Residence

Baxt Ingui Architects

BQDA Award of Merit

Residential - 1 or 2 Family



In this townhouse renovation, Baxt Ingui Architects nearly doubled the size by adding a floor and a rear addition. The meticulous renovation is evident throughout, and provided the owners with a bigger home.

The ground floor has a large family room opening to the rear yard, a laundry room, and a complete private guest suite. The first (parlor) floor houses a large living room and a kitchen/dining area that has a curved staircase, leading to the ground floor. The architects removed the front stair between the ground and first floor, utilizing the found floor space for a powder room and coat closet. One flight up is the bedroom floor, featuring a master suite with two walk-in closets, full bath, and a double height sky lit office. There are two bedrooms and a bath in the front of the house at this level. The third floor

has a study with a bar sink and a powder room plus a roof deck. In addition, the house was renovated to passive house standards, requiring 70% less mechanical equipment and duct work. And best of all, the architects maintained the existing historic character requested by the clients.

Location: Carroll Gardens, Brooklyn, New York

Team: Michael Ingui, RA AIA, Frankie Failla, Will Conner; Heather Tilev, Interior Design, BIA Interiors

With: Peter McLoughlin GC, P Joe Design; Robert Divilio, PE, RJD Engineering; Sam McAfee, Passive House Consultant, SG Build

Photo: Baxt Ingui Architects, P.C.

78S3

Zambrano Architectural Design

BQDA Award of Excellence

Residential – Multiple Family/Multiple Dwelling



This reinterpretation of the urban townhouse in South Williamsburg, Brooklyn demonstrates that modern design can be as contextual as the replication of an older building. In the three family project Zambrano Architects used scale, massing and materials to create a simple and stylish alteration to an existing building.

The warm glazed finish on the basement and first floor echoes the brownstone base often used on brick houses in the past. The traditional stoop, entrance, and front yard enclosure have been reconfigured to provide privacy for the residents while keeping a sociable facade to the street. The upper stories present a carefully detailed combination of large glass openings with vertical and horizontal bands of stucco. Glass panels at the sliding doors create “Juliet” balconies that don’t obstruct the rhythm of the front and rear façades.

Location: Williamsburg, Brooklyn, New York

Client: Red Rock Investments

Team: Willy Zambrano, AIA, LEED AP, Daniel Barrenechea Assoc. AIA, Nancy Guzman Assoc. AIA

With: Celin Munoz PE (Structural)

Photo: Evan Joseph

3030 West 32nd Street

Corporate Design of America

BQDA Award of Merit
Residential – Multiple Family/Multiple Dwelling



Adjacent to the renowned Coney Island Boardwalk, this vibrant low scale residential project is an attractive newcomer to the area. Having surmounted the hurdles of the NYC Special Waterfront Zoning requirements, and the unique weather conditions (sun, salt, moisture, and wind), architect Robert Palermo and his team have designed a well-planned building that takes advantage of the great views around it.

The brick and sandy-colored EIFS facades reflect the context of nearby brick apartment houses and the beach sand on the other side of the Boardwalk. The architects took care to mitigate the sun, using balconies or overhangs and carefully planned windows. The site plan and floor plan are thoughtful and attractive. Especially of note is the through-lobby corridor and the resulting central location of the elevator and one set of stairs. As a result the corridor lengths on the floors above are much shorter than found in most double loaded corridor projects. Overall, this playful building epitomizes everything a beach front property should be.

Location: Coney Island, Brooklyn, New York

Team: Robert J Palermo AIA, Ewelina Ludwikowska, Tatiana Potapova, Julia Rata

With: Metrotech Construction GC; LK Design Bureau; Levin Engineering

Photo: Corporate Design of America

Primary School 330Q

Murphy Burnham & Buttrick Architects

BQDA Award of Excellence

Institutional



The design of this primary school in Queens elevates institutional architecture, which can often be dreary and monotonous, into a dynamic and joyous place. The building intentionally engages the street with extensive glazing and an ample lobby that leads to the common spaces. The lobby, furnished with benches, serves as a social space for parents and children. The basement gymnasium is bathed in natural light and can be seen from the street as well as the lobby above. In addition, the corridors and stairwells on the upper floors have natural light as well. Although the materials and furnishings are appropriately durable, the architects cleverly used wood slatted ceilings and bold color to create warm and lively spaces throughout.

Together with an intelligent site plan and a LEED Certified Equivalent, this new school has proved very popular with area parents and has a wait list for kindergarten this year.

Location: Corona, Queens, New York

Clients: NYC Department of Education and NYC School Construction Authority

Team: Jeffrey Murphy, AIA LEED AP, Partner in Charge, Mary Burnham, Design Partner, Jose Miranda, Project Architect, Yougiao Kahng, AIA, LEED AP, Project Architect and Site Representative, Giang Le, Site Representative

With: T .A. Ahern Contractors Corp.; Joseph Loring & Associates; Robert Silman Associates; Langan Engineering; Slocum Consulting; Van Deusen & Associates; AKRF Inc.; Berzak/ Schoen; Cerami & Associates; Romano Gatland

Photo: Ty Cole/Chuck Choi

The Noguchi Museum

Sage and Coombe Architects

BQDA Award of Merit

Institutional



This is an appealing project on many levels: it's a museum for one of the greatest sculptors of the 20th century, Isamu Noguchi, who himself began the museum at this location; it was a long term project with three phases; and it was incredibly challenging. Sage Coombs Architects have done exactly what Noguchi would have done had he had the funds during his lifetime.

Much of the space feels raw and untouched, albeit heated, lighted, fire-rated and structurally sound on 900 new piles. The new insertions – a cafe and gift shop, a new entry pavilion, and an exquisite upper gallery – are sensitive and respectful. The clients: The Noguchi Museum, the New York City Department of Cultural Affairs, and the NYC DDC, were stalwart partners in this project but, the real clients are the hundreds of Noguchi sculptures that are fortunate to have this museum as their home.

Location: Long Island City, Queens, New York

Client: The Noguchi Museum, NYC DDC, NYC Department of Cultural Affairs

Team: Jennifer Sage, FAIA, LEED AP (Principal), Peter Coombs AIA, LEED AP (Principal), Kit Yan, Project Manager; Project Designers: Greta Modesitt, Cory Schneider, Sam Loring

With: Arnell Construction, Alcon Associates, Plaza Construction, NSP Construction; James Gainfort; Weidinger Engineers; Hage Engineering; ADS Engineers; Bladykas Engineers; Matthews Nielsen Landscape Architects; Bille Cohen, LTD; Davis Mackiernan Lighting Design; George Sexton Associates Lighting Design

Photo: Sage and Coombe Architects

Belle Harbor Chemists
New York Design Architects
BQDA Award of Excellence
Commercial/Industrial – Small Projects



This project is an inspiring collaboration between a local business owner and a perceptive architect who understood that architecture is more than simply making a building. Belle Harbor Chemists, a long-time fixture in Rockaway Beach, needed to relocate. Joseph Smerina used the apothecary store and the history of Rockaway Beach as inspiration for the design which, in many ways, is the antithesis of the modern drug store.

This handsome brick structure, with industrial steel glazing and a large canopy, successfully evokes the materials and craftsmanship of an older aesthetic. A passerby can see into the building from the street, and once inside is not dwarfed by a towering maze of tall shelves found in many chain drug stores. The interior is furnished with corrugated steel, polished concrete floors, reclaimed wood and large historic photos of Rockaway Beach. Mr. Smerina merits recognition for creating a “place” in the community.

Location: Belle Harbor, Rockaway, Queens, New York

Client: Belle Harbor Chemists

Team: Joseph J. Smerina

With: Capezzano Construction Corporation

Photo: Deborah Matlack

Lot 5 Lounge

David Cunningham Architecture Planning

BQDA Award of Merit

Commercial/Industrial – Small Projects



Lot 5 Lounge is a nightclub that was created within a windowless plumbing warehouse. Located one block from Domino Sugar – a large waterfront project, architect David Cunningham and his team have created a multi-level experience with interesting views. The design of the project was a process of subtraction: the removal of a portion of the front wall to create a swinging window. This revealed the inside spaces while giving customers a sidelong view of the Williamsburg Bridge. Roof rafters were removed in order to create an outdoor experience visible from the bar, at the street level. The rafters were milled and repurposed as wall and ceiling finishes.

The clients discovered a painted tag on one of the rafters indicating it was from “Lot 5.” The label was preserved and used at the entrance, and became the inspiration for the name of the lounge. The red color was adopted for the bar stool cushions and the sprinkler pipes. A comfortable, and quirky space, Lot 5 Lounge is a satisfying amalgam of hip and gritty.

Location: Williamsburgh, Brooklyn, New York

Client: Aelea Brittingham + Uk Seo

Team: David Cunningham AIA, Svetlana Shausmanova, Zim Seferi, Irene Barber

With: Barry Structural Engineering PLLC; M A Rubinao PC; Day Elevator + Lift

Photo: David Cunningham Architecture Planning

The Royal Palms Shuffleboard Club

Andre Tchelistcheff Architects

BQDA Award of Excellence

Commercial/Industrial - Large Projects



As the first shuffleboard club in New York and the largest indoor facility in the country, The Royal Palms inhabits a former die-cutting factory in Gowanus, Brooklyn. The building was dilapidated and had little in the way of modern infrastructure. The task of outfitting 17,000 square feet, even at the most minimal level, can quickly strain a budget. The architects designed a wooden perimeter platform containing plumbing, mechanical and electrical elements. It was a strategic move that dramatically reduced construction costs but, more importantly, provided a viewing platform and social space for eating and drinking. The minimal vertical separation gives the shuffleboard courts a special focus in what had been a large, undifferentiated factory space. Mr. Tchelistcheff and his team delivered a chic and thoughtful project for their client - on time and within budget. And, according to Instagram and Facebook, Royal Palms is a highly popular place to go!

Location: Gowanus, Brooklyn, New York

Client: Jonathan Schnapp

Team: Andre Tchelistcheff AIA, Eric Hildebrandt, Vova Minakov

With: Greenlight Construction Management, GC; Murray Engineering; Bodak-Cameron Engineering

Photo: Travis Magee

Genesis Renal Services

Zambrano Architectural Design

BQDA Award of Merit

Commercial/Industrial - Large Projects



People who need renal dialysis typically go three times a week for about three hours for their treatment, all too often to a dreary poorly designed facility. Genesis Services engaged Zambrano Architects to design a dialysis center that would contribute to patients' well-being during their treatment. Dialysis centers must be designed to New York Department of Health standards. One of the critical requirements is that all patients must be visible from all nursing stations. Zambrano Architects began by planning for the large treatment area and situated it to take maximum advantage of the natural light on both sides of the building. Two strategically placed nursing stations ensured full visibility of every patient.

Zambrano Architects transformed the former brick industrial building into a pleasing experience for patients by the use of color and graphics, playful lighting design with a glowing floating ceiling and with ample natural light. Particularly notable is the striking façade renovation that showcases Genesis Renal Services. The project was completed in a short time period and within budget.

Location: Glendale, Queens, New York

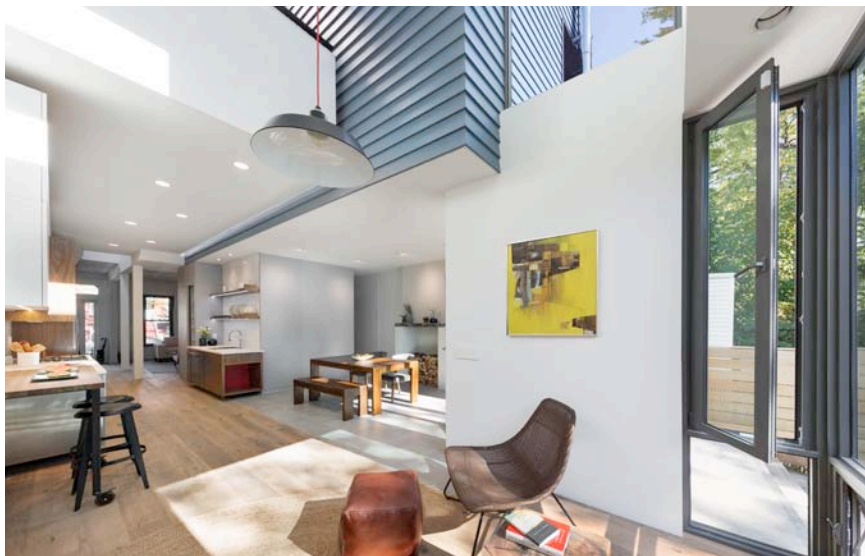
Client: Genesis Services LLC

Team: Willy Zambrano, AIA, LEED AP, Daniel Barrenechea, Assoc. AIA, Ebru Sulker, Assoc. AIA

With: G. Fazio Construction Co; Celin Munoz PE; Greg Mortman PE

Photo: Patrick Lee, AIA

PorchHouse
noroof architects
BQDA Award of Excellence
Additions/Renovations



Traditionally, Brooklyn was the borough of stoops - the exterior masonry stair that led to the parlor floor. PorchHouse, a two story wood house dating from 1879, is an example of the use of a covered front porch, more commonly found in suburban and rural dwellings. The architects carefully restored the front porch and used it as an inspiration for a “back porch”- a new enclosed double height space leading to the south facing rear yard. The exterior siding that wraps around and into the new porch helps blur the distinction between inside and outside.

The floor plan is thoughtful and flexible, providing spaces that could be used for different purposes. The architects have successfully combined historic and modern details to create a comfortable living space. The second floor contains three bedrooms, a study overlooking the porch, a laundry and two bathrooms. The architects, in a gutsy move, ran the exterior metal chimney up the rear passing in front of the master bedroom, framing the view in a unique manner.

Location: Bedford Stuyvesant, Brooklyn, New York

Client: Margarita McGrath

Team: Margarita McGrath AIA LEED AP, Scott Oliver AIA LEED AP, Kristin Washco

With: Greatwill Construction, GC; Celin Munoz PE; D'Antonio Mechanical Engineering; Katherine Aul, Staghorn NYC, Site Consultant

Photo: Chuck Choi

South Slope Townhouse

Etelamaki Architecture

BQDA Award of Merit

Additions/Renovations



A limited budget does not have to be a deterrent for good design, as architect Jeff Etelamaki has proved with his design of this Brooklyn townhouse. Located in an area known as South Park Slope, the surrounding context is a mix of industrial and eclectic townhouses with more than a sprinkling of vinyl or aluminum siding. The clients wanted an airy modern house but were on a strict budget.

The existing three family house was transformed into an owner's duplex and a ground floor rental apartment. The façade is a combination of corrugated steel, perforated aluminum panels backed painted red panels, and windows of varying sizes. The result is a visually balanced and striking street presence. Inside the building, Mr. Etelamaki managed to provide a three bedroom, three bath owner's apartment with a full living room that is not part of the dining room

and kitchen – an amenity that has become rare in developer real estate world.

The master bathroom features a custom steel and glass door to the bathroom, allowing for an open feeling to the suite. The judicious use of some original building features adds to the lively design, echoing the previous incarnation of the house. This project should be an inspiration to anyone seeking an economical, livable and well-designed home.

Location: South Park Slope, Brooklyn, New York

Team: Jeff Etelamaki AIA, Principal, Project Designer: Mayumi Tomita, Shenier Torres

With: Blue Sky Design

Photo: Etelamaki Architecture, PLLC

The Brooklyn Strand

WYZ architecture + urban design

BQDA Award of Excellence

Urban Planning/Design



The Brooklyn Strand was commissioned by the Downtown Brooklyn Partnership to develop design strategies to enhance the connectivity between Downtown Brooklyn, the Brooklyn waterfront, and the surrounding neighborhoods. WYZ Architecture + Urban Design's task was to evaluate and assess the existing conditions as well as engage the stakeholders. The study area is situated at the nexus of Brooklyn's transportation systems, and the team has taken up the challenge of creating a strand.

In Phase 1 of the project, WYZ studied three nodes along the Strand for possible interventions. As an example, Borough Hall Park is currently not experienced as a park or a gateway to downtown because it is a parking lot for Supreme Court judges. The WYZ team proposed putting the parking below ground and creating a new iconic structure that will serve pedestrians, area workers, and residents more suitably.

Location: Downtown Brooklyn, New York

Client: Downtown Brooklyn Partnership

Team: Principals – Claire Weisz FAIA, Mark Toes, AIA, Layng Pew AIA, Adam Lubinsky PhD AICP; Project Team: Jacob Dugopolski, Paul Van Der Grient, Maiko Shimizu, Mathew Suen, Olivia Lerner

With: Mathews Nielsen, Doming Gonzalez Associates, Sam Schwartz Engineering

Photo: WXY architecture + urban design

The Queensway Plan

DLANDstudio Architecture + Landscape

WXY architecture + urban design

BQDA Award of Merit
Urban Planning/Design



QueensWay was envisioned as an exciting opportunity to convert an abandoned elevated railroad corridor that stretches from Ozone Park to Rego Park in Queens. The Trust for Public Land commissioned DLANDstudio and WXY to develop a vision plan for a new linear park corresponding to the abandoned elevated Long Island Railroad right-of-way.

The planning and design team studied the entire length of the site and created a vision that responded to the three major geographic segments of the railway which will be developed into a 47 acre park. It was necessary to identify the physical characteristics of the railroad structure as it threaded through various neighborhoods. Additionally the team collected data on topography, ecology, and land uses as well as stakeholder and NYC agency outreach. This compendium of information generated a two stage design process that identified programmatic strategies for the park. Their concept was to create moments of pause, of ecology, of connection, and of exercise along the Queensway spine.

Location: Ozone Park, Queens, New York

Client: The Trust For Public Land

Team: DLANDstudio Architecture + Landscape, Susannah C. Drake, principal; Halina Steiner; WXY Architecture + Urban Design, Adam Lubinsky; Alice Shay

With: Hester Street Collaborative; Weidinger Associates; Sam Schwartz Engineering; Renfro Design Group; Gleeds; eDesign Dynamics; HR&A Advisors; Gayron De Bruin; Sabir, Richardson, Wiesberg

Photo: DLANDstudio Architecture + Landscape Architecture PLLC

The Dudley

NV/design.architecture

BQDA Award of Excellence
Adaptive Reuse/Historic Preservation



Built in 1902 as a student nurses residence for Long Island College Hospital, The Dudley was an important structure in the Cobble Hill Historic District. Later it was renamed the Lamm Institute and served children with disabilities. Eventually it was abandoned by the hospital and sold to three individuals who wished to create residences within the existing structure. The architects' brilliant solution was to divide the building vertically into three "townhouses" which made it easier to preserve the historic exterior features while creating three unique residences within.

The facade was cleaned and new historically appropriate windows were installed. The center unit is entered through an existing doorway for which a new door was fabricated based upon a historic newspaper sketch. The other two units have their entrances on the sides of the building. The fact that most people don't realize that the building has a new use shows the success of this project and an example of historic preservation at its best.

Location: Cobble Hill, Brooklyn, New York

Clients: 118: Alain Kodsi; 114: Richard Petersen; 355: William Tancredi

Team: Thomas van den Bout AIA, Brenda Nelson, RA, Mark Vilasin

With: Taocon Construction; Old City Construction; LMW Engineering Group, Tina Manis, Interiors (Center Unit)

Photo: NV/design.architecture, PLLC

Liberty View Industrial Plaza

Zambrano Architectural Design

BQDA Award of Merit
Adaptive Reuse/Historic Preservation



In the category of “they don’t build ‘em like this anymore,” Liberty View Industrial Plaza (formerly The US Navy Fleet Base Storehouse No.2) was built in 1921 as a military storage and distribution warehouse that takes up an entire city block. It is located in the heart of Brooklyn’s former industrial waterfront adjacent to Sunset Park, an area that is being revitalized for diverse, dense, and environmentally sustainable industry.

Zambrano Architects was retained to restore and adapt the building for light manufacturing and retail. The owner, Salmar Properties, sought to develop and preserve the building in order to be eligible for historic tax credits. After careful research, the architects restored the important historical features, such as the façade, its large industrial windows (which were replaced with energy efficient ones), and mushroom columns. The new public lobbies and elevators are modern in design and restrained enough to allow the robust architectural feature of this industrial giant of a building to shine.

Location: Sunset Park, Brooklyn

Client: Salmar Properties LLC

Team: Willy Zambrano, AIA, LEED AP, Daniel Barrenechea Assoc. AIA, Nancy Guzman Assoc. AIA

With: Phoenix Network LLC, GC; Titan Engineers; MGEngineering

Photo: Patrick Lee

House in the Woods

Robert Schultz AIA

BQDA Award of Excellence

Small Firm/Small Practitioner



The House in the Woods is an object lesson in impeccable site design when the site lacks an iconic view. Architect Robert Schultz created a new landscape using a carefully sculpted mound and distinct views – to the house, through the house and from the house. Its plan is deceptively simple; a main living block with two angled wings – a garage and guest complex at the entrance to the site, and the other wing housing the bedrooms. The subtlety of the design emerges through the use of materials, the window placement, and the roof design. The major fenestration is in common living areas, oriented to an outside terrace and an elevated pool and pool house beyond. However, the so-called “secondary windows” have been precisely designed and placed for maximum effect, naturally reinforcing the complexity of the site design. The selection of materials, mainly cedar and limestone, suggests but does not mimic the outdoor surroundings and are used on the exterior and interior seamlessly. Their considerable restraint in this project results in a style that is both contemporary and timeless.

Location: Water Mill, New York

Team: Robert Schultz AIA, Vrinda Khanna

With: Mannix Custom Builders; Julie Farris (Landscape); Ross Dalland PE; Condon Engineering; Summerhill Landscapes (Landscape Installation)

Photo: Scott Frances

NASA Orbit Pavilion

Studio KCA

BQDA Award of Merit

Small Firm/Small Practitioner



Studio KCA was commissioned by NASA to design a travelling pavilion where the invisible sounds and trajectories of 19 NASA satellites orbiting the Earth could be experienced. NASA wanted a structure that is easily demountable and could travel around the country as a teaching tool to demonstrate NASA's mission in space.

Architects Jason Klimoski and Lesley Chang envisioned a giant chambered nautilus that would convey the sounds of space, much as a natural shell conveys the sound of the sea. They designed a pavilion that has a 30 foot diameter "room" with an oculus at the center. A structural frame holds 72 laser cut aluminum panels that are scribed with over 100 orbital paths. Twenty-four speakers inside the sphere broadcast sounds assigned to each of the 19 satellites that are orbiting the earth. The beauty and the science of this project make it very special.

Location: Multiple Locations

Client: NASA (National Aeronautics and Space Administration)

Team: Studio KCA; Jason Klimoski AIA, Lesley Chang

With: Arup Sound Lab; Robert Silman Associates; Shane Myrbeck (ARUP-Sound Composition)

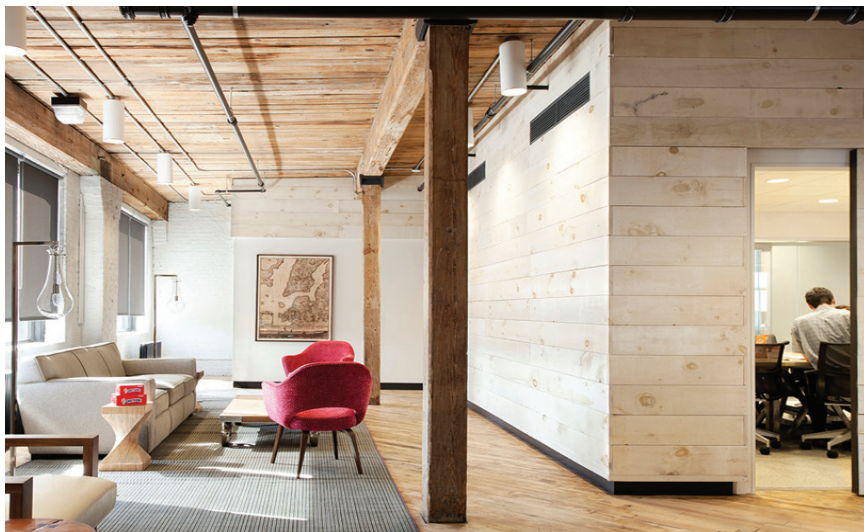
Photo: StudiokCA

Cumberland Packing Offices

CWB Architects

BQDA Award of Merit

Interiors



Cumberland Packing is a corporation that has operated in Brooklyn for over fifty years, its most notable product being Sweet n' Low. Changes in manufacturing caused the company to close its core business. Brendan Coburn of CWB Architects was hired to provide a master plan for converting their five story historic warehouse into new corporate offices, with an accessible green roof, and a museum showcasing industries within the Brooklyn Navy Yard. This project – three floors for corporate offices – was designed to acknowledge and celebrate the building's past, while introducing a modern sensibility and up-to-date infrastructure. The offices have been thoughtfully planned to take advantage of natural light. To the extent possible, materials and products were sourced from local manufacturers and vendors, continuing the notion of 'Made in Brooklyn' into the 21st century.

Location: DUMBO, Brooklyn, New York

Client: Cumberland Packing

Team: Brendan Coburn AIA, Partner in Charge; Project Team: Jesse Fearins, Yuliya Illzarove, Abdour Ndoeye; Interior Design: Fearins & Welch, Erin Fearins; Catherine Brophy

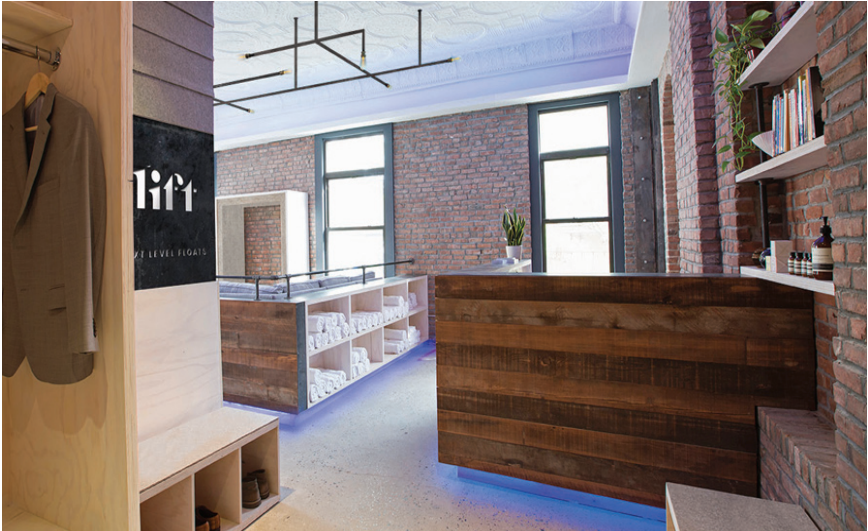
With: R P Brennan General Contractors and Builders, GC, Cumberland Packing; Grigg & Davis Engineers; Altanova Energy + Sustainability, LEED Consultant; J Callahan Consulting, Expediter

Photo: Rachael Stollar

Lift Next Level Floats

590BC

BQDA Award of Merit
Local Firm/Local Project



Lift Next Level Floats is a sensory deprivation spa that utilizes salt water tanks (float rooms) in which clients experience weightlessness and darkness for a period of an hour. Architect Bronwyn Bretiner was engaged to research this type of therapy and to provide a vision and branding through the design of this new prototype in Brooklyn. The second floor location of the space presented structural and acoustical challenges that the architects were able to overcome.

The design theme reflects the program in which there is a progression from the bright windowed reception area to the private rooms. A blue light at floor level marks the circulation path and becomes brighter as one comes closer to the darker private rooms. After emerging from the floatation tank, clients spend time in a decompression lounge which provides a gentle transition back to the stimuli of life.

Location: Carroll Gardens, Brooklyn, New York

Client: Lift Next Level Floats

Team: Bronwyn Bretiner AIA, Luigi Ciaccia, Anny Chang

With: Downtown Complete GC; Lost and Found (Branding Team); Watson Engineering; Pavane and Kwalbrun Consulting Engineers; Harvey March Berling Associates (Acoustical Consultant)

Photo: 590BC

Tensegrity Bridge

Atelier Architecture 64

BQDA Award of Excellence

Unbuilt



This bridge project was a competition entry for the Salford Bridge Competition held in 2013. Salford is a town in the United Kingdom located in the borough of Manchester. It is situated on the meander of the Irwell River and the competition's aim was to provide a connection between the town centre and a large green space called the Meadow which sits between two sides of the oxbow formed by the river. Mr. Anzalone produced an elegant tensegrity structure which combines tension cables and isolated structural compression members that act biomechanically. Buckminster Fuller and sculptor Kenneth Snelson were the first to employ tensegrity as a construction form.

The unique design needed only one pier on each side of the riverbank, thus fulfilling the requirement that the waterway remain untouched. Its light airy appearance is an effective counterpoint to the nature of the Meadow and the surrounding Victorian townscape.

Location: Salford Meadows, United Kingdom

Team: Phillip Anzalone AIA, Stephanie Bayard, Brian Vallario, Vida Chang

With: Will Laufs PE, Laufs Engineering Design

Photo: Atelier Architecture 64

1/9d

SYNQ

BQDA Award of Merit

Unbuilt



The project is an entry to a competition sponsored by Emerging New York Architects (ENYA) for the redesign of an abandoned elevated railway station in Ozone Park, Queens. The impetus for the competition was the QueensWay project, a plan for a linear park along the entire length of the unused rail line. The elevated station is wide at this location, providing an opportunity for a variety of activities and design schemes.

This entry, mysteriously called SYNQ, provides several distinct entry points: two ramps at an open market area, one that meanders and the other direct. In the central portion of the project, the designers proposed a wide landscaped “waterfall” stair. Wisely, the programming is left flexible with spaces for music, performance and various cultural activities. A sinuous perforated metal skin on outer ramp and the upper level is an effective “sign” to announce its presence in the community.

Location: Ozone Park, Queens, New York

Client: Friends of the Queensway

Team: Nickolas Batis, Assoc. AIA; Bonnie Netel; Ruben Ramales, Assoc. AIA; David Flecha, Assoc. AIA.

Photo: 1/9d

Gelsey Kirkland Arts Center Andre Tchelistcheff Architects

BQDA Award of Merit
Pro Bono



There are certain commissions that an architect might find hard to refuse even when there is little or no fee involved. The design of a new dance studio and performance space for the Gelsey Kirkland Arts Center is an example of a creative project that can be very satisfying for a designer. Andre Tchelistcheff and his team adapted spaces in a converted DUMBO warehouse that had been used as a retail furniture store and an adjacent playhouse.

The playhouse stage, an attractive existing amenity, was not large enough for the client's needs. The folding door system expands the length of the stage for rehearsals or performances. At other times the doors can be closed to create additional studio spaces. The build-out also included a lobby area, changing rooms and administrative offices. This inventive project resulted in a flexible, bold, and utilitarian solution for its owner.

Location: DUMBO, Brooklyn

Client: Gelsey Kirkland and Michael Chernov

Team: Andre Tchelistcheff AIA, Dermal McCrear

With: Ruben's Group Inc (Contractor); Nickerson Corporation, (operable stage wall); Murray Engineering (Structural)

Photo: Travis Magee

About Us

Based in Washington, D.C., the AIA has been the leading professional membership association for licensed architects, emerging professionals, and allied partners since 1857.

Our Goal

With nearly 300 state and local chapters, the AIA serves as the voice of the architecture profession and the resource for our members in service to society.

We carry out our goal through advocacy, information, and community.

Each year the AIA:

- + Sponsors hundreds of continuing education experiences to help architects maintain their licensure
- + Sets the industry standard in contract documents with more than 100 forms and contracts used in the design and construction industry
- + Provides countless Web-based resources for emerging architecture professionals
- + Conducts market research and provides analysis of the economic factors that affect the business of architecture
- + Hosts the annual AIA National Convention and Design Exposition
- + Serves as an advocate of the architecture profession
- + Promotes design excellence and outstanding professional achievement through an awards program

source: www.aia.org



AIA Brooklyn

Of the 300+ chapters comprising the American Institute of Architects nationwide, the Brooklyn Chapter founded in 1894, was the seventeenth AIA Chapter to be established. Its formation was unusual for the time. The Institute was struggling to establish itself as the sole national organization of architects; most chapters were centered in major cities and were widely dispersed throughout the country. Our founding fathers felt that Brooklyn was large enough to be independent from the New York chapter.

Few chapter records remain of those early years. Institute archives show that, because of distance and lack of interest, many chapters managed to meet only yearly, if at all. Yet the monthly Brooklyn chapter meetings were always lively social affairs with program speakers and elaborate dinners. Also documented were yearly boat outings to the beaches and pleasure palaces of Long Island. Up until World War I, the chapter held yearly exhibitions of architectural work at the Brooklyn Museum.

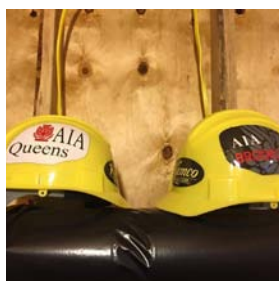
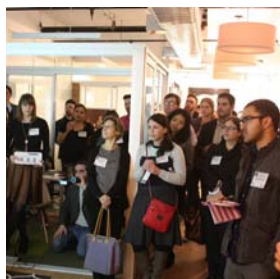
In 1944, the chapter established a foundation to further the profession of architecture and held annual dinner dances to fund scholarships for architecture students. In 1957, in association with the centennial of the national Institute, the chapter celebrated its five hundredth meeting with a gala dinner at the Granada Hotel. In 1967, the Brooklyn Society of Architects joined the chapter.

Throughout the last one hundred and ten years, chapter members and their firms have left a legacy of public and private buildings. Members have participated in the civic life of the city and state, lobbying for changes in government and in its regulations. They've promoted aesthetic values through competitions and exhibitions and sought to inform the public on the role of architecture. But, most of all, they have continued the chapter in the spirit of fellowship that has been evident good since its founding.

2016 AIA Brooklyn Chapter Executive Board

Glen V. Cutrona, AIA
Vincent S. Nativo, AIA
Patricia E. Sears, AIA
Keith C. Barnes, AIA
Ida Galea, AIA
Susana Honig, AIA
Gerald I. Goldstein, AIA
John H. Hatheway Jr., AIA
Pamela Weston, Assoc. AIA

Chapter President
Chapter President-Elect
Chapter Treasurer
Chapter Secretary
Chapter Immediate Past President
Chapter Administrative Director
Chapter Director
Chapter Director
Chapter Director





AIA Queens

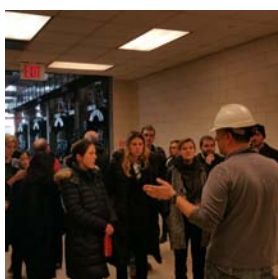
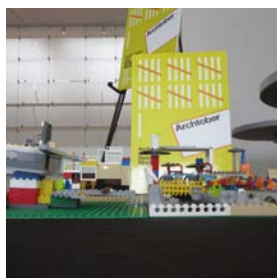
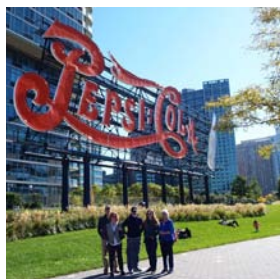
Founded in 1945, the AIA Queens Chapter currently has 325 members located throughout the borough of Queens. The chapter was originally the Queens Society of Architects, established in the 1930's, which then became a member of the American Institute of Architects on October 30, 1945. The American Institute of Architects (AIA), founded in 1857 in New York, is a nationwide, 86,000 member based organization.

The AIA National headquarters are now located in Washington, DC. The AIA Queens Chapter is also part of the region covered by AIA New York State, located in Albany, which has a statewide membership of 8,000 members in 13 chapters and speaks for the interests of all registered architects in New York State. The city of New York has five local chapters, or components, representing each borough of the city. The AIA Queens chapter proudly celebrated its 50th Anniversary in 1995 with a Proclamation from the NYC Council, a Declaration of Honor from the Queens Borough President's Office, and a Certificate of Congratulations from AIA NYS. AIA Queens continues to actively address local issues of importance to architecture in the great borough of Queens.

2016 AIA Queens Chapter Executive Board

Willy Zambrano, AIA
Anastasios Giannopoulos, AIA
William Villacres, AIA
Adedosu Joshua, AIA
Gino Longo, AIA
Ruben Rames, Assoc. AIA

Chapter President
Chapter Vice President
Chapter Treasurer
Chapter Secretary
Chapter Immediate Past President
Chapter Managing Director



Supporter Advertisements

We would like to thank our sponosrs as this program would not be possible without your generous support of the 2016 AIA Brooklyn + Queens Design Award

CELEBRATING 25 YEARS OF ENGINEERING SUCCESS

Proud supporter of AIA Brooklyn and Queens.

Congratulations to all the 2016

AIA Brooklyn + Queens Design Awards Recipients.

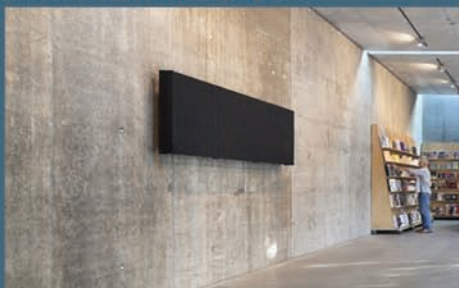




congratulates
the awards
recipients



DUMBO lofts, lit by Edison Price Lighting fixtures.



MOMA PS1, lit by Edison Price Lighting fixtures.



View local artwork exhibited at the Edison Price Lighting Gallery in LIC



and thanks all AIA
Brooklyn + Queens
architects for creating
visionary spaces
in our home city.

You're invited! Light in Action: a free lighting education

Master lighting and dimming techniques and technologies in just 2 hours.

June 7th (9-11am; breakfast served), or June 9th (3-5pm; cocktail reception)

Visit www.epl.com to learn more. Email norav@epl.com to RSVP.



Edison Price Lighting designs and manufactures the highest-quality lighting solutions, including recessed and track fixtures, track systems, wallgrazing systems. Our factory and office is proudly located in Long Island City, Queens.

*We congratulate all the 2016 AIA
Brooklyn & Queens Design Awards Recipients!*



The Contractors Source

Serving the NY/NJ Metropolitan Area Since 1939

**One Stop Source for All Your
Building Supply Needs.**

On-site, On-Time Delivery



Brooklyn
80 21st Street,
Brooklyn, NY 11232
718-768-1234

Manhattan
506 West 21st Street
New York, NY 10011
212-736-7350

Long Island
301 Robbins Lane
Syosset, NY 11791
516-935-8660

Kamco Supply of NJ, LLC
845 East 25th Street
Paterson, NJ 07513
973-247-1234

**BOOM UP TO
10 STORIES**

Kamco.com



CONGRATULATIONS TO THE 2016
DESIGN AWARD RECIPIENTS!



Builder: Seven Custom Homes, Austin, TX

YOUR REPUTATION STANDS ON A NAME
So Does Ours

MARVIN 
Windows and Doors
Built around you.®

For more information, contact

SUPER *ENTERPRISES*

Distributor of **MARVIN** Window & Door Products

800-48MARVIN

ELLIOT RIVERA
erivera@supermarvin.com

MIKE MITCHELL
mmitchell@supermarvin.com

STEPHANIE RICCARDI
sriccardi@supermarvin.com

NOW LEASING

160,000 RSF PER FLOOR

LARGEST OPEN FLOOR PLATE IN NEW YORK CITY

LIBERTY VIEW INDUSTRIAL PLAZA

BROOKLYN'S FIRST STATE-OF-THE-ART MODERN INDUSTRIAL AND TECH CENTER



**CONGRATULATIONS WILLIAM ZAMBRANO AND
ZAMBRANO ARCHITECTS FROM ALL OF US
AT LIBERTY VIEW.**



- \$100M COMPLETE RENOVATION
- CENTRAL HVAC, 11 AUTOMATIC FREIGHT ELEVATORS, 6 PASSENGER ELEVATORS, 3 LOBBIES, BACK-UP GENERATOR, AND FIOS PRE-WIRED THROUGHOUT
- MAJOR TAX INCENTIVES

**LIBERTY VIEW
INDUSTRIAL PLAZA**

850 Third Avenue
Brooklyn, NY 11232

718.369.8900

salmarproperties.com

INDUSTRIAL LEASING:

Kalmon Dolgin Affiliates, Inc.
Jeffrey I. Unger
917.971.0995

Newmark Grubb Knight Frank
Jordan A. Gosin
212.372.2289

Congratulations to all AIA award winners!



Providing structural engineering services to Brooklyn and Queens for 25 years.

CONGRATULATIONS
DAVID CUNNINGHAM
ARCHITECTURE PLANNING

FROM YOUR FRIENDS & SUPPORTERS
at BARRY STRUCTURAL ENGINEERING



brooklyn-based structural engineering
and special inspections

135 amity street, brooklyn ny 11201
718-916-9787

barrystructural.com



AIA
New York State

AIA NY S

September 29 - October 1, 2016

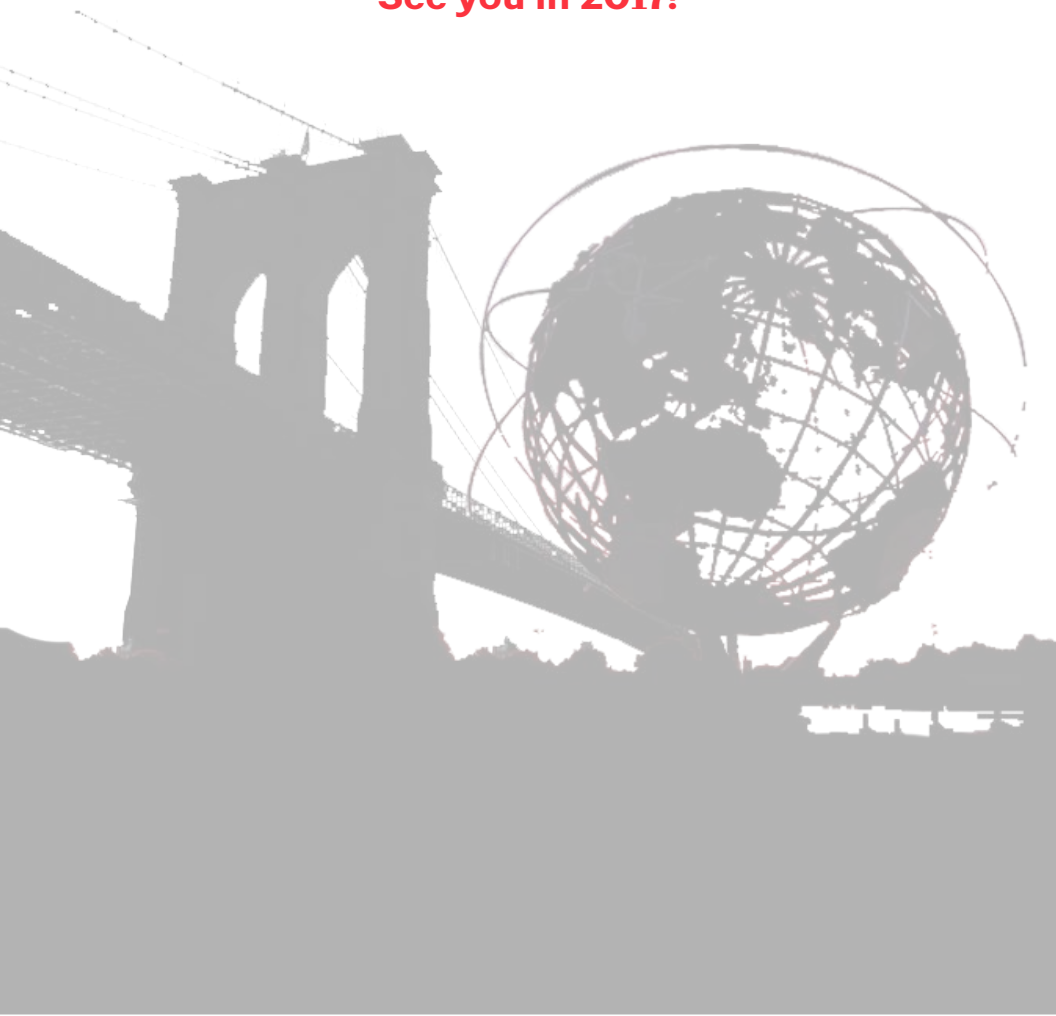
**Saratoga
Design
Conference**

Saratoga Springs, New York

**Thank you for being part of the
AIA Brooklyn + Queens Design Awards 2016**



**Congratulations to all the winners!
See you in 2017!**





@aia_bqda
#bqda16



AIA
Brooklyn

www.aiabrooklyn.org



@aiabrooklyn



AIA
Queens

www.aiaqueensny.org



@aiaqueens