



LaGuardia New Math Sequence to Accelerate
Student Completion at Scale

Milena Cuellar, Jeanne Funk, Dong Wook Won,
Abderrazak Belkharraz

S006 AMATYC 2018

Our Profile

19K Students Credit Enrolled in Fall 2017



58% Female
42% Male

About 67% with
Family Income
Less than \$25,000

Asian	21%
Black	18%
Hispanic	49%
White	11%
Other	1%

96 different countries

About 53% students are younger than 23

The Developmental Math Challenge

Nation-wide

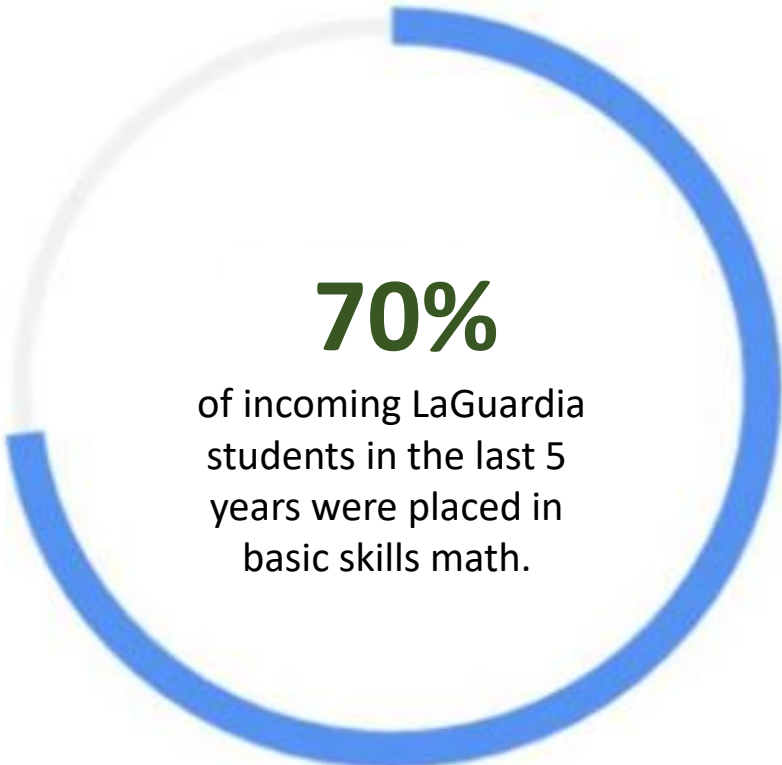


60-70%
of community college students need at least one developmental math course before enrolling in college-credit courses

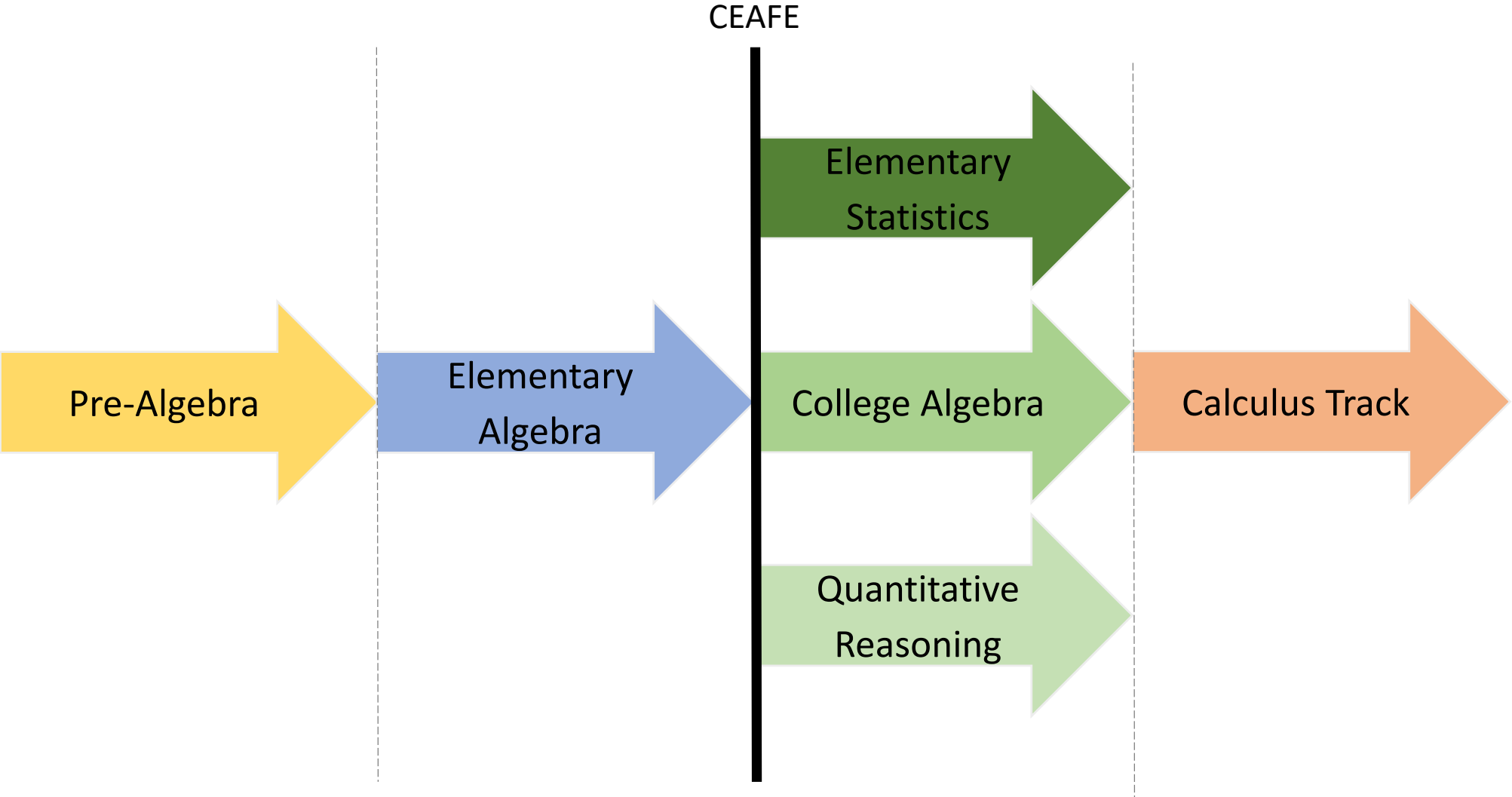


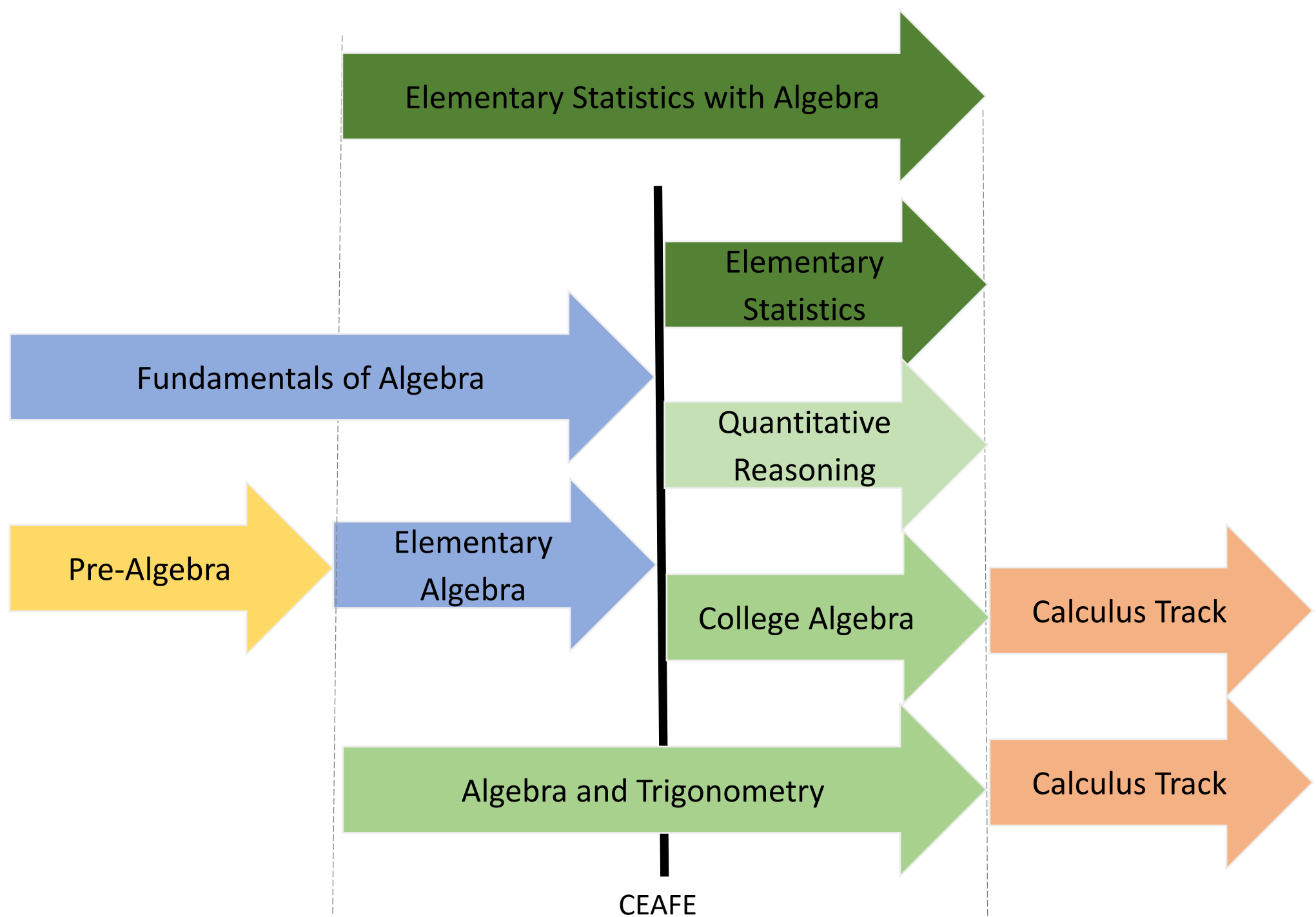
80%
of those students never get out of the developmental math pathway

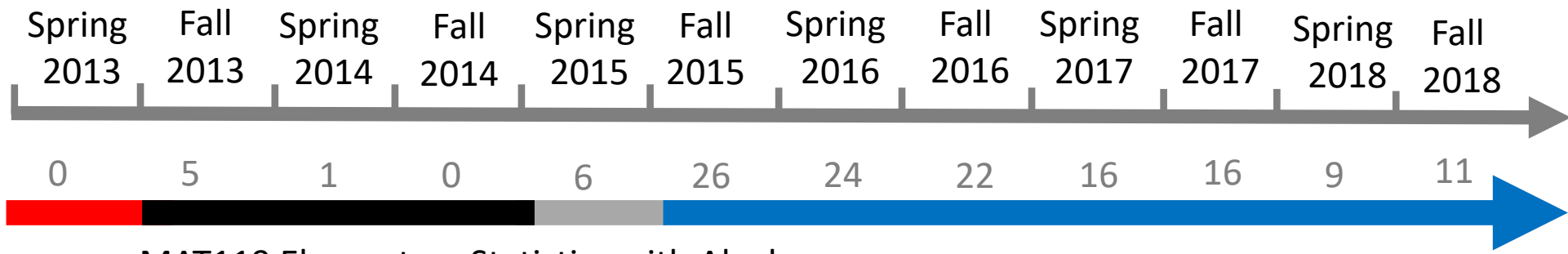
LaGuardia



70%
of incoming LaGuardia students in the last 5 years were placed in basic skills math.







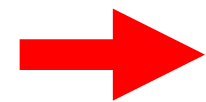
MAT119 Elementary Statistics with Algebra



MAT 117 College Algebra and Trigonometry



MAT 099 Fundamentals of Algebra



MAT 123 QR

Design Phase

Pilot Phase

Permanent Phase
(small scale)

Permanent Phase
(large scale)

Co-Requisite Implementation Planning

- What are the sequences of mathematics courses in your institution?
- Identify points where your mathematics sequences could be adapted to include co-requisite model courses.
- How many sections would you like to offer of the co-requisite courses identified in 2?
- What challenges do you anticipate in a full-scale implementation of co-requisite courses?

Co-Requisite Algebra + Statistics at Scale Challenges

Bringing the whole system together

Professional
Development

Full-Scale

New Pedagogy

Student Support

Engagement

Use of Technology

Scheduling
Faculty + Load

Co-Requisite Algebra + Trig at Scale Challenges

Course Design

Student Support

Transfer and Articulation

Professional Development

Use of
Technology

Scheduling

Content Volume

Fundamentals of Algebra

Challenges

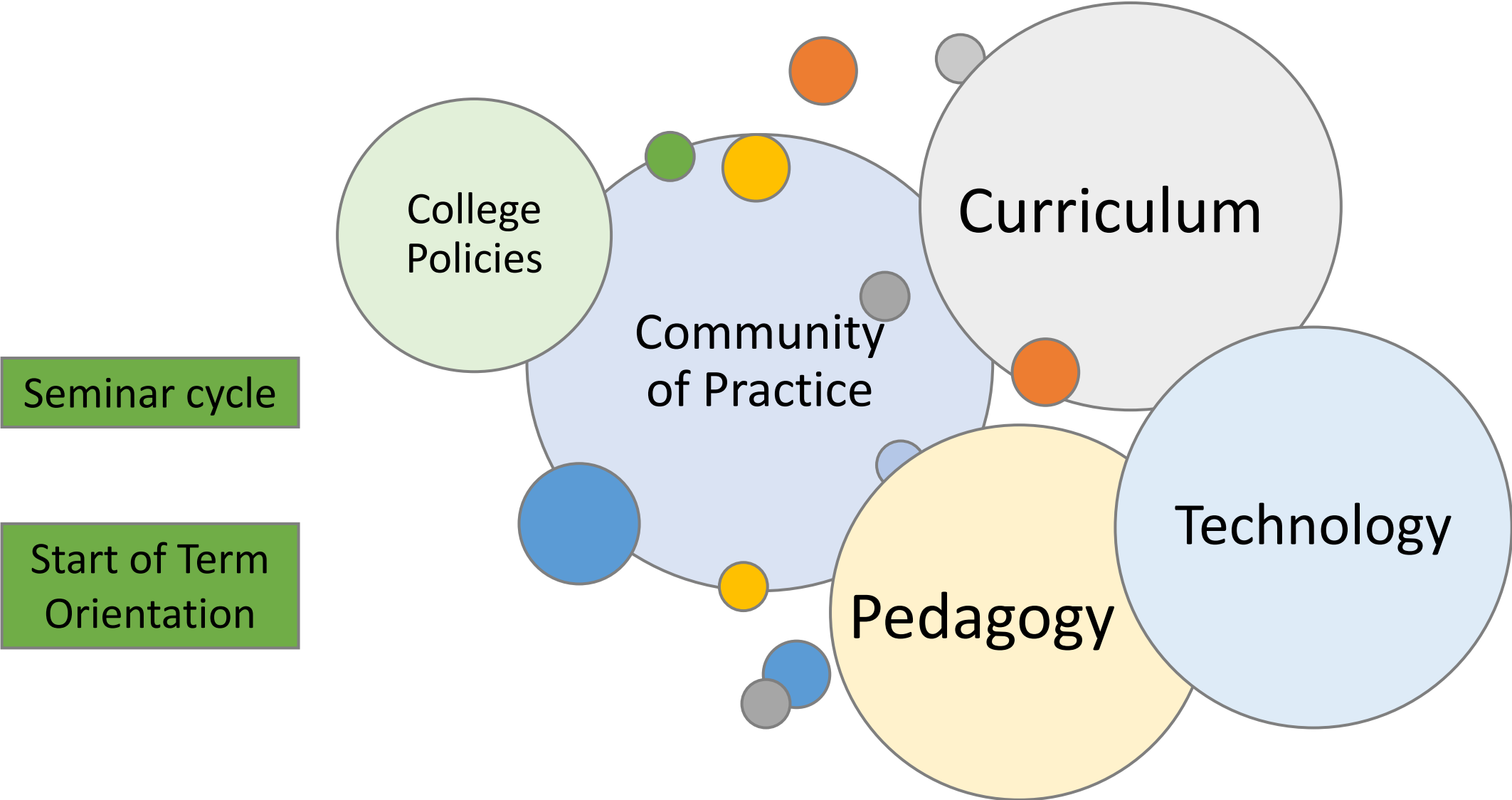
Streamlining the course content

Computer Platform

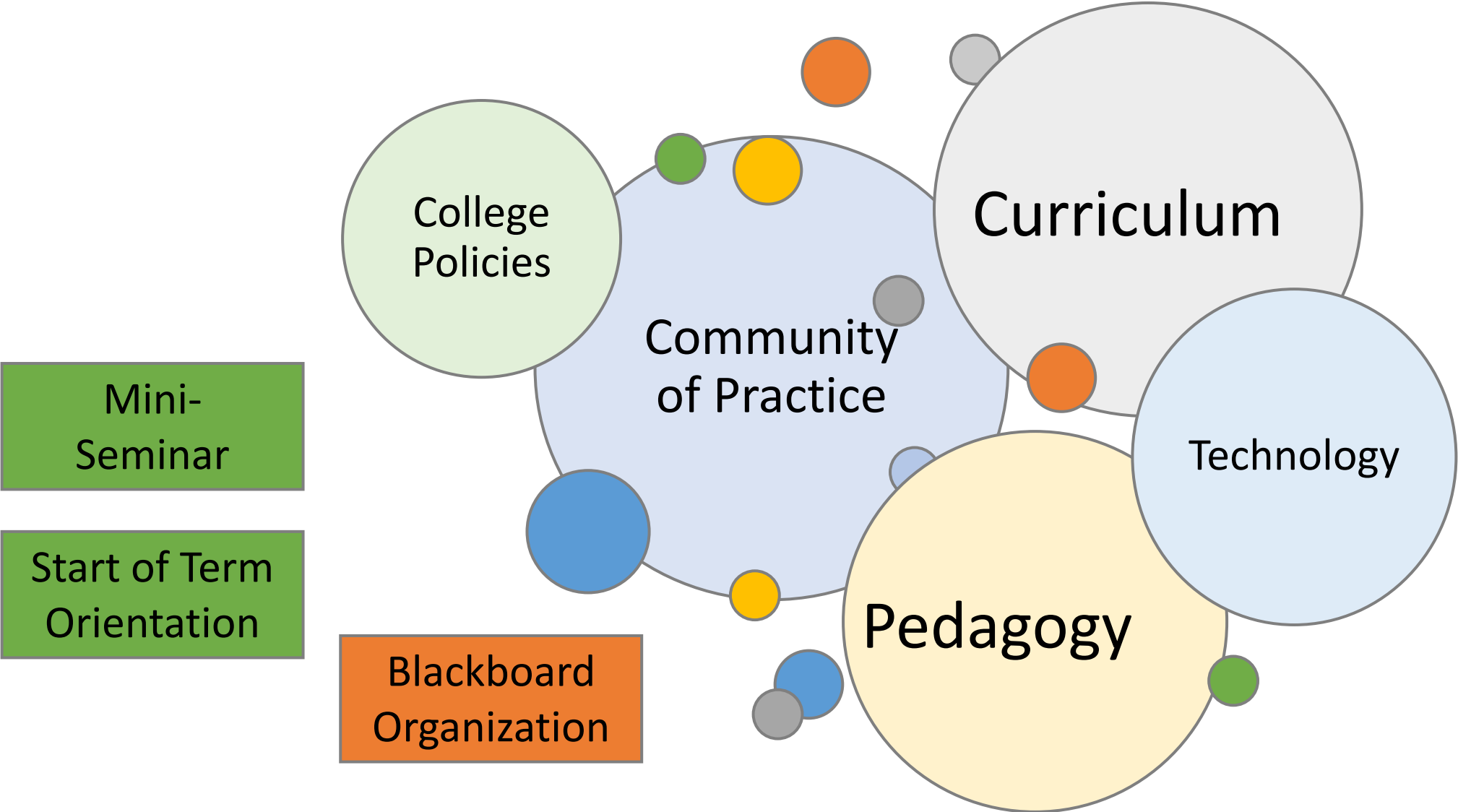
Reinforce student learning

Professional Development

Co-Requisite Algebra + Statistics Faculty Development

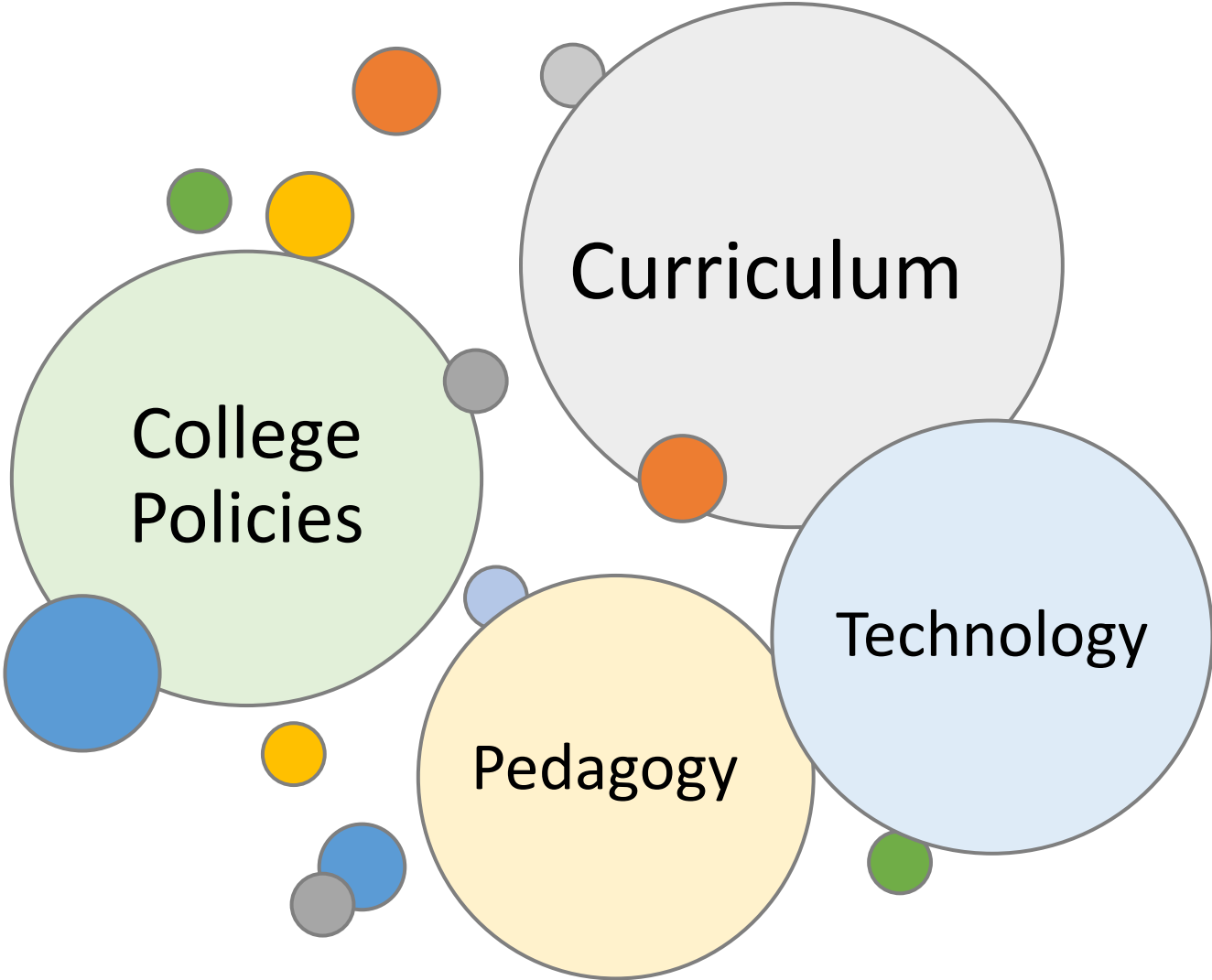


Co-Requisite Algebra + Trig Faculty Development



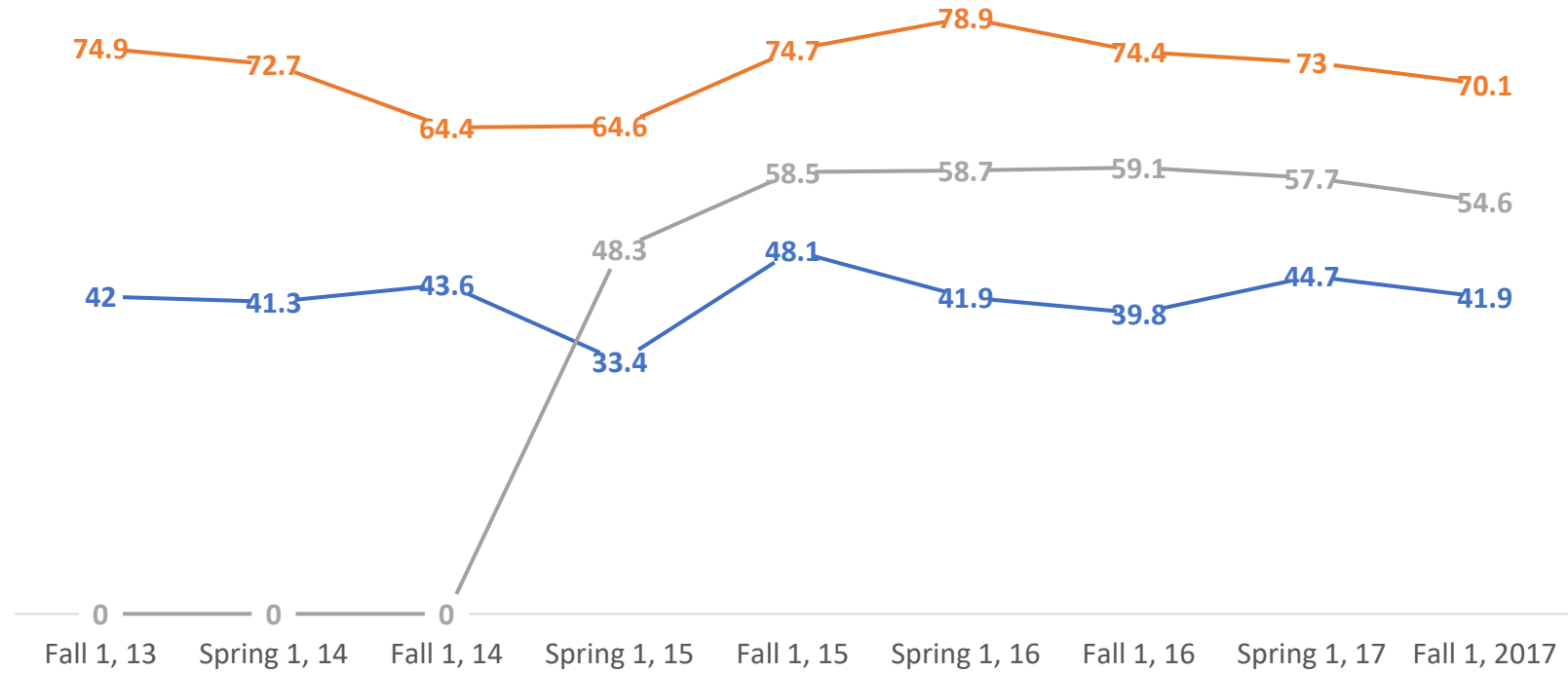
Fundamentals of Algebra Faculty Development

Start of Term
Orientation



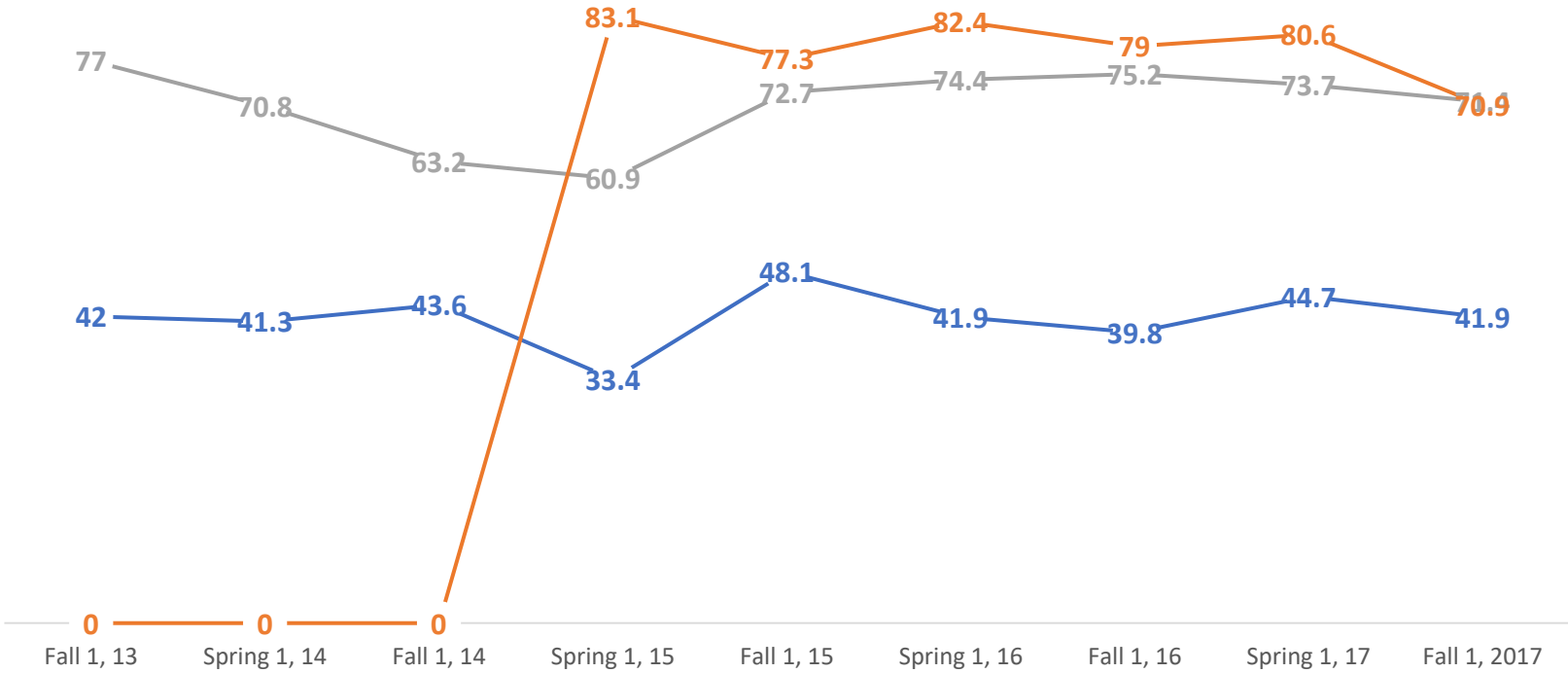
PASS RATE – ELEMENTARY ALGEBRA PLACEMENT - STEM

— MAT 096 — MAT 115 — MAT 117



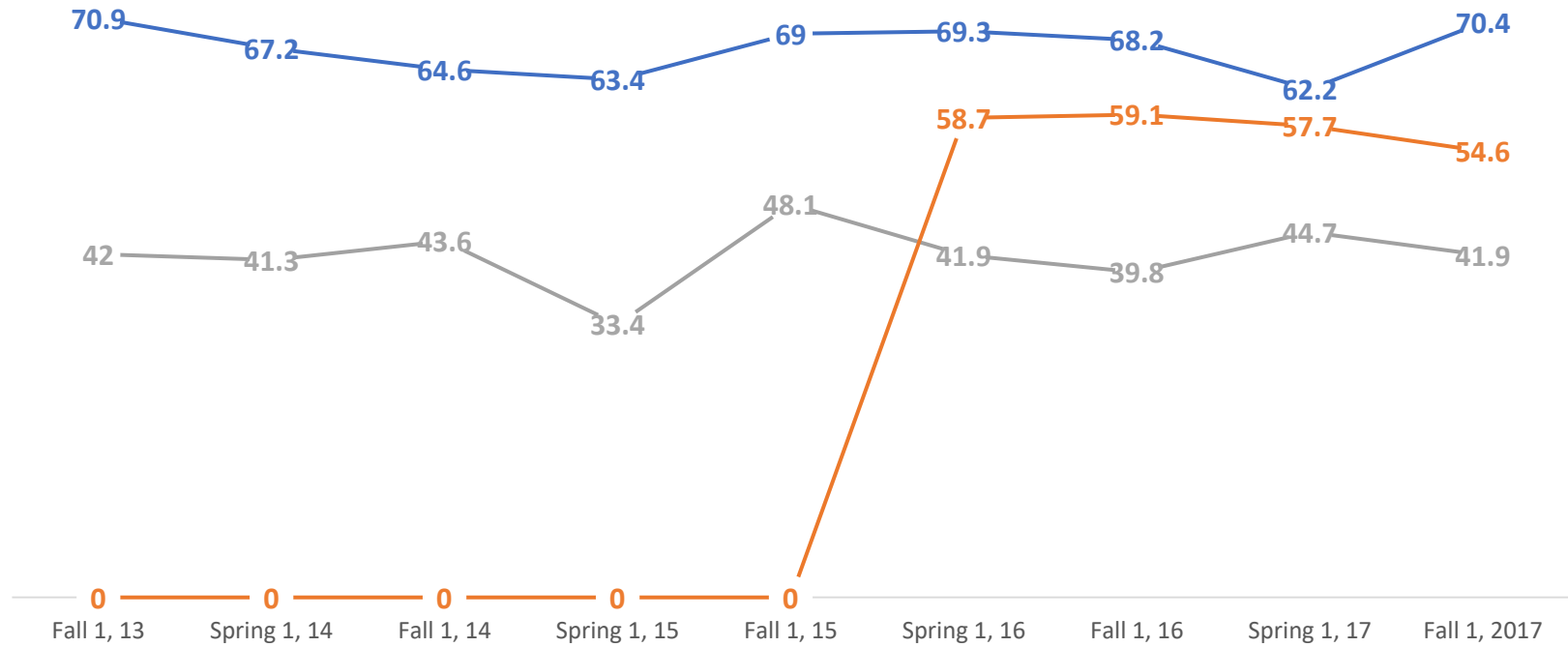
PASS RATE – ELEMENTARY ALGEBRA PLACEMENT - NON STEM

— MAT 096 — MAT 120 — MAT 119

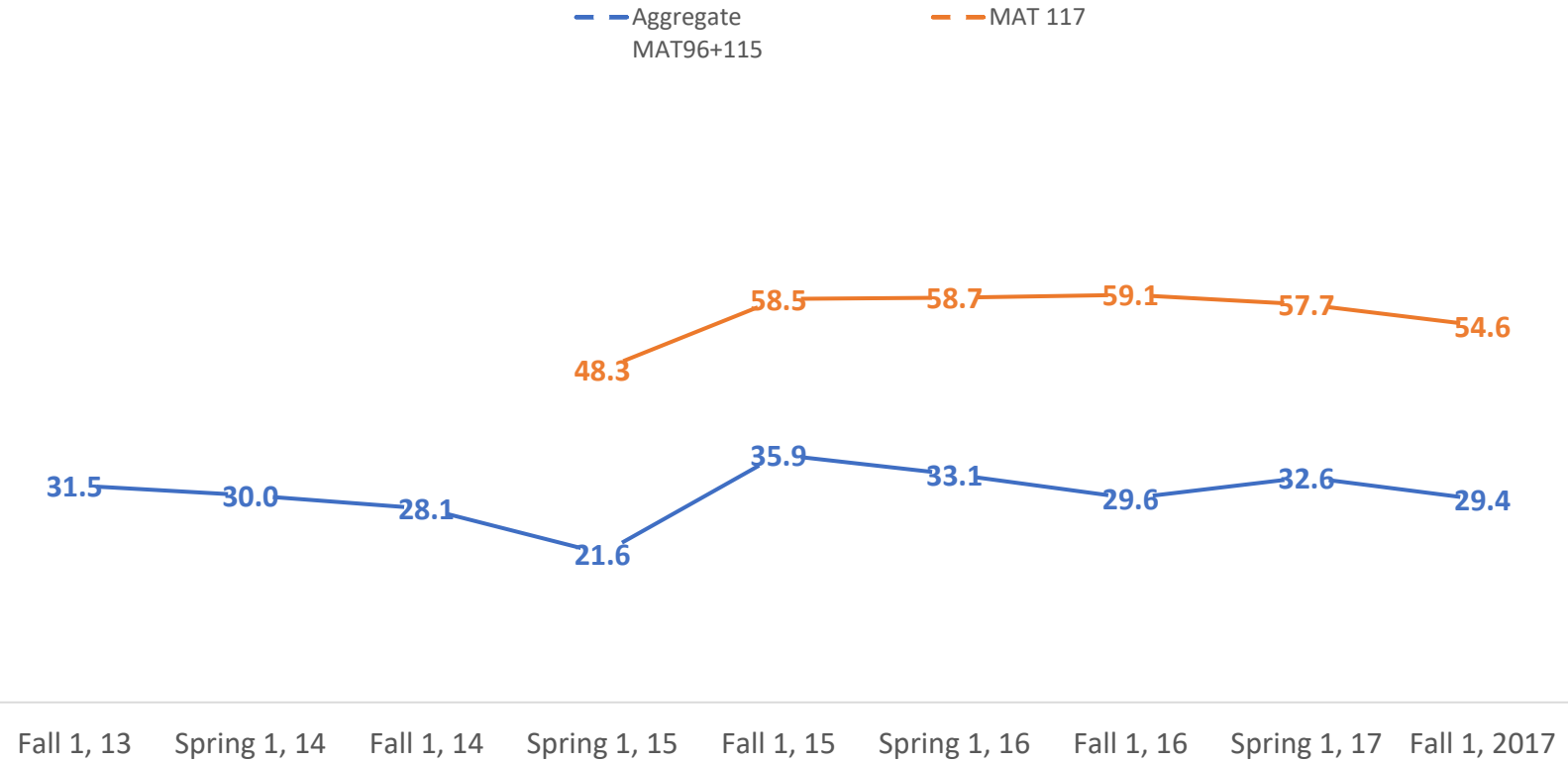


PASS RATE – PRE-ALGEBRA PLACEMENT

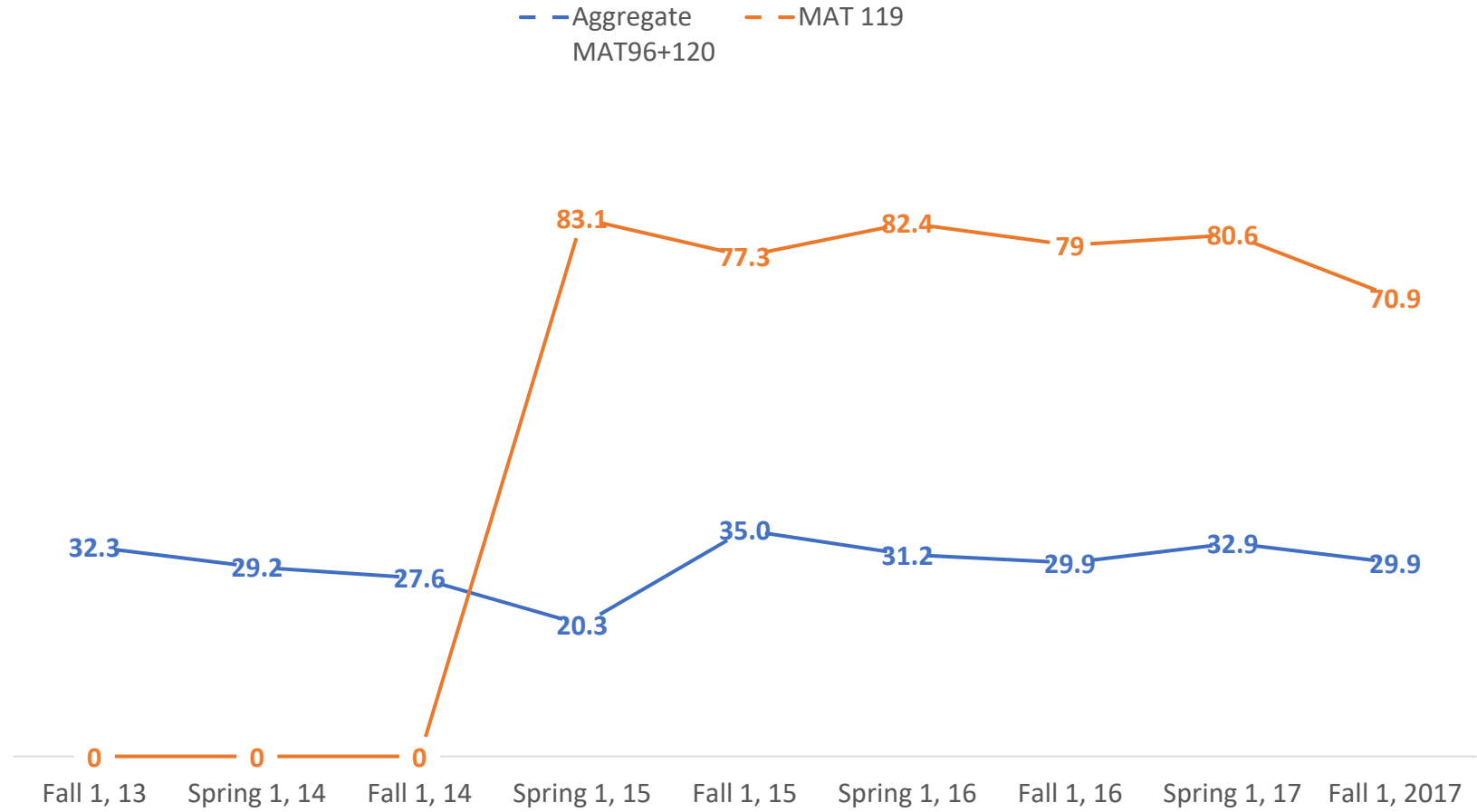
— MAT 095 — MAT 096 — MAT 099



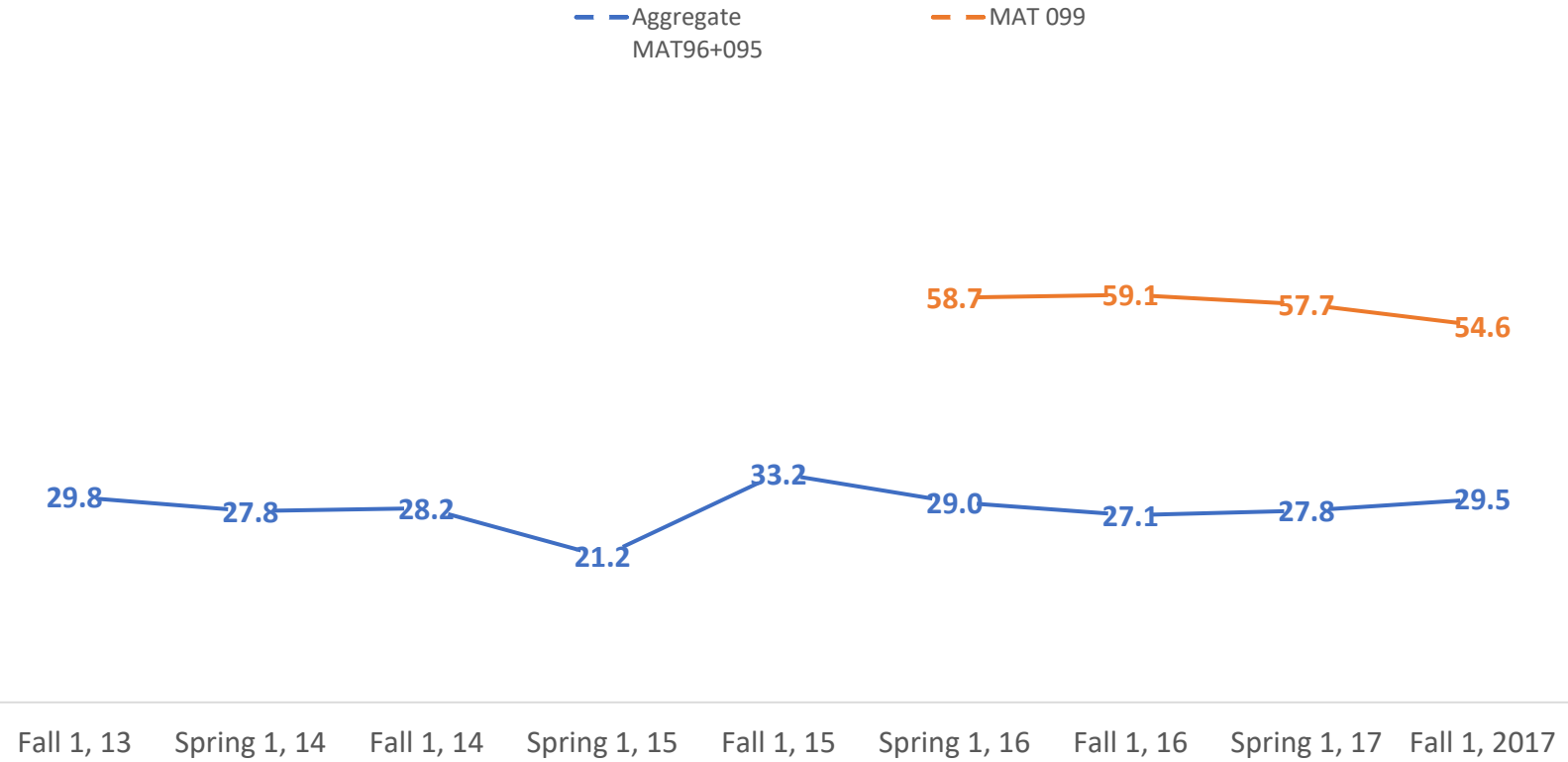
PASS RATE COMPARISON TRADITIONAL VS ACCELERATED - STEM



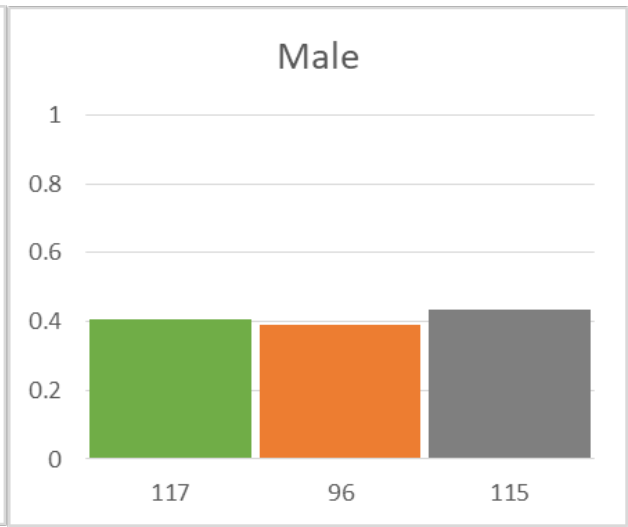
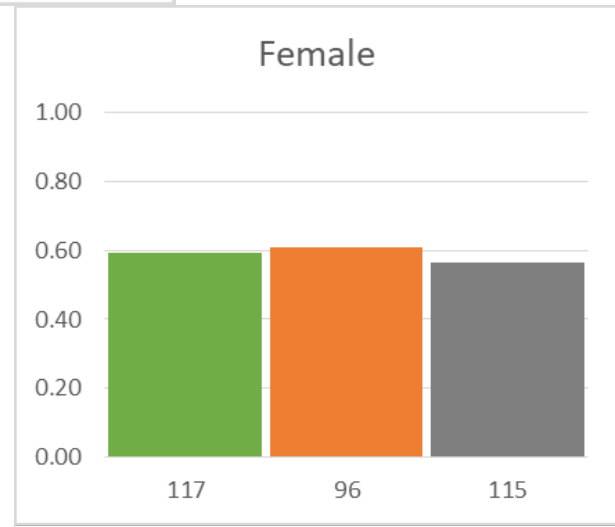
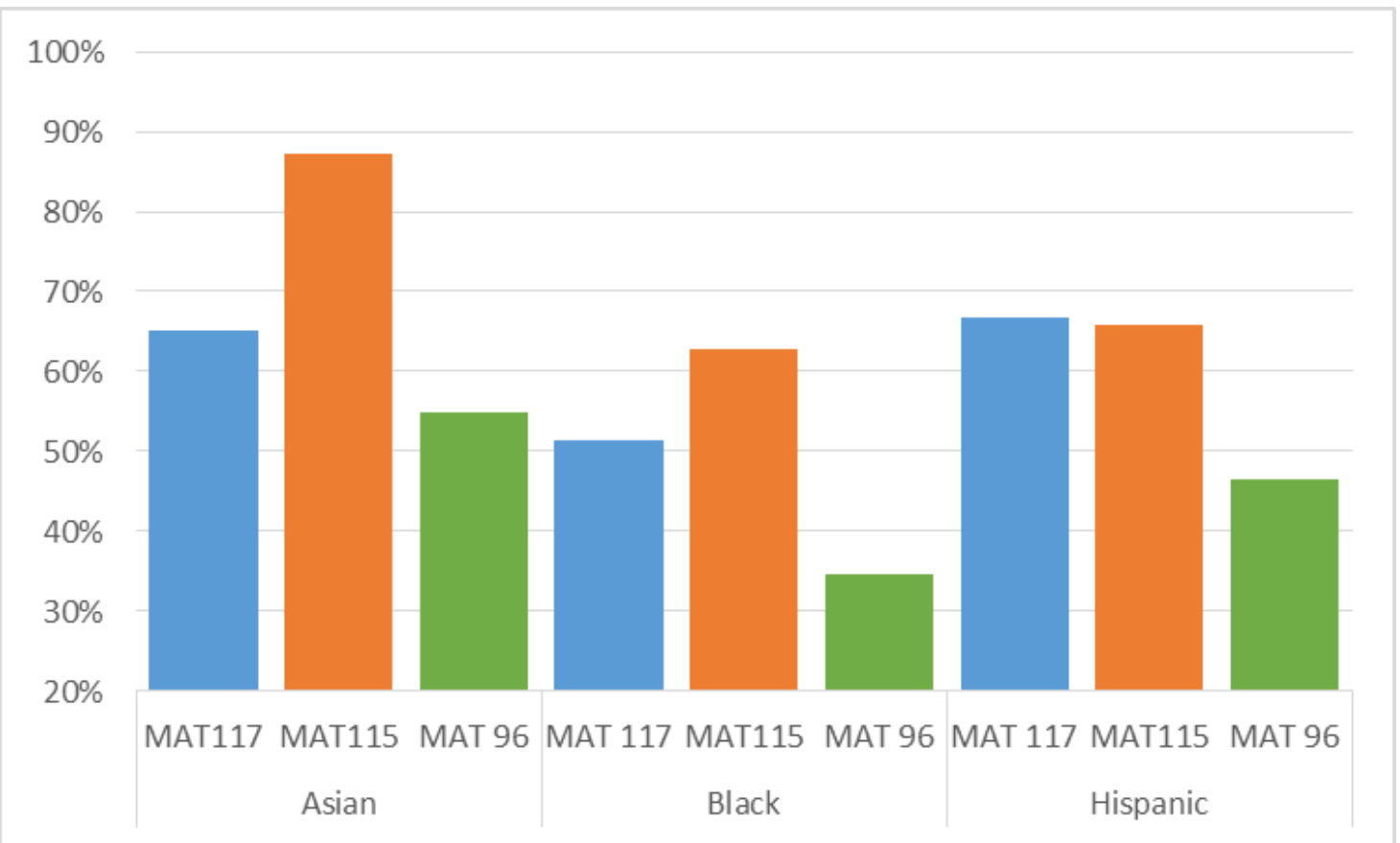
PASS RATE COMPARISON TRADITIONAL VS ACCELERATED - NON STEM



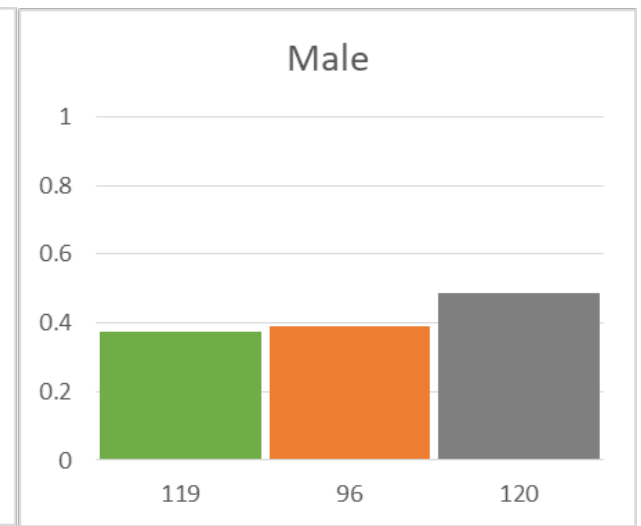
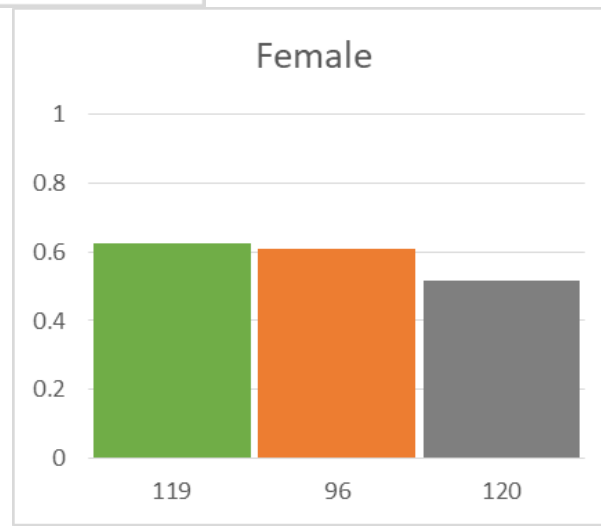
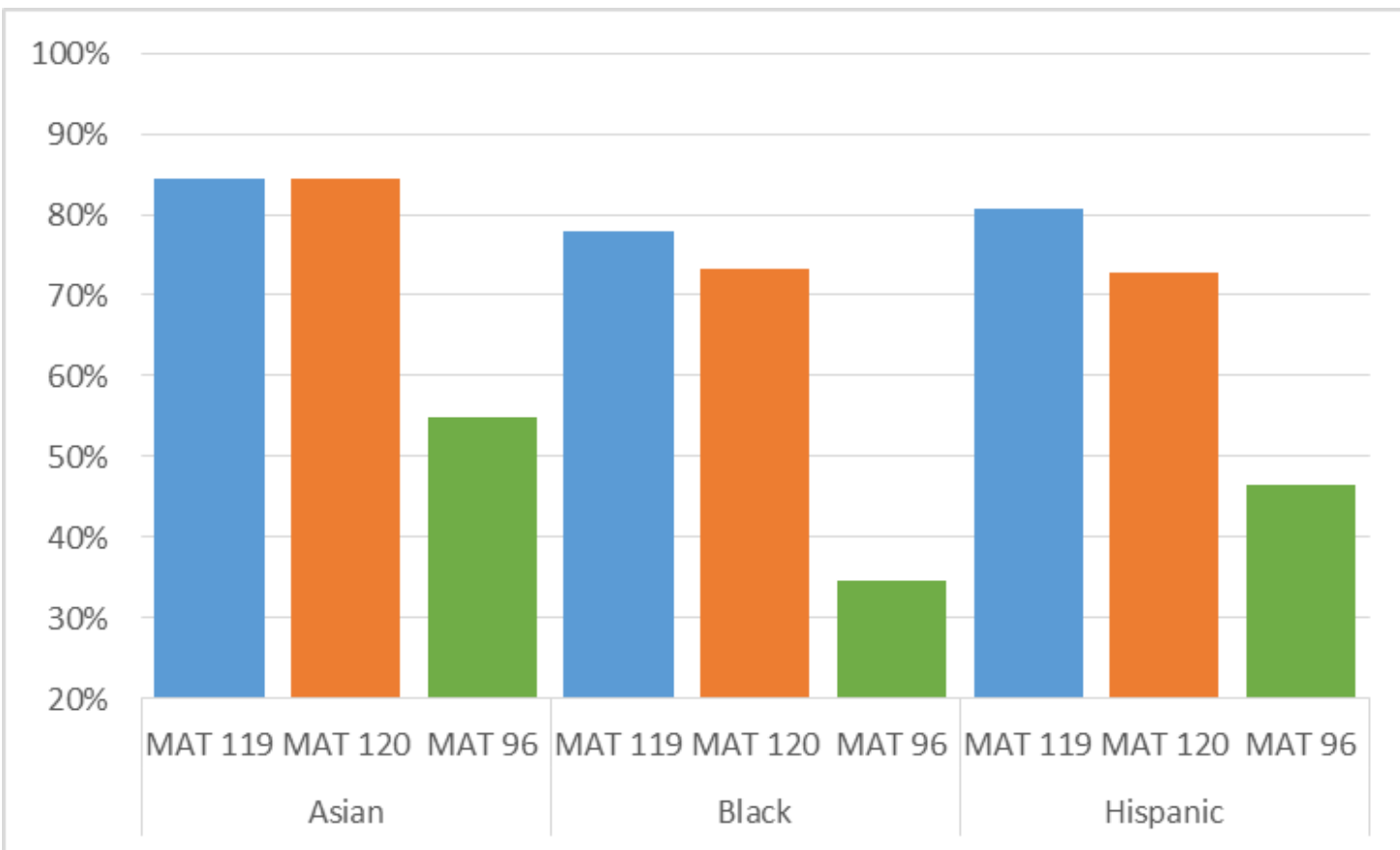
PASS RATE COMPARISON TRADITIONAL VS ACCELERATED BASIC SKILLS



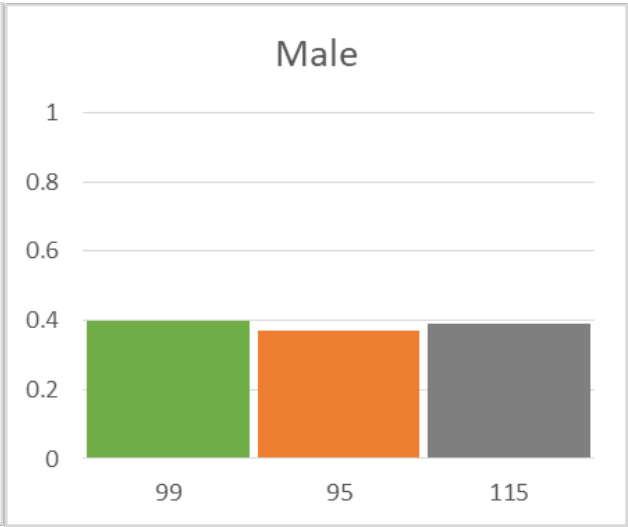
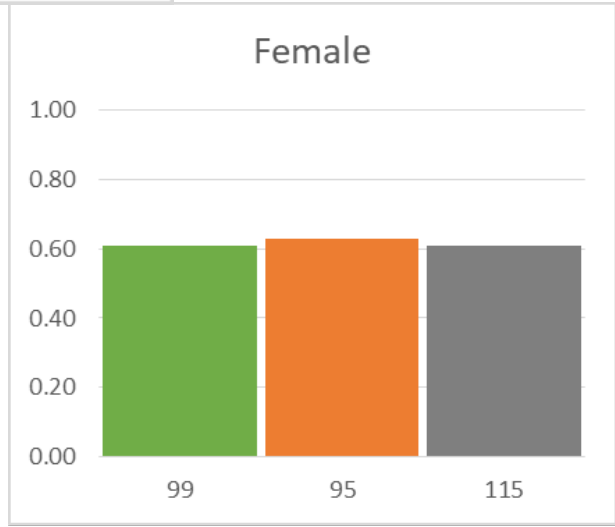
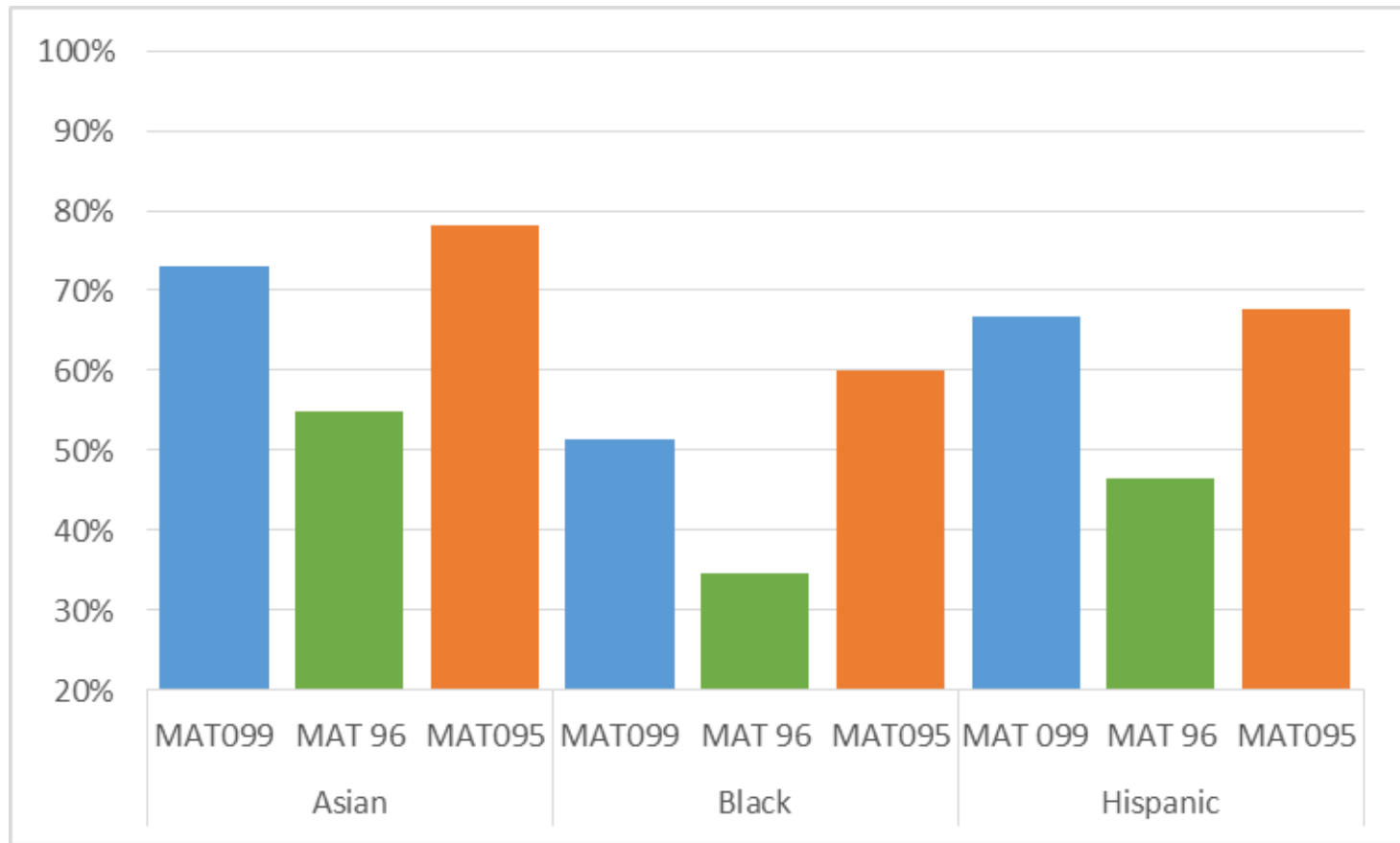
Equity Across Subgroups Co-requisite Algebra + Trig.



Equity Across Subgroups Co-requisite Algebra + Statistics



Equity Across Subgroups Accelerated Fundamentals of Algebra



Future Plans

- Additional Option For Acceleration:
MAT 123
“Quantitative Reasoning for Modern Problem Solving”
- Open Resources Initiative
- Assessment

Questions?

Abdel Belkharraz

abelkharraz@lagcc.cuny.edu

Jeanne Funk

jfunk@lagcc.cuny.edu

Dong Wook Won

dwookwon@lagcc.cuny.edu

Milena Cuellar

mcuellar@lagcc.cuny.edu

1. What are the sequences of mathematics courses in your institution?
2. Identify points where your mathematics sequences could be adapted to include co-requisite model courses.
3. How many sections would you like to offer of the co-requisite courses identified in 2?
4. What challenges do you anticipate in a full-scale implementation of co-requisite courses?