



Launching February 2026

ONCOLOGIC IMAGING

Mini-Course

Offering 6 CME Credits/ 2 SAM Credits

COURSE DESCRIPTION



This comprehensive course provides an integrated, systems-based approach to oncologic imaging across multiple organ systems. Designed for radiology trainees and practicing physicians, the course emphasizes practical imaging strategies, tumor characterization, staging, and multidisciplinary collaboration in cancer care.

Through focused lectures and case-based discussions, participants will review optimal imaging protocols for evaluating malignancies of the skull base, musculoskeletal system, gynecologic organs, breast, and thorax. The course highlights key imaging features that distinguish primary tumors from benign mimics, reinforces the application of established screening and staging guidelines, and explores advanced techniques including diffusion-weighted MRI, dual-energy CT, and molecular imaging with FES PET/CT.

Learners will gain a deeper understanding of how imaging findings influence diagnosis, surgical planning, treatment selection, and longitudinal oncologic management. Emphasis is placed on evidence-based interpretation, recognition of diagnostic pitfalls, and effective communication within multidisciplinary cancer teams.

Overall Course Objectives:

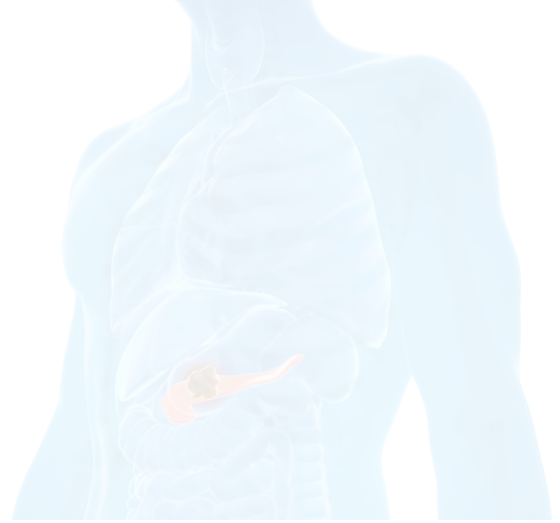
Upon completion of this course, participants will be able to:

- Select appropriate imaging modalities and protocols (CT, MRI, PET/CT) for the evaluation of oncologic disease across different organ systems.
- Accurately characterize malignancies based on imaging features, anatomic location, and clinical context, while recognizing common mimics and pitfalls.
- Apply established screening, diagnostic, and staging frameworks (e.g., TNM staging, lung nodule guidelines, breast imaging algorithms) to guide clinical management.
- Incorporate advanced and molecular imaging techniques, including diffusion-weighted MRI and FES PET/CT, into oncologic evaluation when appropriate.
- Communicate imaging findings effectively to support multidisciplinary cancer care and optimize patient outcomes.





COURSE **INFORMATION**



ACCME & AOA Accreditation

The American Osteopathic College of Radiology (AOCR) is accredited by the American Osteopathic Association (AOA) to provide continuing medical education for physicians. The AOCR has approved this enduring material for a maximum of 6.00 AOA Category 1-A credit(s).

The American Osteopathic College of Radiology (AOCR) is accredited by the Accreditation Council for Continuing Medical Education (ACCME) to provide continuing medical education for physicians. The AOCR designates this enduring material for a maximum of 6.00 AMA PRA Category 1 credit(s).

Physicians should claim only the credit commensurate with the extent of their participation in the activity.

Disclosure

It is the policy of the AOCR to comply with the ACCME Standards for commercial support of CME Activities. All faculty participants in AOCR programs are required to disclose to the program audience any real or apparent conflict(s) of interest related to this course or its content. Faculty disclosure information is included in the course launch page and will be disclosed by faculty as they present.

SAM Designation Statement

The AOCR has received SAM Deemed Status from the American Osteopathic Board of Radiology; therefore, this CME activity is approved for two (2) AOBR SAM credits for the purpose of fulfilling requirements in the AOBR Osteopathic Continuous Certification Program.

Mini-Course Format

This mini-course will be provided in an on-demand format that will launch Saturday, February 28, 2026. After the launch date, learners will be able to access all lecture content and will have 36 months to complete for CME credit. Learners may move through the course at their desired pace. Once all components of the mini-course are completed, a CME certificate will be automatically generated and appear in the learner's 'completed' activities tab and will be emailed to the learners inbox.

LECTURE & FACUTLY LISTING



Amy Kerger, DO, FAOCR **Program Chair**

Associate Professor Department of Radiology
The Ohio State University
Columbus, OH



Skull Base Diseases

Luciano Prevedello, MD

Associate Chief Clinical Information Officer
Vice Chair, Department of Radiology
Professor, Division of Neuroradiology
The Ohio State Wexner Medical Center
Columbus, OH



Fundamentals of Fluoroestradiol (FES) PET Imaging

Molly Roseland, MD

Clinical Assistant Professor of
Radiology Michigan Medicine
Ann Arbor, MI



Musculoskeletal Oncology: From Imaging Acquisition to Diagnosis

Anthony Salvador, DO

Clinical Assistant Professor, Musculoskeletal Imaging
The Ohio State University Wexner Medical Center
Columbus, OH

LECTURE & FACUTLY LISTING



Breast Cancer Workup

Alisa Sumkin, DO

Radiology, Breast Imaging
University of Pittsburgh Medical Center
Pittsburgh, PA



Challenging Gyn Onc Cases

Shaun Wahab, MD, FSAR

Associate Professor, Abdominal Imaging
Department of Radiology
Vanderbilt University Medical Center
Nashville, TN

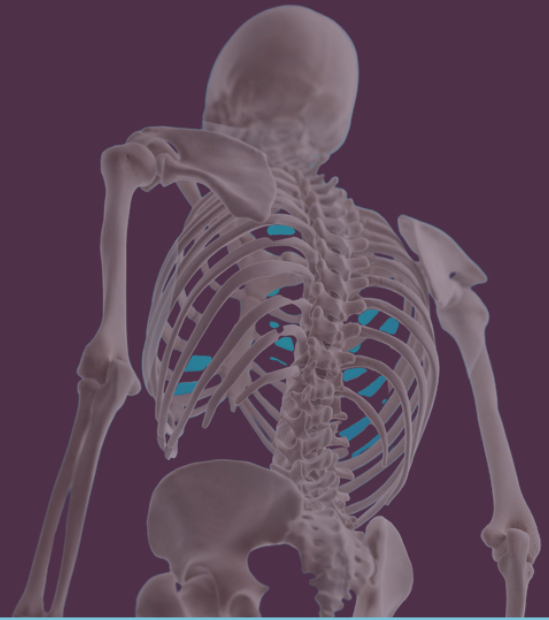
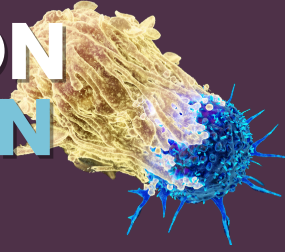


Thoracic Oncology Imaging

Benjamin Wardrop, DO

Cardiothoracic Radiologist
Allegheny Health Network
Pittsburgh, PA

REGISTRATION INFORMATION



Plus Member	\$0
Active Member	\$200
In-Training Member	Complimentary
Non-Member Rate	\$300

Registration will open Saturday, February 28, 2026. This mini-course will be in an on-demand format, available for purchase at any time in the online CME Library. Registrants will have 36 months from the launch date to complete this course.

119 East Second Street | Milan, MO 63556 | 660-445-6090

www.aocr.org | info@aocr.org