

MODULE 8: ACCESS TO HEALTH SERVICES: MULTIPLE PERSPECTIVES

8

Access to Health Services: Multiple Perspectives

Walter Tsou, MD, MPH
Adjunct Professor, University of Pennsylvania



Public Health
Learning Modules

Using **Healthy People 2020**
to Improve Population Health



ASSOCIATION FOR PREVENTION TEACHING AND RESEARCH



College of Health Professions
and Social Work
TEMPLE UNIVERSITY*

Module 8: Access to Health Services

8

Part 5: Workforce



Public Health
Learning Modules

Using **Healthy People 2020**
to Improve Population Health

Workforce

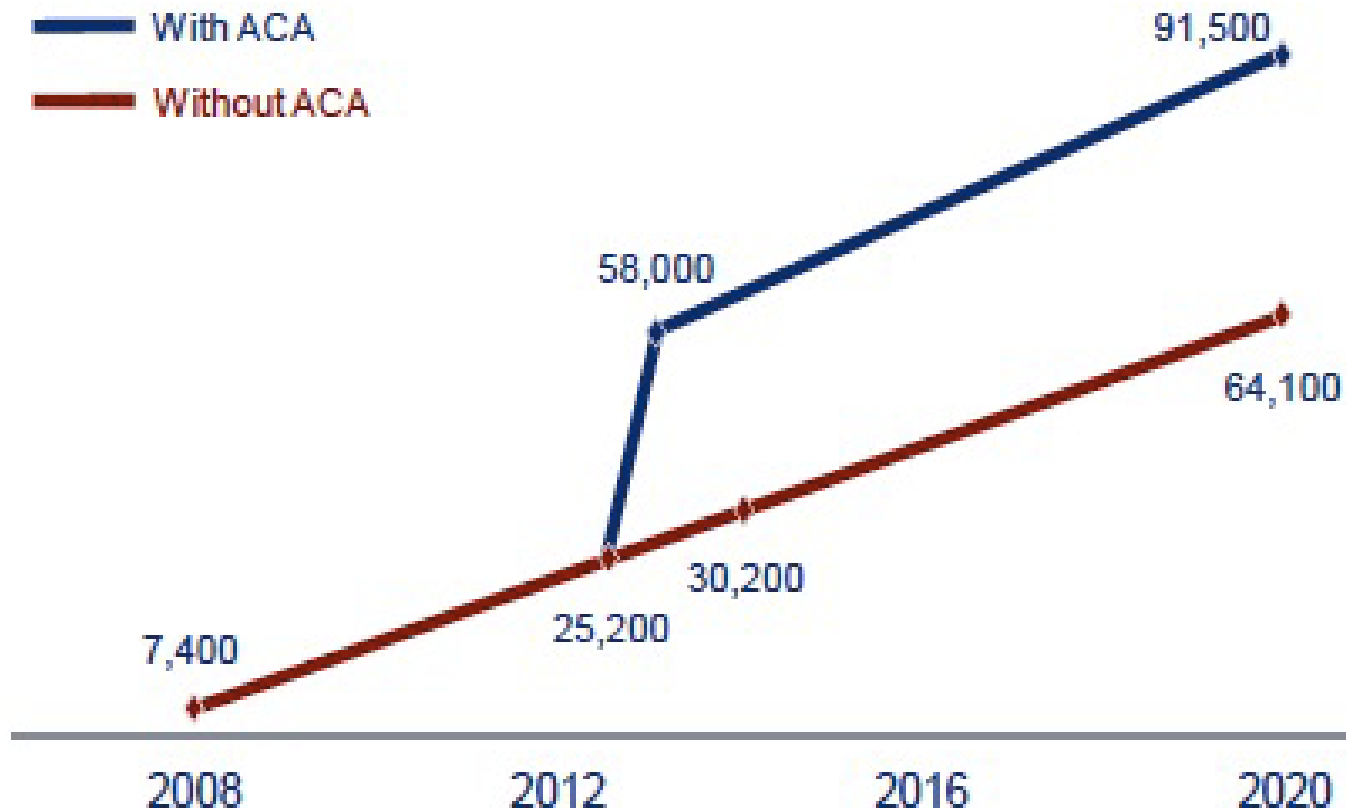
- Who will provide medical care?
 - Provider supply shortage
 - % who choose primary care
 - Advanced practice nurse practitioners, physician assistant
- Growing doctor shortage
- Consumer driven health care

Med Students choosing Primary Care, but still 46,000 short by 2020

Specialty	2009	2010	2011	2012	2013
Family medicine	1,071	1,169	1,301	1,322	1,355
Internal medicine	2,632	2,722	2,940	2,941	3,135
Pediatrics	1,682	1,711	1,768	1,732	1,837
Primary care total	5,385	5,602	6,009	5,995	6,327

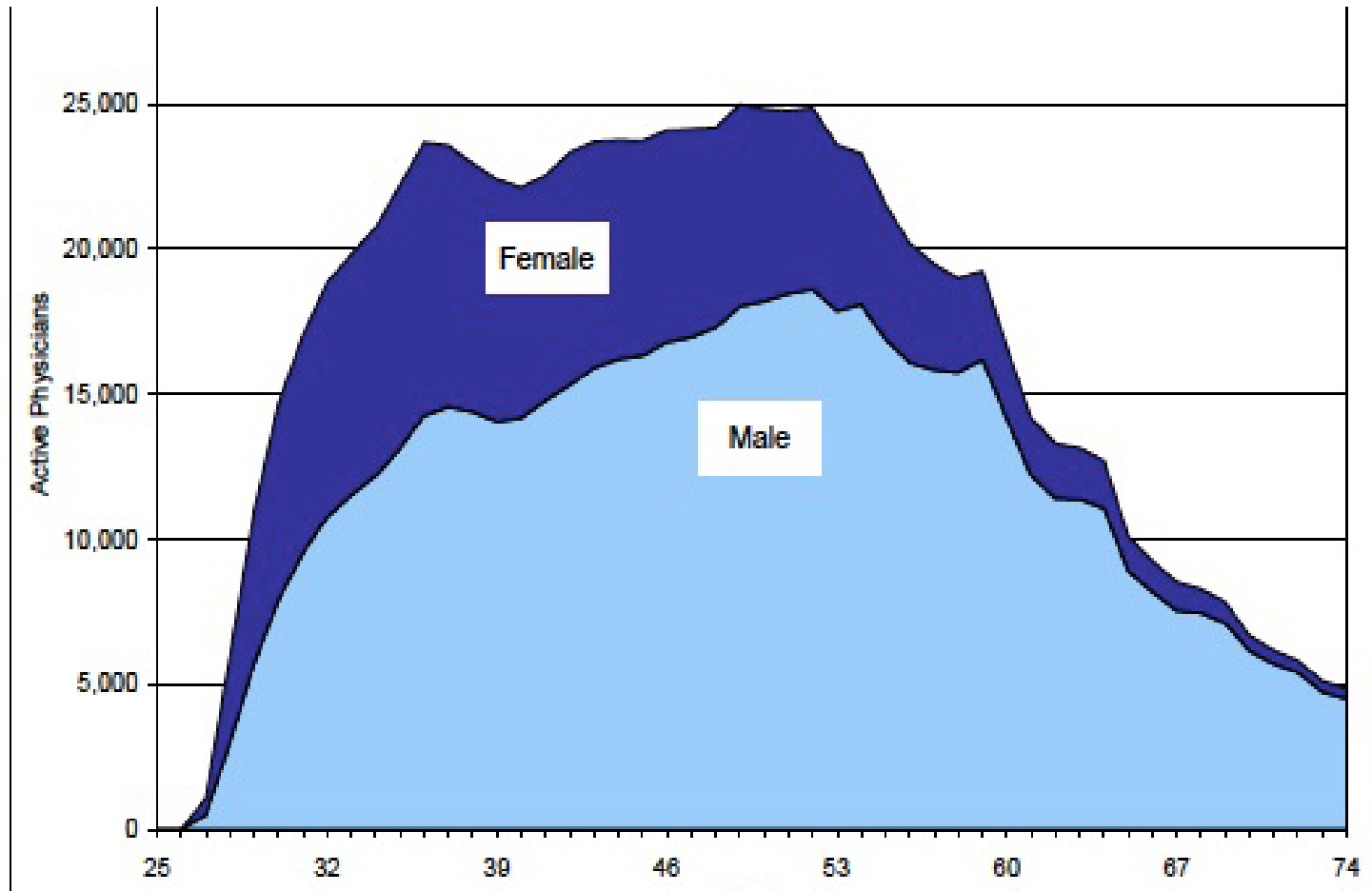
AMA News, March 25, 2013 from National Resident Matching Program

US Physician Shortage with expanded coverage from the ACA



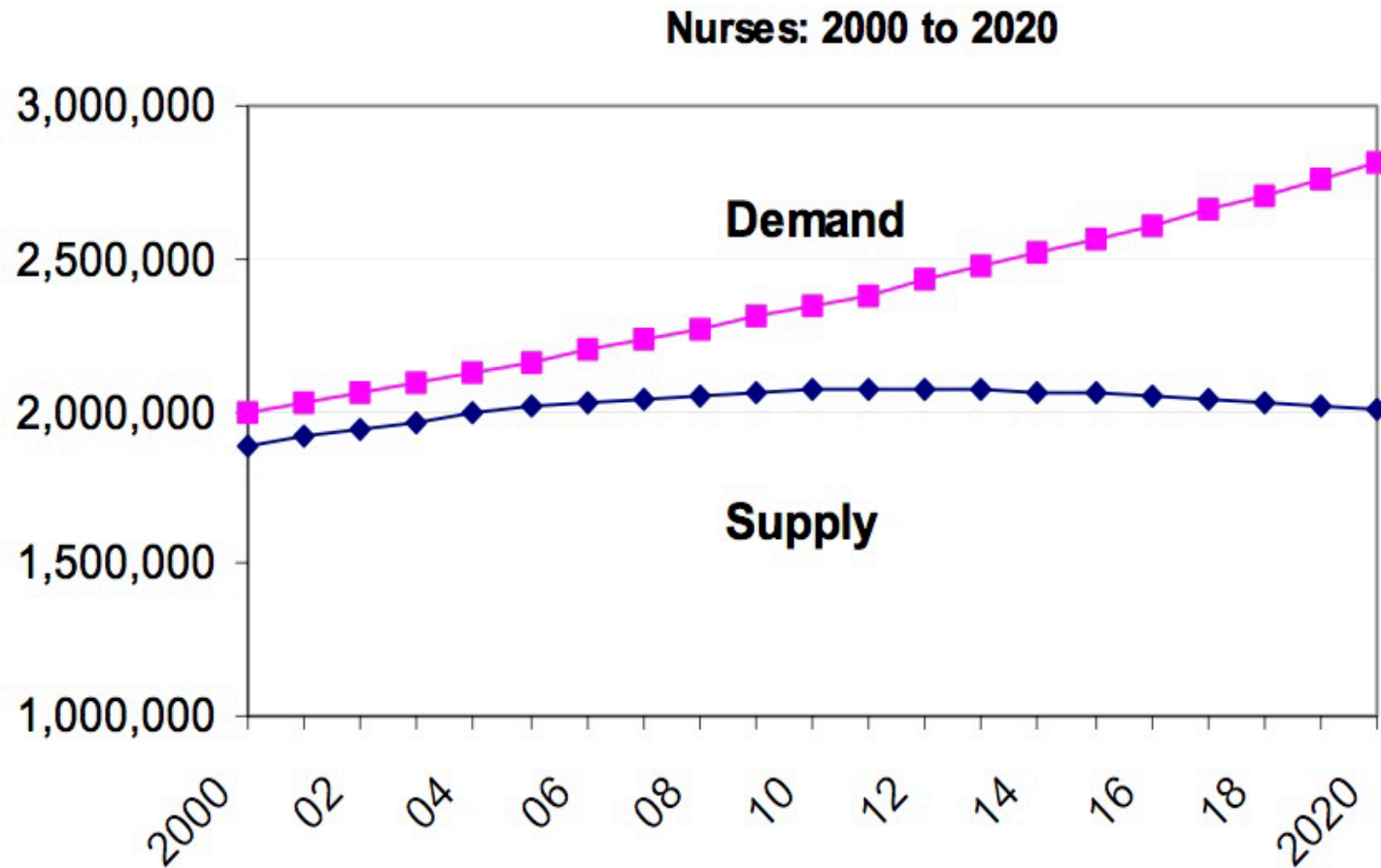
Source: Kirsh DG, Henderson MK, Hill ML (2011). "Physician Workforce Projections In an Era of Health Care

Age Distribution of Current Physician Workforce



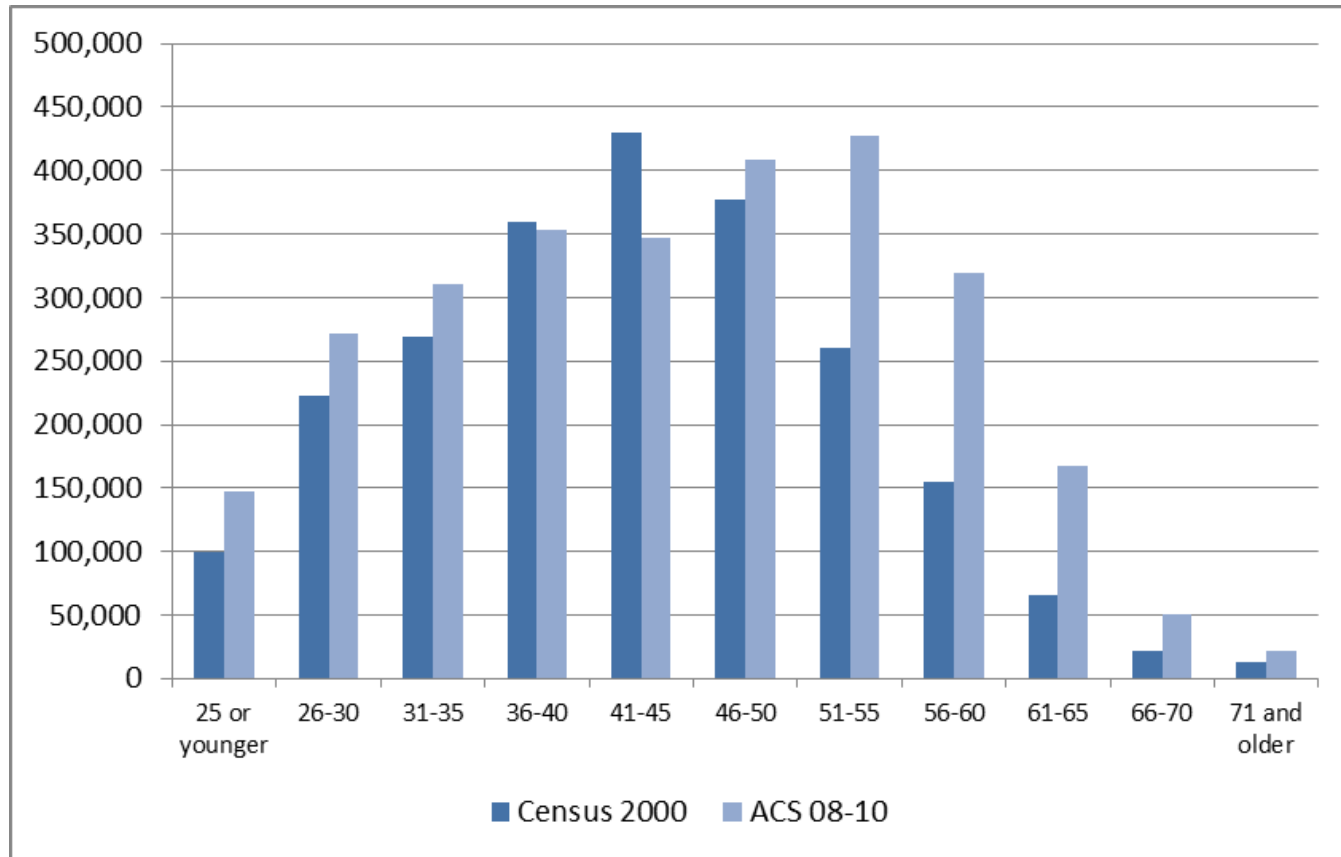
AAMC, AMA Physician Master file

Projected Shortage of Nurses to 2020



Source: Bureau of Health Professions. RN Supply and Demand

Figure 10. Counts of RNs in the Workforce, by Age, in Five-Year Increments



In summary

- Access to care is crucial for health care
- There are several barriers to care
- Finding a provider, usually in primary care is the key to accessing the health system
- Timeliness is a key element to care
- Once you have a health provider, getting appropriate care is essential
- A projected shortage of health professionals will affect access to care