

MODULE 2: THE LEGAL INFRASTRUCTURE OF PUBLIC HEALTH

# 2

# The Legal Infrastructure of Public Health

Scott Burris, JD  
Professor of Law  
Beasley School of Law, Temple University



**Public Health**  
Learning Modules

Using Healthy People 2020  
to Improve Population Health



ASSOCIATION FOR PREVENTION TEACHING AND RESEARCH



College of Health Professions  
and Social Work  
TEMPLE UNIVERSITY\*

Module 2: The Legal Infrastructure of Public Health



2

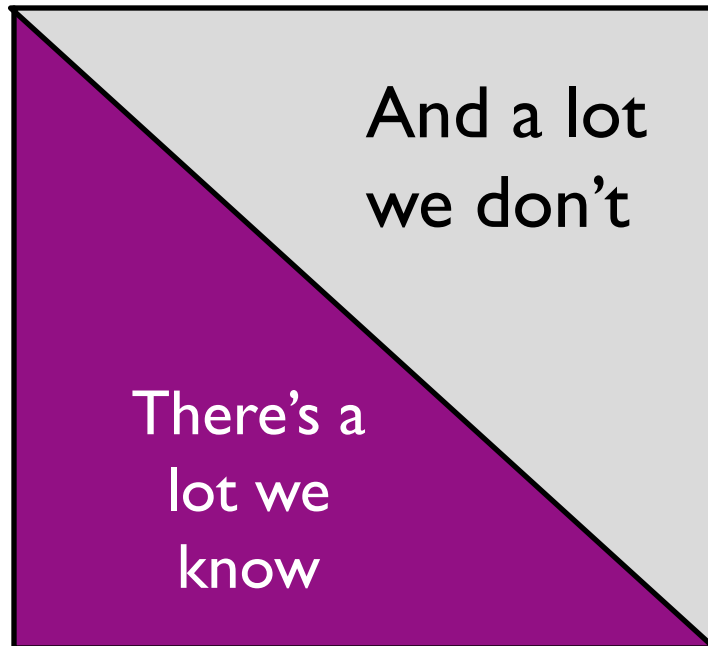
# Part 3: Legal Infrastructure at Work - Insights from Current Evidence



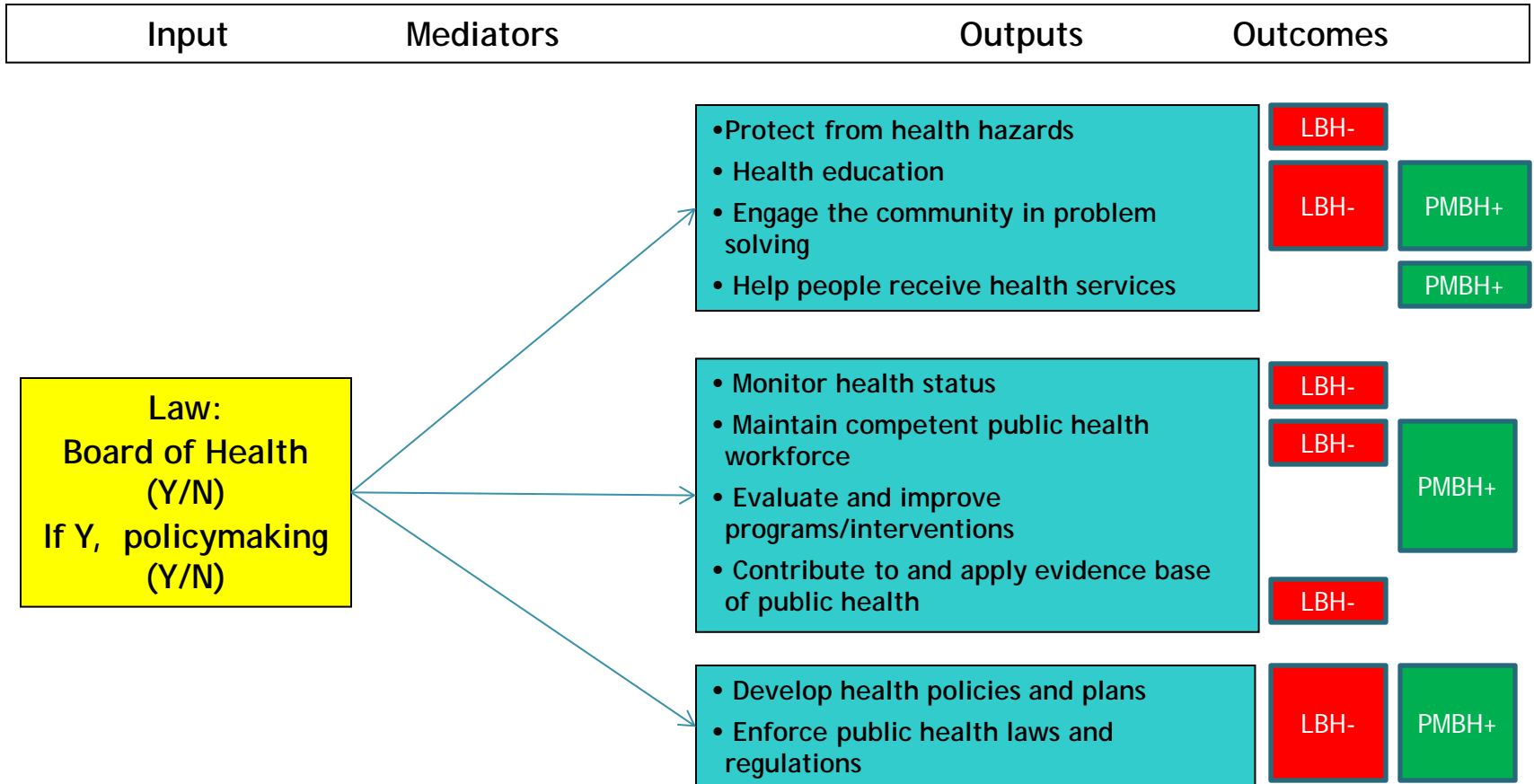
**Public Health**  
Learning Modules

Using **Healthy People 2020**  
to Improve Population Health

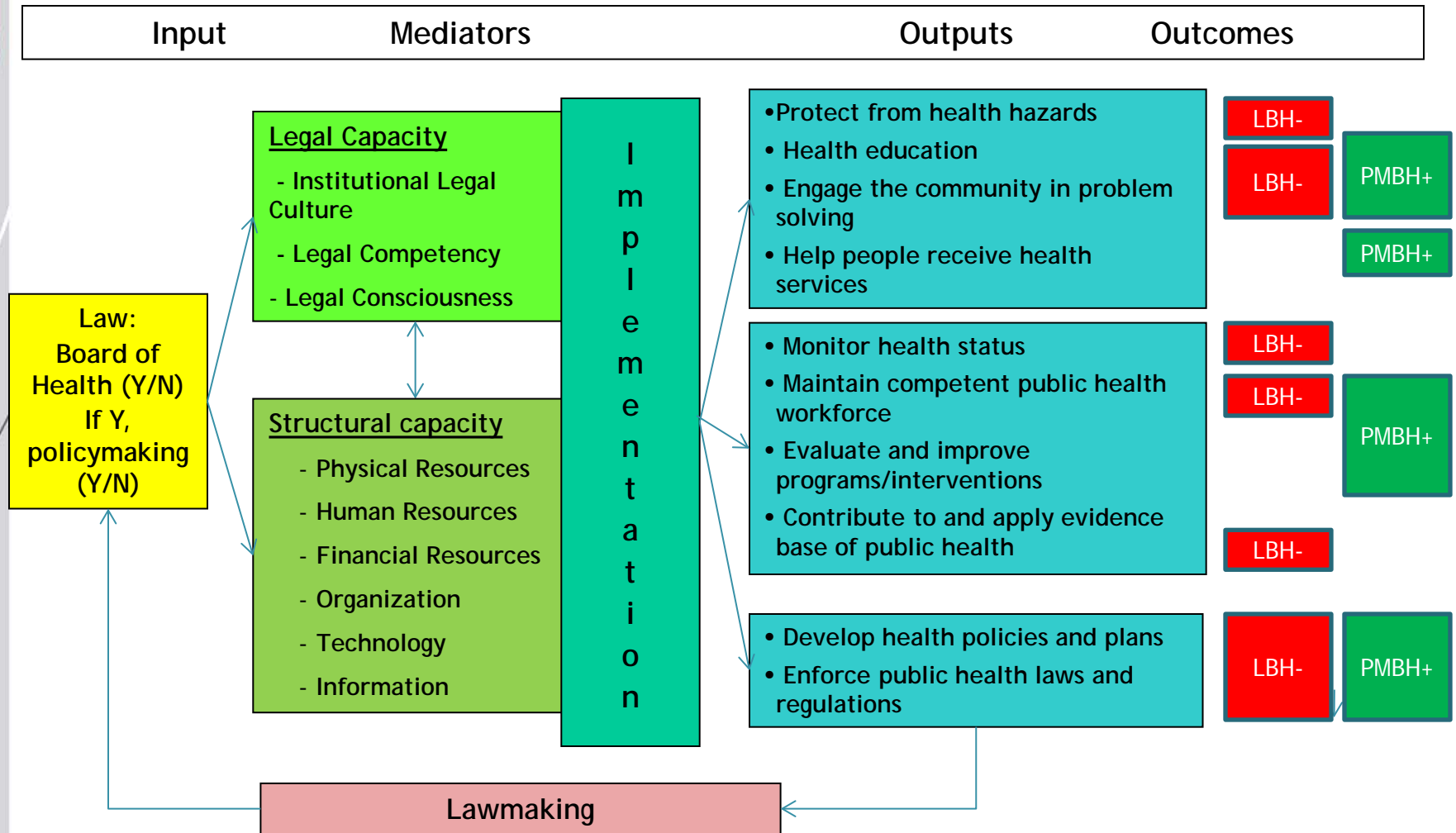
# Law in Public Health Practice



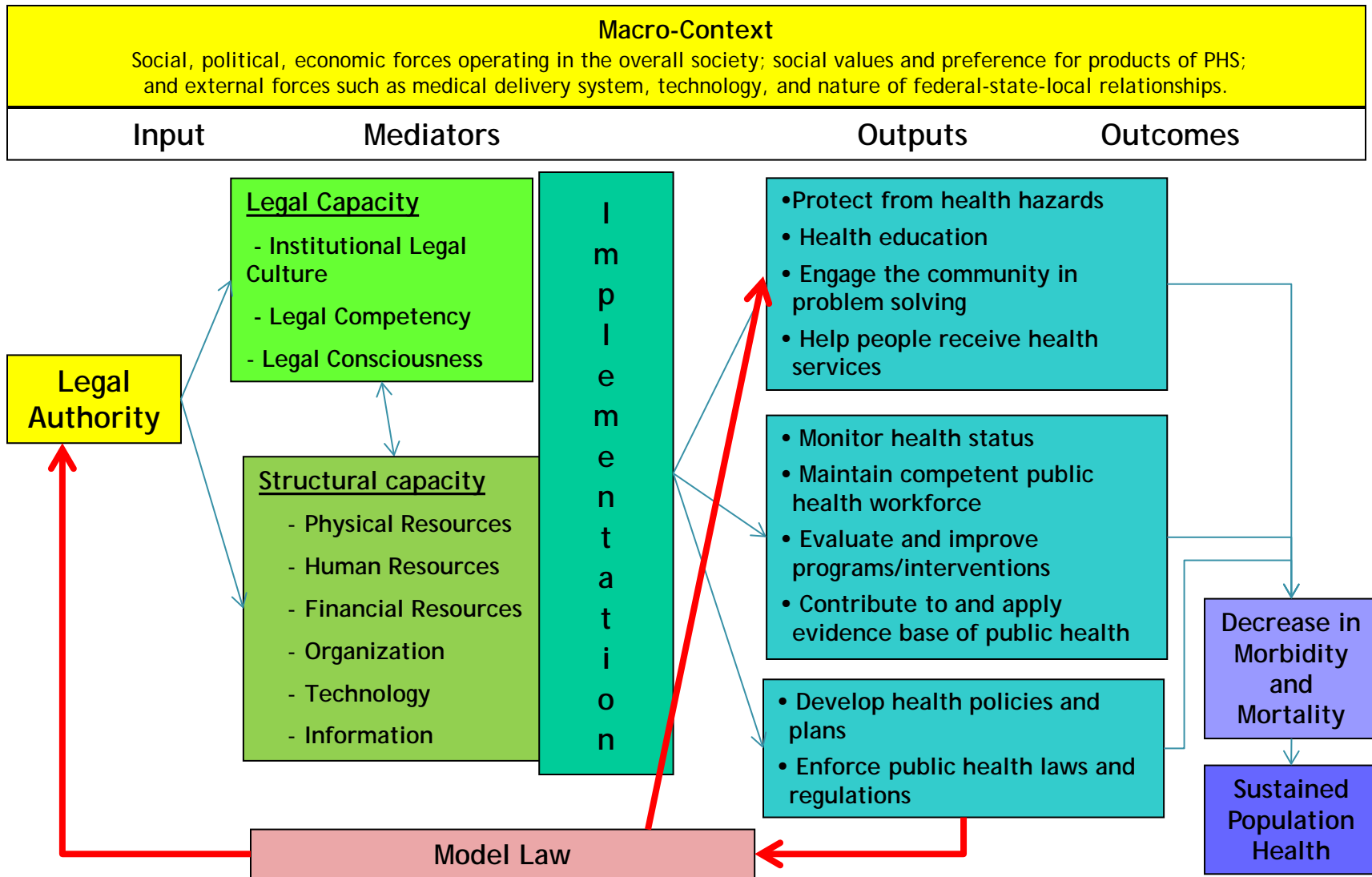
# Example: Board of Health Structure and Authority



# Example: Board of Health Structure and Authority



# Example: Model Lawmaking



# Example: Preparedness Law

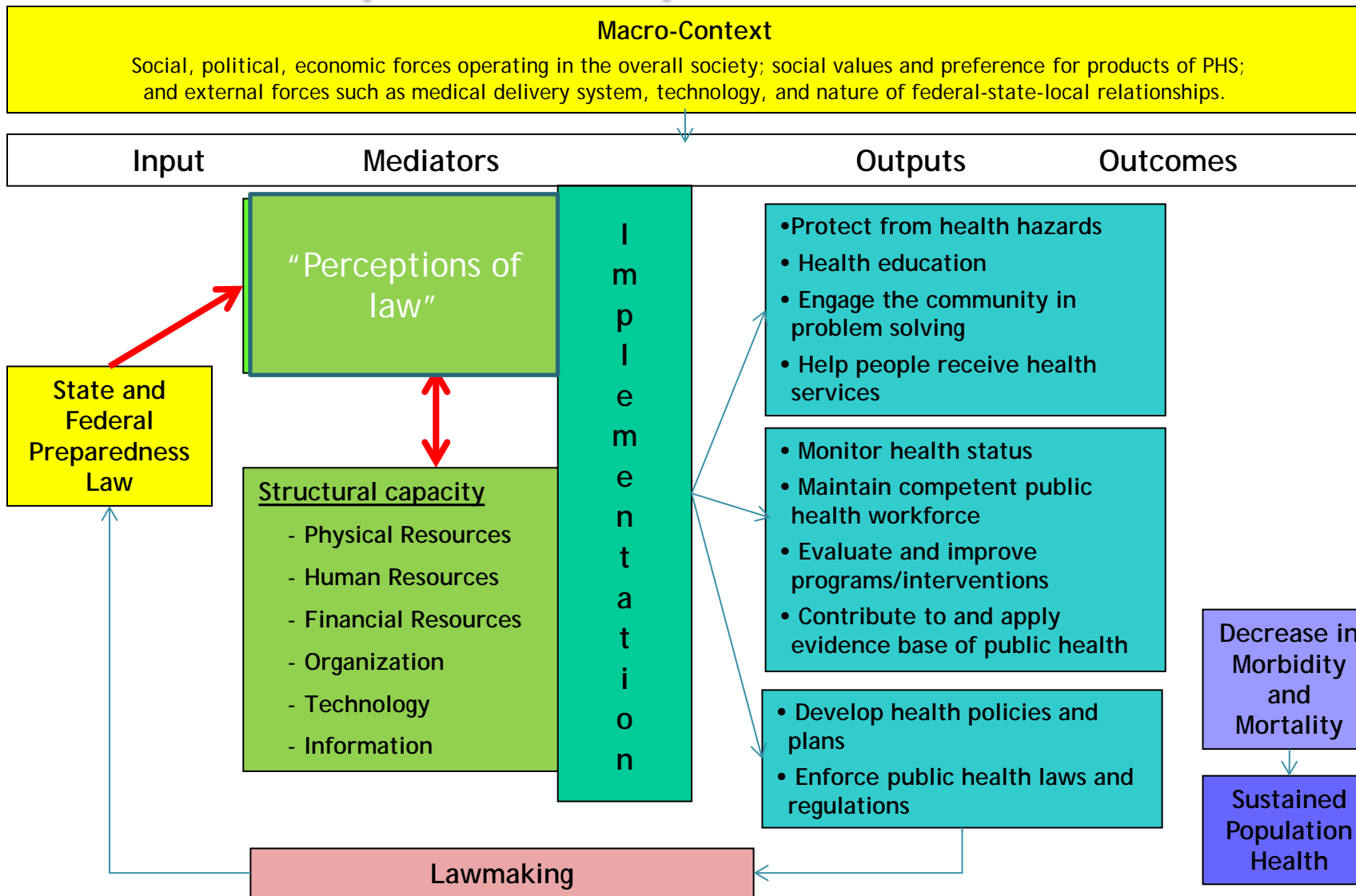
**Table 1** Core Elements of Legal Preparedness

Element	Description
Laws and legal authority	Statutes, regulations, and ordinances are foundational to public health legal preparedness
Effective use of laws	Public health officials must know the legal powers they have and how best to apply them
Coordination of legal interventions across jurisdictions	Public health agencies must respond to public health emergencies, often across multiple jurisdictions or sectors
Information resources and dissemination	Guidelines are needed to establish public health laws in jurisdictions, update new laws, and provide best practices to support action

*Source:* Benjamin and Moulton 2008

Jacobson PD, Wasserman J, Botosaneanu A, Silverstein A, Wu HW. 2012. The Role of Law in Public Health Preparedness: Opportunities and Challenges. *Journal of Health Politics, Policy and Law* 37: 297-328

# Example: Preparedness Law

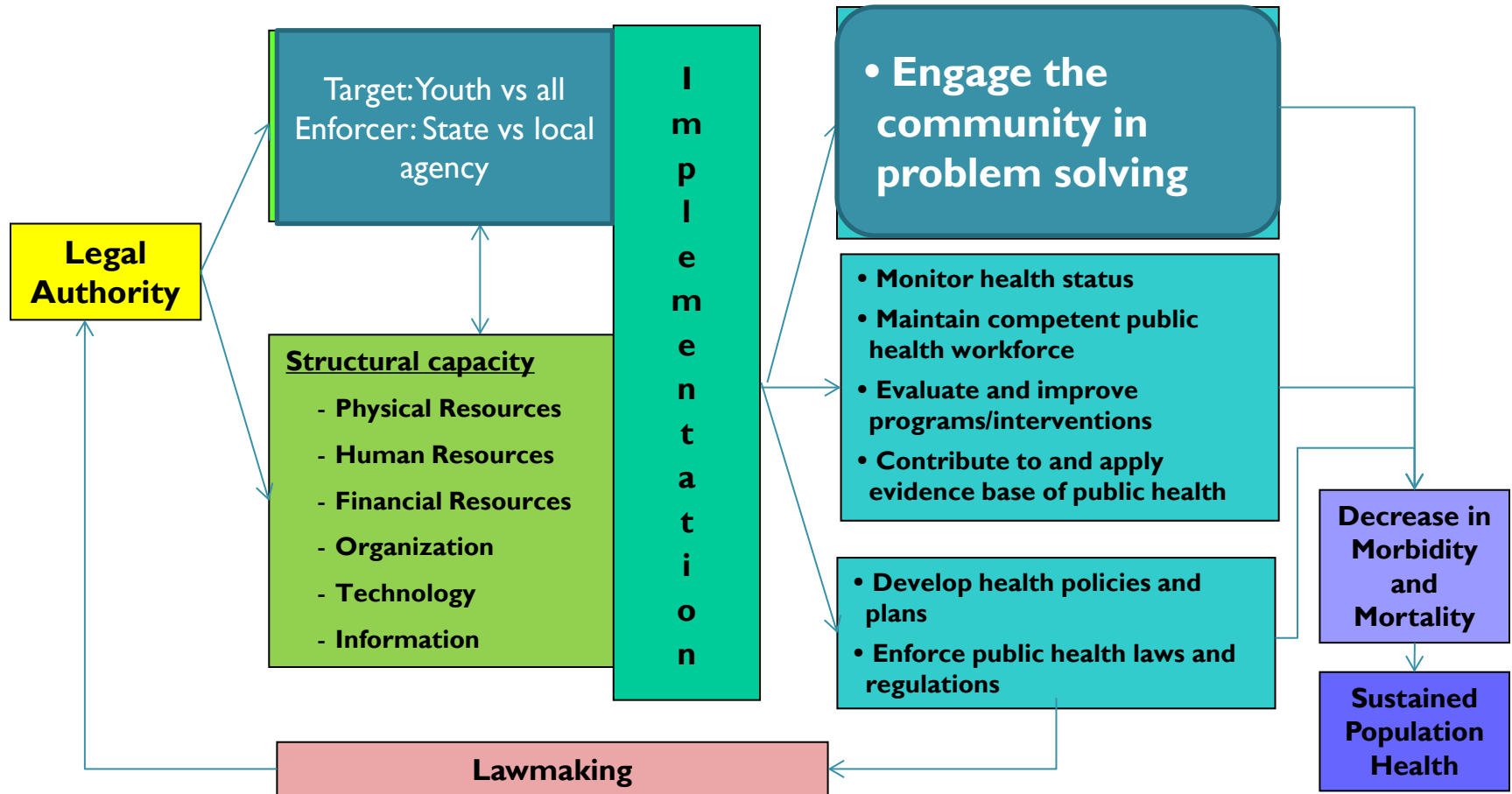




# Tobacco Control Enforcement

**Macro-Context**  
 Social, political, economic forces operating in the overall society; social values and preference for products of PHS; and external forces such as medical delivery system, technology, and nature of federal-state-local relationships.

**Input                      Mediators                      Outputs                      Outcomes**



# Summary

- A small but evolving body of scientific evidence supports the importance in public health of:
  - Laws on the books
  - Agency legal capacity
  - Effective implementation of law