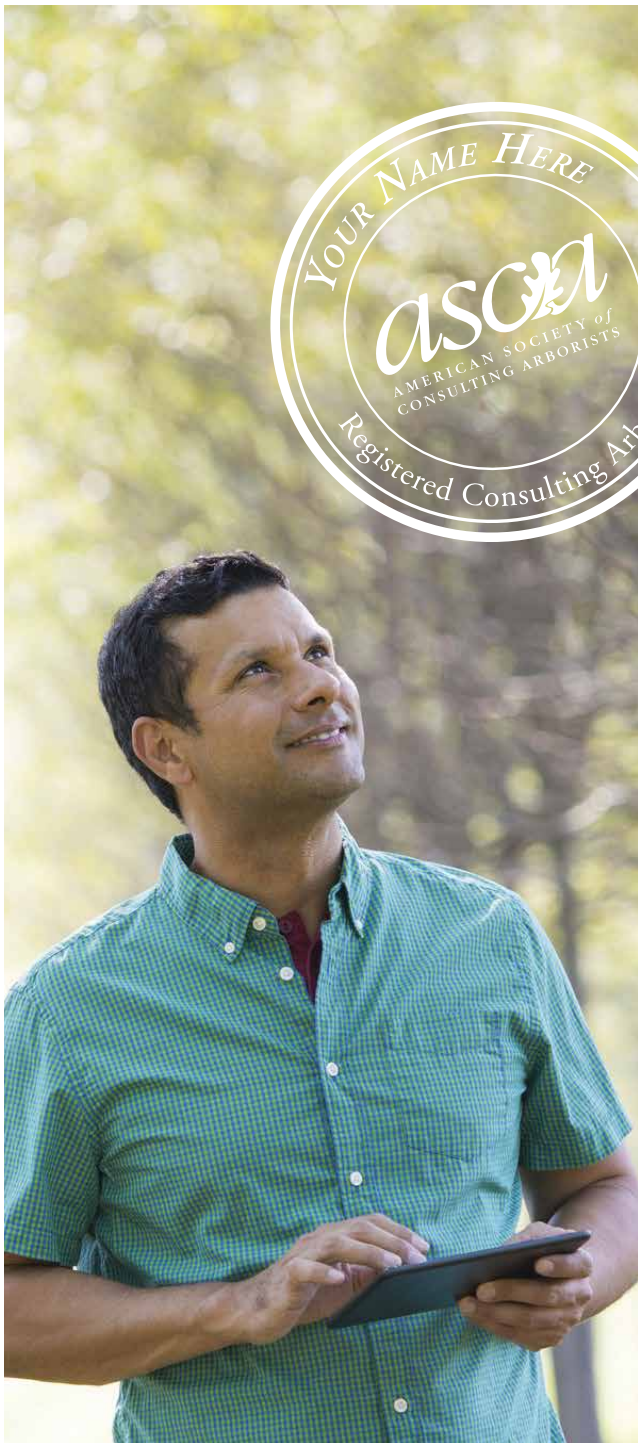


asca | RCA

Registered Consulting Arborist®



www.asca-consultants.org



The RCA—It Makes the Difference

To be truly successful in this competitive environment, you need to stand out from the masses. In the arboricultural industry, you can differentiate yourself by achieving Registered Consulting Arborist® (RCA) status. As ASCA's premier level of membership, RCAs demonstrate their commitment to providing clients with the highest quality consulting services.

While becoming an RCA requires an investment of your time, the good news is you can move through the process at your own pace. And, the benefits to your consulting practice can be substantial.



“The RCA enhances my credibility. I graduated from ASCA’s Consulting Academy and completed the RCA report requirements—demonstrating my understanding of the skills necessary to be a successful Consulting Arborist.”

“The RCA better positions me within the marketplace—differentiating me from my competition.”

Qualifying

- Current ASCA Member
- Graduate of ASCA’s Consulting Academy

Graduates of ASCA’s Consulting Academy are able to deliver stronger work products after participating in sessions on technical writing and report preparation; duties to customers, clients, and employers; roles of a consultant; ethical principles; oral communications; dispute resolution; and forensics.

- Continuing Education Requirements

You must have earned 420 CEUs to meet the continuing education requirement. (See the back cover for a list of CEUs.)



Applying

- Application Process

In addition to completing the application and submitting the \$100 application fee, you must also provide the following items:

- Original transcript from the last educational institution attended.
- Curriculum Vitae.
- Itemized list of CEUs.

- Submitting Reports*

Each report must receive a minimum score of 75% to meet the requirement.

- Report #1: Scenario Report—Once the ASCA office has received your completed application, materials, and fee, you will receive a consulting scenario.
- Report #2: Original Report—Upon successful review of your Scenario Report, you will be required to submit one of your own original reports.

**A report review fee of \$100 must accompany each report.*

Approved CEUs

NOTE: 1 ISA CEU = 1 ASCA CEU. You can also use the following ASCA approved CEUs:

Formal Education

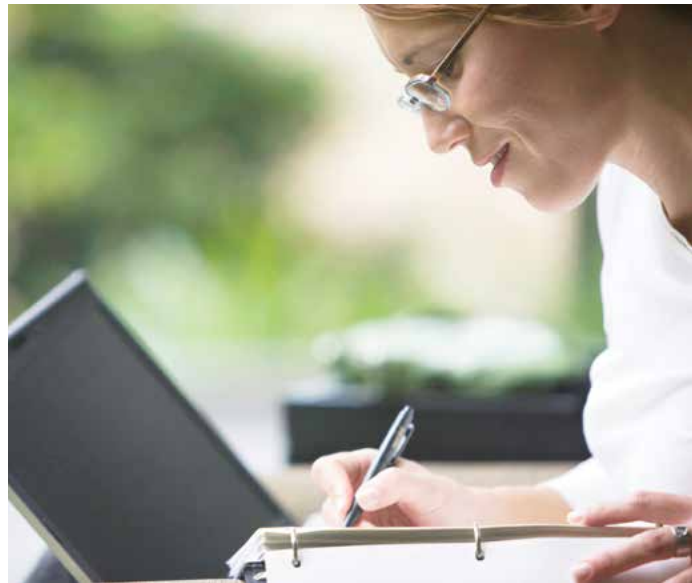
Closely related four-year degree	300 CEUs
Unrelated four-year degree	180 CEUs
Closely related two-year degree	120 CEUs
Unrelated two-year degree	60 CEUs

ISA Certification

Board Certified Master Arborist (BCMA)	300 CEUs
ISA Certified Arborist	60 CEUs

Continuing Education

ASCA Consulting Academy	30 CEUs
ASCA Annual Meeting	~20 CEUs
ASCA Pre-Conference Workshop	8 CEUs
Completion of a formal continuing adult education course in arboriculture (approved by ASCA)	15 CEUs
ISA Annual Meeting	12 CEUs
TCIA Annual Meeting	12 CEUs
ASCA workshop or sponsored meeting	10 CEUs
Other national arboricultural meeting	10 CEUs
ISA or TCIA function on a chapter or regional basis	7 CEUs
Related subject matter conference (e.g., Expert Witness Conference, American Society of Appraisers)	7 CEUs
Authoring an arboricultural-related article in a refereed professional journal	7 CEUs
Completing a home-study course related to arboriculture (approved by ASCA)	7 CEUs
Other regional or state arboricultural meeting (e.g., state urban forestry council)	5 CEUs
Speaking at a bona fide arboricultural meeting (NOTE: May be added to an authorized credit for attendance)	5 CEUs Max of 30
Authoring an arboricultural-related article in a non-refereed publication	5 CEUs Max of 30
Local arboricultural meeting sponsored by cooperative extension or local government	3 CEUs Max of 30
Authoring regular news column or hosting a radio or TV program (arboriculture only)	3 CEUs
ASCA online seminar (per seminar)	1 CEU



“Just going through the process to become an RCA improved my work product.”

RCA Application

Contact Information

Name

Address

City

State

Zip

Phone

Fax

Email

RCA Application Requirements

- Documentation of 420 CEUs
- Original Transcript (most recent)
- Curriculum Vitae
- RCA Application Fee

Payment Information

Application Fee: \$100

Amount Enclosed _____ \$ _____

- Check (*made payable to ASCA—U.S. funds only*)
- MasterCard VISA

Card Number

/

Exp. Date

Security Code

Signature

Name on Card

Send this completed application with your documentation and application fee to:

ASCA

**9707 Key West Avenue, Suite 100
Rockville, Maryland 20850**