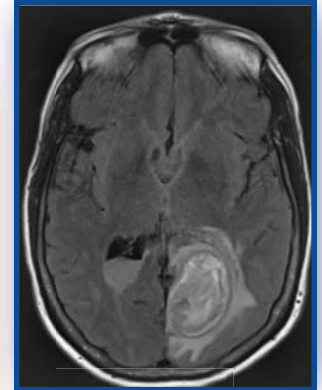
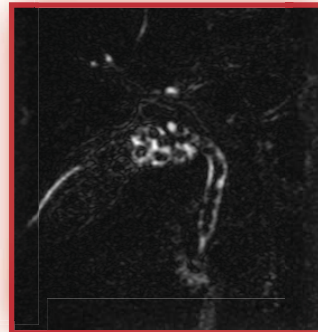
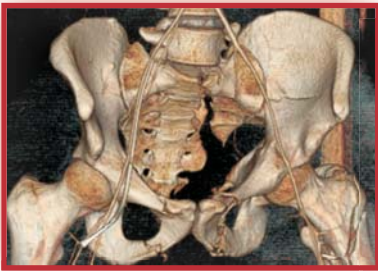




Essentials of Emergency Radiology 2017: Pearls & Pitfalls

June 3-4, 2017

Boston, Massachusetts



Course Description:

The educational objective of this intensive, two-day course is to provide a comprehensive, focused review of the major basic & advanced principles of diagnostic emergency radiology in the evaluation of acutely ill and injured patients.

Specifically, we will emphasize the management, acquisition, and interpretation of structural and advanced imaging studies of the brain, spine, extremities, heart, lungs, abdomen, pelvis, and vascular system, with the goal of:

- (1) Appropriate application of clinical imaging algorithms.
- (2) Implementation of relevant recent technical advances.
- (3) Formulation of a systematic approach to interpreting traumatic and non traumatic conditions from head to toe.

Special emphasis will be placed on the recognition of common imaging mimics, pitfalls, and artifacts, as well as highlighting "what the referring clinician needs to know", up-to-date emergency department workflow and clinical decision support tools, and relevant current healthcare policy issues.

For more information and to register please go to:

<https://cmeregistration.hms.harvard.edu/emergencyradiology2017>

Course Directors: **Bharti Khurana, MD** • **Michael H. Lev, MD, FAHA, FACR**

Learning Objectives:

Upon completion of this activity, participants will be able to:

- Select the most *appropriate* and *cost-effective* imaging studies for specific clinical presentations of acute traumatic and non-traumatic conditions
- Integrate the most current pathophysiological & pathological concepts into the interpretation of these imaging studies, emphasizing a patterned, *checklist approach*
- Provide focused differential diagnoses for simple & complex imaging problems, using up-to-date structured reporting & decision support tools for communication of both urgent & incidental findings
- Apply emerging technologies, such as dual energy CT and radiation dose reduction techniques, in emergency imaging to the care of their patients

Target Audience:

This course would benefit any general radiologist, emergency radiologist, trauma surgeon, ED or critical care physician or physician assistant – at any level of training – who requires a brief but thorough advanced clinical update in state-of-the-art emergency imaging by leaders in the field.

Accreditation:

The Harvard Medical School is accredited by the Accreditation Council for Continuing Medical Education to provide continuing medical education for physicians.

The Harvard Medical School designates this live activity for a maximum of 16 *AMA PRA Category 1 Credits™*. Physicians should claim only credit commensurate with the extent of their participation in the activity.

The Royal College of Physicians and Surgeons of Canada recognizes conferences and workshops held outside of Canada that are developed by a university, academy, hospital, specialty society or college as accredited group learning activities.

Through an agreement between the American Medical Association and the European Union of Medical Specialists, physicians may convert AMA PRA Category 1 Credit™ to an equivalent number of European CME Credits® (ECMECs®). Information on the process of converting AMA PRA Category 1 Credits™ to ECMECs® can be found at: www.eaccme.eu.

ACGME Competencies:

This course is designed to meet one or more of the following Accreditation Council of Graduate Medical Education competencies:

- Medical Knowledge
- 

Registration Information:

*Physicians: \$575.00 (USD)

*Residents/Fellows in Training: \$450.00 (USD)

*Allied Health Professionals: \$450.00 (USD)

Your email address is used for critical information including registration confirmation, evaluation and certificate.

Each Participant will receive a link for an electronic syllabus only.

Registration by credit card (VISA, MasterCard or American Express) or check can be made through Harvard Medical School's secure online registration system at:

<https://cmeregistration.hms.harvard.edu/emergencyradiology2017>

Registration by check (draft on a US bank), please make payable to Harvard Medical School. Learners who choose to pay by check will be prompted to download an online form to send in with a payment. Telephone or fax registration is not accepted. Registration with cash payment is not permitted.

**There is an additional \$5 processing charge (non-refundable service fee)*

Upon receipt of your payment, you will receive an email confirmation. Be sure to include an email address that you check frequently.

Inquires:

By phone: (617-384-8600), Monday-Friday, 9:00am-5:00pm (ET) or by e-mail at:
ceprograms@hms.harvard.edu

Disclosure Policy:

Harvard Medical School (HMS) adheres to all ACCME Accreditation Criteria and Policies. It is HMS's policy that those who have influenced the content of a CME activity (e.g. planners, faculty, authors, reviewers and others) disclose all relevant financial relationships with commercial entities so that HMS may identify and resolve any conflicts of interest prior to the activity. These disclosures will be provided in the activity materials along with disclosure of any commercial support received for the activity. Additionally, faculty members have been instructed to disclose any limitations of data and unlabeled or investigational uses of products during their presentations.

Refund Policy:

Refunds, less an administrative fee of \$75, will be issued for all cancellations received two weeks prior to the start of the course. Refund requests must be received by postal mail, email, or fax. No refund will be issued should cancellation occur less than two weeks prior.

"No shows" are subject to the full course fee and no refunds will be issued once the conference has started.

Course Location:

All sessions will be held at the Richard B. Simches Research Center, 3rd floor, 185 Cambridge Street, Boston, MA 02114. The Mass General parking garages are designated for patients and their visitors. We recommend that course participants park in a nearby private parking lot or take public transportation.

<http://boston.bestparking.com/>

Only Mass General patients and their visitors are eligible for reduced parking rates. The day rate for all others using the MGH garages is \$48. *(Rates subject to change)*

On-line Registration:

To register or view activity information online visit:

<https://cmeregistration.hms.harvard.edu/emergencyradiology2017>

CME activities sponsored by Harvard Medical School are offered solely for educational purposes and do not constitute any form of professional advice or certification of competency. Practitioners should always consult additional sources of information and exercise their best professional judgment before making clinical decisions of any kind.



Faculty

Laura L. Avery, MD

Assistant Professor of Radiology,
Harvard Medical School
Assistant Radiologist,
Division of Emergency Radiology,
Massachusetts General Hospital

Paul A. Caruso, MD

Instructor in Radiology,
Harvard Medical School
Director, Pediatric Neuroradiology,
Massachusetts General Hospital
for Children

Urvi P. Fulwadhva, MD

Instructor in Radiology,
Harvard Medical School
Associate Radiologist,
Brigham and Women's Hospital

Brian B. Ghoshhajra, MD, MBA

Assistant Professor of Radiology,
Harvard Medical School
Service Chief, Cardiovascular Imaging,
Program Director, Cardiac Imaging
Fellowship,
Massachusetts General Hospital

Ritu R. Gill, MD, MPH

Assistant Professor of Radiology,
Harvard Medical School
Division of Thoracic Imaging,
Brigham and Women's Hospital

Howard T. Heller, MD

Instructor in Radiology,
Harvard Medical School
Division of Ultrasound,
Brigham and Women's Hospital

Amy F. Juliano, MD

Assistant Professor of Radiology,
Harvard Medical School
Staff Radiologist,
Massachusetts Eye and Ear Infirmary

M. Shahmir Kamalian, MD

Instructor in Radiology,
Harvard Medical School
Division of Emergency Radiology,
Massachusetts General Hospital

Bharti Khurana, MD

Assistant Professor of Radiology,
Harvard Medical School
Program Director of Emergency
Radiology Fellowship,
Brigham and Women's Hospital

M. Stephen Ledbetter, MD, MPH

Assistant Professor of Radiology,
Harvard Medical School
Chief of Radiology,
Brigham and Women's Faulkner Hospital

Michael H. Lev, MD, FACR, FAHA

Professor of Radiology,
Harvard Medical School
Director of Emergency Radiology,
Director of Emergency Neuroradiology,
Massachusetts General Hospital

Jacob C. Mandell, MD

Instructor in Radiology,
Harvard Medical School
Division of Musculoskeletal
Imaging and Intervention,
Brigham and Women's Hospital

Robert A. Novelline, MD, FACR

Professor Emeritus of Radiology,
Harvard Medical School
Honorary Radiologist,
Massachusetts General Hospital

Diego Nunez, MD, MPH, FACR

Harvard Medical School
Director Emergency Neuroradiology,
Brigham and Women's Hospital

Christopher A. Potter, MD

Instructor in Radiology,
Harvard Medical School
Division of Emergency Radiology,
Brigham and Women's Hospital

Tatiana Rocha, MD

Instructor in Radiology,
Harvard Medical School
Division of Emergency Radiology,
Brigham and Women's Hospital

Jeffrey Y. Shyu, MD, MPH

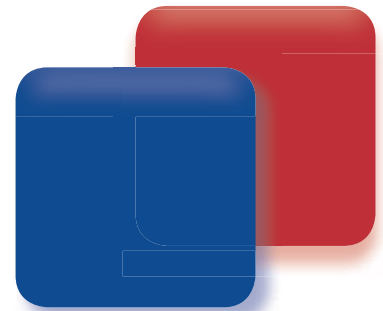
Instructor in Radiology,
Harvard Medical School
Division of Emergency Radiology,
Brigham and Women's Hospital

Ajay K. Singh, MD

Assistant Professor of Radiology,
Harvard Medical School
Radiologist,
Division of Emergency Radiology,
Massachusetts General Hospital

Stacy E. Smith, MD

Assistant Professor of Radiology,
Harvard Medical School
Chief and
Distinguished Barbara Weissman Chair,
Division of Musculoskeletal Imaging
and Intervention,
Associate Residency Program Director,
Brigham and Women's Hospital



Aaron D. Sodickson, MD, PhD

Associate Professor of Radiology,
Harvard Medical School
Division Chief,
Emergency Radiology and
Medical Director of CT,
Brigham and Women's Hospital

Jorge A. Soto, MD

Professor of Radiology,
Boston University School of Medicine
Chairman, Department of Radiology,
Boston Medical Center

Jennifer W. Uyeda, MD

Instructor in Radiology,
Harvard Medical School
Division of Emergency Radiology,
Brigham and Women's Hospital

Michele M. Walters, MD

Instructor in Radiology,
Harvard Medical School
Staff Pediatric Radiologist,
Physician Director of
Satellite Imaging,
Boston Children's Hospital

Jeremy R. Wortman, MD

Instructor in Radiology,
Harvard Medical School
Staff Radiologist,
Brigham and Women's Hospital

DAY 1	SATURDAY, JUNE 3, 2017	
7:00-7:55	Registration/Continental Breakfast	
7:55-8:00	Welcome and Introductions	Khurana
ABDOMINAL EMERGENCIES		
8:00-8:45	Trauma Protocols: How we do it (BWH, MGH, BU)	Shyu, Singh, Soto, Sodickson
8:45-9:00	Panel Discussion	Faculty
9:00-9:20	Grading Solid Organ Injury	Singh
9:20-9:40	Bowel and Mesenteric Trauma	Soto
9:40-10:00	Acute Abdominal Pain	Singh
10:00-10:05	Questions	Faculty
10:05-10:15	BREAK	
10:15-10:40	Bowel Obstruction and Complications	Soto
10:40-11:05	Pelvic Hemorrhage: Case Discussion	Uyeda
11:05-11:35	Biliary Tract Emergencies	Soto
11:35-12:00	ER Abdomen: Case Discussion	Fulwadhva
12:00-12:15	Questions	Faculty
12:15-1:15	LUNCH RECESS	On Own
NEURO/CHEST TRAUMA		
1:15-1:40	Head and Neck Trauma: Top Ten	Nunez
1:40-2:00	Maxillofacial Trauma	Novelline
2:00-2:30	Cervical Spine Trauma	Avery
2:30-3:00	Chest Trauma	Novelline
3:00-3:05	Questions	Faculty
3:05-3:15	BREAK	
MSK/PEDS TRAUMA		
3:15-3:40	Pediatric Trauma: What's Different	Walters
3:40-4:05	Imaging of Pediatric Head Trauma	Caruso
4:05-4:25	Commonly Missed Pediatric Fractures	Walters
4:25-4:45	Foot and Ankle Injuries	Mandell
4:45-5:15	Learning from Errors: Spine and Extremity Injuries	Khurana
5:15-5:30	Questions	Faculty
5:30	ADJOURN	

DAY 2	SUNDAY, JUNE 4, 2017	
7:15-7:55	Continental Breakfast	
7:55-8:00	Welcome	
NEUROEMERGENCIES		
8:00-8:35	Stroke Imaging Algorithm	Lev
8:35-9:00	How I Approach Neuro CT and CTA in ED	Potter
9:00-9:30	"Don't Miss" Non-Stroke Neurological Emergencies: Part 1	Lev
9:30-10:00	"Don't Miss" Non-Stroke Neurological Emergencies: Part 2	Lev
10:00-10:05	Questions	Faculty
10:05-10:15	BREAK	
10:15-10:40	Orbital Emergencies	Juliano
10:40-11:00	Head and Neck Non Traumatic Emergencies	Kalian
11:00-11:20	Pulmonary Embolism in ED	Ledbetter
11:20-11:40	Cardiac Imaging in ED	Ghoshhajra
11:40-12:00	Aortic Emergencies	Ledbetter
12:00-12:15	Questions	Faculty
12:15-1:15	LUNCH RECESS	On Own
CHEST, MSK, NON TRAUMATIC		
1:15-1:40	ER Chest: Case Discussion	Gill
1:40-2:05	Iatrogenic Chest Emergencies	Avery
2:05-2:30	Non Traumatic MSK Emergencies	Smith
2:30-3:00	Deep Venous Thrombosis: Pearls and Pitfalls	Heller
3:00-3:05	Questions	Faculty
3:05-3:15	BREAK	
ULTRASOUND		
3:15-3:40	Scrotal Emergencies	Rocha
3:40-4:05	First Trimester Emergencies	Wortman
4:05-4:30	ER Ultrasound: Case Discussion	Rocha
4:30-5:15	Learning form Errors: ER Imaging	Khurana
5:15-5:30	Questions	Faculty
5:30	ADJOURN	

*Please Note: Program changes/substitutions may be made without notice.