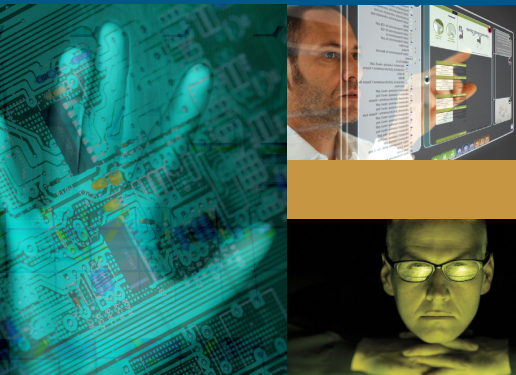




ATMAE

F O U N D A T I O N



ATMAE Foundation funds will support

- Two existing scholarships
- Additional scholarships
- Education
- Training
- Furthering ATMAE's growth and building a strong financial base

Sponsorship levels

Benefactor Club:

Individuals, students, academic institutions, or companies who contribute \$25 to \$99 in a year will receive a letter of appreciation, a "special" contributor ribbon to be worn at ATMAE events and a listing of your name in ATMAE's "Insider."

Friend's Club:

Individuals, students, academic institutions, or companies who contribute \$100 to \$999 in a year will receive a letter, certificate of appreciation, a "special" contributor ribbon to be worn at ATMAE events, a listing of your name in ATMAE's "Insider", recognition on the ATMAE Foundation web page and recognition in the Foundation annual report.

President's Club:

Individuals, students, academic institutions, or companies who contribute \$1,000 or more in a year will receive a letter, certificate of appreciation, a "special" contributor ribbon to be worn at ATMAE events, a listing of your name in ATMAE's "Insider", recognition on the ATMAE Foundation web page (including your logo), recognition in the Foundation annual report, recognition via a sign to be displayed during ATMAE's annual conference and recognition during the "Keynote General Session" from the podium. You will also receive a Bronze plaque for your display.

Charles Keith Circle:

Individuals, students, academic institutions, or companies who pledge \$10,000 or more in a year (either by annual contribution of \$1,000 or more or designation in wills) will receive a letter, certificate of appreciation, a "special" contributor ribbon to be worn at ATMAE events, a listing of your name in ATMAE's "Insider", recognition on the ATMAE Foundation web page (including your logo), recognition in the Foundation annual report, recognition via a sign to be displayed during ATMAE's annual conference and recognition during the "Key General Session" from the podium, press release, annual contributor logo to be utilized on promotional/branding materials and an invitation to an exclusive Chairman's reception during the annual ATMAE Conference. You will be listed as members of the Charles Keith Circle.

Sponsor today & make tomorrow possible.

We believe that partnership, invested personal interest and in general looking out for your neighbors and colleagues is the best way to ensure your own success and that of your industry. We challenge you to get involved – to help shape and support tomorrow’s leaders, tomorrow’s visionaries, and tomorrow’s technology creators.

Benefits of Sponsorship Contribution	Benefactor Club	Friend’s Club	President’s Club	Charles Keith Circle
Letter of appreciation	■	■	■	■
Special Contributor Ribbon for ATMAE Events	■	■	■	■
Recognition in ATMAE’s Publication <i>Insider</i>	■	■	■	■
Recognition on the ATMAE Foundation Web Page		■	■	■
Recognition in the ATMAE Foundation Annual Report		■	■	■
Logo displayed on Sign at ATMAE’s Annual Conference			■	■
Recognition during the “Key General Session” from the podium during ATMAE’s Annual Conference			■	■
Receipt of a Bronze Plaque for your display			■	■
Press Release Recognizing Your Support				■
Logo Recognition on ATMAE promotional/branding materials				■
Invitation to an Exclusive Chairmans’s Reception				■
Be Listed as a Member of the Charles Keith Circle				■

Note: You may also donate to the PhD Student Scholarship or Master Student Scholarship (any amount).

“For those of us that are industry, we often find ourselves faced with financial burdens that detract from our abilities to further our education. Through the ATMAE foundation’s scholarship opportunities, we find that we are able to realize some of our dreams, and reach the goals of obtaining higher levels of education. As a recipient of the Kate & Cliff Strandberg Scholarship Award, I have been able to take my pursuit, of obtaining a higher level degree, one step closer to completion. This has allowed me to further my studies while easing the struggles encountered by balancing other financial burdens. Truly, the ATMAE foundation has been making profound differences in our lives and will continue to do so for the years to come.”

— Matt Watson, Link-Belt Construction Equipment Company • Moorehead State University

“The “Dr. Clois E. Kicklighter Doctoral Student Scholarship Award” is a gracious reminder of the dedication of Dr. Kicklighter to the ATMAE organization. Named in his memory, this prestigious award is bestowed to students in doctoral level Industrial Technology programs as they prepare for advanced technology careers. Dr. Kicklighter championed the ATMAE foundation making it the premier repository for the advancement of technology that it is today. It is my utmost honor to receive the award and will be a great help in the pursuit of my degree. The award will be used to finish my dissertation in the Doctoral Program in Technology Management.”

— Sharon M. Rouse • Mitchell Community College/Indiana State University

It is important that ATMAE members help the association that helped them along the way. Together we are providing the workforce of the future!



Contact Us

John Hausoul
jhausoul@atmae.org
630-433-4514

How to Contribute

ATMAE Members may contribute to the ATMAE Foundation each year on their membership renewal form or by contacting ATMAE directly at john@atmae.org or www.atmae.org. The ATMAE Foundation also welcomes the sponsorship of special programs from industry & institutional partners that require the use of a 501(c)(3) organization to make contributions.



275 N. York Street, Suite 401
Elmhurst, IL 60126

The Association of Technology, Management, and Applied Engineering

