

ASPHALT

CALCIMA

California Construction And Industrial Materials Association

Asphalt made by California's essential materials producers is a **vital product** used in the creation and continuing use of our critical infrastructure and transportation systems.

ASPHALT STARTS HERE

01

To **CREATE** asphalt, producers combine crushed rock, sand, and asphalt binder. Reclaimed Asphalt Pavement (RAP), recycled plastic, and ground rubber from tires are also common asphalt components.



02

Once mixed, asphalt is loaded into trucks and **DELIVERED** to construction sites and infrastructure projects for use.



03

Asphalt is **USED** everywhere to make roads, bike paths, airport runways, school playgrounds, basketball courts, parking areas, and more. It is an essential product we all use in our everyday lives.



Asphalt helps build the California of today and tomorrow.

IF IT'S BUILT, WE'RE IN IT.

DID YOU KNOW?

Asphalt is recycled more than any other product in America.¹ By increasing the use of Reclaimed Asphalt Pavement, or RAP, by 10%, California projects can **reduce CO2 emissions by more than 92 million KG** – equivalent to reducing the annual emissions of approximately 20,000 passenger vehicles.

¹ pavementrecyclers.com/what-is-asphalt-recycling/#:~:text=Yes.,and%20its%20use%20is%20growing.%E2%80%9D

DID YOU KNOW?

Asphalt pavements can be placed and opened to traffic **within hours**, all while delivering a smooth, safe, and quiet ride that minimizes delays for drivers.

ASPHALT

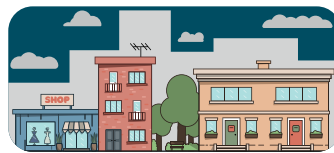
CALCIMA

California Construction And Industrial Materials Association

We are **essential** to our local infrastructure and economy, **sustaining** our environment and quality of life, and **engaging** our communities in positive, ongoing partnerships.

MAKING INFRASTRUCTURE PROJECTS HAPPEN

The asphalt produced in California is absolutely essential to long-lasting, safe, and reliable infrastructure and development.



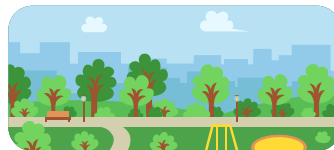
SUSTAINING OUR SHARED ENVIRONMENT

Our industry is putting time, energy, and resources into work that supports our environment, sustainable development, and California's decarbonization goals.



ENGAGING OUR COMMUNITIES

We are proud to support our local communities for the long term through education programs, scholarships, and internships, developing wildlife habitat and conservation areas, and donating resources and materials to emergency responders, public parks, community groups, and more.



SUPPORTING OUR ECONOMY

Distance matters. Our local operations throughout California mean that local projects have access to locally produced asphalt, which reduces costs and supports our local economies.



ABOUT CALCIMA

The California Construction & Industrial Materials Association (CalCIMA) is the statewide voice of the construction and industrial materials industry. With over 500 facilities throughout the state, our members produce the essential materials and minerals that build California.

Scan the code to learn more about the materials that CalCIMA members produce.



Learn more at www.calcima.org

FOLLOW US AT

-  @calcimarocks
-  @calcimarocks
-  @calcima7662
-  facebook.com/CalCIMA.org/
-  linkedin.com/company/calcima/