

READYMIX NEWS

ISSUE 26 MARCH 2026

PANMURE BRIDGE
SHOWCASES SPECIALIST
CONCRETE EXPERTISE



concretenz
READYMIX

IN THIS ISSUE

Message from the Chair	2	Firth Industries Adds Anti-Rollaway Tech	24-27
Farewell to Graham Payne	3	Bridgeman Concrete Delivers Puketapu Bridge Piling Mix	29-32
Concrete NZ Conference 2025	4	Allied Concrete Move to Ladderless Trucks	34-35
Concrete NZ Conference Awards 2025	5-16	NZIC's Health & Safety Journey	36-37
Plant Audit Scheme Awards	18-21	Higgins Concrete's Zero Harm Achievement	38-39
Holcim New Zealand's Role in the Panmure Basin Bridge	22-23		

MESSAGE FROM THE CHAIR

As we head into early 2026, I'd like to extend a warm welcome to all our Readymix members and the wider ready mixed concrete community. A new year always brings a sense of renewal and opportunity, and there is cautious optimism that 2026 will be a stronger year for construction activity than the subdued conditions many of us have worked through over the past few years. While challenges remain, the forward indicators suggest a more positive pipeline, and that is encouraging for our people, our plants, and our customers.

Before looking ahead, it is important to pause and acknowledge some outstanding individuals who were recognised at the recent awards evening held alongside the Concrete NZ Conference. On behalf of the Readymix Sector Group, I congratulate Brian Godfrey on receiving an Outstanding Contribution Award, and Graham Collie and James Mackechnie on being awarded Honorary Life Memberships. These honours recognise decades of service, leadership, and commitment to our industry, and they are richly deserved. Their contributions have helped shape the sector we work in today.

I would also like to acknowledge the recent passing of Graham Payne of Counties Readymix (see page 3) and Brett Beatson of Beacon Technical Services. Graham and Brett were well-known and respected members of the ready mixed concrete community, valued for expertise, integrity and willingness to support others across the sector. Their contributions to our industry will be remembered with appreciation, and thoughts are with families and colleagues.



Looking forward, 2026 will be a busy and important period for the Readymix Sector Group within Concrete NZ. Key technical work is underway, including the revision of *NZS 3121: Water and Aggregate for Concrete* and *NZS 3112: Methods of Test for Concrete*. These documents underpin quality, consistency, and confidence in our product, and member input into this work remains essential.

We are also continuing to explore the feasibility of establishing a Concrete Pumping Stakeholder Group within Concrete NZ. Health and safety - plus the wellbeing of our people - is a non-negotiable part of the ready mixed concrete industry and the wider construction sector. It is therefore fantastic to see in this issue of *Readymix News*, practical examples of member initiatives and achievements that are lifting standards and supporting safer outcomes across operations.

Finally, the next round of Joint Regional Forums will be upon us soon. These forums are an important opportunity to share updates, discuss challenges, and hear directly from members around the country. I look forward to seeing as many of you as possible in April and May.

Thank you for your continued engagement and commitment. I wish you all a safe, productive and successful year ahead.

Mike Botherway
Concrete NZ Readymix,
Committee Chair

FAREWELL TO A FRIEND - GRAHAM PAYNE



Concrete NZ acknowledges with sadness the passing of Graham Payne, founder of Counties Ready Mix, former President of the New Zealand Ready Mixed Concrete Association (NZRMCA), and a highly respected figure in the New Zealand concrete industry.

Graham established Counties Ready Mix in 1999 with a clear vision for quality, high standards and genuine care for both customers and staff. Over more than two decades, he built a business recognised for its professionalism, reliability and strong team culture.

Beyond his own company, Graham made a lasting contribution to the wider industry through his leadership, strategic insight and commitment to the long-term success of ready mixed concrete in New Zealand.

He was widely regarded as a kind and generous person, a driven and ambitious businessman, and someone deeply connected to his community. Graham's legacy lives on through the people he mentored, the company he built, and the many projects delivered to the highest standard.

Concrete NZ extends its sincere condolences to Graham's family, friends and colleagues.

STRONGER. GREENER. PROVEN.



BOSFA leads in Steel Fibre Reinforced Concrete solutions. Reducing concrete, steel, and labour while boosting long-term performance.

Backed by verified EPDs, our solutions deliver real, transparent sustainability. With past innovations such as CombiSlab and SigmaSlab, we've already pushed material and carbon reductions further than traditional methods ever could. And we're only just getting started.

The future of sustainable construction started with us – and in 2026, we'll drive it even further.



CALL 0800 665 755 OR VISIT BOSFA.COM



CONCRETE NZ CONFERENCE 2025 ENGAGEMENT, INNOVATION AND PARTNERSHIP

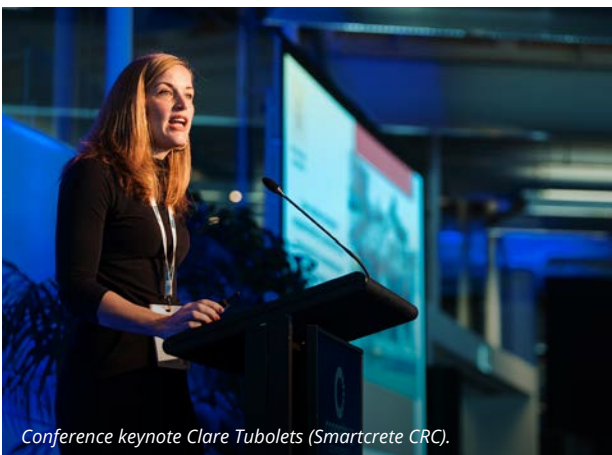
The 2025 Concrete NZ Conference at Auckland’s Viaduct Events Centre brought together a vibrant cross-section of the concrete industry - from suppliers and producers to designers, engineers, academics and contractors - for three days of collaboration, transformation and growth.

The event’s strong attendance and lively atmosphere reflected the sector’s shared commitment to innovation, sustainability and professional excellence. Across technical sessions and informal discussions, delegates exchanged ideas, shared experiences and explored practical ways to advance performance, quality and resilience in the built environment.

A particular highlight was the keynote line-up. Dr Andrew Minson, Director of Concrete and Sustainable Construction at the Global Cement and Concrete Association (GCCA), offered a compelling global perspective on decarbonisation and the industry’s pathway to net-zero. Clare Tubolets, CEO of Australia’s Smartcrete CRC, followed with a fascinating look at innovation across research, design and manufacturing. Their insights set the tone for a programme rich in technical depth and forward-looking discussion.

Equally important was the sense of community. The conference demonstrated the power of bringing people together to address shared challenges - from low-carbon materials and circular economy opportunities to advancing design standards and embracing new technologies. Every conversation reinforced the collective drive to ensure concrete continues to underpin sustainable, high-performing infrastructure for Aotearoa New Zealand.

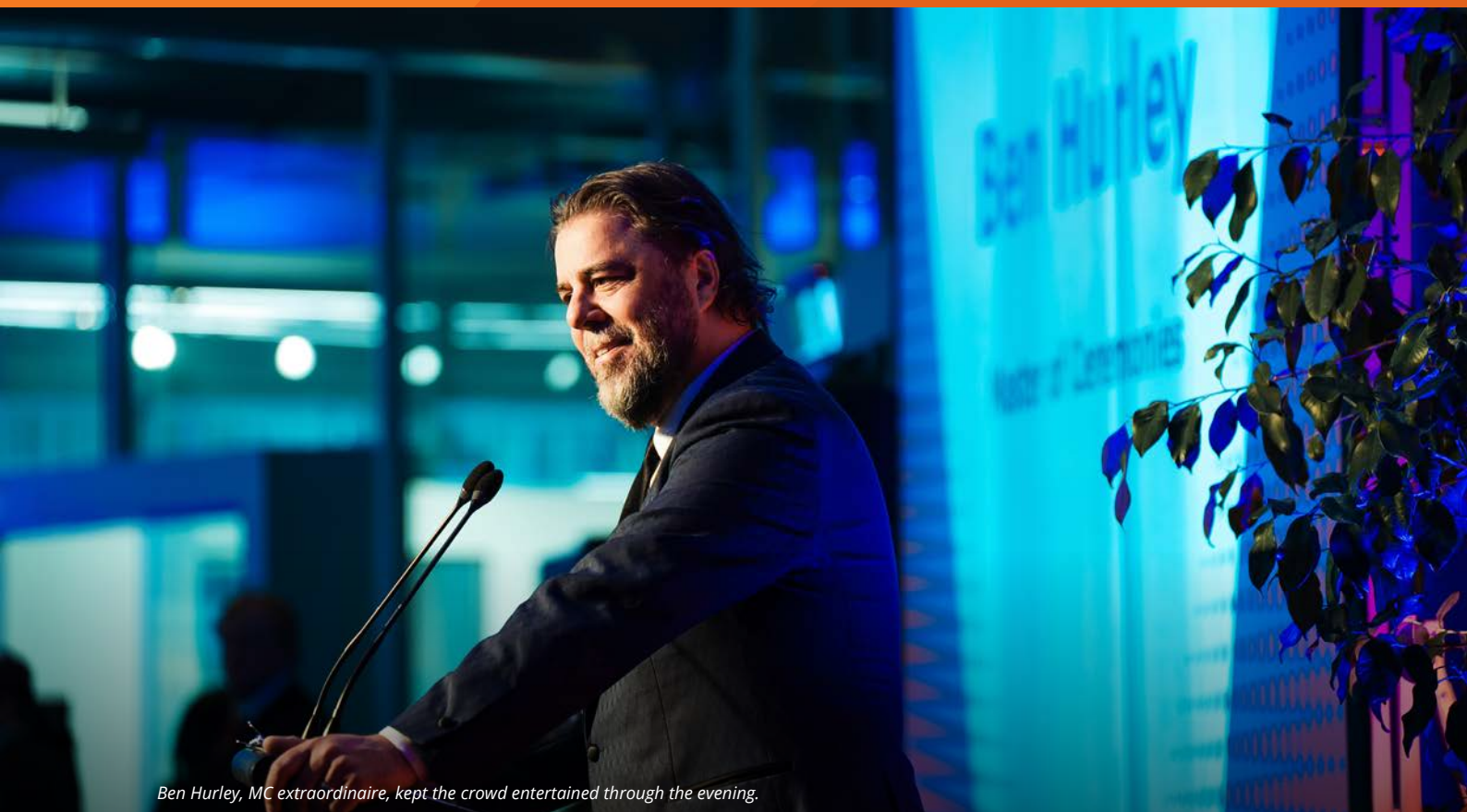
Concrete NZ warmly acknowledges the valued support of its Patrons - Golden Bay, Holcim and Pacific Steel - along with all sponsors and exhibitors whose partnership helped make the conference possible. Their commitment plays a vital role in fostering dialogue, sharing knowledge and strengthening connections across our diverse and dynamic industry.



Conference keynote Clare Tubolets (Smartcrete CRC).



Dr Andrew Minson (Global Cement and Concrete Association - GCCA).



Ben Hurley, MC extraordinaire, kept the crowd entertained through the evening.

RECOGNISING ACHIEVEMENT AT THE 2025 CONCRETE NZ CONFERENCE AWARDS

Held at Auckland's Viaduct Events Centre, the Concrete NZ Conference Awards once again recognised the individuals and teams whose commitment, innovation and collaboration continue to strengthen New Zealand's concrete industry.

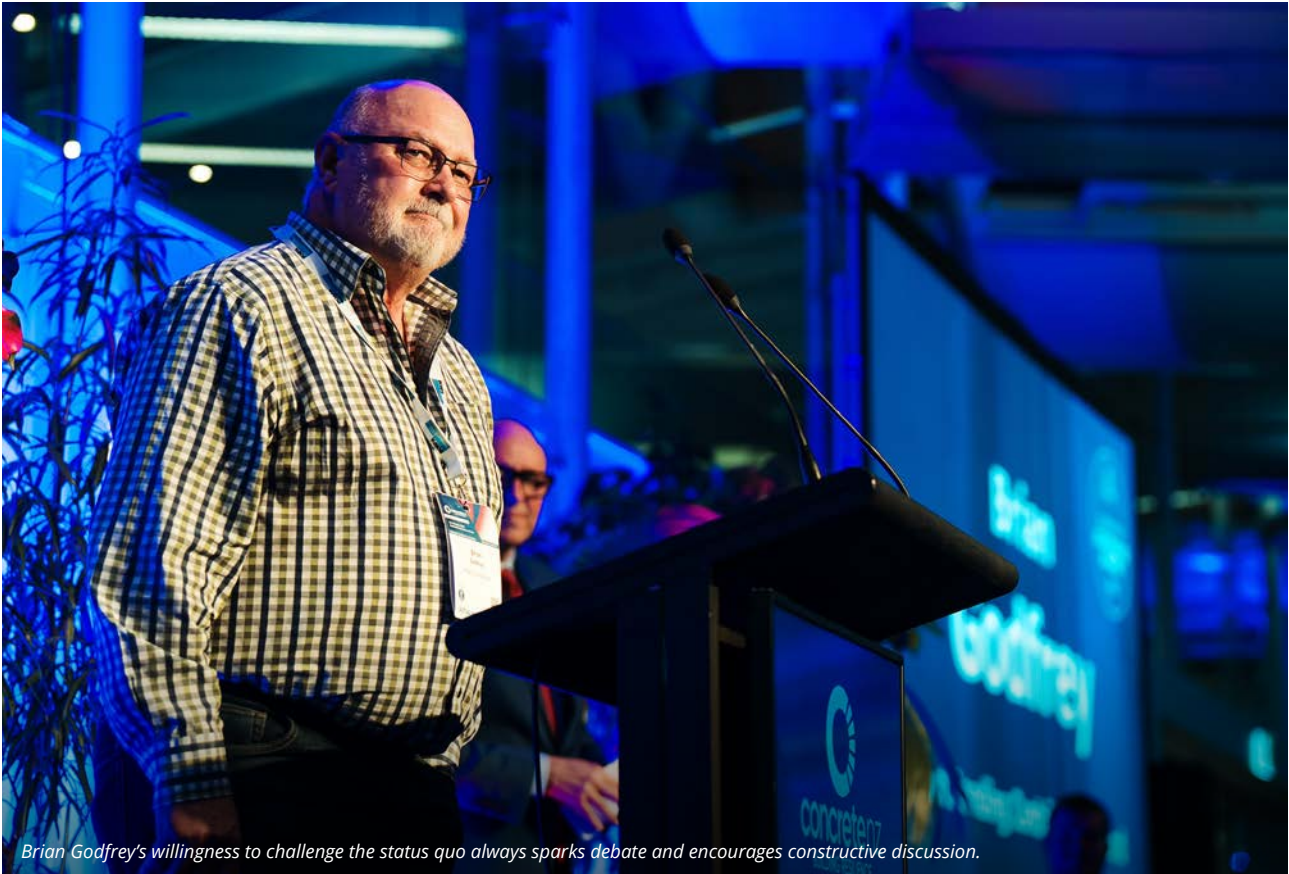
Hosted by the very amusing Ben Hurley, this year's awards showcased achievements in technical excellence, customer care, carbon reduction, health & safety, and diversity & inclusion.

The 2025 Awards continue Concrete NZ's mission to highlight the ingenuity and professionalism that define its members and the wider concrete community. See following pages.

AWARDS ACKNOWLEDGE OUTSTANDING SERVICE AND LIFELONG CONTRIBUTION

An important set of awards presented at the 2025 Concrete NZ Conference celebrated individuals whose service, leadership and integrity have profoundly shaped New Zealand's concrete industry.

These honours recognise contributions that extend well beyond individual organisations, influencing industry culture, technical practice, safety, sustainability and professional development across decades.



Brian Godfrey's willingness to challenge the status quo always sparks debate and encourages constructive discussion.

OUTSTANDING CONTRIBUTION AWARD BRIAN GODFREY

The Outstanding Contribution Award recognises an individual whose sustained service has made a visible and lasting difference to the concrete industry. In 2025, this honour was awarded to Brian Godfrey in recognition of his long-standing leadership, principled advocacy and deep commitment to industry improvement.

Brian has been a highly influential member of the Readymix Sector Group and its predecessor, the New Zealand Ready Mixed Concrete Association, serving with distinction as both Committee member and President. Throughout his service, he has demonstrated strong, values-based leadership and a willingness to engage constructively with complex and often challenging issues affecting the sector.

Well known for his readiness to challenge the status quo, Brian has never shied away from robust debate when it served the greater good of the industry. His thoughtful and forthright contributions – particularly in the area of health and safety – have helped shape safer, more



Brian Godfrey accepts his Outstanding Contribution Award from Concrete NZ chief executive Rob Gaimster.

responsible industry practices, raising expectations and standards across the sector.

Beyond his formal roles, Brian is widely respected as a mentor and supporter of others within the industry. His integrity, authenticity and collegial approach have left a lasting impression on colleagues and emerging leaders alike. Through both his professional contributions and personal example, Brian Godfrey has made an enduring impact on the concrete industry and is a most deserving recipient of the Outstanding Contribution Award.

HONORARY LIFE MEMBERSHIP GRAHAM COLLIE

Honorary Life Membership is awarded in recognition of a lifelong commitment to the concrete sector, reflecting exceptional service, leadership and contribution over many years. In 2025, Concrete NZ proudly conferred this honour on Graham Collie.

Graham’s career spans decades of hands-on involvement across concrete operations, during which he undertook virtually every business role. His leadership helped grow Atlas Concrete into a leading company while embedding strong values around quality, customer service and operational excellence. He has driven practical innovation, including sustainable solutions for concrete waste management in Auckland and initiatives to secure long-term sand supply, strengthening resilience for the wider sector.

A tireless advocate for industry improvement, Graham has been a long-serving supporter of the Plant Audit Scheme and the work of the association, including extensive service on the New Zealand Ready Mixed Concrete Association



Graham Collie’s wife Kathryn and son Andrew helped him celebrate on the evening.

(NZRMCA) Council and as long-time Chair of its Auckland region. He also played an important role in supporting the transition to Concrete NZ and, more recently, in refreshing the Readymix Sector Group to better engage members nationwide.

Equally important has been Graham’s investment in people and community – mentoring colleagues, supporting schools through the Gateway programme, and contributing to local sport, music and community organisations. His career reflects not only business success, but a genuine commitment to building capability and opportunity across the industry and beyond.



Graham Collie accepts his Honorary Life Membership of Concrete NZ from chief executive Rob Gaimster.



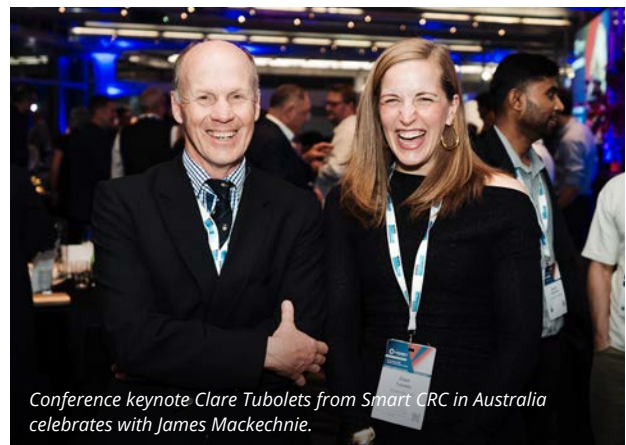
James Mackechnie acknowledges those that have assisted him during his career.

HONORARY LIFE MEMBERSHIP DR JAMES MACKECHNIE

A further Honorary Life Membership was awarded to Dr James Mackechnie, recognising a career that has profoundly influenced the technical, academic and professional foundations of New Zealand's concrete industry.

Over more than three decades, James' work has bridged academia, industry and professional service – a rare and powerful combination. Beginning his working life in South Africa, including time as a Research Officer at the University of Cape Town, he went on to establish a distinguished career in New Zealand. As a Senior Lecturer and CCANZ Fellow at the University of Canterbury, he educated generations of engineers while producing influential research that continues to guide durability practice, standards and specifications.

In industry, James has held senior technical roles with Allied Concrete, applying academic rigour to real-world materials challenges. His research into supplementary cementitious materials and engineered sands has supported more sustainable



Conference keynote Clare Tubolets from Smart CRC in Australia celebrates with James Mackechnie.

concrete practice, earning recognition including the Sandy Cormack Prize for research excellence.

James has also provided outstanding professional leadership – authoring key technical publications, contributing across ready mixed, precast and cement sectors, and chairing the Standards Committee responsible for the 2021 revision of NZS 3104. As President of the New Zealand Concrete Society and as Education, Training and Research Manager for Concrete NZ, he consistently demonstrated vision, generosity and integrity, leaving a lasting legacy across the profession.

CONCRETE INDUSTRY APPRENTICE OF THE YEAR TODD MAITLAND OF BROWNMORE CONCRETE IN THE BAY OF PLENTY

Bay of Plenty's Todd Maitland of Brownmore Concrete was named the 2025 Concrete Industry Apprentice of the Year, recognised for his determination, skill and commitment to mastering his trade.

Having recently completed his Concrete Construction Skills (Level 3) qualification, Todd has impressed employers and trainers alike with his reliability, work ethic and enthusiasm for continuous learning.

Overcoming significant challenges through a tailored learning approach, Todd has demonstrated that perseverance and the right support can deliver outstanding results.

Beyond work, he serves as vice-captain of New Zealand's first Whaikaha men's basketball team and featured in BCITO's *Building Abilities*

campaign, inspiring others to pursue careers in the trades. His success highlights the strength of New Zealand's concrete apprenticeship system, supported by BCITO and Concrete NZ.

During January 2026 Todd captained the New Zealand Whaikaha basketball team at the Ivor Burge National Championships in Ballarat, Australia, where he was recognised as the Defensive Player of the Tournament.



Todd Maitland with Mum and Dad (Tina and Chris Maitland).



Todd Maitland celebrates with Rex and Jennifer Podmore of Brownmore Concrete.



PRODUCER – TECHNICAL EXCELLENCE AWARD HOLCIM AND BRIDGEMAN CONCRETE FOR THE PUKETAPU BRIDGE, HAWKE'S BAY

Recognising a producer's role in delivering a project or initiative that demanded innovative solutions, the award highlights creativity and technical excellence in action.

Following Cyclone Gabrielle's devastation, a new two-lane Puketapu Bridge was built to reconnect isolated communities and restore essential transport links.

Holcim New Zealand supplied over 1,000 m³ of specialised low-heat, durable concrete, developed through extensive pre-pour trials to ensure resilience, thermal performance and long-term structural integrity.

Bridgeman Concrete supplied tremie concrete for six massive piles, overcoming strict thermal, flow and strength requirements.

With 50 percent ground-granulated blast-furnace slag to cut embodied carbon and VERIFI technology for real-time spread control, Bridgeman delivered

accuracy and sustainability on a demanding project.

The judges felt both companies demonstrated outstanding technical skill and innovation on the Hawke's Bay's newest bridge, delivering specialised mixes for deck, abutments and deep piles that rebuilt vital infrastructure with resilience and sustainability.



Dave Barker of Holcim and Todd Matchett of Bridgeman Concrete flank Concrete NZ's Paul Donoghue.

PRODUCER – EXTRA DISTANCE AWARD

COUNTIES READY MIX BY HIGGINS CONCRETE FOR PROJECT ELECTRON AT NZ STEEL'S ELECTRIC ARC FURNACE, GLENBROOK

This award is given in appreciation of a producer's involvement in a project or initiative that demands uncompromising commitment to customer satisfaction.

Counties Ready Mix has supplied more than 10,000 cubic metres of concrete to Project Electron since June 2024, the highlight being an 823 m³ slab pour completed flawlessly within a live steel mill.

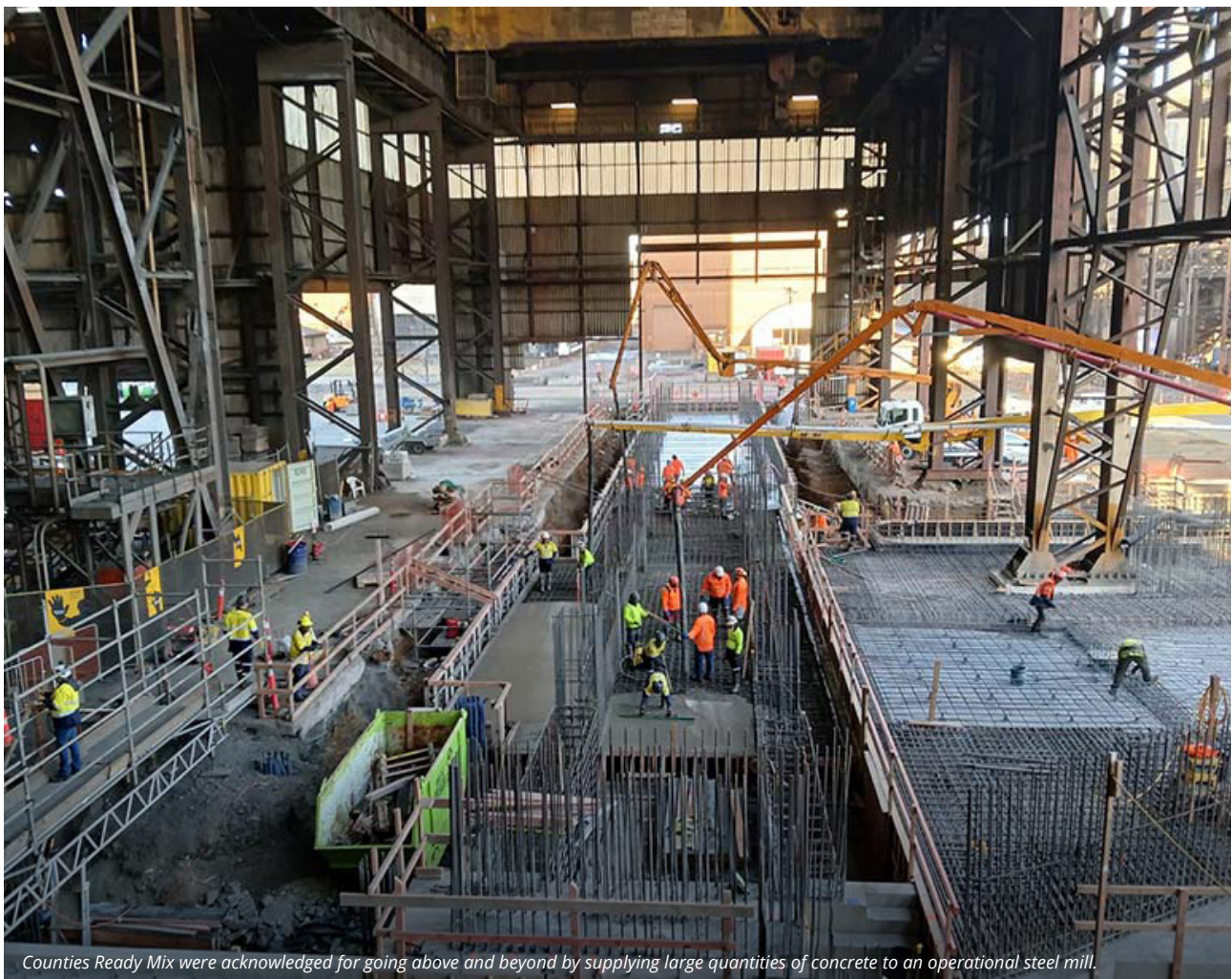
This achievement combined precise logistics, sustainable mix innovation and seamless teamwork, ensuring client confidence and supporting one of New Zealand's largest decarbonisation projects.

The judges commended Counties Ready Mix for their impeccable delivery at Project Electron, where precise coordination, sustainable innovation

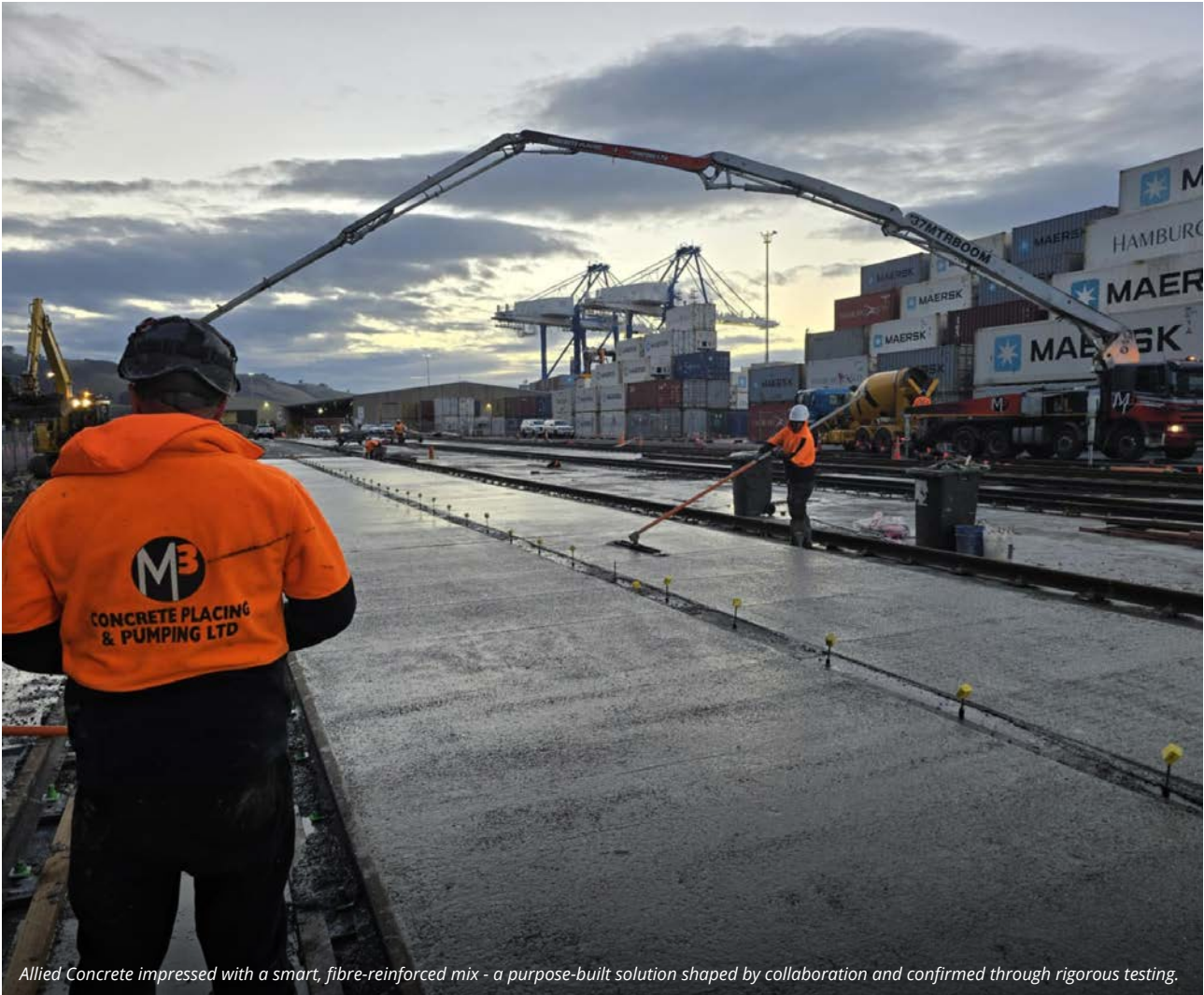
and collaboration under challenging conditions demonstrated a willingness to go above and beyond.



Kyle Dunn and Turei Smart of Counties Ready Mix accept their award from Paul Donoghue of Concrete NZ.



Counties Ready Mix were acknowledged for going above and beyond by supplying large quantities of concrete to an operational steel mill.



Allied Concrete impressed with a smart, fibre-reinforced mix - a purpose-built solution shaped by collaboration and confirmed through rigorous testing.

PRODUCER - EXTRA DISTANCE AWARD - HIGHLY COMMENDED ALLIED CONCRETE FOR THE PORT OTAGO RAIL PAD REPLACEMENT PROJECT, PORT CHALMERS

Supplying over 3,000 m³ of a bespoke 40 MPa fibre-reinforced mix, Allied Concrete combined trial pours, rigorous testing and BarChip fibre innovation.

Their collaboration with Martinus Rail delivered safer operations, labour savings and efficiency improvements - exemplifying a true extra-distance approach.

The judges felt Allied Concrete's contribution demonstrated genuine innovation and teamwork, delivering a tailored fibre-reinforced solution proven through extensive testing.

The result improved both safety and performance, highlighting the company's willingness to go beyond expectations.



Sarn Hanger of Allied Concrete accepts the award from Paul Donoghue on behalf of Allied Concrete.

DIVERSITY & INCLUSION AWARD

OFF THE WALL CONSTRUCTION FOR ITS DIVERSITY AND INCLUSION INITIATIVES

Shining a light on organisations and individuals committed to advancing their culture, the award celebrates those who actively embrace diversity and inclusion.

Off the Wall's workforce reflects the communities it serves, embracing multiple cultures, supporting wāhine "on the tools" and providing flexible arrangements for working mothers.

By fostering open communication, celebrating cultural identity and empowering every voice, they have built a workplace where inclusion drives stronger teams and better outcomes.

The judges applauded Off the Wall Construction, noting that the first steps to improvement can often be the most difficult.

Their commitment to cultural representation, supporting women and working mothers, as well as creating an inclusive workplace, strengthens teams and drives productivity.



Matt du Plessis from Off the Wall Construction is presented with his award by Rob Gaimster.



Off the Wall Construction champions diversity, building a team that mirrors the communities it works within.



Through a focus on growth and collaboration, Nauhria enables every team member to drive progress and enhance workplace safety and wellbeing.

HEALTH, SAFETY & WELLBEING ACHIEVEMENT NAUHRIA PRECAST FOR ITS LIGHT, WATER, AIR & CARE PROGRAMME

Organisations that have demonstrated innovation and leadership in improving health, safety and wellbeing across the concrete industry are celebrated by the award.

Nauhria has embedded these key requirements into its culture through creative initiatives such as PPE vending machines, dust extraction, closed-loop water systems and factory design enhancements.

Their commitment to continuous improvement empowers every employee to contribute, setting a higher standard for safety and wellbeing in the precast sector.

The judges responded positively to Nauhria's initiative for its holistic approach, embedding invention, culture and operational excellence

to support measurable safety and wellbeing outcomes.



The Nauhria Precast team celebrate their health, safety and wellbeing achievement.

CARBON REDUCTION AWARD

GOLDEN BAY FOR ITS ALTERNATIVE FUELS & SUSTAINABLE ENERGY PROGRAMME

Honouring organisations that have taken meaningful steps to cut their carbon footprint, this award highlights initiatives helping the concrete industry reach its 2030 and 2050 emissions-reduction goals.

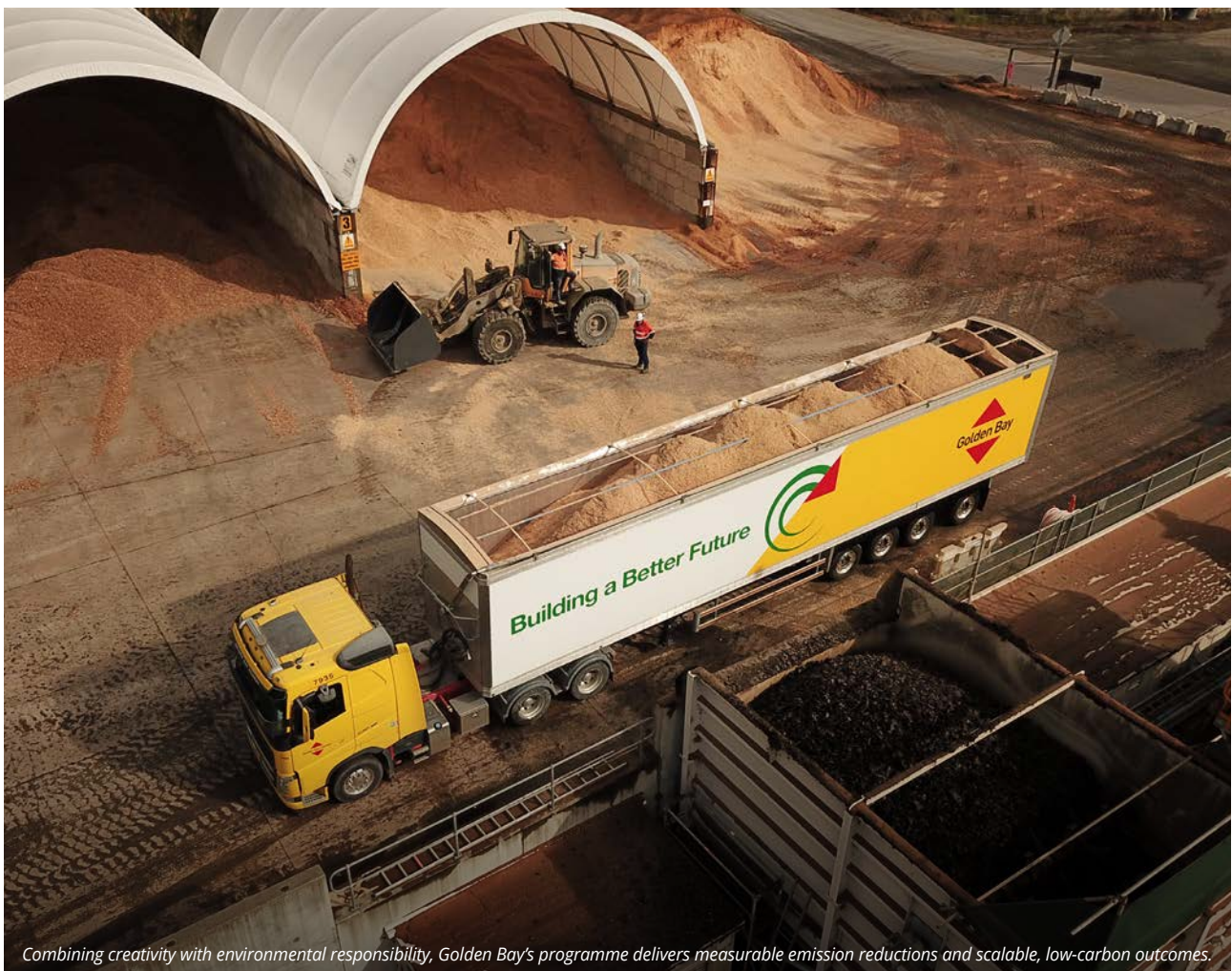
By achieving over 65 percent coal substitution through biomass, end-of-life tyres and high-calorific waste streams, Golden Bay has cut emissions, diverted landfill waste and pioneered scalable solutions. Their programme demonstrates innovation, environmental stewardship and alignment with New Zealand's net-zero roadmap.

The judges recognised this achievement as groundbreaking for the industry, noting that successful integration of alternative fuels that has already delivered major carbon savings.

With a near-term goal of reaching 85-90 percent coal substitution, the initiative shows bold leadership, technical innovation and a clear pathway toward transforming industry for a sustainable future.



Ben Taylor and Jarod Wilson of Golden Bay receive their award from Rob Gaimster.



Combining creativity with environmental responsibility, Golden Bay's programme delivers measurable emission reductions and scalable, low-carbon outcomes.



CARBON REDUCTION AWARD - HIGHLY COMMENDED ATLAS CONCRETE FOR ITS TAKAPUNA HEAD OFFICE, RETAIL & WAREHOUSE PROJECT

By integrating 'Greenstone' low-carbon concrete mixes with up to 30 percent fly ash for the in-situ floors, Atlas Concrete achieved carbon reductions of over 20 percent compared with standard concretes - while remaining cost-neutral, high-quality and durable.

The judges felt the new Atlas HQ demonstrated practical and transparent carbon savings, showcasing the company's strong commitment to a low-carbon future by investing in and using its own low-carbon concrete in the build.



CONFERENCE PATRONS



CONFERENCE SPONSORS



The logo for EcoSure, with 'Eco' in green and 'Sure' in red. The 'o' in 'Eco' is stylized with a circular arrow around it.

EcoSure[®]

**NEW ZEALAND'S
LOWEST CARBON
GP CEMENT.**

A vertical wall covered in dense green ivy, positioned on the left side of the advertisement.

**BUILDING A
BETTER FUTURE.**

The Golden Bay logo, featuring a red diamond shape above the text 'Golden Bay' and another red diamond shape below it.

Golden Bay[®]



Terry Whiteman of Terry's Concrete receives his Plant Audit Scheme Gold Award from the Scheme's Chair Paul Donoghue of Concrete NZ.

PLANT AUDIT SCHEME GOLD AWARDS RECOGNISE A DECADE OF CONSISTENT EXCELLENCE



Fourteen ready-mixed concrete plants have achieved Gold status in the 2025 Concrete NZ Plant Audit Scheme Excellence Awards, recognising more than a decade of sustained quality and performance.

Among this distinguished group are Allied Concrete's Alexandra, Nelson, Wanaka, Washdyke (Timaru) and Penrose plants, each demonstrating long-term commitment to best practice and compliance. Atlas Concrete's Takapuna and Wiri plants and Terry's Concrete's Te Horo plant also maintained their well-earned Gold standing.

Holcim New Zealand achieved Gold for its Horotiu, Tauranga, Whakatane, Setters Line (Palmerston North), Christchurch North and Bombay plants, reflecting the company's sustained focus on quality assurance and continuous improvement.

GOLD STATUS

- Holcim (New Zealand) - Horotiu - Zone 4
- Holcim (New Zealand) - Tauranga - Zone 4
- Holcim (New Zealand) - Whakatane - Zone 4
- Allied Concrete - Alexandra - Zone 1
- Allied Concrete - Nelson - Zone 1
- Allied Concrete - Wanaka - Zone 1
- Allied Concrete - Washdyke (Timaru) - Zone 1
- Holcim (New Zealand) - Christchurch North - Zone 1
- Holcim (New Zealand) - Setters Line, Palmerston North - Zone 2
- Terry's Concrete - Te Horo - Zone 2
- Allied Concrete - Penrose - Zone 3
- Atlas Concrete - Takapuna - Zone 3
- Atlas Concrete - Wiri - Zone 3
- Holcim (New Zealand) - Bombay - Zone 3

The Awards were presented during the 2025 Concrete NZ Conference Awards at Auckland's Viaduct Events Centre, celebrating plants that have consistently met - and maintained - the highest standards under the industry's independent audit framework.



The Holcim team celebrate maintaining the Gold status of six plants under the Plant Audit Scheme.

The Plant Audit Scheme, covering around 200 plants nationwide, operates a Gold, Silver and Bronze recognition system to highlight exceptional performance and transparency in meeting the stringent requirements of NZS 3104: *Specification for Concrete Production*.

SILVER STATUS

- Bowers Brothers Concrete - Hamilton - Zone 4
- Bowers Brothers Concrete - Matamata - Zone 4
- Bowers Brothers Concrete - Morrinsville - Zone 4
- Bowers Brothers Concrete - Putaruru - Zone 4
- Holcim (New Zealand) - Matamata - Zone 4
- Holcim (New Zealand) - Taupo - Zone 4
- Allied Concrete - Ashburton - Zone 1
- Allied Concrete - Cromwell - Zone 1
- Allied Concrete - Renwick - Zone 1
- Allied Queenstown Concrete - Frankton, Queenstown - Zone 1
- Christchurch Ready Mix Concrete - Belfast No.1 - Zone 1
- Christchurch Ready Mix Concrete - Belfast No.2 - Zone 1
- Christchurch Ready Mix Concrete - Rolleston - Zone 1
- McGregor Concrete - Te Anau - Zone 1
- Firth Industries- Belmont - Zone 2
- Higgins Concrete - Porirua - Zone 2
- Higgins Concrete - Wellington - Zone 2
- Holcim (New Zealand) - Ohau - Zone 2
- PERTH Concrete - Wanganui - Zone 2
- Atlas Concrete - Kumeu - Zone 3
- Atlas Concrete - Panmure - Zone 3
- Atlas Concrete - Silverdale - Zone 3
- Atlas Concrete - Warkworth - Zone 3
- Duracrete Products - Kauri - Zone 3
- Formstress Precast - Waiuku - Zone 3
- Holcim (New Zealand) - Avondale - Zone 3



To achieve an Excellence Certificate, a plant must complete the audit period without corrective actions or testing concerns. Recognition levels reflect continuous years of achievement - 3+ years for Bronze, 5+ years for Silver, and 10+ years for Gold.

Concrete NZ Chief Executive Rob Gaimster congratulated the 2025 recipients, noting that their achievement represents the very best in New Zealand's concrete production standards.

"Maintaining Gold status for ten or more consecutive years is a remarkable demonstration of consistency and professionalism," says Rob.

"The Plant Audit Scheme remains the industry's quality benchmark, giving specifiers and clients confidence that their concrete is produced under rigorous, independently verified standards.

"Congratulations to Allied Concrete, Atlas Concrete, Terry's Concrete and Holcim for continuing to set a high bar for excellence nationwide."

BRONZE STATUS

- Firth Industries - Taupo - Zone 4
- Christchurch Ready Mix Concrete - Hornby - Zone 1
- Firth Industries - Amberley - Zone 1
- Firth Industries - Bromley - Zone 1
- Firth Industries - Christchurch (Hornby) - Zone 1
- Higgins Concrete - Richmond - Zone 1
- McGregor Concrete - Winton - Zone 1
- Wrey's Bush Concrete Products - Otautau - Zone 1
- Byfords Read-Mix - Taihape - Zone 2
- Firth Industries - Paraparaumu - Zone 2
- Higgins Concrete - Waingawa - Zone 2
- Upper Hutt Ready Mix Concrete - Upper Hutt - Zone 2
- Atlas Concrete - Maungaturoto - Zone 3
- Firth Industries - Mangawhai - Zone 3
- Firth Industries - Wellsford - Zone 3
- Virgin Concrete - Kamo - Zone 3



AED AUTOKRAFT

ELECTRICAL AND DIESEL

Authorised NZ Dealer of **MAX-SAFE** Products

SAFETY SOLUTIONS FOR HEAVY VEHICLES

ANTI-ROLLAWAY BRAKE SYSTEM Automatically Brake for Greater Safety	BLINDSPOT MONITORING Greater Visibility for Operators
REVERSE ASSISTANCE Automatically Brake for Greater Safety	AI PEDESTRIAN PROTECTION Detects a Pedestrian in the Work Zone

MAX-SAFE
EMPOWERING COMPANIES TO SAVE LIVES

AUTOKRAFT
ELECTRICAL AND DIESEL
📞 06 359 0100 🌐 aed.nz
📍 691 Tremaine Ave Palmerston North

📱 SCAN ME



Te Kōpua o Hiku showcases the vital role of ready mixed concrete suppliers, with Holcim delivering complex, high-risk work safely and to a high standard.

PUSHING THE LIMITS OF PERFORMANCE: HOLCIM'S ROLE IN THE PANMURE BASIN BRIDGE

The replacement of Auckland's Panmure Basin Bridge - *Te Kōpua o Hiku* - represents more than a much-needed infrastructure upgrade, it is also a compelling example of how specialist concrete expertise can play a decisive role in enabling complex structural solutions, particularly where the margin for error is virtually zero.

Originally constructed in 1984 as a timber arch pedestrian bridge, the former Jubilee Bridge had reached the end of its service life by 2023. Material deterioration, structural limitations and rising maintenance costs prompted Auckland Council to approve a full replacement as part of its 2021-2031 infrastructure programme. The new bridge restores a critical walking and cycling connection across the basin, while delivering a structure designed for durability, resilience and long-term performance.

The replacement bridge is a 60-metre-long, 10-metre-high arch structure incorporating twin steel circular hollow section arches supporting a 3.2-metre-wide walkway. While visually elegant, the design relied on one of the most technically demanding concrete operations imaginable: pumping concrete into fully enclosed steel arches, with no tolerance for blockage, segregation or uneven loading.

A HIGH-RISK CONCRETE CHALLENGE

Unlike conventional concrete placements, filling hollow steel arches presents extreme risks. Once pumping begins, any interruption or blockage can have catastrophic consequences. In this case, the concrete had to be pumped simultaneously into both arches, maintaining perfect balance at all times. Any imbalance in loading could have destabilised the structure, potentially resulting in failure of the entire arch system.

During the early stages of the project, the contractor identified the need for a concrete mix capable of achieving a demanding combination of high flow, low viscosity and long-term stability. Given the technical requirements and potential risks associated with pumpability, segregation and load imbalance, Holcim was approached to provide specialist support in developing a suitable solution.

With less than two weeks' notice, Holcim's technical team accepted the challenge.

ENGINEERING THE SOLUTION

The concrete mix developed for the project needed to meet several competing requirements. It had to be sufficiently fluid to travel long distances through steel sections, while remaining highly stable to prevent segregation. Shrinkage needed to be tightly controlled to avoid internal stresses once cured, and workability had to be retained long enough to accommodate a complex, multi-pump operation.

The solution was a low-viscosity, highly stable, low-shrinkage concrete with extended workability retention. The pour itself required exceptional coordination: four concrete trucks discharging simultaneously through four pumps - one at each corner of the structure - at identical rates to ensure equal loading of both arches throughout the operation.

Given the consequences of failure, Holcim implemented a level of quality control far beyond standard practice. Two days prior to the pour, the pumping contractor conducted a full pumping trial at the plant yard to validate performance. On the day of the pour, each aggregate was sampled and sieved to confirm grading consistency, while admixture dosing systems were checked for

accuracy. Every concrete load was tested for spread and bleed under pressure before being released.

Although not specified, additional workability-retaining admixtures were incorporated to provide further assurance that performance would be maintained throughout the pour.

DELIVERING UNDER PRESSURE

In total, 60 tonnes of concrete - 30 tonnes per arch - were pumped without a single blockage or issue. The moment concrete emerged from the overflow tubes at the crown of the arches confirmed complete filling and marked a successful conclusion to one of the highest-risk pours undertaken on the project.

The successful execution of the Panmure Basin Bridge arch pour reinforced Holcim's reputation as a supplier capable of delivering innovative, technically demanding solutions. It also demonstrated the value of early collaboration, rigorous testing and disciplined execution when working at the limits of concrete performance.

Projects like *Te Kōpua o Hiku* highlight the critical role readymix suppliers play in enabling modern infrastructure. In this case, Holcim's willingness to take on high-risk work - and deliver it flawlessly - helped ensure a vital Auckland connection was completed safely, efficiently and to the highest standard.





FIRTH INDUSTRIES ADDS ANTI-ROLLAWAY TECH TO THEIR HEAVY VEHICLES

Firth Industries is installing the MAX-SAFE Maximum Safety Anti-Rollaway Brake™ Solution to provide world-class safety on over 350 concrete trucks.

The innovation was chosen after Firth's Health, Safety, Environment and Sustainability (HSE) team, led by André van Pletzen, conducted an extensive evaluation of rollaway safety offerings from ANZ, Asia and the UK.

With diverse fleet dynamics (manual, automatic, fuel and EV), the company aims to eliminate heavy vehicle rollaways as a safety risk.

While Firth has had no major incidents due to heavy vehicle (HV) rollaway incidents, several HV rollaway accidents have occurred across New Zealand in recent years.

Safety is a core priority, so Firth wanted a proven solution to prevent vehicle rollaways - caused by operator error or faulty park brake systems - to keep staff, contractors, and the public safe.

BUSINESS OVERVIEW

Firth Industries has developed, manufactured and delivered concrete products in New Zealand for nearly a century.

Employing over 700 people across 72 plants nationwide, Firth's fleet includes approximately 250 vehicles plus 100 owner-driver subcontractors carrying concrete bowls. These vehicles often operate around the clock, with drivers working shifts to meet customer deadlines, operational consenting, traffic and weather challenges.

Safety, innovation and environmental sustainability are key values. In 2020, Firth began transitioning its fleet to newer, lower-emission vehicles.

As of 2024, 30% of the fleet is under three years old, including New Zealand's first 8-wheeler EV concrete truck based in Manukau. The remaining 70% (about 200 vehicles) are less than 10 years old. Firth has also developed a New Zealand-built

hybrid concrete truck, based on a diesel chassis with a fully electric concrete bowl.

THE SAFETY CHALLENGE

After various significant rollaway incidents in the wider New Zealand trucking industry, Firth reviewed its risk exposure. Despite experienced drivers, the variety of vehicles (manual, automatic, and EV) increased the risk of human error.

Manual drivers typically ensure the vehicle is in gear and the parking brake applied before exiting, but automatic drivers can easily forget to apply the parking brake after selecting neutral.

To reduce this risk, Firth sought a robust engineering solution that would prevent unintended vehicle movement, even if the parking brake was not applied or applied incorrectly. While existing audio alarms helped prevent incidents, a more reliable, proactive solution was necessary.

"The MAX-SAFE Anti-Rollaway solution has been a major safety investment for Firth. While it is not the cheapest solution on the market, it is the best. We are on a journey to improve safety and raise industry standards and see this as a legacy project."

ANDRÉ VAN PLETZEN | HEAD OF ENVIRONMENT, HEALTH, AND SAFETY, FLETCHER BUILDING CONCRETE DIVISION

THE ROLLOUT

The roll-out has seen MAX-SAFE Anti-Rollaway progressively retro-fitted on all of Firth's heavy vehicles, as well owner-driver vehicles. The Firth fleet consists of Isuzu, UD and Hino trucks which are in heavy use Monday to Friday.

To ensure minimal disruption to truck availability and service levels, the solution has been installed by trained AED MAX-SAFE installers and dealers on week-days and week-ends, with approximately two vehicles being able to be retro-fitted per day per installer team.

As of September 2024, 260 trucks across the country have been upgraded with this safety prevention, ensuring Firth trucks are no longer susceptible to rollaway. The final 70 trucks will be installed over the coming 10 months.

AED is project managing the roll-out in conjunction with Firth Regional HSE Advisors and Operational teams.

For each location, AED has organised installers and certifiers to manage, test and qualify the installation before the concrete truck is released back into the fleet.

MAX-SAFE has also put together an easy to use training module that is being rolled out to drivers at the same time.

According to the Firth team, "It has been a positive experience working with AED. It has been a massive task with many challenges, and communication was essential. The AED team has been professional, transparent and proactive when tasked in managing the fitout and certification process. The training module has been well received too."



OUTCOME AND VALUE

According to André, Firth had a responsibility to prevent one of the most avoidable types of safety accidents which could lead to tragic consequences.

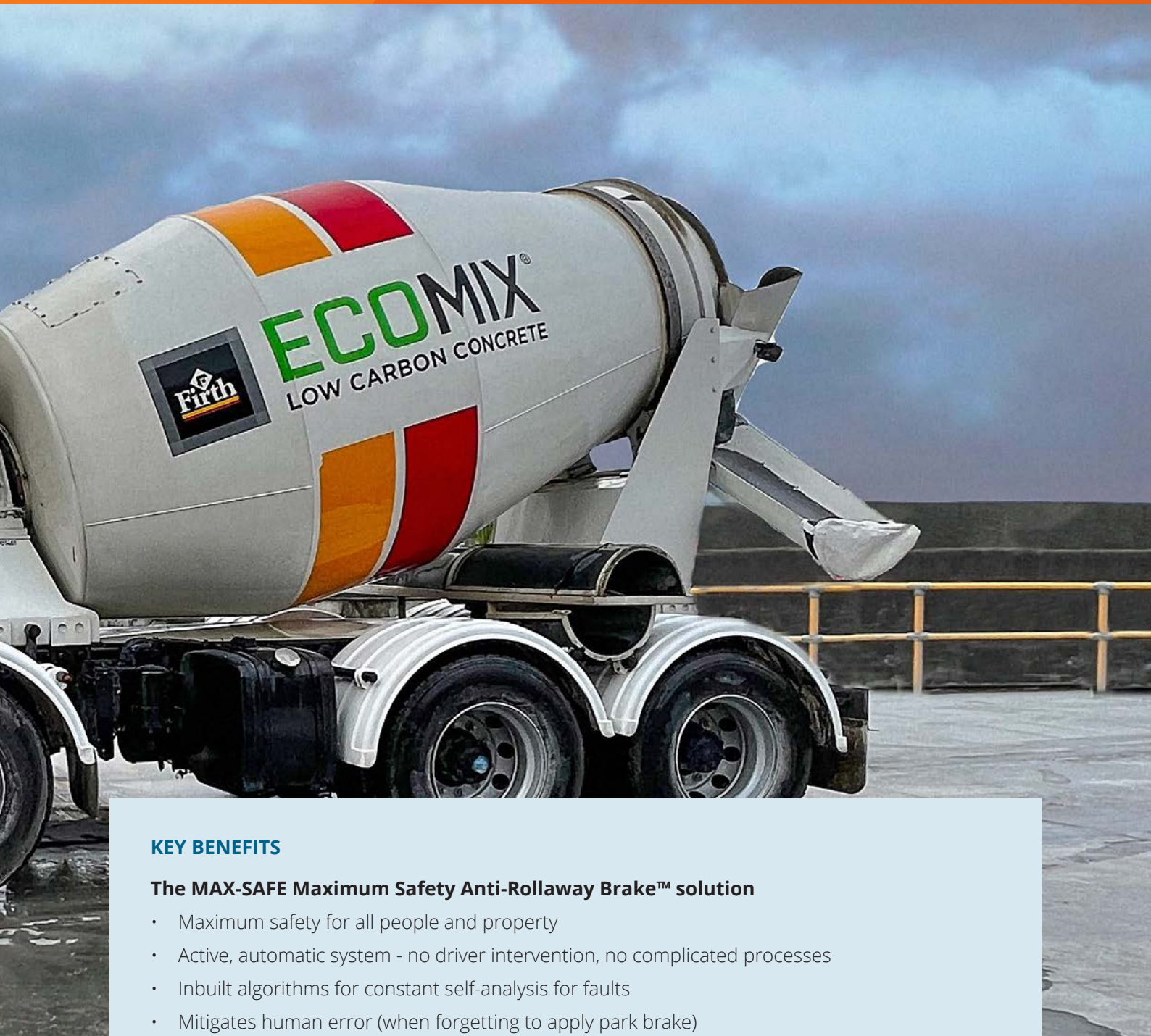
“The MAX-SAFE Anti-Rollaway Solution has been a major safety investment for Firth,” he said. “While it is not the cheapest solution on the market, it is the best.

“With our business driven by the safety of not only our people but all our stakeholders, we look for innovative approaches to support our drivers in

ways that are beneficial to the business and ensure our drivers are supported to be safe.

“We are on a journey to improve safety and raise industry standards and see this as a legacy project.”





KEY BENEFITS

The MAX-SAFE Maximum Safety Anti-Rollaway Brake™ solution

- Maximum safety for all people and property
- Active, automatic system - no driver intervention, no complicated processes
- Inbuilt algorithms for constant self-analysis for faults
- Mitigates human error (when forgetting to apply park brake)
- Ideal for fast-moving/emergency services
- Prevents runaway vehicles including on steep hills
- Out of the box customised solution with ready to go plugs for each vehicle type - no splicing of wires, full confidence in the integrity of the system
- Same solution works on all vehicle types
- Inbuilt-park brake alarm - meets site safety requirements
- Back-up service - experienced NZ-based dealer for installation and service
- Confidence in the solution, peace of mind knowing people are safer
- Add-on reversing radar technology can be installed with the braking system at a later date (allowing for initial financial constraints, new regulations, etc.)

LOW-CARBON BUILDING SOLUTIONS



Sustainability and Innovation

Holcim is the leading partner for sustainable construction, creating value across the built environment.

We are helping our customers build better with less, thanks to our broad range of innovative, low-carbon, and circular solutions including ECOPlanet® low-carbon cement and ENVIROCore cement replacements.



Todd Matchett
Bridgeman Concrete -
Area Manager/
Assistant Technical
Manager

For Bridgeman Concrete, the Puketapu Bridge project provided valuable performance data and practical insights into high GGBFS replacement levels, thermal control and digital quality control.

BRIDGEMAN CONCRETE DELIVERS HIGH-PERFORMANCE PILING MIX FOR PUKETAPU BRIDGE REBUILD



In the aftermath of Cyclone Gabrielle, Bridgeman Concrete played a pivotal role in the Puketapu Bridge rebuild, supplying a high-specification tremie piling mix for six large diameter bored piles - each exceeding 100 m³ - where precision, consistency and robust quality assurance were critical from mix design through to placement.

REBUILDING A CRITICAL REGIONAL LINK

When Cyclone Gabrielle tore through Hawke's Bay in February 2023, the damage to transport infrastructure was immediate and severe. Among the structures lost was the 121-metre-long Puketapu Bridge, which crossed the Tutaekuri River and connected Puketapu Road with Dartmoor Road - an essential route for farming communities across Patoka, Puketitiri, Puketapu and Rissington.

Swept away by floodwaters and debris on 14 February, the original single-lane bridge had reached the limits of its resilience. Its replacement

would need to be stronger, more durable, and better equipped to withstand future extreme weather events.

The new Puketapu Bridge has been constructed on the same alignment but to a significantly enhanced design. It features two traffic lanes, a higher load rating, improved seismic resilience, and - critically - fewer piers within the riverbed. Reducing in-stream obstructions lowers the risk of debris accumulation during flooding, improving both safety and long-term durability.

A TECHNICALLY DEMANDING PILING SOLUTION

Central to the bridge's foundations are six large diameter bored piles, each requiring more than 100 m³ of concrete placed to significant depth of 40 metres in challenging ground and groundwater conditions. Bridgeman Concrete was engaged to supply the specialised piling concrete, working closely with piling contractor Spiral Drillers and lead construction company Fulton Hogan.

The project specification was prepared by engineering consultants WSP.

For Bridgeman Concrete, the project represented a high-specification application that demanded close coordination, rigorous quality control and reliable performance from batching through to placement. Strength, flowability, temperature control and logistics all had to work together, with no margin for error.





DESIGNING TO A TIGHT SPECIFICATION

The piling concrete was required to achieve a 28-day compressive strength of 40 MPa, with a maximum water-cement ratio of 0.45, strict alkali and chloride limits, and a target spread of 550 mm \pm 50 mm. The concrete also needed to be suitable for tremie placement - pumped through steel pipework and placed from the base of the pile, displacing groundwater as it rose.

Thermal performance was a key consideration. With large volumes of concrete placed below ground, internal temperatures generated during cement hydration needed to remain below 70°C to minimise thermal cracking and durability risks.

Starting from a proven piling mix, Bridgeman Concrete refined the design to suit local Hawke's Bay river aggregates and the project's requirements. Adjustments included increasing total cementitious content, refining aggregate grading, and incorporating a high-performance superplasticiser to achieve the required spread without increasing water content. The final water cement ratio was reduced to approximately 0.395.

To manage heat of hydration, ground granulated blast furnace slag (GGBFS) was introduced as a partial cement replacement. Initially trialled at 35 per cent, the GGBFS content was increased to 50 per cent following successful strength testing and thermal modelling. In addition to temperature

control, this delivered a sustainability benefit, reducing the embodied carbon of the piling mix by more than 55 per cent compared with a cement only mix.

TRIALLING AND VALIDATION

Comprehensive trial work was undertaken prior to construction. A 1 m³ insulated mould fitted with temperature probes simulated mass concrete conditions, while spread testing every 30 minutes over two and a half hours confirmed workability retention. Compressive strength testing demonstrated that the mix exceeded the 40 MPa requirement well ahead of 28 days.

Thermal results from the insulated trial approached the specified maximum, prompting the decision to increase GGBFS content to provide additional assurance. Given the conservative nature of the trial environment, it was anticipated that in-situ pile temperatures would be lower due to groundwater influence - a prediction later confirmed on site.

PLANNING FOR DELIVERY

Ahead of the first pour, Bridgeman Concrete held a detailed pre-pour meeting with Spiral Drillers and Fulton Hogan to confirm health and safety requirements, truck access and movements, testing locations, supply rates, and procedures for managing any out-of-tolerance results.



Main Image: As Hawke's Bay rebuilds after Cyclone Gabrielle, the new Puketapu Bridge shows how technical excellence and collaboration deliver resilient infrastructure. Insert: Bridgeman Concrete used the VERIFI system, recalibrated for spread, to improve consistency.

With a required supply rate of around 50 m³ per hour and a maximum concrete age of 90 minutes from batching to discharge, careful logistics planning was essential. The site is approximately 19 km from Bridgeman Concrete's Hastings plant, and every load required spread testing prior to placement. Nine trucks were scheduled to maintain continuous supply without congestion or delays.

MEETING THE CHALLENGE

The first pile pour took place on 17 September 2024. More than 100 m³ of concrete disappeared into the ground as the tremie pipe displaced groundwater and the mix flowed smoothly around dense reinforcing cages. All loads were spread tested on site, typically achieving results within a narrower preferred range of 550-600 mm.

To improve consistency, Bridgeman Concrete utilised the VERIFI slump management system across its delivery fleet. While traditionally used to measure slump, VERIFI was recalibrated to correlate with spread measurements. By integrating VERIFI data with physical test results, spread variation was reduced to within ±30 mm on later pours.

Across the six piles (six pours), more than 600 m³ of concrete was supplied. A high level of consistency was achieved reflecting the effectiveness of the mix design, batching controls and real-time monitoring systems in place.

Temperature probes installed within the piles recorded peak internal temperatures of approximately 34-40°C - well below the specified maximum - while still achieving strong early-age strength.

Compressive strength testing across thirteen sample sets showed seven-day strengths averaging around 33 MPa and 28-day strengths averaging approximately 51 MPa, despite the high level of cement replacement. Design strength was achieved in as little as 16 days, allowing construction to proceed without delay.

STRONG PERFORMANCE AND PRACTICAL LEARNINGS

For Bridgeman Concrete, the Puketapu Bridge project delivered valuable performance data and practical insights, particularly around high GGBFS replacement levels, thermal control and digital quality-control tools.

The use of a 50 per cent GGBFS mix provided strong temperature control, extended workability and reliable strength development, supporting confidence in applying low-carbon concrete solutions on future infrastructure projects.

As Hawke's Bay continues to rebuild following Cyclone Gabrielle, the new Puketapu Bridge demonstrates how technical excellence, careful planning and close collaboration can deliver resilient infrastructure fit for the challenges ahead.



Sustainability. Proven.

Creating sustainable spaces?

Our **Bayferrox® Black Oxide** carries an **Environmental Product Declaration**, giving you with the internationally recognised data you need to achieve sustainable certifications for your project.

Our Black Oxide carries **Declare** certification too, for its socially and environmentally responsible production.



Declare.

Allied
Concrete





DESIGNING OUT RISK: ALLIED CONCRETE'S MOVE TO LADDERLESS TRUCKS

Health and safety is a core value across New Zealand's readymix sector, and Allied Concrete has taken a proactive step by redesigning one of the most routine - and risky - aspects of concrete delivery.

Throughout 2025, Allied Concrete has committed to progressively convert its nationwide fleet to ladderless concrete trucks, removing one of the highest-risk activities faced by drivers.

A DESIGN-LED APPROACH

Falls from height remain a leading cause of serious harm across construction and transport. Traditionally, drivers climbed truck-mounted ladders to inspect hoppers, carry out washdowns or complete maintenance tasks. Despite strong procedures and training, working at height remained inherently risky.

Rather than relying solely on procedural controls, Allied Concrete chose to design the hazard out entirely.

PRACTICAL IMPROVEMENTS

Ladders have been removed and replaced with low, two-step platforms and ground-level access points, allowing drivers to safely complete

inspections and cleaning tasks without climbing or balancing at height. The initiative is being rolled out, with full adoption planned over the coming years.

BENEFITS & LEADERSHIP

The benefits are clear. Eliminating ladders removes a key source of potential incidents, reduces physical strain and improves driver wellbeing. Ground-level access also supports faster, safer washdowns and inspections, improving operational efficiency without compromising quality.

The approach aligns with established practice in Australia, where ladderless fleets are already standard. By adopting similar design principles, Allied Concrete is lifting safety expectations locally.

The ladderless initiative demonstrates how thoughtful, design-led decisions can deliver meaningful safety improvements, reinforcing Allied Concrete's commitment to ensuring every driver returns home safe at the end of the day.



MANAGING RISK AT SCALE: NZIC'S HEALTH & SAFETY JOURNEY IN BREAK-BULK CEMENT IMPORTS

Since importing its first break-bulk cement shipment in September 2023, New Zealand Independent Cement (NZIC) has undertaken a significant health & safety journey, embedding robust systems and strong partnerships into one of the most complex and high-risk logistics operations in the construction materials supply chain.

Each handysize vessel chartered by NZIC calls at two New Zealand ports and involves the discharge of approximately 20,000 bulk bags, each weighing around 1.5 tonnes. Conducted over an eight-day, 24-hour operation, this equates to more than 1,100 ship crane lifts and around 830 truck movements. The operation is highly people-intensive, involving more than 25 service providers, including ports, stevedores, truck operators, temporary staff and NZIC personnel.

BUILDING STRONG SYSTEMS & PARTNERSHIPS

Recognising these risks, NZIC has focused on clearly identifying critical hazards, developing detailed Safe Work Method Statements (SWMS), and ensuring consistent communication across all PCBU interfaces. Strong relationships with service providers have been central to establishing a shared safety culture, supported by extensive planning meetings, site visits and knowledge sharing.

Pre-ship meetings are conducted with all PCBU partners, alongside pre-ship assessments with

temporary staff and stevedores, ensuring a clear understanding of tasks, controls and expectations before operations commence.

CONTINUOUS IMPROVEMENT & INNOVATION

NZIC has actively sought external scrutiny to lift performance. Maritime New Zealand was invited to audit a vessel discharge, resulting in practical improvements such as modifications to spreader bars to improve hatchman safety and refinements to port traffic management layouts.

Technology also plays an important role. QR code inductions are used across sites, while AI is used to translate standard operating procedures into multiple languages, supporting temporary staff whose first language is not English. Traffic management plans are communicated both electronically and in hard copy to truck drivers.

OUTCOMES & INDUSTRY LEADERSHIP

With 24-hour operations, additional controls such as enhanced forklift lighting and mobile lighting around storage sheds help manage fatigue and visibility risks. Electronic safety tour templates aligned with the Approved Code of Practice verify agreed controls, with post-discharge reviews conducted after every vessel.

NZIC's journey demonstrates what can be achieved through collaboration, planning and continuous improvement, setting a strong benchmark for safe break-bulk cement operations in New Zealand.

NZIC

NEW ZEALAND INDEPENDENT CEMENT



HIGGINS[®] CONCRETE





EMBEDDING SAFETY IN EVERY ACTION: HIGGINS CONCRETE'S ZERO HARM ACHIEVEMENT

At Higgins Concrete, health, safety and wellbeing are deeply rooted values rather than operational priorities. Guided by its *"Start Safe, Stay Safe, Home Safe"* vision, the company achieved zero Lost Time Injuries (LTI) for a continuous 12-month period to early 2025.

In a sector characterised by heavy machinery and high-risk environments, this milestone highlights the impact of a genuinely embedded safety culture.

CLEAR EXPECTATIONS & ACCOUNTABILITY

Since the introduction of the *Health & Safety at Work Act* in 2016, Higgins Concrete has embraced shared accountability across the business. Safety is owned by everyone, from senior leaders to frontline teams.

Central to this approach are the company's *Golden Rules*, which define clear, non-negotiable behaviours such as never working while impaired, maintaining exclusion zones and following lockout procedures. These rules are reinforced daily and guide decision-making on site.

SUPPORTING WELLBEING

Higgins Concrete's approach extends beyond physical safety to mental wellbeing. The business has partnered with Groov and appointed trained Groov Ambassadors across the organisation, including leaders, operational staff and drivers.

Using Groov's *Six Pillars of Wellbeing*, ambassadors support initiatives focused on resilience, connection and performance care.

This proactive focus has helped create a more supportive and engaged workplace where people feel confident to speak up and look after one another.

CONTINUOUS IMPROVEMENT & RESULTS

Zero Harm has been underpinned by strong systems of continuous improvement. Incidents, near misses and safety breaches are reviewed to identify root causes and implement corrective actions. Monthly safety reporting, quarterly cross-site manager audits and targeted campaigns on critical risks keep controls effective and visible.

From February 2024 to February 2025, Higgins Concrete recorded zero lost time injuries. While proud, the company remains focused on improvement, reinforcing the message that Zero Harm is achievable when safety is embedded in every action.

NZIC

NEW ZEALAND INDEPENDENT CEMENT

WHEN THE JOB MATTERS, SUPPLY MATTERS

New Zealand Independent Cement supports projects across Aotearoa with high-quality cement products, reliable logistics, and local industry knowledge. Backed by established infrastructure and a modern delivery fleet, we focus on consistency, performance, and getting cement to site when it's needed.

Designed for New Zealand conditions and supported by people who understand the realities of the job, NZIC delivers practical, proven solutions for the construction industry.

NO HYPE. JUST CEMENT THAT PERFORMS.



Talk to NZIC about your next project.
www.nzindependentcement.co.nz