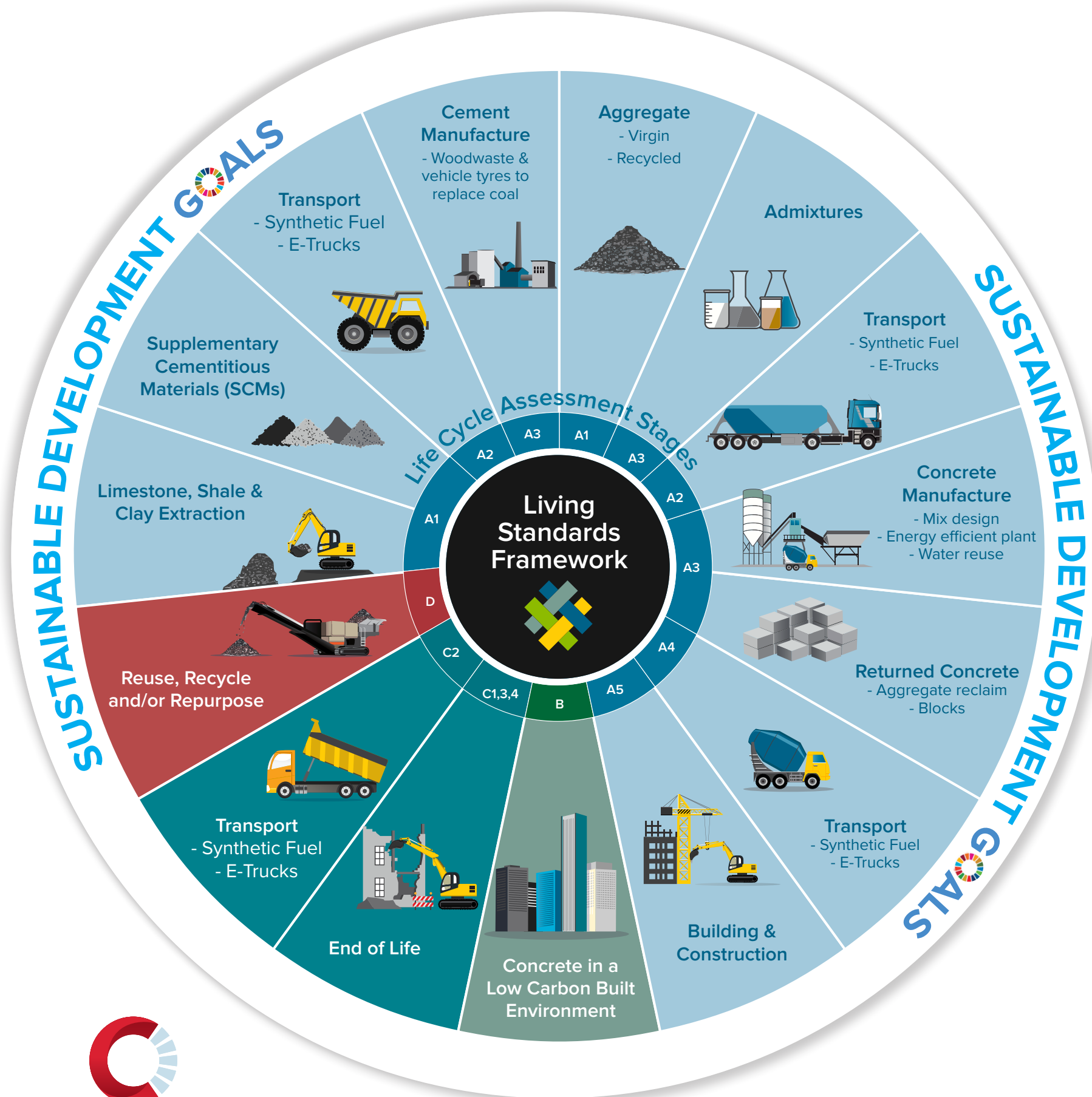
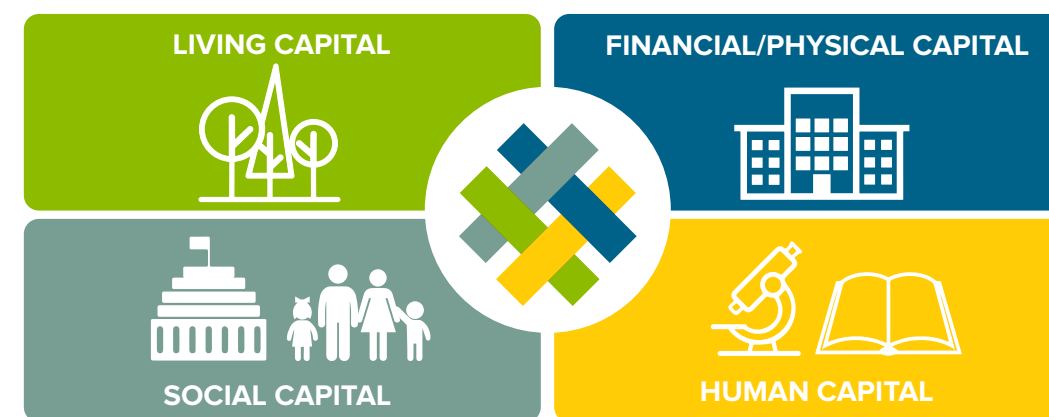


The Life Cycle of Concrete



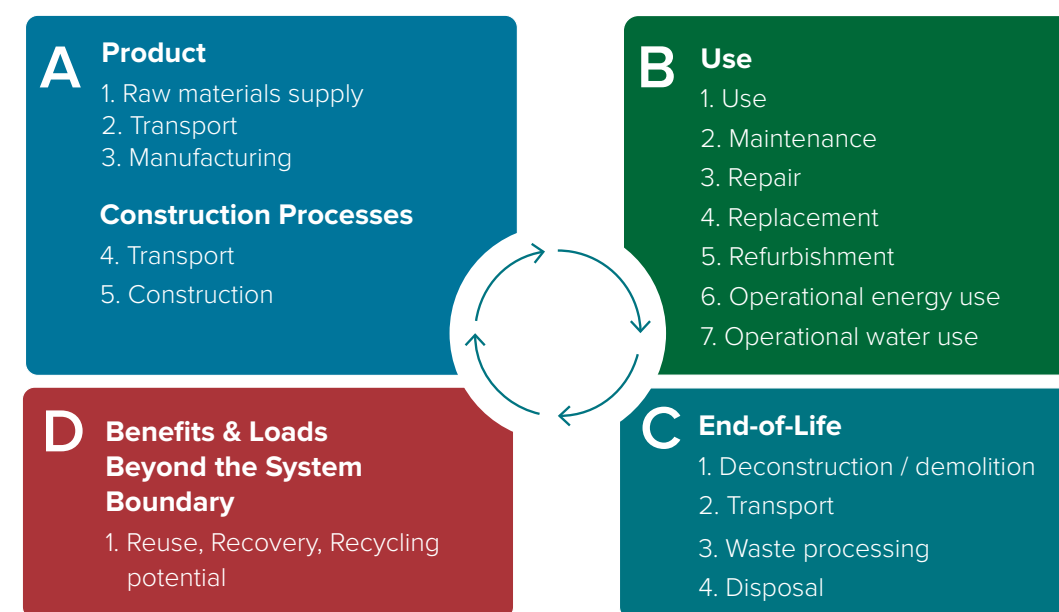
LIVING STANDARDS FRAMEWORK (LSF)

The concrete industry's contribution to the Living Standards Framework (LSF) is significant. Within the Framework, intergenerational wellbeing relies on the growth, distribution, and sustainability of the Four Capitals in New Zealand.



LIFE CYCLE ASSESSMENT (LCA) STAGES

Life Cycle Assessments (LCA) measures the environmental impact of every step in the building process, from cradle to grave. An LCA of concrete would demonstrate reduced emissions from cement, as well as concrete's long-life and recyclability.



SUSTAINABLE DEVELOPMENT GOALS (SDGs)

The United Nations' 17 interconnected Sustainable Development Goals (SDGs) are the blueprint to achieve a more sustainable future. Concrete is key to addressing global challenges, including climate change and environmental degradation.

