

The Bulletin

Volume XLIX | Number 5

SEPTEMBER 2012

THE ASC BULLETIN® IS PUBLISHED BY THE AMERICAN SOCIETY OF CYTOPATHOLOGY

CELEBRATING OUR DIAMOND ANNIVERSARY



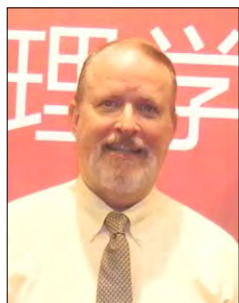
AMERICAN SOCIETY OF Cytopathology 

60th
ANNUAL SCIENTIFIC MEETING

LAS VEGAS

NOVEMBER 2-6, 2012 ♦ BALLY'S LAS VEGAS

60 th Anniversary Commemoration... When did it Begin?	104
Geraldine Colby Zeiler Awards for Students of Cytotechnology	110
Coming soon...The Journal of the ASC	111
60 th Annual Scientific Meeting Schedule at a Glance	113
60 th Annual Scientific Meeting Features	113-117
Case Study	118
In Memoriam	119
Support the ASC Legacy Fund	121
Foundation President's Column	122
Celebrate Your Mentoring Experience!	123
PEC Update	125
Cyto-econferences for October and November 2012	126
Book Review	128
Newly-elected Members	129





**R. Marshall Austin,
MD, PhD**

Most members have probably seen advertisements for our “60th Anniversary Meeting” on the ASC Web site and through other announcements. Most members, however, probably have limited if any knowledge of specific events, which took place many years ago, that laid the groundwork for our Society. The organization that was created 60 years ago actually had an entirely different name, the Inter-Society Cytology Council (ISCC).

In September 1952, the constitution and bylaws of this new organization were formally passed and became the Constitution of the ISCC. It was not until the Ninth Annual Meeting held in Memphis, Tennessee in 1961, that the name American Society of Cytology (ASC) was adopted by unanimous vote of the membership. The current modified name, American Society of Cytopathology, was voted on during the 42nd Annual Scientific Meeting held in Chicago, Illinois in 1994. At this year’s Annual Scientific Meeting, we will discuss the key individuals, organizations, and events surrounding the formation of our Society.

As a “sneak preview,” let us examine briefly the highlights of the organization’s first annual educational meeting, held on November 19 and 20, 1953, in the Bellevue-Stratford Hotel



- 104 ASC 60th Anniversary Commemoration...When did it Begin?**
Dr. R. Marshall Austin provides a “sneak preview” of a 60th Annual Scientific Meeting presentation about the formation of the Society
- 106 INTERVIEW with Barbara Crothers, DO** 
Dr. Crothers relates rewarding aspects of her career
- 108 ASC 60th Annual Scientific Meeting Hotel Information**
- 109 ASC 60th Anniversary Celebration**
Details of what’s to come during the ASC Annual Scientific Meeting in Las Vegas
- 109 INTERVIEW with Lynnette Savaloja, SCT(ASCP)** 
What she likes best about being a cytotechnologist and what she values the most about her ASC membership
- 110 Geraldine Colby Zeiler Awards for Students of Cytotechnology**
The five recipients for the 2012 Awards
- 111 Coming soon.....The Journal of the American Society of Cytopathology (JASC)**
Dr. Syed Ali, Editor-in-Chief of JASC, updates ASC Members on the new ASC Journal
- 112 INTERVIEW with Ann T. Moriarty, MD** 
How she first found out about cytology and her most rewarding moment as a cytopathologist
- 113 ASC 60th Annual Scientific Meeting Schedule at a Glance**
- 113 New Frontiers Lecture**
Details of Dr. George D. Lundberg’s presentation during the 60th Annual Scientific Meeting
- 114 60th Annual Scientific Meeting Networking Events**
- 115 Highlights for Cytology Educators on the Web and at the Las Vegas Meeting!**
Dr. Marilee Means provides a Q&A format for cytology educators
- 117 HOT TOPIC: ASC Workload Recommendations for Automated Pap Test Screening: What’s Next?**
Moderated by William N. Crabtree, PhD, SCT(ASCP) and Tarik M. Elsheikh, MD
- 117 ASC Foundation 5K Run/Walk – Get Active and Involved!** 
- 118 Case Study**
Paratracheal Mass Mimicking Malignancy
- 119 In Memoriam**
Arline Kaye Howdon, CT(ASCP), Irena Grasberg Koprowska, MD and Leopold G. Koss, MD
- 120 President’s Blog**
Dr. Lydia Howell shares a personal connection to Dr. Irena Koprowska
- 121 ASC Legacy Fund**
Donate to the Leopold Koss Lectureship, in memory of Dr. Koss
- 122 ASC President’s Column: What Will You Leave Behind?**
- 122 INTERVIEW with Michael S. Facik, CT(ASCP)CFIAC** 
Poignant thoughts about his career in cytology and with the ASC
- 123 Celebrate Your Mentoring Experience!**
Diamonds in the Rough and Make a Star of Your Mentor
- 125 PEC Update**
For Cytopathology Fellows, Pathology Residents and Senior Residents
- 125 Cancer Cytopathology is Moving to Monthly in 2013**
- 126 2012 Cyto-econference Webinars for October and November**
- 127 Self-Assessment Modules (SAMs)**
The ASC is your place for CME and SAM activities to help satisfy MOC requirements
- 128 Book Review**
Atlas of Radiologic-Cytopathologic Correlations
- 129 Newly-elected Members**

continued from page 104

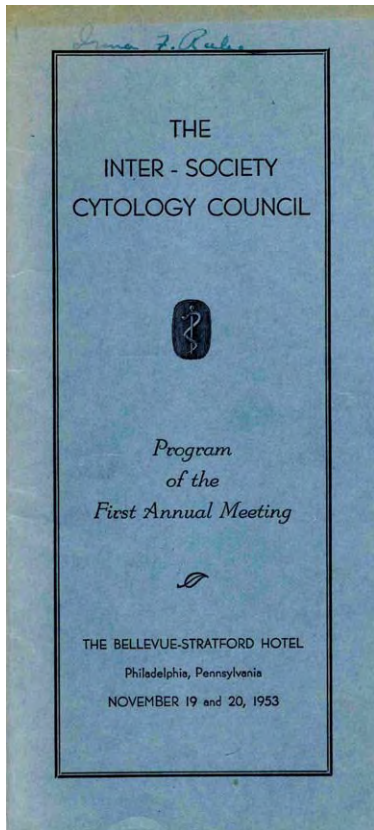


Figure 1

in Philadelphia, Pennsylvania. All of these highlights are taken directly from a brochure of that Meeting kindly provided by Dr. Barbara Benstein from the archives of her School of Cytotechnology at the University of Tennessee (**Figure 1**). The handwritten name on the top of the old brochure is that of Irma F. Rube, then with the Cancer Investigation Unit, US Public Health Service in Memphis, Tennessee.

The brochure opens by noting that the ISCC “was organized for the purpose of fostering the cytological method so that the maximum potential of usefulness as a study tool and as a clinical diagnostic technique may be achieved in the least possible time.” The brochure goes on to state: “To encourage a high degree of scientific, academic and clinical interest and at the same time render maximum service in making the cytological method universally available, the active participation of cytologists, pathologists and clinicians in the organization and function of the Council is essential. No cytologist, pathologist or clinician can utilize the method without the other two. It will require the complete and unselfish help and co-operation of all three to assure the success of the new cytological organization. Therefore, the active membership of the Council is open to clinicians, pathologists, and cytologists engaged or interested in an efficient utilization of the cytological method.”

The first organization unit of the Council was the Founders Executive Committee, which was established on November 15, 1961. This Committee “was responsible for the formation, administration, and direction of the Council until the election of Officers and Executive Committee during the Inaugural (administrative) Meeting at Sloan-Kettering Institute, New York, February 14, 1953. It is recognized as the originating body of the ISCC, but its authority and administrative responsibility (will be) terminated with the election of the first Executive Committee.”

The members of the Founders Executive Committee are listed as follows: Chairman: Joe Vincent Meigs, MD, Boston, MA; Vice Chairmen: George N. Papanicolaou, MD, New York, NY (Cytology Representative); Frank W. Hartman, MD, Detroit, MI (Pathology Representative); F. Bayard Carter, MD, Durham, NC (Clinical Representative); Secretary-Treasurer: Paul F. Fletcher, MD, St. Louis, MO; Members: Arthur Purdy Stout, MD, New York, NY; Lewis C. Scheffey, MD, Philadelphia, PA; Emerson Day, MD, New York NY; Charles S. Cameron, MD, New York, NY; and Raymond F. Kaiser, MD, Bethesda, MD.

Membership requirements are described as follows: “Everyone interested in cytology or engaged in some phase of cytologic activity is invited to apply for membership in the ISCC, regardless of the extent to which his actual cytologic knowledge and training may be limited. The Council is a





INTERVIEWS

Barbara Crothers, DO

Dr. Crothers relates the most rewarding aspect in her cytology career, what she likes best about being a cytopathologist and what she values most about her membership during this 60th anniversary year.



continued from page 106

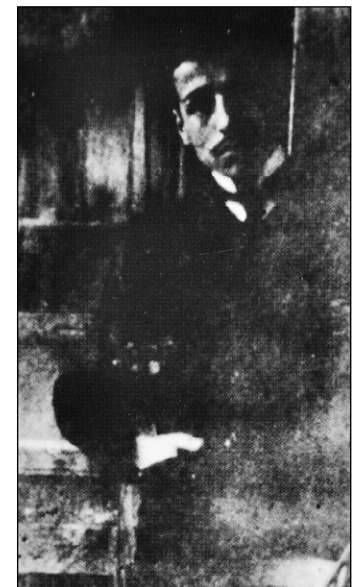
The Council is a nonprofit organization. Officers and committee members donate their services. Funds have been provided by the American Cancer Society to help defray expenses involved in the organization and establishment of the Council.

nonprofit organization. Officers and committee members donate their services. Funds have been provided by the American Cancer Society to help defray expenses involved in the organization and establishment of the Council. It will, eventually, support itself with income received from initiation fees and annual dues. Until that time arrives, it is hoped that part of the current expenses will be defrayed by contributions from organizations interested in the present and future development of cytology.”

The opening address of the meeting was not surprisingly by Dr. George Papanicolaou himself, titled “Significance and Value of Certain Patterns of Exfoliated and Endometrial Cells.” Forty-two platform presentations were further listed in the program. The titles and presenters are a reflection of the early history of our field. Platform presentations by future ASC Presidents included talks by:

- Tennessee’s Cyrus Erickson, MD (ASC President 1960-1961): “Preliminary Report of 40,000 Women Studied by Vaginal Smear Technique during the First Year of a General Population Uterine Cervix Cancer Screening Project;”
- New York’s Leopold Koss, MD (ASC President 1962) with Grace Durfee: “Cytological Changes Preceding the Appearance of In Situ Carcinoma of the Cervix;”
- Ohio’s Emmerich von Haam, MD (ASC President 1962-1963): “Some Observations in the Field of Exfoliative Cytology;”
- Cleveland’s James W. Reagan, MD (ASC President 1963-1964): “Carcinoma In Situ: A Correlation of Cytological and Histological Changes;”
- Boston’s Robert H. Fennell, MD (ASC President 1969-1970) with Ruth Graham: “Correlation of Cytology and Histology in Atypical Epithelium of the Cervix;”
- And several additional talks by Dr. Papanicolaou (ASC President 1956-1957): “Diagnostic Value of Endometrial Smears” and “Observations on the Cytology of Breast Secretion.”

The first official slate of officers shown in the program consists of the members of the Founder’s Executive Committee with one addition. The legendary Mrs. Ruth Graham of Vincent Memorial



Dr. Marshall Austin is in front of a painting of Dr. George Papanicolaou at age 21 (left), when he graduated from the University of Athens School of Medicine. The painting by Dr. Papanicolaou’s niece, Olga Stamatiou was based on an old photograph (right).

continued from page 107

At this year's Annual Scientific Meeting, we will explore in more detail the influential national organizations, medical specialties, and individuals who came together in the years before the first meeting to organize the ISCC.

Hospital, Boston, author of the first textbook of cytology in 1950 ("The Cytologic Diagnosis of Cancer") was added as "Assistant Secretary." Standing Committees formed and staffed included: Committee on Standards and Qualifications, Cytologic-Technology Committee, Qualification Questionnaire Committee, Committee on Arrangements for Annual Meetings, Nominating Committee, Constitution and By-Laws Committee, Editorial and Publications Committee, and Membership Committee.

The Society and its educational program had been launched. At this year's Annual Scientific Meeting, we will explore in more detail the influential national organizations, medical specialties, and individuals who came together in the years before the first meeting to organize the ISCC. The new cytologic method and the ASC were at the center of a new nationwide initiative with powerful sponsors: "Every Doctor's Office a Cancer Detection Center."

*Join Dr. Austin and other Past Presidents for the **Panel Luncheon Seminar with the Presidents on Monday, November 5th** for this 60th Anniversary Commemorative session about "The Personal Letters and Life of Dr. George Papanicolaou," to include pictures and stories of Dr. Papanicolaou and other founding fathers. This session will leave you proud to be in the field of Cytology and completely appreciative of those before us who paved the way. **1.75 CME/CMLE and SAM credits offered.***



COME JOIN US!

Experience the **fun, sun** and **excitement** only Las Vegas can deliver.



RESERVE TODAY!

Bally's Las Vegas
3645 Las Vegas Boulevard South
Las Vegas, NV 89109
702.967.4111 Main
(Online Reservations preferred)

For nearly 30 years, Bally's has been the pulsating soul of a neon city that refuses to sleep. With its unwavering service, comprehensive dining and signature style, this jewel of the Strip is second to none. See for yourself why Bally's embodies the spirit of Las Vegas. Guests at Bally's enjoy No Resort Fees and free Self-Parking. Specially Discounted Guest Room Rates at Bally's for ASC Attendees:

New Rates!

Single/Double: Friday/Saturday Nights \$159.00

Midweek \$109 • Extra Person charge: \$30.00

(plus applicable fees and taxes per room, per night)

Please make your reservations directly with Bally's Las Vegas by October 1, 2012. Guest rooms have been reserved at a negotiated rate and are available on a first-come, first-served basis. Reservations after the October 1st cut-off date are accepted based on a room and rate availability.

Why stay at the hotel contracted with the ASC? Read the FAQs here!

Daily Prizes awarded for Bally's registered guests!



The American Society of Cytopathology is celebrating its 60th Anniversary at the Annual Scientific Meeting.

In recognition of our 60th Anniversary, special poster and video presentations will be on display, chronicling the history, events and memorable milestones that helped shape ASC's foundation as a leading Society dedicated to the science of cytopathology.

Decade by decade, you'll take a journey through time, reliving the significant technology, pioneers and memorabilia that will forever be a part of the ASC. In addition to a reflection on the past 60 years, we will take a look forward, with a special poster dedicated to the Future of Cytopathology.

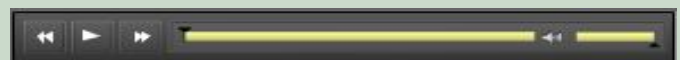
Visit the display at the 60th Annual Scientific Meeting. Experience the history and look toward the future!



INTERVIEWS

Lynnette Savaloja, SCT(ASCP)

What does Lynnette like best about being a cytotechnologist and what does she value the most about her ASC Membership?





The cobas[®] 4800 System now with HPV and CT/NG testing

Clinically proven performance powered by innovative test design delivering accurate results efficiently.

Stop by booth #309 while at ASC and see the cobas[®] 4800 system



COBAS and LIFE NEEDS ANSWERS are trademarks of Roche.
©2012 Roche Diagnostics. All rights reserved. 472-51832-0912



Geraldine Colby Zeiler Awards for Students of Cytotechnology

Prabodh Gupta, MD, Chair
ASC Awards Committee

The College of American Pathologists Foundation, in collaboration with the American Society of Cytopathology Awards Committee, is pleased to announce the recipients of the Geraldine Colby Zeiler Awards for Students of Cytotechnology for 2012.

Amanda E. Bruening

*The University Health Center of Pittsburgh
Anisa I. Kanbour School of Cytotechnology
Pittsburgh, Pennsylvania*

David K. Kress

*University of Kansas
Cytotechnology Program
Kansas City, Kansas*

SSG Karin Sommers

*Medical Education Training Campus (METC)
Cytotechnology Program
Fort Sam Houston, Texas*

Fiona Miecha Fennel

*Albany College of Pharmacy and Health Sciences
Cytotechnology Program
Albany, New York*

Anna Novak

*Mayo Clinic, School of Health Sciences
Cytotechnology Program
Rochester, Minnesota*

These awards of \$1,000 each were established in memory of Geraldine Colby Zeiler, a cytotechnologist who trained at the Mayo Clinic, and are made possible through the generosity of Dr. William B. Zeiler and family and friends of the late Mrs. Zeiler. Congratulations to these outstanding students who recently completed their training in cytotechnology!



Syed Ali, MD

Coming soon.....*The Journal of the American Society of Cytopathology (JASC)**

Syed Ali, MD, Editor-in-Chief

The Johns Hopkins Hospital, Baltimore, Maryland

The *Journal of the American Society of Cytopathology (JASC)* is about a year away from publishing its first issue. Excitement is already building as intense work is being done in the background to make it a successful launch, worthy of the name that it will come to symbolize as the “Official Journal,” carrying the vision, mission and values of the ASC forward for many years to come.

Soon after the 2012 ASC Annual Scientific Meeting in Baltimore, preparations for crafting a final contract started. The formal contract was eventually signed in late winter by the Society and *JASC*'s publisher, Elsevier. This initial phase in *JASC*'s creation was a daunting task and took a lot of time, effort and careful deliberation on the part of many individuals in the Society as well as in Elsevier. After the initial formalities were over, I was given the task of establishing an editorial board followed by an editorial office. After much exploration and careful thinking, I was able to approach three individuals who were at the top on my short list of potential “Associate Editors.” To my luck, they all generously accepted to serve at this position. It gives me a great pleasure to announce here that Drs. Dina Mody (The Methodist Hospital, Houston), Paul Wakely (Ohio State University Medical Center, Columbus) and Eva Wojcik (Loyola University Medical Center, Chicago) are the three associate editors of the *JASC*. I could not have asked for better-qualified individuals. They are outstanding and truly accomplished cytopathologists, each with a long service record to the Society. They have diverse research and clinical interests and represent the highest standard in academic medicine in the field of cytopathology.

Preparations are underway now to finalize an editorial office of the *JASC* as well as recruitment of a qualified individual to serve as the managing editor. We are soon to finalize a list of qualified ASC members to serve on the “editorial board” of the Journal as well as editors of its various sections. The proposed outline of *JASC*, its various sections and subsections as well as other pertinent details, are currently being reviewed. We will have the mission statement of the ASC as our guiding light and will promote the highest quality publications, which will focus on original research, innovations in continuing medical education, public education, professional practice issues, and standards and ethics in all allied pathology fields in general and in cytopathology in particular. *JASC* will strive to ensure and promote the Society's values: “Enhancing mutually respectful inter-professional partnerships among pathologists, cytotechnologists, clinicians, and other members of the healthcare team, as well as promoting inter-society partnerships.”

The Journal is slowly taking its final shape and style and soon, after the first face-to-face meeting of the editors during the Las Vegas Annual Scientific Meeting, a more detailed and comprehensive plan will be delineated for the forthcoming issues in 2014.

Elsevier has been very generous and helpful when approached by the Society in late spring with the idea of having a supplemental or “pre-issue” to the *JASC*, which would include all abstracts to be presented at the ASC 60th Annual Scientific Meeting in Las Vegas, Nevada. By holding the supplement in your hands, you can judge for yourself Elsevier's excellent quality, which will always be upheld in the forthcoming issues of the *JASC*.

The road leading to creating the Journal has not been easy. The path was totally new, long and winding. We overcame a lot of hurdles on the way with patience and understanding. The final destination is now in sight, and it happened due to the wisdom and foresight of a number of outstanding individuals who lent me their unstinting support and guidance throughout this process. Just to name

It gives me a great pleasure to announce here that Drs. Dina Mody (The Methodist Hospital, Houston), Paul Wakely (Ohio State University Medical Center, Columbus) and Eva Wojcik (Loyola University Medical Center, Chicago) are the three associate editors of the *JASC*.

*Supplement Preface, *Journal of the American Society of Cytopathology*, Volume 1, Issue 1S, November 2012

continued from page 111

a few, *JASC* will be forever grateful to Dr. Nancy Young (the then serving ASC President) for taking the bold decision at the Executive Board meeting last year and endorsing it as the new and “official” journal of the Society by taking a firm and principled stand. Dr. Lydia Howell (current ASC President) put her heart and soul into making sure that the whole concept of *JASC* becomes a reality and managed so tactfully to overcome innumerable unforeseen issues that we had faced with starting the new journal. I will not do justice if I don’t mention Beth Jenkins (Executive Director of ASC) and Andrew Berin (Publication Director, STM journals, Elsevier) without whose help the whole creation process for *JASC* would have fallen apart.

I urge you to get involved with the Journal. It is your Journal and will certainly reflect the pride and loyalty that we all feel for our Society. I invite you to email me your suggestions and advice as we proceed with finalizing the contents and style of the *JASC*. We can certainly use all the help that the members could provide. As a first engagement step, we will invite our membership to vote online to select the best title page for the *JASC*, which will forever symbolize the excellence and innovation in the field of Cytopathology that has been the mission of the ASC.

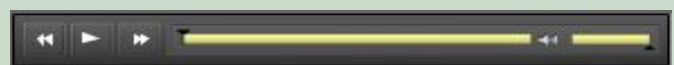
In the end, I can assure you that scores of individuals are working diligently to give you the highly anticipated and “historical” first issue of *JASC* in January 2014. More details regarding the manuscript submission process for the authors, detailed outline of the journal contents and other pertinent details are forthcoming soon after our 60th Annual Scientific Meeting. *JASC* will be a “tour de force” in the Cytopathology world, the standard bearer of the ASC’s vision to “define and promote excellence in cytopathology striving for the highest quality of patient care.”



INTERVIEWS

Ann T. Moriarty, MD

Sharing how she first found out about cytology, Dr. Moriarty talks about what she likes best about being a cytopathologist and the most rewarding moment that has happened to her.



Schedule at a Glance

Thursday, November 1

4:00 pm - 7:00 pm **Registration Open***

Friday, November 2

7:00 am - 7:00 pm **Registration Open***
 8:00 am - 10:00 am **Strategies in Cytology Education Session 1 - 2**
 8:00 am - 12:00 pm **Challenges in Diagnostic Cytomorphology I**
 10:30 am - 12:30 pm **Strategies in Cytology Education Session 3 - 4**
 1:15 pm - 4:00 pm **Challenges in Diagnostic Cytomorphology II**
 2:00 pm - 3:30 pm **Video Microscopy Tutorials 1 - 3**
 4:30 pm - 6:00 pm **Video Microscopy Tutorials 4 - 6**
 6:00 pm - 8:30 pm **New! Hot Topic: ASC Workload Recommendations**
 7:00 pm - 8:30 pm **Video Microscopy Tutorials 7 - 9**

Saturday, November 3

6:00 am **ASC Foundation 5K Run/Walk Check-in**
 7:00 am - 6:00 pm **Registration Open***
 7:30 am - 9:00 am **Presidents' Rounds 1 - 3**
 8:00 am - 8:30 am **Gathering for First-Time Attendees**
 8:30 am - 9:30 am **ASC Cytotechnologist Business Meeting**
 10:00 am - 11:00 am **State of the Society**
 11:00 am - 11:25 am **History of ASC and Tribute to Founding Presidents**
 11:30 am - 12:00 pm **Papanicolaou Address**
 12:00 pm - 1:45 pm **Panel Luncheon Seminar 1**
 12:00 pm - 1:45 pm **Roundtable Discussions 1 - 8**
 2:00 pm - 2:45 pm **Guest Lecture**
 2:45 pm - 4:15 pm **Innovations & Trends in Medicine**
 4:15 pm - 4:45 pm **Poster Presentation Break**
 4:45 pm - 5:45 pm **New Frontiers Lecture**
 5:45 pm - 7:45 pm **ASC President's Welcome Reception with Exhibitors**
 7:00 pm - 8:30 pm **Video Microscopy Tutorials 10 - 12**

Sunday, November 4

7:00 am - 5:30 pm **Registration Open***
 7:00 am - 8:00 am **Continental Breakfast with Exhibitors**
 7:30 am - 9:00 am **Video Microscopy Tutorials 13 - 14**
 7:30 am - 9:00 am **Workshop 1**
 8:00 am - 9:30 am **Platform Presentations 1 - 6**
 9:30 am - 10:00 am **Poster Presentation and Exhibitor Refreshment Break**
 10:00 am - 12:00 pm **Platform Presentations 7 - 14**
 10:30 am - 12:00 pm **Video Microscopy Tutorials 15 - 16**
 10:30 am - 12:00 pm **Workshop 2**

Sunday, November 4 (continued)

12:00 pm - 1:45 pm **Panel Luncheon Seminar 2**
 12:00 pm - 1:45 pm **Roundtable Discussions 9 - 16**
 2:00 pm - 3:30 pm **State of the Art Symposium**
 2:00 pm - 3:30 pm **Video Microscopy Tutorials 17 - 18**
 3:30 pm - 4:30 pm **Poster Presentation and Exhibitor Refreshment Break**
 4:30 pm - 5:30 pm **State of the Art Symposium (Continued)**
 5:35 pm - 6:05 pm **ASC Annual Business Meeting**
 7:00 pm - 8:30 pm **Career Session**
 7:00 pm - 8:30 pm **Video Microscopy Tutorials 19 - 21**

Monday, November 5

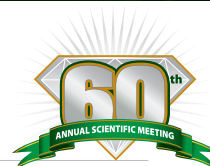
7:00 am - 6:00 pm **Registration Open***
 7:00 am - 8:00 am **Continental Breakfast with Exhibitors**
 7:30 am - 9:00 am **Video Microscopy Tutorials 22 - 23**
 7:30 am - 9:00 am **Workshop 3**
 8:00 am - 9:00 am **Current Issues In Cytology**
 9:00 am - 10:00 am **Poster Presentation and Exhibitor Refreshment Break**
(Permanently closing at 10:00 am)
 9:50 am - 11:00 am **Current Issues In Cytology (Continued)**
 11:00 am - 12:00 pm **Leopold Koss Lectureship**
 12:00 pm - 1:45 pm **Panel Luncheon 3**
 12:00 pm - 1:45 pm **Panel Luncheon with the Presidents**
 12:00 pm - 1:45 pm **Roundtable Discussions 17 - 22**
 2:00 pm - 3:30 pm **Diagnostic Cytology Seminar**
 3:30 pm - 4:00 pm **Refreshment Break**
 4:00 pm - 5:00 pm **Diagnostic Cytology Seminar (Continued)**
 5:00 pm - 6:00 pm **Award Presentations**
 6:00 pm - 8:00 pm **60th Anniversary Celebration**
 7:00 pm - 8:30 pm **Workshops 4 - 6**

Tuesday, November 6

7:00 am - 10:30 am **Registration Open***
 7:30 am - 8:00 am **Continental Breakfast**
 8:00 am - 9:30 am **Workshops 7 - 10**
 8:00 am - 9:30 am **Video Microscopy Tutorials 24 - 25**
 8:00 am - 12:00 pm **New! Thyroid Ultrasound FNA Course**
 10:30 am - 12:00 pm **Workshops 11 - 15**
 10:30 am - 12:00 pm **Video Microscopy Tutorials 26 - 27**

**Please Note:* Pre-registration is recommended. If you register onsite, handouts will not be available until after the Meeting.

Included with Basic Registration	Extra Fee Required
----------------------------------	--------------------



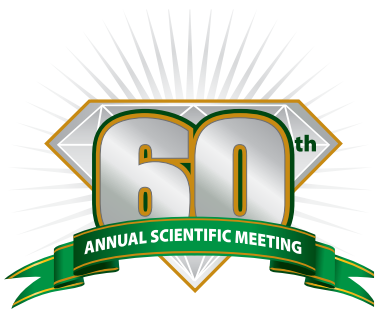
New Frontiers Lecture: Medical Communications and Information in the Internet Age

Join us during the ASC 60th Annual Scientific Meeting for the New Frontiers Lecture on Saturday, November 3rd at 5:45 pm.



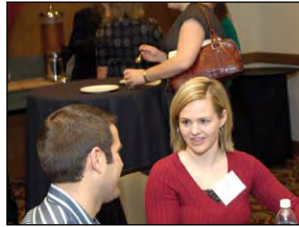
George D. Lundberg, MD

George D. Lundberg, MD is a pioneer of the medical Internet. In 1999 Dr. Lundberg became Editor-in-Chief of Medscape, and the founding Editor-in-Chief of both *Medscape General Medicine* and *HealthWatch.com* from CBS. He served as the Editor-in-Chief of *The Medscape Journal of Medicine*, the original open access general medical journal, and from 2006 to 2009, Editor-in-Chief of eMedicine from WebMD, the original open access comprehensive medical textbook. Dr. Lundberg is past President of the American Society for Clinical Pathology, and former Chair of the Department of Pathology and Laboratory Medicine at the University of California, Davis School of Medicine. A frequent lecturer and webcasting guest and host, and a member of the Institute of Medicine, Dr. Lundberg is now Editor-in-Chief of CollabRx in Palo Alto, Editor-at-Large of *MedPage Today*, Chair of the Everyday Health Advisory Board, a Consulting Professor at Stanford, and President and Board Chair of The Lundberg Institute. In 2000, the Industry Standard dubbed Dr. Lundberg "Online Health Care's Medicine Man."



Networking Events

Gathering for First-Time Attendees



Saturday, November 3rd

8:00 am - 8:30 am
Skyview 1

The ASC welcomes participants of the Annual Scientific Meeting who are attending for the first time. The Annual Scientific Meeting can be quite large and impersonal if you are alone. The ASC extends a welcoming hand, providing a familiar face in the crowd to those "first-timers." Please join us!

ASC President's Welcome Reception with Exhibitors



Saturday, November 3rd

5:45 pm - 7:45 pm
Gold/Silver/Bronze Ballrooms

Don't miss this exciting networking event! Reconnect with colleagues and longtime friends, as well as forge new friendships during this reception with Exhibitors. All attendees are welcome!

Guests may attend for an additional fee.

60th Anniversary Celebration and Silent Auction



Monday, November 5th

6:00 pm - 8:00 pm
Versailles Ballroom, Paris Hotel

Immediately following the Awards Presentation, join us for our 60th Anniversary Celebration toasting the professional achievements of our Award Winners, Members and Attendees who make the ASC what it is today. Enjoy a complimentary beverage (cash bar will be available) while enjoying smooth jazz sounds. All attendees are welcome!

Guests may attend for an additional fee.

GOING ONCE ... GOING TWICE ... GONE!



Monday, November 5th

6:00 pm – 8:00 pm (Bidding concludes at 7:30 pm)
Versailles Ballroom, Paris Hotel

The tradition continues!!! In an effort to raise funds for the ASC Foundation, the ASC will hold a Silent Auction. More than ten talented ASC Members have agreed to submit their one-of-a-kind works of art to the ASC Silent Auction. ***The artwork is beautiful!***

The Silent Auction will take place during the 60th Anniversary Celebration, beginning at 6:00 pm; bidding will conclude at 7:30 pm. Winning bidders will be announced and also notified by email on November 6th. The ASC will ship the artwork to the winning bidder for an additional \$25.00 fee.

Don't miss the chance to purchase quality artwork by ASC Members while supporting a great cause.

100% of each sale will be used for patient advocacy programs supported by the American Society of Cytopathology Foundation.



Marilee Means, PhD,
SCT(ASCP)

Highlights for Cytology Educators on the Web and at the Las Vegas Meeting!

Marilee Means, PhD, SCT(ASCP), Chair
Cytotechnology Education Resources Committee

Q: I have been looking for the **Molecular Curriculum** on the ASC Web site for my students but couldn't find it. It used to be in the e-Library. Where did it go?

A: It is still on the Web site and available to all ASC members and cytotechnology programs. You can find it under the top toolbar under **CIRCe**. It contains 32 slide presentations and over 70 URLs and links to various online resources to help teach various aspects of molecular biology. This unit mirrors the content of the Molecular Biology registry examination given by the American Society for Clinical Pathology (ASCP) and contains other topics as well.

Q: CIRCe? What's that?

A: This acronym stands for the **Cytopathology Innovation Resource Center**, and it is meant to serve as a repository for various resources that both cytotechnology programs and laboratories can utilize as they strive to meet the changing demands of the marketplace and the technology. As examples of other resources within the CIRCe Web site, there are links to various papers including the Future of Cytology; the Cytotechnology Programs Review Committee (CPRC) Educators' Handbook, which contains a wealth of information about improving methods used to teach cytology; a download of the 2011 ASC Annual Scientific Meeting in Baltimore on Transformation in Education and Practice for Cytotechnologists; DNA Ploidy Analysis; and the Virtual Slide Atlas containing over 20 online cases in both gyn and FNA cytology.



Cytopathology Innovation
Resource Center

Q: What other resources are planned for inclusion in the **CIRCe** Web site?

A: We would like to provide a site for the eventual sharing of various program's presentations as originally suggested by Shirley Greening, PhD, JD, CFIAC at the Strategies in Cytology Education (Program Faculty Seminar) in Boston in 2010. Providing links to various vendor web sites that contain educational materials is also planned.

Q: If I wanted to share some resources or presentations that had been useful in our Program for inclusion in the **CIRCe**, who should I contact?

A: Contact Debby MacIntyre at the ASC National Office at dmacintyre@cytopathology.org.

continued from page 115

Q: What is planned for the ASC Annual Scientific Meeting in Las Vegas for cytology educators?

A: The **Strategies in Cytology Education** session will occur on Friday, November 2nd and includes a presentation from Donald Schnitzler, CT(ASCP), CPCR Chair and Stephanie Hamilton, EdD, SCT, MB(ASCP), CPCR Vice Chair. Later in the morning, a presentation of two different approaches to updating the traditional cytotechnology curriculum will be presented by Vivian Pijuan-Thompson, PhD, CT(ASCP) and Marilee Means, PhD, SCT(ASCP). For directors of fellowship and residency programs, a presentation on the Integration of Case-based/Learner-centered Pedagogy will be given by Dr. David Elkowitz, Dr. Deborah Chute and Dr. Patricia Wasserman. In the second session, these same presenters will be joined by Dr. Leslie Dodd, Dr. Lourdes Ylagan, Dr. Aziza Nassar, Dr. Samantha Butler, and Dr. Aylin Simsir for a panel discussion of How to Integrate Active Learning Pedagogies into Cytology Education: A Practical Guide to a Learner-centered Approach.

Q: Those sound like some interesting presentations! What else is going on?

A: Your students and residents or fellows might enjoy going to the **Career Session** to obtain some interesting ideas on helping to find their first job, how to dovetail one's interests with the job search, how to develop their academic or non-academic career, etc. This is a very informal session with small round table, short presentations with plenty of time for individual questions and answers. It is a little like speed dating! The participants last year seemed to enjoy the format and the information provided. This year it is Sunday, November 4th from 7:00 pm to 8:30 p.m.

Q: Any "Hot Topics"?

A: This year, included in the basic registration fee (but pre-registration is required) is a panel on **Workload Recommendations for Automated Pap Test Screening**, moderated by Dr. William Crabtree and Dr. Tarik Elsheikh. Find out what the recommendations are and suggested "best practices" for their implementation.

Q: What else?

A: It is the **60th Anniversary of the Founding of the ASC**, so along with the most cutting-edge presentations in science and technology, we will also be celebrating our history and the legions of dedicated cytotechnologists, cytopathologists, and other researchers who have contributed so much to our professions over the years. **Don't miss it!**



CytoJobs is the site for job seekers looking to land the right job, as well as employers seeking highly qualified applicants. In addition to an extensive database of job postings and candidate resumes, CytoJobs is available to ASC members and nonmembers alike, and is managed by the ASC.

Visit the ASC Web site for more information or contact the ASC National Office at (302) 543-6583.

cytopathology.org

This year, included in the basic registration fee (but pre-registration is required) is a panel on **Workload Recommendations for Automated Pap Test Screening**, moderated by Dr. William Crabtree and Dr. Tarik Elsheikh.



Tarik M. Elsheikh, MD



William N. Crabtree,
PhD, SCT(ASCP)

HOT TOPIC

ASC Workload Recommendations for Automated Pap Test Screening: What's Next?

Join us during the ASC 60th Annual Scientific Meeting on Friday, November 2nd at 6:00 pm.

The recently proposed recommendations by ASC represent an important milestone in regulating the cytotechnologist's workload in automated Pap test screening. These recommendations were also presented to CLIAC in February 2012. The fact that ASCP, ASCT, PSC, and ASC executive boards have unanimously approved those recommendations further emphasize our professional societies' critical recognition of our need to address this issue in a timely fashion. But where do we go from here?

William N. Crabtree, PhD, SCT(ASCP) and Tarik M. Elsheikh, MD will serve as moderators and provide a summary of the ASC Workload Recommendations for Automated Pap Test Screening and update the cytology community about ongoing efforts to address this issue in women's health, in cooperation with the federal agencies, including the newly formed Tri-Agency (CDC/FDA/CMS) workgroup. Panelists include Mark E. Brecher, MD, MariBeth Gagnon, MS, CT(ASCP)HTL, Karen M. Atkison, MPA, CT(ASCP)IAC, and Suzanne M. Werneke, CT(ASCP).

American Society of Cytopathology Foundation



Get Active and Involved!

Help the ASC celebrate 60 years of supporting educational initiatives, research and continuous improvement in the standards and quality of patient care. Your participation in the 5K Run/Walk helps raise money to support our mission and initiatives and the ASC Foundation.

The ASC welcomes both Runners and Walkers at every fitness level to participate in our early morning 5K Run/Walk. *Non-Attendees are welcome to run/walk!*

[REGISTER HERE!](#)



Paratracheal Mass Mimicking Malignancy

Jerome Jean-Gilles, Jr., MD

Elizabeth M. Kurian, MD

UMass Memorial Healthcare System and University of Massachusetts Medical School
Worcester, Massachusetts



Rollover to enlarge images

Figure 1: Non-caseating granulomas in a background of neutrophils and debris (Papanicolaou stain, 60x, 40x)

Figure 2: Multinucleated giant cell with variably sized intracytoplasmic organisms (Papanicolaou stain, 60x)

Figure 3: Rapid cell block with non-caseating granuloma. Note the organisms within the multinucleated giant cells and within the purulence (H&E, 40x)

Figure 4: Fungal organisms with classic morphology (GMS stain- left and PAS stain- right, 60x)

Disclosure: We do not have any affiliations or financial interests in any of the corporate organizations involved with the products to which my case study will refer.

The American Society of Cytopathology is accredited by the Accreditation Council for Continuing Medical Education (ACCME) to provide continuing medical education for physicians.

[Disclosure for Education Planners](#)

AMA Physician's Recognition Award

The American Society of Cytopathology designates this educational activity for a **maximum of 1 AMA PRA Category 1 credit(s)**.TM Physicians should only claim credit commensurate with the extent of their participation in the activity.

The ASC designates these activities for the indicated number of Continuing Medical Laboratory Education (CMLE) credit hours. The CMLE credit hours meet the continuing education requirements for the ASCP Board of Registry Certification Maintenance Program.

This program is approved for continuing education credits in the State of Florida for one credit and the State of California for ½ credit.

Review the [Case Study](#) and visit the [ASC Web site](#) to take the test for Continuing Education Credits.

Clinical History

A 41-year old, Portuguese-only speaking male from Brazil presented with a history of progressive hoarseness and voice loss over the past two years, with exacerbation of symptoms within the last 6 months. Physical exam was unremarkable; however a chest CT demonstrated multiple pulmonary nodules. The subsequent diagnostic bronchoscopy and endobronchial ultrasound (EBUS) revealed a granulomatous and papillomatous-appearing paratracheal mass, measuring 1-2 cm, with involvement of the false vocal cord, which was clinically suspicious for malignancy. Ultrasound-guided transbronchial fine needle aspirate (TBNA) of the paratracheal mass was collected in Cytosolv Red fixative and sent to cytopathology for a preparation of a ThinPrep slide and rapid cell block. A concurrent transbronchial formalin-fixed biopsy of the false vocal cord mass was also obtained, paraffin-embedded and stained with hematoxylin and eosin (H&E).

Cytopathology Features

The TBNA of the paratracheal mass revealed a purulent neutrophilic background with non-caseating granulomas composed of aggregates of multinucleated giant cells, histiocytes and lymphocytes (**Figure 1**). On the ThinPrep, variably-sized round clear-to-eosinophilic organisms were seen in the neutrophilic debris and within the cytoplasm of the multinucleated giant cells (**Figure 2**). Examination of the rapid cell block showed a circular negative image within the multinucleated giant cells and scattered in the neutrophilic debris (**Figure 3**). Special stains (i.e. Gomori-Methenamine silver (GMS), periodic-acid Schiff (PAS), acid fast bacilli (AFB) and mucicarmin) were performed on the paratracheal mass FNA sample. The mucicarmin and AFB stains were negative; while the GMS and PAS highlighted the fungal organisms (**Figure 4**).



In Memoriam

Arline Kaye Howdon, CT(ASCP)

July 21, 1920 – July 20, 2012

Arline Kaye Howdon, who was chief cytologist at Johns Hopkins Hospital and was known nationally and internationally for her work in the field of cytopathology and education, died July 20, 2012 of lung cancer at her home in Baltimore, Maryland. She was 91.

The former Arline Kaye was born in Manhattan and moved with her family to Miami. She was a student at Duke University when she left in 1941 to marry Dr. William M. Howdon, a gynecologist who served in the Army Medical Corps. While raising her son and daughter, Mrs. Howdon resumed her college education and graduated summa cum laude in 1957 from the University of Miami in Florida.

In 1960, Dr. Howdon was appointed to the Johns Hopkins School of Medicine, and Mrs. Howdon began her graduate studies at Hopkins in cytopathology. She joined the cytology unit in the department of cytopathology at Hopkins and advanced to senior cytologist and finally chief cytologist.

Mrs. Howdon worked for Dr. John K. Frost, who established the division of cytopathology and a school of cytotechnology in 1959 at Hopkins. Mrs. Howdon was also an educational coordinator at the Johns Hopkins School of Medicine's School of Cellular Sciences, which had also been founded by Dr. Frost. Mrs. Howdon developed the criteria and the examinations for state certification. She also received three grants from the American Cancer Society to produce training films. She wrote more than 20 articles that were published in professional journals.

Mrs. Howdon, who was a Life Voting Cytotechnologist member of the ASC, received the American Society of Cytopathology's Cytotechnologist Award for Outstanding Achievement in 1974 and was named International Cytologist of the Year in 1982 by the International Academy of Cytology.

She is survived by her daughter, Leslie Shay Jensen of Austin, Texas, three grandchildren and three great-grandchildren. Her husband died in 1994.



Arline Kaye Howdon, CT(ASCP)

There will be a Memorial Service for Arline on October 13, 2012 at The Episcopal Church of the Redeemer, 5603 N. Charles Street, Baltimore, MD.

**PRESIDENT'S BLOG**

Check out the
ASC President's Blog!

Join other ASC Members who have enjoyed reading Dr. Lydia Howell's thought-provoking messages. Check out "Honoring a Founder and Special Mentor" and other postings, and share your comments.



continued from page 119

Irena Grasberg Koprowska, MD

May 12, 1917 – August 16, 2012

On August 16, 2012, Dr. Irena Grasberg Koprowska, an ASC member since 1953, died at home in Wynnewood, Pennsylvania.

Born in Warsaw, Dr. Koprowska married a classmate at the University of Warsaw Medical School in 1938, Dr. Hilary Koprowski, who developed the first polio vaccine in the late 1940s and was director of the Wistar Institute from 1957 to 1991. They escaped from Poland soon after Dr. Koprowska earned her medical degree in December 1939 and spent several years in Rio de Janeiro until moving to the United States in 1944.

Dr. Koprowska completed her residency in pathology at Cornell University Medical College in the late 1940s and in 1954 became an assistant professor of pathology at the State University of New York Downstate Medical Center in Brooklyn. While in New York, she worked with her greatest mentor, Dr. George Papanicolaou, as one of his research fellows and became his closest associate.

When the family moved to Philadelphia in 1957, Dr. Koprowska was hired as the Director of Cytopathology at Hahnemann Medical College. In 1970, she was director of a similar laboratory at Temple University Hospital and a pathology professor at Temple University School of Medicine until her retirement in 1987.

Most notable to the ASC in our 60th Anniversary year, Dr. Koprowska was a founding member of The Inter-Society Cytology Council 60 years ago. In 1985, she was awarded the Society's highest award, the Papanicolaou Award. She was also a member of the American Medical Women's Association. Besides her husband, she is survived by two sons, Christopher and Claude, five grandchildren and three great-grandchildren.



Irena Grasberg Koprowska, MD

Leopold G. Koss, MD

October 9, 1920 – September 12, 2012

Dr. Leopold G. Koss, one of the "Founding Fathers" of cytology, passed away Wednesday, September 12, 2012 at his home surrounded by his family. Dr. Koss was a tremendous force in the ASC as well as the USCAP.

Leopold G. Koss, MD was a native of Poland where he received his primary education. His medical education was repeatedly disrupted by events prior to and during World War II. He received his Medical degree from the University of Bern, Switzerland in 1946. His adventures during the war years were many but cannot be summarized within this space. His parents and only sister perished during the Holocaust.

Dr. Koss' interest in microscopy and pathology stems from his involvement in experimental embryology during student days in Bern. He arrived in the United States in 1947. He trained in

continued from page 120



Leopold G. Koss, MD

pathology at the Kings County Hospital in Brooklyn under the great renal pathologist and Chairman of the Department of Pathology, Dr. Jean Oliver, who encouraged him to pursue an academic career. In 1952, he joined the staff of the Memorial Sloan-Kettering Cancer Center in New York City where, except for military service in Korea, he remained until the end of 1970. He had fond memories of his association with the legendary pathologist, Dr. Fred W. Stewart, and many other distinguished colleagues at that institution. In 1973, he became the Chairman of the Department of Pathology at Montefiore Medical Center and the Albert Einstein College of Medicine, where he remained active until his death as Professor and Chairman Emeritus.

Dr. Koss has been honored repeatedly by his peers. He received, among others, the Papanicolaou, Goldblatt and Masubuchi Awards, the Sloan Award in Cancer Research and the Gold-headed Cane Award from the American Society of Investigative Pathology. He was an Honorary Fellow of the Royal College of Pathologists (UK), a member of the German Academy of Sciences (Leopoldina), and a Fellow of the American Society for the Advancement of Sciences. He was honored as “Distinguished Pathologist” by the U.S.-Canadian Academy of Pathology and the Association of Pathology Chairmen. He was one of the original members of the ASC and received a Lifetime Achievement Award from the ASC in 2002.

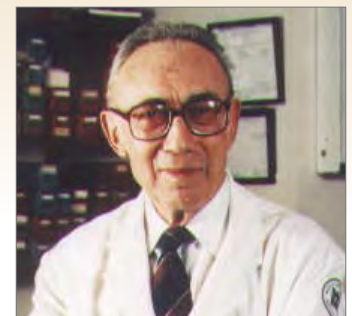
There will be a Memorial Service for Dr. Koss on October 26, 2012 at 2:00 pm at the Riverside Memorial Chapel, 180 West 7th Street, New York, NY.



Support the ASC Legacy Fund

The American Society of Cytopathology Foundation is pleased to continue the ASC Legacy Fund, a lectureship in honor of Dr. Leopold Koss. This lectureship recognizes the significant contributions Dr. Koss has made to cytopathology research, teaching and patient care.

Dr. Koss was a distinguished member of the American Society of Cytopathology and a leader in the profession, whom I first met through my mentor, Dr. Irena Koprowska. He wrote the textbook in cytopathology that trained everyone in my generation. Dr. Koss was always outspoken and challenged his audience to think differently about diagnostic conundrums. Although he was always very interested in science and cytopathology, Dr. Koss also highly valued arts and culture.



Leopold G. Koss, M.D.
Founding Contributor, ASC Legacy Fund

Additionally, Dr. Koss was very generous and gave the ASC funds to start the Leopold Koss Lectureship, a founding gift within the ASC Legacy Fund. This lecture is presented annually, and alternates between a distinguished scientist and a prominent individual dedicated to the humanities in medicine, reflecting Dr. Koss’ broad interests. He has left a lovely and meaningful legacy for all of us to remember him.

ASC President Lydia Pleotis Howell, MD, FASCP

➤ Donate now to the Leopold Koss Lectureship
Online at cytopathology.org or call the ASC National Office at (302) 543-6583

All donors will be recognized for their contributions and receive a DVD of Dr. Koss's video presentation during The 57th Annual Scientific Meeting in 2009.



Foundation President's Column: What Will You Leave Behind

Dorothy L. Rosenthal, MD, FIAC
President, ASC Foundation



Dorothy L. Rosenthal,
MD, FIAC

Diamond Jubilee! Thoughts of celebration with parades, fireworks, floats and marching bands come to mind!! The ASC is coming close to that image by holding the 60th Annual Scientific Meeting in Las Vegas, where celebration is a 24/7 phenomenon. But what's left when the parade is over?

As a young child, growing up in the New York City environment, the Macy's Thanksgiving Day Parade was a monumental event for me, and even better when televised as you could really see the details "up close." Even at the age of 8 or 9, I was struck by the remains of the parade, after the floats, the marching bands, the horses, and elephants! You know what was left down the middle of Fifth Avenue. So the end of the parade, without any musical accompaniment, was the Sanitation Department Workers!

How, you may ask, am I going to weave that last sentence into a Foundation Plea? How one lives their life is reflected by what they leave behind, their legacy. One of the reasons for establishing the ASC Foundation a decade ago was to be able to fund programs that would be lasting tributes to the efforts and talents of our members. Our membership has been extremely responsive and responsible in contributing to the Foundation through "Make Your Mentor a Star," and now through "Diamonds in the Rough," a testament to the results of the Mentors. The Legacy Fund is another vehicle for contributing.

Perhaps a more permanent way to commemorate your commitment to your profession is through an endowment, using stocks, life insurance, an irrevocable trust, or other means of dedicating a part of your estate to the Foundation. Planned giving may bring with it thoughts of your own mortality, but remember that none of us makes it out of life alive. What better tribute to your life well lived than an endowment in your name or that of a loved one!

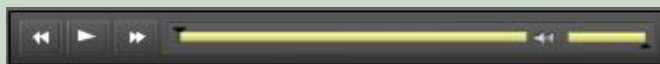
Leaving behind an enduring gift is worthy of your consideration. Please contact Beth Jenkins at bjenkins@cytopathology.org for further information.



INTERVIEWS

Michael S. Facik, CT(ASCP)CFIAC

Michael shares some poignant thoughts about his career in cytology and with the ASC.





Celebrate Your Mentoring Experience!



As Mentors, you celebrate the legacy of those you have trained, and those who make you proud when they give a lecture, or when you read an article they have written. With a gift of any size to the Foundation, you can make a "DIAMOND" of a special Mentee.

Your Mentee will:




- Receive a thank you card with your name to indicate that you have recognized them.
- Be publicly recognized in the Diamond Showcase on display at the ASC Annual Scientific Meeting, published in *The ASC Bulletin* and posted on the ASC Web site.
- Know that you shared your professional values through your support of research, education and advocacy programs sponsored by the ASC Foundation.

One can never say thank you too much or too often for the gift of mentorship. Make a Star of Your Mentor to show your gratitude through a gift of any size to the ASC Foundation. Give your mentor a special place in our galaxy as a Shining Star, Gold Star, or Center of the Universe.

Your mentor will:

- Receive a personalized card to indicate that you have honored his/her contributions to your education.
- Be publicly recognized at the ASC Annual Scientific Meeting, published in *The ASC Bulletin* and posted on the ASC Web site.



	1-CARAT DIAMOND Up to \$999 contribution in honor of your Mentee
	5-CARAT DIAMOND \$1,000 to \$4,999 contribution in honor of your Mentee
	10-CARAT DIAMOND \$5,000 and higher contribution in honor of your Mentee

		
Shining Star A mentor honored in two or more consecutive years.	Gold Star A mentor honored by five or more mentees.	Center of the Universe A mentor honored with donations totaling \$1,000 or more.

Visit cytopathology.org for more information

Wondering how we have advanced imaging, again?



At ASC,
you'll be seeing

DuoTM



Introducing Imager Duo^{*}, the newest addition to the ThinPrep[®] Imaging family. Let more speed and increased functionality keep your laboratory on the cutting edge of cervical cancer screening.

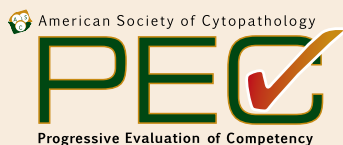
Booth #**303** at ASC!

HOLOGIC[®]

The Women's Health Company

*Estimated availability December 2012.

REGISTER FOR 2012-2013 NOW!



Offered to pathology residents and cytopathology fellows, the Progressive Evaluation of Competency (PEC) is designed to track the progress of these professionals through the year and gauge their overall competency as they begin their careers in cytopathology. The PEC program is available to Program Directors who are current ASC members. The ASC is excited to help the future of cytopathology by providing this comprehensive program to ready the next generation of Cytopathology professionals.

The ASC solicits feedback to improve the program, through surveys to Program Directors and participants, and reviews and approves all questions to provide quality education.

New in the program is the successful implementation of descriptors to aid Program Directors in the education of their Fellows. If you are interested in submitting a question to be considered for future PEC exams, please contact asc@cytopathology.org

PEC for Cytopathology Fellows

The 2012-2013 Exam Schedule is:

- The 2012-2013 Pre-Exam (July 16-30, 2012) Comprehensive Results are in for 106 Fellows, who took the Pre-exam from 70 Fellowship Programs.

Total	GYN (Gynecologic)	NG (Non-Gynecologic)	FNA	ANC (Ancillary)	LO (Laboratory Operations)
67%	68%	70%	61%	73%	59%

- Mid-Exam: January 21, 2013 – February 4, 2013
- Final-Exam: May 6, 2013 – May 20, 2013

PEC for Pathology Residents

For the 2012-2013 Series, PEC for Residents Exams will be open 24 hours a day, 7 days a week beginning July 1, 2012 and ending June 30, 2013. This availability should accommodate all Programs and the various cytology rotation times.

PEC for Senior Residents

Offered to Senior Residents and/or Residency Program Directors, the PEC for Senior Residents is a preparation tool for the Anatomic Pathology Board exam. The exam is designed as a self-assessment test to assist senior residents in identifying areas of strength, weakness and/or improvement. PEC for Senior Residents is offered in online format and provides a single, 100-question exam, which is open the same exam periods as the PEC for Fellows Mid-Exam and Final Exam dates. Exam results are returned immediately upon completion of the exam for printing and self-review or with the Program Director.

Visit the ASC Web site for purchase information.



Cancer Cytopathology is Moving to Monthly in 2013

The American Cancer Society and Wiley-Blackwell have announced that *Cancer Cytopathology* will increase its publication frequency in 2013 from a bi-monthly to a monthly schedule. This acceleration to twelve issues per year reflects a need to accommodate growing volumes of high quality submissions drawn to the journal by its responsive editorial process and reputation for excellence, as measured by the ISI Impact Factor. The 2011 Impact Factor was released on June 28th and *Cancer Cytopathology* saw another increase, to 3.33 from 2.8 (+18%). We are pleased to share with you these significant developments.



cytoeconference 2012-2013



The 2012-2013 Cyto-econference Series Continues



Shikha Bose, MD



OCTOBER 23, 2012 | 3:00 pm ET

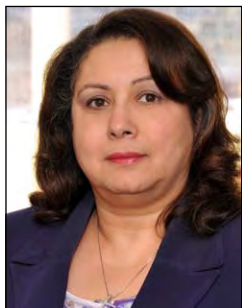
Screening for Anal Carcinoma and Its Precursors

Shikha Bose, MD

Director, Cytopathology Division
 Department of Pathology
 Associate Professor, Cedars Sinai Medical Center
 Associate Professor, David Geffen School of Medicine
 UCLA
 Cedars Sinai Medical Center
 Los Angeles, California

NEW!
 Participate and follow on Twitter (#asceconf) each month to ask the speaker questions.

With the advent of therapy for immunosuppressed individuals and a consequent increase in the incidence of anal carcinoma, anal Pap smears are rapidly gaining acceptance as an effective method for screening for carcinoma. This webinar addresses precursor lesions, their etiology, and morphology and provides an update on ancillary testing.



Claire W. Michael, MD



NOVEMBER 27, 2012 | 3:00 pm ET


Effusion Cytology Work-up: The Old and The New


Claire W. Michael, MD

Director, Clinical Research & Faculty Development
 Case Western Reserve University
 University Hospitals Case Medical Center
 Cleveland, Ohio

This webinar illustrates the most commonly encountered differentials and those that pose particular challenges to pathologists with emphasis on the integration of morphology with advances in ancillary techniques. Discussion includes an overview of cytology, review of applicable immunocytochemistry and the proposed optimal panel. A short discussion concludes with a review of current molecular studies pertinent to the differential and demonstration of its practical clinical applications.

Free to all **ASC** members



AMERICAN SOCIETY OF
Cytopathology 

Education. Research. Advocacy.

Track your educational progress:

- Log into the ASC Web site
- See ASC activities you have completed
- Calculate CME/CMLE/SAM credits earned



THE TIME IS NOW. ASC IS THE PLACE.

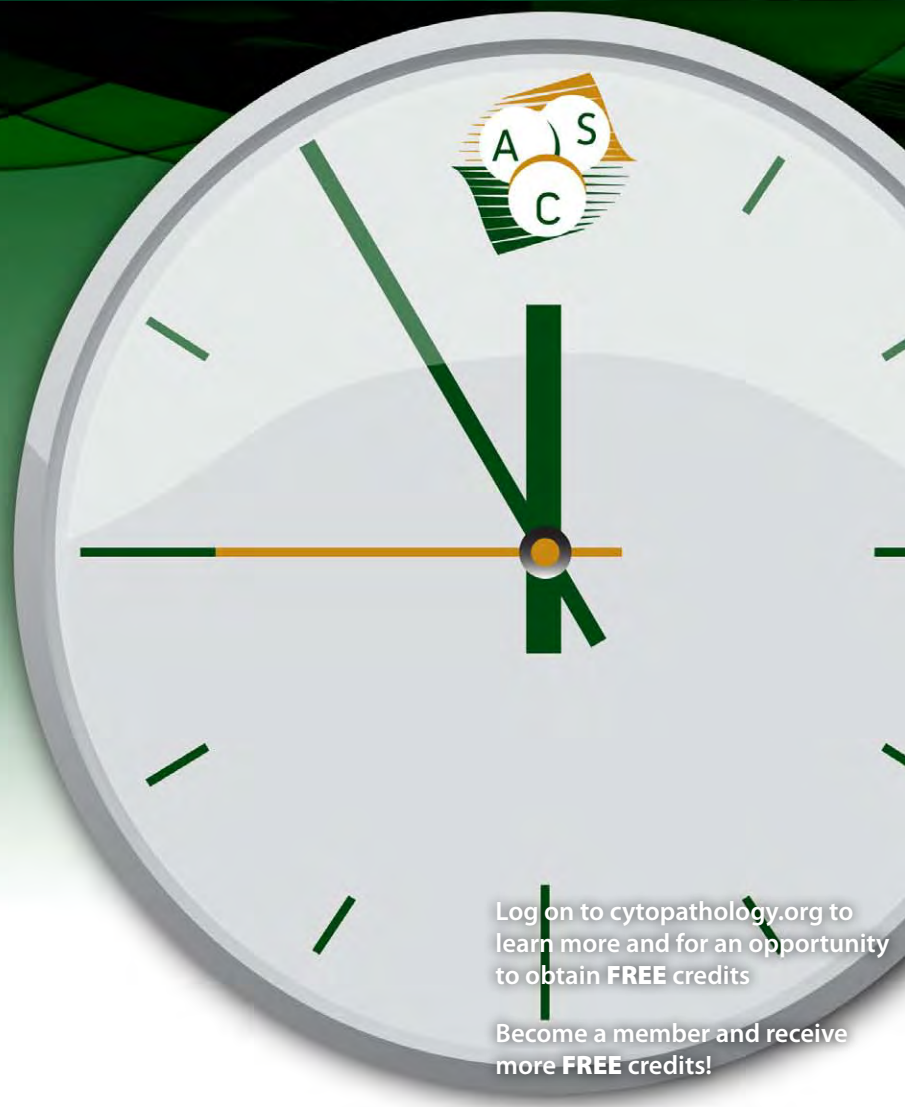
The American Society of Cytopathology is your place for CME and SAM activities to help satisfy your MOC requirements. Don't delay!

Visit cytopathology.org to find out how you can obtain FREE credits!

AMERICAN SOCIETY OF
Cytopathology



Your Educational Source
cytopathology.org



Log on to cytopathology.org to learn more and for an opportunity to obtain **FREE** credits

Become a member and receive more **FREE** credits!



ATTENTION PATHOLOGISTS WITH TIME-LIMITED CERTIFICATE

Your Board Certification Requires Action!

Your MOC process requires you to submit reports to the American Board of Pathology every two years including CME and SAMs information. Your exam can be taken as early as eight years.

The ASC has online courses that will provide you with CME and SAM:

- Cyto-econference
- eJournal (ASC members receive free with 2012-13 Dues)
- Case Studies
- Annual Scientific Meetings
- Podcasts

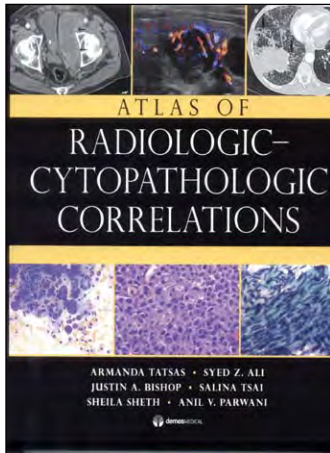
Stay current. Stay informed. Get ahead.

Phone: (302) 543-6583

Fax: (302) 543-6597

Email: asc@cytopathology.org

Web: cytopathology.org



Atlas of Radiologic-Cytopathologic Correlations

Armanda Tatsas, MD, Syed Z. Ali, MD, Justin A. Bishop, MD, Salina Tsai, MD, Sheila Sheth, MD and Anil V. Parwani, MD

Demos Medical @ April 2012,
1st Edition

Price: USD \$135 (Amazon.com)

ISBN #: 9781608312757

Hardbound, 216 pages

ISBN-10: 1936287692

ISBN-13: 978-1936287697

Book Review

Atlas of Radiologic-Cytopathologic Correlations

Judith Modery, MA, SCT (ASCP)

Magee Womens Hospital, University of Pittsburgh Medical Center

Experts in the fields of pathology and radiology collaborated to create a comprehensive atlas of organ systems and the diseases affecting them. Cytopathologists and cytotechnologists depend upon clinical and radiographic information when rendering diagnostic impressions from cytologic samples, and the *Atlas of Radiologic-Cytopathologic Correlations* is an excellent pictorial reference for both practicing and teaching medical professionals. The text consists of six chapters including Head and Neck, Thoracic, Abdomen, Pelvis, Lymph Nodes and Bone and Soft Tissues.

A brief preface introduces the authors' rationale and efforts in the creation of their atlas, explaining that joint conferences held between The Johns Hopkins Hospital's Departments of Pathology and Radiology, for the past fifteen years, utilized many diagnostically challenging cytology cases along with "extensive academic and clinical discussion using high-resolution digitized images." From these conferences the authors gathered many of the most interesting and illustrative cases from their files and published them in this atlas in order to share their experiences. The results of their teamwork are contained in individual atlas chapters organized in a structured design of digital images underscored with brief, but concise, informative descriptions beneath each image.

This compilation of images and information is truly in atlas format. The reader will not find lengthy chapter discussions in traditional paragraph form, but rather, for example, in chapter one, "Head and Neck," the authors present a beautifully illustrated case of a Fine-Needle Aspiration (FNA) of papillary thyroid carcinoma. The cytologic images demonstrate the classic picture of papillary architecture, "bubble-gum" colloid, pseudoinclusions, nuclear grooves and psammoma bodies using Pap and Diff-Quik stained samples. Correlating sonographic and color Doppler images are presented side-by-side with brief explanatory narratives. Confirmatory histologic samples of the tumor are also included making the presentation a complete reference or teaching model in twelve reference images and descriptions. The remaining cases in this chapter include seven other examples of thyroid and salivary gland tumors with corresponding radiologic images. The addition of the radiographic information completes the cases in their clinical entirety which is often missing in other cytopathology instructional texts.

The following five chapters contain a collection of both commonly and unusually encountered benign processes and primary and metastatic malignancies including those of the lung, mediastinum, pancreas, liver, kidney, adrenals, pelvis, ovaries, lymph nodes, bone and soft tissue. Clearly annotated and "arrowed" descriptions of radiologic images are presented as critical elements of the FNA cases, as in the well-documented case of an adrenal pheochromocytoma. This method is especially helpful for those individuals unfamiliar with CT's and sonographic views. Also included for many of the cases are selected immunohistochemistry and H&E stained surgical section images that corroborate diagnoses.

Over 700 high resolution and high quality FNA digitized images of a variety of non-neoplastic and neoplastic conditions matched with multiple corresponding radiologic images and surgical samples make this *Atlas of Radiologic-Cytopathologic Correlations* a fine reference and excellent teaching tool. According to the publisher, this text book is one in a series of Cytopathology Atlases published or soon to be published.



Newly-elected Members

Please welcome the following individuals to ASC Membership!

Medical Membership

Khalid Amin, MD
 Ronald M. Angeles, MD
 Cory Bernadt, MD, PhD
 Therese J. Bocklage, MD
 Agnes Colanta, MD
 Enrique E. Cotes, MD,
 CT(ASCP)
 Luis A. Diaz-Rosario, MD
 Ryan C. Des Jean, MD
 Tracy A. Dewenter, MD
 Edward Gutmann, MD
 Christopher Hager, MD
 Diane Hamele-Bena, MD
 Ryan L. Hendren, MD
 Said Hafez-Khayyata, MD
 Joyce King, MD
 Vandana Kumar, MD, FCAP
 Kim M. Parker, MD
 Graham Parks, MD
 Ilan Reder, MD
 Louis S. Sarbeck, MD
 Venetia R. Sarode, MD
 Trisha M. Shattuck, MD, PhD
 Jack B. Shelton, MD
 Stephanie B. Soofer, MD
 Pamela Tauchi-Nishi, MD
 Jean Thomsen, MD
 Dean Tung, MD, BSc
 Lichao Zhao, MD, PhD

International Medical Membership

Amitabha Basu, MD
 Dilaver Demirel, MD, MIAC
 Carla Molina, MD
 Kara Prigenzi, MD
 Fernando C. Schmitt, MD, PhD
 Lakshmi Venkatraman,
 FRCPath, MPhil

Cytopathology Fellow Membership

Laura J. Adhikari, MD
 Gitika Aggarwal, MD
 Jeffrey J. Aufmann, MD
 Cletus Baidoo, MD
 Kim N. Berg, MD
 Stephen J. Bloechl, MD
 Olga S. Chajewski, MD
 Joseph P. Eaton, DO
 Wen-Chi Foo, MD
 Sharon M. Hirsh, MD

Wamda Goreal, MBChB
 Pil Gyu Hwang, MD, PhD
 Julie A. Jackson, MD
 Li Yan Khor, MB BCH
 Andra O. Kovalovsky, MD
 Zaibo Li, MD, PhD
 Lina Liu, MD
 Eric R. Montgomery, MD
 Lorna L. Ogden, MD
 Olaronke Oshilaja, MD
 Rajiv R. Pulinthanathu, MD
 Erika Rodriguez, MD, PhD
 Corinne Stephenson, MD
 Sumi M. Varghese, MD
 Dava S. West, MD
 Sarah M. Wilkins, MD

Pathology Resident Membership

Jane I. Bernstein, MD
 Benjamin B. Cho, MD
 Cristina Cole, MD
 Mayes Dormosh, MD
 Natalie Freed, MD, MBS
 Dianne E. Grunes, MD
 Jena B. Hudson, MD
 Jaclyn L. Jerz, MD
 Andrew E. Johnsen, MD
 Nicole J. Nelles, MD
 Ravi Patel, MD
 Reveena Reedy, MD
 Wichit Sae-Ow, MD
 Akeesha A. Shah, MD
 George D. Smith, MD
 Matthew A. Smith, MD
 Matthew J. Swadley, MD
 Shaozhou K. Tian, MD
 Lakshmik Vemavarapu, MD
 Jessica Wang, MD
 Lu Wang, MD
 Jana L. Wimmer, MD

Cytotechnologist Membership

Catherine Adams, CT,
 MB(ASCP)
 James Ailes, BS, CT(ASCP)^{CM}
 Erin J. Amsden, CT(ASCP)^{CM}
 Diane L. Avery, MA, BS,
 CT(ASCP)
 Judith L. Burns, BS, CT(ASCP)
 Brady J. Callahan, CT(ASCP)
 Donna S. Cary, BS, CT(ASCP)

Pierce Chamberlain, BS,
 CT(ASCP)^{CM}
 Paul Chiou, MPH, CT(ASCP)
 Ronald E. Clark, BHS, MBA,
 SCT(ASCP)
 Constantinos Coutsouvelis,
 CT(ASCP)
 Ramonito B. De Leon, BS,
 CT(ASCP)
 Maryann S. Demers, CT(ASCP)
 Ranetta Garrison, BHS,
 CT(ASCP)
 Tracy F. Justice-Clark, BS,
 CT(ASCP)
 Jennifer B. Kernodle-Zimmer,
 BS, CT(ASCP)
 Mark Krause, BS, MT,
 CT(ASCP)
 Elizabeth F. Kronenberg, MS,
 CT(ASCP)^{CM}
 Lucie Machabee, RT
 Kelly E. Marshall, MLT, Hon.
 BSc
 Marie-Louise Meneshian, BS,
 IAC, CT(ASCP)
 Francesco A. Mercuri, MS,
 CT(ASCP)
 Marte Nael Monroy Borrayo,
 CT(IAC)
 Cheyenne Nance, MS,
 CT(ASCP)^{CM}
 Joshua H. Newman, BS,
 CT(ASCP)^{CM}
 Kimberly J. Oswald, BS,
 CT(ASCP)
 Desiree Palafox, BS, SCT(ASCP)
 Curtis W. Rice, MS, BS,
 SCT(ASCP)IAC
 Jennifer Richer, CT(ASCP)^{CM}
 Kimberly R. Robinette, BS,
 CT(ASCP)
 Hector Soto, MS
 Valerie M. Straubmuller, BS,
 SCT(ASCP)
 Patricia Surma, BS, CT(ASCP)
 Andrea J. Trujillo, BS,
 CT(ASCP)
 Kimberly Ung, MLT
 Andrew J. Veyliotti, MS,
 CT(ASCP)
 Nila Win, CT(ASCP)
 David M. Youk, MS, CT(ASCP)

Student Cytotechnologist Membership

Reda Alqassab
 Adam Bennett
 Chad Craig
 Vassil Delev
 Brian H. Dimmitt, BS
 Mary Hooper
 Renita F. Kagen, BS
 Megan L. McCartney
 Kelly L. McCune
 Maria Miller
 Laura Mulheron
 Mariela Q. Ortiz
 Lymaris Quinones-Davila, BS
 Laxiang Wan
 Bonnie Williamson

Scientist Membership

Annie Laurie W. Shroyer, PhD

Affiliate Membership

Anna M. Callender, MBA
 Peter Hartmayer, BS
 Arnold J. Scheer, MD, MPH

International Affiliate Membership

Sham Chi-Hoi, BSc, CFIAC
 Emanwell E. Siddiq, BSc
 Rajesh K. Singh, MSc
 Kumari Vandana, MSc

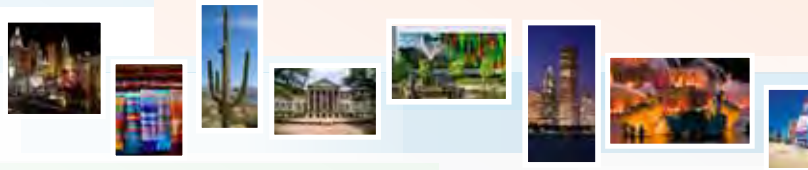
Life Membership

Barbara F. Atkinson, MD
 Theresa A. Clark, BS, CT(ASCP)
 Paul Goodman, MD
 Allen C. Rinas, MS, SCT(ASCP)
 CMIAC
 Satinder K. Singh, MD

Follow us on



2012 ASCP Pathology Meetings



Cytopathology Update: A Practical Approach to Diagnostic Issues, Limitations, and Pitfalls

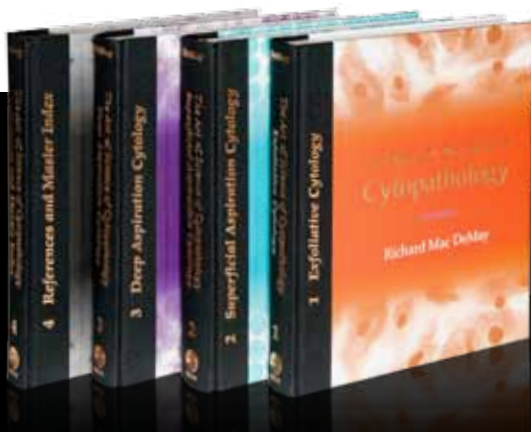
Date: December 10-13, 2012
Location: Hilton Fort Lauderdale
Course Directors: Syed Z. Ali, MD, FASCP and Gregg A. Staerke, MD, FASCP
Credits:  27 CME Credits  11.0 SAM Credits

This course will serve as both an overview of selective problem areas and as a refresher. Special course features include unknown case tutorials presented by the faculty, review of glass slide study sets with individual microscopes, and comprehensive reference materials, including an image atlas.

Following this course, you will be able to:

- Appropriately evaluate morphologic changes in certain diagnostically challenging areas of cytopathology for higher diagnostic accuracy.
- Improve communication and promote collaboration between clinicians, radiologists, and cytopathologists.
- Apply new ancillary techniques and molecular tests to process and define challenging cytologic samples.
- Analyze PAP test automation and HPV testing for better understanding of their clinical and diagnostic roles.
- Review and appraise the Bethesda System for reporting thyroid cytopathology (TBSRTC) for a multidisciplinary approach to thyroid disease.

For complete details about the course, faculty, rates, hotels and to register visit: www.ascp.org/pathmeetings



The Art & Science of Cytopathology 2nd Edition

Richard Mac DeMay, MD, FASCP

BIGGER. BETTER.

4 Volumes
2,076 Pages
6,849 Images
More than 25,000 References

DeMay's Art & Science of Cytopathology has been updated to reflect the many and dramatic new advances in the field—with thousands of beautiful new images!

ASCP Member: \$475 | List: \$575
 Order#: 6449 | ISBN: 9780891896449

Order online at: www.ascp.org/books

Welcome to the Help section of *The ASC Bulletin*

This interactive format allows you to:

- Easily flip through pages one-by-one
- Access the Contents section and link directly to articles of interest
- Use the Search box to lookup any word or phrase
- Zoom in on text or roll over images to get a closer look
- Click on web links to access additional resources
- Share the publication with associates via email or your favorite social network.

Here's how to get started:

Bottom Navigation: Use the green bar at the bottom of the page to navigate within the publication.

Home: Jumps back to beginning of publication

Contents: Displays full Table of Contents with links to all articles

Previous Page: Jumps back one page in the publication

Next Page: Jumps forward one page in the publication

Top Navigation: Use the silver bar at the top of the page to print, download, share with associates, and link to the American Society of Cytopathology Web site.

ASC Logo: Links directly to the ASC Web site

Share: Email a link to an associate or share the publication using your favorite social network

Print: Print the entire document or select pages to your choice of printer

Archives: Links directly to *The ASC Bulletin* archives

Download: Saves a PDF version of the publication to your computer

Thumbnails: Click on the thumbnails to the left of the publication to jump directly to that page.

Search: Use the search box to find any word or phrase.

We hope you enjoy this digital edition! If you have any questions or suggestions, please contact us at asc@cytopathology.org.