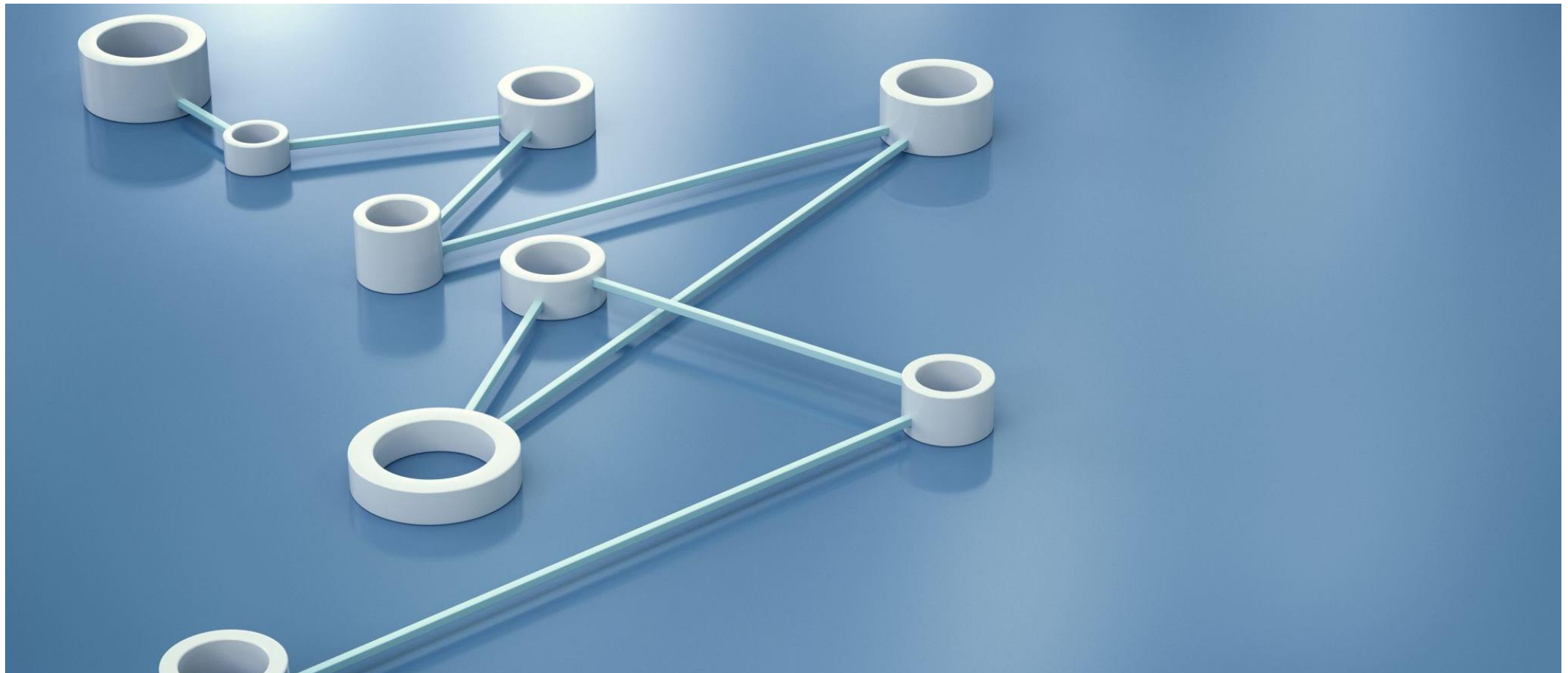


# Empowering Connections:

Advancing Foster Care with Youth-led Insights



# Community Cafe

## Agenda



Overview of the SLF Think Tank on Permanent Connections (5 minutes)



How the content for this café was developed (5 minutes)



Small group discussions and report out



# Objectives

What we hope to accomplish

Enhance

Enhance Ongoing Family Search Efforts

Promote

Promote Genuine Youth Engagement In Policy and Planning

Develop

Develop Youth Centered Transition Planning Strategies

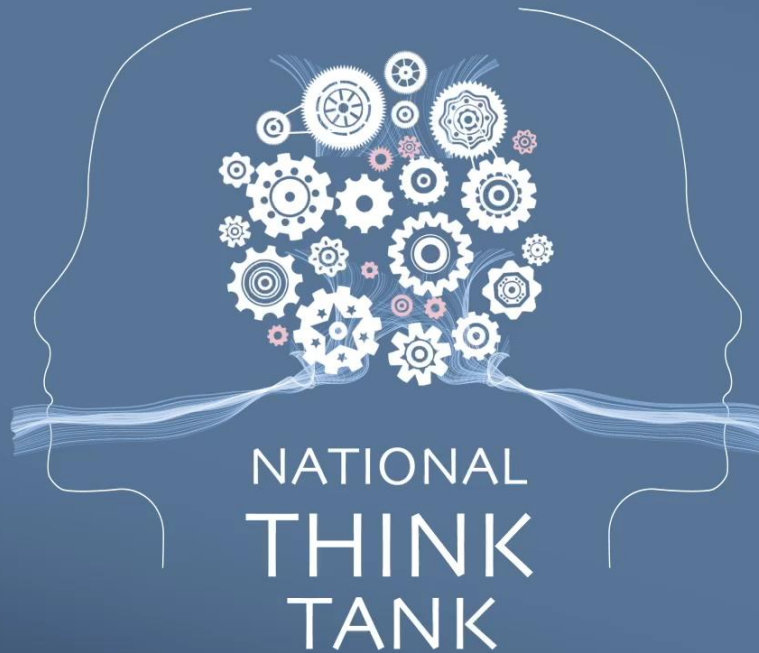
Encourage

Encourage Ongoing Engagement with Local Youth Councils



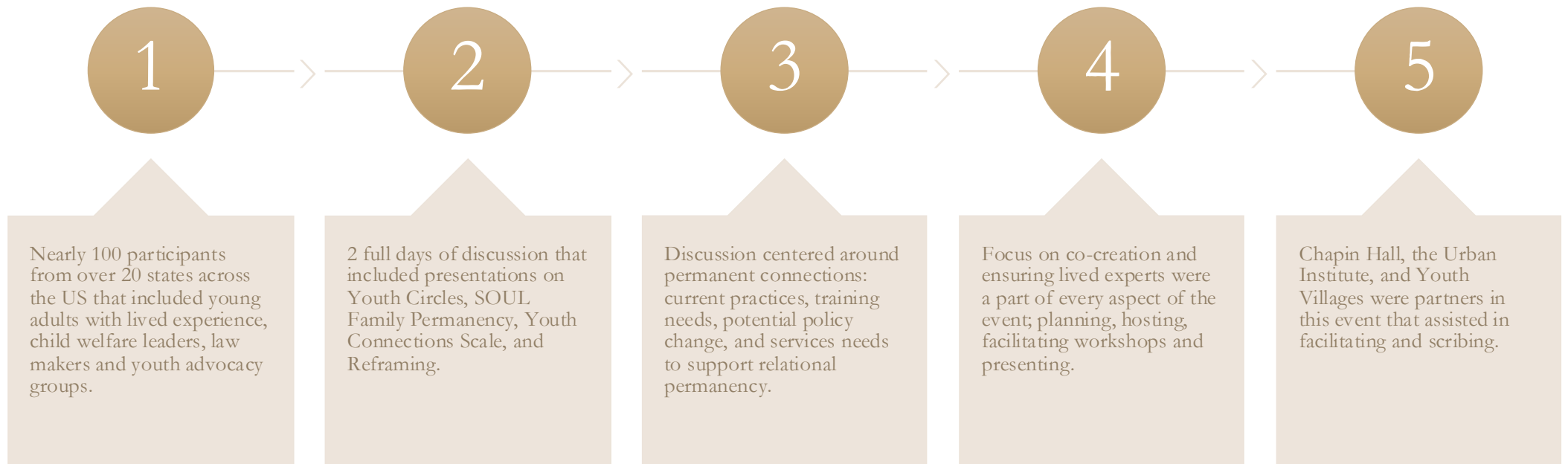
# Think Tank on Permanent Connections

 SELFLESS LOVE FOUNDATION



# Think Tank on Permanent Connections

## Overview



# Think Tank on Permanent Connections

## Next Steps

- Engage lived experts in discussion on the 10 recommendations on next steps for policy and practice
- Provide a resource to guide discussion based on findings of Chapin Hall report
- National Network meetings quarterly to share best practices
- Engage Florida youth in the discussion with Florida's child welfare system leaders



# Developing the Cafe

Engaging Lived Experts



Met with 5 councils throughout the state



Received over 264 comments



Every group ranked recommendations



Top 3 recommendations would be used for discussion at the FCC Community Cafe



# Discussion Topic 1

## Youth Led Insights

- We must leverage Family Finding/Family Search routinely to identify possible permanent connections, not just at the beginning of a young person's entry into care.
  - How can we make sure family finding happen regularly and not just at the start?
  - What impact do regular family searches have on a youth's sense of stability and belonging?
  - What challenges do we face with family finding efforts and how can we improve this to better support youth?



# Discussion Topic 2

## Youth Led Insights

- We must engage young people with lived experience in policy and planning without tokenizing them and identify mechanisms to share power and be accountable to them.
  - How can we ensure your involvement in policy and planning feels genuine and not tokenistic?
  - What are effective ways for us to share power with you in the decision-making processes?
  - How can we be accountable to you and other lived experts in our policy decisions?



# Discussion Topic 3

## Youth Led Insights

- How can we implement strategies centered around young people for transition planning that reinforce existing relationships and support healthy development while leveraging third-party facilitators who can assist a young person in designing their own transition planning meetings.
  - How can we ensure your transition planning is centered around your needs and preferences?
  - In what ways can we strengthen your existing relationships during your transition out of care?
  - What does healthy development look like to you, and how can we support this in your transition planning?



Thank you for  
participating!



SELFLESS LOVE FOUNDATION

QR code for Chapin Hall Report



J.R. Minter, Advocacy Director



[jminter@selflesslovefoundation.org](mailto:jminter@selflesslovefoundation.org)

Janessa Collins, Advocacy Coordinator



[jcollins@selflesslovefoundation.org](mailto:jcollins@selflesslovefoundation.org)

