



General Plan Guidelines

Office of Planning and Research

September 2015



Why update guidelines?

How have they changed?

**Relationship to Coastal Plans and Hazard Mitigation
Plans?**



Why update guidelines?

The Office of Planning and Research is responsible for issuing guidelines for for preparation and content of local general plans ([Government Code §65040.2](#)).

The last update to the General Plan Guidelines was in 2003, and there have been numerous new laws, requirements, resources, and research that affect general planning

As of 2015, more than half of local jurisdictions have general plans that are over 15 years old

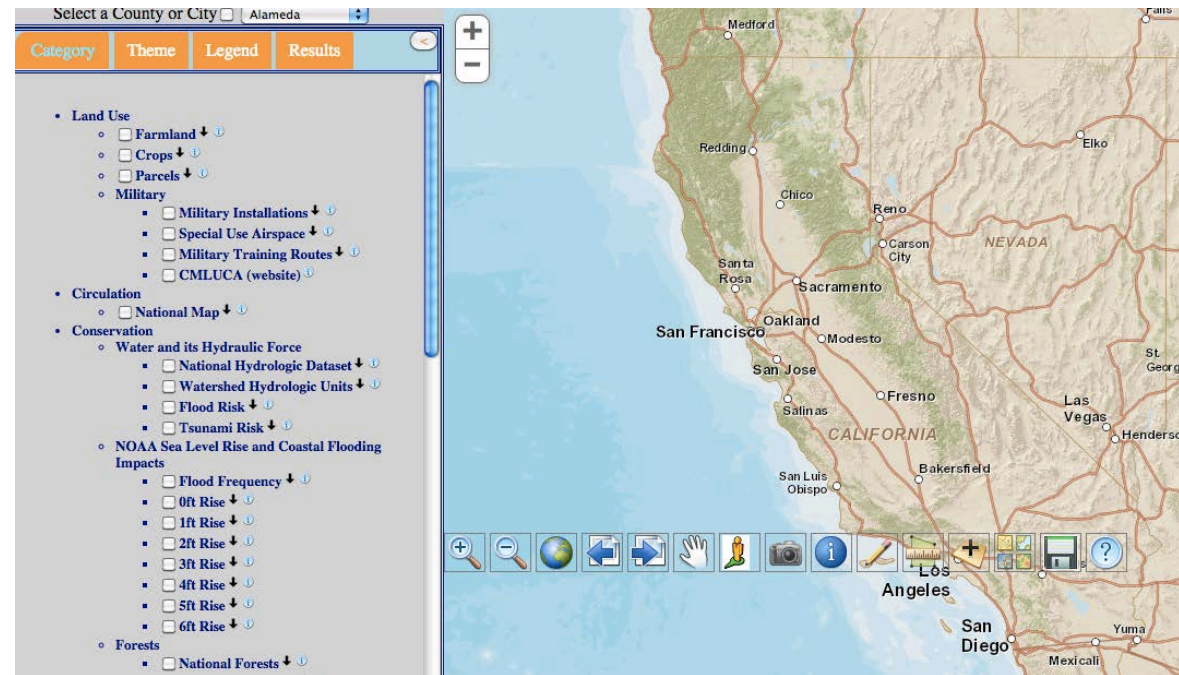
The process of adopting a new general plan can be time consuming and costly



Vision for the GPG Update

a suite of tools

1. Policy Document: General Plan Guidelines
2. Online Data Mapping Tool
3. Updated Website





Integrating Suggestions from Outreach

- Vision, how-to-guide, and outreach strategies open the guidelines
- Restructured layout to be user friendly
 - Clear description and examples of multiple ways to structure GP
- Sample policies for various communities in cut and paste format
- Improvement of website and tool for users
 - Guidelines divided by sections, link directly to tool, sample policies, and examples



General Plan Guidance

Required Elements

Land use

Circulation

Housing

Conservation

Open Space

Noise

Safety

Air Quality

Additional Elements often Included

Healthy communities

Climate Change

Economic Development



General Plan Guidance

Flood Management and Resilience

Flood management can be integrated in to every element in the General Plan, but **must** be included in the land use, conservation, and safety sections.

Cities and Counties may choose to combine this discussion in a section on climate change or separate water element, for example.

The updated GPG guidelines include robust discussions on community resilience and climate change, with links to state and federal resources for more information

Relationships between elements and topics are expanded also, to focus on connections between drought, flooding, and fire, for example.



General Plan Guidance

Flood Management and Resilience

As the master document for planning in a jurisdiction, all plans must be consistent with the general plan, including hazard mitigation plans, specific plans, and climate action plans. The general plan must also have internal consistency, including consistency between elements and policies.

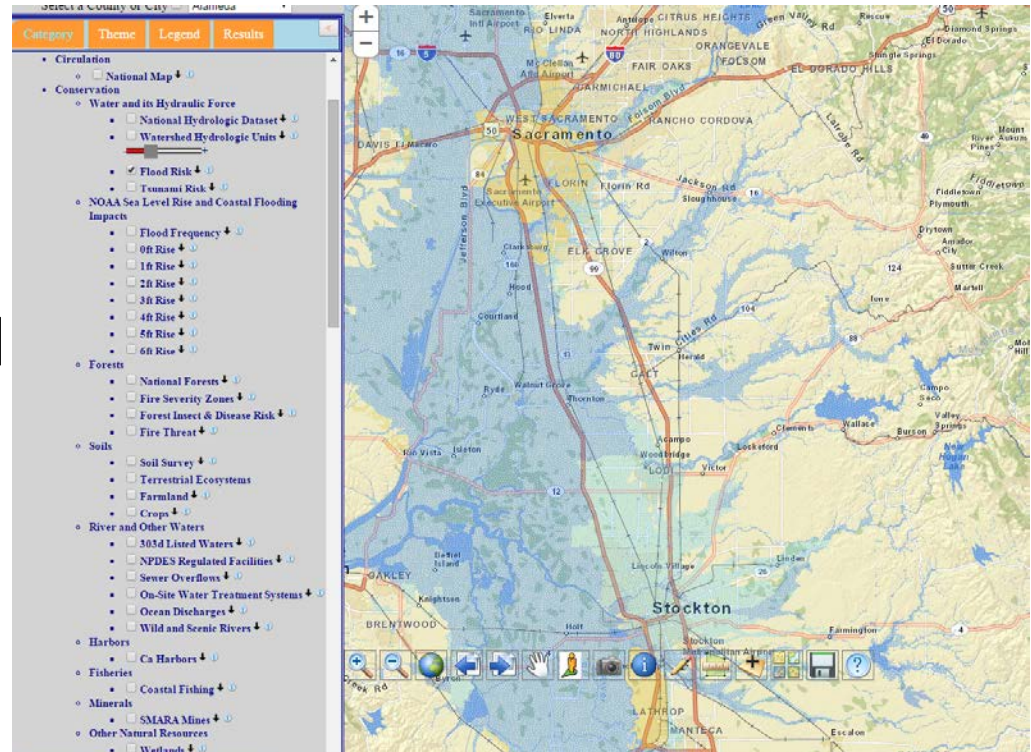
AB 2140 (2006) authorizes, local governments to integrate their LHMPs into the safety elements of their general plans. Integration is encouraged through a post-disaster financial incentive which authorizes the state to use available California Disaster Assistance Act funds to cover local shares of the 25% non-federal portion of grant-funded post-disaster projects.



General Plan Guidance

Flood Management and Resilience

The new mapping tool will also have layers of flood data information, coastal imagery, and additional layers of local data can be added in to paint a more complete picture for planning purposes.





General Plan Guidance

Next Steps for Draft Release



Next Steps

- Incorporate edits and comments from internal review
- Public comment and outreach
- Integration of comments and edits
- Public release and outreach
- Continued improvement of tool and website



Next Steps

- Questions?

www.opr.ca.gov

Sahar Shirazi

Governor's Office of Planning and Research

Sahar.shirazi@opr.ca.gov