

Flood Control 2.0

Restoring San Francisco Bayland Habitat through a New Vision for Flood Control Channel Design and Management



Project Update to BAFPA
August 20, 2015



Flood Control 2.0 Project

Problem Statements

Flood Control 2.0 Project

Problem Statements

- Flood capacity in some flood control channels is affected by excess sediment deposition

Flood Control 2.0 Project

Problem Statements

- Flood capacity in some flood control channels is affected by excess sediment deposition
- Sediment removal is costly and impacts habitat

Flood Control 2.0 Project

Problem Statements

- Flood capacity in some flood control channels is affected by excess sediment deposition
- Sediment removal is costly and impacts habitat
- Obtaining permits for sediment removal and other management activities is becoming increasingly difficult

Flood Control 2.0 Project

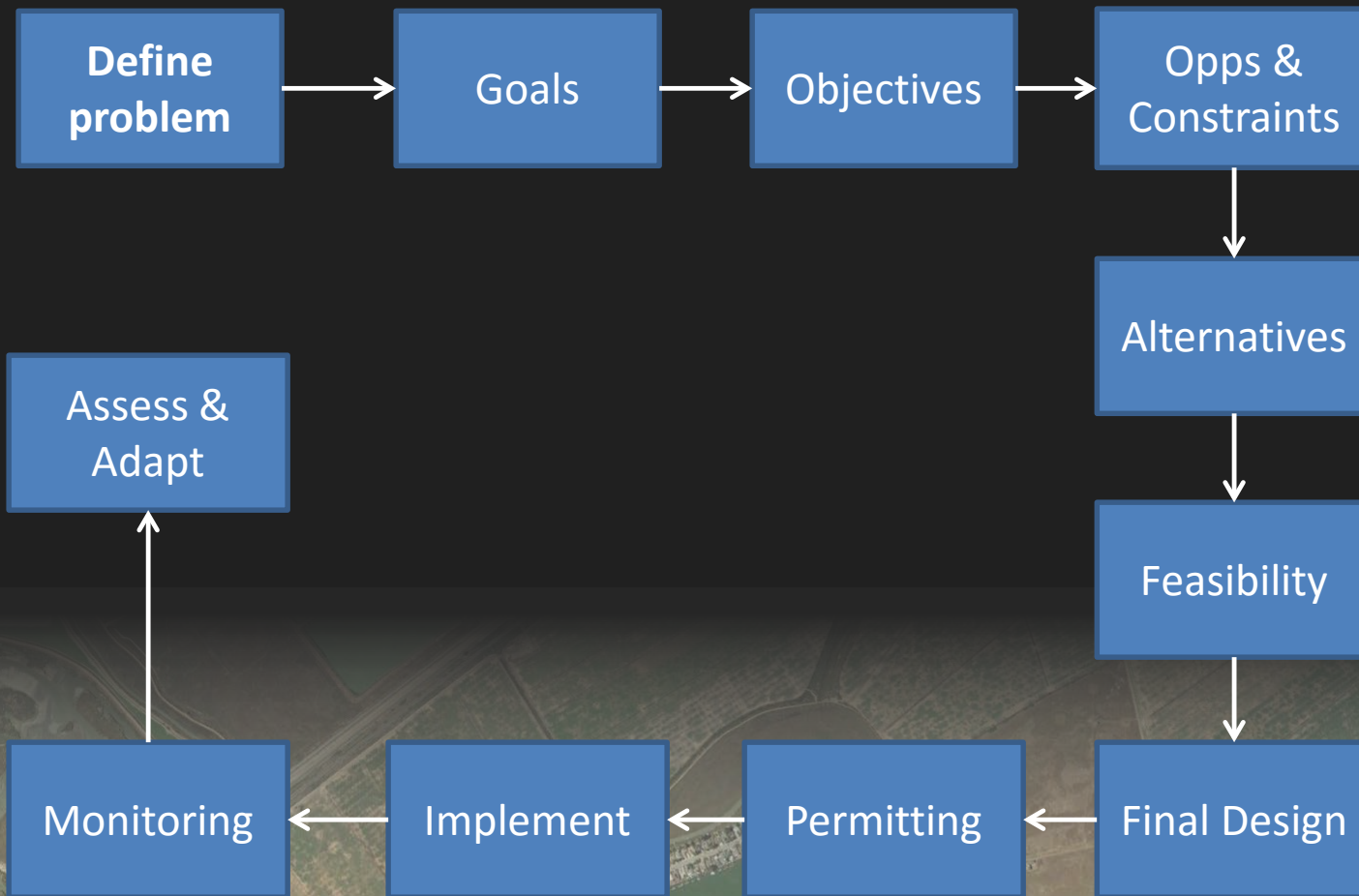
Problem Statements

- Flood capacity in some flood control channels is affected by excess sediment deposition
- Sediment removal is costly and impacts habitat
- Obtaining permits for sediment removal and other management activities is becoming increasingly difficult

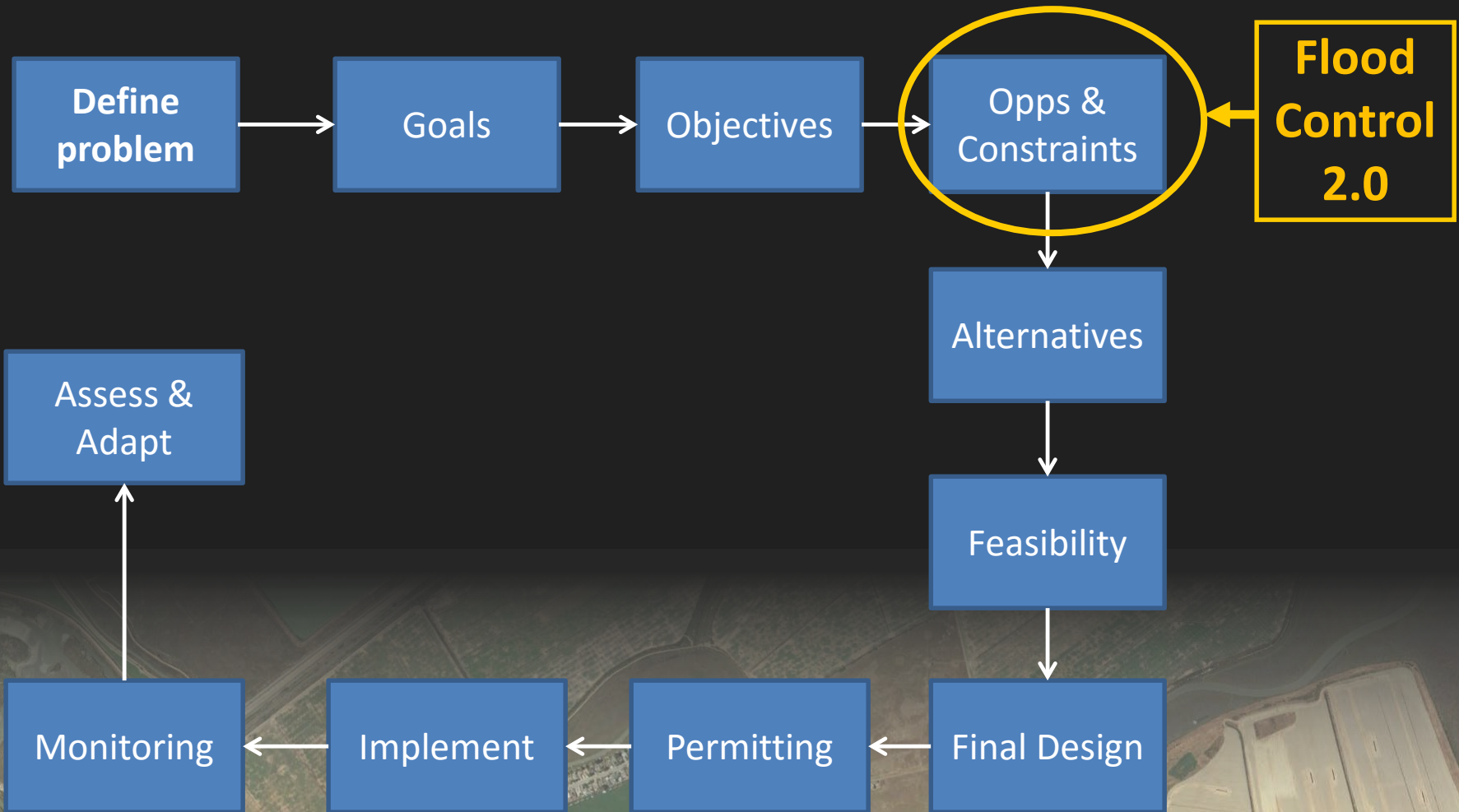
Project Goal

Develop *tools* and a *process* for helping integrate habitat restoration and creation elements into flood risk management at the Bay interface

FC Project Lifecycle (Adaptive Mgmt Framework)

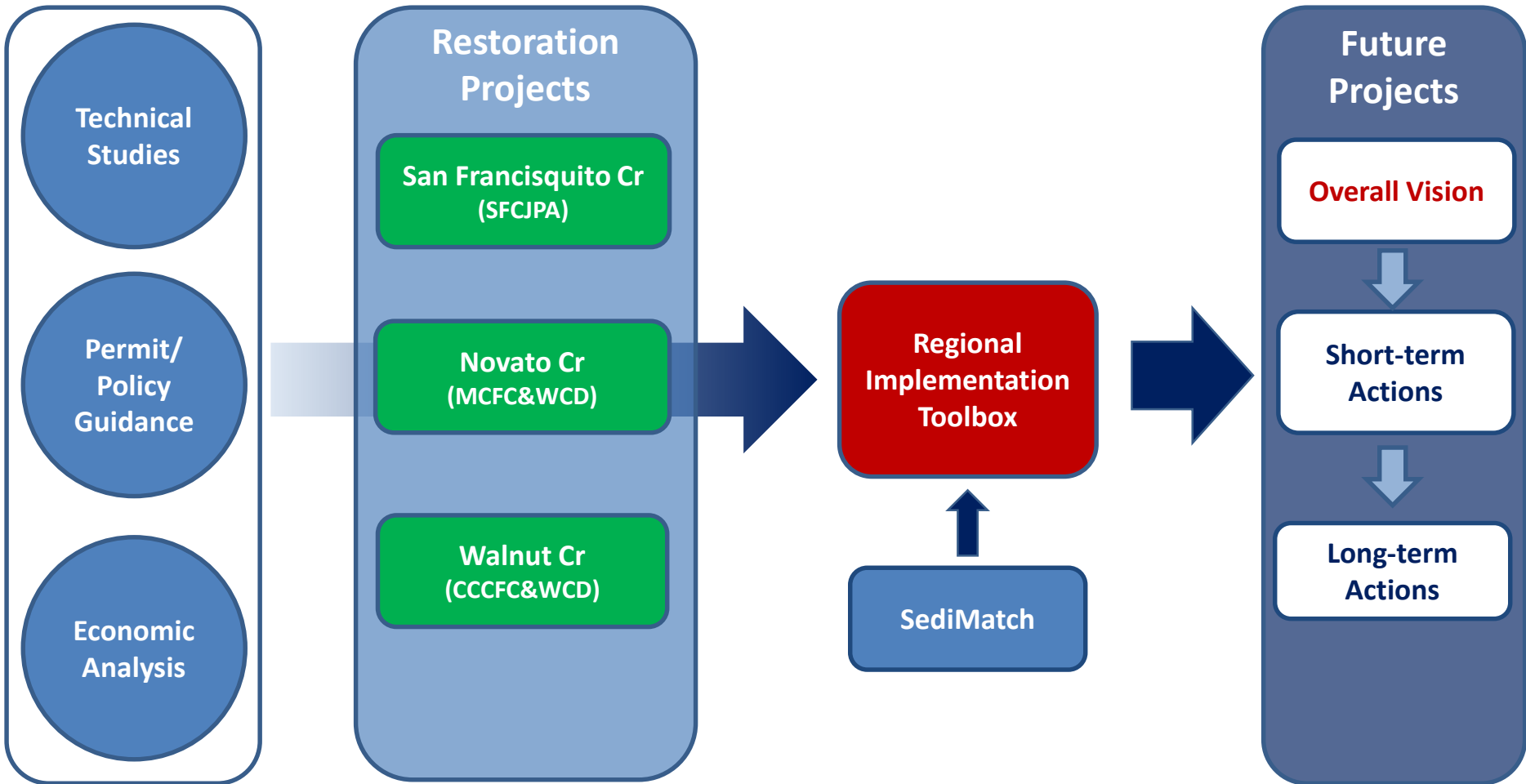


FC Project Lifecycle (Adaptive Mgmt Framework)



Flood Control 2.0

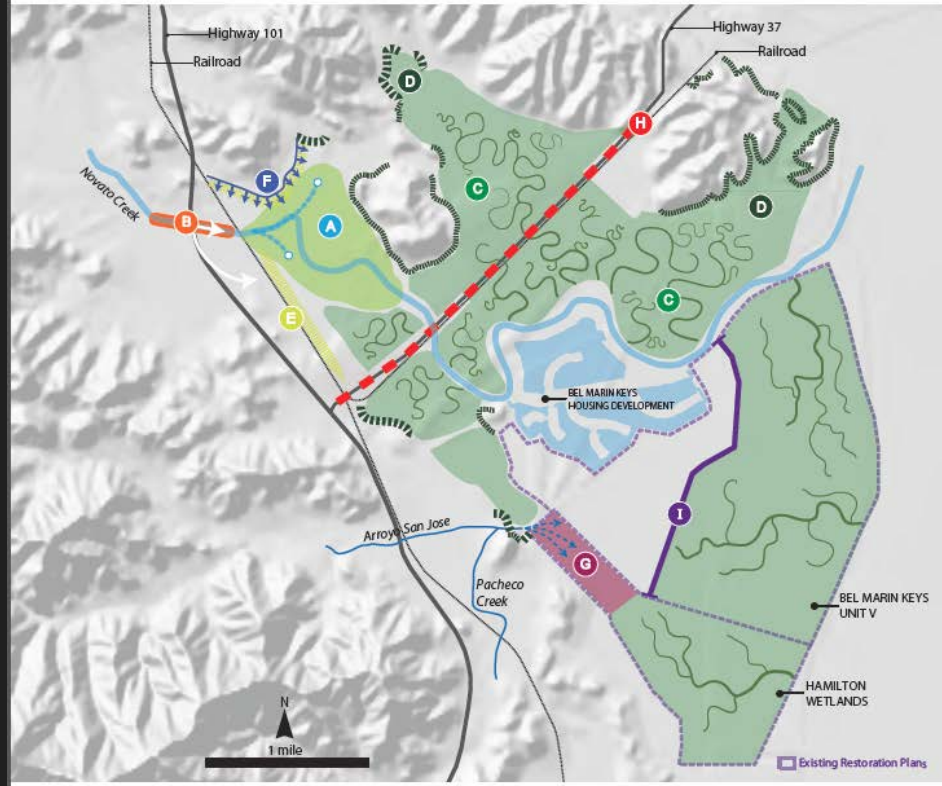
Project Overview



Developing Management Concepts

Lower Novato Cr Vision

NOVATO CREEK BAYLANDS LONG-TERM VISION



Please Note:

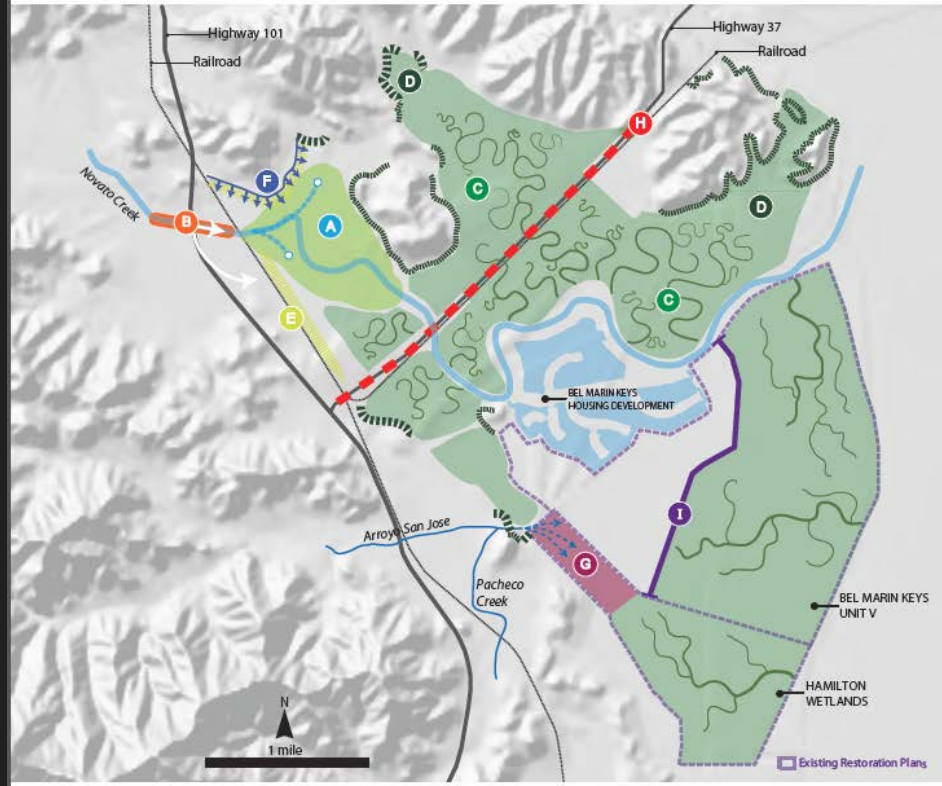
- Bel Marin Keys Unit V & Hamilton Wetlands have existing restoration plans. The anticipated restored tidal marsh shown on Bel Marin Keys Unit V & Hamilton Wetlands is illustrated from the State Coastal Conservancy's completed and proposed restoration plans. Please reference the State Coastal Conservancy's plans for additional site actions and associated habitats that are not shown.
- This visioning did not include any modifications to the Bel Marin Keys Housing Development.

Developing Management Concepts

Lower Novato Cr Vision

- Developed Vision w/ Marin Co and Science Advisors

NOVATO CREEK BAYLANDS LONG-TERM VISION



Please Note:

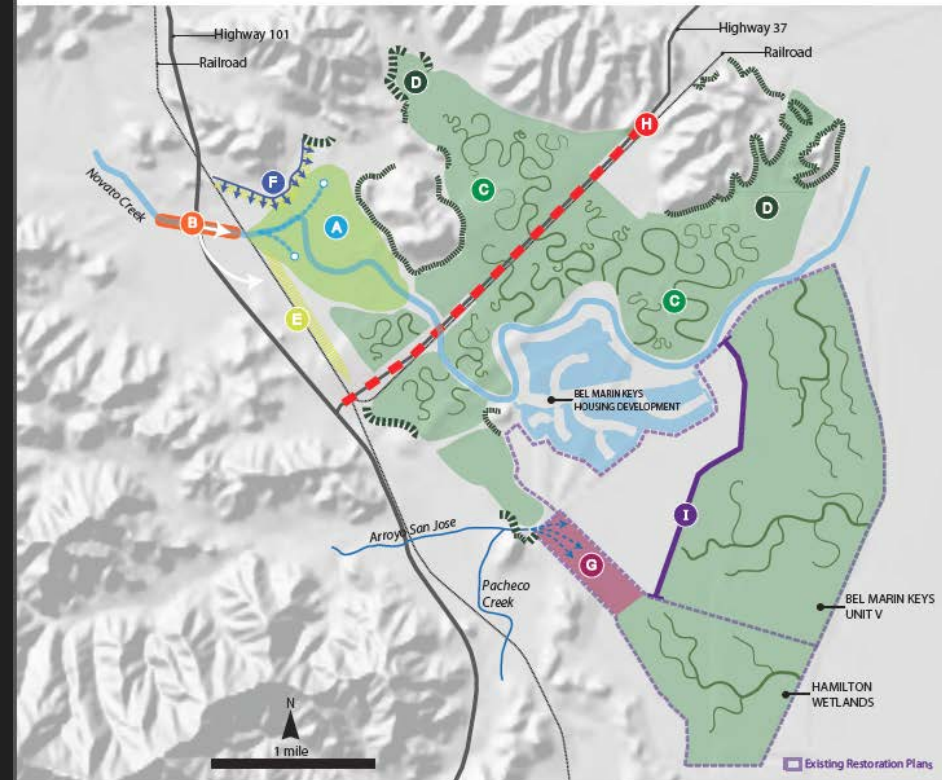
- Bel Marin Keys Unit V & Hamilton Wetlands have existing restoration plans. The anticipated restored tidal marsh shown on Bel Marin Keys Unit V & Hamilton Wetlands is illustrated from the State Coastal Conservancy's completed and proposed restoration plans. Please reference the State Coastal Conservancy's plans for additional site actions and associated habitats that are not shown.
- This visioning did not include any modifications to the Bel Marin Keys Housing Development.

Developing Management Concepts

Lower Novato Cr Vision

- Developed Vision w/ Marin Co and Science Advisors
- Focused on elements that could improve habitat and address flood risk
 - *Creek/Bayland reconnection*
 - *Removing channel constriction points*
 - *Beneficial sediment reuse*

NOVATO CREEK BAYLANDS LONG-TERM VISION



Please Note:

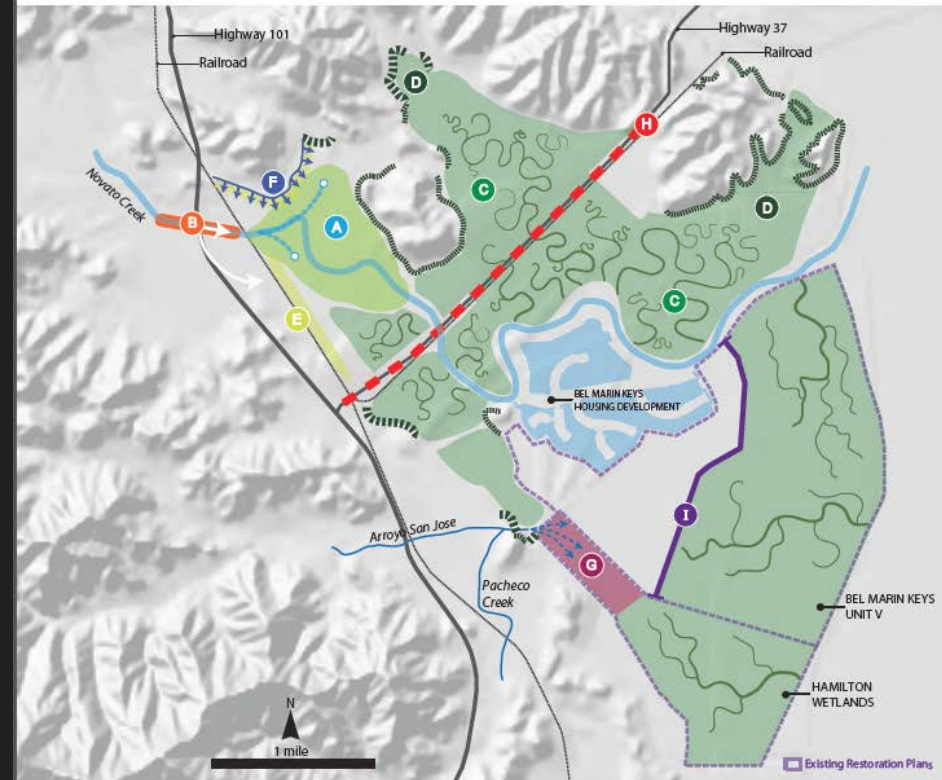
- Bel Marin Keys Unit V & Hamilton Wetlands have existing restoration plans. The anticipated restored tidal marsh shown on Bel Marin Keys Unit V & Hamilton Wetlands is illustrated from the State Coastal Conservancy's completed and proposed restoration plans. Please reference the State Coastal Conservancy's plans for additional site actions and associated habitats that are not shown.
- This visioning did not include any modifications to the Bel Marin Keys Housing Development.

Developing Management Concepts

Lower Novato Cr Vision

- Developed Vision w/ Marin Co and Science Advisors
- Focused on elements that could improve habitat and address flood risk
 - *Creek/Bayland reconnection*
 - *Removing channel constriction points*
 - *Beneficial sediment reuse*
- Elements are conceptual and based on opportunities & constraints, no feasibility assessment

NOVATO CREEK BAYLANDS LONG-TERM VISION

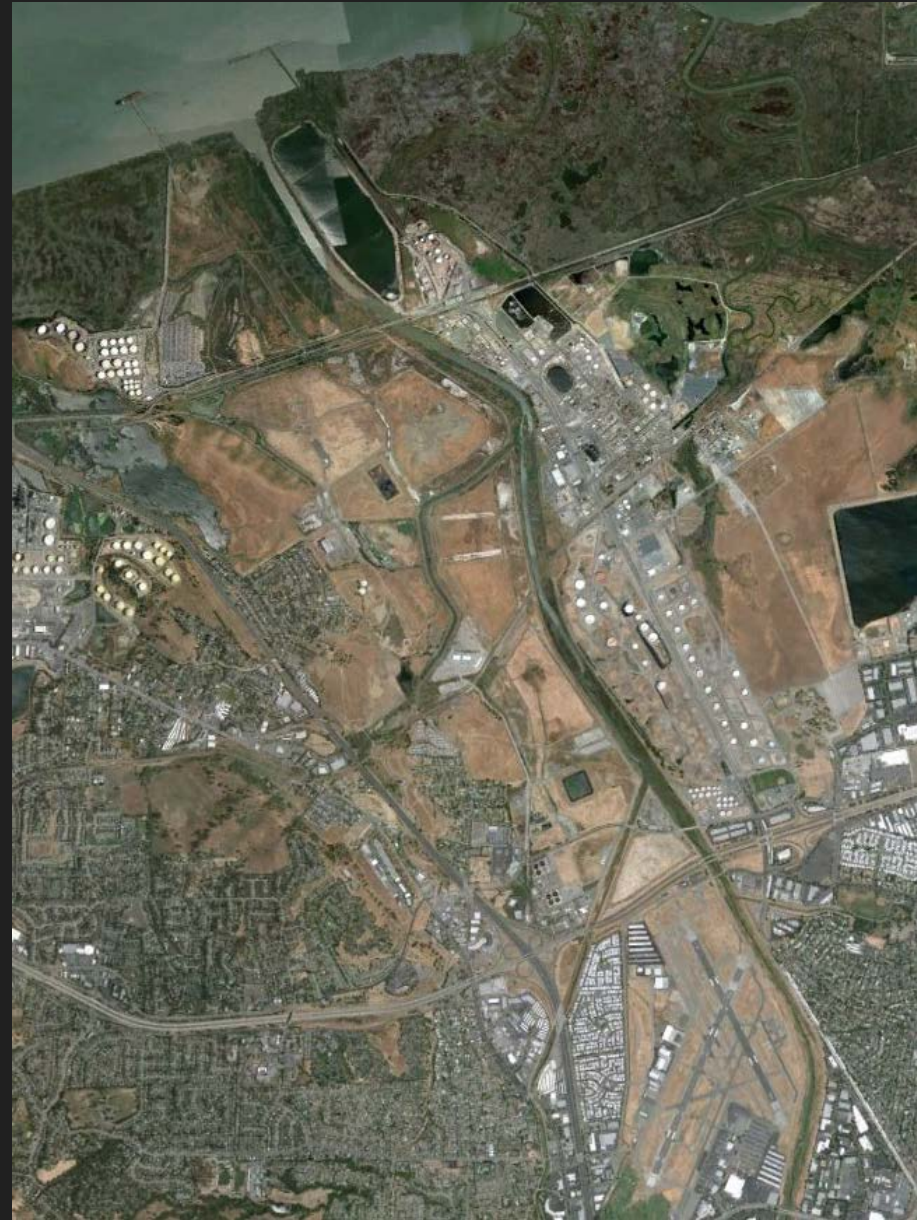


Please Note:

- Bel Marin Keys Unit V & Hamilton Wetlands have existing restoration plans. The anticipated restored tidal marsh shown on Bel Marin Keys Unit V & Hamilton Wetlands is illustrated from the State Coastal Conservancy's completed and proposed restoration plans. Please reference the State Coastal Conservancy's plans for additional site actions and associated habitats that are not shown.
- This visioning did not include any modifications to the Bel Marin Keys Housing Development.

Developing Management Concepts

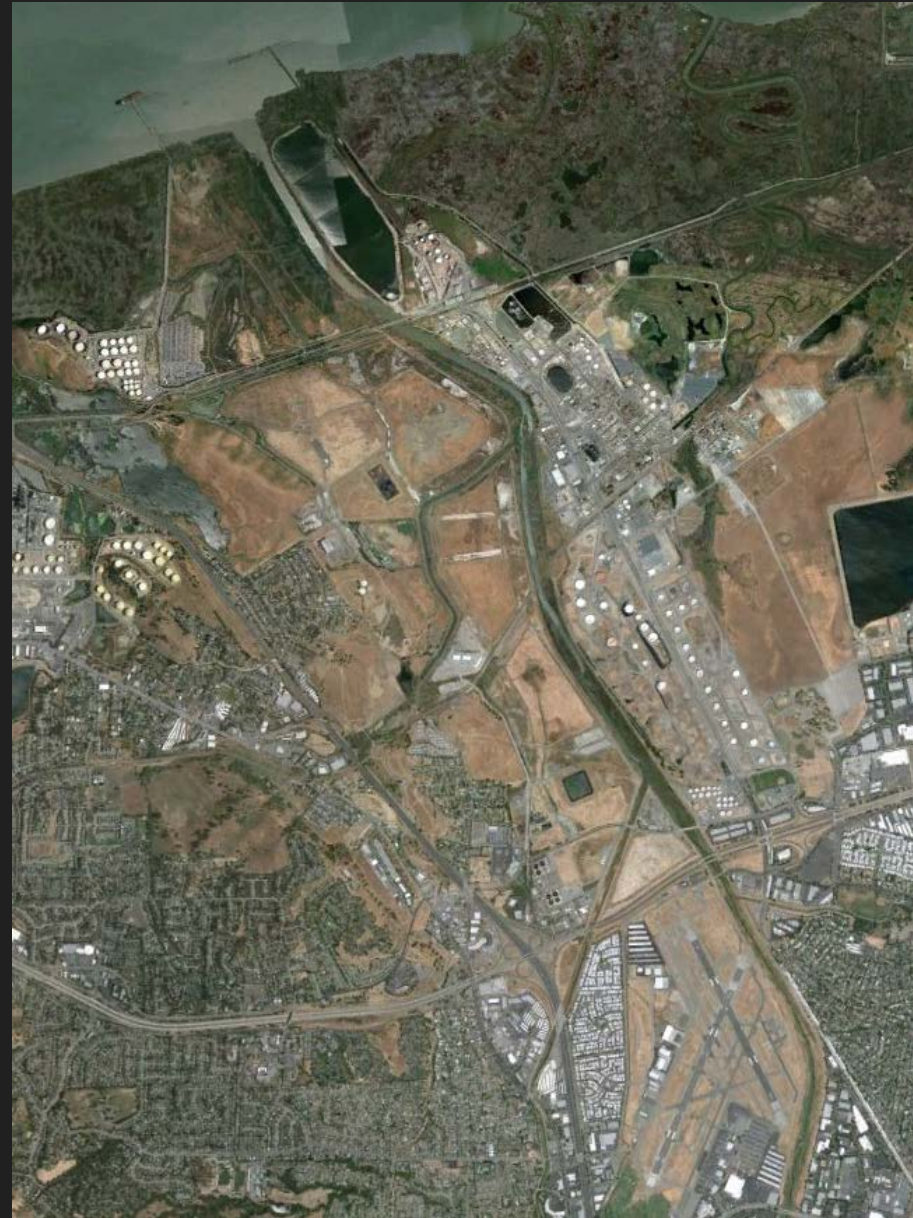
Lower Walnut Cr Vision



Developing Management Concepts

Lower Walnut Cr Vision

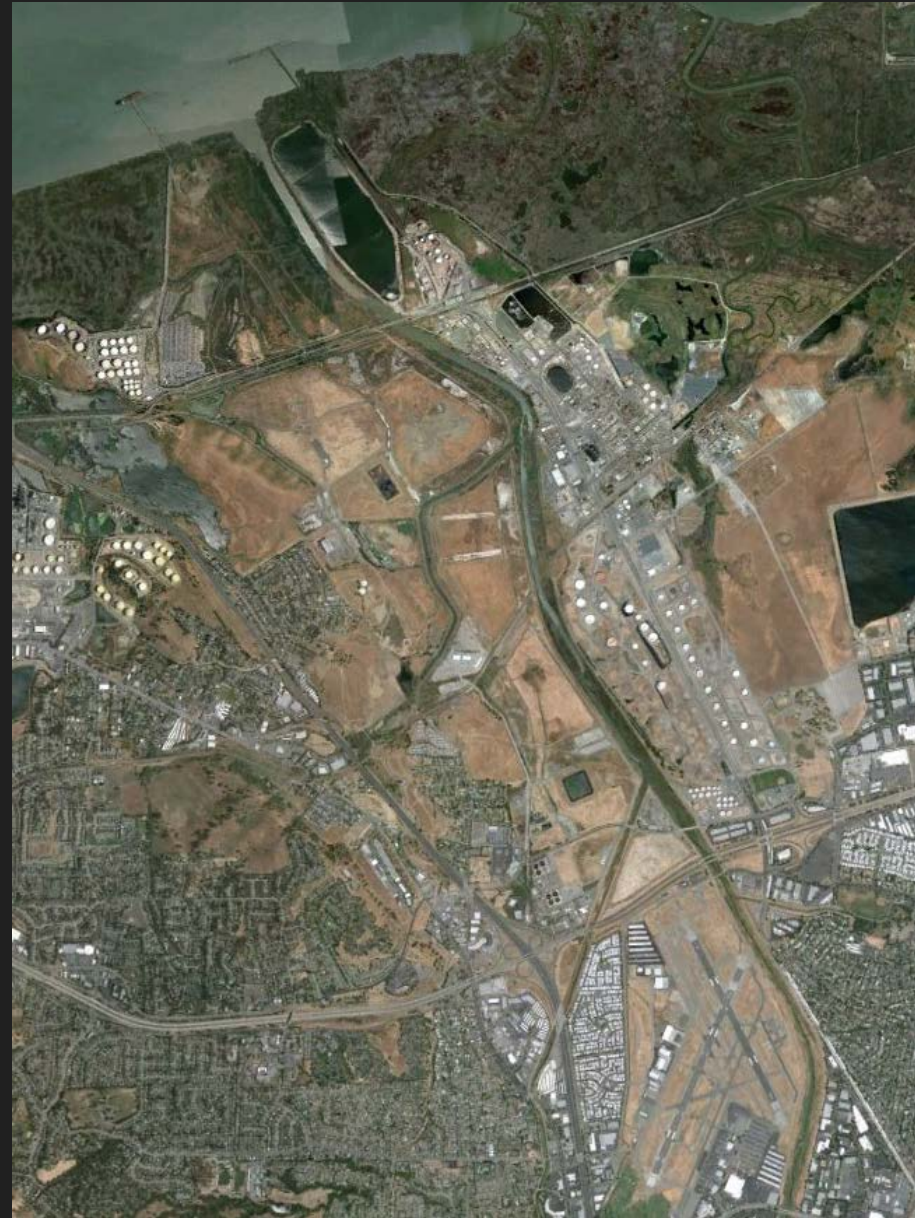
- Will be developing w/ Contra Costa Co, Science Advisors, and ESA (redesign alternatives)



Developing Management Concepts

Lower Walnut Cr Vision

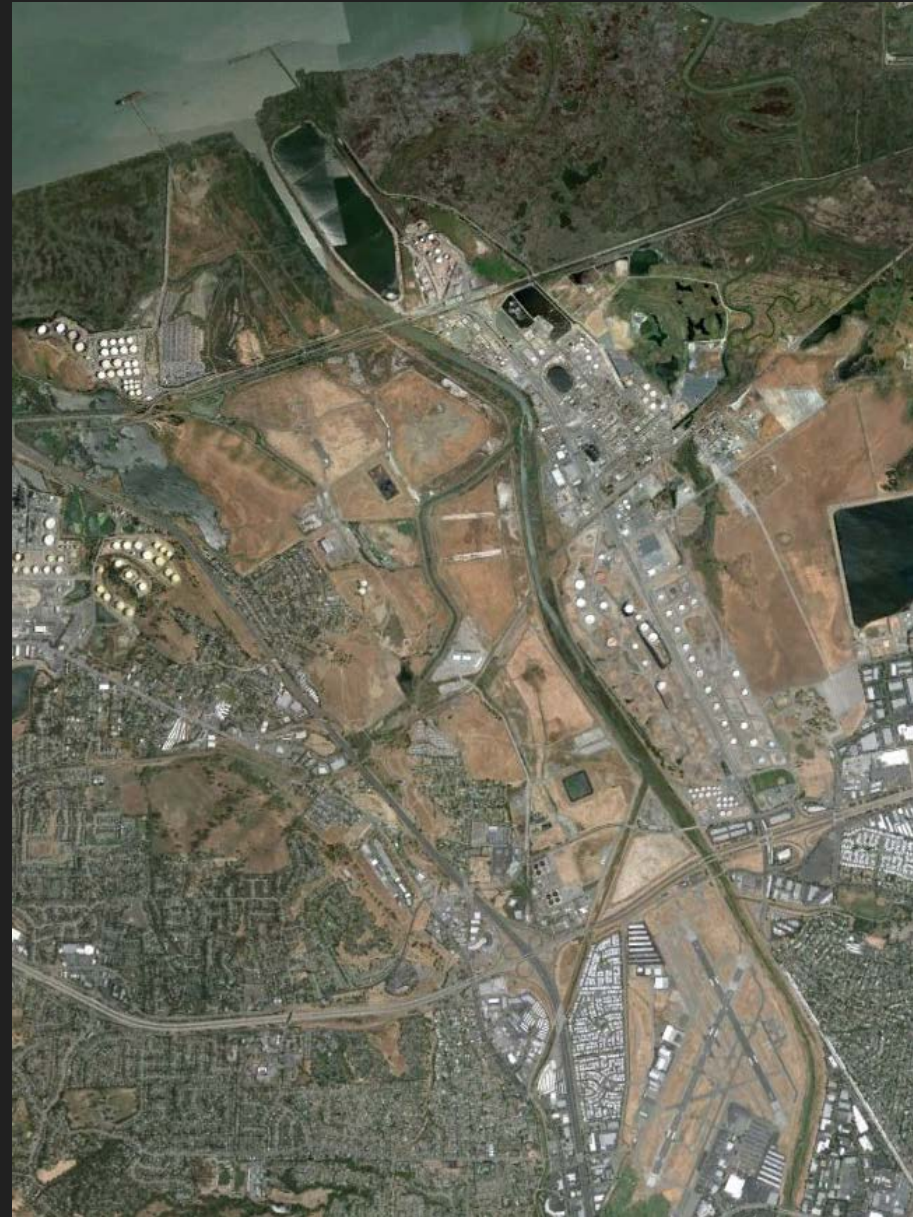
- Will be developing w/ Contra Costa Co, Science Advisors, and ESA (redesign alternatives)
- Will focus on elements that could improve habitat and address flood risk
 - *Creek/Bayland reconnection*
 - *Removing channel constriction points*
 - *Beneficial sediment reuse*



Developing Management Concepts

Lower Walnut Cr Vision

- Will be developing w/ Contra Costa Co, Science Advisors, and ESA (redesign alternatives)
- Will focus on elements that could improve habitat and address flood risk
 - *Creek/Bayland reconnection*
 - *Removing channel constriction points*
 - *Beneficial sediment reuse*
- Elements will be incorporated into ESA alternatives and feasibility assessments



Developing Management Concepts

Regional Framework



Developing Management Concepts

Regional Framework

- High level concepts aimed at integrating habitat improvement elements into flood risk management projects at the Bay interface
 - *Creek/Bayland reconnection*
 - *Removing channel constriction points*
 - *Beneficial sediment reuse*



Developing Management Concepts

Regional Framework

- High level concepts aimed at integrating habitat improvement elements into flood risk management projects at the Bay interface
 - *Creek/Bayland reconnection*
 - *Removing channel constriction points*
 - *Beneficial sediment reuse*
- Based on local opps & constraints assessment



Developing Management Concepts

Regional Framework

- High level concepts aimed at integrating habitat improvement elements into flood risk management projects at the Bay interface
 - *Creek/Bayland reconnection*
 - *Removing channel constriction points*
 - *Beneficial sediment reuse*
- Based on local opps & constraints assessment
- Will use info. from managers, Walnut Cr Vision, and other projects to inform the feasibility of concepts



QUESTIONS?

Thank You!

scottd@sfei.org

