



**Building Floodplain Resiliency through Ecosystem  
Restoration**

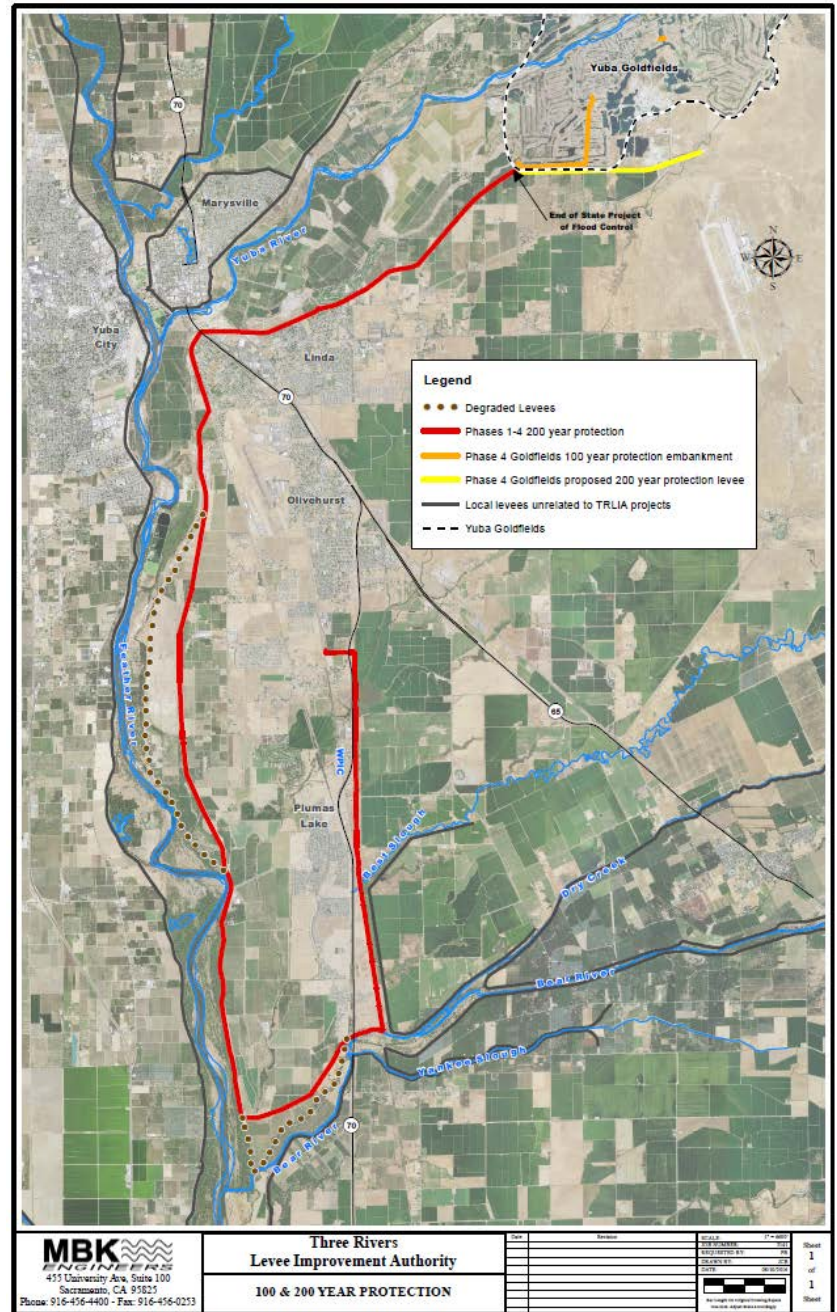
Paul G. Brunner P.E., Executive Director

**FMA: September 7, 2017**



## **TRLIA Work To Date**

- Improved 29 miles of Urban levees within State Plan of Flood Control (SPFC)
  - **State owned levees maintained by Reclamation District (RD) 784**
  - **FEMA 100-yr Accreditation done**
  - **ULDC 200-yr Compliance done this year**
- Goldfields currently outside SPFC
  - **100-yr project done**
  - **200-yr project underway**
- Estimated Cost
  - **Total: \$500 million**
  - **Cost share: State 65% +, Local 34%, < Federal 1% (FEMA)**







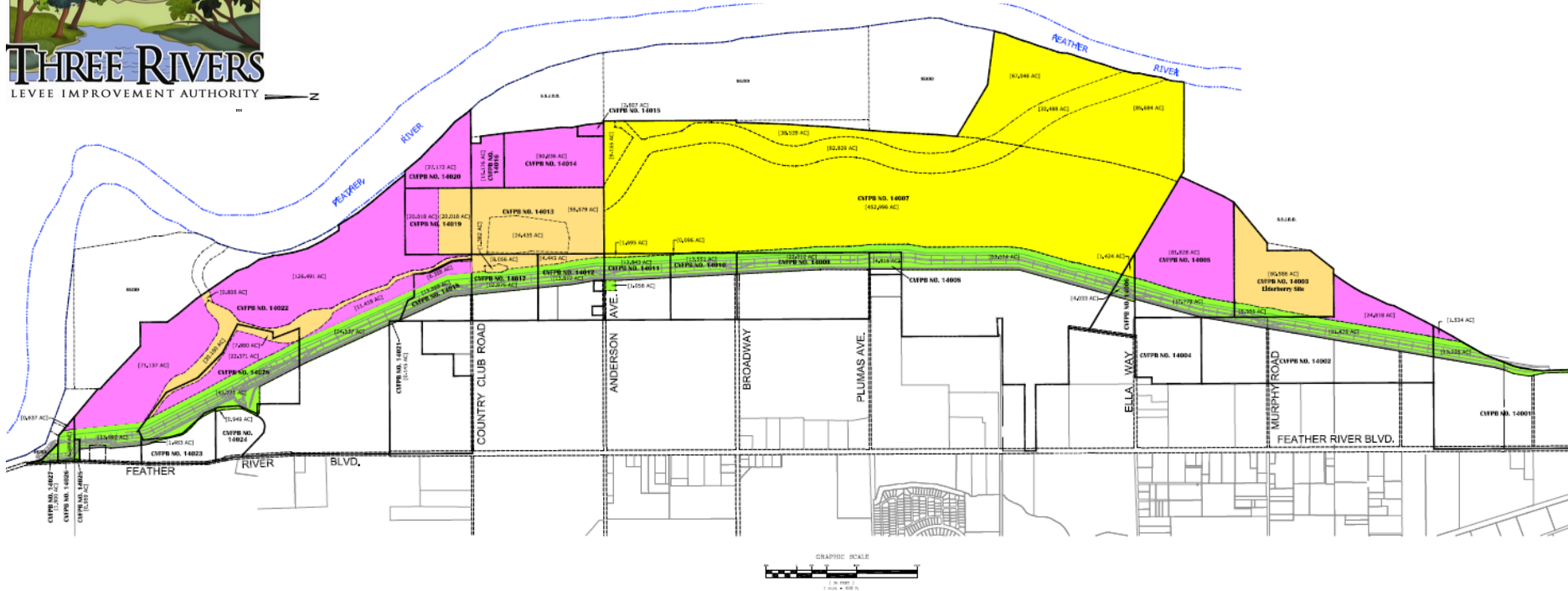
# 200-year Bear River Setback Levee Project

- Completed 2006/7
- Approx. 2 miles long
- Hydraulically designed for dense vegetation
- Lowers 200-yr flood stage upstream by 0.5 to 1 foot
- 339-Acre expanded floodway
- 639-Acre Ecological Preserve
- Unique ECO/Flood Conservation Easement
- Maintained by ECO third party for both habitat and Flood

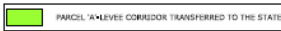
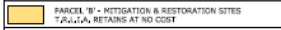






# 200-yr Feather Setback Levee



**LEGEND:**

	PARCEL 'A' LEVEE CORRIDOR TRANSFERRED TO THE STATE	311,099 AC.	NO FLOWAGE EASEMENT
	PARCEL 'B' - MITIGATION & RESTORATION SITES TRANSFERRED TO THE STATE, RETAINS AT NO COST	214,325 AC.	COMBINED CONSERVATION AND FLOWAGE EASEMENT
	PARCEL 'C' - AG LANDS TRANSFERRED TO THE STATE, RETAINS AT AGREED COST	461,561 AC.	FLOWAGE EASEMENT
	PARCEL 'D' - MITIGATION & RESTORATION SITES TRANSFERRED TO THE STATE	771,852 AC.	COMBINED CONSERVATION AND FLOWAGE EASEMENT

1,759,227 AC.

- **Completed 2010**

- **Approximately 5.7 miles long levee (green) - 1500-Acre expanded floodway**
- **Hydraulically designed for dense vegetation - Lowers 200-yr flood stage upstream by 2+ feet**
- **986 Acres of Mitigation and Restoration Habitat (Wetlands, Elderberry, Conservation Bank, and Cultural) – (yellow and brown)**
  - **Maintained by third party**
  - **Unique ECO/Flood Conservation Easements**
- **462 Acres of Agriculture (Orchards) – potential revenue source (purple)**