

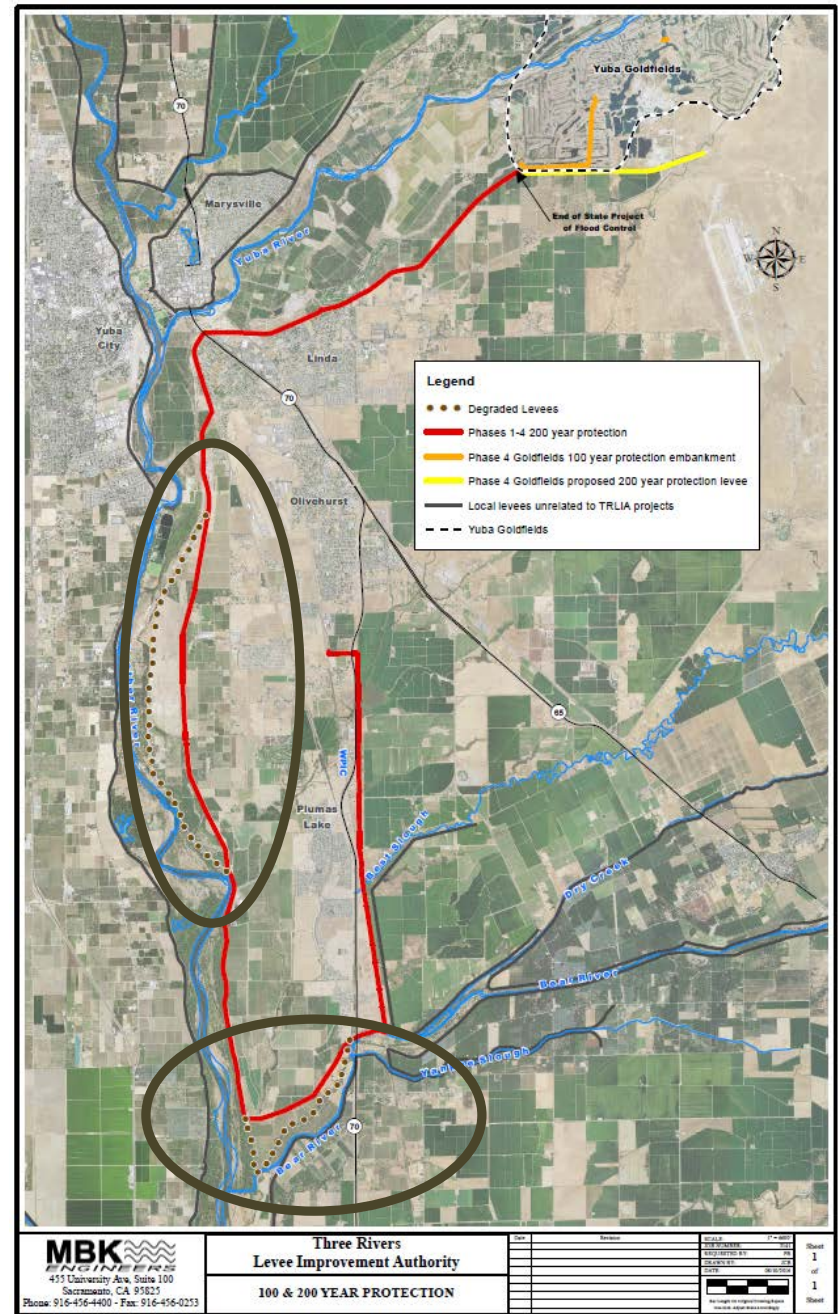


**Realizing Permitting Efficiencies for Flood Projects and
O&M through Programmatic Permitting**
Paul G. Brunner P.E., Executive Director

FMA: September 7, 2017



- Improved 29 miles of Urban levees within State Plan of Flood Control (SPFC)
- Built Two Major Setback Levees
 - Bear River – 339 Acre expanded Floodway; 2 miles long
 - Feather River – 1500 Acre expanded floodway; 6 miles long
- Manage/own Ecological Restoration and Mitigation Sites in Floodway
- Provide Flood Protection and Ecological Habitat together





Feather River Regional Permitting Program (FRRPP)

