

# Community Rating System

## Entering CRS Or Improving your Class



OMB No. 1660-0022  
Expires: March 31, 2020

National Flood Insurance Program  
Community Rating System

## Coordinator's Manual

*FIA-15/2017*



# Community Rating System

## CRS Contacts

Dave Arkens, ISO/CRS Technical Coordinator

(702) 354 - 4674 [dmarkens@iso.com](mailto:dmarkens@iso.com)

Constance Lake, ISO/CRS Specialist

Northern California and Northern Nevada

(307) 258 - 5661 [clake@iso.com](mailto:clake@iso.com)

KanDee Davis, ISO/CRS Specialist

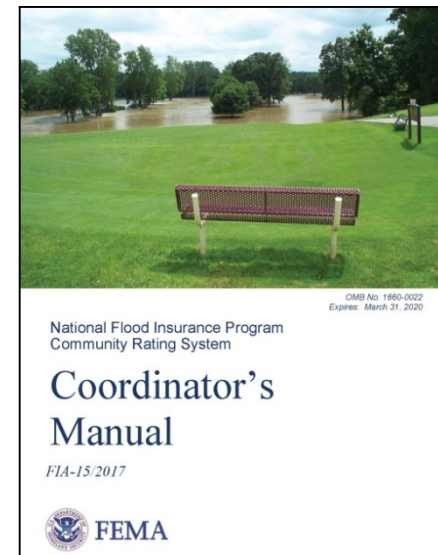
Southern California and Southern Nevada

(702) 209 - 9207 [kandee.davis@iso.com](mailto:kandee.davis@iso.com)

# Community Rating System

## Program Developments

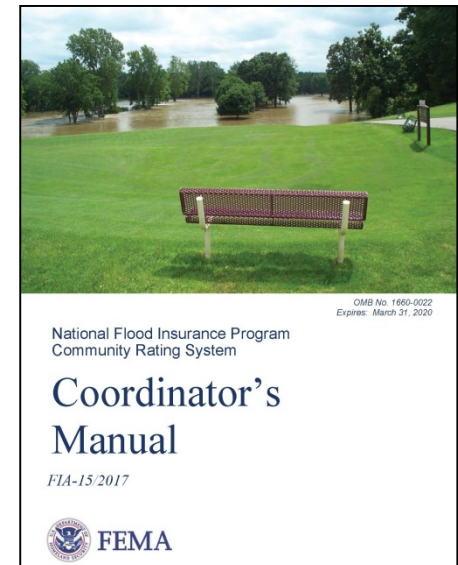
- 2017 CRS Coordinator's Manual (CRSResources.org)
- No California Recerts this year.
  - Next California Recert sent: June 15, 2018 and Due August 1, 2018
- Recerts will now be Centralized.



# Community Rating System

## New Communities to the CRS

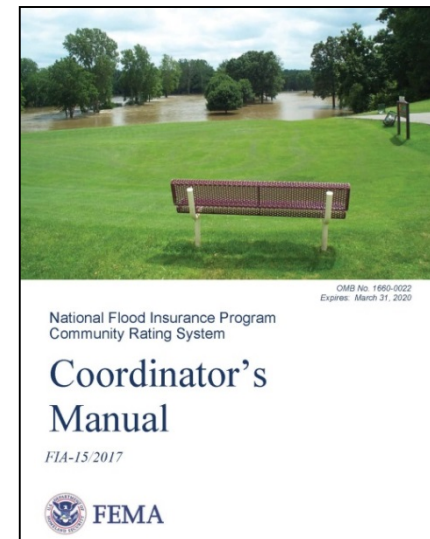
- ✓ Support from CEO or Governing Body
- ✓ CEO signs letter of Intent to Join CRS
- ✓ Must have an approved CAV
- ✓ Do you realistically have at least 500 points?
- ✓ Can your staff handle the work load?
- ✓ Begin working with your CRS Specialist



# Community Rating System

## Communities making a Modification

- ✓ Modification can be at almost any time.
- ✓ Work with your Specialist
- ✓ 1 Class improvement: Modification
- ✓ 2 Class improvement: New Verification/Cycle Visit
- ✓ Must have the points to make it to next class.
- ✓ Must meet any prerequisites in new class.
- ✓ Can your staff handle the extra work load.



# Community Rating System

## CRS Contacts

Dave Arkens, ISO/CRS Technical Coordinator

(702) 354 - 4674 [dmarkens@iso.com](mailto:dmarkens@iso.com)

Constance Lake, ISO/CRS Specialist

Northern California and Northern Nevada

(307) 258 - 5661 [clake@iso.com](mailto:clake@iso.com)

KanDee Davis, ISO/CRS Specialist

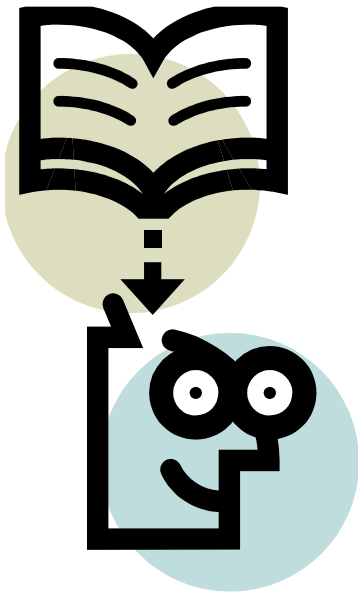
Southern California and Southern Nevada

(702) 209 - 9207 [kandee.davis@iso.com](mailto:kandee.davis@iso.com)

# Community Rating System

## Questions???

- ✓ Review your CRS Coordinator's Manual



- ✓ Contact your ISO Specialist