



I-275 Pinellas Corridor Moving Florida Forward

Justin Hall
Director of Transportation Development
FDOT District Seven

February 2024



CONSTRUCTION COMPLETE

- Cypress St/LaSalle St - FPID 447614-1

UNDER CONSTRUCTION

Gateway Expressway

- FPIDs 433880-1, 424501-2 (E7J46)

Howard Frankland Bridge - Section 3

- FPIDs 422904-2, 424904-4 (E7R10)

Tampa's Westshore Interchange - Section 4

- Causeway Seawall, Trail & SB I-275 - FPID 447534-1 (E7P42)
- Veterans Connection WB SR 60 - FPID 447107-1 (E7R39)
- Reo Street Widening - FPID 447615-1

Downtown Tampa Interchange - Section 6

- FPIDs 445057-1, 445056-1, 445056-2 (E7R70)

I-275 Capacity Improvements - Section 7

- Phase I - FPIDs 443770-1, 431821-2 (T7472)

I-75/Dr Martin Luther King, Jr. Blvd Interchange

- FPID 429251-1 (E7R26)

I-75/Big Bend Rd Interchange

- FPID 424513-3 (E7R21)

CONSTRUCTION TO BEGIN SOON

Tampa's Westshore Interchange - Section 4

- FPIDs 447107-2, 447107-3, 447107-4 (E7R30)

FUTURE PROJECTS

I-275 Pinellas Corridor - Section 2

- FPID 449109-1
- FPID 449109-2*
- FPID 424501-7*

Tampa's Westshore Interchange - Section 4*

- Veterans Connection EB SR 60 - FPID 447107-5

I-275 Corridor from Westshore to Downtown Tampa - Section 5*

- I-275 Mainline - FPID 434045-2
- I-275 Downtown Connection - FPID 434045-3
- I-275 Off-ramp to Scott St/Tampa St - FPID 451462-1

Downtown Tampa Interchange - Section 6*

- Scott St/Orange Ave - FPID 447616-1

I-275 North of Downtown Tampa - Section 7*

- Future Phases - FPIDs 431821-3, 431821-4

I-4 Corridor - Section 8*

- FPIDs 431746-3, 431746-4, 431746-5

I-75 North Corridor - Section 9*

- FPID 419235-6

I-75 South Corridor - Section 10*

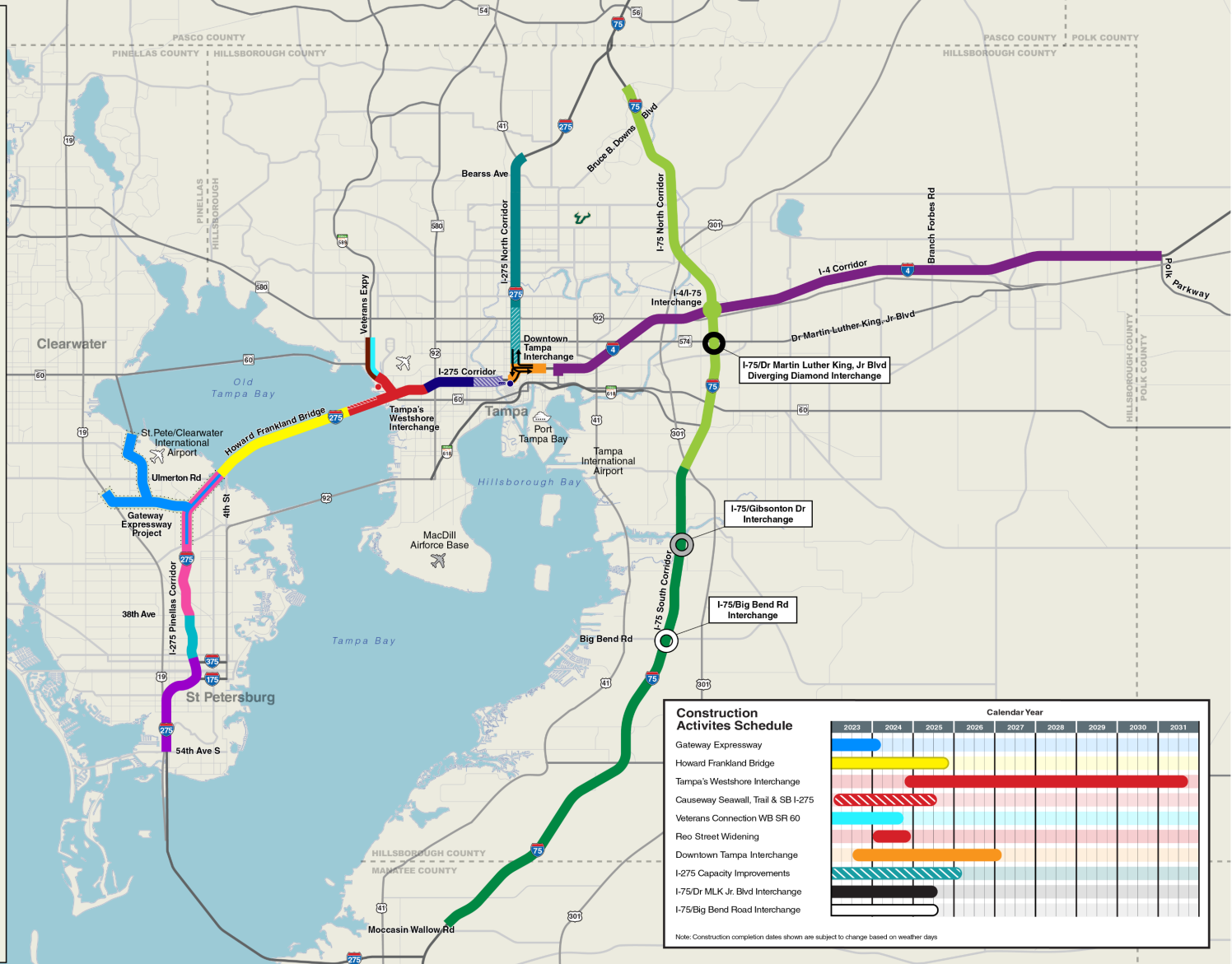
- FPIDs 419235-5, 419235-7

I-75/Gibsonton Dr Interchange

- FPID 437650-2

* Not currently funded for construction

Updated 01/30/2024



3 Construction Segments along I-275 Corridor

Moving Florida Forward Project (FPID 449109-1)

Length: 7.5 miles
 Design is currently underway
 Letting: March 2025
 Construction anticipated to begin in summer 2025
Construction Estimate: \$340 Million

FPID 449109-2

Length: 2 miles
Construction Estimate: \$146 Million
 Anticipated letting: February 2027
 Not currently funded for construction

FPID 424501-7

Length: 4.5 Miles
Construction Estimate: \$111 Million
 Letting: TBD
 Not currently funded for construction



- Widen I-275 approximately 7.5 miles
- Add two tolled express lanes in each direction from 38th Avenue N to south of Gandy Boulevard
- Add one additional tolled express lane in each direction from south of Gandy Boulevard to 4th Street N. (for a total of two)
- Interchange improvements at:
 - 38th Ave N
 - 54th Ave N.
 - SR 694 (Gandy Blvd.)
 - SR 686 (Roosevelt Blvd.)
- Construct a new multi-use trail along Ulmerton Road from I-275 to Feather Sound Drive (FPID 444243-1)
- Roadway and trail improvements will tie into the Gateway Expressway and Howard Frankland Bridge projects



- Design-Bid-Build procurement
- Cost estimate: ~\$340 Million (as of Oct. 2023)
- Schedule
 - ROW acquisition complete
 - Permit coordination is ongoing – Anticipated Fall 2024
 - Letting – March 26, 2025
 - Estimated construction duration – approximately 5 years
 - SIMR approval pending PD&E RE-Evaluation – expected Summer 2024

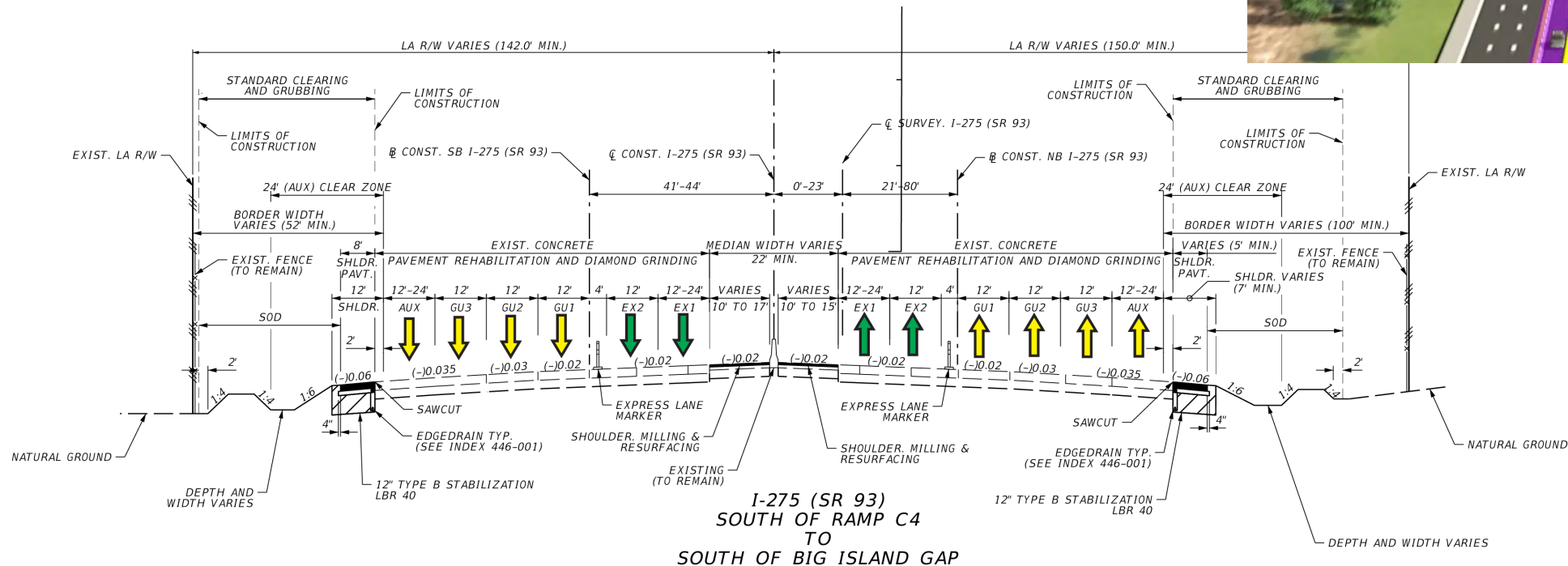
Fiscal Year

Task Name	Duration (Calendar Days)	Start	Finish	2025				2026				2027				2028				2029				2030			
				Q1	Q2	Q3	Q4	Q1	Q2	Q3	Q4	Q1	Q2	Q3	Q4	Q1	Q2	Q3	Q4	Q1	Q2	Q3	Q4	Q1	Q2	Q3	Q4
Tampa Bay Next Program - Section 2	2006 days	Fri 11/8/24	Mon 5/6/30																								
449109-1 SECTION 2 - I-275 from 38th Ave N to 4th St N (DBB)	2006 days	Fri 11/8/24	Mon 5/6/30																								
FIRST MAIL	1 day	Fri 11/8/24	Fri 11/8/24																								
SECOND MAIL	1 day	Mon 12/9/24	Mon 12/9/24																								
D-B-B PROCUREMENT (60 Day Ad)	62 days	Fri 1/24/25	Wed 3/26/25																								
CONSTRUCTION	1827 days	Tue 5/6/25	Mon 5/6/30																								

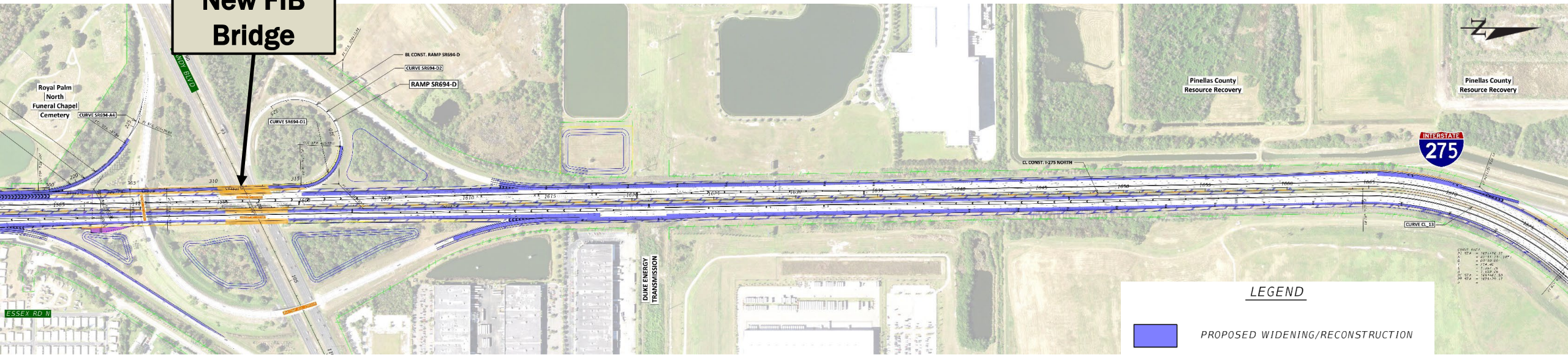


Roadway

- Expand I-275 from 1 to 2 Express Lanes in each direction
- Outside widening to accommodate 2nd EL in each direction on the inside



New FIB Bridge

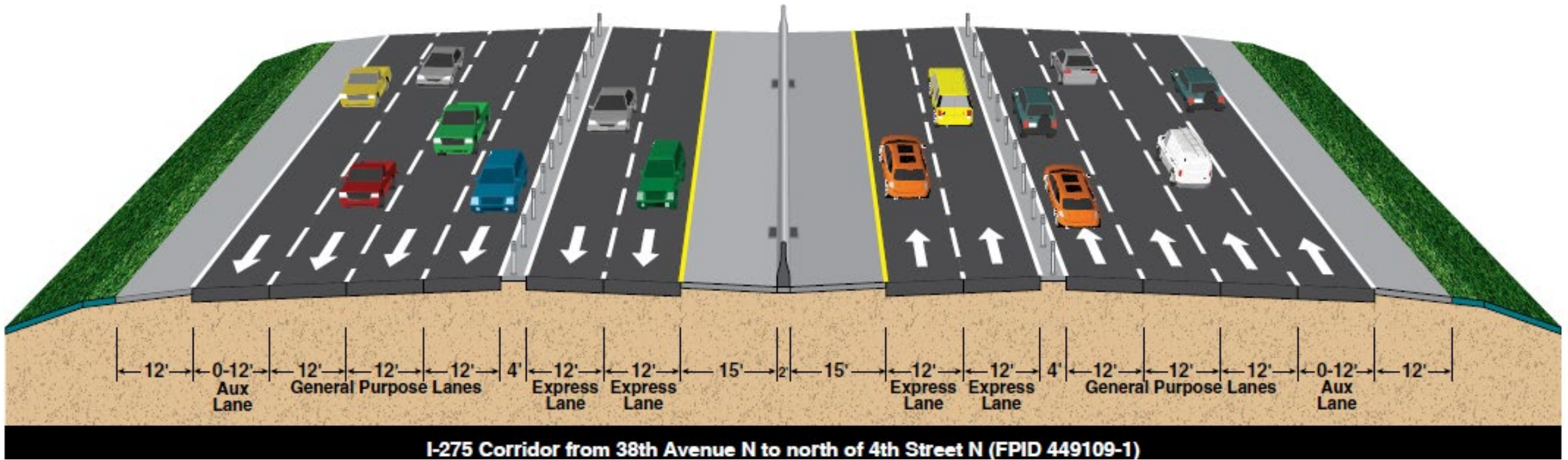


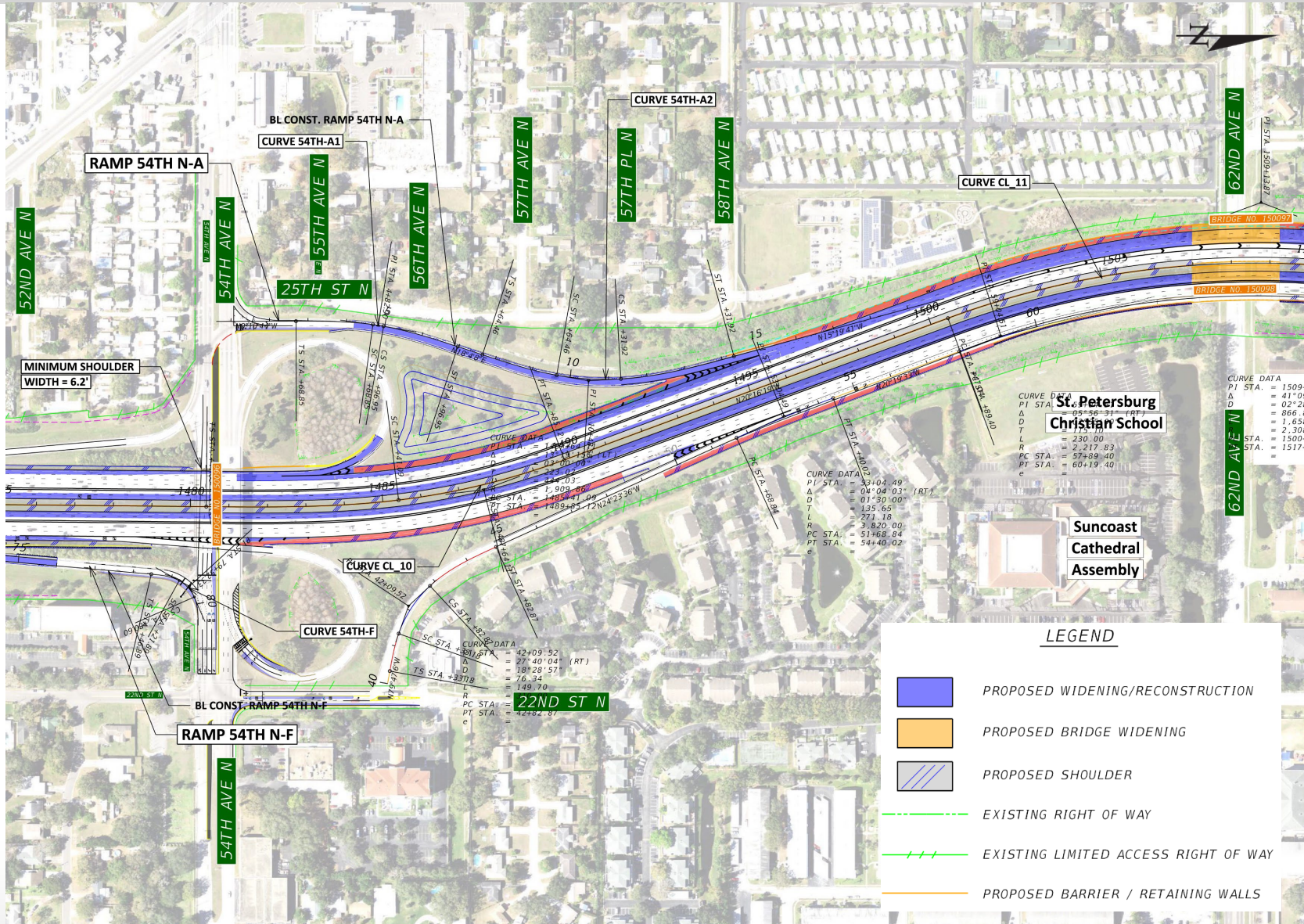
LEGEND

- PROPOSED WIDENING/RECONSTRUCTION
- PROPOSED BRIDGE WIDENING
- PROPOSED SHOULDER
- EXISTING RIGHT OF WAY
- EXISTING LIMITED ACCESS RIGHT OF WAY
- PROPOSED BARRIER / RETAINING WALLS

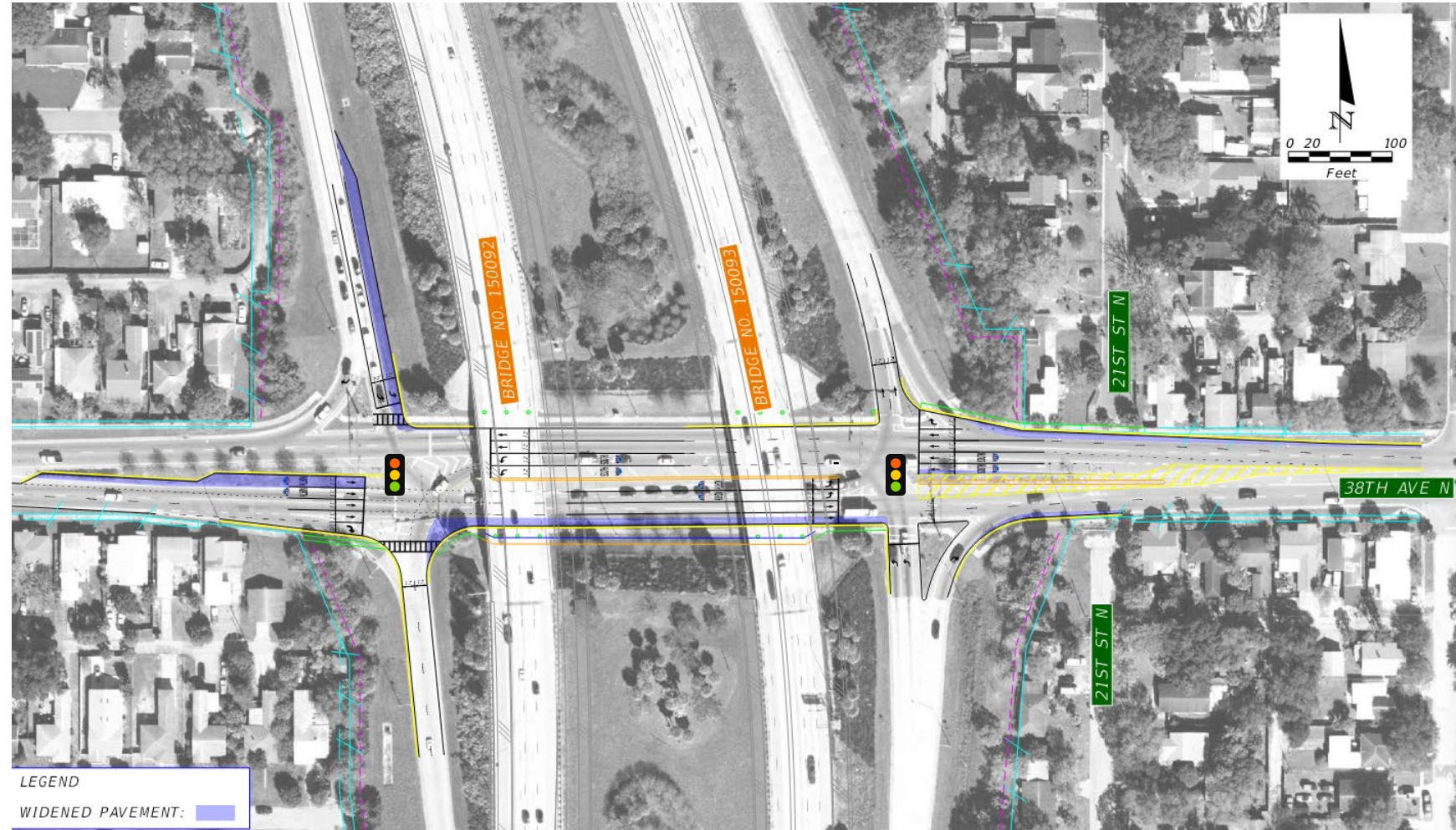
Preliminary Quantities

Concrete Widening	373,000 SY
Concrete Pavement Rehab	18,300 CY
Asphalt Pavement	48,000 Tons
Embankment	236,000 CY

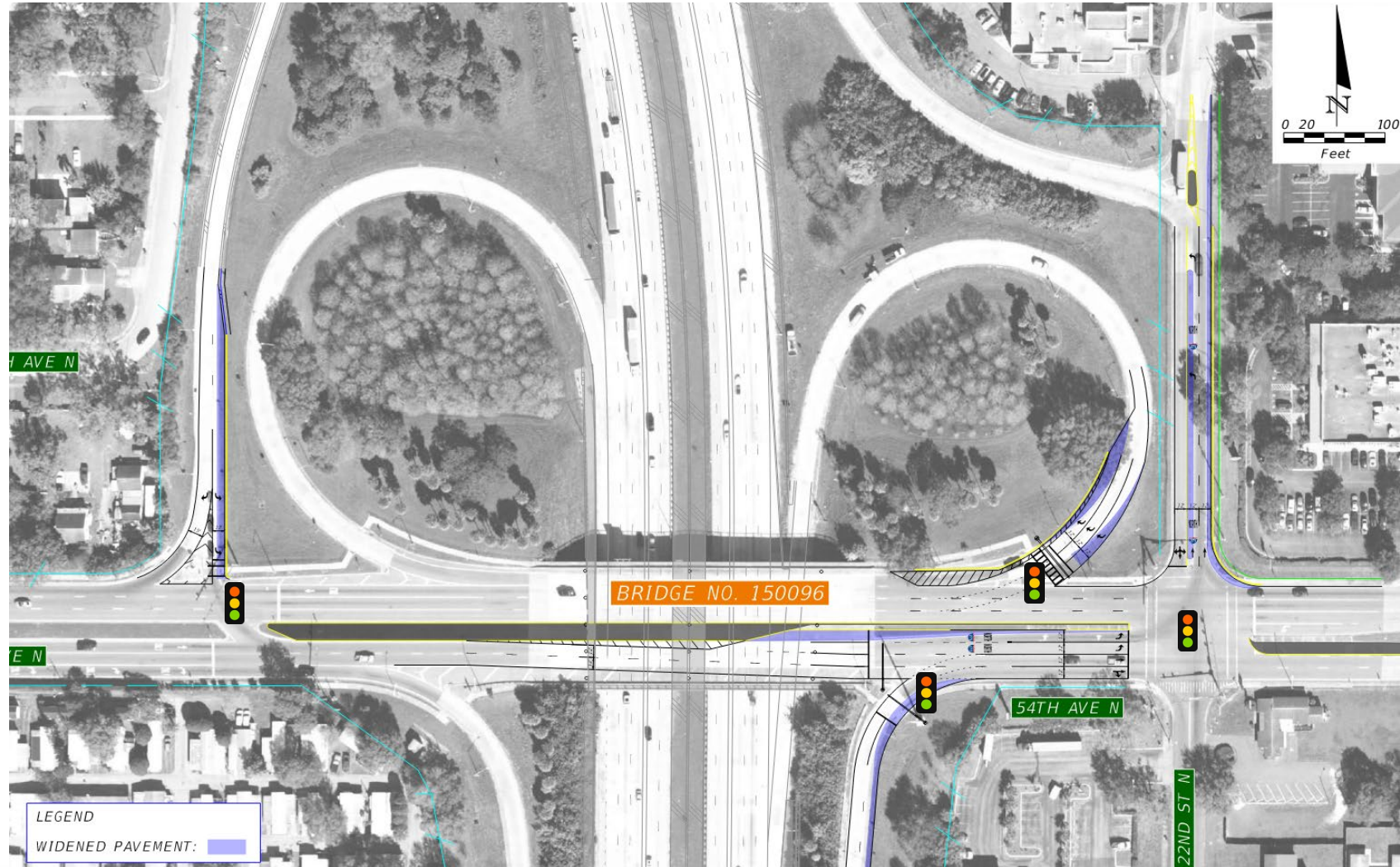




- 2 new signals
- Added 2nd left turn lanes for SB exit to EB 38th Ave
- Added 2nd left turn lane from EB 38th Ave to NB I-275
- Underpass improvements to accommodate wider sidewalks



- 4 new signals
- SB exit ramp – new left turn lane
- NB exit ramp to WB 54th Ave to be signalized triple right turn
- NB I-275 to EB 54th Ave to be signalized dual right turn
- EB 54th Ave to 22nd on ramp to NB I-275 dual left turn to access interstate



Structures

Preliminary Quantities

Bridge Widening	8
1 Steel Girder (SB I-275 at 38th Ave N)	10,200 SF
7 FIB	60,500 SF
New Bridge (FIB) (SB I-275 on ramp from WB Gandy Blvd)	1
New Bridge Decking	8,800 SF
Retaining Wall	113,000 SF
Temporary Sheet Pile Wall	800,000 SF
Permanent Sheet Pile Wall	5,000 SF

Preliminary Quantities

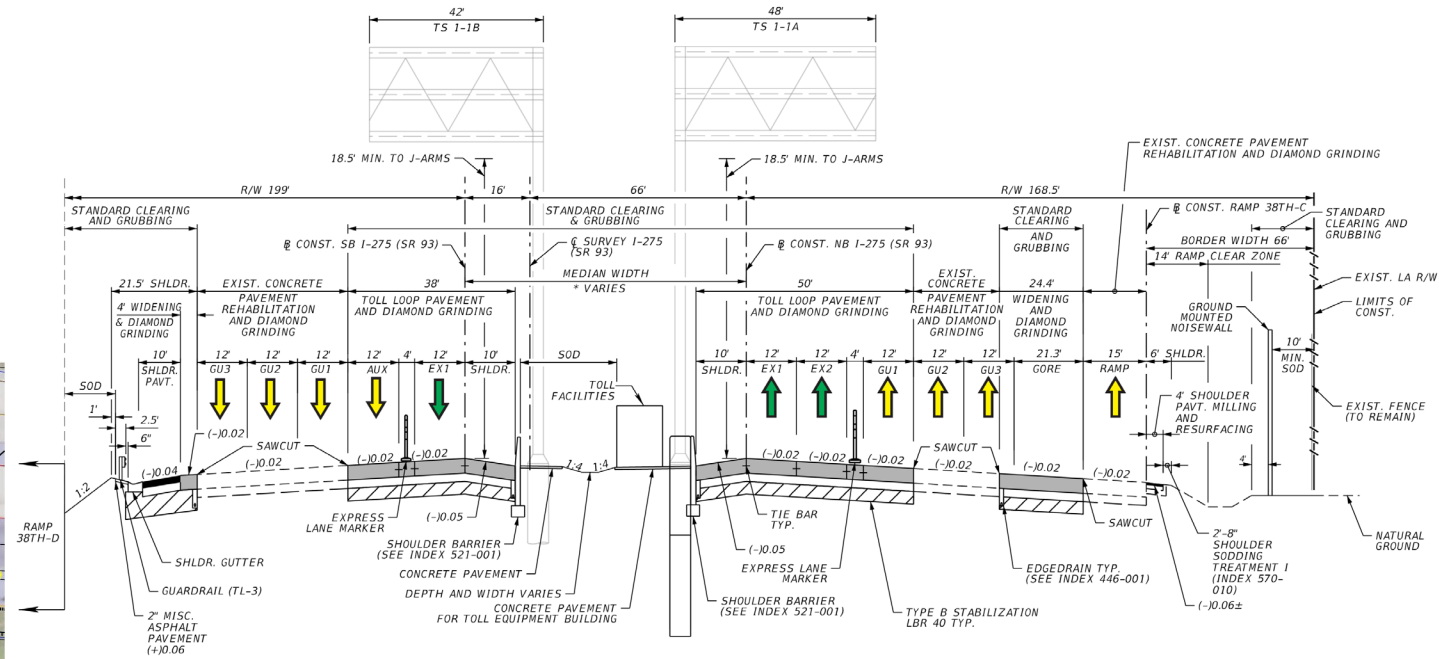
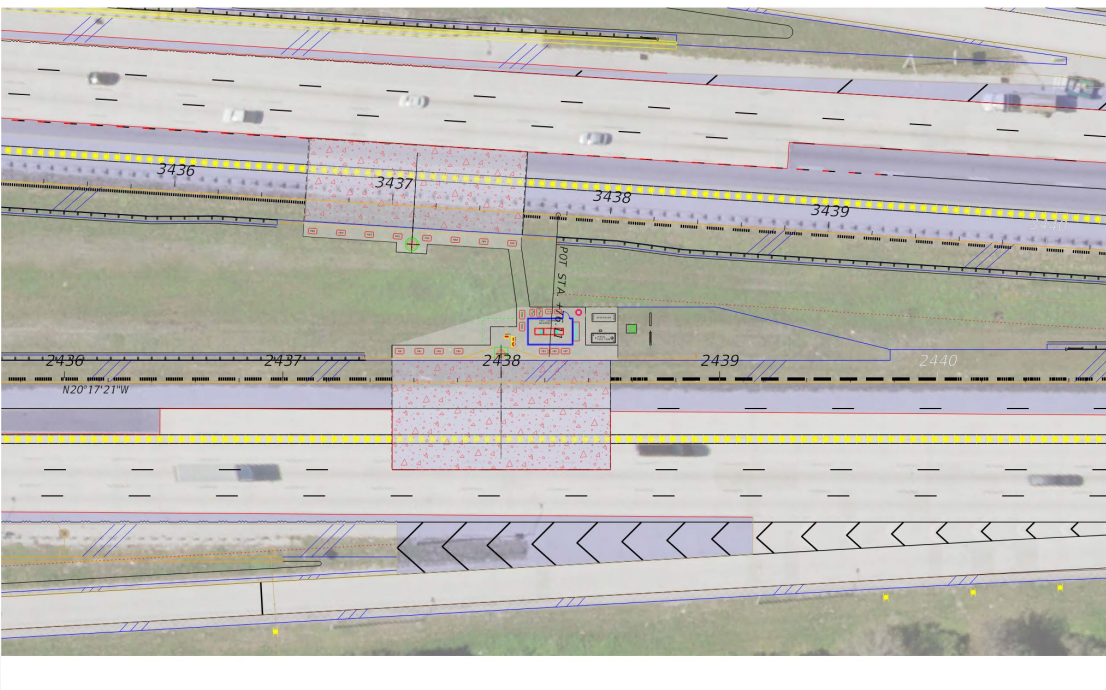
ROW Shoulder Noise Barrier	336,600 SF
8' & 14' Shoulder Noise Barrier	8,800 LF
Bridge Mounted Noise Barrier	900 LF



Existing bridge at 62nd Ave N looking West

Tolling, Coordination and Other Project Elements

- 3 new toll sites
- 1 modified toll site
- 1 toll site to be removed



- Ongoing coordination with Gateway Expressway project scheduled to open in 2024
- Segment of Gateway proper will be worked in to accommodate new tolled express lane
- FTE and SunGuide coordination on I-275 Express Lanes north of Gandy Boulevard and potential impacts to accommodate 449109-1 construction activities
- Anticipate modified ingress points and shifts for TTCP
- Coordination with HFB on tolling implementation, ingress/egress modifications and tie ins

Preliminary Quantities

Fiber Optic Cable	133,500 LF (144 ct)
DMS Signs	16
CCTV	42
Back up Generators	9
Wrong Way Detection Systems	10
Connect and Automated Vehicle (CAV) Roadside Units (RSU)	23
Microwave Vehicle Detection System (MVDS)	36
Road Weather Info System (RWIS)	2
Equipment Shelters	40
Bus on Shoulder Ramp Signals	4

- Drainage
 - 1 off site pond (N of Gandy)
 - 9 infield ponds
 - Linear ponds



Thank you

Justin Hall
Director of Transportation Development
FDOT District Seven