

First Coast Expressway

An aerial perspective of a long, multi-lane bridge spanning a body of water. The bridge features multiple lanes for traffic, with cars and a cyclist visible. A speedboat is moving across the water to the left of the bridge. The bridge is supported by numerous concrete piers. The sky is clear and blue.

**FLORIDA DEPARTMENT OF
TRANSPORTATION, DISTRICT 2**

Taylor Byrd, P.E.
Construction Senior Project Manager

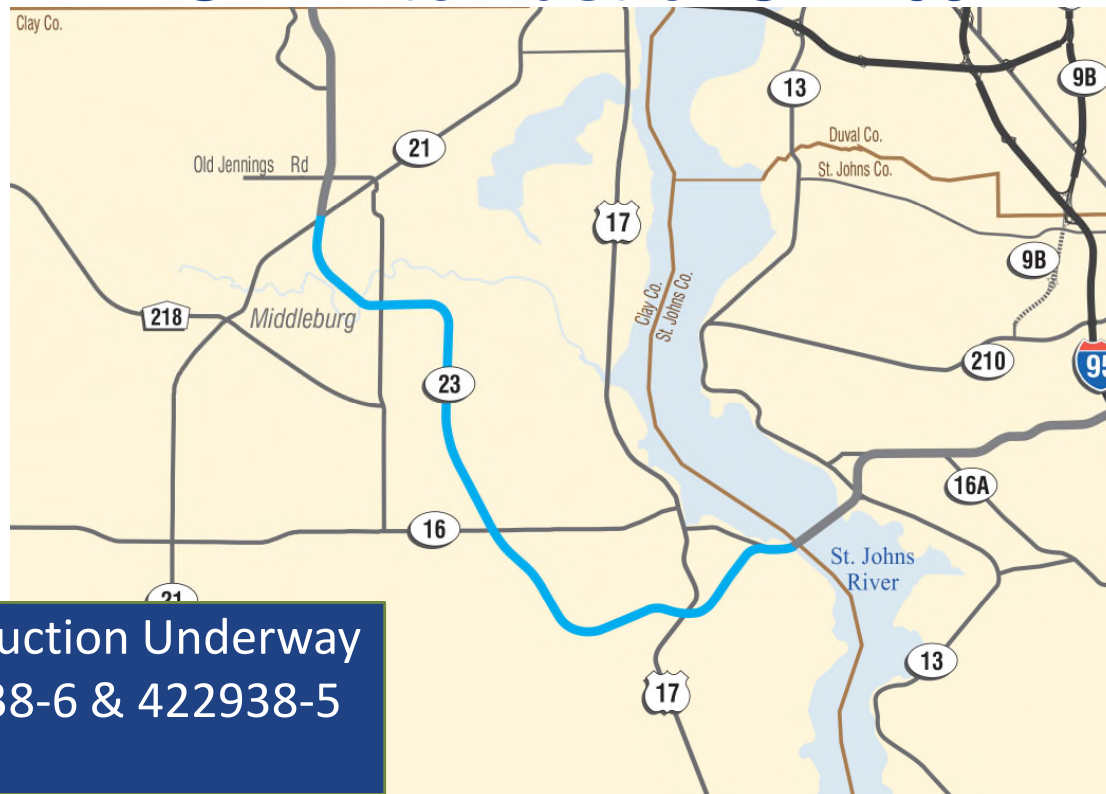




Florida Department of Transportation
District 2



SR 21 to East of CR 209





Florida Department of Transportation
District 2



East of CR 209 to I-95



Projects Funded
422938-7 &
422938-8/422938-9



Florida Department of Transportation
District 2



Funded for FY 2022 at \$350 Million





Florida Department of Transportation
District 2

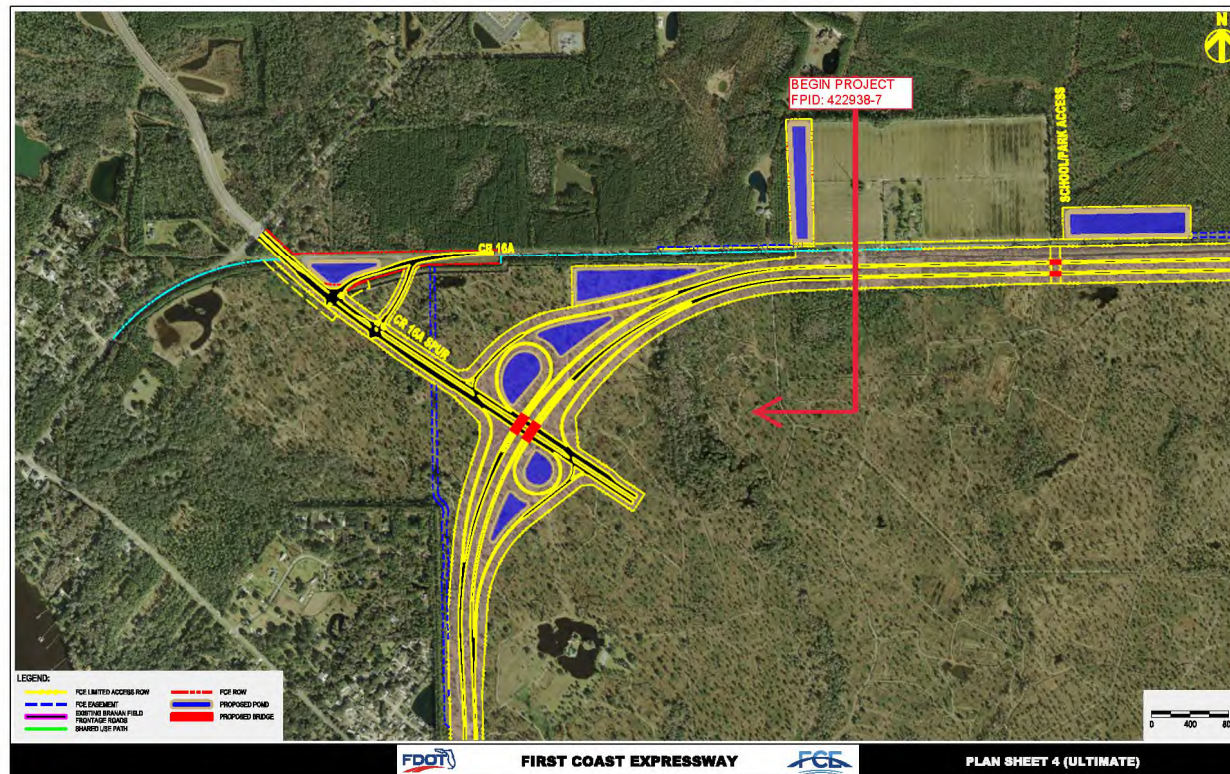


New Bridge Over St. John's River





Plan Sheets





Florida Department of Transportation
District 2

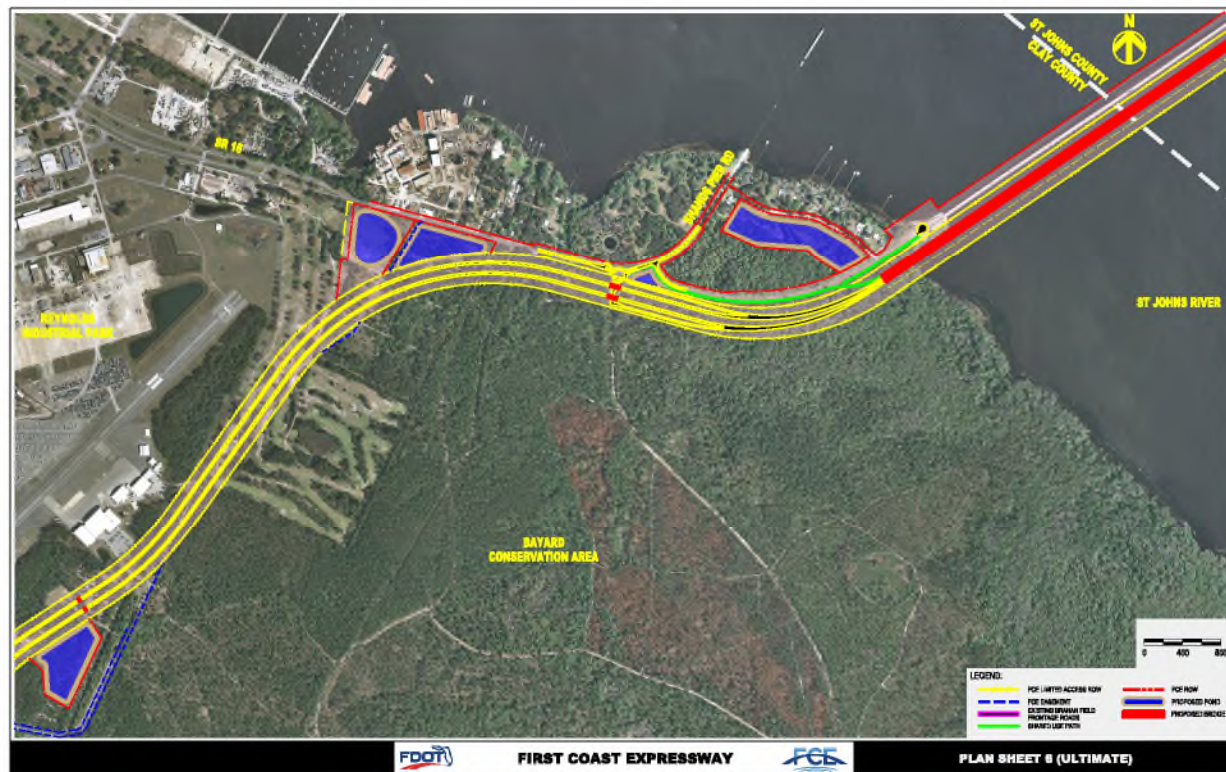


Plan Sheets





Plan Sheets

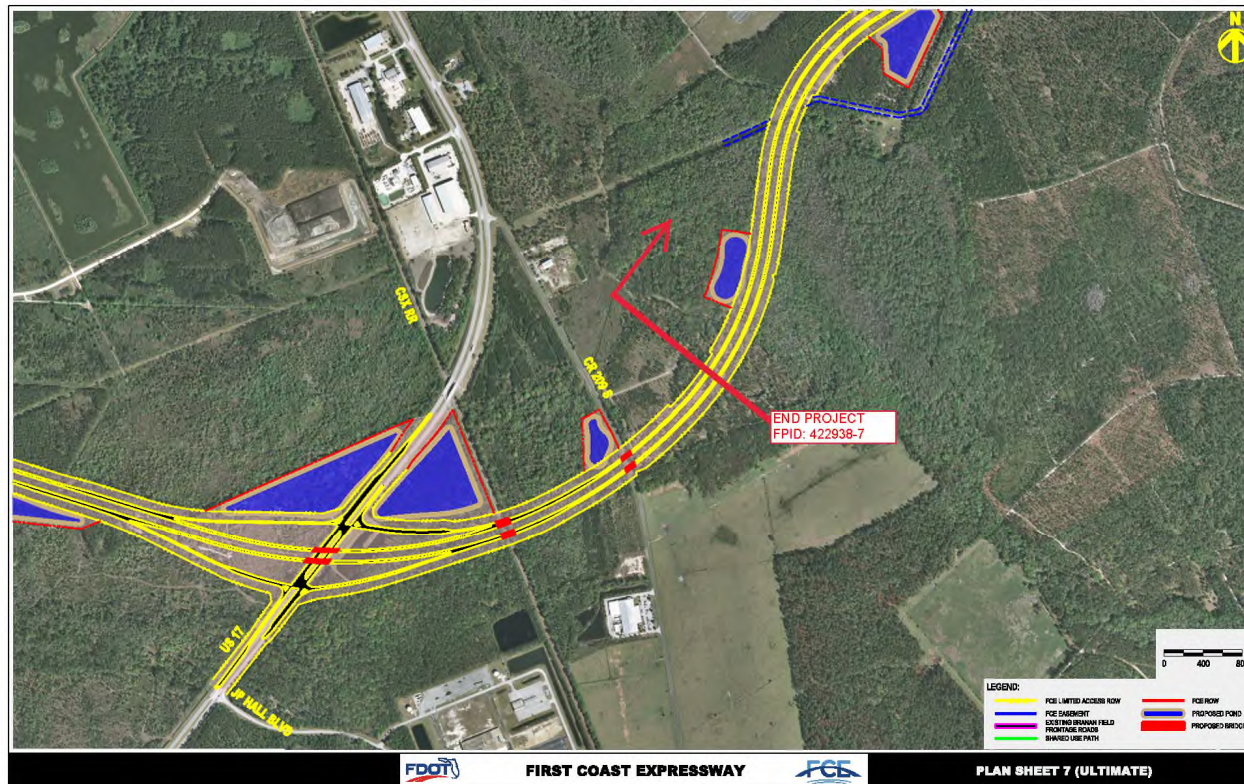




Florida Department of Transportation
District 2



Plan Sheets





Florida Department of Transportation
District 2



Renderings





Florida Department of Transportation
District 2



Renderings





Florida Department of Transportation
District 2



Renderings





Florida Department of Transportation
District 2



Renderings

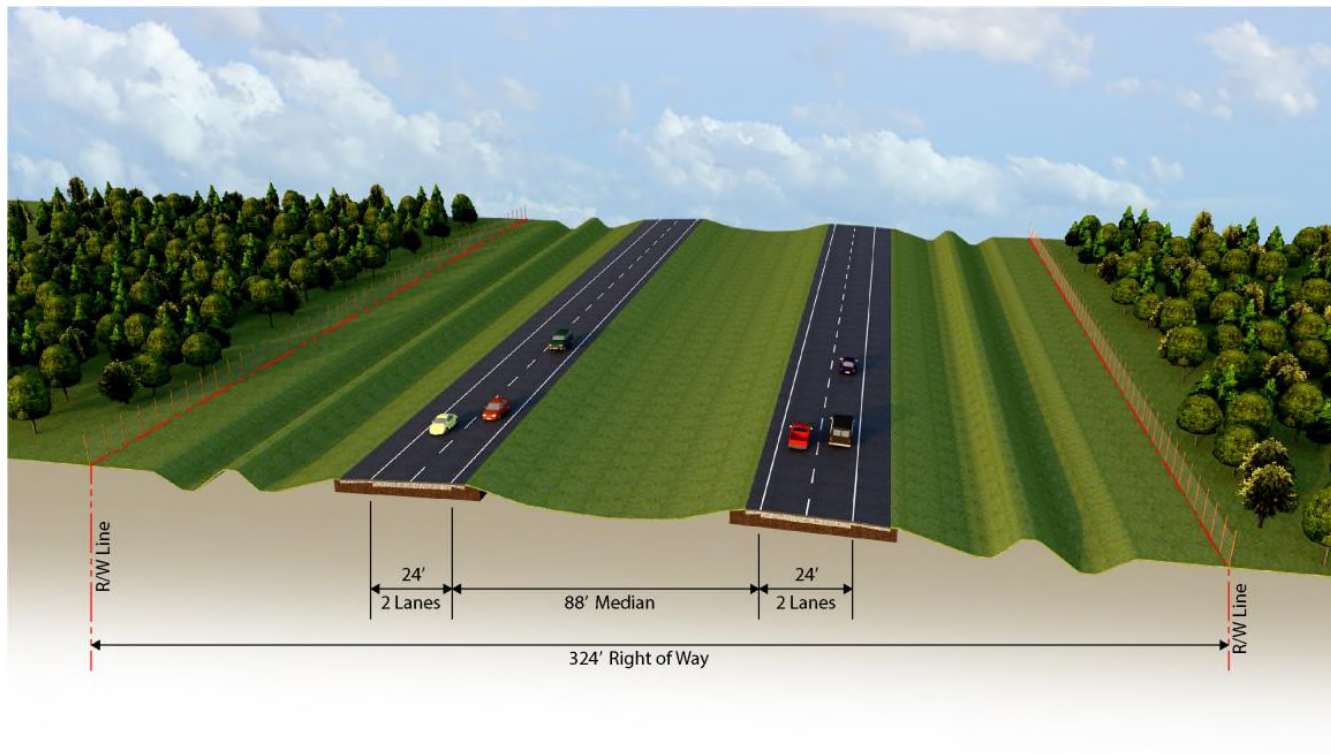




Florida Department of Transportation
District 2



Typical Section





Specifications

- **Length:** 9,280 feet
- **Width:** 103 feet
- **Beam Type:** Pre-Cast Concrete with I-Girders (FIB)
- **Spans:**
Approaches: 145 feet
Continuous Channel: 180 feet – 230 feet – 180 feet
- **Channel Span Clearance:**
Horizontal: 150 feet
Vertical: 65.5 feet
- **Channel Beam:** Haunched PT Concrete I-Girders or Haunched Steel I-Girders
- **Pier:** Double Hammerhead (no pile bents)
- **Other:** Spill-thru Abutments
- **Fender:** Polymeric System
- **Vessel Collision:** 1,500 kips



Status

- **Permits:** St. Johns River Water Management Approved March 8, 2018
US Army Corps of Engineers Approved April 11, 2018
US Coast Guard (Bridge Permit) – Pending, final approval in Spring 2020
- **Survey:** Completed
- **Geotech:** Completed
- **Plans:** Conceptual Plans for Design Build Delivery – Completed
- **Utilities:** Minor relocations required
- **Typical Section Package:** Completed Fall 2019
- **Pavement Design:** Completed Fall 2019
- **Bridge Development Reports:** Completed Summer 2019

First Coast Expressway

An aerial perspective of a long, multi-lane bridge spanning a body of water. The bridge features multiple lanes for traffic, with cars and a cyclist visible. A white speedboat is moving across the water to the left of the bridge. The bridge is supported by numerous concrete piers. In the background, a small wooden pier extends into the water. The sky is clear and blue.

**FLORIDA DEPARTMENT OF
TRANSPORTATION, DISTRICT 2**

Taylor Byrd, P.E.
Construction Senior Project Manager