

# Flexible Positive Protection

Laura Huizinga  
Laura.Huizinga@Lindsay.com, 616-994-2389

12/13/19

## 24" QMB



- NCHRP 350 TL
- 24" wide, 32" Tall, 1 M Long
- Unanchored Barrier

## 18" RTS



- MASH TL3
- NCHRP 350 TL3, TL4
- 18" Wide, 32" Tall, 1 M Long
- Unanchored Barrier

## BTM



- Transfers from 8' – 18'
- Speeds up to 5mph
- Absorb 350 unanchored attenuator transfers through the BTM

# Safety & Mobility

## IN, I-65 (2017)

Moveable Barrier added to project due to safety concerns

- Previous season used plastic drums for lane closure
- Lane closure is expanded at night to create work zone
- 3-lanes open during peak hours (4:30 am – 7:30 pm)





## IN I-70, CPR (2019)

### Concrete Paving Rehabilitation

- Indiana DOT, Contractor Safety Initiative
- Barrier Wall Separation
  - Work with High Worker Exposure
  - High ADT, Truck Traffic %
  - Static Wall used when lane closures allowed
  - Moveable Barrier used to provide off-peak lane closures
    - Nightly Lane Closures
    - Weekend Lane Closures



# Safety & Efficiency

MI, US-131 (2018)

**ROAD ZIPPER™**  
BY LINDSAY





# Safety & Efficiency

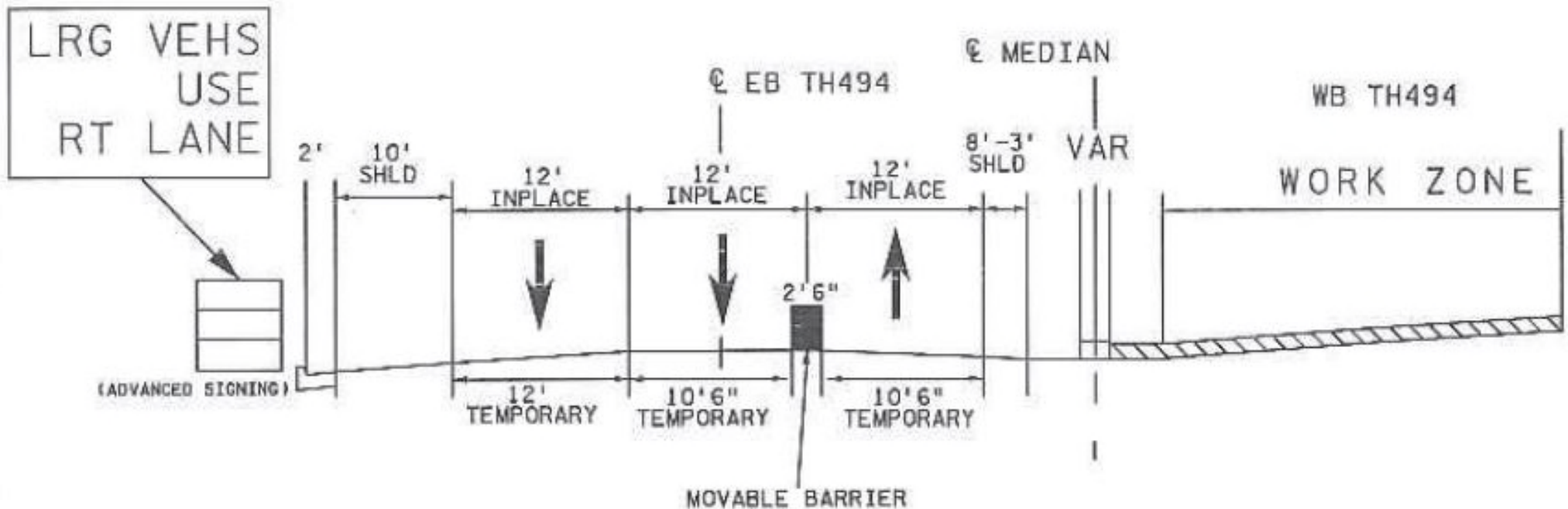
MN, I-94 St. Paul (2016-2017)



# Accelerated Construction

Minneapolis, MN I-494 Echelon Paving 2019

WB TH494 FROM  
APPROX STA. 245+00 TO APPROX STA. 215+00



## Questions?

**Laura Huizinga**

[Laura.Huizinga@Lindsay.com](mailto:Laura.Huizinga@Lindsay.com)

616-994-2389