

ITCP Sample 1

AJAX



The Future is Riding on Ajax.™

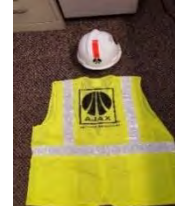
Job-site Internal Traffic control Planning

Date presented: The night of 12/7/17 Area: State Road 70 @ US 41 Job # 372117

Job site procedures

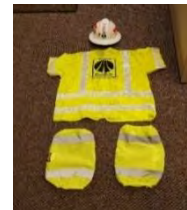
- **Be highly visible**

- Daytime Operations – minimum requirements
 - Class 2 Reflective vest
 - Hard hats with reflective tape



- Night time operations – minimum requirements

- Class 3 reflective vest with sleeves
- Reflective leggings (from the knee to ankle)
- Hard hats with reflective tape



- **Be in the right place**

- Crew
 - Stay within of your assigned operations (night work, stay within lighted area).
 - Utilize spotter when required (see below)
- Quality Control
 - Stay within 100 ft. of your QC truck or within lighted work area
 - Utilize spotter when required (see below)
- Supervision
 - Stay near lighted area when on foot
 - Utilize spotter when required (see below)
- Verification Technician
 - Must adhere to the crew and Quality Control requirements
 - Utilize spotter when required (see below)
 - Check in with supervisor for any special instruction

- **Spotter system**

- A spotter is required when working away from your crew on a task that prevents your full attention to internal or external traffic. Spotter will have a flashlight or traffic wands to warn others in work zone of their location.
 - Marking or string lining
 - Cutting cores
 - Checking slopes
 - On foot doing tasks away from your crew during night time operations

- **Truck / Vehicle traffic in the Work Zone**

- No cell phone use allowed in work zone while operating a vehicle or equipment.

Date presented: _____ Area: _____ Job # _____

- Speed Limit
 - 10 mph with in work zone, no exceptions
- Personal vehicles
 - Vehicles not used for construction must be parked in designate parking areas and workers transported to assigned area via company vehicle
- Deliveries
 - All deliveries must be coordinated with on-site supervisor.
- **Report unsafe conditions immediately**
 - Remember to report any and all unsafe practices and conditions to the on-site supervisor
 - Consider using a Crash truck / off duty officer t when posted speed limit is greater than 45 mph

Task Procedures

● **Assigned crew**

- Supervisor (on-site)
 - Isabell Troxell,
- Paving Foreman
 - Joe White
- MOT Foreman
 - Amber White
- Clean up Foreman
 - Josh Vertescher
- Subcontractors
 - Akca Inc
- Trutsecking vendors
 - Sabrinas

● **Hours of operation**

- Lane Closure restrictions
 - 10pm-6am
- Crews start and stop time
 - 10pm-530AM
- Load out time
 - 2@ 10
 - 2 @1015
 - 3@ 1030

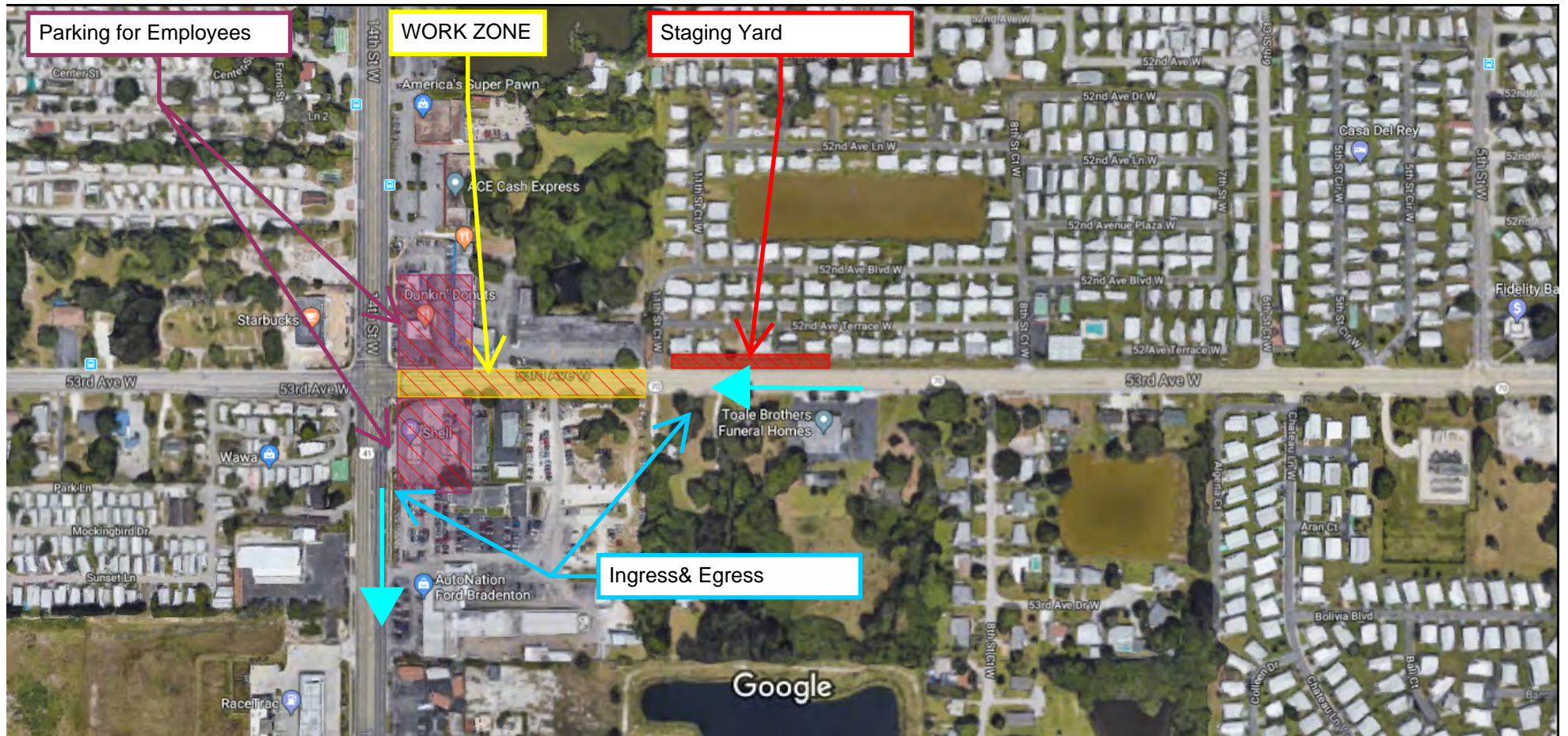
● **Scope of Work**

- Description
 - Amber will close the two inside lanes for the paving crew. We will pave the two inside lanes, have Akca layout and stripe, and flip the closures to the outside lanes and repeat
- Limits (work zone)

- Shown on map
- **Scope of work continued:**
 - FDOT index for MOT
 - Sequence of work
 - Establish release / exit areas
- **Job site restrictions** (project specific)
 - Restricted area of foot traffic
 - This is a very busy area with residents and businesses. Everyone is in a hurry. Please be aware of your surroundings and focus on safety.
 - **Clear zone widths for works zones:** The term 'clear zone' describes the unobstructed relatively flat area, impacted by construction, extending outward from the edge of the traffic lane. The table below gives clear zone widths in work zones for medians and roadside conditions other than roadside canals; where roadside canals are present, clear zone widths are to conform with the distance to canals as described in Volume I, Chapter 4, Section 4.2 and Exhibit 4-A and 4-B of the Plans Preparation Manual.

| CLEAR ZONE WIDTHS FOR | WORK ZONES | |
|------------------------------|---------------------------------------|--|
| Work zone speed (mph) | Travel lanes & multilane ramps (feet) | Auxiliary lanes & single lane ramps (feet) |
| 60-70 | 30 | 18 |
| 55 | 24 | 14 |
| 45-50 | 18 | 10 |
| 30-40 | 14 | 10 |
| All speeds curb and gutter | 4' Behind face of curb | 4' Behind face of curb |

- What is the clear zone on your project?
 - 30-40 MPH : 14' Travel Lane and 10' Aux/single lane
 - Park equipment out of the clear zone in a line and place cones around equipment when possible.



ITCP Sample 2

AJAX



The Future is Riding on Ajax.™

Internal Traffic Control Plan

**Taxiway N Reconstruction, Airfield Slab Replacement, Airside F Joint and Slab
Rehabilitation & Taxiway W Reconstruction
Tampa International Airport
Job # 373417**



HOURS of OPERATION

- Monday – Friday: 6AM until 6PM, unless otherwise directed.
- 7:00 A.M. – Safety/Security Briefings

KEY PERSONNEL

- Project Superintendent
 - **Curt Selbak** (239-633-3272) – **Primary**
 - **Jeff Purcell** (727-919-9576)
- Construction Safety/Security Officer (CSSO)
 - **Justin Woody** (813-210-0708)

JOB LOCATIONS

Staging Area - Primary

- **Gate N-5** (pictured below), located on the South side of W. Hillsborough Ave, on the airport service road, opposite side of Hoover Blvd.
- **Approximate address: 4700 N. Hoover Blvd, Tampa, Florida 33607**

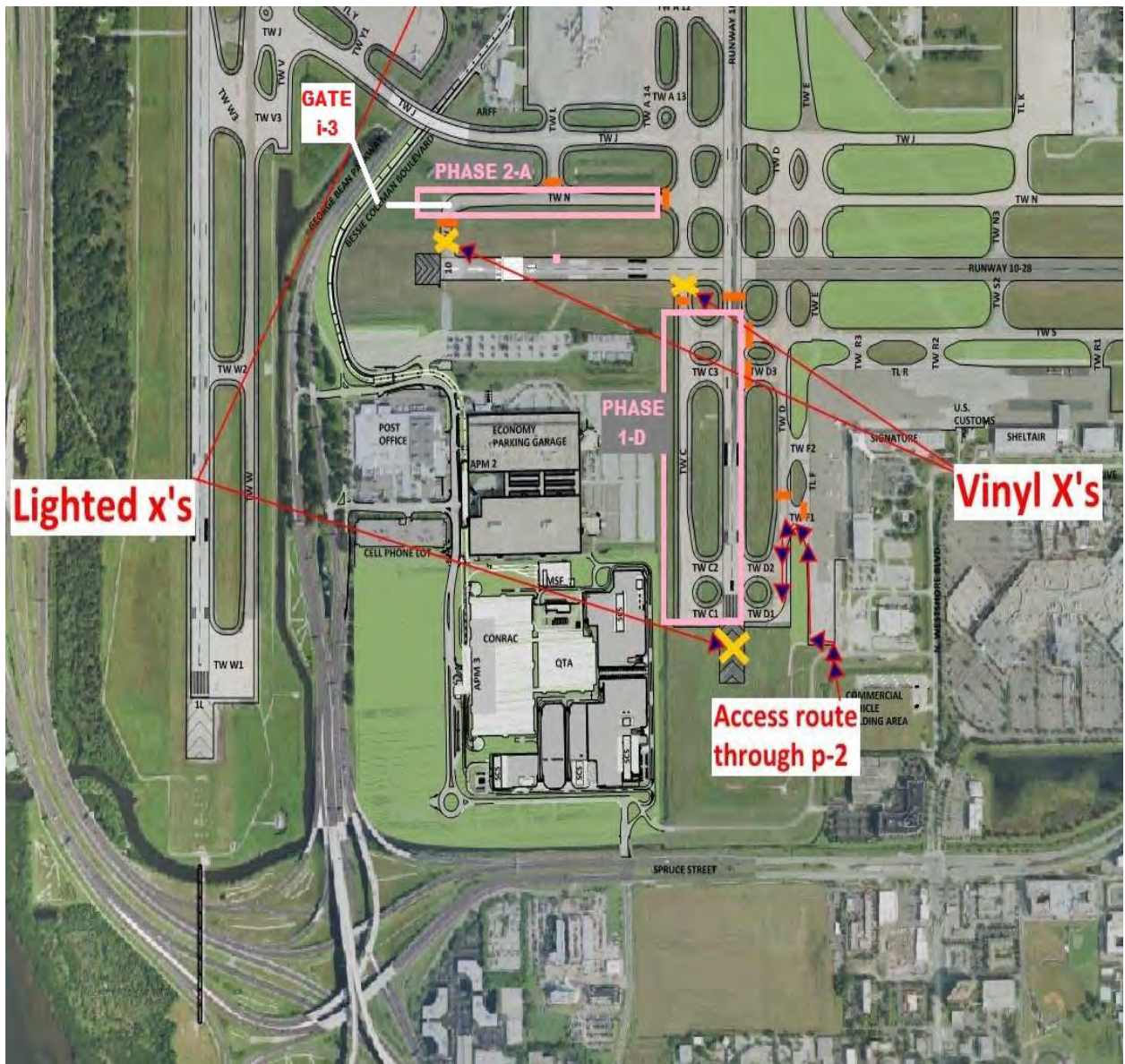


Phase I – Area D

- **Gate P-2** (pictured below), located on the Airport Service Road.
- Approximate address: 5211-5217 Airport Service Road, Tampa, FL 33607.
- Use W Spruce St. to N. O'Brien St. or N. Westshore Blvd.

Phase 2 – Area A

- **Gate i-3** (pictured below), located on Bessie Coleman Blvd.
- Approximate address: 3794-3876 Bessie Coleman Blvd, Tampa, FL 33607.



Phase I – Areas A, B and C / PEMCO – CARGO

- **Gate P-11** (pictured below), located approximately N. Westshore Blvd and W. Tampa Bay Blvd. **DO NOT BLOCK GATES** while waiting for an escort/entry.



Phase I – Area I and J / AIRSIDE A

- **Gate A-1** (pictured below), located on Bessie Coleman Blvd.
- Approximate address: 3794-3876 Bessie Coleman Blvd, Tampa, FL 33607
- Employee parking will be at the Staging Area on Hoover Blvd.
- **DO NOT BLOCK GATES** while waiting for an escort/entry.
- Contact Superintendent or CSSO prior to arriving for Escort.



DAILY SAFETY/SECURITY BRIEFINGS

- All Ajax and sub-contractors, truck foreman and supervisors are required to attend daily safety and security briefings at 7:00 A.M., located at the Staging Area. **No personnel are allowed entry onto the Airfield until this meeting has concluded.**
- The Superintendent and CSSO will have direct control over all personnel to ensure all construction activities are in compliance with the Construction Safety Phasing Plan (CSPP). Any deviations to ITCP or CSPP not addressed during the morning huddle must be coordinated and approved by the CSSO and Superintendent.
- All crews must advise the CSSO and Superintendent prior to leaving to ensure work areas are in compliance with the CSPP and inspected by the airport.



PERSONAL PROTECTIVE EQUIPMENT (PPE)

- **Daytime Operations** – minimum requirements

- Class 3 Reflective vest
- Hard hats with reflective tape

- **Night-time Operations** – minimum requirements

- Class 3 reflective vest with sleeves
- Reflective leggings (from the knee to ankle)
- Hard hats with reflective tape
- EYE protection (blowing winds, jet blast)
- EAR protection (heavy equipment and jet noise)
- Gloves, facemasks, water, sunscreen



- **Additional Requirements** –

- Safety vests **MUST** have company logos

WORK AREA PROCEDURES

TYPE I low profile barricades (pictured below), are located on all sides of the work areas, indicating work boundaries, protecting active runways, taxiways, and aircraft parking aprons. **DO NOT** step over, drive around, or move without coordinating with the Superintendent or CSSO.



While in the work area, all personnel must follow TRUCK ROUTE signs (pictured below). **DO NOT** drive past stop signs marked **DO NOT PROCEED/ESCORT REQUIRED**. You must contact the Superintendent or CSSO for escort. **Aircraft ALWAYS have the Right-of-Way.**



All vehicles must have **Company Logos** on both sides of the vehicle, and an amber rotating **Beacon** light on the top of the vehicle that is visible from all directions.

Heavy equipment must be equipped with 3X3 foot orange and white equipment flags (pictured below).



Runway Hold Signs/Markings (pictured below) have white lettering with a red background and have hold lines that are two yellow stripes followed by two broken yellow stripes. **DO NOT CROSS**

Movement/Non-Movement Area Boundary Markings (pictured below) have a solid yellow stripe followed by broken yellow stripes. **DO NOT CROSS**



SECURITY REQUIREMENTS:

- Always ensure all airport gates close when entering/exiting. Never leave a Gate unsecured. If there a gate malfunction, or is any issue securing a gate, the employee will maintain security of that Gate and contact the Superintendent or CSSO immediately.
- Never allow any person or vehicle to enter the airfield that is not part of AJAX or AJAX's subcontractor. Be polite and advise any persons trying to follow you onto the airfield that they must back away from gate and contact their company for entry/escort.
- Do not block gates when waiting for an escort.
- AJAX and subcontractors must supervise the entry and exit through all airport gates for any persons not familiar with the airport work areas.
- AJAX and subcontractors assigned to job and familiar with airport environment must escort all drivers TO/FROM the work areas.
- Any operations outside 6AM - 6PM, Monday – Friday must be coordinated through the Superintendent and CSSO prior to entering the airfield.
- All vehicles, equipment, and materials must be parked at least 10 feet away the perimeter fence.
- All crews must check with Superintendent before leaving the job site to ensure all security and safety requirement are met.
- Gate access codes and keys are limited to the Superintendent and CSSO.

Emergency Response:

- In the event of a situation requiring immediate medical or law enforcement emergency on the job-site, dial 911 and advise them that you are located at the Tampa International Airport, inside the Airfield, and that you work with AJAX Paving Industries and you're a construction worker. Ensure your Foreman, Superintendent and CSSO are aware of the situation.
- If the situation is not life-threatening, contact your Foreman, Superintendent, or CSSO.

Foreign Object Debris (FOD) / Dust Control

- FOD is anything substance on the airfield that could cause damage to an aircraft. Trash, food, rocks, dirt clumps are some examples of FOD.
- All personnel are required to check their vehicles and equipment before entering the airfield and leaving the work site to ensure excessive dirt and rocks are removed from tires and wheel wells. Trash should also be removed/contained as not to be blown from the vehicle during high wind conditions. It is recommended to continuously check of your vehicle and equipment throughout the day when driving on the airfield.
- All food and trash will be taken off-site thrown away. Trash and food will never be thrown on the ground. Trash/Food attract wildlife.
- Smoking is prohibited on the airfield.
- Haul routes and open taxiways between work areas will be continuously swept using a Sweeper/VAC truck or broom tractor.
- Dust will be kept to an absolute minimum. Per AJAX Silica policy, any procedure creating dust will be mitigated using water as much as possible.
- If you see FOD, trash or food, please pick it up, even if it's not yours.



TRUCKING OPERATIONS



Daily trucking operations will be coordinated through the Superintendent. Trucking Foreman/Dispatchers are required to inform their drivers of the ITCP information and arrival locations (**I-3, P-2, P-11 and N-5, A-1,**).

Drivers are instructed to follow marked vehicles with AJAX Logos.

Escort drivers will identify themselves as the escort and to follow them.

- Trucks will **NOT BLOCK GATES** when waiting for an escort/entry.
- Trucks will be escorted by marked AJAX vehicles only.
- Speed limits approaching any Gates and within the work areas is restricted to **10 MPH**.
- Truck Foremen will monitor the trucking operations as directed by the Superintendent or CSSO.

JOB SITE PROCEDURES

Date presented: 01-22-2018 to 01-27-2018

Area: 3 **Job #** 373417

Job site procedures

- **Be highly visible**

- Daytime Operations – minimum requirements
 - Class 3 Reflective vest
 - Hard hats with reflective tape
- Night time operations – minimum requirements
 - Class 3 reflective vest with sleeves
 - Reflective leggings (from the knee to ankle)
 - Hard hats with reflective tape



- **Be in the right place**

- Crew
 - Stay within of your assigned operations (night work, stay within lighted area).
 - Utilize spotter when required (see below)
- Quality Control
 - Stay within 100 ft. of your QC truck or within lighted work area
 - Utilize spotter when required (see below)
- Supervision
 - Stay near lighted area when on foot
 - Utilize spotter when required (see below)
- Verification Technician
 - Must adhere to the crew and Quality Control requirements
 - Utilize spotter when required (see below)
 - Check in with supervisor for any special instruction

- **Spotter system**

- A spotter is required when working away from your crew on a task that prevents your full attention to internal or external traffic. Spotter will have a flashlight or traffic wands to warn others in work zone of their location.

- Marking or string lining
 - Cutting cores
 - Checking slopes
 - On foot doing tasks away from your crew during night time operations
- **Truck / Vehicle traffic in the Work Zone**
 - No cell phone use allowed in work zone while operating a vehicle or equipment.
 - Speed Limit
 - 10 mph with in work zone, no exceptions
 - Personal vehicles
 - Vehicles not used for construction must be parked in designate parking areas and workers transported to assigned area via company vehicle
 - Deliveries
 - All deliveries must be coordinated with on-site supervisor.
- **Report unsafe conditions immediately**
 - Remember to report any and all unsafe practices and conditions to the on-site supervisor
 - Consider using a Crash truck / off duty officer t when posted speed limit is greater than 45 mph

Task Procedures

- **Assigned Crews**
 - Project Superintendent - **Daily**
 - Curt Selbak - 239-633-3272 – Primary
 - Jeff Purcell – 727-919-9576
 - Construction Safety/Security Officer - **Daily**
 - Justin Woody - 813-210-0708
 - Concrete Foreman –
 - John Lake - 727-243-7504 - **Daily**
 - Grade Foreman -
 - Major Flowers – 813-545-7218 - **Daily**
 - Roberto Rodriguez - 727-214-4119
 - Paving Foreman
 - N/A
 - MOT Foreman -
 - Chris Rutherford – 813-613-4922

- Amber White – 727-638-3443
- Pipe Foreman –
 - N/A
- Trucking Foreman
 - Dejan Vujaklija - 727-638-3377
 - Freddy/JMS – 813-363-3976
 - Ramon/Sabrinias – 813-464-5745
- Surveyors
 - N/A
- Cleanup Crew
 - N/A
- Subcontractors
 - N/A
- Trucking vendors
 - AJAX, JMS, Sabrina's

- **Hours of operation**

- Lane Closure restrictions
 - N/A
- Crews start and stop time
 - Monday – Friday: 6AM until 6PM unless otherwise directed
- Load out time
 - N/A

- **Scope of Work**

- Description
 - (Phase 1D, Phase 2A Areas) Install erosion control, bridging electrical circuits, demolition of PCC pavement, taxiway edge lighting, pavement markings, sodding and associated electrical work. Spall repair and sealing of cracks.
 - (Phase 1A, B, C, I, J) Spall repair and sealing of cracks, striping.
- Work Zone
 - See attached map and haul routes
- Maintenance of Traffic
 - Regard all flaggers on site
 - All non-assigned personnel will assist with escorting, and flagging of trucks within the worksite to prevent trucks from deviating from the work limits.

- Establish release / exit areas
 - All drivers must enter/exit work site through assigned gates under escort

- **Scope of Work (continued)**
 - FDOT index for MOT
 - FDOT design standards Index No. 600
 - FAA index for Airfield Operations
 - AC 150/5370-2F “Operational Safety On Airports During Construction”
 - AC 150/5210-5D “Painting, Marking, Lighting of Vehicles used on an Airport”
 - AC 150/5210-24 “Airport Foreign Object Debris (FOD) Management”
 - Code of Federal Regulations, 14 CFR Part 77 “Safe Efficient Use and Preservation of Navigable Airspace.
 - Sequence of work
 - N/A
 - Establish release / exit areas
 - See attached map and haul routes. All non-badge workers and drivers must be escorted by badged employees.

- **Job site restrictions (project specific)**
 - Restricted foot traffic
 - Workers must use port-a-lets, NO EXCUSES
 - Do not throw garbage, trash or discard food items of any kind inside the work zone.
 - Truck drivers must stay in their trucks
 - VEST & HARDHATS are mandatory when outside of vehicles
 - No oil leaks
 - No smoking
 - Check backup alarms & lights. Report any vehicle with non-functioning backup alarms and lights to your supervisor.
 - Follow all signage into work zone

- **Clear zone widths for works zones:** The term ‘clear zone’ describes the unobstructed relatively flat area, impacted by construction, extending outward from the edge of the traffic lane. The table below gives clear zone widths in work zones for medians and roadside conditions other than roadside canals; where roadside canals are present, clear zone widths

are to conform with the distance to canals as described in Volume I, Chapter 4, Section 4.2 and Exhibit 4-A and 4-B of the Plans Preparation Manual.

| CLEAR ZONE WIDTHS FOR | WORK ZONES | |
|------------------------------|---------------------------------------|--|
| Work zone speed (mph) | Travel lanes & multilane ramps (feet) | Auxiliary lanes & single lane ramps (feet) |
| 60-70 | 30 | 18 |
| 55 | 24 | 14 |
| 45-50 | 18 | 10 |
| 30-40 | 14 | 10 |
| All speeds curb and gutter | 4' Behind face of curb | 4' Behind face of curb |

- What is the clear zone on your project?
 - **Runway Safety Area (RSA)** 250 feet from centerline of the runway
 - **Taxiway Safety Area (TSA)** 107 feet from centerline of the taxiway
 - No operations are permitted within the RSA or TSA if the runway or taxiway is open.
 - **Runway Object Free Area (ROFA)** 400 feet from runway centerline
 - **Taxiway Object Free Area (TOFA)** 160 feet from taxiway centerline
 - All equipment and materials will be removed from the Runway Object Free Area (ROFA) and Taxiway Object Free Area (TOFA) at the end of each day.
 - Equipment and materials will be group together in neat an organized manner and marked with reflective cones or barricades.

AIRFILED MAINTENANCE OF TRAFFIC (MOT) DEVICES

Equipment Flags

Equipment flags will be used on all equipment inside the airfield. Flags must be elevated above the equipment (pictured below). It may be necessary to use two poles duct taped together and then zip-tied or taped to the equipment away from exhaust tips unless elevated above. This requirement serves as a visual indicator to aircraft during the day when not equipped with rotating beacon lights. Whenever equipment is removed from the airfield for transport, please ensure flags are taken off equipment and left inside the work area or given to the Superintendent, so they be used on other equipment. Flags will be replaced when torn or faded.





Type I – Low Profile Barricade, Lights, and Flags

Barricades will never be moved unless coordinated by the Superintendent or CSSO. If told to move the barricades, please do so with care. Barricades may be water-filled or weighted down with sandbags. If water-filled, utilize two personnel or a loader with forks, or drag the barricade using the side of the barricade with the thumb connector (pictured below). Slamming the barricade will break internal mechanism of solar-power lights. **DO NOT** pull or move the barricades using the lights.



Use caution and avoid accidentally running over or tack-coating barricades during paving operations. Barricades will be connected or spaced at a **maximum of 4 feet**. Barricade Flags are supplemental and as directed by the owner. Barricade Lights will

be flashing or steady red. Sandbags will be used to supplement water-filled barricades. Sandbags will not cover the reflective portion of the barricades or lights (pictured below).



Vehicle Beacon Lights / Decals

All vehicles operating on the Airfield will be equipped with an amber rotating beacon light. This light must be seen from **ALL directions** by taxiing aircraft, and aircraft landing or taking off. Lights obstructed by work equipment/materials must be repositioned to where the light is above all obstructions, or lights are added to blind spots on the vehicle. Company LOGOS are required on both sides of the vehicle. When using vehicle magnets, ensure magnets are secured to the sides and check periodically when on the airfield to ensure they did not come off.



ITCP Sample 3

AJAX



The Future is Riding on Ajax.™

Job-site Internal Traffic control Planning

Date presented: ____12/14/2017____ Area: ____3____ Job # 375217

Job site procedures

- **Be highly visible**

- Daytime Operations – minimum requirements
 - Class 2 Reflective vest
 - Hard hats with reflective tape
- Night time operations – minimum requirements
 - Class 3 reflective vest with sleeves
 - Reflective leggings (from the knee to ankle)
 - Hard hats with reflective tape



- **Be in the right place**

- Crew
 - Stay within of your assigned operations (night work, stay within lighted area).
 - Utilize spotter when required (see below)
- Quality Control
 - Stay within 100 ft. of your QC truck or within lighted work area
 - Utilize spotter when required (see below)
- Supervision
 - Stay near lighted area when on foot
 - Utilize spotter when required (see below)
- Verification Technician
 - Must adhere to the crew and Quality Control requirements
 - Utilize spotter when required (see below)
 - Check in with supervisor for any special instruction

- **Spotter system**

- A spotter is required when working away from your crew on a task that prevents your full attention to internal or external traffic. Spotter will have a flashlight or traffic wands to warn others in work zone of their location.
 - Marking or string lining
 - Cutting cores
 - Checking slopes
 - On foot doing tasks away from your crew during night time operations

- **Truck / Vehicle traffic in the Work Zone**

- No cell phone use allowed in work zone while operating a vehicle or equipment.
- Speed Limit
 - 10 mph with in work zone, no exceptions
- Personal vehicles
 - Vehicles not used for construction must be parked in designate parking areas and workers transported to assigned area via company vehicle
- Deliveries
 - All deliveries must be coordinated with on-site supervisor.

- **Report unsafe conditions immediately**

- Remember to report any and all unsafe practices and conditions to the on-site supervisor
- Consider using a Crash truck / off duty officer t when posted speed limit is greater than 45 mph

Task Procedures

- **Assigned crew**

- Supervisor (on-site)
 - Brian Pittman
- Grade Foreman
 - Major Flowers
- Paving Foreman
 - Joe White
- MOT Foreman
 - Dana Martiello
 - Amber White
 - Robert Richardson
- Pipe Foreman
 - Dave Brower
 - Gary Schultz
- Subcontractors
 - Bob's Barricades, Leftcoast, Keystone, Bob's Barricades, Turtle SE, Sweep It, AKCA.
- Trucking vendors
 - Sabrina's, JMS

- **Hours of operation**

- Lane Closure restrictions
 - No restrictions
- Crews start and stop time
 - Daytime: 7am to 6pm
 - Night time: 7pm to 6am

- Load out time
 - Daytime: 8am
 - Night time: None

- **Scope of Work**

- Description
 - Milling/Paving
 - Traffic shift
- Limits (work zone)
 - See map
- FDOT index for MOT
 - Standard for single, double lane closures, and temporary traffic shifts.
 - Index 612, 613, and 614.
- Sequence of work
 - Turtle out milling at 1.5" on WB SR 60 on all 3 lanes with closed traffic
 - Joe White paving structural and friction course in same area
 - AKCA out striping area
 - At end of day will open traffic back up to westbound SR 60. Left lane on eastbound SR 60 will remain closed.
- Establish release / exit areas
 - SR 60 east and westbound

- **Job site restrictions** (project specific)

- Restricted area of foot traffic
 - All workers will park their personal vehicles at the location designated on map
 - Workers must utilize a spotter at all times
 - All workers when outside the work zone must use the crosswalks in place.

Clear zone widths for work zones: The term 'clear zone' describes the unobstructed relatively flat area, impacted by construction, extending outward from the edge of the traffic lane. The table below gives clear zone widths in work zones for medians and roadside conditions other than roadside canals; where roadside canals are present, clear zone widths are to conform with the distance to canals as described in Volume I, Chapter 4, Section 4.2 and Exhibit 4-A and 4-B of the Plans Preparation Manual.

| CLEAR ZONE WIDTHS FOR | WORK ZONES | |
|----------------------------|---------------------------------------|--|
| Work zone speed (mph) | Travel lanes & multilane ramps (feet) | Auxiliary lanes & single lane ramps (feet) |
| 60-70 | 30 | 18 |
| 55 | 24 | 14 |
| 45-50 | 18 | 10 |
| 30-40 | 14 | 10 |
| All speeds curb and gutter | 4' Behind face of curb | 4' Behind face of curb |

Date presented: _____ Area: _____ Job # _____

- What is the clear zone on your project?
 - Most areas where are crews will be working are behind curb, so we would need 4' behind face of curb
 - Areas without curb will be in the 30-40mph zone so we would need 14'
 - Park equipment out of the clear zone in a line and place cones around equipment when possible.

Traffic Shift

Employee Parking Staging Area

WORK ZONE

Single inside
Lane closure WB
SR 60

Traffic Shift

Florida Department
of Transportation...

RIVER COMPLETE

Ashland

State
Trooper
24/7.

State
Trooper
24/7

Temp traffic switch WB
SR 60; 2 lane one way
traffic on eastbound
SR 60; 24 hour
continuous operation