



# GICA

**GEORGIA INDEPENDENT COLLEGE ASSOCIATION**

# Descriptives

**2025-2026**

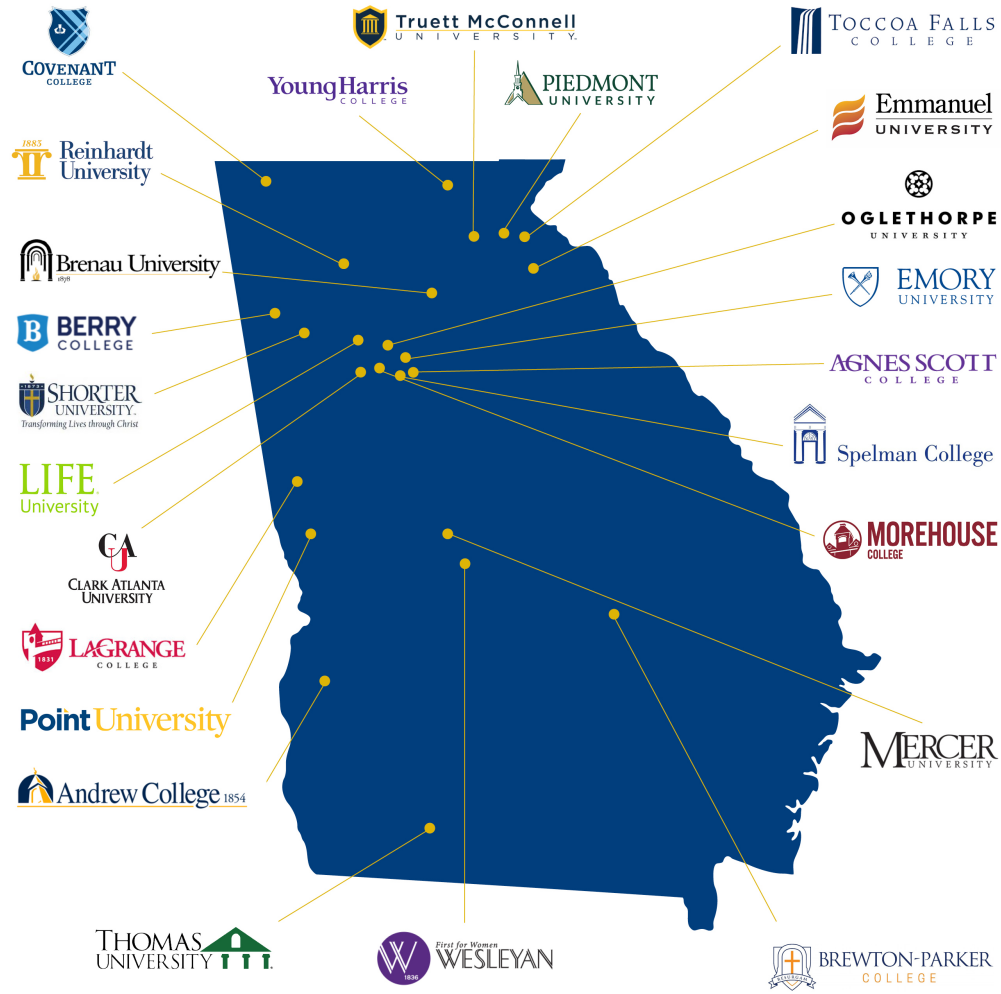
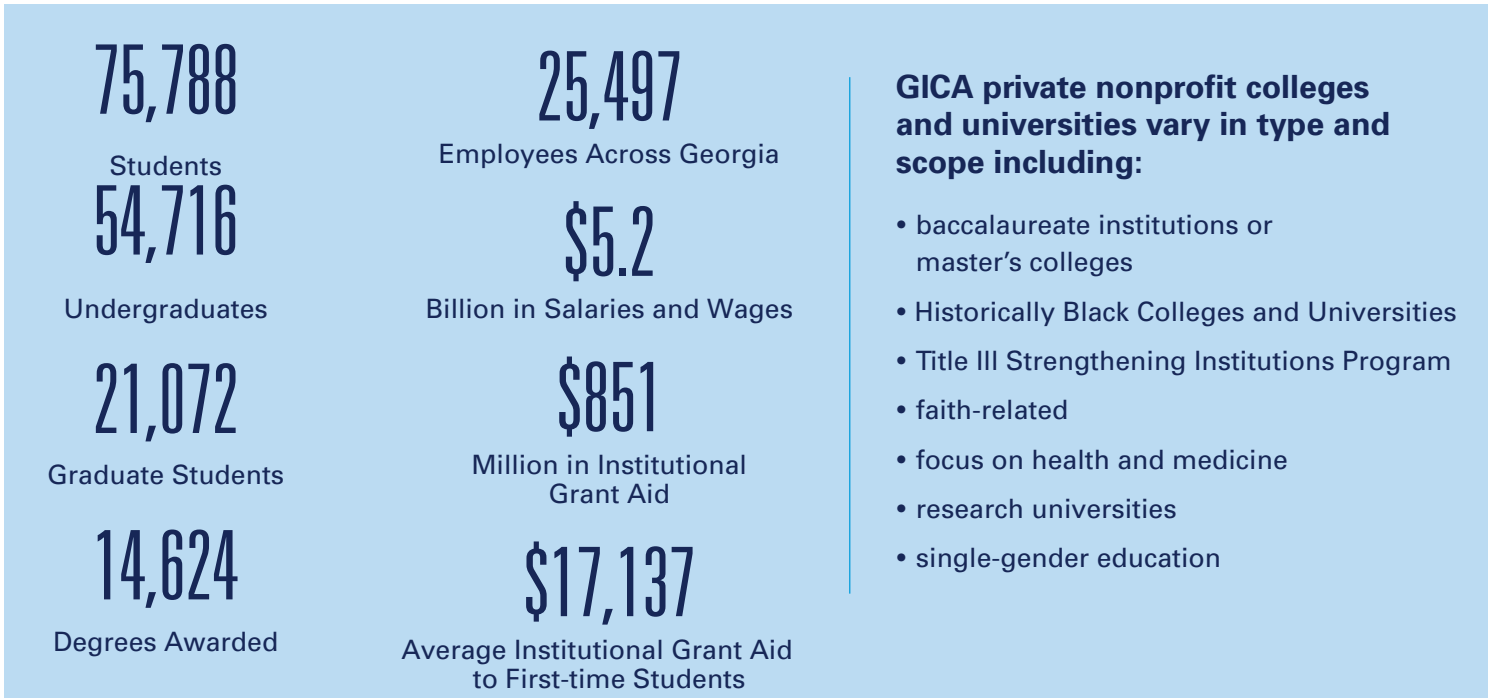
***The Fact Book of the Georgia  
Independent College Association***

# Table of Contents

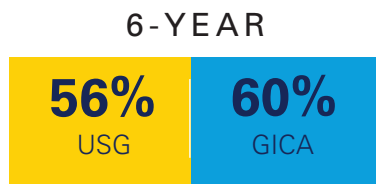
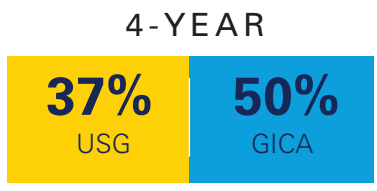
Fast Facts and Map of Institutions .....	3
GICA Highlights .....	4
Who we are: Institutional Characteristics	
Locations .....	6
Institution Classifications .....	7
Types of Educational Offerings .....	8
Education Credential Offerings .....	9
Service Member Benefits .....	10
Distance Education Programs or Courses .....	11
Non-traditional Credits .....	12
ROTC .....	13
Student Services and Special Learning Opportunities .....	14
Teacher Certification .....	15
Applications, Admissions, and Enrollees .....	16
Room and Board .....	17
Athletic Association membership .....	18
Research Expenditures .....	19
Who we serve: Enrollment	
Preliminary Fall 2024 Enrollment by Level and Attendance Status .....	21
Preliminary Fall 2024 Enrollment of First-time, Full-time Students .....	22
Preliminary Fall 2024 Undergraduate Enrollment Trend (Headcount) .....	23
Preliminary Fall 2024 Enrollment Trend (FTE) .....	24
Preliminary Fall 2024 Graduate Enrollment Trend (Headcount) .....	25
Preliminary Fall 2024 Enrollment by Gender .....	26
Preliminary Fall 2024 Enrollment by Race/Ethnicity .....	27
Preliminary Fall 2024 Enrollment by Age .....	28
What we do: Completions	
Degrees Awarded by Level .....	30
Cost	
Student Charges .....	32
Average Net Price by Family Income .....	33
Financial aid	
Total Financial Aid Package to First-time, Full-time Students .....	35
Funding to GICA Institutions .....	36
Percent of First-time, Full-time Receiving Institutional Aid .....	37
Percent Receiving Pell Grants and Average Award .....	38

# GICA FACTS

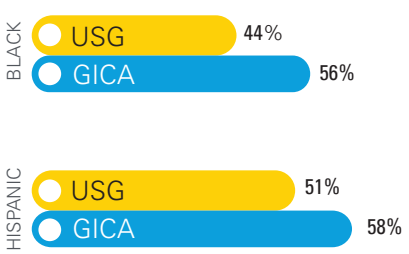
The Georgia Independent College Association is comprised of **24** private non-profit colleges and universities which enroll more than **75,000** students from every county in the state. Nearly all of GICA's colleges have been serving Georgia students and communities for over 100 years.



## GRADUATION RATE



## GEORGIA MINORITY STUDENTS 6-YEAR GRADUATION RATES



Data Sources: Georgia's Academic and Workforce Analysis and Research Data System (GA-AWARDS), the Integrated Postsecondary Education Data System (IPEDS), and the Georgia Student Finance Commission (GSFC FY).

# GICA Highlights

## Enrollment

- \* GICA institutions enrolled 75,788 students in 2023-2024, of which 54,716 were undergraduates.
- \* GICA institutions enrolled 66,498 students in Fall 2024, of which 47,959 were undergraduates.
- \* From 2014 to 2024, undergraduate enrollment in GICA member institutions increased by 17%.
- \* The student body at GICA member institutions is diverse: 56% of undergraduates report being a student of color, 60% are female, 11% of undergraduates are adult learners, and 20% attend part-time.

## Financial Aid

- \* In 2024-2025, 9,291 students received the HOPE Scholarship award, 3,084 students received the State's Zell Miller Scholarship award, and 17,557 students received the State's Tuition Equalization Grant. More than \$59 million in HOPE/Zell scholarship funds were awarded and almost \$18 million in TEG funds were distributed.
- \* The average net price of attendance for students receiving grant or scholarship aid at GICA four-year member institutions in 2023-2024 was \$24,547. Net price is the total cost of attendance after grants and scholarships are taken into account.
- \* 89% first-time, full-time students attending GICA member institutions receive some form of financial aid.
- \* The total aid awarded to first-time, full-time freshmen in 2023-2024 was \$265,059,629.
- \* GICA institutions awarded \$171,236,913 in institutional grant aid to first-time, full-time freshmen 2023-2024. This represents more than half (65%) of the total aid awarded to students. The average amount of institutional grant aid awarded to students at 4-year institutions ranged from \$2,543 to \$53,982.
- \* Nearly half of all undergraduates are recipients of the Pell grant with the typical award amount ranging from \$1,797 to \$6,461 per student.

## Completions

- \* Over 14,000 degrees were awarded by GICA member institutions in 2023-2024.
- \* Georgia's independent colleges and universities had higher graduation rates for their students compared to the State's public institutions. Fifty percent of students at GICA institutions graduated within 4 years compared to 37% of students at Georgia public colleges, and 12% of students at Georgia's for-profit colleges.
- \* GICA member institutions awarded 768 Associate Degrees, 7,938 Bachelor's Degrees, 4,253 Master's Degrees, and 1,669 Doctoral Degrees in 2023-2024.

# Institutional Characteristics

## Institution Location

	City	County
Agnes Scott College	Decatur	DeKalb County
Andrew College	Cuthbert	Randolph County
Berry College	Mount Berry	Floyd County
Brenau University	Gainesville	Hall County
Brewton-Parker Christian University	Mount Vernon	Montgomery County
Clark Atlanta University	Atlanta	Fulton County
Covenant College	Lookout Mountain	Dade County
Emmanuel University	Franklin Springs	Franklin County
Emory University	Atlanta	DeKalb County
Emory University-Oxford College	Oxford	Newton County
LaGrange College	Lagrange	Troup County
Life University	Marietta	Cobb County
Mercer University	Macon	Bibb County
Morehouse College	Atlanta	Fulton County
Oglethorpe University	Atlanta	DeKalb County
Piedmont University	Demorest	Habersham County
Point University	West Point	Troup County
Reinhardt University	Waleska	Cherokee County
Shorter University	Rome	Floyd County
Spelman College	Atlanta	Fulton County
Thomas University	Thomasville	Thomas County
Toccoa Falls College	Toccoa Falls	Stephens County
Truett McConnell University	Cleveland	White County
Wesleyan College	Macon	Bibb County
Young Harris College	Young Harris	Towns County

<b>Institution Classifications</b>			
	<b>HBCU</b>	<b>Highest level of offering</b>	<b>Carnegie Classification 2018: Basic (HD2020)</b>
Agnes Scott College		Master's degree	Baccalaureate Colleges: Arts & Sciences Focus
Andrew College		Bachelor's degree	Baccalaureate/Associate's Colleges: Associate's Dominant
Berry College		Master's degree	Master's Colleges & Universities: Small Programs
Brenau University		Doctor's degree	Doctoral/Professional Universities
Brewton-Parker Christian University		Master's degree	Baccalaureate Colleges: Diverse Fields
Clark Atlanta University	Yes	Doctor's degree	Doctoral Universities: High Research Activity
Covenant College		Master's degree	Baccalaureate Colleges: Arts & Sciences Focus
Emmanuel University		Master's degree	Baccalaureate Colleges: Diverse Fields
Emory University		Doctor's degree	Doctoral Universities: Very High Research Activity
Emory University-Oxford College		Associate's degree	Associate's Colleges: High Transfer-High Traditional
LaGrange College		Doctor's degree	Baccalaureate Colleges: Diverse Fields
Life University		Doctor's degree	Master's Colleges & Universities: Larger Programs
Mercer University		Doctor's degree	Doctoral Universities: High Research Activity
Morehouse College	Yes	Bachelor's degree	Baccalaureate Colleges: Arts & Sciences Focus
Oglethorpe University		Master's degree	Baccalaureate Colleges: Arts & Sciences Focus
Piedmont University		Doctor's degree	Master's Colleges & Universities: Larger Programs
Point University		Master's degree	Baccalaureate Colleges: Diverse Fields
Reinhardt University		Master's degree	Baccalaureate Colleges: Diverse Fields
Shorter University		Master's degree	Master's Colleges & Universities: Small Programs
Spelman College	Yes	Bachelor's degree	Baccalaureate Colleges: Arts & Sciences Focus
Thomas University		Post-master's certificate	Master's Colleges & Universities: Medium Programs
Toccoa Falls College		Master's degree	Baccalaureate Colleges: Diverse Fields
Truett McConnell University		Doctor's degree	Baccalaureate Colleges: Diverse Fields
Wesleyan College		Master's degree	Baccalaureate Colleges: Diverse Fields
Young Harris College		Master's degree	Baccalaureate Colleges: Arts & Sciences Focus

Source: Integrated Postsecondary Education Data System, Institutional Characteristics Survey

## Types of Educational Offerings

	Occupational	Academic	Continuing professional	Adult basic remedial or high school equivalent
Agnes Scott College		✓		
Andrew College		✓		
Berry College		✓		
Brenau University		✓	✓	
Brewton-Parker Christian University		✓		
Clark Atlanta University		✓		
Covenant College		✓		
Emmanuel University		✓		
Emory University	✓	✓	✓	
Emory University-Oxford College		✓		
LaGrange College		✓		
Life University		✓	✓	
Mercer University		✓	✓	
Morehouse College		✓		
Oglethorpe University		✓		
Piedmont University		✓		
Point University		✓		
Reinhardt University		✓		
Shorter University		✓		
Spelman College		✓		
Thomas University		✓	✓	✓
Toccoa Falls College		✓		
Truett McConnell University		✓		
Wesleyan College		✓	✓	
Young Harris College		✓		

Source: Integrated Postsecondary Education Data System, Institutional Characteristics Survey

### Education Credential Offerings

	Certificate of less than 12 weeks	Certificate of at least 12 weeks but less than 1 year	Certificate of at least 1 year but less than 2 years	Associate's degree	Certificate of at least 2 years but less than 4 years	Bachelor's degree	Post-baccalaureate certificate	Master's degree	Post-master's certificate	Doctor's degree - research/scholarship	Doctor's degree - professional practice	Doctor's degree - other
Agnes Scott College						✓	✓	✓				
Andrew College		✓	✓	✓		✓						
Berry College						✓		✓				
Brenau University		✓		✓		✓		✓	✓		✓	✓
Brewton-Parker Christian University			✓	✓		✓		✓				
Clark Atlanta University						✓	✓	✓	✓	✓		
Covenant College						✓		✓				
Emmanuel University				✓		✓		✓				
Emory University		✓			✓	✓	✓	✓	✓	✓	✓	
Emory University-Oxford College				✓								
LaGrange College				✓		✓	✓	✓		✓		
Life University				✓		✓		✓			✓	
Mercer University						✓	✓	✓	✓	✓	✓	✓
Morehouse College						✓						
Oglethorpe University		✓				✓		✓				
Piedmont University		✓				✓		✓	✓	✓		
Point University		✓		✓		✓		✓				
Reinhardt University				✓		✓		✓				
Shorter University			✓	✓		✓		✓				
Spelman College	✓	✓				✓						
Thomas University				✓		✓	✓	✓	✓			
Toccoa Falls College		✓	✓	✓		✓	✓	✓				
Truett McConnell University						✓	✓	✓				
Wesleyan College						✓	✓	✓				
Young Harris College			✓			✓		✓				

Source: Integrated Postsecondary Education Data System, Institutional Characteristics Survey

## Servicemember Benefits

	Yellow Ribbon Program (officially known as Post-9/11 GI Bill Yellow Ribbon Program)	Credit for military training	Dedicated point of contact for support services for veterans military service-members and their families	Recognized student veteran organization	Member of Service-members Opportunity Colleges
Agnes Scott College	✓		✓		
Andrew College	✓		✓		
Berry College	✓				
Brenau University	✓	✓	✓	✓	✓
Brewton-Parker Christian University	✓	✓	✓		
Clark Atlanta University	✓		✓		
Covenant College	✓				
Emmanuel University	✓	✓	✓		✓
Emory University	✓			✓	
Emory University-Oxford College	✓				
LaGrange College	✓	✓	✓		
Life University	✓				
Mercer University	✓	✓	✓		✓
Morehouse College			✓		✓
Oglethorpe University	✓		✓		✓
Piedmont University	✓	✓			
Point University	✓	✓			✓
Reinhardt University	✓	✓			✓
Shorter University	✓	✓	✓		
Spelman College					
Thomas University	✓	✓	✓	✓	✓
Toccoa Falls College	✓	✓			
Truett McConnell University	✓				
Wesleyan College	✓	✓	✓		✓
Young Harris College	✓		✓		

Source: Integrated Postsecondary Education Data System, Institutional Characteristics Survey

## Distance Education Programs or Courses

	Undergraduate level	Graduate level
Agnes Scott College	✓	✓
Andrew College	✓	
Berry College	✓	✓
Brenau University	✓	✓
Brewton-Parker Christian University	✓	✓
Clark Atlanta University	✓	✓
Covenant College		✓
Emmanuel University	✓	✓
Emory University	✓	✓
Emory University-Oxford College	✓	
LaGrange College	✓	✓
Life University	✓	✓
Mercer University	✓	✓
Morehouse College	✓	
Oglethorpe University	✓	✓
Piedmont University	✓	✓
Point University	✓	✓
Reinhardt University	✓	✓
Shorter University	✓	✓
Spelman College	✓	
Thomas University	✓	✓
Toccoa Falls College	✓	✓
Truett McConnell University	✓	✓
Wesleyan College	✓	✓
Young Harris College	✓	✓

Source: Integrated Postsecondary Education Data System, Institutional Characteristics Survey

<b>Non-traditional Credits</b>		
	<b>Credit for life experiences</b>	<b>Advanced placement (AP) credits</b>
Agnes Scott College		✓
Andrew College		✓
Berry College		✓
Brenau University	✓	✓
Brewton-Parker Christian University	✓	✓
Clark Atlanta University	✓	✓
Covenant College		✓
Emmanuel University		✓
Emory University		✓
Emory University-Oxford College		✓
LaGrange College	✓	✓
Life University		✓
Mercer University		✓
Morehouse College		✓
Oglethorpe University		✓
Piedmont University	✓	✓
Point University	✓	✓
Reinhardt University	✓	✓
Shorter University		✓
Spelman College		✓
Thomas University	✓	✓
Toccoa Falls College		✓
Truett McConnell University		✓
Wesleyan College	✓	✓
Young Harris College		✓

*Source: Integrated Postsecondary Education Data System, Institutional Characteristics Survey*

ROTC				
	ROTC	ROTC - Army	ROTC - Navy	ROTC - Air Force
Agnes Scott College	✓	✓		✓
Andrew College				
Berry College				
Brenau University				
Brewton-Parker Christian University				
Clark Atlanta University	✓	✓	✓	✓
Covenant College	✓	✓		
Emmanuel University				
Emory University				
Emory University-Oxford College				
LaGrange College				
Life University				
Mercer University	✓	✓		
Morehouse College	✓	✓	✓	✓
Oglethorpe University				
Piedmont University				
Point University				
Reinhardt University				
Shorter University				
Spelman College	✓	✓	✓	✓
Thomas University				
Toccoa Falls College				
Truett McConnell University				
Wesleyan College				
Young Harris College				

Source: Integrated Postsecondary Education Data System, Institutional Characteristics Survey

<b>Student Services and Special Learning Opportunities</b>						
	<b>Study abroad</b>	<b>Weekend/ evening college</b>	<b>Academic/ career counseling service</b>	<b>Employment services for students</b>	<b>Placement services for completers</b>	<b>On-campus day care for students' children</b>
Agnes Scott College	✓	✓	✓	✓	✓	
Andrew College	✓		✓	✓		
Berry College	✓		✓	✓	✓	
Brenau University	✓	✓	✓	✓	✓	
Brewton-Parker Christian University			✓	✓		
Clark Atlanta University	✓	✓	✓	✓	✓	
Covenant College	✓		✓	✓	✓	
Emmanuel University			✓			
Emory University	✓	✓	✓	✓	✓	✓
Emory University-Oxford College	✓		✓	✓		
LaGrange College	✓	✓	✓	✓	✓	
Life University			✓	✓	✓	
Mercer University	✓	✓	✓	✓	✓	
Morehouse College	✓		✓	✓	✓	
Oglethorpe University	✓	✓	✓	✓	✓	
Piedmont University	✓	✓	✓	✓		
Point University		✓	✓	✓		
Reinhardt University	✓	✓	✓	✓		
Shorter University	✓		✓	✓	✓	
Spelman College	✓		✓	✓	✓	
Thomas University		✓	✓	✓		
Toccoa Falls College	✓		✓	✓	✓	
Truett McConnell University			✓			
Wesleyan College	✓		✓	✓	✓	
Young Harris College	✓		✓	✓	✓	

Source: Integrated Postsecondary Education Data System, Institutional Characteristics Survey

## Teacher Certification

	Teacher certification (below the postsecondary level)	Teacher certification: Students can complete their preparation in certain areas of specialization	Teacher certification: Students must complete their preparation at another institution for certain areas of specialization	Teacher certification: Approved by the state for initial certification or licensure of teachers
Agnes Scott College				
Andrew College				
Berry College	✓	✓		✓
Brenau University	✓	✓		✓
Brewton-Parker Christian University	✓	✓		✓
Clark Atlanta University	✓	✓		
Covenant College	✓	✓		✓
Emmanuel University	✓			✓
Emory University				
Emory University-Oxford College				
LaGrange College	✓			✓
Life University				
Mercer University	✓	✓		✓
Morehouse College	✓		✓	
Oglethorpe University				
Piedmont University	✓			✓
Point University	✓			✓
Reinhardt University	✓	✓		✓
Shorter University	✓	✓		✓
Spelman College	✓	✓		✓
Thomas University	✓	✓		✓
Toccoa Falls College	✓	✓		✓
Truett McConnell University	✓			✓
Wesleyan College	✓	✓		✓
Young Harris College	✓			✓

Source: Integrated Postsecondary Education Data System, Institutional Characteristics Survey

<b>Food and Housing</b>		
	<b>Number of meals per week in board charge</b>	<b>Total dormitory capacity</b>
Agnes Scott College	21	800
Andrew College	20	370
Berry College		1979
Brenau University	19	452
Brewton-Parker Christian University	22	594
Clark Atlanta University	41	2412
Covenant College	21	902
Emmanuel University	20	591
Emory University		4813
Emory University-Oxford College		971
LaGrange College	21	526
Life University		661
Mercer University		3150
Morehouse College		1436
Oglethorpe University		737
Piedmont University	19	1019
Point University		375
Reinhardt University	19	727
Shorter University	21	767
Spelman College	21	1626
Thomas University	19	220
Toccoa Falls College		568
Truett McConnell University	19	694
Wesleyan College	19	546
Young Harris College		1040

Source: Integrated Postsecondary Education Data System, Institutional Characteristics Survey

## Athletic Association Membership

	Member of National Collegiate Athletic Association (NCAA)	Member of National Association of Intercollegiate Athletics (NAIA)	Member of National Junior College Athletic Association (NJCAA)	Member of National Christian College Athletic Association (NCCAA)
Agnes Scott College	✓			
Andrew College			✓	
Berry College	✓			
Brenau University		✓		
Brewton-Parker Christian University		✓		✓
Clark Atlanta University	✓			
Covenant College	✓			
Emmanuel University	✓			
Emory University	✓			
Emory University-Oxford College			✓	
LaGrange College	✓			
Life University		✓		
Mercer University	✓			
Morehouse College	✓			
Oglethorpe University	✓			
Piedmont University	✓			
Point University		✓		
Reinhardt University		✓		
Shorter University	✓			
Spelman College				
Thomas University		✓		
Toccoa Falls College				✓
Truett McConnell University		✓		
Wesleyan College	✓			
Young Harris College	✓			

Source: Integrated Postsecondary Education Data System, Institutional Characteristics Survey

## Research Expenditures

	2019-2020	2020-2021	2021-2022	2022-2023	2023-2024	% Change
Agnes Scott College	\$0	\$0	\$0	\$0	\$0	
Andrew College	\$0	\$0	\$0	\$0	\$0	
Berry College	\$381,722	\$373,891	\$404,506	\$435,721	\$444,492	16%
Brenau University	\$0	\$0	\$0	\$0	\$0	
Brewton-Parker Christian University	\$0	\$0	\$0	\$0	\$0	
Clark Atlanta University	\$7,826,073	\$8,362,822	\$9,409,491	\$9,719,381	\$11,909,281	52%
Covenant College	\$0	\$0	\$0	\$0	\$0	
Emmanuel University	\$0	\$0	\$0	\$0	\$0	
Emory University	\$572,460,000	\$605,155,000	\$688,256,000	\$798,401,000	\$910,987,000	59%
Emory University-Oxford College	\$89,000	\$205,000	\$240,000	\$144,000	\$68,000	-24%
LaGrange College	\$0	\$0	\$0	\$0	\$0	
Life University	\$541,407	\$715,041	\$1,004,743	\$1,143,366	\$1,143,046	111%
Mercer University	\$44,981,472	\$45,215,906	\$44,826,927	\$41,425,064	\$44,331,262	-1%
Morehouse College	\$4,418,513	\$3,961,757	\$6,030,482	\$5,934,426	\$6,050,805	37%
Oglethorpe University	\$0	\$0	\$0	\$0	\$0	
Piedmont University	\$0	\$0	\$0	\$0	\$0	
Point University	\$0	\$0	\$0	\$0	\$0	
Reinhardt University	\$0	\$0	\$0	\$0	\$0	
Shorter University	\$0	\$0	\$0	\$0	\$0	
Spelman College	\$3,791,125	\$3,396,051	\$3,567,811	\$4,530,676	\$5,860,505	55%
Thomas University	\$0	\$0	\$0	\$0	\$0	
Toccoa Falls College	\$0	\$0	\$0	\$0	\$0	
Truett McConnell University	\$0	\$0	\$0	\$0	\$0	
Wesleyan College	\$0	\$0	\$0	\$0	\$0	
Young Harris College	\$0	\$0	\$0	\$0	\$0	
<b>Total</b>	<b>\$652,254,312</b>	<b>\$667,385,468</b>	<b>\$753,739,960</b>	<b>\$861,733,634</b>	<b>\$980,794,391</b>	<b>50%</b>

Source: Integrated Postsecondary Education Data System, Finance Survey

## Preliminary Fall 2024 Enrollment by Level of Student and Attendance Status

	Undergraduate			Graduate			All Students		
	Full-time	Part-time	Total	Full-time	Part-time	Total	Full-time	Part-time	Total
Agnes Scott College	837	6	843	217	19	236	1,054	25	1,079
Andrew College	385	111	496				385	111	496
Berry College	2,229	25	2,254	64	166	230	2,293	191	2,484
Brenau University	875	398	1,273	836	327	1,163	1,711	725	2,436
Brewton-Parker Christian University	625	609	1,234	40	64		665	673	1,338
Clark Atlanta University	3,530	88	3,618	432	202	634	3,962	290	4,252
Covenant College	929	158	1,087	12	1	13	941	159	1,100
Emmanuel University	761	125	886	40	24	64	801	149	950
Emory University	7,312	95	7,407	6,332	1,436	7,768	13,644	1,531	15,175
Emory University-Oxford College	966	1	967				966	1	967
LaGrange College	636	15	651	155	7	162	791	22	813
Life University	786	113	899	1,621	194	1,815	2,407	307	2,714
Mercer University	4,077	613	4,690	3,278	1,228	4,506	7,355	1,841	9,196
Morehouse College	2,576	271	2,847				2,576	271	2,847
Oglethorpe University	1,332	64	1,396	16	13		1,348	77	1,425
Piedmont University	1,067	92	1,159	295	403	698	1,362	495	1,857
Point University	1,212	785	1,997	188	75	263	1,400	860	2,260
Reinhardt University	1,060	69	1,129	77	27	104	1,137	96	1,233
Shorter University	983	220	1,203	85	30	115	1,068	250	1,318
Spelman College	2,657	760	3,417				2,657	760	3,417
Thomas University	583	439	1,022	220	229	449	803	668	1,471
Toccoa Falls College	994	2,019	3,013	31	23	54	1,025	2,042	3,067
Truett McConnell University	742	1,782	2,524	55	36	91	797	1,818	2,615
Wesleyan College	359	137	496	30	5	35	389	142	531
Young Harris College	775	676	1,451	6		6	781	676	1,457
<b>Total</b>	<b>38,288</b>	<b>9,671</b>	<b>47,959</b>	<b>14,030</b>	<b>4,509</b>	<b>18,539</b>	<b>52,318</b>	<b>14,180</b>	<b>66,498</b>

Source: Integrated Postsecondary Education Data System, Fall Enrollment Survey

Fall 2024 data is considered preliminary.

# Enrollment

<b>Preliminary Enrollment First-time, Full-time Degree/Certificate-Seeking Students</b>						
	<b>Fall 2020</b>	<b>Fall 2021</b>	<b>Fall 2022</b>	<b>Fall 2023</b>	<b>Fall 2024</b>	<b>% Change</b>
Agnes Scott College	274	301	276	241	210	-23%
Andrew College	105	91	87	107	255	143%
Berry College	618	729	634	576	616	0%
Brenau University	160	156	215	198	276	73%
Brewton-Parker Christian University	224	201	213	196	240	7%
Clark Atlanta University	753	1,108	1,120	1,065	994	32%
Covenant College	196	250	237	246	282	44%
Emmanuel University	218	242	188	203	236	8%
Emory University	1,343	1,494	1,424	1,425	1,437	7%
Emory University-Oxford College	489	593	422	521	429	-12%
LaGrange College	174	129	220	183	235	35%
Life University	182	170	163	199	217	19%
Mercer University	865	947	897	1,014	826	-5%
Morehouse College	523	619	671	680	683	31%
Oglethorpe University	418	404	425	390	345	-17%
Piedmont University	249	246	301	285	238	-4%
Point University	146	145	241	259	171	17%
Reinhardt University	289	212	272	315	333	15%
Shorter University	300	309	265	267	288	-4%
Spelman College	569	794	577	727	701	23%
Thomas University	75	91	99	141	100	33%
Toccoa Falls College	197	166	227	208	248	26%
Truett McConnell University	266	239	216	215	241	-9%
Wesleyan College	139	111	122	100	105	-24%
Young Harris College	334	303	253	243	220	-34%
<b>Total</b>	<b>9,106</b>	<b>10,050</b>	<b>9,765</b>	<b>10,004</b>	<b>9,926</b>	<b>9%</b>

Source: Integrated Postsecondary Education Data System, Fall Enrollment Survey

Fall 2024 data is considered preliminary.

### Fall Undergraduate Enrollment Trend (Headcount)

	Fall 2014	Fall 2015	Fall 2016	Fall 2017	Fall 2018	Fall 2019	Fall 2020	Fall 2021	Fall 2022	Fall 2023	Fall 2024	% Change
Agnes Scott College	873	902	927	921	996	1,005	1,014	1,063	1,006	911	843	-3%
Andrew College	303	311	276	285	293	289	301	272	247	294	496	64%
Berry College	2,085	2,123	2,073	1,978	1,936	1,943	2,006	2,172	2,243	2,226	2,254	8%
Brenau University	1,596	1,572	1,653	1,736	1,754	1,754	1,710	1,427	1,368	1,195	1,273	-20%
Brewton-Parker Christian University	638	616	785	783	826	888	835	893	911	1,049	1,234	93%
Clark Atlanta University	2,567	2,741	3,093	3,302	3,325	3,318	3,096	3,390	3,427	3,495	3,618	41%
Covenant College	1,105	1,044	1,005	1,030	1,002	946	865	872	847	908	1,087	-2%
Emmanuel University	816	884	920	953	920	958	883	918	840	861	886	9%
Emory University	7,829	6,867	6,861	6,937	7,086	7,118	7,010	7,130	7,101	7,359	7,407	-5%
Emory University-Oxford College		936	978	979	993	983	947	1,067	1,048	973	967	-1%
LaGrange College	880	912	906	937	877	872	750	583	607	582	651	-26%
Life University	774	721	718	755	898	879	941	921	915	873	899	16%
Mercer University	4,570	4,667	4,706	4,747	4,797	4,865	4,911	4,941	4,859	4,807	4,690	3%
Morehouse College	2,109	2,167	2,108	2,202	2,206	2,238	2,152	2,554	2,567	2,738	2,847	35%
Oglethorpe University	1,094	1,155	1,184	1,250	1,264	1,385	1,452	1,446	1,491	1,499	1,396	28%
Piedmont University	1,286	1,284	1,295	1,281	1,263	1,283	1,278	1,255	1,245	1,261	1,159	-10%
Point University	1,522	1,582	1,954	1,926	2,213	2,340	1,916	1,641	1,943	2,617	1,997	31%
Reinhardt University	1,334	1,262	1,374	1,408	1,473	1,430	1,292	1,096	1,059	1,082	1,129	-15%
Shorter University	2,137	1,795	1,652	1,516	1,374	1,394	1,306	1,332	1,373	1,322	1,203	-44%
Spelman College	2,135	2,144	2,125	2,137	2,171	2,120	2,207	2,417	3,102	3,633	3,417	60%
Thomas University	870	804	769	1,118	717	947	732	763	793	882	1,022	17%
Toccoa Falls College	920	937	1,252	1,411	1,656	1,833	1,677	1,735	2,008	2,489	3,013	228%
Truett McConnell University	1,663	1,997	2,152	2,573	2,919	2,983	2,826	2,605	2,683	2,612	2,524	52%
Wesleyan College	661	660	630	564	725	754	745	695	614	595	496	-25%
Young Harris College	1,218	1,204	1,200	1,202	1,425	1,402	1,396	1,388	1,496	1,403	1,451	19%
<b>Total</b>	<b>40,985</b>	<b>41,287</b>	<b>42,596</b>	<b>43,931</b>	<b>45,109</b>	<b>45,927</b>	<b>44,248</b>	<b>44,576</b>	<b>45,793</b>	<b>47,666</b>	<b>47,959</b>	<b>17%</b>

Source: Integrated Postsecondary Education Data System, Fall Enrollment Survey

Fall 2024 data is considered preliminary.

### Fall Enrollment Trend (FTE)

	Fall 2014	Fall 2015	Fall 2016	Fall 2017	Fall 2018	Fall 2019	Fall 2020	Fall 2021	Fall 2022	Fall 2023	Fall 2024	% Change
Agnes Scott College	857	886	921	916	1,010	1,030	1,045	1,082	1,089	1,056	1,064	24%
Andrew College	298	306	270	250	240	228	248	228	210	250	429	44%
Berry College	2,117	2,173	2,120	2,019	1,965	1,981	2,068	2,248	2,299	2,296	2,366	12%
Brenau University	2,089	2,165	2,046	2,084	2,037	2,040	2,124	1,979	2,084	1,918	1,992	-5%
Brewton-Parker Christian University	521	469	559	574	600	638	653	684	708	775	929	78%
Clark Atlanta University	3,240	3,430	3,676	3,779	3,732	3,766	3,575	3,828	3,785	3,954	4,074	26%
Covenant College	1,128	1,068	1,031	1,036	1,023	949	869	869	850	890	1,003	-11%
Emmanuel University	760	807	845	873	854	880	816	821	768	793	859	13%
Emory University	13,896	12,921	13,088	13,255	13,498	13,483	13,216	13,918	13,916	14,132	14,230	2%
Emory University-Oxford College		934	977	977	991	982	943	1,066	1,048	973	966	-1%
LaGrange College	905	977	976	1,003	979	963	827	627	663	653	800	-12%
Life University	2,485	2,466	2,443	2,397	2,520	2,527	2,539	2,533	2,514	2,520	2,526	2%
Mercer University	7,398	7,434	7,506	7,618	7,734	7,693	7,852	7,877	7,712	7,908	8,065	9%
Morehouse College	2,045	2,107	2,055	2,134	2,170	2,182	2,065	2,337	2,335	2,517	2,682	31%
Oglethorpe University	1,058	1,102	1,141	1,199	1,232	1,350	1,403	1,403	1,442	1,464	1,378	30%
Piedmont University	1,754	1,771	1,829	1,859	1,973	1,955	1,896	1,670	1,488	1,505	1,552	-12%
Point University	1,310	1,345	1,609	1,446	1,560	1,638	1,238	1,092	1,294	1,815	1,737	33%
Reinhardt University	1,339	1,266	1,389	1,397	1,434	1,397	1,295	1,130	1,067	1,105	1,174	-12%
Shorter University	2,247	1,787	1,598	1,437	1,285	1,298	1,244	1,312	1,308	1,253	1,166	-48%
Spelman College	2,097	2,111	2,086	2,106	2,142	2,096	2,161	2,384	2,631	2,965	2,956	41%
Thomas University	803	811	806	1,044	968	1,045	978	1,087	1,120	1,184	1,063	32%
Toccoa Falls College	835	813	973	1,084	1,191	1,273	1,205	1,196	1,346	1,571	1,827	119%
Truett McConnell University	1,122	1,246	1,319	1,519	1,748	1,740	1,704	1,611	1,643	1,580	1,511	35%
Wesleyan College	607	617	584	498	618	628	630	587	537	520	445	-27%
Young Harris College	1,199	1,173	1,145	1,088	1,157	1,119	1,129	1,111	1,136	1,065	1,047	-13%
<b>Total</b>	<b>52,110</b>	<b>52,185</b>	<b>52,992</b>	<b>53,592</b>	<b>54,661</b>	<b>54,881</b>	<b>53,723</b>	<b>54,680</b>	<b>54,993</b>	<b>56,662</b>	<b>57,841</b>	<b>11%</b>

Source: Integrated Postsecondary Education Data System, Fall Enrollment Survey

Fall 2024 data is considered preliminary.

## Fall Graduate Enrollment Trend (Headcount)

	Fall 2014	Fall 2015	Fall 2016	Fall 2017	Fall 2018	Fall 2019	Fall 2020	Fall 2021	Fall 2022	Fall 2023	Fall 2024	% Change
Agnes Scott College					34	62	66	46	108	166	236	594%
Andrew College												
Berry College	92	122	101	132	78	91	119	131	117	144	230	150%
Brenau University	1,193	1,311	1,246	1,196	1,088	1,063	1,103	1,124	1,336	1,225	1,163	-3%
Brewton-Parker Christian University										74	104	41%
Clark Atlanta University	918	920	791	690	586	602	680	665	573	640	634	-31%
Covenant College	68	58	53	38	44	43	46	42	39	20	13	-81%
Emmanuel University									10	35	64	83%
Emory University	6,940	6,921	7,206	7,326	7,372	7,297	6,987	7,649	7,740	7,687	7,768	12%
Emory University-Oxford College												
LaGrange College	84	116	120	112	152	123	104	60	72	89	162	93%
Life University	1,980	1,989	1,974	1,864	1,848	1,845	1,820	1,866	1,838	1,838	1,815	-8%
Mercer University	3,982	3,933	3,909	3,906	3,943	3,875	4,095	4,068	4,030	4,317	4,506	13%
Morehouse College												
Oglethorpe University										23	29	26%
Piedmont University	834	980	971	1,080	1,186	1,227	1,072	805	598	579	698	-16%
Point University			32	26	35	49	30	25	72	210	263	777%
Reinhardt University	88	102	110	100	93	91	107	119	82	88	104	18%
Shorter University	244	200	165	156	113	93	104	128	142	125	115	-53%
Spelman College												
Thomas University	268	378	387	483	593	581	571	625	738	701	449	68%
Toccoa Falls College							21	29	38	43	54	86%
Truett McConnell University	18	20	35	49	82	72	97	105	113	102	91	355%
Wesleyan College	50	48	46	39	40	43	34	39	46	46	35	-30%
Young Harris College						13	21	19	15	17	6	-71%
<b>Total</b>	<b>16,759</b>	<b>17,098</b>	<b>17,146</b>	<b>17,197</b>	<b>17,287</b>	<b>17,170</b>	<b>17,077</b>	<b>17,545</b>	<b>17,707</b>	<b>18,169</b>	<b>18,539</b>	<b>11%</b>

Source: Integrated Postsecondary Education Data System, Fall Enrollment Survey

Fall 2024 data is considered preliminary.

## Preliminary Fall 2024 Enrollment by Gender

	Undergraduate Total					Graduate and First Professional				
	Men #	Men %	Women #	Women %	Total #	Men #	Men %	Women #	Women %	Total #
Agnes Scott College	0	0%	843	100%	843	12	5%	224	95%	236
Andrew College	291	59%	205	41%	496					
Berry College	848	38%	1,406	62%	2,254	55	24%	175	76%	230
Brenau University	165	13%	1,108	87%	1,273	172	15%	991	85%	1,163
Brewton-Parker Christian University	709	57%	525	43%	1,234	85	82%	19	18%	104
Clark Atlanta University	825	23%	2,793	77%	3,618	195	31%	439	69%	634
Covenant College	520	48%	567	52%	1,087	6	46%	7	54%	13
Emmanuel University	481	54%	405	46%	886	27	42%	37	58%	64
Emory University	3,203	43%	4,204	57%	7,407	2,776	36%	4,992	64%	7,768
Emory University-Oxford College	444	46%	523	54%	967					
LaGrange College	359	55%	292	45%	651	29	18%	133	82%	162
Life University	440	49%	459	51%	899	916	50%	899	50%	1,815
Mercer University	1,626	35%	3,064	65%	4,690	1,472	33%	3,034	67%	4,506
Morehouse College	2,846	100%	1	0%	2,847					
Oglethorpe University	519	37%	877	63%	1,396	19	66%	10	34%	29
Piedmont University	389	34%	770	66%	1,159	122	17%	576	83%	698
Point University	1,011	51%	986	49%	1,997	132	50%	131	50%	263
Reinhardt University	592	52%	537	48%	1,129	44	42%	60	58%	104
Shorter University	592	49%	611	51%	1,203	54	47%	61	53%	115
Spelman College	170	5%	3,247	95%	3,417					
Thomas University	427	42%	595	58%	1,022	83	18%	366	82%	449
Toccoa Falls College	1,136	38%	1,877	62%	3,013	16	30%	38	70%	54
Truett McConnell University	1,184	47%	1,340	53%	2,524	54	59%	37	41%	91
Wesleyan College	30	6%	466	94%	496	2	6%	33	94%	35
Young Harris College	607	42%	844	58%	1,451	2	33%	4	67%	6
<b>Total</b>	<b>19,414</b>	<b>40%</b>	<b>28,545</b>	<b>60%</b>	<b>47,959</b>	<b>6,273</b>	<b>34%</b>	<b>12,266</b>	<b>66%</b>	<b>18,539</b>

Source: Integrated Postsecondary Education Data System, Fall Enrollment Survey

Fall 2024 data is considered preliminary.

### Preliminary Undergraduate Fall 2024 Enrollment by Race/Ethnicity

	American Indian or Alaska Native		Asian		Black or African American		Hispanic		Native Hawaiian or Other Pacific Islander		White		Two or more races		Race/ethnicity unknown		U.S. Nonresident		Grand total
	#	%	#	%	#	%	#	%	#	%	#	%	#	%	#	%	#	%	
Agnes Scott College	1	0%	33	4%	267	32%	115	14%	2	0%	337	40%	52	6%	13	2%	23	3%	843
Andrew College	5	1%	1	0%	256	52%	40	8%	2	0%	142	29%	1	0%	42	8%	7	1%	496
Berry College	4	0%	56	2%	192	9%	253	11%	1	0%	1,613	72%	99	4%	24	1%	12	1%	2,254
Brenau University	1	0%	34	3%	259	20%	295	23%	2	0%	545	43%	57	4%	18	1%	62	5%	1,273
Brewton-Parker Christian University	9	1%	14	1%	327	26%	111	9%	3	0%	666	54%	38	3%	29	2%	37	3%	1,234
Clark Atlanta University	4	0%	2	0%	1,956	54%	44	1%	0	0%	11	0%	201	6%	1,389	38%	11	0%	3,618
Covenant College	5	0%	36	3%	28	3%	43	4%	1	0%	906	83%	19	2%	9	1%	40	4%	1,087
Emmanuel University	2	0%	11	1%	115	13%	61	7%	3	0%	523	59%	59	7%	0	0%	112	13%	886
Emory University	4	0%	1,834	25%	762	10%	885	12%	1	0%	2,196	30%	306	4%	181	2%	1,238	17%	7,407
Emory University-Oxford College	0	0%	323	33%	70	7%	104	11%	0	0%	257	27%	45	5%	30	3%	138	14%	967
LaGrange College	4	1%	5	1%	187	29%	46	7%	1	0%	366	56%	31	5%	1	0%	11	2%	652
Life University	27	3%	19	2%	248	28%	163	18%	0	0%	249	28%	5	1%	34	4%	154	17%	899
Mercer University	6	0%	388	8%	1,553	33%	426	9%	4	0%	1,870	40%	190	4%	129	3%	124	3%	4,690
Morehouse College	1	0%	2	0%	2,769	97%	6	0%	0	0%	2	0%	57	2%	0	0%	10	0%	2,847
Oglethorpe University	3	0%	49	4%	279	20%	421	30%	0	0%	388	28%	54	4%	159	11%	43	3%	1,396
Piedmont University	7	1%	10	1%	172	15%	140	12%	1	0%	738	64%	38	3%	42	4%	11	1%	1,159
Point University	7	0%	42	2%	314	16%	268	13%	1	0%	1,102	55%	50	3%	198	10%	15	1%	1,997
Reinhardt University	7	1%	17	2%	243	22%	104	9%	1	0%	643	57%	7	1%	55	5%	52	5%	1,129
Shorter University	5	0%	8	1%	241	20%	116	10%	2	0%	659	55%	40	3%	105	9%	27	2%	1,203
Spelman College	43	1%	69	2%	2,925	86%	31	1%	9	0%	173	5%	57	2%	94	3%	16	0%	3,417
Thomas University	10	1%	16	2%	397	39%	57	6%	18	2%	353	35%	1	0%	144	14%	26	3%	1,022
Toccoa Falls College	8	0%	78	3%	336	11%	259	9%	1	0%	2,115	70%	77	3%	54	2%	85	3%	3,013
Truett McConnell University	15	1%	53	2%	298	12%	140	6%	2	0%	1,754	69%	54	2%	119	5%	89	4%	2,524
Wesleyan College	1	0%	14	3%	176	35%	60	12%	2	0%	165	33%	28	6%	3	1%	47	9%	496
Young Harris College	7	0%	19	1%	79	5%	77	5%	3	0%	944	65%	61	4%	192	13%	69	5%	1,451
<b>Total</b>	<b>186</b>	<b>0%</b>	<b>3,133</b>	<b>7%</b>	<b>14,449</b>	<b>30%</b>	<b>4,265</b>	<b>9%</b>	<b>60</b>	<b>0%</b>	<b>18,717</b>	<b>39%</b>	<b>1,627</b>	<b>3%</b>	<b>3,064</b>	<b>6%</b>	<b>2,459</b>	<b>5%</b>	<b>47,960</b>

Source: Integrated Postsecondary Education Data System, Fall Enrollment Survey

Fall 2024 data is considered preliminary.

Fall 2023 Age of Undergraduate Students by Enrollment Status										
	Part-time Students					Full-time Students				
	Under 25		Over 25		Total	Under 25		Over 25		Total
	#	%	#	%	#	#	%	#	%	#
Agnes Scott College	4	57%	3	43%	7	900	100%	4	0%	904
Andrew College	16	22%	54	74%	73	192	87%	25	11%	221
Berry College	28	97%	1	3%	29	2,187	100%	10	0%	2,197
Brenau University	229	56%	182	44%	411	617	79%	167	21%	784
Brewton-Parker Christian University	341	67%	170	33%	511	477	89%	61	11%	538
Clark Atlanta University	91	89%	11	11%	102	3,339	98%	54	2%	3,393
Covenant College	58	95%	3	5%	61	839	99%	8	1%	847
Emmanuel University	144	91%	15	9%	159	690	98%	12	2%	702
Emory University	87	91%	9	9%	96	7,160	99%	103	1%	7,263
Emory University-Oxford College						973	100%		0%	973
LaGrange College	16	80%	4	20%	20	544	97%	18	3%	562
Life University	66	53%	59	47%	125	668	89%	78	10%	748
Mercer University	180	29%	450	71%	630	3,515	84%	662	16%	4,177
Morehouse College	124	34%	240	66%	364	2,263	95%	111	5%	2,374
Oglethorpe University	75	83%	15	17%	90	1,364	97%	45	3%	1,409
Piedmont University	29	32%	61	68%	90	1,043	89%	128	11%	1,171
Point University	1,286	80%	276	17%	1,605	762	75%	165	16%	1,012
Reinhardt University	65	68%	31	32%	96	916	93%	70	7%	986
Shorter University	223	77%	68	23%	291	938	91%	83	8%	1,031
Spelman College	192	17%	904	82%	1,101	2,514	99%	18	1%	2,532
Thomas University	91	33%	186	67%	277	430	71%	175	29%	605
Toccoa Falls College	1,516	97%	39	3%	1,555	853	91%	81	9%	934
Truett McConnell University	1,807	99%	15	1%	1,822	742	94%	48	6%	790
Wesleyan College	143	74%	50	26%	193	366	91%	36	9%	402
Young Harris College	583	100%	2	0%	585	815	100%	3	0%	818
<b>Total</b>	<b>7,394</b>	<b>72%</b>	<b>2,848</b>	<b>28%</b>	<b>10,293</b>	<b>35,107</b>	<b>94%</b>	<b>2,165</b>	<b>6%</b>	<b>37,373</b>

Source: Integrated Postsecondary Education Data System, Fall Enrollment Survey

Fall 2023 data, since Fall 2024 data not available for all institutions.

Totals in total column may not match the sum of other columns since there are a small number of unknown ages not displayed.

## 2023-2024 Completions by Degree Level

	Associate's Degree	Bachelor's Degree	Master's Degree	Doctoral/ Professional Degree	Total
Agnes Scott College		209	84	0	293
Andrew College	54	9		0	63
Berry College		475	44	0	519
Brenau University	22	190	338	91	641
Brewton-Parker Christian University	80	85	31	0	196
Clark Atlanta University		439	137	28	604
Covenant College		169	16	0	185
Emmanuel University	5	143	17	0	165
Emory University		2,034	1,859	830	4,723
Emory University-Oxford College	420			0	420
LaGrange College	3	104	38	0	145
Life University	0	198	72	304	574
Mercer University		1,173	975	407	2,555
Morehouse College		410		0	410
Oglethorpe University		278	0	0	278
Piedmont University		291	132	9	432
Point University	104	59	32	0	195
Reinhardt University	6	219	54	0	279
Shorter University	7	264	102	0	373
Spelman College		481		0	481
Thomas University	31	159	250	0	440
Toccoa Falls College	36	126	7	0	169
Truett McConnell University		142	32	0	174
Wesleyan College		121	17	0	138
Young Harris College		160	16	0	176
<b>Total</b>	<b>768</b>	<b>7,938</b>	<b>4,253</b>	<b>1,669</b>	<b>14,628</b>

Source: Integrated Postsecondary Education Data System, Completions Survey

# Completions

<b>Student Charges 2024-2025</b>					
	<b>In-state average tuition for full-time undergraduates</b>	<b>In-state required fees for full-time undergraduates</b>	<b>Typical housing charge for academic year</b>	<b>Typical food charge for academic year</b>	<b>Combined charge for housing and food</b>
Agnes Scott College	\$50,264	\$340	\$6,800	\$7,105	
Andrew College	\$19,604	\$0	\$6,176	\$6,256	
Berry College	\$41,160	\$326	\$8,120	\$6,470	
Brenau University	\$31,470	\$2,287			\$12,850
Brewton-Parker Christian University	\$18,400	\$1,720	\$3,600	\$5,430	
Clark Atlanta University	\$25,128	\$3,182	\$7,558	\$5,190	
Covenant College	\$40,800	\$1,240			\$12,754
Emmanuel University	\$25,500	\$0			\$10,984
Emory University	\$63,400	\$880	\$11,810	\$8,410	
Emory University-Oxford College	\$63,400	\$880	\$11,810	\$8,410	
LaGrange College	\$34,460	\$940	\$7,094	\$6,072	
Life University	\$13,545	\$1,491	\$7,200	\$5,160	
Mercer University	\$31,265	\$300	\$7,412	\$7,744	
Morehouse College	\$28,964	\$3,929	\$10,920	\$3,858	
Oglethorpe University	\$47,180	\$410	\$9,980	\$5,800	
Piedmont University	\$31,200	\$500	\$6,800	\$6,100	
Point University	\$22,800	\$1,150	\$4,500	\$4,600	
Reinhardt University	\$28,164	\$1,910			\$13,600
Shorter University	\$24,100	\$530	\$5,172	\$4,748	
Spelman College	\$28,207	\$3,349			\$18,091
Thomas University	\$11,400	\$240			\$8,141
Toccoa Falls College	\$23,950	\$0			\$8,800
Truett McConnell University	\$24,912	\$1,880	\$4,680	\$5,256	
Wesleyan College	\$26,450	\$1,200			\$11,660
Young Harris College	\$30,800	\$1,505	\$5,500	\$5,500	

Source: Integrated Postsecondary Education Data System, Cost Survey

# Cost

## Average Net Price Trend & by Family Income

	Average Net Price Trend				Average Net Price by Family Income 2023-2024				
	2021-2022	2022-2023	2023-2024	% Change	\$0-30,000	\$30,001-48,000	\$48,001-75,000	\$75,001-110,000	Over \$110,001
Agnes Scott College	\$24,305	\$25,609	\$27,499	13%	\$21,467	\$21,956	\$23,697	\$25,194	\$30,054
Andrew College	\$21,908	\$22,806	\$21,709	-1%	\$19,107	\$20,082	\$22,324	\$24,861	\$26,427
Berry College	\$25,359	\$25,383	\$25,363	0%	\$18,189	\$16,935	\$19,283	\$20,665	\$28,116
Brenau University	\$23,635	\$20,860	\$19,743	-16%	\$19,481	\$17,379	\$18,420	\$18,279	\$20,426
Brewton-Parker Christian University	\$21,874	\$22,488	\$25,613	17%	\$24,574	\$24,633	\$27,082	\$28,590	\$29,357
Clark Atlanta University	\$30,015	\$29,736	\$31,223	4%	\$37,356	\$39,270	\$39,009	\$39,514	\$38,680
Covenant College	\$25,028	\$25,471	\$27,926	12%	\$18,310	\$15,929	\$24,606	\$24,836	\$30,172
Emmanuel University	\$19,921	\$19,006	\$20,780	4%	\$18,104	\$18,056	\$20,186	\$20,961	\$25,043
Emory University	\$26,680	\$27,986	\$27,303	2%	\$7,363	\$9,220	\$11,237	\$13,821	\$53,018
Emory University-Oxford College	\$32,842	\$34,262	\$32,229	-2%	\$24,758	\$16,938	\$17,889	\$25,372	\$59,541
LaGrange College	\$21,557	\$24,564	\$21,139	-2%	\$20,764	\$19,322	\$18,718	\$18,707	\$24,549
Life University	\$28,226	\$30,403	\$29,111	3%	\$28,151	\$28,136	\$30,263	\$33,995	\$30,883
Mercer University	\$22,087	\$24,197	\$25,067	13%	\$20,503	\$22,170	\$23,219	\$25,870	\$27,456
Morehouse College	\$35,251	\$34,733	\$37,301	6%	\$36,359	\$36,534	\$40,092	\$41,179	\$42,723
Oglethorpe University	\$20,094	\$22,251	\$20,490	2%	\$16,207	\$17,558	\$18,745	\$23,924	\$22,055
Piedmont University	\$18,792	\$21,599	\$22,252	18%	\$15,416	\$17,618	\$19,085	\$24,161	\$25,622
Point University	\$19,890	\$22,622	\$19,545	-2%	\$23,992	\$24,000	\$25,993	\$27,437	\$26,601
Reinhardt University	\$26,845	\$27,507	\$24,550	-9%	\$21,877	\$21,977	\$23,758	\$28,296	\$26,816
Shorter University	\$13,490	\$16,692	\$16,821	25%	\$15,929	\$21,482	\$22,944	\$21,292	\$18,898
Spelman College	\$37,085	\$37,403	\$40,354	9%	\$32,923	\$34,108	\$36,602	\$38,640	\$44,529
Thomas University	\$16,308	\$19,087	\$18,724	15%	\$15,640	\$19,546	\$19,923	\$19,934	\$20,059
Toccoa Falls College	\$20,609	\$20,657	\$21,955	7%	\$20,825	\$18,982	\$20,262	\$22,762	\$24,766
Truett McConnell University	\$18,835	\$22,373	\$22,179	18%	\$21,274	\$18,953	\$20,984	\$22,134	\$24,560
Wesleyan College	\$13,900	\$15,621	\$12,837	-8%	\$11,045	\$13,317	\$12,943	\$9,287	\$22,726
Young Harris College	\$18,910	\$20,509	\$21,969	16%	\$19,721	\$17,986	\$20,095	\$22,992	\$25,053

Source: Integrated Postsecondary Education Data System, Cost Survey

### Total Financial Aid Package to First-time, Full-time Students 2023-2024

	Total Institutional Grant Aid		Total Pell Grant Aid		Total Other Federal Grant Aid		Total State/Local Grant Aid		Total Federal Student Loans		Total Other Student Loans		Total Financial Aid Package
	\$	% of Total Package	\$	% of Total Package	\$	% of Total Package	\$	% of Total Package	\$	% of Total Package	\$	% of Total Package	\$
Agnes Scott College	\$7,316,905	75%	\$533,091	5%	\$22,847	0%	\$814,630	8%	\$720,958	7%	\$401,289	4%	\$9,809,720
Andrew College	\$1,025,274	45%	\$354,760	16%	\$14,400	1%	\$275,410	12%	\$402,502	18%	\$203,615	9%	\$2,275,961
Berry College	\$14,795,584	73%	\$864,277	4%	\$105,750	1%	\$2,444,498	12%	\$1,265,758	6%	\$832,623	4%	\$20,308,490
Brenau University	\$3,577,213	55%	\$726,493	11%	\$75,500	1%	\$780,459	12%	\$1,041,184	16%	\$301,943	5%	\$6,502,792
Brewton-Parker Christian University	\$1,372,306	40%	\$757,671	22%	\$40,050	1%	\$392,494	11%	\$673,814	19%	\$221,701	6%	\$3,458,036
Clark Atlanta University	\$5,802,569	31%	\$4,906,348	26%	\$184,012	1%	\$949,802	5%	\$5,217,108	27%	\$1,935,960	10%	\$18,995,799
Covenant College	\$6,456,146	79%	\$240,099	3%	\$99,927	1%	\$485,265	6%	\$533,121	7%	\$316,793	4%	\$8,131,351
Emmanuel University	\$2,464,588	59%	\$395,824	10%	\$5,598	0%	\$585,923	14%	\$578,933	14%	\$122,866	3%	\$4,153,732
Emory University	\$34,710,698	89%	\$1,483,380	4%	\$236,000	1%	\$1,078,343	3%	\$677,998	2%	\$923,346	2%	\$39,109,765
Emory University-Oxford College	\$11,712,189	83%	\$454,793	3%	\$41,354	0%	\$537,077	4%	\$374,568	3%	\$997,224	7%	\$14,117,205
LaGrange College	\$3,962,187	67%	\$501,056	8%	\$39,406	1%	\$602,116	10%	\$758,272	13%	\$55,597	1%	\$5,918,634
Life University	\$1,189,556	43%	\$533,522	19%	\$63,000	2%	\$223,917	8%	\$651,843	24%	\$83,084	3%	\$2,744,922
Mercer University	\$26,365,709	65%	\$2,175,627	5%	\$409,967	1%	\$5,295,727	13%	\$3,487,350	9%	\$2,556,304	6%	\$40,290,684
Morehouse College	\$5,487,070	44%	\$1,967,038	16%	\$179,449	1%	\$745,190	6%	\$2,281,006	18%	\$1,686,328	14%	\$12,346,081
Oglethorpe University	\$12,603,658	72%	\$1,046,684	6%	\$72,250	0%	\$1,508,316	9%	\$1,699,984	10%	\$527,778	3%	\$17,458,670
Piedmont University	\$4,994,263	58%	\$819,874	10%	\$20,000	0%	\$1,181,900	14%	\$1,033,910	12%	\$493,183	6%	\$8,543,130
Point University	\$3,348,189	77%	\$429,321	10%	\$15,870	0%	\$102,880	2%	\$378,090	9%	\$47,217	1%	\$4,321,567
Reinhardt University	\$4,764,469	56%	\$888,901	10%	\$38,832	0%	\$1,194,336	14%	\$1,102,798	13%	\$502,097	6%	\$8,491,433
Shorter University	\$3,344,720	55%	\$690,650	11%	\$35,000	1%	\$965,906	16%	\$931,641	15%	\$103,781	2%	\$6,071,698
Spelman College	\$4,696,971	40%	\$1,732,573	15%	\$48,000	0%	\$909,490	8%	\$2,877,552	25%	\$1,438,038	12%	\$11,702,624
Thomas University	\$195,836	20%	\$220,982	22%	\$6,000	1%	\$276,264	28%	\$283,878	29%	\$8,340	1%	\$991,300
Toccoa Falls College	\$1,825,983	46%	\$623,376	16%	\$26,050	1%	\$655,376	16%	\$670,452	17%	\$195,182	5%	\$3,996,419
Truett McConnell University	\$2,393,742	54%	\$406,023	9%	\$16,750	0%	\$779,414	17%	\$642,250	14%	\$235,502	5%	\$4,473,681
Wesleyan College	\$1,981,167	65%	\$401,333	13%	\$8,500	0%	\$393,641	13%	\$229,435	8%	\$20,696	1%	\$3,034,772
Young Harris College	\$4,849,921	62%	\$555,260	7%	\$44,750	1%	\$910,219	12%	\$971,259	12%	\$479,754	6%	\$7,811,163
<b>Total</b>	<b>\$171,236,913</b>	<b>65%</b>	<b>\$23,708,956</b>	<b>9%</b>	<b>\$1,849,262</b>	<b>1%</b>	<b>\$24,088,593</b>	<b>9%</b>	<b>\$29,485,664</b>	<b>11%</b>	<b>\$14,690,241</b>	<b>6%</b>	<b>\$265,059,629</b>

Source: Integrated Postsecondary Education Data System, Student Financial Aid Survey

# Financial Aid

### Funding to Students Attending GICA Institutions from Georgia Student Finance Corporation (2024-25)

	Dual Enrollment		Tuition Equalization Grant		HOPE Scholarship		Zell Miller Scholarship		Completion Grant		Total Financial Aid Package (does not include Dual Enrollment funds)	Total State Dollars (includes Dual Enrollment Funds)
	# Students	\$ Total	# Students	\$ Total	# Students	\$ Total	# Students	\$ Total	# Students	\$ Total	\$	\$
Agnes Scott College	19	\$41,000	498	\$521,470	297	\$1,405,664	101	\$560,456	45	\$60,292	\$2,547,882	\$2,588,882
Andrew College	---	\$7,250	252	\$235,400	85	\$365,664	---	\$7,463	---	\$8,737	\$617,264	\$624,514
Berry College	---	---	1,616	\$1,725,117	954	\$4,642,840	451	\$2,676,038	48	\$90,287	\$9,134,282	\$9,134,282
Brenau University	318	\$397,250	786	\$756,273	459	\$2,038,690	31	\$173,131	33	\$62,165	\$3,030,259	\$3,427,509
Brewton-Parker Christian University	448	\$845,250	390	\$379,650	168	\$744,640	16	\$92,536	15	\$21,920	\$1,238,746	\$2,083,996
Clark Atlanta University	13	\$39,000	643	\$666,050	369	\$1,719,536	---	\$29,850	23	\$35,000	\$2,450,436	\$2,489,436
Covenant College			293	\$310,200	145	\$678,496	106	\$618,644	14	\$23,686	\$1,631,026	\$1,631,026
Emmanuel University	156	\$204,500	473	\$472,655	305	\$1,401,470	28	\$165,669	25	\$32,461	\$2,072,255	\$2,276,755
Emory University			1,078	\$1,150,388	296	\$1,353,872	717	\$4,210,965	28	\$63,988	\$6,779,213	\$6,779,213
LaGrange College	13	\$23,250	477	\$482,018	265	\$1,229,280	30	\$179,099	13	\$25,000	\$1,915,397	\$1,938,647
Life University			291	\$294,677	130	\$623,871	---	\$36,612	10	\$10,619	\$965,779	\$965,779
Mercer University	---	\$11,250	3,651	\$3,614,603	1,564	\$7,233,340	816	\$4,703,219	264	\$457,859	\$16,009,020	\$16,020,270
Morehouse College			581	\$582,675	273	\$1,299,168	19	\$113,430	21	\$35,983	\$2,031,256	\$2,031,256
Oglethorpe University	53	\$96,250	862	\$904,400	513	\$2,369,744	124	\$695,258	39	\$57,611	\$4,027,013	\$4,123,263
Piedmont University	41	\$38,600	911	\$917,988	552	\$2,520,168	84	\$518,907	27	\$56,828	\$4,013,891	\$4,052,491
Point University	920	\$1,839,000	319	\$309,800	187	\$786,240	14	\$65,672	22	\$18,664	\$1,180,376	\$3,019,376
Reinhardt University	72	\$266,500	895	\$867,788	533	\$2,361,632	39	\$202,737	18	\$36,939	\$3,469,096	\$3,735,596
Shorter University	184	\$351,250	813	\$820,694	491	\$2,256,592	55	\$309,454	20	\$39,125	\$3,425,865	\$3,777,115
Spelman College			510	\$534,292	359	\$1,666,955	81	\$456,169	27	\$56,507	\$2,713,923	\$2,713,923
Thomas University	36	\$46,750	348	\$304,150	91	\$386,870	---	\$26,865	20	\$20,658	\$738,543	\$785,293
Toccoa Falls College	2,591	\$6,509,250	599	\$582,738	341	\$1,553,885	63	\$359,949	18	\$26,946	\$2,523,518	\$9,032,768
Truett McConnell University	1,923	\$4,417,250	567	\$573,399	360	\$1,688,402	67	\$399,500	24	\$32,433	\$2,693,734	\$7,110,984
Wesleyan College	85	\$162,250	301	\$309,450	185	\$869,785	12	\$70,648	24	\$39,844	\$1,289,727	\$1,451,977
Young Harris College	872	\$1,742,250	573	\$594,550	369	\$1,780,272	61	\$349,245	15	\$33,134	\$2,757,201	\$4,499,451
<b>Total</b>	<b>6,398</b>	<b>\$17,038,100</b>	<b>17,557</b>	<b>\$17,910,425</b>	<b>9,291</b>	<b>\$42,977,076</b>	<b>3,084</b>	<b>\$17,021,516</b>	<b>793</b>	<b>\$1,346,686</b>	<b>\$79,255,702</b>	<b>\$96,293,802</b>

--- Data not available or data tabulation not appropriate. GSFC redacts values less than 10. Totals reflect the redacted data.

Data Source: Georgia Student Finance Commission

Report Date: August 13, 2025

## Percent of First-time, Full-time Receiving Institutional Grant Aid and Average Award

	Percent Awarded Institutional Grant Aid				Average Institutional Grant Award			
	2021-2022	2022-2023	2023-2024	% Change	2021-2022	2022-2023	2023-2024	% Change
Agnes Scott College	100	100	100	0%	\$29,243	\$29,797	\$30,361	4%
Andrew College	99	93	97	-2%	\$8,858	\$8,553	\$9,858	11%
Berry College	100	100	100	0%	\$24,495	\$24,635	\$25,687	5%
Brenau University	87	86	97	11%	\$17,783	\$19,626	\$18,631	5%
Brewton-Parker Christian University	100	100	97	-3%	\$7,631	\$7,682	\$7,223	-5%
Clark Atlanta University	38	45	48	26%	\$8,258	\$8,416	\$11,400	38%
Covenant College	98	97	98	0%	\$24,036	\$25,235	\$26,901	12%
Emmanuel University	88	93	63	-28%	\$10,033	\$11,792	\$19,255	92%
Emory University	49	44	45	-8%	\$46,482	\$48,648	\$53,982	16%
Emory University-Oxford College	52	52	46	-12%	\$41,094	\$43,685	\$49,005	19%
LaGrange College	100	100	99	-1%	\$20,122	\$18,198	\$21,770	8%
Life University	78	69	72	-8%	\$9,735	\$9,030	\$8,319	-15%
Mercer University	100	98	100	0%	\$25,678	\$25,578	\$26,131	2%
Morehouse College	54	60	63	17%	\$12,727	\$10,996	\$12,790	0%
Oglethorpe University	99	100	99	0%	\$30,130	\$30,375	\$32,484	8%
Piedmont University	100	100	99	-1%	\$16,581	\$17,866	\$17,648	6%
Point University	100	93	97	-3%	\$9,923	\$9,776	\$13,339	34%
Reinhardt University	97	100	99	2%	\$11,737	\$12,657	\$15,222	30%
Shorter University	97	95	79	-19%	\$13,243	\$12,495	\$15,852	20%
Spelman College	96	95	95	-1%	\$7,017	\$8,807	\$6,788	-3%
Thomas University	56	91	58		\$5,549	\$3,083	\$2,543	
Toccoa Falls College	82	92	86	5%	\$8,721	\$9,487	\$10,258	18%
Truett McConnell University	100	100	100	0%	\$10,409	\$10,171	\$11,186	7%
Wesleyan College	100	100	100	0%	\$17,368	\$17,172	\$19,812	14%
Young Harris College	100	100	100	0%	\$20,605	\$19,993	\$20,208	-2%

Source: Integrated Postsecondary Education Data System, Student Financial Aid Survey

## Percent First-time, Full-time Receiving Pell Grants and Average Award

	Percent Awarded Pell Grants				Average Pell Grant Award			
	2021-2022	2022-2023	2023-2024	% Change	2021-2022	2022-2023	2023-2024	% Change
Agnes Scott College	41	39	38	-7%	\$5,265	\$5,410	\$5,858	11%
Andrew College	67	59	57	-15%	\$4,569	\$5,083	\$5,816	27%
Berry College	27	26	26	-4%	\$4,896	\$5,261	\$5,686	16%
Brenau University	54	53	58	7%	\$5,598	\$5,858	\$6,317	13%
Brewton-Parker Christian University	68	62	65	-4%	\$5,010	\$5,219	\$5,919	18%
Clark Atlanta University	74	76	73	-1%	\$5,326	\$5,756	\$6,339	19%
Covenant College	21	23	19	-10%	\$4,626	\$4,251	\$5,108	10%
Emmanuel University	33	40	33	0%	\$4,752	\$4,936	\$5,821	22%
Emory University	18	16	18	0%	\$5,772	\$5,954	\$5,840	1%
Emory University-Oxford College	15	15	15	0%	\$5,475	\$5,340	\$5,831	7%
LaGrange College	36	51	51	42%	\$4,653	\$4,811	\$5,330	15%
Life University	44	47	48	9%	\$5,213	\$5,857	\$5,558	7%
Mercer University	30	30	36	20%	\$5,232	\$5,800	\$6,043	16%
Morehouse College	47	47	48	2%	\$5,335	\$5,522	\$6,034	13%
Oglethorpe University	38	36	42	11%	\$5,542	\$5,685	\$6,461	17%
Piedmont University	37	36	45	22%	\$5,624	\$5,477	\$6,356	13%
Point University	54	41	42	-22%	\$5,176	\$5,019	\$3,903	-25%
Reinhardt University	35	47	48	37%	\$4,684	\$5,003	\$5,926	27%
Shorter University	48	51	43	-10%	\$5,019	\$5,579	\$6,058	21%
Spelman College	44	36	39	-11%	\$5,315	\$5,347	\$6,101	15%
Thomas University	49	52	92	88%	\$2,408	\$3,024	\$1,797	-25%
Toccoa Falls College	48	43	50	4%	\$5,259	\$5,509	\$6,052	15%
Truett McConnell University	33	35	33	0%	\$5,308	\$4,571	\$5,719	8%
Wesleyan College	65	68	63	-3%	\$5,798	\$5,664	\$6,370	10%
Young Harris College	38	34	38	0%	\$4,807	\$5,162	\$6,102	27%

Source: Integrated Postsecondary Education Data System, Student Financial Aid Survey