



House Higher Education Ad Hoc Committee Meeting Presentation

The Tuition Equalization Grant Program

Lynne Riley

President

August 30, 2023

Tuition Equalization Grant Program

- Tuition Equalization Grant (TEG) program was created in 1971
- O.C.G.A. § 20-3-410 – 20-3-416
- Administered by the Georgia Student Finance Authority
- Award amounts established annually by the General Assembly
- Funded with state general fund appropriations

Tuition Equalization Grant Program

Institution Eligibility – Nonproprietary Institutions

- Is not a branch of the University System of Georgia
- Is not owned and operated by a different state
- Is Accredited by Southern Association of Colleges and Schools
- Is not a graduate level school or college of theology or divinity
- Is not presently receiving state funds under O.C.G.A. § 20-3-4 (“Junior Colleges;)

Tuition Equalization Grant Program

Institution Eligibility – Propriety Institutions

- Is a baccalaureate degree-granting institution of higher education
- Is accredited by Southern Association of Colleges and Schools
- Is not a Bible school or college
- Admits only students with HS diploma, GED or degree from an accredited postsecondary institution
- Enrolls students who are eligible for federal Pell Grants

Tuition Equalization Grant Program

Institution Eligibility – Propriety Institutions

- Has existed in the state for at least 10 years
- Has been approved for operation and receipt of TEG funds by the Georgia Nonpublic Postsecondary Education Commission
- Is domiciled and incorporated in the State of Georgia
- Met all requirements by January 1, 2011

Tuition Equalization Grant Program

Student Eligibility

Full-time enrollment at an approved institution

Meet residency requirements

Maintain satisfactory academic progress as certified by the institution

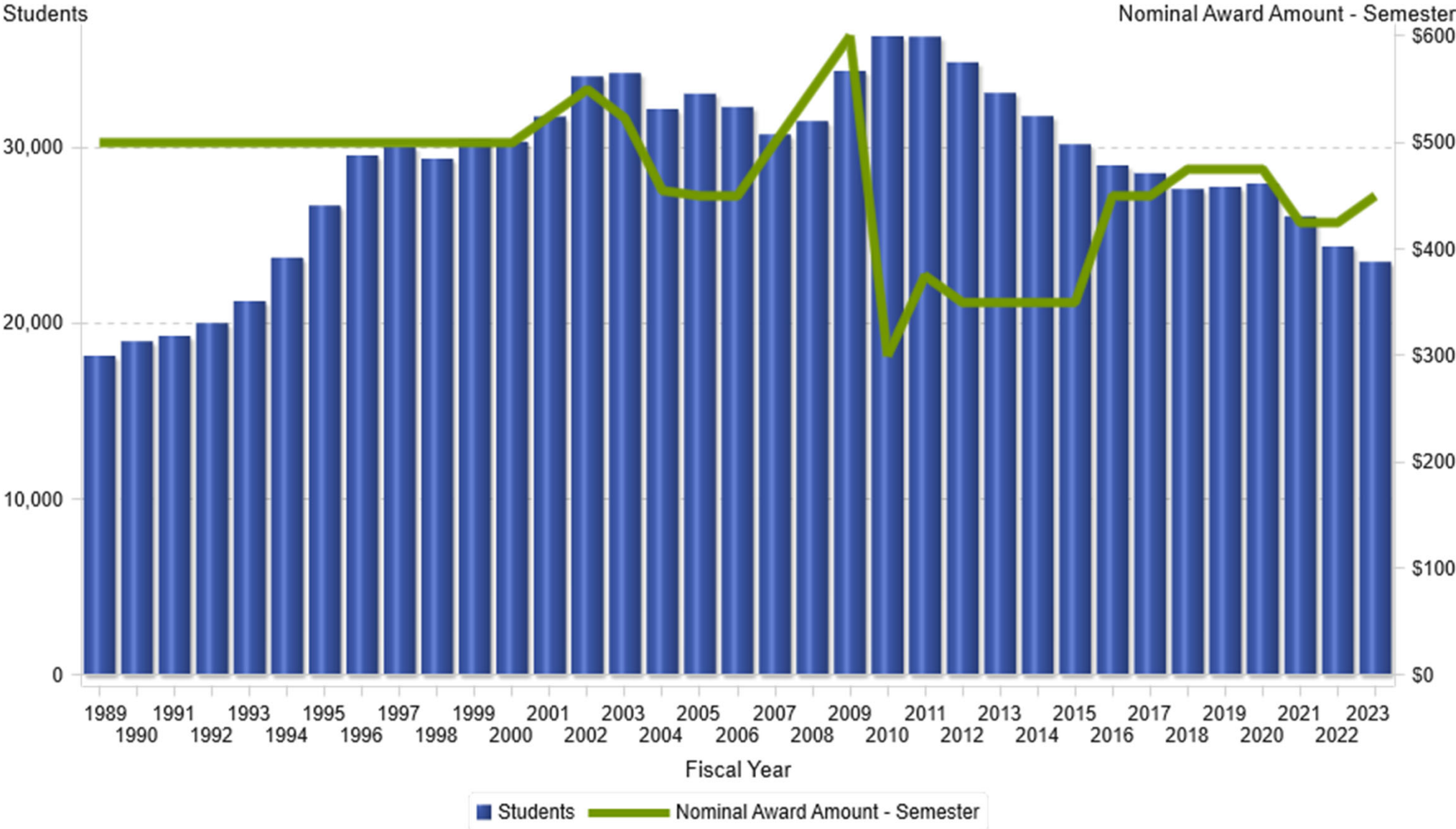
No academic merit or financial need requirements

Tuition Equalization Grant Program

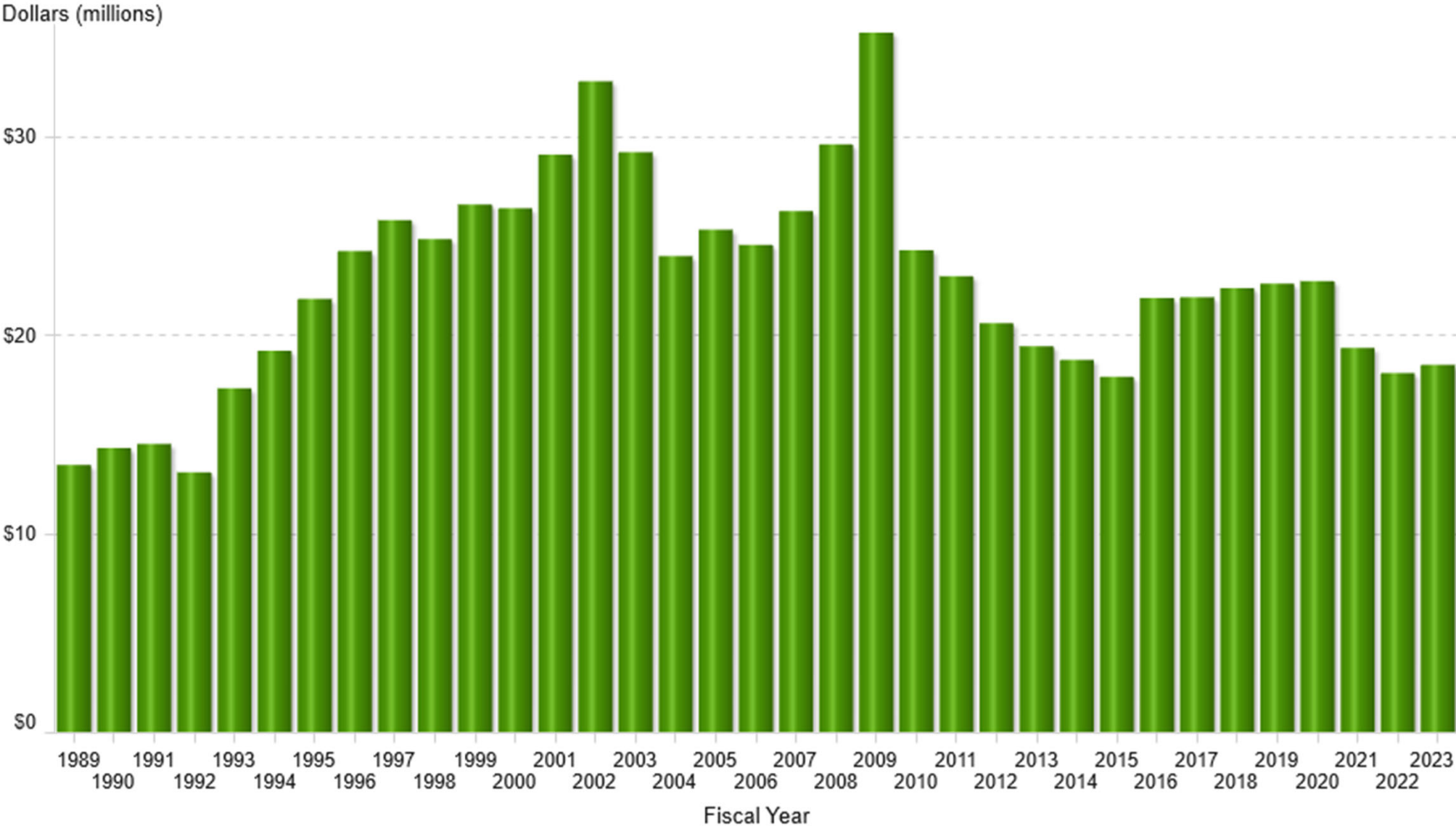
New Award Amounts in FY 2024

- Annual award rates increase from \$900 to \$1,000
 - Per semester increase from \$450 to \$500
 - Per quarter increase from \$300 to \$333

TEG Students and Nominal Award Amounts



TEG Dollars Awarded



TEG Dollars Awarded: FY2023

Mercer University	\$3,031,199
Georgia Military College	\$1,911,855
Berry College	\$1,383,827
Savannah College of Art & Design	\$1,143,793
Emory University	\$870,582
Piedmont University	\$814,442
Oglethorpe University	\$749,650
Shorter University	\$731,918
Reinhardt University	\$660,337
Brenau University	\$623,019
Young Harris College	\$536,850

Truett McConnell University	\$507,012
Clark Atlanta University	\$478,800
Agnes Scott College	\$465,225
Toccoa Falls College	\$432,169
Spelman College	\$417,278
LaGrange College	\$393,575
Morehouse College	\$389,475
Emmanuel College	\$348,611
American Intercontinental University	\$321,827
Brewton-Parker College	\$321,250
Point University	\$294,750

Wesleyan College	\$292,375
DeVry University	\$216,825
Covenant College	\$212,595
Art Institute of Atlanta	\$210,793
Thomas University	\$195,750
Life University	\$172,545
South University	\$159,920
Paine College	\$118,350
Andrew College	\$97,650
Saint Leo University	\$9,175
Embry-Riddle Aeronautical University	\$3,790

Contact Information



770.724.9001



lynne.riley@gsfc.org