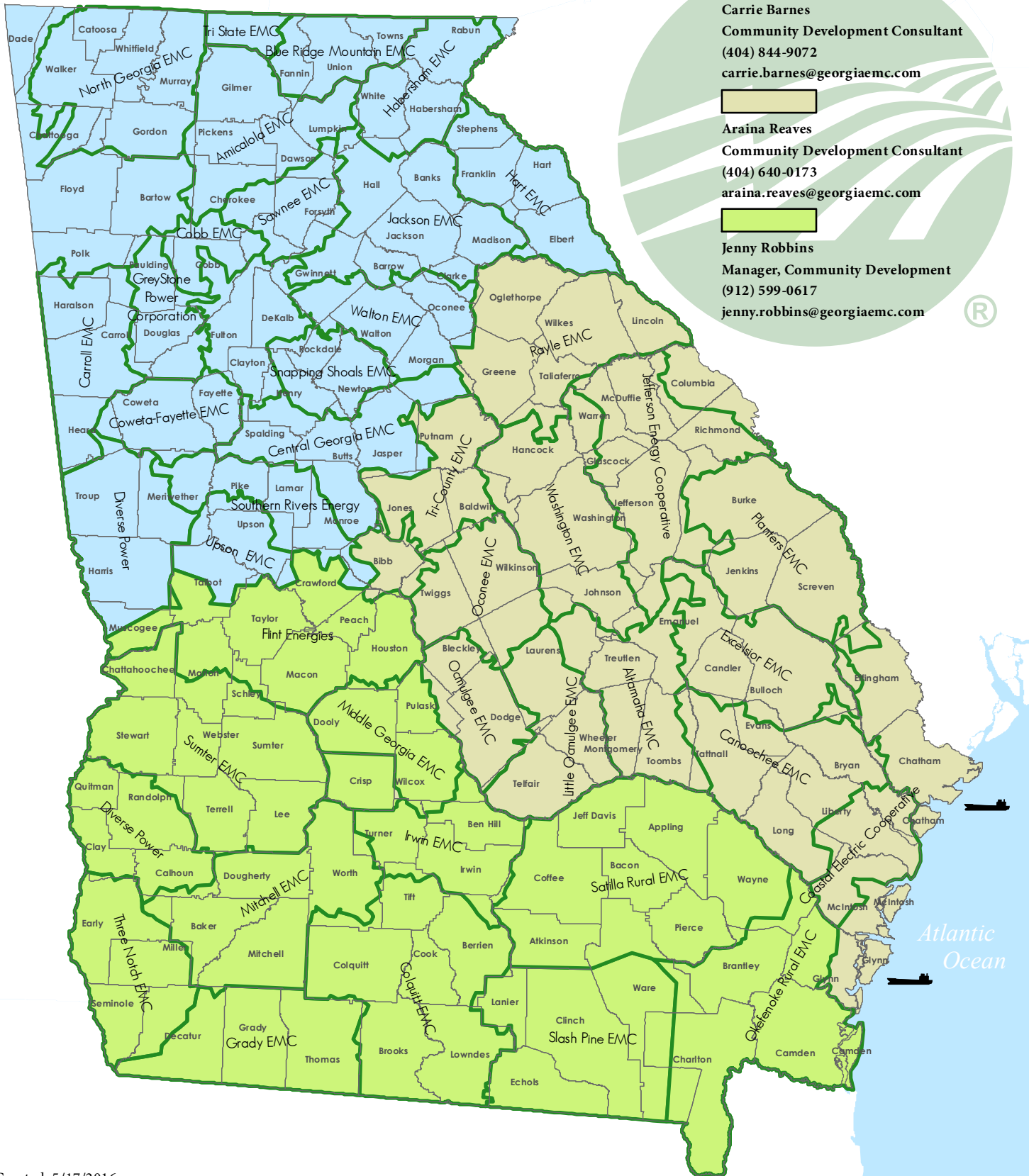


Community Development Service Areas



Georgia EMC
Representing Georgia's Electric Cooperatives



Carrie Barnes
Community Development Consultant
(404) 844-9072
carrie.barnes@georgiaemc.com

Araina Reaves
Community Development Consultant
(404) 640-0173
araina.reaves@georgiaemc.com

Jenny Robbins
Manager, Community Development
(912) 599-0617
jenny.robbs@georgiaemc.com

Date Created: 5/17/2016

Note: This information is for discussion purposes only.

All information provided by GEMC GIS, Communities, and published sources.