

Annual Economic Impact of Georgia's Electric Cooperatives



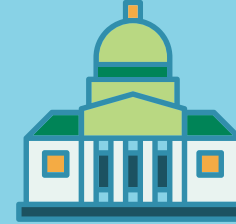
14,900
JOBS
supported



\$1.6
BILLION
wages paid



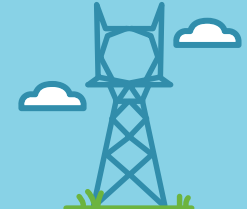
\$8.3
BILLION
overall economic
impact



\$139
MILLION
state taxes paid



\$553
MILLION
local taxes paid



\$16
BILLION
invested in
Infrastructure

THE ELECTRIC COOPERATIVE DIFFERENCE

MEMBER-OWNED

- ✓ 5 million Georgians are served by an electric cooperative at their home and/or business, representing nearly half the state's population across 73% of its land area.
- ✓ Co-ops are built by and belong to the communities they serve. They are uniquely suited to meet local needs.
- ✓ Members have democratic control over policy-setting and decision-making (one member, one vote).

NOT-FOR-PROFIT

- ✓ Electric co-ops operate at cost.
- ✓ Any excess revenue is reinvested in the co-op or returned to members.

CONCERN FOR COMMUNITY

- ✓ Co-ops invest and actively participate in bettering their communities through consumer advocacy, economic development, youth and education programs, volunteerism and so much more.
- ✓ Georgia co-ops invest an average of \$4.1 million in cost-saving energy efficiency programs for their members each year.

STRENGTH IN COOPERATION

- ✓ Collective advocacy at the grassroots, state and federal levels aims to ensure electric co-ops' ability to provide safe, reliable, affordable electricity and related services to their members.

Source: Georgia Electric Membership Corporation (Georgia EMC) contracted with the Georgia Tech Enterprise Innovation Institute's Center for Economic Development Research (CEDR) to complete an economic presence analysis using data regarding operating revenue, employees, and payroll tabulated from forms filed with the U.S. Department of Agriculture Rural Utilities Service (RUS) and the National Rural Utilities Cooperative Finance Corporation (CFC). The electric cooperative industry in Georgia is composed of the state's 41 electric cooperatives and their statewide partners: Georgia EMC, Oglethorpe Power Corp., Georgia Transmission Corp. and Georgia System Operations Corp. CEDR built the IMPLAN model to reflect the impact of direct expenditures and indirect effects as activity from Georgia's electric cooperatives circulates through the state, supporting job creation, diversified economies, and the expansion and recruitment of industries on the local and regional level. To learn more about Georgia's electric cooperatives, visit GeorgiaEMC.com and ChooseGeorgia.com.