



CaSS | **Clinical and Statewide Services**
safe | sustainable | appropriate

Patient Home Monitoring with Telehealth Technologies in Queensland Health

Presented by Daniel Best

Statewide Telehealth Services

- Clinical & non-clinical videoconferencing
- Procure, maintain & support 600+ VC units around the state
- Predominately mobile trolley and room-based systems
- VC infrastructure in Brisbane
- Multi-point bridging





Project Background - A Videoconference Solution in the Patient's Home

- Focus on rural and remote areas of QLD
- A need to reduce patient travel
- Greater access to specialist services



Project Requirements

- Highly user-friendly solution
- Compatible/Supportable
- Secure
- Mobility/portability

Solutions

- Tandberg E20
 - (Desktop Videoconferencing)
- Tandberg MOVI
 - (PC Videoconferencing)



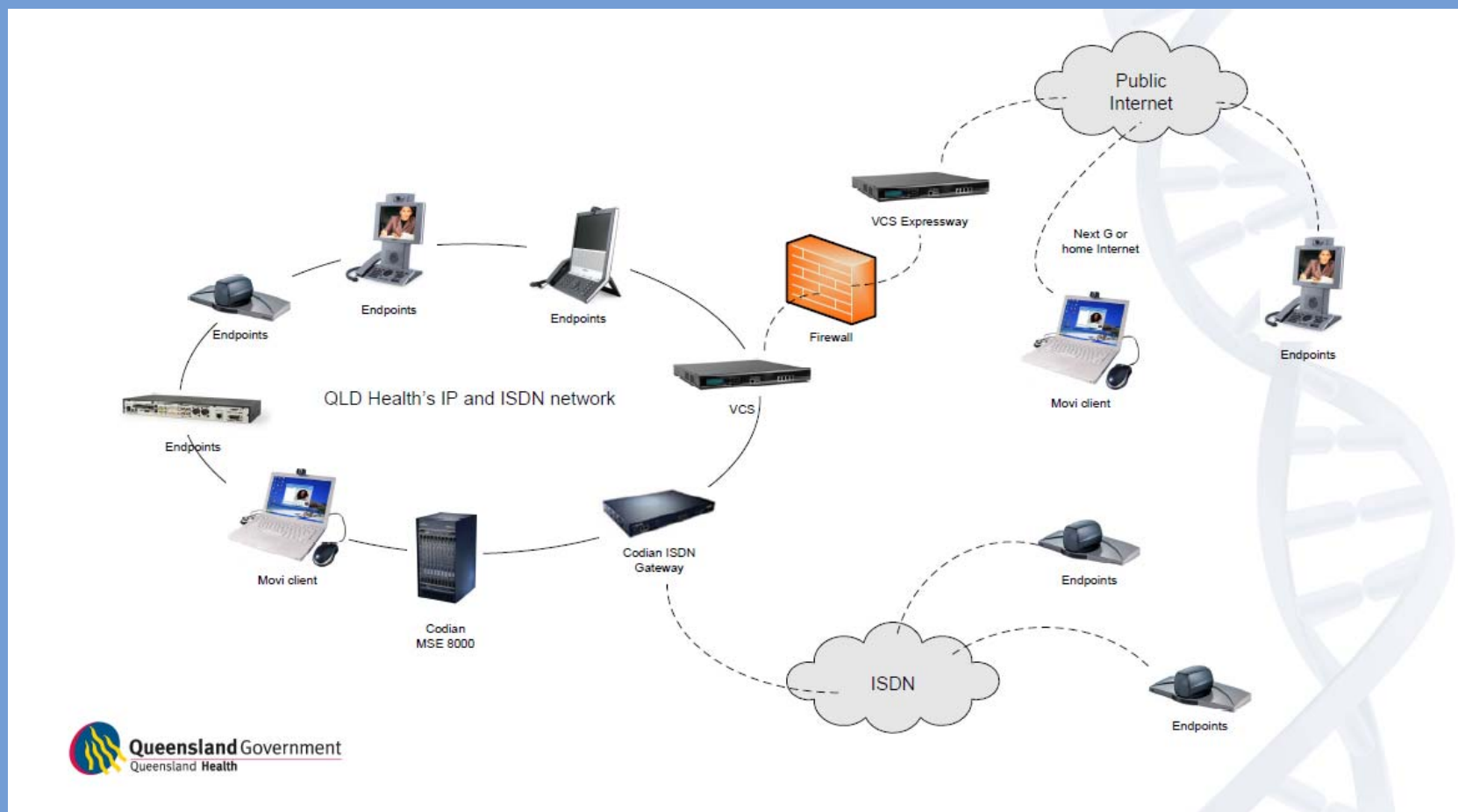
Tandberg E20 (Desktop Videoconferencing)



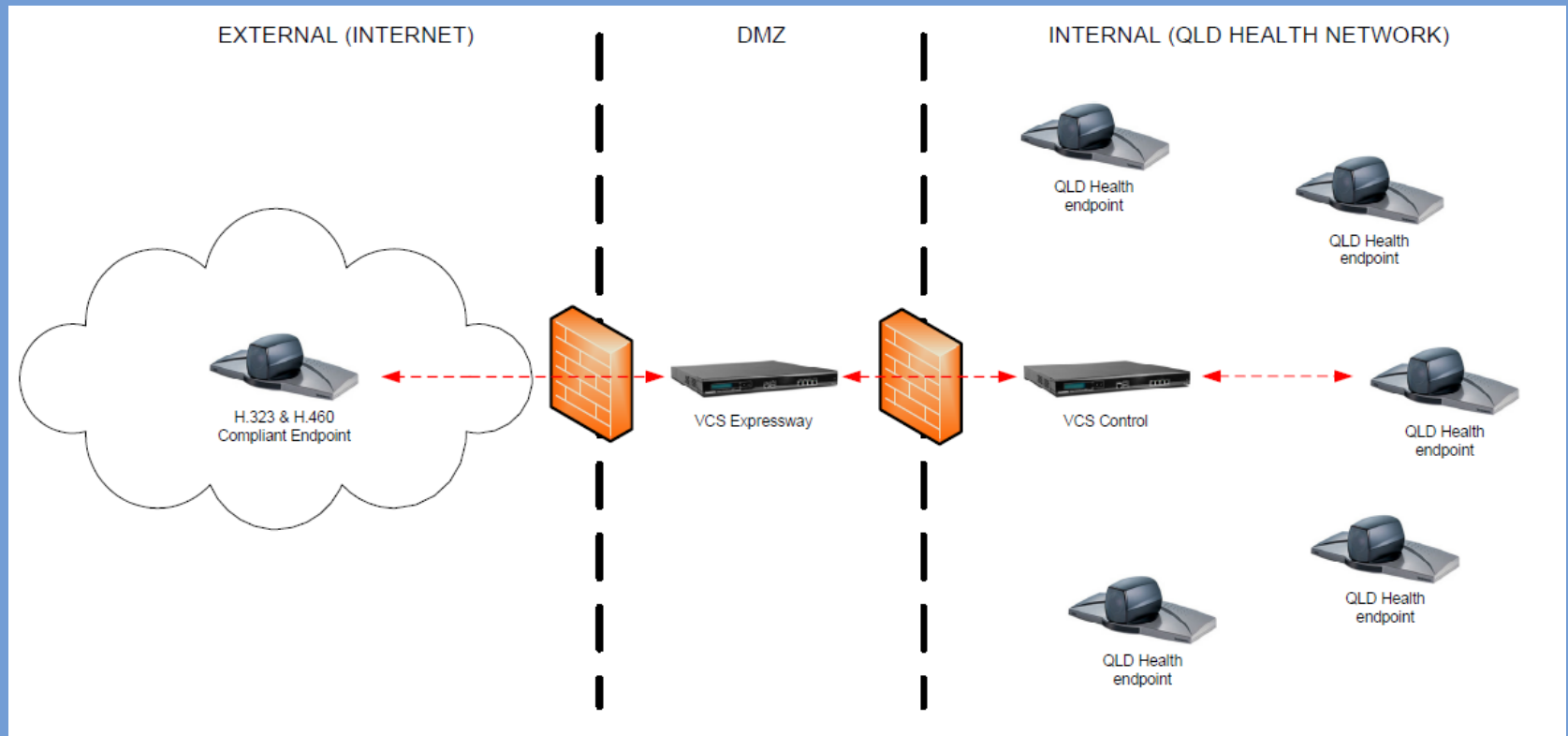
Tandberg MOVI (PC Videoconferencing)



QLD Health's Videoconference Network



Firewall Traversal





Connectivity Options

1. Installing a dedicated Internet service
 2. Assessing patient's current Internet capabilities (if any)
 3. Next G
- All these above options will use Telehealth's Tandberg VCS Expressway (Firewall Traversal)



Dedicated Internet Service

Pros

- Should provide good level quality of service

Cons

- Installation charges
- Permanent solution



Assessing Patient's Internet

Pros

- Should provide good level quality of service
- Service is already in place

Cons

- Competing bandwidth
- Potential extra costs to patient



Next G

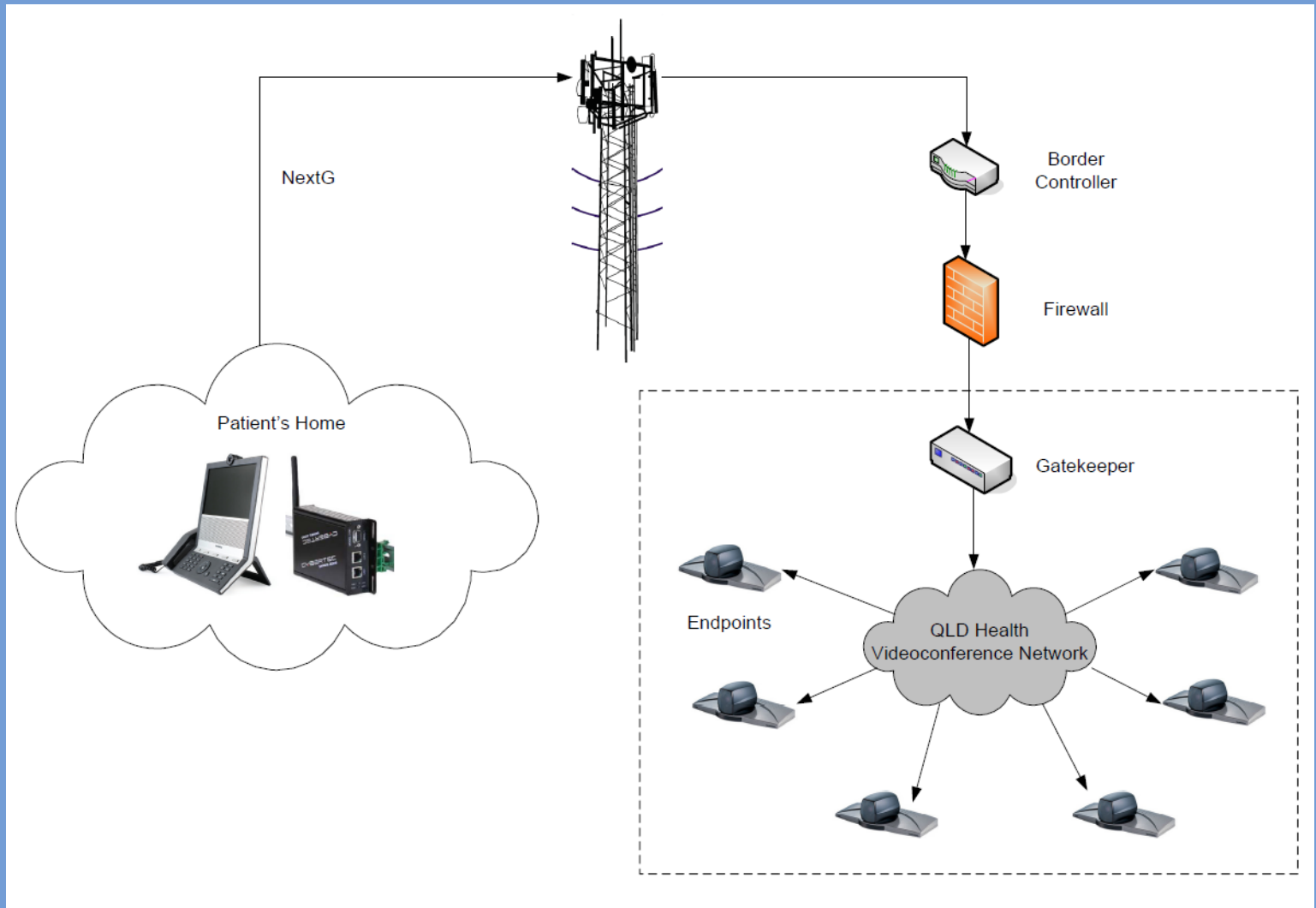
Pros

- Greater coverage
- Mobility/portability
- No installations in patient's home
- All billing back to QLD Health

Cons

- Potential lower quality of service

Next G





Problems

- Videoconference network changes
- Legal issues
- Security (Firewall)



Thank you