

Kitchens Over \$100,000

Bob Michels Construction, Inc.



PROJECT DESCRIPTION:

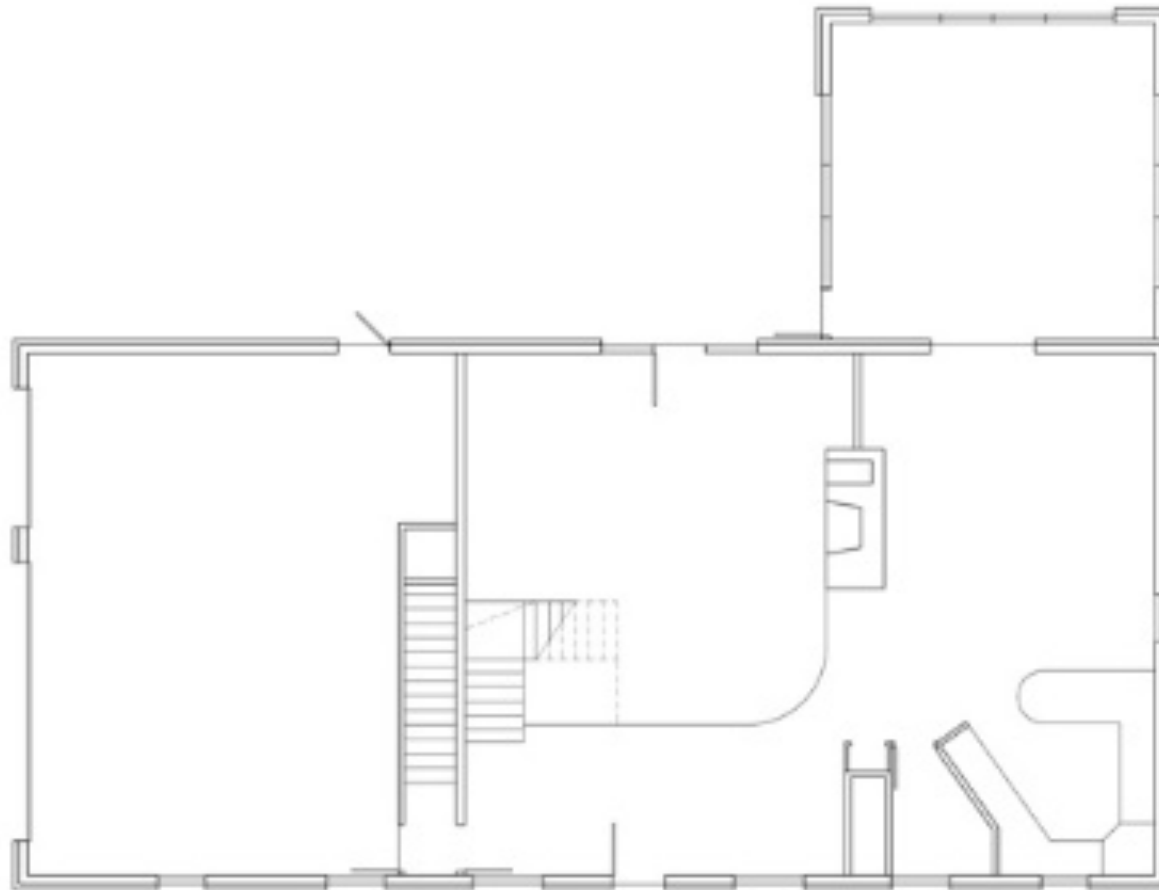
This 1987-built French Country cottage lacked design and functionality throughout the entire home. One area that was in desperate need of reconfiguration and design was the kitchen. Absolutely no consideration was given to the flow or functionality of the space. The existing kitchen was crammed into a small corner of the home, which limited storage, an area for meal prep, and space to entertain guests. Additionally, the appliances, countertops, cabinets, lighting, and flooring were dated. Bottom line, the kitchen needed an overhaul.

As the kitchen is the main gathering space and area of highest traffic in the home, the owner's made it the goal to open the space up, update all components, and make the area inviting. A significant challenge of taking on this remodel was to create more space for the kitchen while not compromising the existing structure. With help from our design team, we crafted a plan, which addressed the issues of space, functionality, and design within the existing kitchen. A key component to tackling all three issues was to swap the location of the kitchen with the dining room. Due to structural posts in the space, this was a significant task to take on, but the benefits of doing so outweighed any headaches during the process.

Once the kitchen layout had been moved, it came time to make selections that would make the kitchen comfortable and inviting while still stylish and elegant. Custom Dura Supreme Cabinetry, top-of-the-line Sub-Zero/Wolf appliances, reclaimed granary pine flooring, reclaimed fir beams, light fixtures, and "heathered" granite countertops were all installed. Additionally, a large window was placed above the kitchen sink, which provides stunning views of the historic James J. Hill Farm and contributes to the open and bright feeling within the space.

Once the new components to the kitchen were in place, the space completely transformed. The once dark and crammed kitchen turned into an open, bright, and elegant room. The new kitchen has great storage, ample counter space, and is functional for all the homeowner's needs.

FLOOR PLAN: before



EXISTING FIRST FLOOR PLAN
1/8" = 1'-0"

ISSUE
DATE 01.01.2011
REVISIONS

JOB #111723
SHEET #
1
OF 4

[illegible]

JOB WORKSHEET
SHEET #
1
OF 4

BEFORE PHOTO: #1



The existing kitchen was crammed into a small corner of the home and lacked functionality and storage. The cabinets, appliances, countertops, lighting, and flooring were dated.

AFTER PHOTO: #1



The kitchen is now open and bright. New cabinets, appliances, countertops, lights, and flooring were all installed. The new kitchen sits in the old location of the dining room.

BEFORE PHOTO: #2



This before photo shows how limited the storage and counter space was prior to the remodel.

AFTER PHOTO: #2



The layout and design were updated and as a result the space completely transformed.

AFTER PHOTO: #3



The updated kitchen features Sub-Zero/Wolf appliances and Dura Supreme Cabinetry. The remodeled kitchen is open, bright, and inviting.