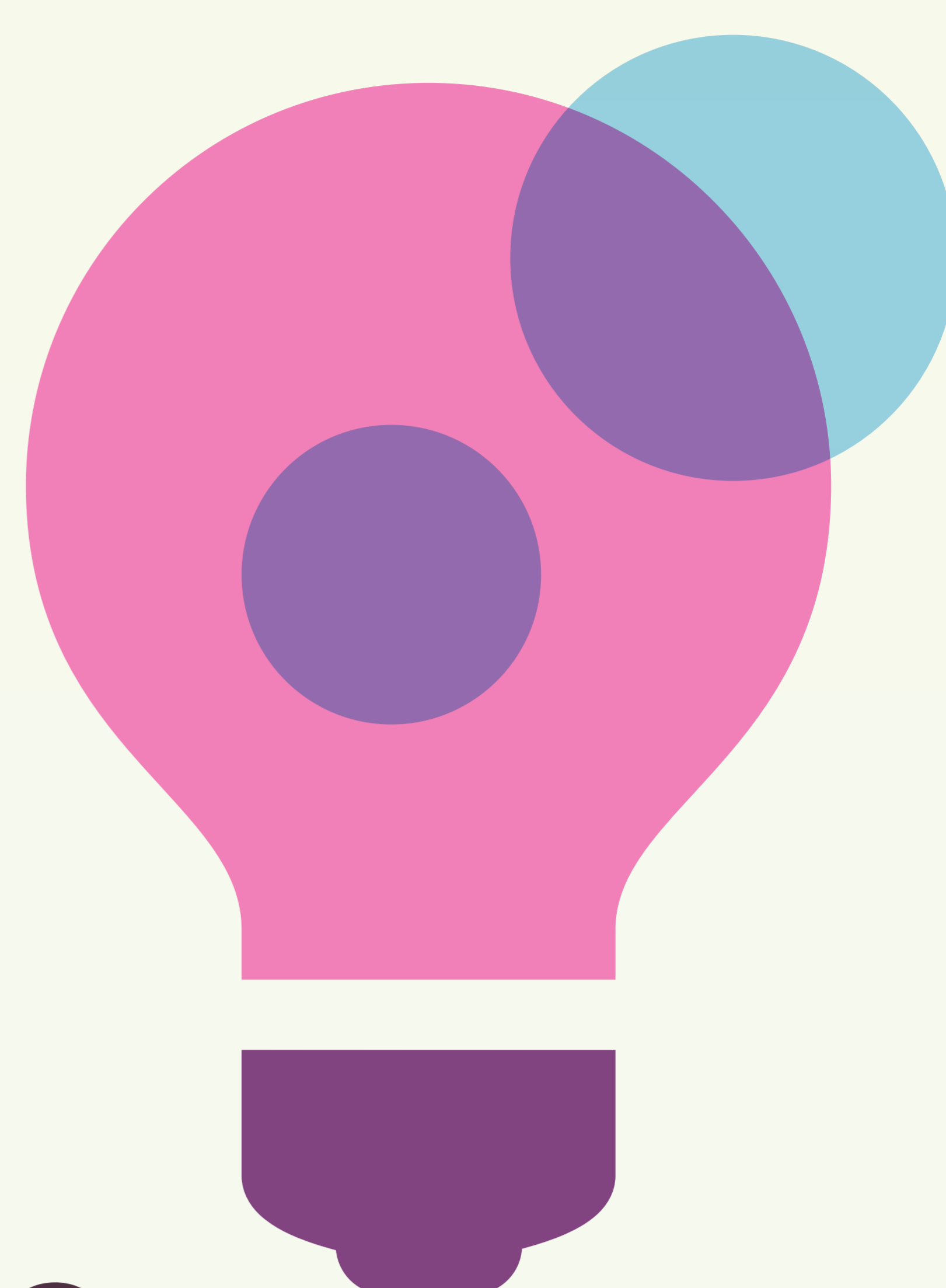


Employer insight sessions for career advisors

Institute of Student Employers

ise.



Bishopsgate Suite

The following sector insight sessions give careers advisors the opportunity to hear sector-specific insights from employers on a range of challenges they face in graduate recruitment and development. Each session will last 35 minutes and include the opportunity for Q&A.

Time	Insight Sessions
10:15 - 10:50	Public Sector Featuring employer insights from Civil Service Fast Stream, Think Ahead, Police Now, Teach First, Frontline
10:55 – 11:30	Retail/FMCG Sector Featuring employer insights from Boots, Marks & Spencer, Sainsbury's
11:35 – 12:10	Legal Sector Featuring employer insights from Addleshaw Goddard LLP, Pinsent Masons, Womble Bond Dickinson
12:15 – 12:50	Digital Sector Featuring employer insights from Capgemini, Virgin Media, Vodafone
14:00 – 14:35	EI Sector (Engineering, Energy & Industry) Featuring employer insights from Severn Trent, Thales
14:40 – 15:15	Built Environment Sector Featuring employer insights from Arcadis, Laing O'Rourke, Mace
15:20 - 15:55	Finance Sector Featuring employer insights from BNP Paribas, Deloitte, PwC

Supporting Sponsors



Debut