

DID YOU KNOW?

Counties are strengthening the mental health workforce by investing in recruitment, training and retention.

#MentalHealthAwarenessMonth



May is Mental Health Awareness Month

This May, the National Association of Counties once again invites all counties to participate in [Mental Health Awareness Month](#). By showcasing how county governments provide vital behavioral health services and resources and by advocating for key mental health reforms, we can effect significant change.

- **Highlight county innovation:** In the first half of the month, join us in highlighting local innovations that are reshaping access to mental health services.
- **Advocate for key policy priorities:** In the second half of May, we will shift focus to policy advocacy that drives systemic change, including strengthening federal partnerships and improving access to community-based care.
- **Access the toolkit:** NACo's [participation toolkit](#) includes template letters, talking points and sample social media posts to support engagement.

News

Kansas Department of Revenue Announces Blackout-Style License Plates Coming to Kansas

TOPEKA (5.12.2025) The Kansas Department of Revenue is excited to announce that the popular blackout-style license plates will soon be coming to Kansas vehicles. Beginning July 1, 2025, this highly anticipated new plate design will be available to Kansas drivers to purchase from their local county treasurer's office.

“I’m always happy to listen to my constituents about issues that matter to them,” **Governor Laura Kelly said.** “By introducing the blackout license plate style, we are giving Kansans more options on the road while still adhering to safe license plate requirements.”

Designed with an all-black background and sharp white lettering, the blackout plate adds a sleek and stylish plate design to the selection of distinctive license plates. The introduction of this plate design is in response to the increasing interest from Kansans in having a blackout-style plate option for their vehicles.

“The blackout plate design has proven to be very popular in surrounding states, and we’ve had many Kansans ask for it to come to Kansas,” **said Division of Vehicles Director Deann Williams.** “We’ve heard them loud and clear, and we are very excited to bring this highly requested plate design to Kansas vehicles this year.”

Blackout plates will be available for standard passenger vehicles and motorcycles. The cost breakdown is as follows:

- One-time plate fee: \$40
- Annual royalty fee: \$50
- Personalization fee: \$45.50 (optional)



The royalty fee collected for the blackout plate will go to the License Plate Replacement Fund, and the funds will be used by the Department of Revenue to replace deteriorated license plates.

To see all the distinct license plates currently on offer, visit www.ksrevenue.gov/dovplates.

Commerce Opens Nominations for 2025 To The Stars: Kansas Business Awards

Lieutenant Governor and Secretary of Commerce David Toland announced the Kansas Department of Commerce is accepting nominations for the **2025 To The Stars: Kansas Business Awards**. The increasingly popular annual award program recognizes companies and individuals around the state for the positive impact they make on the Kansas economy and their communities.

During the event, Commerce also will announce the prestigious Governor’s Award of Excellence, the 2025 Governor’s Exporter of the Year, and the two newest inductees of the Kansas Business Hall of Fame.

To The Stars: Kansas Business Awards

This year’s *To The Stars: Kansas Business Awards* ceremony will be held this fall, bringing together leaders, innovators and supporters from across the state to celebrate business excellence. The awards also underscore Kansas’ commitment to celebrating and supporting businesses at every stage of growth. The day and location of the event will be announced soon.

“Each year, our *To The Stars* honorees exemplify the vision, passion and drive needed to excel in business and have a lasting impact,” **Lieutenant Governor and Secretary of Commerce David Toland said.** “They go the extra mile for their customers and communities — and it’s an honor to recognize all they do for the Kansas economy. I encourage everyone to nominate their local stars for these distinguished awards.”

Companies, organizations and individuals can be nominated in the following award categories:

- **AgriBusiness** – Companies that stand out in the agribusiness industry – including agricultural production, products and services, and agri-tourism
- **Apprenticeship Champion** – Companies and other entities that excel providing registered apprenticeship programs in Kansas
- **Business Innovation** – Companies from any sector incorporating innovative technologies in their business
- **Healthcare/Nonprofit** – Noteworthy services provided by either healthcare facilities or nonprofit organizations
- **Main Street Momentum** – Businesses revitalizing main streets or neighborhood commercial districts through growth or engagement
- **Manufacturing/Distribution** – Outstanding achievement for companies of all sizes involved in manufacturing and distribution
- **Non-Traditional Talent Pools** – Companies that have gone above and beyond to hire those with prior involvement in the justice system, youth, seniors or individuals with disabilities
- **Retail/Service** – Exceptional performance by businesses selling goods, products and/or services
- **Small Business Champion – Corporate Partner Award** (state-level only) – Honors a corporation that has demonstrated exceptional commitment to small business growth in Kansas through investment and partnerships
- **Under 30 Entrepreneur** – Young entrepreneurs under the age of 30 who are achieving business success
- **Welcome Back** – Entrepreneurs and businesspeople who once left Kansas but have returned to make their mark in the Sunflower State

“During the past year, the surge of economic development successes driving the Kansas economy continued unabated,” **Deputy Secretary of Business Development Joshua Jefferson said.**

“Kansas businesses both small and large are giving outsized contributions to their communities and the entire state. We look forward to highlighting the efforts these honorees make.”

Award nominations will be accepted until July 7, 2025. To learn more, view past winners, and to submit nominations, click [here](#).

LEGISLATIVE UPDATES & NEWS



[NTIA terminates Digital Equity Act grants](#)

County awardees of the Digital Equity Act Competitive Grants Program may no longer receive federal support for planned digital adoption and literacy efforts.

[Read more](#)



[House committees mark up budget reconciliation titles](#)

As of May 14, most of the House committees have completed markups of their respective sections of the budget reconciliation bill, presenting both opportunities and challenges for counties.

[Read more](#)



[Senate passes Joint Resolution to discontinue purchasing of wi-fi hotspots through E-Rate Program](#)

The rule came amidst a broad increase in the purchasing of Wi-Fi hotspots by local governments and anchor institutions to support mobile connectivity for students on buses or in unconnected homes during and after the COVID-19 pandemic.

[Read more](#)



[House draft bill text proposes FEMA reform package with major wins for counties](#)

The bill would remove FEMA from the Department of Homeland Security and reestablish it as an independent, cabinet-level agency.

[Read more](#)



[Proposed federal mandates cloud opioid treatment](#)

Counties are positioned to quickly feel the effects of Office of National Drug Control Policy's new priorities.

[Read more](#)



[Ongoing support is crucial for counties tackling overdose rates](#)

The best treatment option for polysubstance use is "contingency management," which is when someone with substance use disorder is given an incentive, such as money, for not using.

[Read more](#)



[County official urges Congress to boost brownfields cleanup funding](#)

Oswego County, N.Y. Clerk Terry Wilbur told the House Transportation and Infrastructure's Subcommittee on Water Resources and Environment that brownfields can present land use challenges and negatively affect property values, but can provide counties with an opportunity to revitalize their economies and communities.

[Read more](#)

Broadband Partners,

On May 9, 2025, the Kansas Office of Broadband Development received a termination notice from the Trump administration for the **Digital Equity Capacity** grant program. The Digital Equity Capacity program was created to enhance digital opportunity efforts and expand workforce skills, education, and other resources. The program would have provided grants to address digital skills, civic engagement, device distribution, economic development, online access to health and mental wellness services, online accessibility and affordable access to broadband services for Kansans. This termination notice means all Digital Equity Capacity work must cease and no grants will be awarded.

The Digital Opportunities to Connect Kansans (DOCK) and Advancing Digital Opportunities to Promote Technology (ADOPT) programs are not affected by this termination and will continue as scheduled. [DOCK 2.0](#) award announcements will be made this month and [ADOPT 2.0](#) award announcements will be made later this summer. Thank you for your patience, understanding, and continued commitment in bridging the digital divide.

Please continue to stay connected and engaged.

KOBD team

KDOT renews warning about toll scam texts

(5.12.2025) The Kansas Department of Transportation is warning the public about a new scam involving fraudulent text messages – known as smishing – that falsely claim to be from KDOT and demand payment for unpaid tolls.

KDOT does not collect tolls for any roadway and does not request or collect payment via text message.

These messages are not legitimate. Do not click or open links. Clicking links may expose your personal and financial information to scammers.

Never share sensitive personal or financial information via text message or by clicking on unknown links.

If you've received a scam message, delete and report as junk. If you've provided payment information at a fraudulent web site, contact your bank or credit card company immediately.

Stay informed about official KDOT information by visiting our official website at ksdot.gov and our verified social media channels.

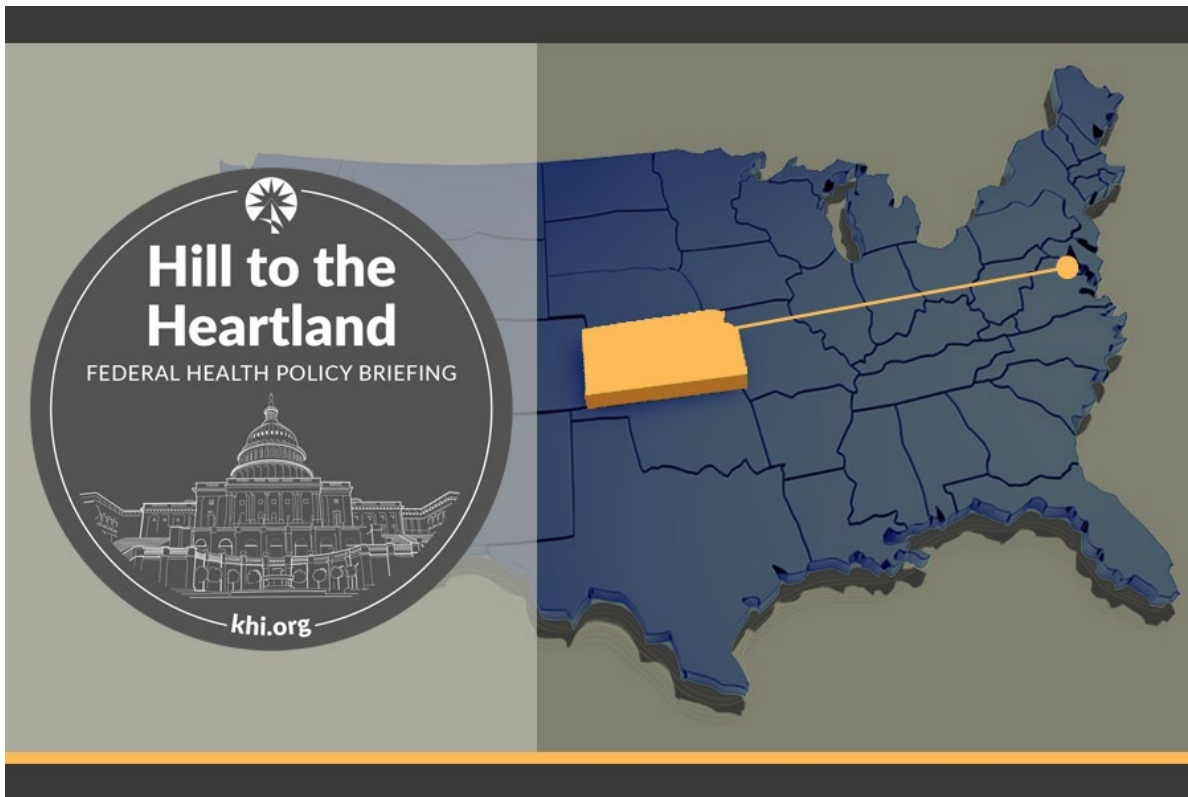
A graphic with a dark blue background. On the left, a hand holds a smartphone displaying a fraudulent text message. The message text includes: "Final Notice Enforcement will begin after May 14th. As of today, your tolls are still unpaid. If you still don't pay your tolls tomorrow you will face the following consequences: The DMV will suspend your vehicle. You will face legal action and damage to your credit. You may be considered an illegal driver. Please pay before enforcement. Pay Now: [redacted] (Reply Y and re-open this message to click the link, or copy it to your browser.)" At the bottom of the phone screen, the word "SCAM" is written in large, red, bold letters. On the right side of the graphic, the text "SCAM ALERT!" is written in large, white, bold letters. Below that, it says "Do NOT open or click links!" in white. At the bottom right, it says "REPORT IT. DELETE IT." in white. A yellow bullet point next to the text reads: "• KDOT does not collect tolls or request payment via text message".

SCAM ALERT!

Do NOT open or click links!

• KDOT does not collect tolls or request payment via text message

REPORT IT. DELETE IT.



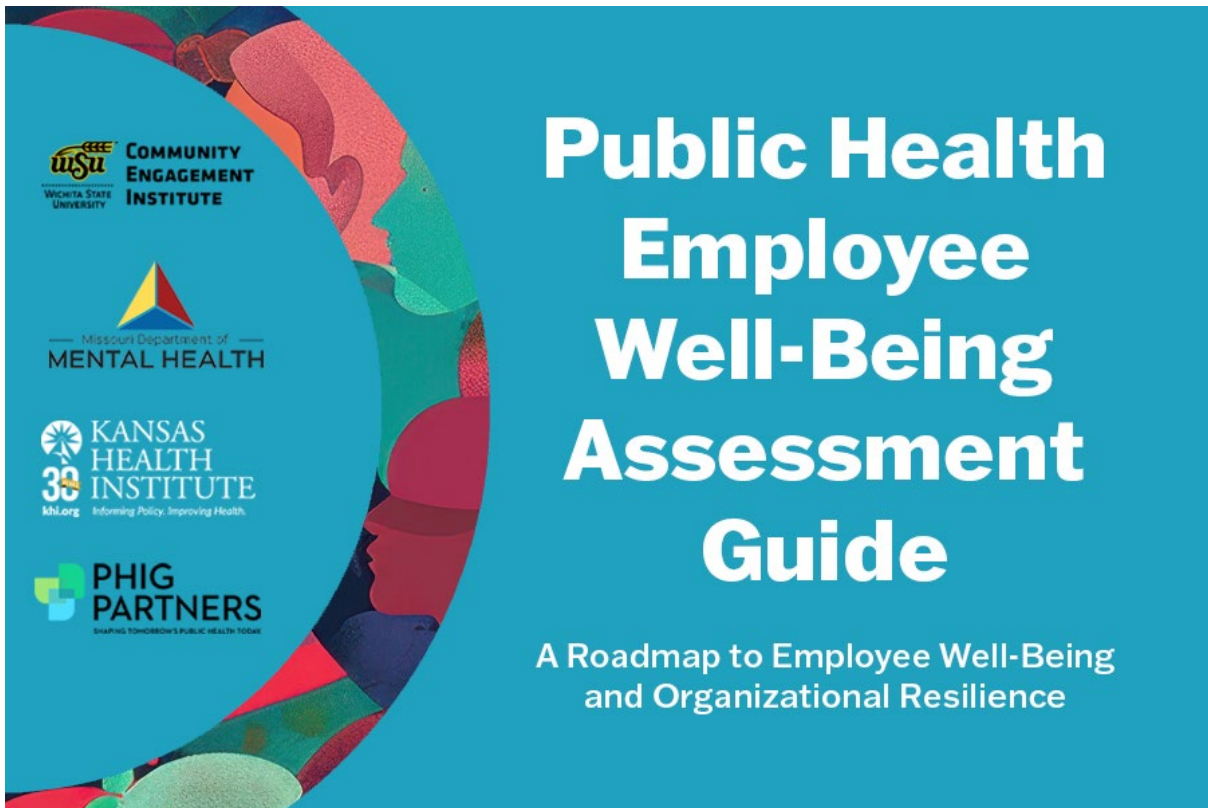
Kansas CHW Infrastructure: How Federal Funding Changes Could Impact Workforce Sustainability

Hill to the Heartland: Federal Health Policy Briefing

The early termination of CDC's Community Health Workers for COVID Response and Resilient Communities grant has created uncertainty for the future of Community Health Worker workforce development and sustainability in Kansas. While key elements remain in place, the loss underscores challenges of relying on temporary federal funding.

Learn more in our latest edition of *Hill to the Heartland: Federal Health Policy Briefing*, which features products focused on federal health policy changes and impacts on Kansas.

LEARN MORE



Insuring a sustainable public health workforce is not just about supporting individuals. It requires transforming organizational culture to make public health agencies great places to work.

The *Public Health Employee Well-Being Assessment Guide*, developed by authors from Wichita State University and the Missouri Department of Mental Health, offers support and tools to enhance employee well-being within the public health sector and increase the ability of public health organizations to attract and retain employees.

After presenting a vision for a resilient public health organization, this resource provides an assessment tool for identifying and diagnosing issues affecting well-being in an organization and tips and strategies for addressing challenges.

Conducting a comprehensive workforce well-being assessment and using an actionable guide can help organizations build supportive workplace cultures, boost job satisfaction and equip managers with the skills to better support employees — ultimately strengthening and empowering the public health workforce.

[LEARN MORE](#)

May is National Motorcycle Safety Month

As the weather warms up, you've probably already seen more motorcyclists on the roads around the state.

In 2023 in Kansas, crash data shows there were 926 motorcycle-involved crashes. In those incidents, **41 people died** and 840 were injured.

Mutual respect and thoughtfulness from all drivers and riders users will help reduce crashes, deaths, and injuries on our roads.

Tips for drivers:

- Yield to motorcyclists especially while turning at intersections.
- Check all mirrors and blind spots for motorcycles before changing lanes or merging with traffic.
- Allow more follow distance when behind a motorcycle.
- Allow motorcycles the full width of a lane at all times.

Tips for motorcyclists:

- Wear protective gear and a DOT-compliant helmet. High visibility gear will help you be seen.
- Take a motorcycle safety course and keep your bike well maintained.
- Don't ride in the blind spots of motor vehicles.
- Drive and ride defensively.



KANSAS **Traffic Safety**
Resource OFFICE



Educational Opportunities



Virtual Presentation: Regional Housing Development & Community Solutions Sessions

In March and April 2025, Kansas Housing Resources Corporation (KHRC) program staff visited the six geographic regions of the state to meet with our partners and stakeholders in-person. For those unable to attend the sessions, KHRC is pleased to offer a virtual presentation to share key program updates and initiatives.

Virtual Presentation
May 21 | 10:30 a.m.

REGISTER HERE

During the virtual presentation, staff will provide information on the following resources:

- Moderate Income Housing (MIH)
- Kansas Housing Investor Tax Credit (KHITC)
- Revolving Loan Fund (RLF)
- Home Loan Guarantee for Rural Kansas (HLG)
- First Time Homebuyer Program (FTHB)

A portion of the presentation will be dedicated to answering questions from attendees regarding the programs listed above. Questions must be submitted to the KHRC team in advance at MIH@kshousingcorp.org, and they will be answered on a first-come, first-served basis. While we may accept some questions during the virtual session, the session may not provide adequate time to address them all, so early submission is encouraged.

The session is geared towards the following:

- Cities/counties
- Builders/developers
- Bankers
- Real Estate Agents
- Potential Homebuyers
- Nonprofit or Social Service Providers

- MIH, KHITC, and/or RLF applicants that were not awarded in prior rounds
- Individuals/organizations interested in applying in future MIH, KHITC, and/or RLF rounds

If you are interested in applying for one or more of the resources listed above, we encourage you to attend the virtual presentation. [Register](#) in advance for this meeting.

We look forward to working together to address the housing needs in your community!



Economic Development & Your Municipal Airport 101 **May 21, 2025**

If your community is served by a local or regional airport, is it a key part of your economic development strategy? If you don't have an airport now, would learning the basics of thriving, community-owned airports add to your cache of economic development knowledge?

As executive director of the Salina Airport Authority for 40 years, Tim Rogers led the successful growth of the nationally recognized Salina Regional Airport and Industrial Center. After retiring in July 2024, Tim now assists public airport operators with issues ranging from day-to-day operations to long-range planning for airport growth.

REGISTER HERE

NextGen EcoDevo Session 4: 13 Ways to Kill Your Community May 29, 2025

You are invited to participate in the fourth of six (one-hour) online discussions to explore reasons why youth leave your community and what can be done to get Gen Z back and Generation Alpha to love their hometown. This is highly interactive learning using the book ***13 Ways to Kill Your Community*** (author Doug Griffiths, 2016) and the experience of participants.

City and county staff, elected officials, economic development folks, and community boosters are all welcome. This will be a safe space to discuss lessons learned in other communities and get feedback on your ideas before repeating a mistake made elsewhere.

INK Hosting 2nd Annual Showcase Event on May 22

The Information Network of Kansas will host the 2nd Annual Showcase Event on May 22, 2025, at the Sunflower Foundation in Topeka.

The event will enable state and local governmental agency leaders to learn more about the INK mission and services. INK works to provide public access to state and local government data and services.



There will be demonstrations provided on Assessment Connect, a new tool that provides detailed information on commercial, residential, and agricultural property assessments on a county-by-county level. There will also be breakout sessions to demonstrate Engagement Builder, a tool to help to create online forms, and the KanPay payment processing system.

The Showcase Event will be held May 22, 2025, from 1 to 4 PM at the Sunflower Foundation. We are still working on more demonstration ideas; more demonstrations will be added.

This is a great opportunity for state and local government leaders to learn more about the services provided by the Information Network of Kansas.

If you plan on attending the INK Showcase Event, please email Murray McGee at murray.mcgee@ks.gov by May 15, 2025. Food and drinks will be provided.



National Association of Counties Events & Webinars

May 19 | 1:00 p.m. EDT

REGISTER

[Impacts of Federal Immigration Policy on Local Governments \(Part 2\)](#)

May 20 | 3:00 p.m. EDT

REGISTER

[Understanding the House Ways & Means Tax Proposal: Key Takeaways for County Governments](#)

May 21 | 1:00 p.m. EDT

REGISTER

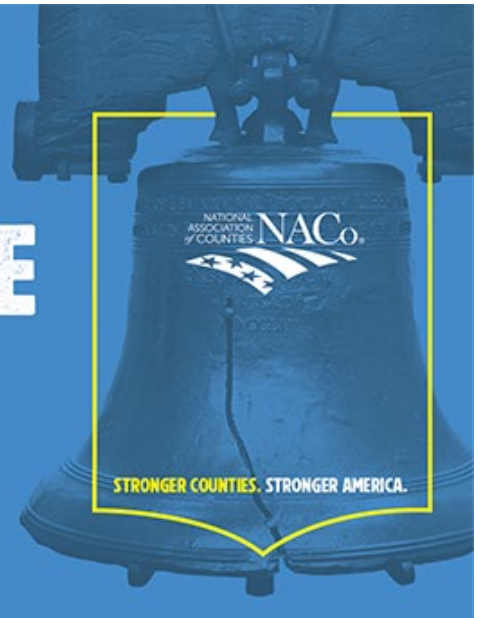
[Safeguarding Taxpayer Assets: Inside Suffolk County's Bank Account Collateralization Program](#)

View all of NACo's upcoming events and webinars [here](#).

NACo 90TH ANNUAL CONFERENCE & EXPO

PHILADELPHIA CITY
& COUNTY, PA.

JULY 11-14



LOVE Philly at NACo's 90th Annual Conference & Exposition

July 11-14, 2025 | CITY & COUNTY OF PHILADELPHIA, PA.

There is so much to love about celebrating [NACo's 90th Annual Conference & Expo](#) in the City and County of Philadelphia, Pa.

Get ready to experience history, innovation and vibrant culture all in [one unforgettable destination](#).

- Walk through history at Independence Hall and the Liberty Bell
- Explore world-class museums like the Philadelphia Museum of Art and the Franklin Institute
- Savor iconic eats—yes, the cheesesteaks, but also a booming culinary scene
- Feel the energy of live music, murals and festivals across the city

As always, the conference schedule also offers ample opportunities to see local county sites through mobile tours and networking receptions held at locations like Reading Terminal and the National Constitution Center.

With the conference located in the heart of the city, you'll be steps away from all Philadelphia has to offer. Don't miss this opportunity to connect, learn and explore.

[REGISTER TODAY](#)

[VIEW SCHEDULE](#)



JOHNSON COUNTY
KANSAS
Medical Examiner's Office

KU AREA HEALTH
EDUCATION CENTER
The University of Kansas Medical Center

KANSAS CORONER AND MEDICOLEGAL DEATH INVESTIGATION CONFERENCE 2025

June 4, 2025 8:30 am - 4:30 pm | Hilton Garden Inn | Salina, KS

OBJECTIVES

At the completion of this program, participants should be able to:

- Identify coroners' and death investigators' responsibilities when working homicide scenes with Kansas Bureau of Investigation.
- Examine the scientific logic used by forensic pathologists in determining cause and manner of death.
- Identify proper knowledge and abilities in completing Kansas death certifications for coroners.
- Describe proper death certification methods.
- Identify helpful practices for speaking with family members of decedents in a caring manner during interviews.
- Discuss the idea of "self-care" for the staff involved in death investigations.
- Recognize and outline the characteristics from the scene and postmortem examination of a Sudden Unexpected Infant Death (SUID).
- Describe the purpose of doll reenactment and completion of SUIDI reporting form.

CONFERENCE FEE

Early Bird Rate - \$75.00 on or before May 1, 2025
Regular Rate - \$100 after May 1, 2025.

Please note: There will be a \$15 administration fee for registrations cancelled by end of business day on **May 21, 2025**. After that date, no refunds will be administered.



REGISTRATION can be made by scanning the QR code, or one of the following methods:

Phone: Call (620) 235-4040

Online: <https://www.eeds.com/live/813744>

*Seating is limited, and preregistration is required by 5 p.m., **May 23, 2025**.

HOTEL BLOCK RATE is \$139.00 plus taxes and can be reserved by using this direct link **Hilton Garden Inn** or by calling 785-309-0440 and providing the code 6KUMC. Rooms are limited. **Rate is valid until May 4, 2025**.

COURSE DESCRIPTION

This comprehensive conference delves into the collaboration amongst coroners, forensic centers and law enforcement. From the first call through the postmortem examination and cause of death determination, tools will be provided so participants can better serve their communities. Participants will gain an understanding of how forensic pathologists determine manner and cause of death; and the importance of reporting this information on the death record. This specialized conference is designed to equip medicolegal death investigation professionals with the knowledge and skills necessary to speak with family members of decedents.

PLANNING COMMITTEE

Course Director: Diane Peterson, MD

Committee members:

Kay Haug, Sara Hortenstine, Daina Zolck, Mark Bolinger

The views and opinions of the presenters are not those of the American Board of Medicolegal Death Investigators

AGENDA

- 7:30-8:30: Registration/Sign In
- 8:30-8:45: CE Info and Welcome
- 8:45-9:45: **Working Together: Knowing your Role at the Scene**
Cody Goforth, Senior Special Agent,
Kansas Bureau of Investigation
- 9:45-10:45: **Opining in Forensic Pathology and Common Mistakes in Death Certification**
Alfonzo Halfin, MD;
Forensic Medical Kansas City
- 10:45-11:00: Break
- 11:00-12:00: **Death Certification for Coroners**
Harley Schainost, MD,
Deputy Coroner/Medical Examiner,
Sedgwick County Regional
Forensic Science Center
- 12:00-12:30 LUNCH
- 12:30-12:45 **Kansas Bureau of Investigation's Expanded Toxicology Program**
Patrick Porubsky,
Kansas Bureau of Investigation
- 12:45-1:45: **Sudden Unexplained Infant Death Investigation**
Ayla McClain, F-ABMDI, Chief Medical
Investigator, Johnson County Medical
Examiner's Office
- 1:45-2:15: **How to Visit with Families**
Abigail Smith, D-ABMDI,
Medical Death Investigator III
Johnson County Medical
Examiner's Office
- 2:15-2:45: **Self-Care in Death Investigations**
Joy Davis, Forensic Autopsy Technician,
Johnson County Medical
Examiner's Office
- 2:45-3:00: Break
- 3:00-4:00: **Panel Discussion**
Diane Peterson, MD, Chief Medical
Examiner, Johnson County Medical
Examiner's Office, Moderator;
Cody Goforth; Alfonzo Halfin, MD;
Harley Schainost, MD; Ayla McClain;
Abigail Smith; Joy Davis
- 4:00: Conclusion

CONTINUING EDUCATION CREDIT:

All participants requesting continuing education credit, or a certificate of attendance must complete documentation of attendance and evaluation form online within the timeframe noted.

In support of improving patient care, University of Kansas Medical Center is jointly accredited by the Accreditation Council for Continuing Medical Education (ACCME), the Accreditation Council for Pharmacy Education (ACPE), and the American Nurses Credentialing Center (ANCC), to provide continuing education for the healthcare team.



PHYSICIANS:

AMA PRA Category 1 Credit

The University of Kansas Medical Center designates this live activity for a maximum of 6 *AMA PRA Category 1 Credit*™. Physicians should claim only the credit commensurate with the extent of their participation in the activity.

American Board of Medicolegal Death Investigators (ABMDI) Pending approval

All others will receive a certificate of attendance.

NONDISCRIMINATION STATEMENT

The University of Kansas is an equal opportunity/affirmative action institution.

PROGRAM ACCESSIBILITY

We accommodate persons with disabilities. Please call KU Medical Center AHEC at (620) 235-4040 to discuss your needs.

WEBINAR

June 5, 2025 | 1:30-3:00 p.m. CDT

MIH Strategic Directions



Let's talk about the next steps for mobile integrated healthcare (MIH)!

Date: Thursday, June 5, 2025

Time: 1:30-3:00 p.m. CDT

Location: Zoom virtual meeting – link will be sent with confirmation email

On Aug. 5, 2024, 40 participants from the Health and Human Services (HHS) Region VII states – Iowa, Kansas, Missouri and Nebraska – came together to [discuss the strategic direction for MIH programs and policies](#). It is time for the region to come together to continue the conversation.

Join us on June 5 to review the findings from the strategic thinking session and discuss key factors that influence the growth, sustainability and effectiveness of MIH programs and policies.

Register Today!

What to Expect

- **Strategic Insights:** Take a deep dive into the key findings and takeaways from the August 2024 strategic thinking session, including partnership opportunities and potential next steps for MIH programs and policies.
- **Informed Perspectives:** Hear from a dynamic panel of experts as they discuss key factors influencing the successful implementation of MIH programs and policies.
- **Actionable Next Steps:** Explore potential next steps for MIH programs and policies in the region.

Speakers

Presenter: Wyatt Beckman, M.P.H., *Senior Analyst, Kansas Health Institute*

Panel Discussion:

- **Chrissy Bartel**, *Paramedic & Director, Norwich EMS, and President, Kansas EMS Association (KEMSA)*
- **Justin Duncan**, *MSc., NRP, CCEMT-P, EMT-CP, FP-C, President, SHO-ME MIH Network, and CEO, Washington County Ambulance District*
- **David Jordan**, *M.P.A., President and CEO, United Methodist Health Ministry Fund*

Supervisory Skills for Success



FMLA, ADA, Harassment, Oh My!

Presentation by Forrest Rhodes

Highlights:

- Did my employee just put me "on notice?"
- Responding to harassment concerns.
- Why you want HR on your team.

How to be the Boss Without Being Bossy

Presentation by Mike Taylor

Highlights:

- Hiring the right talent for the job.
- What if I got it wrong?
- Managing a difficult person.

Fee is \$95 - After May 9, 2025 - \$110
Lunch will feature a potato bar and salad

Thursday, June 12, 2025
9 a.m. to 4 p.m.
Hilton Garden Inn and Convention Center,
3320 S. 9th St., Salina, KS 67401

Proudly sponsored by
Kansas County Human Resource Association



Scan here with
your smartphone
to complete your
room reservation.

WSU CITY/COUNTY MANAGEMENT SUMMIT

JUNE 12, 2025

INNOVATE TO ELEVATE

REGISTER NOW



The City/County Management Summit is an opportunity to connect with local government management professionals from across Kansas to learn about the latest topics and trends relevant to you. Learn ways to update your zoning code to enhance housing development, expand your airport's business development opportunities, enhance the effectiveness of your advisory boards, and more!

More information is posted on the PPMC website at [WSU City/County Management Summit](#).

KANSAS ASSOCIATION
OF COUNTIES



FOUNDATIONS IN
COUNTY GOVERNMENT
PROGRAM

Foundations in County Government Program is the Kansas Association of Counties foundational leadership program that is available for **all county employees**, elected as well as appointed, at all levels within any county department.

Ready to Begin? First Step: Program Enrollment. If you are ready to begin and would like to enroll in the Foundations in County Government certificate program, please email Kimberly Qualls, qualls@kansascounties.org for more information.

Next Step: Class Enrollment. Below you will find the current workshop classes scheduled for the FCG program.

Budgeting & Finance Workshop

[REGISTER HERE](#)

Date & Time: Friday, September 19, 2025; 8 AM – 4 PM

Location: [Butler County EMS Station, 701 N Haverhill Road, El Dorado, KS, 67042](#) (Parking is available in the front and on the north side of the building.)

Workshop Fee: \$100 (Coffee service and lunch included.)

Instructor: Ryan Adkison, Butler County Assistant Administrator/Finance Director

Budgeting and Finance is a required role of the county commission as well as other elected officials and staff. The number and scope of county services have expanded in response to intergovernmental mandates and long devolution trends. The dizzying pace of technology innovations promises long-term efficiencies for county operations, but in the short run, requires a significant financial investment. This course defines the role of the county commission as financial policy makers and related roles of citizens, other elected officials, and staff. In addition, this class will address current tips on how to manage the Revenue Neutral Rate (i.e., Truth in Taxation) in your county.

This course will provide in-depth information on how to:

- Establish the legal parameters for the county budget and identify the functions of a capital and annual operating budget;
- Propose processes for preparing, adopting, and managing the budget;
- Explain how county government is financed and suggest techniques for estimating county revenues;
- Identify leadership strategies that contribute to wise, effective, and responsible financial decisions;
- Identify how to challenge county department heads and staff, and outside agencies to the county to use the budget process to think more strategically, more seriously, and more collaboratively about how goals can be accomplished in more creative and cost-effective ways;
- Consider the adequacy of cash balances or reserves, i.e. how much is enough, not enough, or too much, and how cash balances can be managed;
- Evaluate revenue sources other than the property tax to finance county programs and services;
- Consider how the county's fund structure enables or detracts from the ability of the board of county commissioners to effectively manage the county budget; and
- Learn ways to effectively communicate county budget information to citizens, groups, and the news media.

Instructor Bio: Ryan Adkison is the Assistant County Administrator/Finance Director for Butler County. One of his primary duties is crafting the organization's annual CIP/operating budget, which has won the Government Finance Officers Association's (GFOA) Distinguished Budget Presentation Award the past seven years. Ryan received his undergraduate degree from Emporia State University in Political Science, where he played basketball and married his beautiful bride. He received a Master's of Public Administration from the Hugo Wall School at Wichita State University. Ryan then worked in the Budget Office and Pension Office at the City of Wichita before moving to Butler County.



Are you interested in attending a FREE virtual Peer-Led Support group during Spring 2025?

The Felix Snipes Foundation, in partnership with Everytown Survivor Network, will provide a FREE Peer-Led virtual community support group for those affected by gun violence.

'Peer-led' means that these groups will be co-facilitated by a survivor of gun violence who has had similar experiences.

Our mission is to provide a safe space for survivors to find support, community, and healing through their mutual experiences of gun violence.

We understand that each individual's experience with trauma, grief, and loss is unique.

A flexible informal curriculum catering to different topics will be available.

Support group will co-facilitated by Mary Snipes, Everytown Senior Fellow and gun violence survivor, and Andrea Slagle-Abrams, LSCSW. *Space will be limited and a waiting list will be available if the limit is exceeded.*

Disclaimer: Please be advised that support groups and therapy groups have different orientations. Although participation may yield therapeutic results, the focus is NOT on promoting individual psychological advancement, which is typically the aim of therapy groups.

We encourage you to “ALWAYS prioritize self-care”.

Further information and details will be forthcoming.



FREE Peer-Led Virtual Community Support Group for those affected by gun violence

Register at <https://bit.ly/VirtualPeerSupportGroup> or scan QR code

DATES AND TIMES

May 11, 3pm-4pm (CST)

May 18, 3pm-4pm (CST)

May 25, 3pm-4pm (CST)

June 1, 3pm-4pm (CST)

June 8, 12pm-1pm (CST)

June 15, 3pm-4pm (CST)

June 22, 3pm-4pm (CST)

June 29, 3pm-4pm(CST)



Grant Training Workshops

Grant Writing Basics

In Person Workshop



Bonner Springs Police Department
215 E. Cedar, Bonner Springs, KS

Join Us June 3, 2025
9:30 am – 3:30pm
Cost: \$50 (includes lunch)

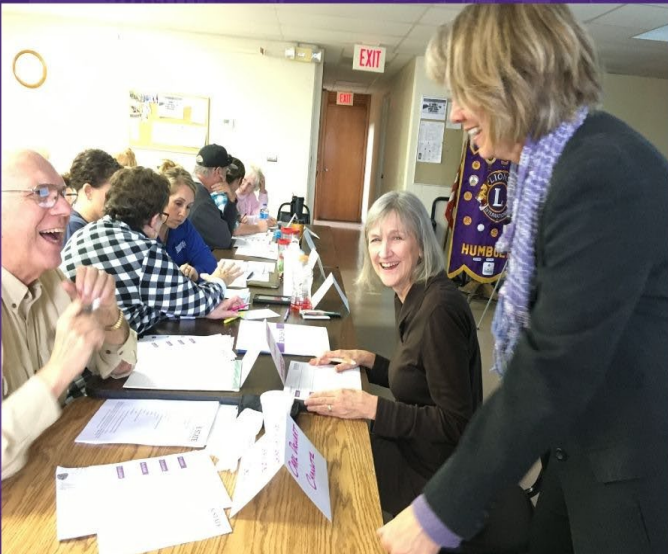
Register Today

Denise Dias ddias@ksu.edu

K-STATE
Research and Extension

Grant Writing Basics

In Person Workshop



First Presbyterian Church
112 W 5th Street, Junction City, KS

Join Us June 11, 2025
9:30 am – 3:30pm
Cost: \$60 (includes lunch)

Register Today

Renaë Riedy RenaëR@ksu.edu

K-STATE
Research and Extension



Grant Writing Basics

Online Workshop

Join Us June 10 and 12, 2025

1:30–4:30 pm CT

Cost: \$60

Register Today

<https://ksre-learn.com/grant-writing-basics>

K-STATE
Research and Extension

Grant Funding Programs

Notice of Available Funding: Federal John R Justice Student Loan Repayment Program – Office of the Kansas Governor

Funds are available from the **Federal John R. Justice Student Loan Repayment Program** for the calendar year 2025. The purpose of this program is to provide student loan repayment assistance for full-time local, state and federal government public defenders and full-time local and state government prosecutors who commit to serving as public defenders and prosecutors for at least three years. Kansas has \$63,070 available to award to prosecutors and public defenders.



Federal John R. Justice Loan Repayment funds awarded under this program are a supplement to, not a substitute for, personal student loan obligations. To be eligible to receive funding, an attorney must not be in default on repayment of any federal student loans.

For a copy of the grant application, please contact Kim Gerety at 785-368-6620; kim.gerety@ks.gov.

All applications must be postmarked to the Kansas Governor's Grants Program by Wednesday, June 4, 2025.

Commerce Launches Blueprint to Build Grant Program for Community Centers

Kansas Department of Commerce announced the launch of the ***Blueprint to Build*** program, an innovative new Community Development Block Grant (CDBG) funding round. This program provides rural Kansas communities a faster, more affordable way to construct state-of-the-art community centers.

Blueprint to Build enables communities to select from three community center models that have already been designed, providing major savings and speeding up the process of building new facilities. Centers are designed for energy efficiency and are intended to be placed in walkable downtowns or near existing community spaces as a way to both reduce infrastructure costs and support the cores of Kansas towns.

With \$14 million available to help reduce overall construction costs, the *Blueprint to Build* program makes it easier for Kansas communities to develop modern, energy-efficient community centers.



By investing in “off-the-shelf” blueprint designs, Commerce’s goal is to save communities hundreds of thousands of dollars and months of architectural work. Proposals should focus solely on construction expenses, making it easier for communities to get started and to develop manageable budgets to build and operate these facilities.

If a community intends to hold a special election to approve the issuance of bonds or to pass a sales tax (for example) to support a project, the community must: a) provide evidence of this intent in the form of a governing body resolution; and b) commit to holding this election by no later than Tuesday November 4th, 2025. If those conditions are met, applications will be reviewed with a presumption of passage of the special ballot question and, if awarded, such awards will be expressly contingent upon passage. Should the ballot question fail, any award will be automatically rescinded.

Each approved *Blueprint to Build* community center design will include:

- Multi-purpose room with flexible use options
- Serving kitchen with fixed equipment
- Fitness center
- Telemedicine office
- Welcoming lobby with small gathering area
- Restrooms
- Storm shelter
- Customizable, durable exterior and interior finishes
- Covered patios and overhead doors for fitness and multi-purpose rooms and outdoor farmers’ markets

Applicants may also incorporate optional features, such as gymnasiums or aquatic amenities that have also been pre-designed.

Cities and counties under a population of 2500 may apply for up to \$1.5 million. Communities above 2500 may apply for up to \$2.5 million. Eligible applicants include all non-entitlement cities and

counties (i.e., those that do not receive direct CDBG funding from HUD). The following entitlement communities are ineligible for funding: Kansas City, Lawrence, Leavenworth, Manhattan, Overland Park, Topeka, Wichita and Johnson County.

Interested cities and counties are required to submit a pre-application and will be contacted within 10 business days with further instructions. Only those with an approved pre-application will move forward with a full application. Approval of a pre-application does not guarantee funding.

The application period for the program opens May 1 and will close November 14, 2025. Those interested in submitted a pre-application should visit [here](#).

For additional information about *Blueprint to Build* or any other CDBG initiatives, visit the webpage [here](#) or contact the Kansas CDBG team at CDBG@ks.gov.

Safe Streets and Roads For All (SS4A) Grant Program Funding Now Available

The U.S. DOT released the latest round of funding opportunity for the [Safe Streets and Roads For All \(SS4A\) grant program](#). The following groups of applicants are **eligible** for the SS4A grant program:

- A political subdivision of a State or territory, defined as a unit of government created under the authority of State law. This includes cities, towns, counties, special districts, certain transit agencies, and similar units of local government created under State law.
- A federally recognized Tribal government.
- Metropolitan planning organizations (MPOs).
- A multijurisdictional group of entities from the ones described above (select one lead applicant from group).
- Learn more about [eligible applicants for SS4A](#).



If your organization is interested in pursuing these funds, we encourage you to contact the [Kansas Infrastructure Hub](#) to discuss how they can support your pursuit of these grant dollars.

Applications are due to U.S. DOT by June 26, 2025, but if you intend to request [Build Kansas Funds](#) please contact Kansas Infrastructure Hub soon to understand the Hub's timeline and schedule.



Request for Proposals now open! 2025 CSBG Discretionary Grant: Round 1

The primary intended use of the grant funds awarded to Kansas and to sub-grantees is “to provide assistance to local communities in Kansas, working through a network of Community Action Agencies and other neighborhood-based organizations, for the reduction of poverty, the revitalization of low-income communities, and the empowerment of low-income families and individuals in rural and urban areas to become fully self-sufficient.”

Agencies eligible to submit proposals for 2025 CSBG Discretionary funding are [Community Action Agencies](#) providing services in Kansas, [Kansas Association of Community Action Programs \(KACAP\)](#) and other non-profit organizations whose primary purpose is that of eliminating the causes and effects of poverty in Kansas.

As outlined with the [FFY 2023-2025 CSBG State Plan](#), this RFP seeks proposals for:

Innovative Projects to support innovative community and neighborhood-based initiatives related to the purposes of the [CSBG Act](#), or Training/Technical Assistance Projects to address the training and technical assistance needs of the community action network.

Applicants are advised that direct services funded by CSBG are restricted to Kansas residents with household incomes that fall at or below 125 percent of the [Federal Poverty Guidelines](#).

Applications must be emailed to CSBG@kshousingcorp.org before the close of business Monday, June 30, 2025.

For more information, visit the [CSBG web page](#) or view the 2025 CSBG RFP Documents below

[Application for 2025 CSBG Discretionary Funds](#)

[RFP Guide to 2025 CSBG Discretionary Funds](#)

[2025 Budget for CSBG Discretionary Funds](#)

[2025 Score Sheet for CSBG Discretionary Funds](#)

INK Accepting Grant Applications

The **Information Network of Kansas (INK)** is now accepting grant applications. INK has provided approximately \$10 million in grants over the years to governmental agencies. The grant program is part of INK's mission to enable digital access to state and local government information and services for public use and benefit. The grants are made possible from the proceeds generated from the services developed by INK.



Grant applications are accepted from May 1 to May 31. They are available online from the INK website at ink.kansas.gov or by e-mail upon request to INK Executive Director [Murray McGee](#).

Past projects funded through the INK Grant program include the following:

- Assessment Connect (Kansas Department of Revenue)
- Statewide Broadband Mapping (Kansas Department of Commerce)
- Updating the Amber Alert System (Kansas Bureau of Investigation)
- Online Streaming of Legislative Committee Hearings (Kansas Legislature)
- Migrating program data for the Public Transparency Database (Kansas Department of Commerce)
- Statewide integrated data hub for social insights addressing homelessness (WSU Public Policy and Management Center)

All grant awards must be approved by the Information Network of Kansas Board of Directors.

**The Information Network of Kansas is a quasi-governmental entity focused on enabling digital access to Kansas state and local government information and services for public use and benefit.

Local Government Job Openings

Ness County – County Road/Landfill Supervisor

Ness County is seeking dedicated and experienced County Road/Landfill Supervisor to join our Public Works Department. This leadership role is responsible for overseeing maintenance/operations of county roads, managing landfill and maintaining compliance with local, state and federal regulations.

Key Responsibilities:

- Supervise road maintenance crews/landfill staff
- Plan, coordinate, and monitor maintenance/construction of county roads
- Ensure safe, efficient operation of the landfill facility
- Maintain compliance with environmental regulations and reporting
- Manage budgets, equipment, and materials for road/landfill operations
- Conduct inspections and respond to public service requests or complaints
- Coordinate with engineers, contractors, and government agencies

Qualifications:

- High school diploma or equivalent; advanced training or technical certifications in public works, construction, or environmental services preferred
- Minimum 3-5 years of experience in road maintenance, landfill operations, or similar field
- Strong leadership, communication, and organizational skills
- Valid driver's license; CDL (Commercial Driver's License) required

Ness County offers excellent benefits – Medical and dental insurance, KPERS Retirement, Life Insurance, paid vacation, and sick leave. Salary dependent on experience and skills.

Obtain applications at Ness County Clerk's Office, 202 W Sycamore, Ness City, KS., or call Ness County Clerk's Office at (785) 798-2401. Applications accepted until position is filled. Ness County is at-will, EOE.

Saline County – Attorney

Represent the State of Kansas as trial attorney in felony, misdemeanor, and traffic cases. Represent the petitioner in mental illness, and alcoholic commitment cases. Research and write appellate briefs and present oral arguments.

Minimum Qualifications:

1. Graduation from a college or university with a four-year bachelor-level degree.
2. Graduation from an American Bar Association-accredited school of law with a Juris Doctor or equivalent degree.
3. Admitted to practice law before the Kansas Supreme Court and all inferior courts of the State of Kansas. Admitted to practice law before the U.S. District Court for the District of Kansas.

Desirable Qualifications:

1. Two years of experience in the practice of law, preferably as a trial lawyer in criminal law.
2. Must have excellent oral and written communication skills.
3. An ability to interact with other law enforcement agencies, social welfare agencies and public service organizations.
4. Must have a valid Driver's License and be insurable under Saline County fleet insurance policy.

Salary Information:

Anticipated starting salary: \$80,000.00 to \$100,000.00 – Depending on Qualifications.

\$5,000.00 hiring incentive dispersed immediately upon hire.

\$5,000 hiring incentive at 6 months of successful and satisfactory employment.

****New graduates will be considered****

Our Total Compensation Package:

- Enjoy a generous base salary that reflects your skills, experience and industry standards.
- Experience job security and regular salary increases.

- Comprehensive Benefits where your well-being matters to us with a package that includes health and dental insurance, and a health savings account for your future.
- A Retirement Plan for you to plan for your future.
- Generous paid leave that allows you to relax and recharge.
- Experience Career Advancements, growth and development with various training and learning opportunities to enhance your skills.

Applicant must apply on our website, by clicking the following link: [Saline County](#)

Saline County – Deputy County Attorney

Represent the State of Kansas as trial attorney in felony cases. Research and write appellate briefs and present oral arguments. Review and approve search warrants and submit them to the on-call judge for signature; Respond to major crime scenes and traffic fatalities as directed by the County Attorney or requested by law enforcement. Review affidavits for probable cause, prepare bond forms and present them to on-call judge. Provide advice, assistance and guidance to staff attorneys as requested. Assume the duties of the County Attorney as assigned by and in the absence of the County Attorney.

Minimum Qualifications:

1. Graduation from a college or university with a four-year bachelor-level degree.
2. Graduation from an American Bar Association-accredited school of law with a Juris Doctor or equivalent degree.
3. Admitted to practice law before the Kansas Supreme Court and all inferior courts of the State of Kansas. Admitted to practice law before the U.S. District Court for the District of Kansas.
4. Must have a valid Driver's License and be insurable under Saline County fleet insurance policy.

Desirable Qualifications:

1. Five (5) years' experience acceptable; 10 years preferred in the practice of law as a trial lawyer in criminal law.
2. Excellent oral and written communication skills.
3. Ability to interact with other law enforcement agencies, social welfare agencies, and public service organizations.

Salary Information:

Anticipated starting salary: \$93,430 to \$126,465 – Depending on Qualifications.

\$5,000 hiring incentive dispersed immediately upon hire.

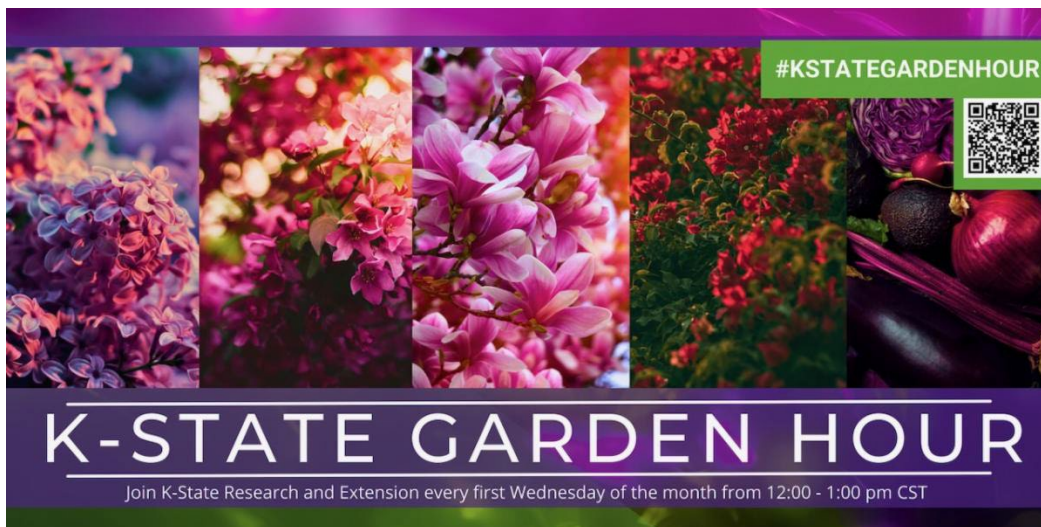
\$5,000 hiring incentive at 6 months of successful and satisfactory employment.

Our Total Compensation Package:

- Enjoy a generous base salary that reflects your skills, experience and industry standards.
- Experience job security and regular salary increases.
- Comprehensive Benefits where your well-being matters to us with a package that includes health and dental insurance, and a health savings account for your future.

- A Retirement Plan for you to plan for your future.
- Generous paid leave that allows you to relax and recharge.
- Experience Career Advancements, growth and development with various training and learning opportunities to enhance your skills.

Applicant must apply on our website, by clicking the following link: [Saline County](#)



K-State Garden Hour is hosted by K-State Research and Extension horticulture staff from across the state. Join the webinar series on the first Wednesday of each month at noon for some horticultural tips and training. Sessions are recorded and posted online after each event.

June 4: [Native and Ornamental Grasses of Kansas](#)

July 2: [Cutting-Edge Efforts in Kansas Demo Gardens](#)

August 6: [Innovations in Horticultural Research with K-State Research and Extension](#)

[Register Here](#)

Popular Sunflower Summer Program Returning for Another Summer

Lieutenant Governor and Secretary of Commerce David Toland announced that the popular **Sunflower Summer program**, which encourages young Kansans to explore and fall in love with Kansas, will return this summer. Designed for Kansas residents and families with school-aged children from Pre-K to Grade 12, **Sunflower Summer will run from July 12 to August 3, 2025.**



The program covers admission costs for eligible students and one adult guardian per attraction, per season. Tickets can be claimed through the free Sunflower Summer app and are later redeemed at the participating venues upon arrival. Kansas Tourism is encouraging eligible tourism attractions to apply to be part of this year's Sunflower Summer season. The application for attractions opens April 15 and will remain open through April 30. Participating attractions will be announced in early June. Sunflower Summer has updated venue participation requirements and reimbursement guidelines for the 2025 season. For important updates, the attraction application and additional information, visit the program webpage [here](#).



Quirky Kansas

To The Quirky

From the world's largest roadside attractions to one-of-a-kind museums, the Quirky Kansas Constellation leads to a larger-than-life trip for all ages. Visit massive artwork, wells, belt buckles, and more! The only limits are your imagination

Come Get Quirky



to the stars