



THE LEAGUE News

Volume 22 | Number 43 | OCTOBER 27, 2017 |

Follow us on:



GET OUT THE VOTE

2017 is the first year Kansans will experience fall elections for local city, county and school board elections. At the League, we're committed to engaging voters and encourage voting in elections. Here's some important links to use as you prepare to vote this November 7:

Advance Voting: Apply for an advance voting ballot [online](#). You must return the form to your County Election Office. Requests for advance voting ballots are due to your County Election office by October 31.

Find Your Polling Location: If you have registered to vote, find out where to vote [online](#).

Check Your Voting Registration: If you have registered to vote, [go online](#) to check your registration info and see a sample ballot.

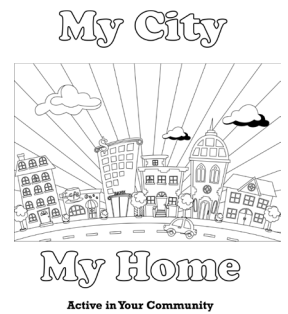
Bring Your ID: You must bring approved forms of identification to the polls. Find out what identification is approved in Kansas [online](#).

[HOME](#) | [LEAGUE NEWS ARCHIVE](#) | [EMAIL US](#) | [MUNICIPAL BUSINESS ALLIANCE](#) | [ABOUT US](#)

LOOKING FOR A WAY TO GET KIDS INVOLVED IN THE COMMUNITY? CHECK OUT OUR YOUTH ENGAGEMENT PROGRAM!

Citizen engagement is a priority for Kansas cities and the best place to start is with our youngest community members. This fall, the League re-launched our youth civic education program. We started by crafting a *Civic Learning Path* to frame the new program and demonstrate a progression of civic growth. We expanded the program to include *interactive lesson plans* and a *civic resource guide*. To increase participation, we created an *activity book*, changed our "If I Were Mayor" *writing contest* to align with Kansas Department of Education guidelines and added new social media platforms to capture the interests of high schoolers.

[Download all of the resources for free](#) and let us know how you're using the tools to increase youth engagement in your community!



DID YOU READ YOUR Kansas Government Journal YET?

Local leaders know how important quality roads, bridges and infrastructure are to a community. With fiscal challenges and ever-increasing needs, find out why local leaders need to keep the focus on funding this critical function of Kansas cities.

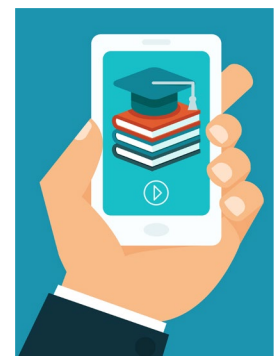
Infrastructure involving transportation, municipal utilities, energy services, and water and environmental structures are all dependent on the ability of local officials to self-determine what's appropriate for their own communities. Read more in the October edition of the *Kansas Government Journal* and check out a great infographic about roads and bridges, too!



NEW WEBSITE FEATURE - WEBINAR & VIDEO RESOURCES

The League offers monthly webinars to members for a nominal fee. These webinars generally focus on "hot topics" or issues that are specific to local governments or topics affecting our members. Our goal is to always look for ways to provide quality educational programming to local government leaders. We are pleased to announce we are now archiving our webinars and other video resources [on our website](#).

Sixty days after the live webinar takes place, the League will post video links of archived webinars for members as a resource. The cost for the re-broadcast of a webinar is \$15 per webinar (\$25 for non-members). Once you register for the re-broadcast, you will be invoiced accordingly. On the same web page, the League will be adding more video content helpful for local government leaders. [Visit the web page](#) to see our current resources.



© League of Kansas Municipalities

[HOME](#) | [LEAGUE NEWS ARCHIVE](#) | [EMAIL US](#) | [MUNICIPAL BUSINESS ALLIANCE](#) | [ABOUT US](#)



Follow us on:



For subscription changes, address changes, comments or suggestions, please contact Nikki Harrison nharrison@lkm.org

LONG-TERM WATER INFRASTRUCTURE LOANS FROM EPA

EPA's WIFIA program staff invites interested cities to join them in Lenexa to learn more about the low-cost, long-term loans for water infrastructure projects. The information session will provide prospective borrowers with a greater understanding of the WIFIA program requirements and pave the way for successful applications to the program.

The program will be held on November 29 at the EPA Region 7 Headquarters, 11201 Renner Boulevard in Lenexa. Registration for the event is [available online](#).

If you are unable to attend this session, the EPA will host additional information sessions in Denver on November 8; Nashville on November 16; Washington, DC in January 2018; and a webinar series covering the same topics on December 6, 13, and 20 from 2:00-3:30 pm ET. More details and registration information for all of these events is [available online](#).

For more information, please contact Karen Fligger, Senior Project Manager, WIFIA Program, Office of Wastewater Management, US Environmental Protection Agency, (202) 564-2992 (work) or (202) 577-9312 (cell), fligger.karen@epa.gov.



PROCLAIM NOVEMBER 'NATIONAL ADOPTION MONTH'

November is National Adoption Month. To bring attention to the need for adoptive families in Kansas, the Department for Children and Families is reaching out to local governments to spread the word about adoption. A sample of the proclamation is [online](#) and can be used by city or county governments to promote National Adoption Month.

If a local government uses the proclamation, DCF is asking to receive notice that your is city proclaiming National Adoption Month so they can help promote local events in your community. Notify DCF Communications Director [Theresa Freed](#) or Public Information Officer [Taylor Forrest](#).



KDHE SOLID WASTE GRANTS AVAILABLE

The Kansas Department of Health and Environment (KDHE) is launching a new grant program focused on recycling and composting. Applications will be accepted October 1 – December 15, 2017. The competitive Solid Waste grants are designed to support existing recycling and composting programs, and encourage the development of new programs. Kansas counties, municipalities, solid waste management regions, and private entities may apply for grants to fund new or existing waste reduction projects and associated public education materials. Forms and guides can be [downloaded online](#). For more information call the Bureau of Waste Management at (785) 296-1600.

UPCOMING LEAGUE CALENDAR

NOVEMBER

November 7	General Election
November 10	Veterans Day (Observed)
November 11	Veterans Day
November 15-18	NLC City Summit, Charlotte, NC
November 23 & 24	Thanksgiving Holiday, League Offices Closed
November 30	MTI: Social Media for Cities (Elective), Tonganoxie

DECEMBER

December 1	MTI: Social Media for Cities (Elective), Girard
December 12	Webinar: Council Orientation Best Practices
December 22	League Offices Close at Noon
December 25	League Offices Closed