

DRIVING CHANGE WITH PRIMARY CARE:

**CREATING A HEALTHIER
COMMONWEALTH**

Wednesday, June 17, 2026
12:30 - 4:00pm
MCLE | 10 Winter Place, Boston MA



Keynote Speaker
David Seltz
Executive Director
Massachusetts Health
Policy Commission



**Primary Care
Legislation Overview**
Dr. Wayne Altman
President-Elect, Massachusetts
Academy of Family Physicians
Founder, MA Primary Care
Alliance for Patients

Multi Stakeholder Reaction Panel



Lora Pellegrini
President & CEO
Massachusetts Association
of Health Plans



Maura Sullivan
CEO
The Arc of
Massachusetts



Renee Crichlow, MD
Chief Medical Officer
Codman Square
Health



Kim DeRoche, MD
Chief of Primary Care
Mass General
Brigham



Latisha Goulaud
Director of Recovery
Institute for Health
and Recovery

The Future of Primary Care Panel



Zirui Song, MD
Associate Professor
Health Care Policy
and Medicine
Harvard Medical School



Danna Mauch
President & CEO
Massachusetts
Association for
Mental Health



Robyn Riseberg, MD
Founder
Boston Community
Pediatrics



Katie Ahn
Pre-med Student
Tufts University

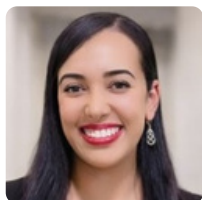


Asaf Bitton, MD, MPH
Executive Director
Ariadne Labs

Moderators



Olivia Liao, MD, F.A.C.S.
Immediate Past President
Massachusetts
Medical Society



Glavielinys Cruz, Psy.D., LMHC
Owner, Wellness Way
Psychological Services
Lynn Community
Health Center

Closing Speakers



Senator Cindy Friedman
Chairperson
Joint Committee on
Health Care Financing



Rushika Fernandopulle, MD
CEO
Liza Health

THANK YOU TO OUR SPONSORS

