



NEW!

## OASIS-D

Two FULL days of OASIS-D Data Collection Rules & Guidance, with an optional Certificate for OASIS Specialist-Clinical Exam Administration.



## BLUEPRINT FOR OASIS ACCURACY – OASIS-D DATA SET

OASIS data collection continues to evolve! This workshop provides instruction on the significant changes implemented with OASIS-D January 1, 2019 based on the most current CMS guidance available. This effective, up-to-the-minute education is targeted for field data collectors, their supervisors, OASIS educators and reviewers, quality improvement staff, and those preparing for the COS-C Exam.

Experience the comprehensive and nationally acclaimed two-day Blueprint for OASIS Accuracy workshop and learn to confidently teach, audit and collect OASIS-D items accurately. Through guided, expert instruction, and participation in problem-solving discussions and application scenarios, achieve mastery of the OASIS items, conventions, and the latest data collection rules.

The workshop educational objectives include:

- Selecting OASIS responses that accurately represent clinical assessment findings
- Providing accurate data for quality measurement and reimbursement
- Documenting OASIS data collection compliant with CMS resources and instructions

Rather than provide opinions, assumptions, or unfounded interpretations, the “Blueprint” presenters will model reliance on CMS guidance documents and provide and demonstrate strategies for how to find defensible answers to your OASIS questions.

[oasisanswers.com](http://oasisanswers.com)

## MAPLE GROVE, MN

Rush Creek Golf Course

7801 County Road 101  
Maple Grove, MN 55311

## Workshop

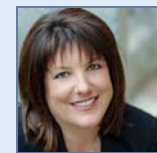
September 12&13, 2018  
8:00 am - 4:00 pm

## COS-C Exam

September 14, 2018

Registration 8:15 am - 8:45 am  
Must be seated by 8:45 am  
Testing 9:00 am - 11:30 am

## Presented by:



**Kim Corral**  
RN BSN MAED  
COS-C



**Wendy Anemaet**  
PT DPT PHD GCS  
CWS COS-C

CEU: This program has been designed to meet the continuing education requirements for the Minnesota Board of Nursing for contact hours. Application is being made to the MN Board of Physical Therapy for MN-Category 1 CECS.

Sponsored By: Minnesota Homecare Association



**OASISanswers™**

simplifying the complex

---

## WORKSHOP FACILITATORS



**KIM CORRAL**  
RN BSN MAED COS-C

**Kim** is a **registered nurse** with a **Master of Arts in Education**, practicing in home health since 1984, with much of her career in home health. She has been a leader in both **clinical and operational positions** at the regional and national level with large corporate home health agencies, providing the clinical voice of quality, while increasing efficiencies. Kim has extensive experience speaking for national home care audiences on **OASIS data collection and strategies, documentation standards, and operational processes** to support OASIS and ICD-10-CM coding accuracy. She holds the **Certificate for OASIS Specialist-Clinical (COS-C)** and is a **Senior Associate Consultant with OASIS Answers, Inc.**



**WENDY ANEMAET**  
PT DPT PHD GCS CWS COS-C

Wendy is a physical therapist since 1989 with experience in home health, acute care, rehab, outpatient, and skilled nursing. She is an Associate Professor at the School of Physical Therapy at Regis University in Denver, Colorado. Wendy is a Geriatric Clinical Specialist (GCS) and Certified Wound Specialist (CWS), has a Geriatric Training Certificate (GTC), and serves on the editorial board of *Topics in Geriatric Rehabilitation*. She has co-authored books on home health rehabilitation and has published hundreds of articles on home health therapy in peer-reviewed and trade publications. She provides training nationally on geriatric strengthening, wound assessment and management, falls prevention, and competency testing for home health physical therapists on the drug regimen review and pharmacology. Wendy holds the Certificate for OASIS Specialist-Clinical (COS-C) designation and is a Senior Associate Consultant with OASIS Answers, Inc.

---

## Accommodations

There is a limited room block rate arranged at \$129 per night at:

---

Hampton Inn Maple Grove

---

7745 Elm Creek Blvd N  
Maple Grove, MN 55369

[Click here to book your MN Home Care special rate.](#)

A shuttle has been scheduled between the hotel and Rush Creek.

**Group rate deadline: August 21, 2018**

---

## Directions

Visit <http://rushcreek.com/directions/>

Please note: Enter **Rush Creek Golf Club** if using iPhone GPS

---

## Blueprint for OASIS Accuracy Workshop

Register Online at  
[www.mnhomecare.org](http://www.mnhomecare.org)

---

### WORKSHOP FEE:

> MHCA Members	\$375
> Non-Members	\$475
> On-site registration subject to an additional \$50 fee (space permitting)	
> Online Registration Deadline:	September 5, 2018

---

## CERTIFICATE FOR OASIS SPECIALIST – CLINICAL EXAM

Secure a spot by registering at least one week in advance. Onsite exam registration may not be available.

**The Certificate for OASIS Specialist-Clinical (COS-C) Exam** is a voluntary certificate examination for those interested in demonstrating and establishing their expertise and commitment to OASIS data accuracy. Administered the day following the Blueprint for OASIS Accuracy training, the scope of the COS-C exam is similar to the Blueprint workshop agenda, covering CMS guidelines related to OASIS time points, regulations, patient populations and **OASIS-D** item specific scoring.

Candidates who successfully pass the examination are awarded the COS-C designation.

Call OASIS Answers, Inc. at (425) 868.2304 or visit [www.oasisanswers.com](http://www.oasisanswers.com) to learn more or to register for the COS-C examination.

---

### EXAM REGISTRATION FEE:

- > Initial Exam: \$250  
(reflects "Blueprint discount")
- > Renewal Exam: \$200  
(reflects "Blueprint discount")
- > Register online at [oasisanswers.com](http://oasisanswers.com)

---

### INDIVIDUALS MAY REGISTER FOR THE WORKSHOP, THE EXAM, OR BOTH.

Registration and payment for the workshop is through MHCA and registration for the COS-C examination is through OASIS Answers at [oasisanswers.com](http://oasisanswers.com)



**oasisanswers™**

simplifying the complex