

So glad to know you are here:
WELCOME Missouri Municipal League Officials

• My information for contact:

TONI PITCHFORD, DATA DISSEMINATION SPECIALIST
MISSOURI, KANSAS and ARKANSAS

deborah.t.pitchford@census.gov
312-498-2240 Office

1

CENSUS HAS A PURPOSE, LET US SHOW YOU

Our Mission:

The Census Bureau's mission is to serve as the nation's leading provider of quality data about its people and economy.

and

• **Our Goal**

Our *goal* is to provide the best mix of timeliness, relevancy, quality and cost for the data we collect and services we provide.

2

Several Topics will be covered:

- T**he new website: Data.Census.gov
- T**he current website: American Fact Finder
- and of course
- D**ecennial 2020 Census

Before we end there will be a question and answer Session but feel free to ask along the way.

3

Welcome our new website: Data.Census.gov

- American Fact Finder is going away
- All 2018 data releases will be placed on the new website
- Nothing new will be placed on AFF, but you will be able to access site as an archive:

4

Data.Census.gov

- www.data.census.gov

Please go on site and explore... upon completion of your adventure please use the feedback button and tell us if we got it right or if you have a suggestion to help make it better. We respect your opinion's and together we can make this site the best one yet.

5

Explore Census Data

The Census Bureau is the leading source of quality data about the nation's people and economy.

MISSOURI Enter what you are looking for X Search

Advanced Search

Questions? Release Notes Stay Connected

Send Feedback U.S. gov? More data available Recorded Webinar: New Updates to data.census.gov - June 2019

United States Census Bureau
U.S. Department of Commerce
Economics and Statistics Administration
U.S. CENSUS BUREAU
census.gov

6

POVERTY STATUS IN THE PAST 12 MONTHS Poverty was chosen

Missouri				
	Total		Below poverty level	
	Estimate	Margin of Error	Estimate	Margin of Error
Population for whom pa...	5,028,376	+/-4,473	793,732	+/-21,880
AGE				
Under 18 years	1,353,031	+/-6,043	252,041	+/-12,433

U.S. Department of Commerce
Economics and Statistics Administration
U.S. CENSUS BUREAU
census.gov

7

6,113,532 Total Population in Missouri

Source: 2017 American Community Survey 1-Year Estimates
https://www.census.gov/programs-surveys/acs/

ACS DEMOGRAPHIC AND HOUSING ESTIMATES Demographics will show

Missouri				
	Estimate	Margin of Error	Percent	Percent Margin of Error
SEX AND AGE				
Total population	6,113,532	*****	6,113,532	(0)
Male	3,002,664	+/-5,532	49.1%	+/-0.1
Female	3,110,858	+/-5,532	50.9%	+/-0.1

U.S. Department of Commerce
Economics and Statistics Administration
U.S. CENSUS BUREAU
census.gov

8

Re-direction of site:

Asked for quick facts
Redirected to American
Fact Finder

Table	Estimate	Margin of Error
Population estimate, July 1, 2016, (2016)	6,126,942	
Population	6,126,942	
Population estimate, July 1, 2015, (2015)	6,040,400	
Population estimate base, April 1, 2010, (2010)	5,949,823	
Population percent change, April 1, 2010 (2010) to July 1, 2016, (2016)	2.2%	
Population, Census, April 1, 2010	5,949,823	
Age and Sex		
Population under 18 years, percent	21.6%	

U.S. Department of Commerce
Economics and Statistics Administration
U.S. CENSUS BUREAU
census.gov

9

*This is only a quick peak into
DATA.CENSUS.GOV*

- We are encouraging you to go into data.census.gov and play with it, you will see a feedback tab and we urge you to send us what you think will make the website what you want which will make it user friendly
- All releases as of September 1, 2019 will be downloaded into the new site
- American Fact Finder will be available for use a while longer and set as archive so you will not loose the ability to research the data you need

10

• REFRESHER FOR SOME... INTRODUCTION FOR OTHERS...

• A simple guide to get you started:

• www.census.gov

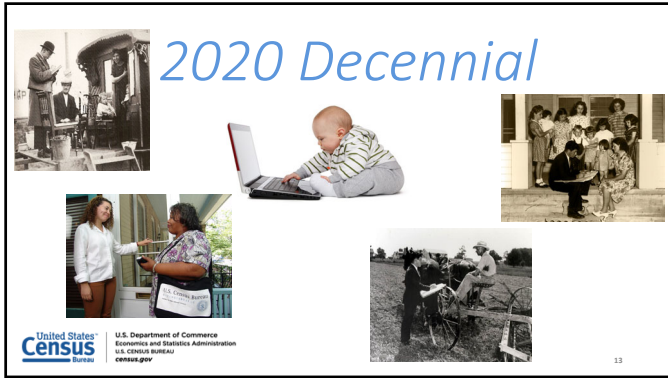
- Explore Data... click on...American Fact Finder
 - Community Facts
 - Guided Search
 - Advance Search
 - Business Builder
 - Economic Census
 - Government Census

11

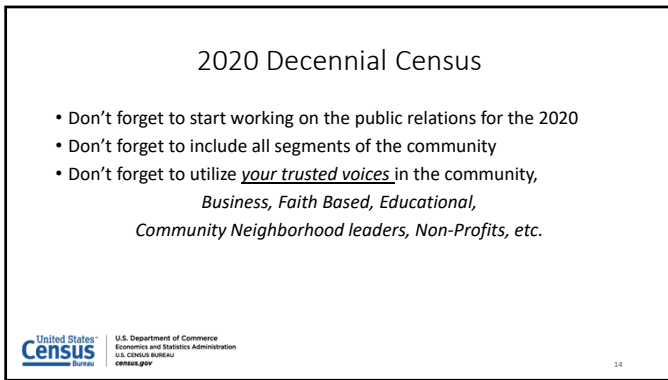
An example of continous surveys include, but are not limited to:

- American Community Survey
- Current Population Survey
- National Crime Victimization Survey
 - American Housing Survey
- Survey of Income Program Participation
 - National Health Insurance Survey
- National Ambulatory Medical Care Survey
- National Hospital Ambulatory Medical Survey

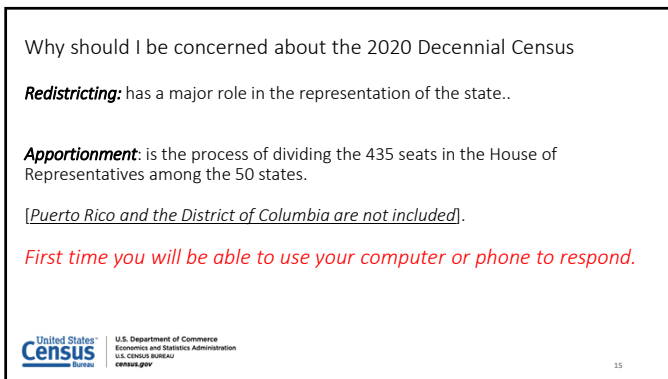
12



13



14



15

<https://www.census.gov/2010census/data/redistricting-data-map.html>

You can look at the various counties with this site. The map has a legend and is color coded so you can see if area had loss, or what Percentage of change from 2000 to 2010 Decennial Census

The Census Bureau's interactive redistricting map widget enables users to view local 2010 Census data by state, including population change and race and Hispanic or Latino origin data by county.

2010 CENSUS RESULTS
Missouri STATE POPULATION: 5,988,927
 POPULATION CHANGE BY COUNTY: 2000-2010

STATE POPULATION BY RACE MISSOURI: 2010

RACE	PERCENT OF POPULATION	CHANGE 2000-2010
White alone	82.2%	4.4% ↑
Black or African American alone	10.2%	↓
Hispanic or Latino	4.6%	↑
American Indian and Alaska Native alone	0.2%	↓
Asian alone	0.2%	↑
Native Hawaiian and Other Pacific Islander alone	0.1%	↓
Two or More Races alone	1.5%	↑
Two or More Races	1.2%	↑

STATE POPULATION BY HISPANIC OR LATINO ORIGIN MISSOURI: 2010

ORIGIN	PERCENT OF POPULATION	CHANGE 2000-2010
Hispanic or Latino	4.6%	↑
Not Hispanic or Latino	95.4%	↓

United States Census Bureau | U.S. Department of Commerce, Economics and Statistics Administration | U.S. CENSUS BUREAU | census.gov

16

<https://www.census.gov/roam>

Are you interested in the response rate for your county? The ROAM map is interactive and you can use it to see where you may want to focus on with your Complete Count Committee,

Census Response Outreach Area Mapper (ROAM)

County: 1603
 Grady County, Missouri

Low Response Score: 75.0 21.0
 2013-2017 ACS 5-year estimates

ACS Self Response Rate: 21.3
 Total Population: 2,122
 Median Household Income: \$21,188
 Median Age: 41.3
 Population Under 5: 15.1%
 Population 18 and Over: 78.1%
 Population 65 and Over: 13.8%
 Population: Non-Farm Labor: 14.1%
 Census Bureau 75 Living on Farming: 0.0%
 Small Business Children Age Band 4: 0.0%
 New High School Graduates: 11.0%
 No Health Insurance Under 19: 13.7%
 11-19-2017 11:00 AM CST
 0000130

United States Census Bureau | U.S. Department of Commerce, Economics and Statistics Administration | U.S. CENSUS BUREAU | census.gov

17

I am available for webinars; please keep in mind we are just releasing this site and there will be a few bumps along the way; but together we will smooth them out and promise to continue to give you the most accurate data available... Which means... we encourage you to encourage your constituents to respond to ongoing surveys we do year round.

United States Census Bureau | U.S. Department of Commerce, Economics and Statistics Administration | U.S. CENSUS BUREAU | census.gov

18

Questions



19

Thank You

*For your time and attention
Please feel free to contact me
if I can be of service*

20

deborah.t.pitchford@census.gov
312-498-2240

- Can't wait, need it right now
 - CALL...
- 1-800-ask-data (1-800-275-3282)
- Or EMAIL us at
 - census.askdata@census.gov

21
