



THE NATIONAL ASSOCIATION OF EMS EDUCATORS

# 2026 NAEMSE EMS EDUCATOR SYMPOSIUM & TRADE SHOW

## EXHIBITOR PROSPECTUS



Peppermill Resort  
2707 S Virginia St  
Reno, Nevada 89502



Exhibit Hall: August 13-15, 2026

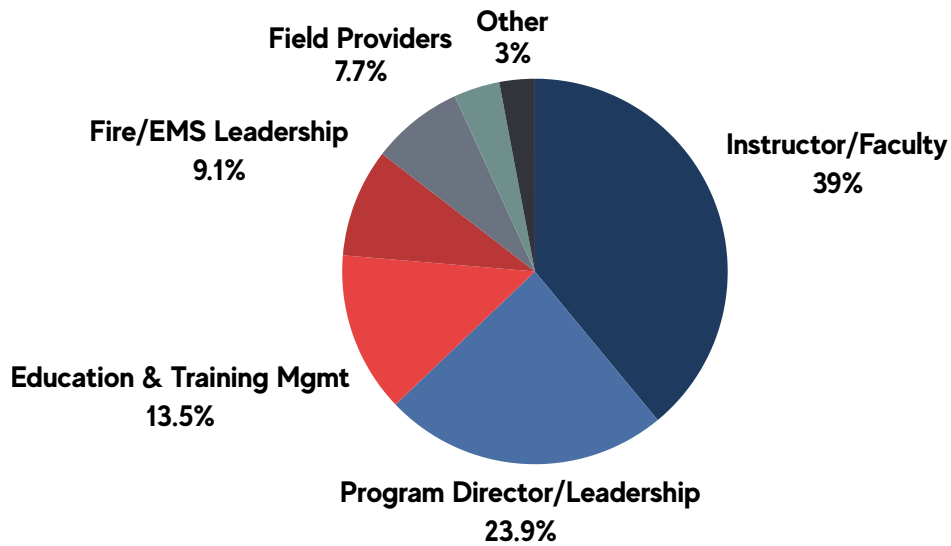
# WHAT IS THE NAEMSE EMS EDUCATOR SYMPOSIUM & TRADE SHOW?

The NAEMSE Symposium & Trade Show is the premier annual event for EMS educators, bringing together a dynamic mix of leaders from across the country. Held over several days, the symposium features educational sessions, workshops, and networking opportunities that highlight the latest trends, tools, and research in EMS education. For exhibitors, it's a unique opportunity to showcase products and services to an engaged audience passionate about enhancing their teaching practices and improving patient care.

## WHO ATTENDS?

The NAEMSE Symposium attracts attendees from all levels of EMS education, including program directors, training officers, administrators, EMS educators, brand representatives, accredited programs, national speakers, executives, industry influencers, and other key stakeholders in EMS.

### 2025 NAEMSE Symposium Attendee Occupations



## WHY EXHIBIT AT THE 2026 NAEMSE SYMPOSIUM?

Exhibiting at the 2026 NAEMSE Symposium and Trade Show offers you an unparalleled opportunity to connect with key decision-makers, educators, and professionals in the EMS education community. This event is a prime platform to showcase your products, services, and solutions to a targeted audience eager to enhance the quality of EMS training and education. With hundreds of dedicated attendees, including EMS educators, program directors, and training officers, your brand will gain visibility among those who influence training decisions across the nation. Plus, Reno's vibrant setting and the Peppermill Resort's state-of-the-art facilities create the perfect environment to network, build relationships, and generate leads. Don't miss your chance to be part of a transformative event that will elevate your business and position you as a leader in the EMS education space!

# EXHIBITOR INFORMATION

## SHOW SETUP AND HOURS

### Exhibitor Setup:

Wednesday, August 12	8:00 am - 4:00 pm
Thursday, August 13	7:00 am - 12:00 pm

### Show Hours:

Thursday, August 13	12:30 pm - 3:30 pm
Friday, August 14	11:30 am - 2:00 pm
Saturday, August 15	11:30 am - 1:30 pm

### Exhibitor Move Out:

Saturday, August 15	1:30 pm - 5:00 pm
---------------------	-------------------

### Exhibit Hall Location:

Peppermill Resort  
2707 S Virginia St  
Reno, Nevada 89502

## BOOTH RATES

ONE 10' X 10' BOOTH

Standard Exhibitor Rate: \$1,700  
Non-Profit Rate: \$850

### **NAEMSE Corporate Partner Rates**

Diamond Partner: FREE  
Platinum Partner: \$500  
Gold Partner: \$1,000  
Silver Partner: \$1,200

Corporate Partner Rates are available exclusively to current NAEMSE Corporate Partners. NAEMSE reserves the right to verify partner status and adjust pricing if necessary.

**Add a Booth Space: \$500 each**

**Add a Booth Rep: \$200 per person**

## Important Information:

- **EXHIBITOR REGISTRATION INCLUDES:** One 10x10 booth, 2 exhibitor representative badges, and a daily complimentary meal for each rep. The Peppermill Resort offers complimentary Wi-Fi for exhibitors, free parking, and provides shuttle service to and from the airport. Additional representative badges can be purchased for \$200/each. Additional 10x10 booths can be purchased for \$500/each and will include 2 additional exhibitor representative badges.
- **BOOTH FURNISHINGS:** The online exhibitor kit login will be sent to registered exhibitors. This kit contains information on how to order booth furnishings like tables, chairs, and more, which are **not** included in your registration. You will receive an email from American Exposition Services on how to create this account. It is important to be sure you have access to this site, as it is how you will furnish your booth.

## Ready to Register?

1. Visit [naemse.org/page/2026FloorPlan](https://naemse.org/page/2026FloorPlan) to select your preferred booth(s).
2. Register online at [naemse.org/event/2026exhibitor](https://naemse.org/event/2026exhibitor).
3. NAEMSE will email you an Exhibitor Agreement. Once you have signed it, you will be added to the floor plan.



Scan to view the floor plan



Scan to register

# SPONSORSHIPS

---

## GAIN EXTRA EXPOSURE FOR YOUR COMPANY!

### REGISTRATION BAG INSERT - \$750

One printed insert will be placed in every bag distributed to NAEMSE Symposium attendees.

- (350 bag inserts must be provided by exhibitor - due to NAEMSE office by July 10, 2026)

### COFFEE BREAK (x1) - \$1,200

Sponsor either a morning or afternoon coffee break during the NAEMSE Symposium. Branded signage will be displayed on the table indicating sponsorship of the event.

### EXHIBIT HALL MEAL - \$2,500

Choose to sponsor a lunch in the exhibit hall during show hours.

Includes branded signage, bag insert.

- (350 bag inserts must be provided by exhibitor - due to NAEMSE office by July 10, 2026)

### GUIDEBOOK CONFERENCE APP SPONSORSHIPS (NEXT PAGE)



To purchase a sponsorship, please scan the QR code below or visit [naemse.org/event/2026exhibitor](https://naemse.org/event/2026exhibitor). You do not need to attend to purchase a sponsorship!



**Scan to register**

# GUIDEBOOK SPONSORSHIPS

NAEMSE utilizes an event application called Guidebook. Guidebook acts as a digital program guide for attendees. Guidebook houses important event information such as:

- Event sponsor list
- Event exhibitor list
- Full symposium agenda
- Create your own to-do lists
- Create your personalized schedule
- View & participate in the NAEMSE activity feed
- Add photos to a public NAEMSE album
- View hotel maps
- And more!



Guidebook is also the application we use to give survey evaluations after every session.



**PUSH NOTIFICATIONS**  
\$100/EACH

Utilize direct attendee communications by sponsoring a push notification that will reach all attendees who download the Guidebook conference app. You can promote anything you want; your booth, a special meet-and-greet, events, or products. Just tell us what copy you would like and when you would like the notification to be sent. Sponsor must provide all texts and links for use in this notification.



**BANNER ADS**

By sponsoring this option, your ad will appear at the bottom of the Guidebook app for a set amount of time which you can decide below.

**10 seconds: \$100**

**30 seconds: \$150**

**1 minute = \$300**

**5 minutes = \$1,000**



**SPONSORED POSTS**  
\$150/EACH

Dedicated sponsor posts are integrated into Guidebook's built-in social media feed, INTERACT. This is a great way to increase visibility and ROI. Hyperlinks and/or photos can be utilized to maximize clicks.



Showcase your products and expand your customer base by exhibiting at the NAEMSE Trade Show!

# WE'LL SEE YOU IN AUGUST!

2026 NAEMSE EMS EDUCATOR SYMPOSIUM & TRADE SHOW



Reno, Nevada



August 10-15, 2026



Register Now

[naemse.org/event/2026exhibitor](http://naemse.org/event/2026exhibitor)

[www.naemse.org](http://www.naemse.org) | (412) 343-4775

250 Mt Lebanon Blvd

Suite 209

Pittsburgh, PA 15234

Questions? Contact us!

Rio Grassmyer, Digital Marketing Manager - [rio.grassmyer@naemse.org](mailto:rio.grassmyer@naemse.org)

**Cancellation Policy:** We regret that we cannot refund any exhibitor registration fees after July 15, 2026 because we must submit a complete commitment to the hotel for the meeting room facilities, materials, AV, and all food and beverage orders by that date.

