

NFRC 704-2022 [E0A0]

Fee Schedule

© 2013, 2022 National Fenestration
Rating Council, Inc.

Prepared by:

National Fenestration Rating Council

6305 Ivy Lane, Suite 410

Greenbelt, MD 20770

P: 301-589-1776

F: 301-589-3884

E: info@nfrc.org

W: www.nfrc.org





FOREWORD

The National Fenestration Rating Council, Incorporated (NFRC) has developed and operates a uniform rating system for energy and energy-related performance of fenestration products. The Rating System determines the U-factor, Solar Heat Gain Coefficient (SHGC) and Visible Transmittance (VT) of a product, which are mandatory ratings for labeling NFRC certified products, are mandatory ratings for inclusion on label certificates, and are supplemented by procedures for voluntary ratings of products for Air Leakage (AL), and Condensation Resistance. Together, these rating procedures, as set forth in documents published by NFRC, are known as the NFRC Rating System.

The NFRC Rating System employs computer simulation and physical testing by NFRC-accredited laboratories to establish energy and related performance ratings for fenestration product types. The NFRC Rating System is reinforced by a certification program under which NFRC-licensed responsible parties claiming NFRC product certification shall label and certify fenestration products to indicate those energy and related performance ratings, provided the ratings are authorized for certification by an NFRC-licensed certification and Inspection Agency (IA).

The requirements of the rating, certification, and labeling program (Certification Program) are set forth in the most recent versions of the following as amended, updated, or interpreted from time to time:

- NFRC 700 Product Certification Program (PCP).
- NFRC 705 Component Modeling Approach (CMA), Product Certification Program (CMA-PCP).

Through the Certification Program and the most recent versions of its companion programs as amended, updated, or interpreted from time to time:

- The laboratory accreditation program (Accreditation Program), as set forth in the NFRC 701 Laboratory Accreditation Program (LAP).
- The IA licensing program (IA Program), as set forth in NFRC 702 Certification Agency Program (CAP).
- The CMA Approved Calculation Entity (ACE) licensing program (ACE Program), as set forth in the NFRC 708 Calculation Entity Approval Program (CEAP).

NFRC intends to ensure the integrity and uniformity of NFRC ratings, certification, and labeling by ensuring that responsible parties, testing and simulation laboratories, and IAs adhere to strict NFRC requirements.

In order to participate in the Certification Program, a Manufacturer/Responsible Party shall rate a product whose energy and energy-related performance characteristics are to be certified in accordance with mandatory NFRC rating procedures. At present, a Manufacturer/Responsible Party may elect to rate products for U-factor, SHGC, VT, AL, Condensation Resistance, or any other procedure adopted by NFRC, and to include those ratings on the NFRC temporary label affixed to its products, or on the NFRC Label Certificate. U-factor, SHGC and VT, AL, and Condensation Resistance rating reports shall be obtained from a laboratory that has been accredited by NFRC in accordance with the requirements of the NFRC 701.

The rating shall then be reviewed by an IA which has been licensed by NFRC in accordance with the requirements of the NFRC 702. NFRC-licensed IAs also review label format and content, conduct in-plant inspections for quality assurance in accordance with the requirements of the NFRC 702, and issue a product Certification Authorization Report (CAR), or approve for issuance an NFRC Label Certificate for site-built or CMA products and attachment products. The IA is also responsible for the investigation of potential violations (prohibited activities) as set forth in the NFRC 707 Compliance and Monitoring Program (CAMP).

Ratings for products that are labeled with the NFRC Temporary and Permanent Label, or products that are listed on an NFRC Label Certificate in accordance with NFRC requirements, are considered to be NFRC-certified. NFRC maintains a Certified Products Directory (CPD), listing product lines and individual products selected by the manufacturer/responsible party for which certification authorization has been granted.

NFRC manages the Rating System and regulates the Product Certification Program (PCP), Laboratory Accreditation Program (LAP) and Certification Agency Program (CAP) in accordance with the NFRC 700 (PCP), the NFRC 701 (LAP), the NFRC 702 (CAP), the NFRC 705 (CMA-PCP), and the NFRC 708 (CEAP) procedures, and conducts compliance activities under all these programs as well as the NFRC 707 (CAMP). NFRC continues to develop the Rating System and each of the programs.

NFRC owns all rights in and to each of the NFRC 700, NFRC 701, NFRC 702, NFRC 705, NFRC 707, NFRC 708 and each procedure, which is a component of the Rating System, as well as each of its registration marks, trade names, and other intellectual property.

The structure of the NFRC program and relationships among participants are shown in Figure 1, Figure 2, and Figure 3. For additional information on the roles of the IAs and laboratories and operation of the IA Program and Accreditation Program, see the NFRC 700 (PCP), NFRC 701 (LAP), and NFRC 702 (CAP) respectively.

Figure 1

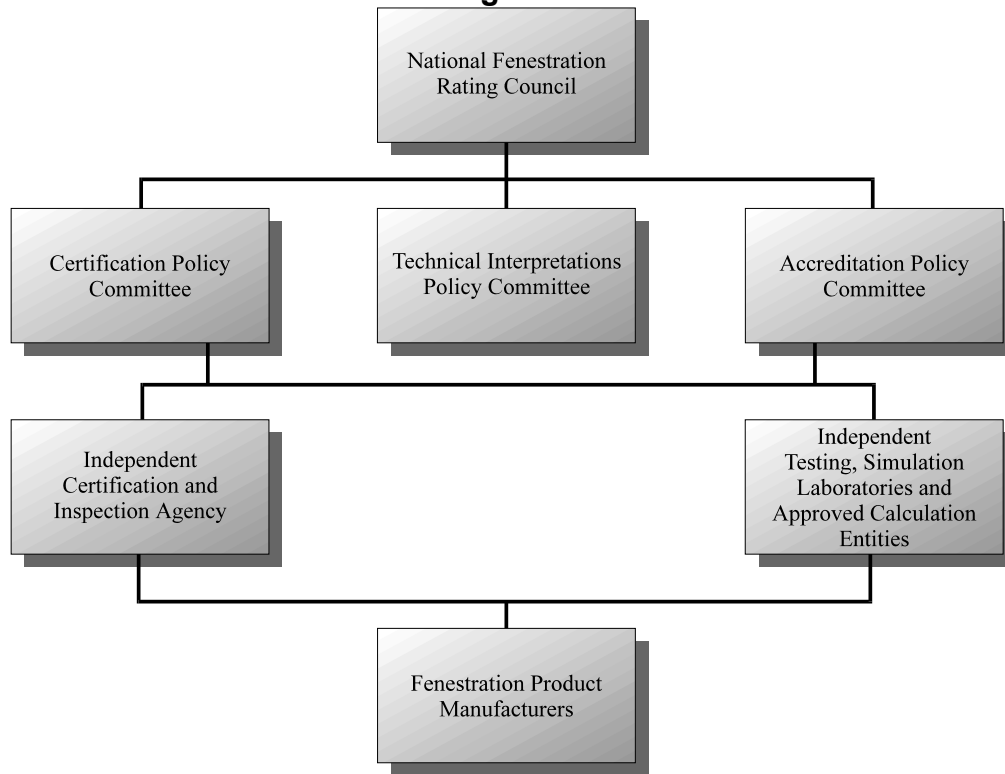


Figure 2

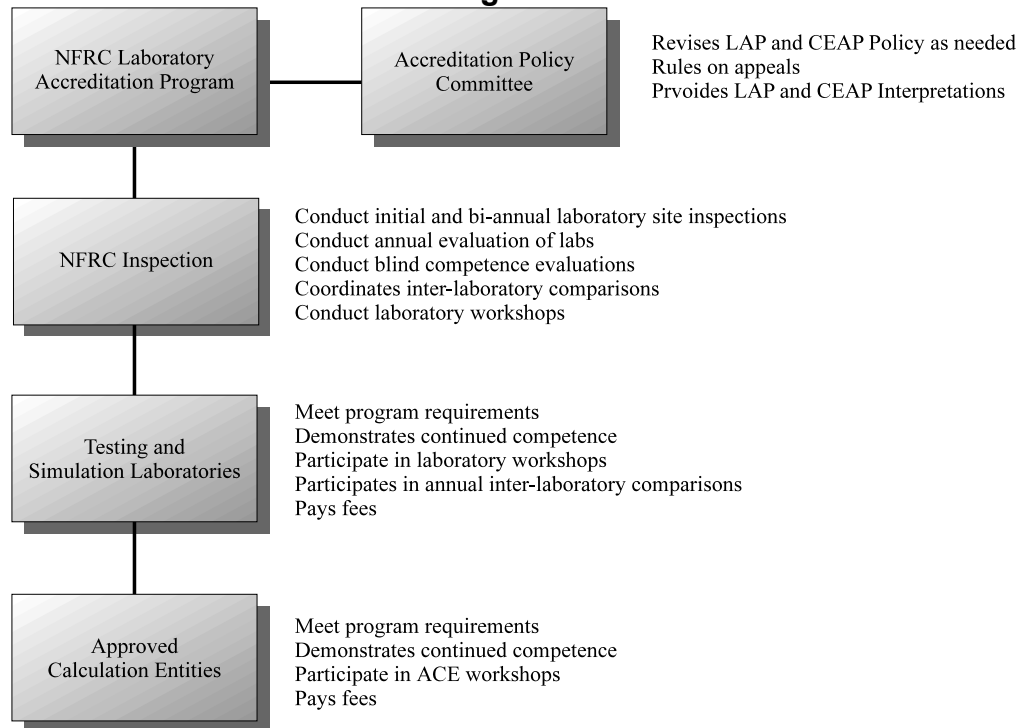
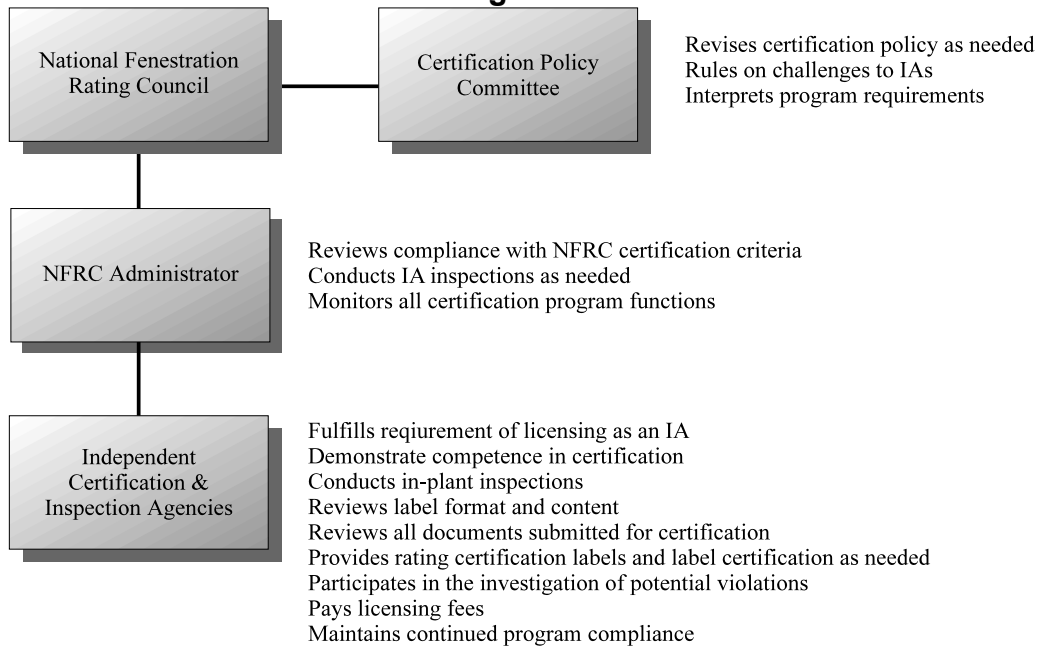


Figure 3



Questions on the use of this procedure should be addressed to:

National Fenestration Rating Council
6305 Ivy Lane, Suite 410
Greenbelt, MD 20770
Voice: (301) 589-1776
Fax: (301) 589-3884
Email: info@nfrc.org
Website: www.nfrc.org



DISCLAIMER

NFRC certification is the authorized act of a Manufacturer/Responsible Party in: (a) labeling a fenestration or related attachment product with an NFRC Permanent Label and NFRC Temporary Label, or (b) generating a site built or CMA label certificate, either of which bears one or more energy performance ratings reported by NFRC-accredited simulation and testing laboratories and authorized for certification by an NFRC-licensed IA. Each of these participants acts independently to report, authorize certification, and certify the energy-related ratings of fenestration and related attachment products.

NFRC does not certify a product and certification does not constitute a warranty of NFRC regarding any characteristic of a fenestration or fenestration-related attachment product. Certification is not an endorsement of or recommendation for any product or product line or any attribute of a product or product line. NFRC is not a merchant in the business of selling fenestration products or fenestration-related products, and therefore cannot warrant products as to their merchantability or fitness for a particular use.

NFRC THEREFORE DISCLAIMS ANY AND ALL LIABILITY THAT MAY ARISE FROM OR IN CONNECTION WITH SERVICES PROVIDED BY, DECISIONS MADE BY OR REPORTS OR CERTIFICATIONS ISSUED OR GRANTED BY ANY NFRC-ACCREDITED LABORATORY, NFRC-LICENSED IA OR ANY PRODUCT MANUFACTURER/ RESPONSIBLE PARTY; RELIANCE ON ANY NFRC PRODUCT DESCRIPTION, SPECIFICATION, RATING, TEST OR CERTIFICATION, WHETHER APPEARING IN A REPORT, A PRODUCT CERTIFICATION AUTHORIZATION OR A PRINTED OR ELECTRONIC DIRECTORY, OR ON A LABEL, OR ON A LABEL CERTIFICATE; OR THE SALE OR USE OF ANY NFRC-RATED OR CERTIFIED PRODUCT OR PRODUCT LINE; INCLUDING BUT NOT LIMITED TO DAMAGES FOR PERSONAL OR OTHER INJURY, LOST PROFITS, LOST SAVINGS OR OTHER CONSEQUENTIAL OR INCIDENTAL DAMAGES.

NFRC program participants are required to indemnify NFRC from and against such liability.



Table of Contents

Foreword	i
Disclaimer.....	v
Table of Contents.....	vi
1. Products, Frame, and Spacer Manufacturers	2
2. Glass & Material Manufacturers.....	5
3. NFRC Membership Fees	6

1. PRODUCTS, FRAME, AND SPACER MANUFACTURERS

NFRC 700 Product Certification Program (PCP), Site-Built and Applied Film Manufacturers Program Fees

Fenestration Product, Site Built, and Applied Film Manufacturers	Member	Non-member	Frequency
Small Business ≤ \$2 million	\$1,650	\$1,725	Annual
Medium Business \$2.01 million - 20 million	\$3,870	\$4,855	Annual
Large Business > \$20.01 million	\$8,275	\$9,375	Annual
PCP Maintenance – Per Product Line	\$111	\$160	Semiannual

NFRC FenStar Certification Program Fees

Description	Member	Non-member	Frequency
Small Business ≤ \$2 million	\$525	\$620	Annual
Medium Business \$2.01 million - 20 million	\$1,600	\$2,550	Annual
Large Business > \$20.01 million	\$3,155	\$4,200	Annual
FenStar Maintenance – Per Product Line	\$60	\$75	Semiannual

Participation fees do not include product or testing costs. These costs are the responsibility of the ENERGY STAR® Partner.

NFRC 702 Certification Agency Program (CAP) Fees

Description	Fee	Frequency
Inspection Agency Licensing	\$11,000	Annual

Licensing includes attendance to mandatory Inspection Agency training.

CAP Operations and In-Plant Inspections are NOT covered in annual program fees.

Annual Operations and In-Plant Assessment	\$1,275	per day + travel costs
---	---------	------------------------

Other Fees

Application Fee	\$725	Initial
Initial CAP Operations and In-Plant Assessment	\$1,275	per day + travel costs

NFRC EWC Window Selection Tool (EWC-WST) Fees

Description	Member	Non-member	Frequency
Small Business ≤ \$2 million	\$600	\$750	Annual
Medium Business \$2.01 million - 20 million	\$1,200	\$1,500	Annual
Large Business > \$20.01 million	\$2,000	\$2,500	Annual

NFRC 701 Laboratory Accreditation Program (LAP) Fees

Description	Member	Non-member	Frequency
-------------	--------	------------	-----------

Testing Laboratory

Testing Laboratory Accreditation Base Fee	\$7,525	\$9,400	Annual
Each Additional Testing Lab Location	\$3,675	\$4,595	Annual
Each Test Method per Location (102,201,202,203,400)	\$675	\$845	Annual

Simulation Laboratory

Simulation Laboratory Accreditation Base Fee	\$4,200	\$5,250	Annual
Each Additional Simulation Lab Location	\$2,320	\$2,900	Annual

Air Leakage Recognition

Air Leakage Laboratory Recognition(for non-NFRC accredited labs)	\$550	\$690	Annual
--	-------	-------	--------

Certified Simulators

Certified Simulator Training Workshop	\$2,375	\$2,975	Annual
Certified Simulator Training - Recertification	\$1,065	\$1,330	per instance
LEAFF Training - Lab	\$420	\$525	
LEAFF Training - Non Lab	\$630	\$790	
Certified Simulator Continuing Education	\$160	\$200	Annual

Continuing education fee is waived for first two Certified Simulators of an accredited laboratory.

Other Fees

Application Fee	\$725	Initial
Initial Testing or Simulation Lab Inspection	\$1,275	per day + travel costs

NFRC 705 Component Modeling Approach Product Certification Program (CMA PCP) Fees

Description	Member	Non-member	Frequency
-------------	--------	------------	-----------

CMA Frame Component Manufacturers

Small Business ≤ \$2 million	\$1,575	\$1,650	Annual
Medium Business \$2.01 million - 20 million	\$3,675	\$4,600	Annual
Large Business > \$20.01 million	\$7,875	\$8,950	Annual
CMA Maintenance – Per Frame Component	\$16	\$25	Semiannual

Spacer Component Manufacturers

Small Business ≤ \$2 million	\$1,575	\$1,650	Annual
Medium Business \$2.01 million - 20 million	\$3,675	\$4,600	Annual
Large Business > \$20.01 million	\$7,875	\$8,950	Annual
CMA Maintenance – Per Spacer Component	\$82	\$125	Semiannual

CMA Software Tool (CMAST), per user	\$1,175	\$1,470	Annual
-------------------------------------	---------	---------	--------

Licensed ACE organizations are exempt from CMA Software Tool fees

NFRC 708 Calculation Entity Approval Program (CEAP or ACE Program) Fees
Manufacturer and Independent ACE Organization

Description	Member	Non-member	Frequency
Participation Fee	\$3,840	\$5,400	Annual
NFRC Accredited Lab	\$1,235	\$1,950	Annual
Annual Maintenance	\$160	\$200	Annual

Licensed ACE organizations are exempt from CMA Software Tool fees.

Other Fees

Application Fee	\$725	\$900	Initial
ACE Training	\$475	\$600	Annual
CEAP Workshop	\$160	\$200	Annual

2. GLASS & MATERIAL MANUFACTURERS

NFRC 302 International Glazing Database (IGDB) and Complex Glazing Database (CGDB) Fees			
Description	Member	Non-member	Frequency
Glazing Supplier Participation (With NFRC Approved Listings)	\$3,865	\$4,910	Annual
Glazing Supplier Participation (With only Non-Approved Listings)	\$550	\$550	Annual
Glazing Maintenance – Per Product Listing (NFRC Approved)	\$90	\$140	Semiannual
Glazing Maintenance – Per Product Listing (Non-Approved)	\$55	\$55	Semiannual

NFRC 101 Thermophysical Property Fees			
Description	Member	Non-member	Frequency
Annual Participation	\$1,265	\$2,000	Annual
Initial/Updated/Reaffirmed Material Listing	\$500	\$625	Per Instance

NFRC 706 Insulating Glass Certification Program Fees			
Description	Member	Non-member	Frequency
Insulating Glass Certification Program	\$1,050	\$1,545	Annual

Other Fees

Description	Member	Non-member	Frequency
Exemption/Extension Request	\$1,050	\$1,545	Per Instance

3. NFRC MEMBERSHIP FEES

NFRC Membership		
Description	Fee	Frequency
Fenestration Industry	\$2,245	Annual
<i>Manufacturers and Suppliers</i>		
<i>Fenestration Organizations/Consultants</i>		
<i>Licensed Independent Inspections and Accreditation Agencies</i>		
Laboratories	\$2,245	Annual
General Contractors/Installers	\$2,245	Annual
General Interest	\$560	Annual
<i>Utility or Energy Service Providers</i>		
<i>Architects, Specifiers, or Design Professionals</i>		
<i>Government Agencies</i>		
<i>Building Officials</i>		
<i>Higher Education Institutions</i>		
<i>Researchers</i>		
<i>Public Interest/Consumer Associations</i>		