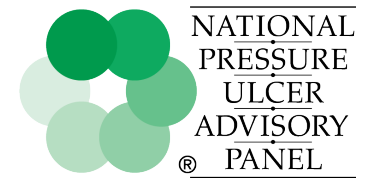


2019 GUIDELINE LAUNCH AGENDA



Conference Objectives

This conference serves as the international launch of the 2019 International Guideline on Pressure Ulcer/Injury Prevention and Treatment. This evidence-based guideline was developed under the leadership of the National Pressure Ulcer Advisory Panel (NPUAP), European Pressure Ulcer Advisory Panel (EPUAP) and Pan Pacific Pressure Injury Alliance (PPPIA) with the support of 14 international wound care organizations, 250 international experts working in small working groups and over 1000 international stakeholders. The objectives of this conference are to:

1. Identify facilitators and barriers to implementation of treatment guidelines
2. Identify resources needed for treatment guideline implementation
3. Discuss potential implementation, policies, and educational strategies
4. Identify quality monitoring designed to support optimal patient outcomes

Target Audience & Participants

International Guideline Partners (Associate Organizations, Guideline Governance Group members, Small Working Group members), Administrators, public policy makers, researchers, educators and clinicians.

Location

USC Hotel on USC Campus, Los Angeles, California

FRIDAY, NOVEMBER 15, 2019

TIME	TOPIC	SPEAKER(S)	TOPICS/OBJECTIVES
1130 – 1300	Registration, Light Lunch and Exhibits Open		
1300 – 1320	Introduction and Welcome on behalf of NPUAP	Janet Cuddigan, PhD, RN, CWCN, FAAN <i>President NPUAP Co-Chair, International Guideline Governance Group</i>	<ol style="list-style-type: none"> 1. Describe the history of the international pressure injury guideline collaborative. 2. Appreciate the broad international expertise supporting development of the Guideline
1320 – 1330	Welcome on behalf of the Schaeffer Center	William Padula, PhD USC <i>Schaeffer Center for Health Policy and Economics</i>	<ol style="list-style-type: none"> 1. Welcome attendees. 2. Identify the importance of rigorously developed evidence-based guidelines in reducing variability in practice and improving patient outcomes. 3. Identify the Importance of evidence in developing public policy.
1330 – 1415	Keynote Address	Brigadier General John J. Bartrum <i>Assistant Surgeon General, Director Air Force Medical Services</i>	<ol style="list-style-type: none"> 1. Discuss the scope and impact of pressure injuries in the military. 2. Describe solutions developed and implemented by American military medical units.

FRIDAY, NOVEMBER 15, 2019

1415 – 1500	The Patient's Perspective	<p>Emily Haesler, PhD <i>Guideline Methodologist Consumer Voices Moderator: Joyce Pittman, PhD</i></p> <p>Bernadette Mauro <i>Director, Information and Resource Services, Christopher & Dana Reeve Foundation</i></p>	<ol style="list-style-type: none"> 1. Describe results of the international consumer survey on the needs of individuals with or at risk of pressure injuries. 2. Appreciate the impact of pressure injuries for individuals.
1500	Break & Exhibits		
1530 – 1615	Why is this Guideline Important? Overview of Methodology and Key Changes	<p>Jan Kottner, PhD <i>EPUAP Co-Chair</i></p> <p>Keryln Carville, PhD <i>PPPIA Co-Chair</i></p> <p>Janet Cuddigan, PhD <i>NPUAP Co-Chair</i></p>	<ol style="list-style-type: none"> 1. Describe the rigorous methodology used to develop the Guideline. 2. Identify key changes in evidence and recommendations.
1615 – 1700	Potential Economic & Policy Implications of the 2019 Guideline	William Padula, PhD	<ol style="list-style-type: none"> 1. Describe how these new evidence-based recommendations inform economic models for pressure injury reimbursement. 2. Discuss potential policy implications of the 2019 International Guideline for the U.S. and the world.
1730 – 1900	Reception and Champagne Toast at the University Club Sponsored by Molnlycke		

SATURDAY, NOVEMBER 16, 2019

TIME	TOPIC	SPEAKER(S)	TOPICS/OBJECTIVES
0700 – 0800	Breakfast & Exhibits 2019 Clinical Practice Guideline Available to All Attendees		
0800 – 0810	Welcome	<p>Mary Litchford, PhD, RDN, LDN <i>Past President, NPUAP NPUAP GGG Rep</i></p>	
0810 – 0830	Understanding Pressure Injury Etiology: Beyond Ischemia.	<p>David Brienza, PhD <i>NPUAP Board Member; Co-Chair, Research Committee & S3I</i></p>	<ol style="list-style-type: none"> 1. Discuss the basic science evidence supporting current theories of pressure-shear injury: ischemia, tissue deformation and reperfusion injury. 2. Describe implications for potential preventive interventions and future research.

SATURDAY, NOVEMBER 16, 2019

0830 – 0845	<p>Understanding Pressure Injury Classification: Let's Get on the Same Page.</p>	<p>Joyce Black, PhD, RN, CWCN, FAAN <i>NPUAP Board Member; Past President, NPUAP; Co-Chair, Staging Task Force</i></p>	<ol style="list-style-type: none"> 1. Describe the various stages of pressure injuries in relation to etiological mechanisms. 2. Identify strategies for accurate staging. 3. Identify strengths and limitations of the current staging system.
0845 – 0915	<p>Implementation Science Considerations for the 2019 Guideline <i>It worked in an RCT. How do I make it work in the real world?</i></p>	<p>Teryl Nuckols, MD, MSHS <i>Director, Division of General Internal Medicine at Cedars-Sinai</i></p>	<ol style="list-style-type: none"> 1. Discuss strategies for guideline implementation based on current implementation science. 2. Apply implementation science theory and science to implementation of the 2019 International Pressure Injury Prevention and Treatment Guideline in acute and post-acute care settings.
0915 – 0945	Break & Exhibits		
0945 – 1015	<p>The Administrator's Perspective</p>	<p>William Padula, PhD (moderator)</p> <p>David Marshall, JD, DNP, RN, CENP, NEA-BC, NHDP-BC, FAAN <i>Senior Vice President and Chief Nursing Executive, Cedar Sinai</i></p> <p>Daniel Galchi, MD <i>Medical Director, Regal Medical Group</i></p> <p>Michael Galchi, JD, MPH <i>Chief Legal Counsel, Regal Medical Group</i></p>	<ol style="list-style-type: none"> 1. Discuss guideline implementation considerations from the perspective of C-suite administrators. 2. Discuss guideline implementation from the perspective of a large network of care including risk management concerns.
1015 – 1030	<p>2019 Prevention Guideline: What is new & different?</p>	<p>Janet Cuddigan, PhD, RN, CWCN, FAAN Mary Litchford, PhD, RDN, LDN</p>	<ol style="list-style-type: none"> 1. Discuss key prevention recommendations with a special focus on nutrition. 2. Identify new evidence-based recommendations for the prevention of pressure injuries.

SATURDAY, NOVEMBER 16, 2019

Break out Groups

1030 – 1130	Implementing New Prevention Guidelines into Acute and Post-acute care settings from an Administrative Perspective.	<p><u>ACUTE CARE LEADERS:</u> Joyce Black, PhD, RN, CWCN, FAAN Joyce Pittman, PhD, ANP-BC, FNP-BC, CWOCN, FAAN <i>Vice President, NPUAP,</i> <i>Co-Chair Education Committee,</i> <i>NPUAP GGG Rep</i></p> <p><u>POST-ACUTE CARE LEADERS:</u> Elizabeth A. Ayello, PhD, RN, CWON, ETN, MAPWCA, FAAN <i>Past President, NPUAP;</i> <i>SWG Member</i></p> <p>Dan R. Berlowitz, MD, MPH <i>Past President, NPUAP</i> <i>NPUAP GGG rep</i></p>	<p>How can we make prevention work in our setting?</p> <ol style="list-style-type: none"> 1. Identify facilitators and barriers to implementation of prevention guidelines. 2. Identify resources needed for prevention guideline implementation. 3. Describe institutional policies that should be updated. 4. Describe educational needs of staff. 5. Discuss potential implementation strategies. 6. Identify quality monitoring and policies designed to support optimal patient outcomes.
1145 – 1215	Acute and Post-Acute Group Reports on Prevention	Group Leaders or Designees	<ol style="list-style-type: none"> 1. Report facilitators, barriers, resources, educational needs, implementation strategies, quality monitoring and policy in both acute and post-acute care settings. 2. Compare and contrast similarities and differences between settings.
1215 – 1315	Lunch & Exhibits		
1315 – 1330	2019 Treatment Guideline: What is new and different?	Dan Berlowitz, MD, MPH	<ol style="list-style-type: none"> 1. Discuss key treatment recommendations 2. Identify new evidence-based recommendations for the treatment of pressure injuries.

Break out Groups

1330 – 1430	<p>Implementing New Treatment Guidelines into Acute and Post-acute Care Settings from an Administrative Perspective.</p>	<p><u>ACUTE CARE LEADERS:</u> Barbara Delmore, PhD, RN, CWCN, MAPWCA, IIWCC-NYU Jill Cox, PhD RN, APN-c, CWOCN</p> <p><u>POST-ACUTE CARE:</u> Elizabeth A. Ayello, PhD, RN, CWON, ETN, MAPWCA, FAAN Dan R. Berlowitz, MD, MPH</p>	<ol style="list-style-type: none"> 1. Identify facilitators and barriers to implementation of treatment guidelines. 2. Identify resources needed for treatment guideline implementation. 3. Describe institutional policies that should be updated. 4. Describe educational needs of staff. 5. Discuss potential implementation strategies. 6. Identify quality monitoring and policies designed to support optimal patient outcomes.
1445 – 1515	<p>Acute and Post-Acute Group Reports on Treatment</p>	<p>Group Leaders or Designees</p>	<ol style="list-style-type: none"> 1. Report facilitators, barriers, resources, educational needs, implementation strategies, quality monitoring and policy in both acute and post-acute care settings. 2. Compare and contrast similarities and differences between settings.
1515 – 1545	<p>Help NPUAP Refine Its Mission. Summary & Adjourn</p>	<p>William Padula, PhD (moderator)</p> <p><u>CHAIRS OF NPUAP MISSION COMMITTEES:</u></p> <p>Education: Joyce Pittman, PhD, ANP-BC, FNP-BC, CWOCN, FAAN Lee Ruotsi, MD, ABWMS, CWSP, UHM</p> <p>Research: Barbara Delmore, PhD, RN, CWCN, MAPWCA, IIWCC-NYU David Brienza, PhD</p> <p>Public Policy: Jill Cox, PhD, RN, APN-c, CWOCN</p>	<ol style="list-style-type: none"> 1. What can NPUAP do to facilitate implementation and education? 2. What public policy changes are needed to fully implement the guideline? 3. What are critical research priorities?