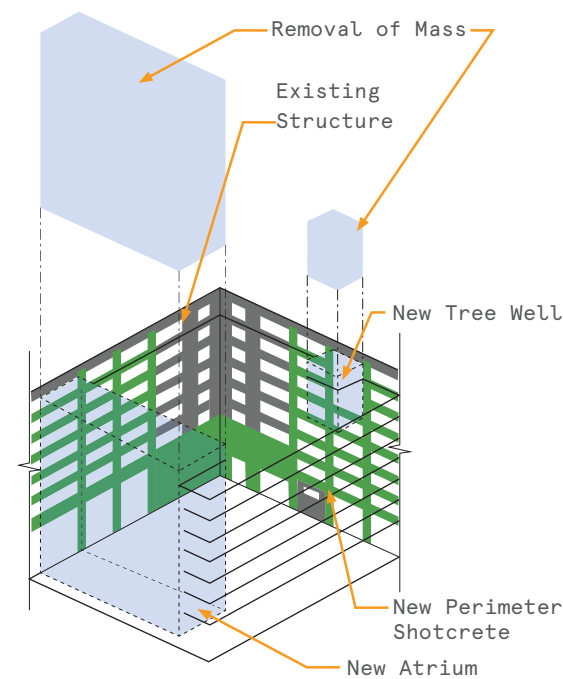
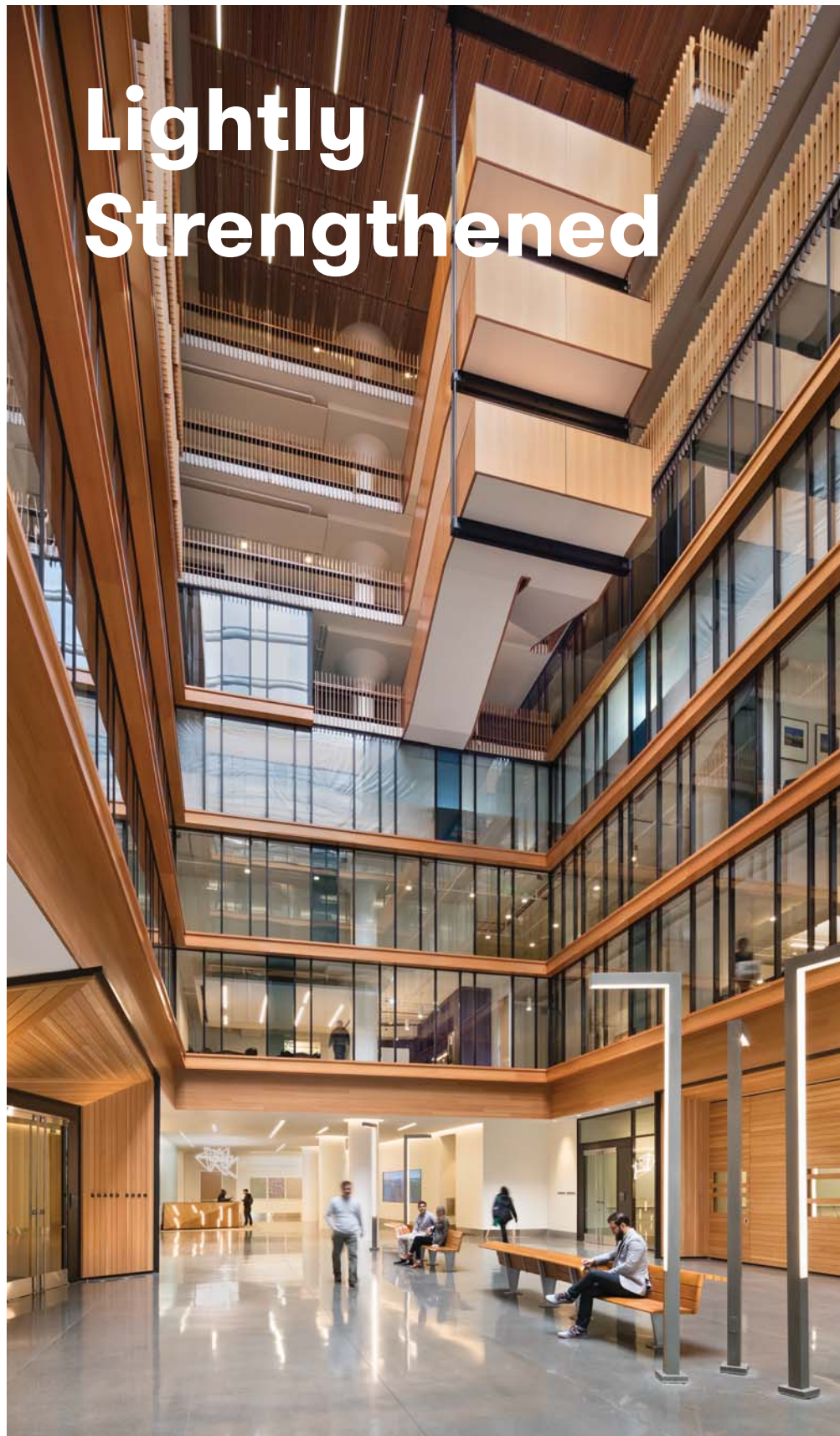
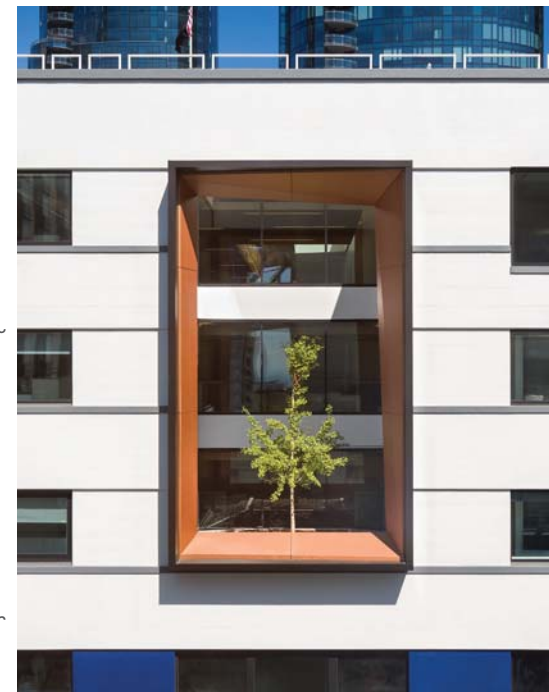


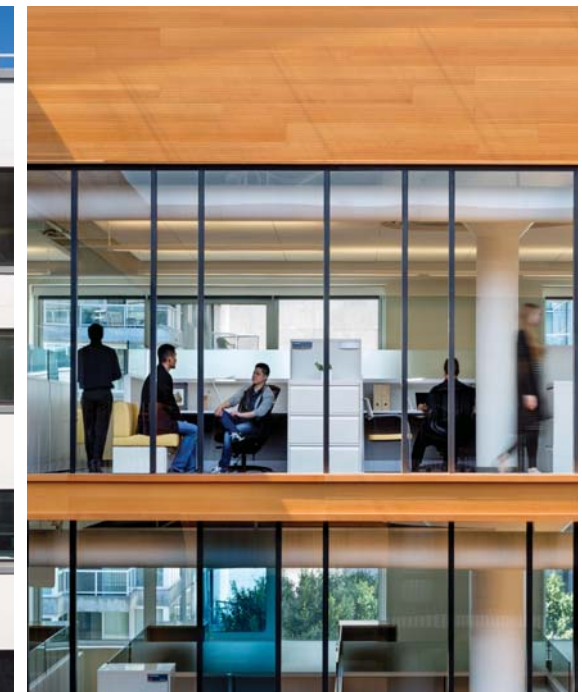
# Lightly Strengthened



Section diagram of structural approach



Mass reduction at perimeter creates exterior courtyard



Inner offices receive atrium daylight



Removal of floorplate and columns



Rebar along exterior shotcrete wall



Mass reduction at corner creates accessible outdoor terrace

## Lighten the Structure

- Performance-based engineering allowed all existing structural capacity to be used in conjunction with the new structural elements added
- Existing heavy and robust reinforced concrete structure able to carry heavy loads with little ductility and insufficient strength
- A mass reduction strategy was employed removing significant portions of the existing building floor plate in strategic locations to reduce the overall seismic demand

## Reinforce Perimeter

- The existing perimeter frame system was augmented with new shotcrete strengthening to add ductility and strength to the existing system
- The new perimeter concrete frame allowed for functional modifications such as the removal of ground floor level columns at the entrance without additional strengthening
- By reducing the overall demand through mass reduction and then augmenting (rather than replacing) the existing lateral system no new foundations were required

## Engaging Workplace

- New structure allowed for a modern compelling office space
- Client benefits from increased rental income
- Daylight penetrates deep within the workplace despite the 60,000+ SF floor plates that take up half a city block