



J. Bradley Adams, Garden 65-D Grond,
graphite&color pencil on paper, 61x33"

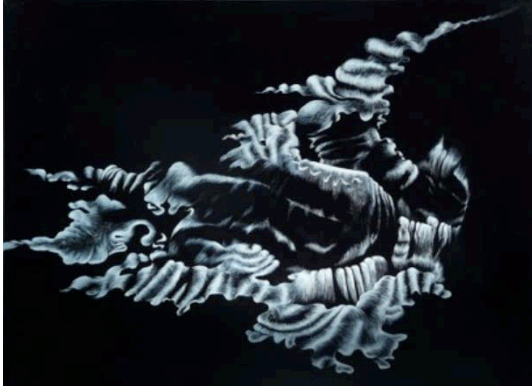


Salwa Aleryani, Current View, 2011,
plaster, MDF, ink and metal, 13"x13"

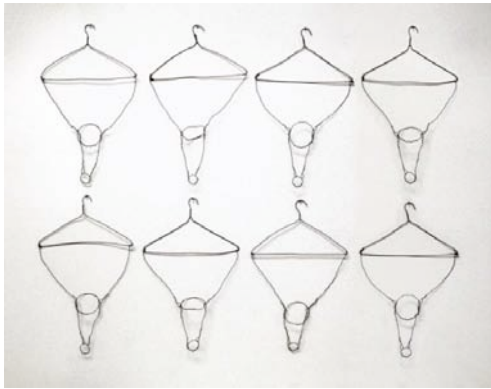


Nikki Arnell, Diverse, wood, spackle,
canvas, 12"x12"x.5"
Between the Lines, wood, paint, marker,
12"x12"x.5"

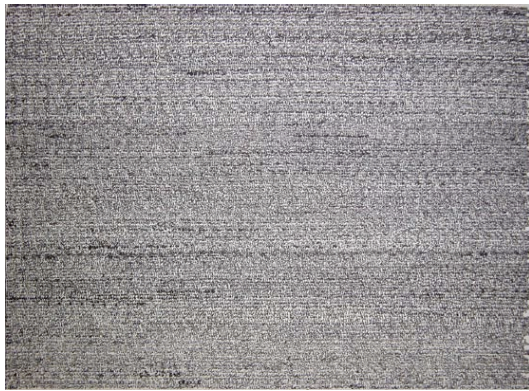




Misty Bennet, Terrestrial Ghost 1, 2010, oil on panel, 22"x30"



Brad Birchett, Formation, 2009, objects and wire, 57"x71"x3"



Marie Bukowski, untitled, pen and ink on paper, 6"x8"



Brent Dedas, Call to Arms, ink and yellow oxide on paper, 20"x30"



Scott Dietrich, Architectural Models #12, From the Taliesin Series, 2004, archival inkjet print, 30"x50"

Architectural Models #27, From the Taliesin Series, 2004, archival inkjet print, 40"x50"



Gregory Eltringham, Bunnyhutch, 2011, acrylic on canvas, 56"x72"



Amy Feger, Systems & Landscape of a Matriarchal Line, oil on plywood, 4'x8'



Jonathan Field, The Slipper Tongue, steel pins and velvet on board, 94"x74"



Jamey Grimes, Pore V, 2011, corrugated plastic, 24"x24"x6"



Kathryn Hagy, Splash Series from Scindhia Ghat on the Ganges River at Varanasi, India, digital print, 16"x20"

Splash Series from Lake Phewa, Pokhara, Nepal, digital print, 16"x20"

Splash Series from Near Anuradhapura on Lake Nuwara, Sri Lanka, digital print, 16"X20"



Shekinah Hein, untitled (There is no Answer To Good and Evil), satin bamboo, merino wool, sisal and jute, 75"x35"



Glenn Hirsch, Swamp Syntax II, 2010, mixed media on paper, 22"x30"



Christopher Jordan, Suburban Sublime #19, archival pigment print, 20"x30"



Amanda Ladymon, Stronger Together than Apart, felt, 10'x3'



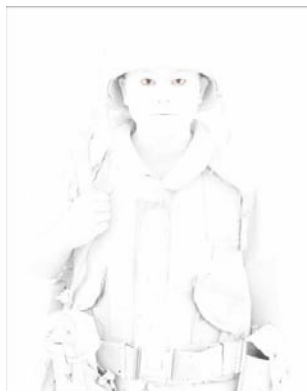
Matthew Kolodziej, Gathering, 2010, acrylic and ink on canvas, 38"x31"



Christopher Lowther, Tease Romance, digital photograph, 24"x16"



Zachary McFarlen, Kinetic Type: Holdin' Out for Somethin' Better, motion graphics and HD video



Joseph Mougel, Blanc 015, archival pigment print, 32"x40"



Blanc 022, archival pigment print, 32"x40"

SECAC

Gutstein Gallery



Nick Pena, Hope & Tragedy (Like a Rock),
oil on canvas, 39.5"x32"



Steven Ramsey, Snail Ride, 3D computer
generated image, 27"x27"x1.5"



Kim Salinas, The Flesh Ribbon, 2010,
acrylic on canvas, 62"x50"



Sherry Saunders, Investigation, digital
photograph, 20"x30"



Marcia Valtsman, Wool in the Dark, 2010, archival pigment print on cotton fiber paper, 24"x16", edition 2/5.