

# SECAC 2019

## JURIED EXHIBITION

JUROR: AMELIA BRIGGS

SEPTEMBER 25 - OCTOBER 19, 2019

**secac**



## JUROR'S STATEMENT

In today's digital culture, we are all familiar with the fatigue that comes with being constantly inundated with visual diaries, branding tactics, and advertisements. With the rise of platforms like Instagram, the pressure to present visually stimulating content is on. This reality was heavy on my mind as I waded through the 650 plus entries; particularly because having little information to go on, my decisions were purely visual. While this initially presented as dubious, it ultimately challenged the work to speak for itself.

Inspired by a diverse range of materials within the

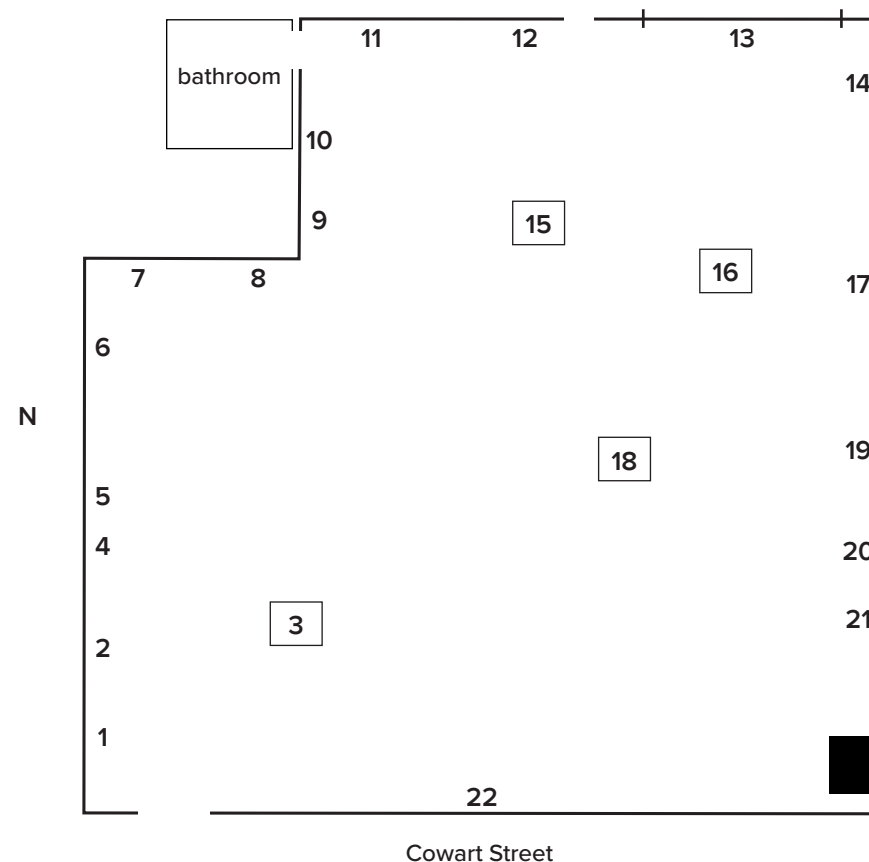
entries, I found myself gravitating towards work that went beyond the familiar and presented a sense of mystery and risk. Many of the works selected express an innovative use of materials while others offer a keen eye for composition and palette. All 22 artists share the common investment in a unique personal language that feels fresh and intentional.

I want to thank Katie Hargrave, Christina Vogel, and SECAC for giving me this opportunity as it was a huge honor to jury this exhibition.

—Amelia Briggs

### WORKS:

- 1 **Mark Bradley-Shoup**, *Diametrically Opposed*
- 2 **Ting Wang**, *Phasing*
- 3 **Tony M. Bingham**, *Now I know what my negro cloth is for version 3*
- 4 **Melissa Dunn**, *Egrets and Elephants #4*
- 5 **Vivian Liddell**, *SLAY*
- 6 **Nell Gottlieb**, *Logan's Creek, 1954*
- 7 **Chung-Fan Chang**, *Guangwu's Land*
- 8 **Astri Snodgrass**, *The Longer the Light Stays (7)*
- 9 **Natalie Harrison**, *Pastel Tapestry 1*



- 10 **Benedict L. Scheuer**, *Flower Surgery*
- 11 **Ann Moody**, *Lickety-Split*
- 12 **Anne Herbert**, *Event Horizon*
- 13 **Karla Stinger-Stein**, *Shape of Sight Series #2*
- 14 **Holt Brasher**, *Destroy/Consume*
- 15 **Danner Washburn**, *Pinch*
- 16 **Elissa Armstrong**, *Architectural Pastoral*
- 17 **Mclean Fahnstock**, *Changeless*
- 18 **Tracy Treadwell**, *At My Request*
- 19 **Lacy Mitcham**, *Soft Skeleton*
- 20 **Mary Laube**, *Queen Min's Hair*
- 21 **Brianna Bass**, *Lapsis*
- 22 **Symphony Medley**, *Makeup War*