

PSA: 7

Clinical stage: T0

Negative TRUS-biopsy sessions: 3

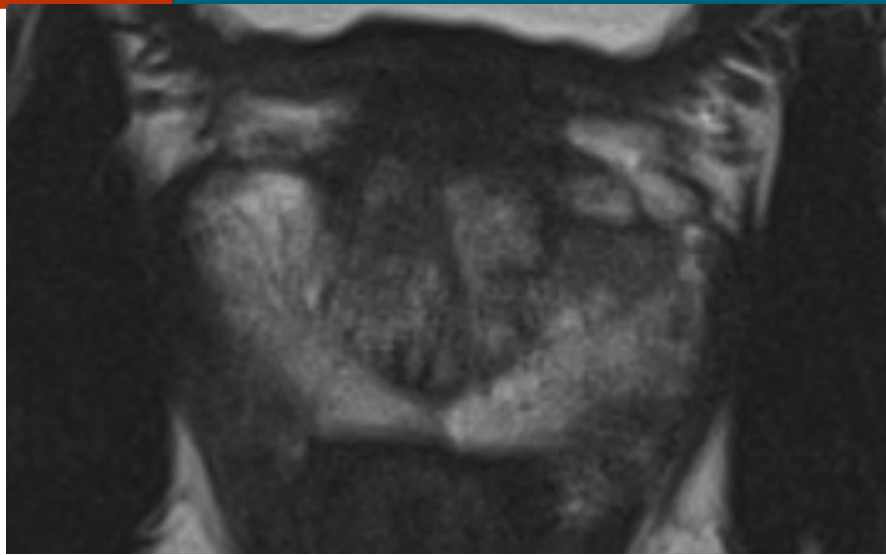
Jurgen Fütterer MD PhD

jurgen.futterer@rad.umcn.nl

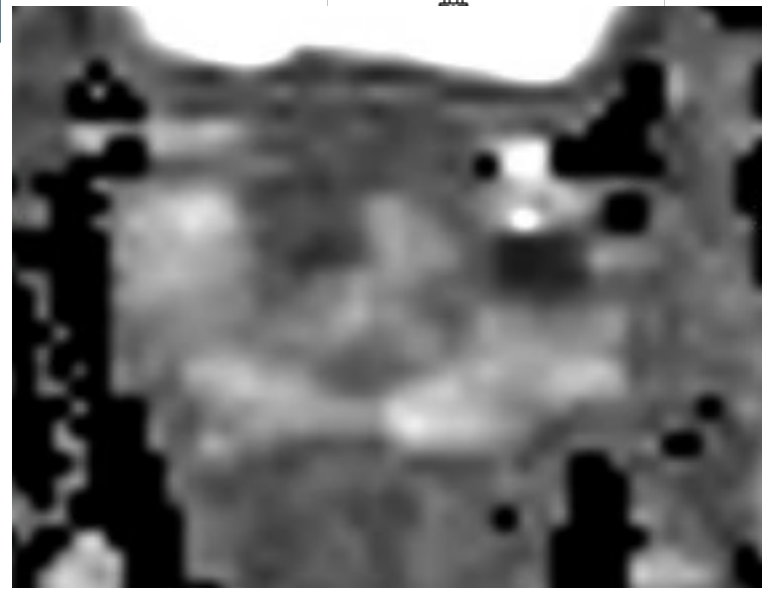
Department of Radiology and Nuclear Medicine

Radboud University Medical Center

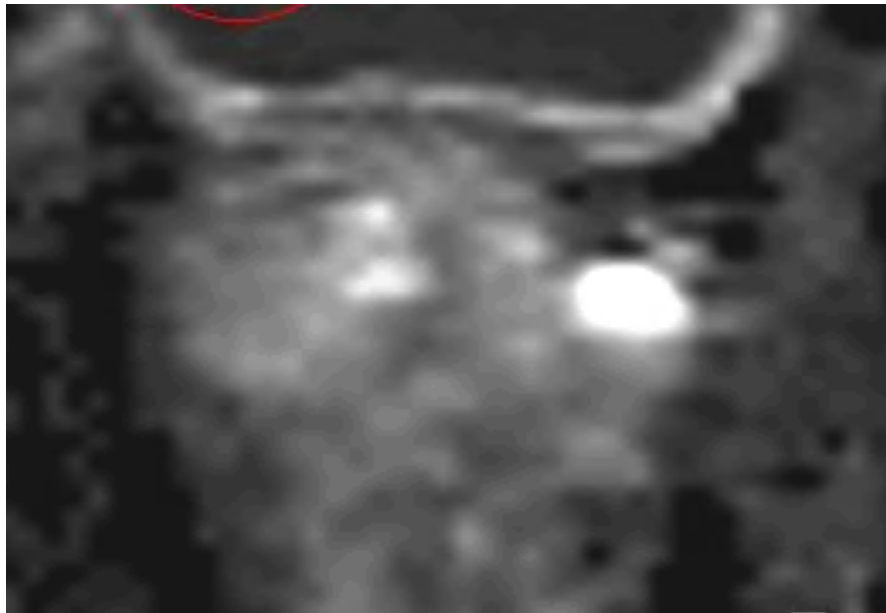
Nijmegen, The Netherlands



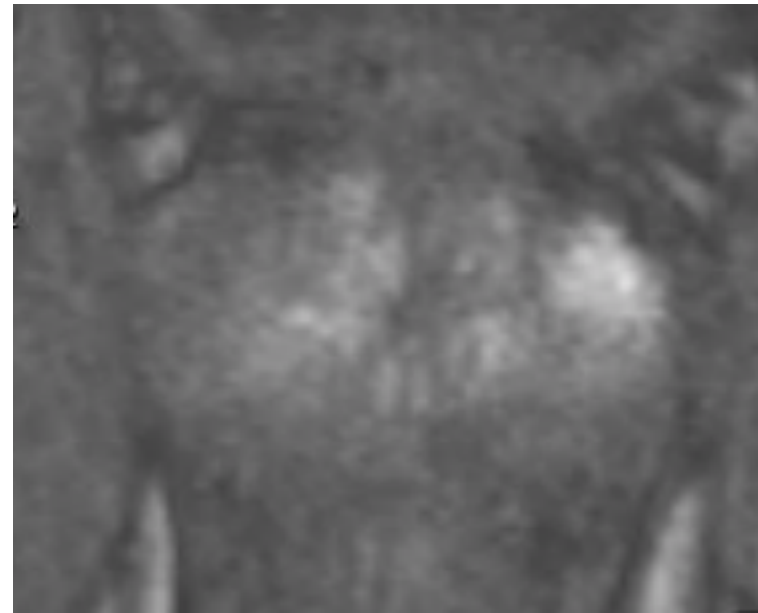
T2-weighted MRI



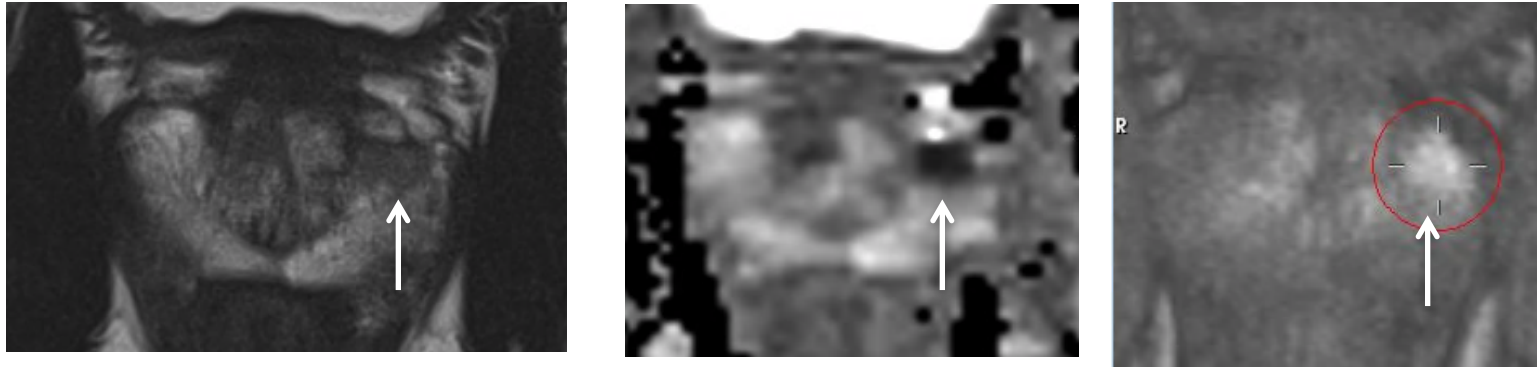
ADC map



High-b value



Post-contrast MRI



Prostate volume: 44 cc; PSAD: 0,23

T2WI: focal low-intermediate signal lesion anterior in the left peripheral zone and <15 mm in greatest dimension

ADC: markedly hypointense on ADC map (648) and high signal on the b-1400.

DCE: focal early enhancement in the anterior lateral horn

Diagnosis:

Prostate cancer in the anterior lateral horn of the left peripheral zone.

Teaching point:

- Focal cancer in anterior horn of the left peripheral zone, may be difficult to detect on T2WI
- DWI and DCE are your friends: they help you to make the correct diagnosis.