

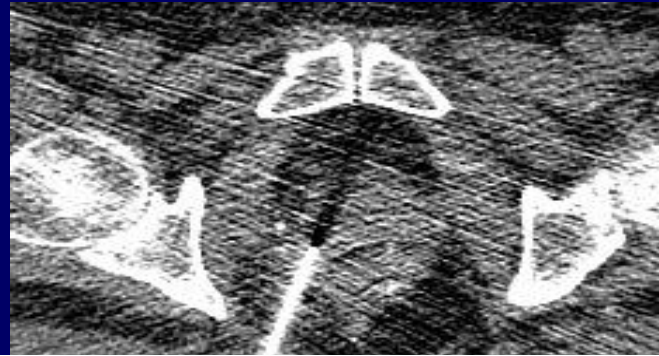
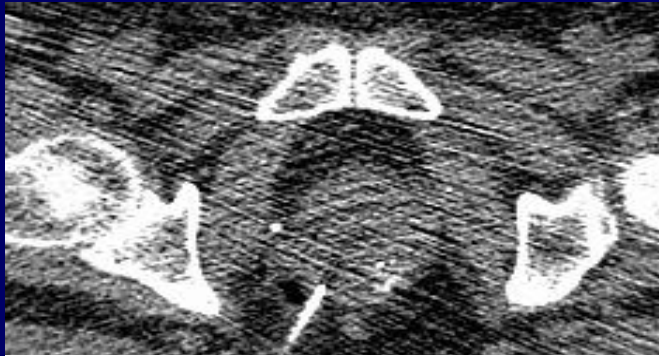
***Prostate biopsy in a patient without a rectum:
Role of CT-guided transgluteal biopsy***

Fergus Coakley MD, Professor and Chair, Diagnostic Radiology,
Oregon Health and Science University, Portland



Challenge and solution

Challenge: 72 year old man with prior abdominoperineal rectal resection for rectal cancer, now with rapidly rising PSA



Solution: CT guided sextant biopsy: 5 of 6 sextants positive, with highest Gleason score of 4+4 cancer



Teaching point

- None of the transrectal biopsy approaches (transrectal ultrasound guided, MRI-targeted fusion biopsy, or direct “in bore” MRI targeted biopsy) are options in patients without a rectum.
- CT guided transgluteal biopsy is a well established alternative in these patients.
- Transperineal biopsy is also an option.

References

1. Kirsch AJ, Coakley FV, Foster BR. A Modified Approach for Transgluteal Prostate Biopsy in Patients Without Rectal Access. *AJR Am J Roentgenol.* 2016 Aug;207(2):W20.
2. Chan RP, Chung DG. Computed tomography-guided transgluteal prostate biopsy using a coaxial needle system: technical note. *Can Assoc Radiol J.* 2003 Jun;54(3):181-2.
3. Goenka AH, Remer EM, Veniero JC, Thupili CR, Klein EA. CT-Guided Transgluteal Biopsy for Systematic Random Sampling of the Prostate in Patients Without Rectal Access. *AJR Am J Roentgenol.* 2015 Sep;205(3):578-83.
4. Papanicolaou N, Eisenberg PJ, Silverman SG, McNicholas MM, Althausen AF. Prostatic biopsy after proctocolectomy: a transgluteal, CT-guided approach. *AJR Am J Roentgenol.* 1996 Jun;166(6):1332-4.