



**Systems Thinking & Data Mining**

Call Together



---

---

---

---

---


---

---

---

**UPDATE!!!**

- Depression Screening and Plan Toolkit Posted for your reference



---

---

---

---

---

---

---

---

**The PERSON, The POWER, The PUNCHING BAG**



---

---

---

---

---

---

---

---

## Macro, Meso, Micro

WHO needs WHAT data?

- ❖ Macro-Administration/Board
- ❖ Meso-Middle Management
- ❖ Micro-Front Line



---

---

---


---

---

---

---


---



MICRO LEVEL

MESO LEVEL

MACRO LEVEL



---

---

---

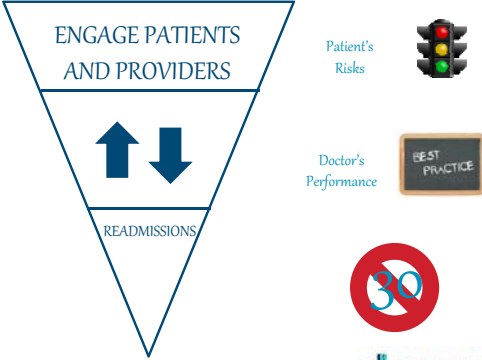
---

---

---

---

---




ENGAGE PATIENTS AND PROVIDERS

↑ ↓

READMISSIONS

Patient's Risks

Doctor's Performance



---

---

---

---

---

---

---

---





---

---

---

---

---

---

---

---



---

---

---

---

---

---

---

---



---

---

---

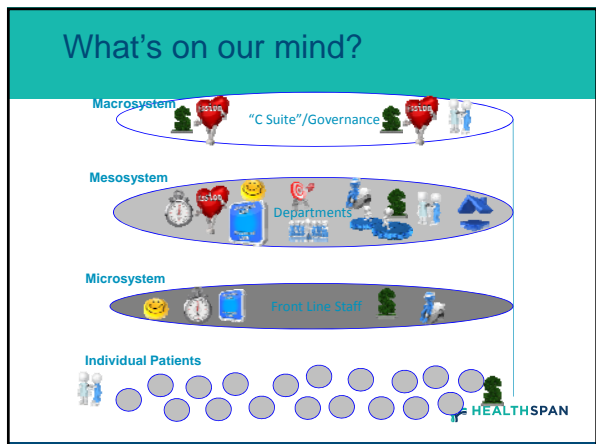
---

---

---

---

---



---

---

---

---

---

---

---

---

### Clarifying the request...

- **GOLDEN RULE:** Always ask WHY?
  - What is the purpose of the request?
    - Outreach?
    - Financial?
    - Quality?
    - Data Validation?
    - High level vs. detail?

A 3D white figure stands to the right of the text. The 'HEALTHSPAN' logo is at the bottom right.

---

---

---

---

---

---

---

---

### Clarifying the request...

- **SILVER RULE:** Always ask for definitions
  - Does HTN mean 401 or include 428?
  - Does Diabetes include gestational diabetes?
  - Does pediatrics mean all kids <18
    - Do you want 18 year olds?
  - Does a "visit" mean any visit?
    - Medical Visit or Dental Visit or both?
    - Qualifying encounter (UDS) or any encounter?

A 3D white figure stands next to a large question mark. The 'HEALTHSPAN' logo is at the bottom right.

---

---

---

---

---

---

---

---

## Clarifying the request...

- **BRONZE RULE:** Ask for time periods
  - Is the reporting period the same as the “event” time period?
  - Ever? Within last X months?
  - Include or don't include end points (age, time)



---

---

---

---

---

---

---

---

## Choosing your “data” ammunition...

- **PLATINUM RULE:** Know your audience!
- **GOLDEN RULE:** Know your purpose
- **SILVER RULE:** Be prepared to validate—know your additional data needs



---

---

---

---

---

---

---

---

## What tool?...When?...Who? Pt. Searches

### When

- List of patients for outreach
- Data Validation
- Huddle/Schedule lists
- Assign/remove tracking type
- Create summaries, recalls, f/u
- View NOT analyze

### Who

- Meso
- Micro



---

---

---

---

---

---

---

---

**What tool?...When?...Who? HRR**

<b>When</b>	<b>Who</b>
<ul style="list-style-type: none"><li>• One population stratified by race/ethnicity/language/age</li><li>• One population profile items- standards of care</li></ul>	<ul style="list-style-type: none"><li>• Meso</li></ul>



---

---

---

---

---


---

---

---

**What tool?...When?...Who? iPHA Reports**

<b>When</b>	<b>Who</b>
<ul style="list-style-type: none"><li>• Measuring outcomes</li><li>• Trending data over time</li><li>• Information on more than 1 population</li><li>• Need to create run charts</li><li>• Stratify by outcome values</li><li>• Continuous data</li></ul>	<ul style="list-style-type: none"><li>• Macro</li><li>• Meso</li><li>• Micro</li><li>• PATIENTS</li></ul>



---

---

---

---

---


---

---

---

**What tool?...When?...Who? Tracking Types/Profiles**

<b>When</b>	<b>Who</b>
<ul style="list-style-type: none"><li>• Ongoing population management</li><li>• Workflows</li><li>• EBG and Protocol focus</li><li>• Pre-visit planning</li><li>• Decision Support</li></ul>	<ul style="list-style-type: none"><li>• Meso</li><li>• Micro</li></ul>



---

---

---

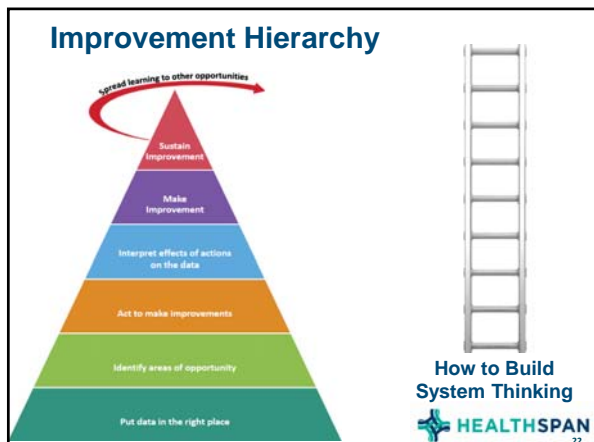
---

---

---

---

---



---

---

---

---

---

---

---

---

### QI Homework

Pick one measure (w/Ops):

- Could be depression if doing
- Could be different measure

Develop PPT answering these questions:

- Where are we now?
- Where do we want to go?
- What are our risks?
- What are our opportunities?

HEALTH

---

---

---

---

---

---

---

---

### Ops Homework

Pick one measure (w/QI):

- Could be depression if doing
- Could be different measure

Develop PPT answering these questions:

- What does this data mean?
- What are our operational risks?
- What are our operational opportunities?
- How will you message to staff?

HEALTH

---

---

---

---

---

---

---

---